

Infusion Tea and Coffee Brewer

Features

Perfect iced or hot tea and hot or iced coffee from a brewer less than 12" wide

- Large tank provides back-to-back brewing capacity and allows 3 or 5 gallon (11.4 to 18.9 litres) tea batches.
- Dual voltage adaptable. Can operate at 120V/15 amp or 208-240V/20 amp.
- Two programmable batch switches allow full and half batch brewing of iced tea.
- Brews into all BUNN iced tea dispensers (except TDS-5) and 1.9 to 3.8 litre airpots.
- BrewWISE® intelligence with pre-infusion and pulse brew for maximum flavor extraction. Digital temperature control and cold brew lockout.
- Easy Pulse interface allows automatic programming of pulse routine.
- Energy-saver mode reduces tank temperature during idle periods.
- Display advertising messages and machine status.
- Brew counter keeps track of how many batches brewed.
- Models available with integrated flip tray that converts to three positions: thermal carafe, airpot and tea dispenser.
- Most models include graphic overlays for customizing user interface.
- English and Spanish alphanumeric display.



Shown with TDO-4

ITCB with integrated flip tray

Model ITCB

(dispensers not included)

Dimensions (Tall): 34.37" H x 11.53" W x 23.78" D
(87.3cm H x 29.3cm W x 60.4cm D)

Dimensions (Short): 31.12" H x 11.53" W x 23.78" D
(79.1cm H x 29.3cm W x 60.4cm D)

ITCB	Tea Dispensers
25.75" trunk	TD4, TDS-3, TDS-3.5, TDO-4
29" trunk	TD4, TD4T, TDS-3, TDS-3.5, TDO-4, TDO-5, TDO-N-3.5

For current specification sheets and other information, go to www.bunn.com.

Related Products

Easy Clear® EQHP-TEA
Product No. : 39000.0007

Easy Clear® EQHP-TEACRTG
Replacement Cartridge
Product No. : 39000.1007

Easy Clear® EQHP-10
Product No.: 39000.0000

Easy Clear® EQHP-10CRTG
Product No.: 39000.1000



TDO-4 Tea Dispenser
(solid lid)
Product No. : 34100.0000

TDO-N-3.5 Tea Dispenser
Product No. : 39600.0001

Airpot Booster-Short (10.6")
Product No. : 35976.0002

Airpot Booster-Tall (13.8")
Product No. : 35976.0003



2.5 liter Lever-Action Airpot
Product No. : 32125.0000

3.0 liter Lever-Action Airpot
Product No. : 32130.0000

3.8 liter Lever-Action Airpot
Product No. : 36725.0000



Model

Agency Listing

ITCB



Patents Apply

02/09

B3

Dimensions & Specifications

CANADA



Model	Product #	Volts	Amps	Tank Htr Watts	Total Watts	Coffee Brewing per hour	Tea Brewing per hour	Cubic ft ³ /m ³	Weight lbs/kg	Cord Attached
-------	-----------	-------	------	----------------	-------------	-------------------------	----------------------	---------------------------------------	---------------	---------------

All ITCB-DV models share the specifications shown below:

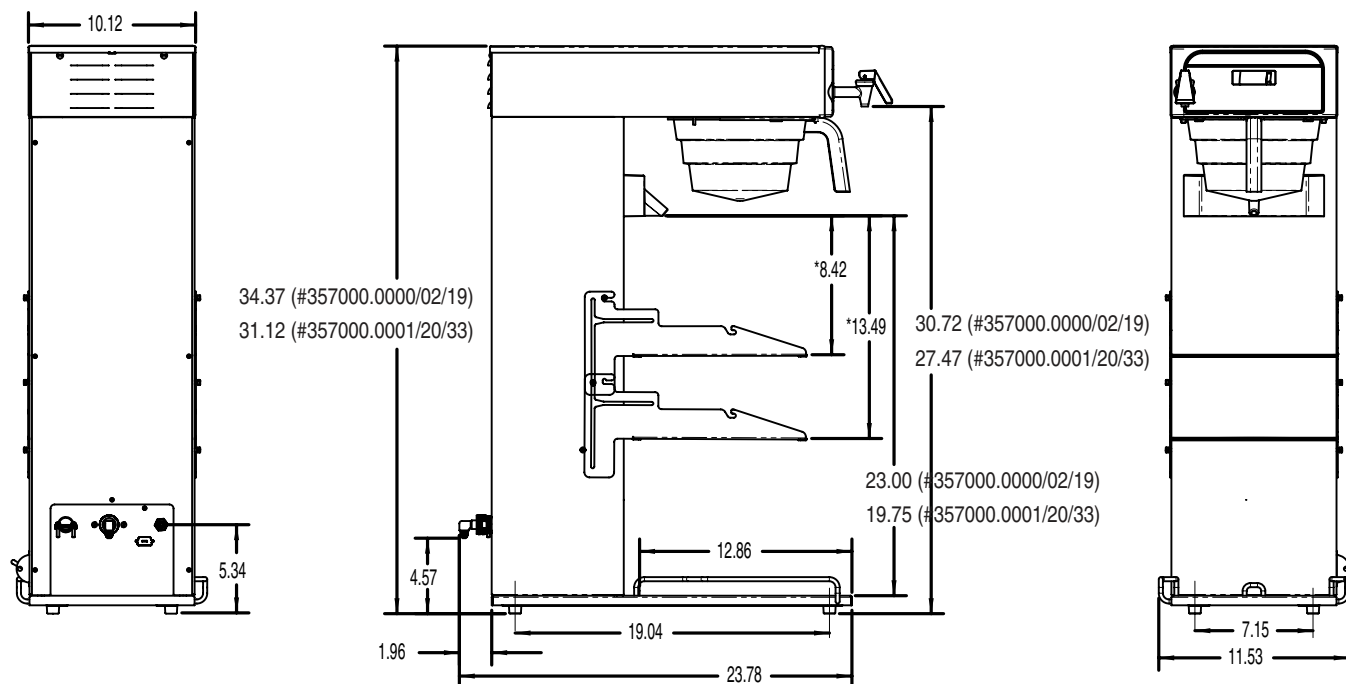
		120	11.9	1425	1425	4.5 gal/17.0 L	26.7 gal/101.1L	10.3/.29	50/27.2	Yes†
		120/208	11.7	2425	2425	7.5 gal/28.4 L	26.7 gal/101.1L	10.3/.29	50/27.2	
		120/240	13.4	3225	3225	7.5 gal/28.4 L	26.7 gal/101.1L	10.3/.29	50/27.2	
ITCB-DV	35700.6000	29" trunk, with overlays								
	35700.6019	29" trunk, with flip tray, with overlays								
	35700.6001	25.75" trunk, with overlays								
	35700.6020	25.75" trunk, with flip tray, with overlays								
	35700.6002	29" trunk, 7 hole sprayhead, with overlays								

†Power cord (NEMA 5-15P) 15 Amp-120V machine only.

Additional models with other funnel and sprayhead configurations are available as make-to order items. Contact your BUNN sales representative.

Electrical: 120 volt, 15 amps models require 2-wires plus ground service rated 120V, single phase, 60 Hz. If wired for 120/208V or 120/240V, required 3 wires plus ground service rated 120/208V or 120/240V, single phase, 60Hz. An internal terminal block is configured for connection to a 3-wire plus ground.

Plumbing: 20-90 psi (138-621 kPa). Model supplied with a 1/4" male flare fitting.



Bunn-O-Matic Corporation of Canada - 280 Industrial Pkwy. S. Aurora, Ontario L4G 3T9 • 905-841-2866 • Fax 905-841-2775 • www.bunn.com

BUNN® practices continuous product research and improvement. We reserve the right to change specifications and product design without notice. Such revisions do not entitle the buyer to corresponding changes, improvements, additions or replacements for previously purchased equipment.

All dimensions shown in inches. Bunn Corporation owns all copyrights relating to materials in this publication. Please contact Bunn Corporation to request permission to reproduce any portion of this publication.