

## 5 Gallon Iced Tea Brewer



### Model TU5Q

(shown with TDO-5 Dispenser)

(dispensers sold separately)

Dimensions: 38.5"H x 11.5"W x 24"D

(97.8cm H x 29.2cm W x 60.96cm D)

### Features

#### Iced Tea Brewer

#### Large-capacity fresh iced tea brewing solution with simple operation

- Brews 28.5 gallons (107.9 litres) per hour from real tea leaves.
- Patented iced tea brewers generate top profits through large volume sales.
- Brews directly into any style portable server.
- Meet your volume needs; brew either 3 or 5 gallons (11.36 to 18.93 litres) of iced tea at a time.
- Can be set up to brew concentrate only for easier transport.
- SplashGard® funnel deflects hot liquids away from the hand.
- Quickbrew (Q) model for shorter brewing cycles.

For current specification sheets and other information, go to [www.bunn.com](http://www.bunn.com).

### Related Products

#### Easy Clear® EQHP-TEA

Product No. : 39000.0007

#### Easy Clear® EQHP-TEACRTG

Replacement Cartridge

Product No. : 39000.1007

#### Single/Dual Filter Pack

Product No. : 20100.0000

Packed per case: 500

Dimensions:

5¼" Base x 3¾" Sidewall

(13.34 cm Base x 9.52 cm Sidewall)



#### TDO-5 – Tea Dispenser

Product No. : 34100.0003

Capacity: 5 gallons (18.9 L)

Weight: 14 lbs. (6.35 kg)

Dimensions:

22.1"H x 10.6"W x 13.6"D

(56.13 cm H x 26.92 cm W x 34.5 cm D)



#### TDS-5 – Tea Dispenser

Product No. : 33000.0001

Capacity: 5 gallons (18.9 L)

Weight: 12 lbs. (5.4 kg)

Dimensions:

25.6"H x 9.8"W x 14.8"D

(65cm H x 37.8cm W x 37.6cm D)



#### TD4T – Tea Dispenser

Product No. : 03250.0004

Capacity: 4 gallons (15.1 L)

Weight: 14 lbs. (6.8 kg)

Dimensions:

21.9" H x 9" W x 13" D

(55.63 cm H x 22.86 cm W x 33.02 cm D)



#### Model

TU5Q

#### Agency Listing



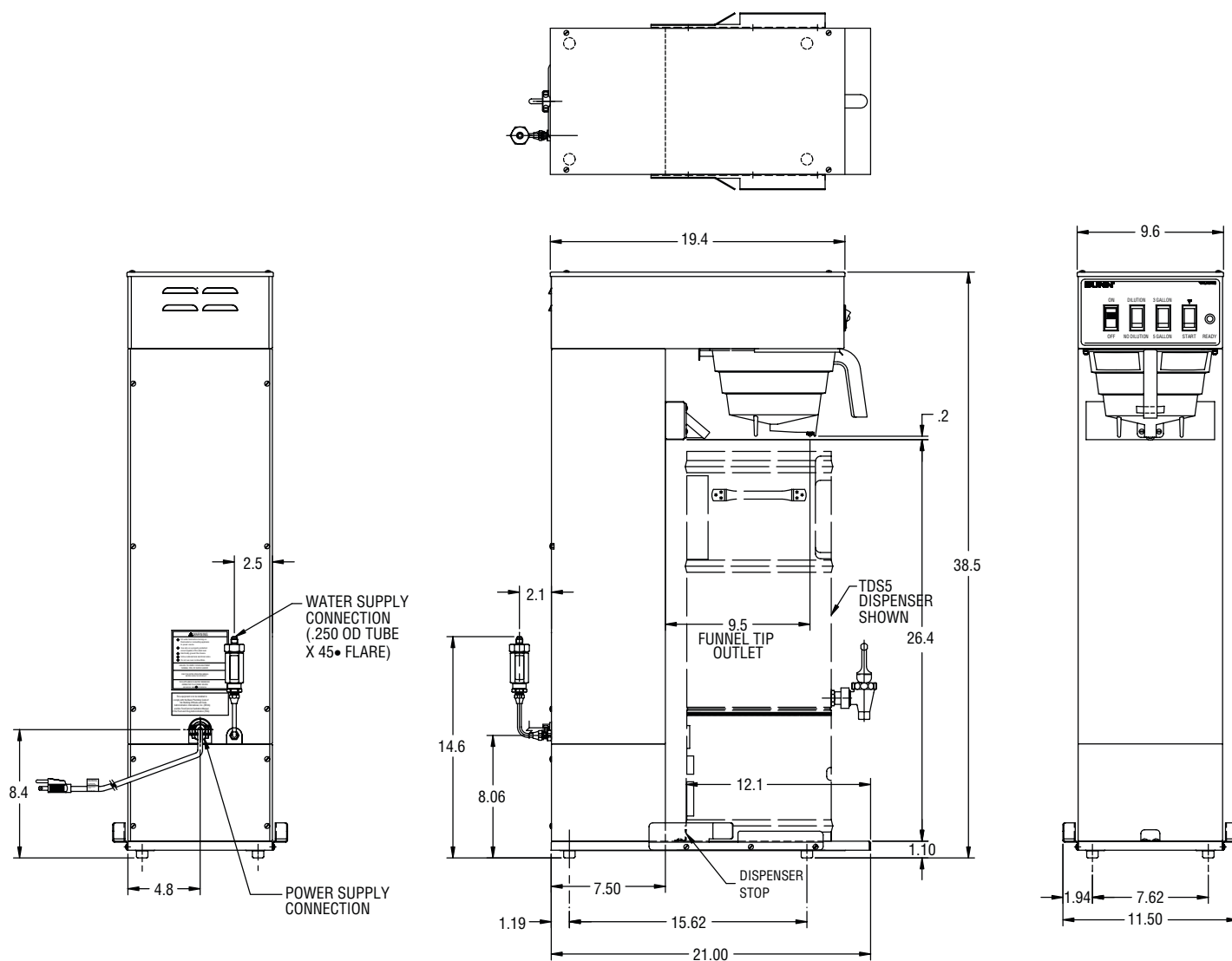
## Dimensions & Specifications

Model	Product #	Volts	Amps	Tank Heater Watts	Total Watts	Brewing Capacity	Cu. Ft.	Shipping Weight	Cord Attached
TU5Q	24400.0000	120	15	1800	1800	28.5 gal./hr.	8.8 ft <sup>3</sup>	51 lbs.	Yes*

\*Power cord (NEMA 5-15P) 15 Amp-120V machine only.

Electrical: Model requires 2-wires plus ground service rated at 120V, single phase, 60 Hz.

Plumbing: 20-90 psi (138-621 kPa). Machine supplied with 1/4" OD male flare fitting. Requires minimum 1.25GPM water flow.



Bunn-O-Matic® Corporation - 1400 Stevenson Drive Springfield, Illinois 62703 • 800-637-8606 • 217-529-6601 • Fax 217-529-6644 • [www.bunn.com](http://www.bunn.com)

BUNN® practices continuous product research and improvement. We reserve the right to change specifications and product design without notice. Such revisions do not entitle the buyer to corresponding changes, improvements, additions or replacements for previously purchased equipment.

All dimensions shown in inches.

9/10 © Bunn-O-Matic Corporation