


Silver Series™ 4-Flavor

Gourmet Cold Beverage System with Fully Lighted Graphics

Features

Gourmet Cold Beverage System

- Fully lighted door graphics bring high visibility to front-of-house applications.
- Superior performance in juice and other concentrated beverage dispensing.
- One dispenser delivers both frozen and ambient products increasing profits by lowering costs.
- Drink consistency assured with the BUNN patented High Intensity® mixing technology.
- Pumps and mixes 2+1 to 11+1 concentrated beverages, including 4+1 high viscosity and 5+1 juices accurately and consistently.
- Quick dispense with 1.0 to 1.5 ounces (29.6 to 44.4 ml) per second flow rate.
- 7" (17.8 cm) cup clearance accommodates most juice containers.
- 18 lb. (8.2 kg) ice bank provides superior cold drink capacity.
- Advanced concentrate pump designed for easy setup, accuracy and durability.
- Service-friendly design including two modular dispense decks makes service fast and simple.
- Both push-button and portion control in the same machine.
- Cold water dispense option available. See models listed on back.
- Door lock standard.
- Preventive maintenance kit: 39690.0000. 



Model JDF-4S

Dimensions: 33.1"H x 15.7"W* x 25.5"D
(84.1cm H x 39.9 cm W* x 64.8cm D)
*width including door handle

For current specification sheets and other information, go to www.bunn.com.

Related Products

Easy Clear® EQHP-10
Product No. : 39000.0004

Easy Clear® EQHP-10CRTG
Product No. : 39000.1004



Ambient Conversion Kit
Product No.: 33699.0001
(one kit required per dispense station - photo shows 4-dispense station unit with one container and three ambient conversion kits)



Refillable Juice Container
Capacity: 1 Gallon
Product No.: 39302.0000



Model

JDF-4S

Agency Listing



Dimensions & Specifications

CANADA



Model	Product #	Volts	Amps	Capacity	Cubic ft ³ /m ³	Weight lbs/kg	Cord Attached
JDF-4S, Lit Door	37300.6004	120	6	3 (12 oz.) drinks/min*	10.3 / .29	129 / 58.5	Yes [†]
JDF-4S, Lit Door (with cold water dispense)	37300.6006	120	6	3 (12 oz.) drinks/min*	10.3 / .29	129 / 58.5	Yes [†]

Models include air filter

Refillable Juice Container Product No.: 39302.0000 Capacity: 1 Gallon

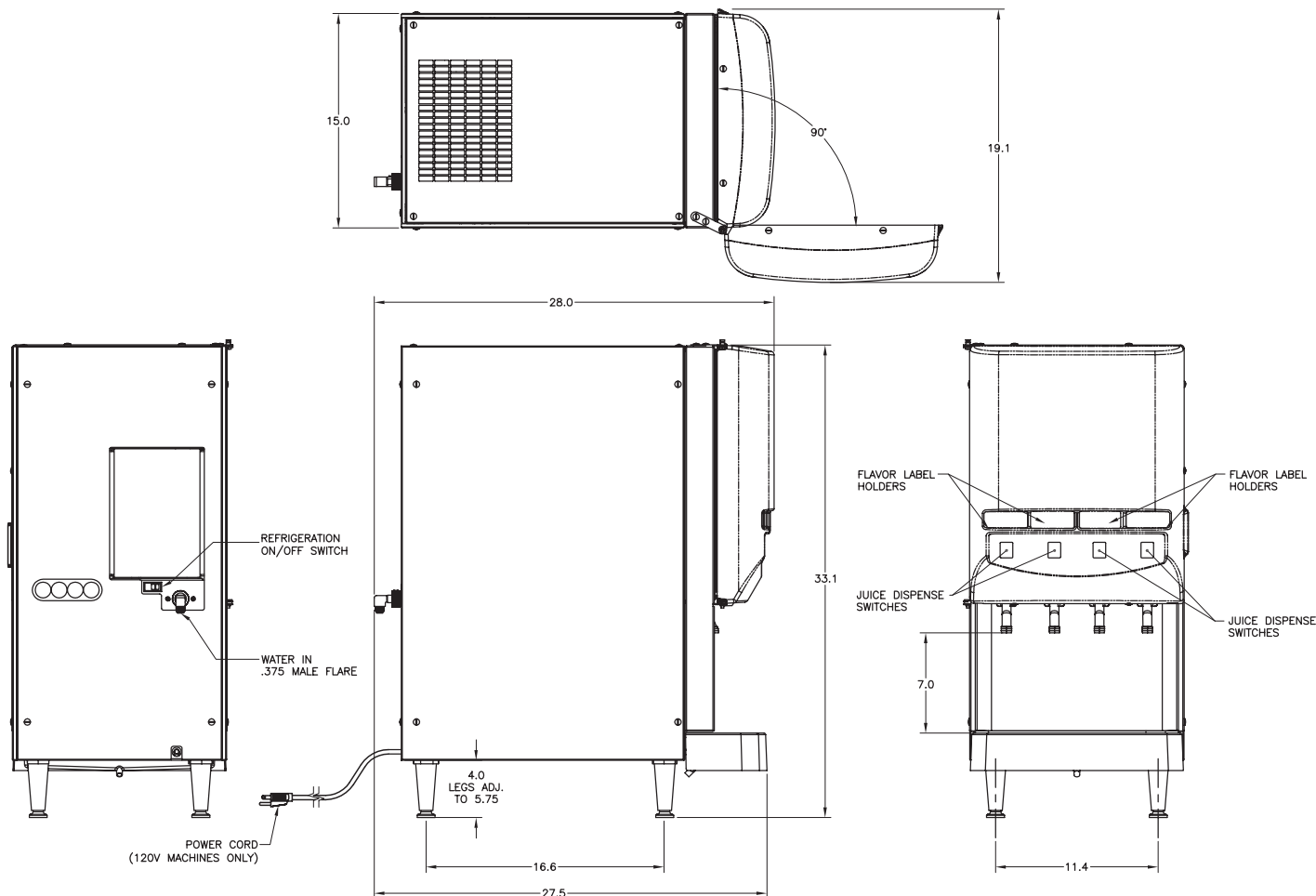
* 75°F (24°C) incoming water for 145 drinks without exceeding 41°F (5°C) finished drink temperature.

[†]Power cord (NEMA 5-15P) 15 Amp-120V machine only.

Electrical: Model requires 2-wire grounded service rated 120V, single phase, 60 Hz.

Plumbing: 20-100 psi (138 - 690 kPa). Machine supplied with $\frac{3}{8}$ " male fitting.

Refrigeration: R-134a refrigerant, 9 oz. (.28 kg), 8 lb. (3.6 kg) ice bank system



Bunn-O-Matic Corporation of Canada - 280 Industrial Pkwy. S. Aurora, Ontario L4G 3T9 • 905-841-2866 • Fax 905-841-2775 • www.bunn.com

BUNN® practices continuous product research and improvement. We reserve the right to change specifications and product design without notice. Such revisions do not entitle the buyer to corresponding changes, improvements, additions or replacements for previously purchased equipment.

All dimensions shown in inches. Bunn Corporation owns all copyrights relating to materials in this publication. Please contact Bunn Corporation to request permission to reproduce any portion of this publication.