

# BUNN<sup>®</sup> *INTERNATIONAL*

## Silver Series<sup>®</sup> 4-Flavour

### Cold Beverage System

### with LED Lighted Graphics and Portion Control Dispense

ITEM#

PROJECT

DATE




#### **Model JDF-4S w/Lighted Graphics**

Dimensions: 33.1"H x 15.7"W x 25.5"D  
(84.1cm H x 39.9 cm W\* x 64.8cm D)  
\*width including door handle  
(Refillable containers sold separately)

## Features

### Cold Beverage System

*Cold beverage dispenser with High Intensity<sup>®</sup> mixing delivers superior drinks consistently glass after glass*

- Three-size portion-control dispense.
- LED lighted door graphics bring high visibility to front-of-house applications.
- One dispenser delivers both frozen and ambient products increasing profits by lowering costs.
- Drink consistency assured with the BUNN High Intensity<sup>®</sup> mixing technology.
- Pumps and mixes 2+1 to 11+1 concentrated beverages, including 4+1 high viscosity and 5+1 juices accurately and consistently.
- Quick dispense with 1.0 to 1.5 ounces (29.6 to 44.4 ml) per second flow rate.
- 7" (17.8 cm) cup clearance accommodates most juice containers.
- 18 lb. (8.2 kg) ice bank provides superior cold drink capacity.
- Advanced concentrate pump designed for easy setup, accuracy and durability.
- Service-friendly design including two modular dispense decks makes service fast and simple.
- Door lock standard.
- Preventive maintenance kit: 39690.0000. 

For current specification sheets and other information, go to [www.bunn.com](http://www.bunn.com).

## Related Products

### Easy Clear<sup>®</sup> EQHP-10

Product No. :39000.0004

### Easy Clear<sup>®</sup> EQHP-10CRTG

Product No. :39000.1004

### Easy Clear<sup>®</sup> EQHP-10L

Product No. :39000.0001

### Easy Clear<sup>®</sup> EQHP-10LCRTG

Product No. :39000.1001

### Extended Drip Tray

Product No. :40789.1000

increases cup clearance to 10.25"



### Ambient Conversion Kit

Product No.: 33699.0001

(one kit required per dispense station - photo shows 4-dispense station unit with one container and three ambient conversion kits)



### Refillable Container

Product No.: 39302.0000

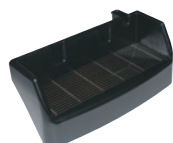


### Portion Control Membrane Switch Kit

Product No. :41298.0000

### Push-Hold Membrane Switch Kit

Product No. :41299.0000



## Dimensions & Specifications

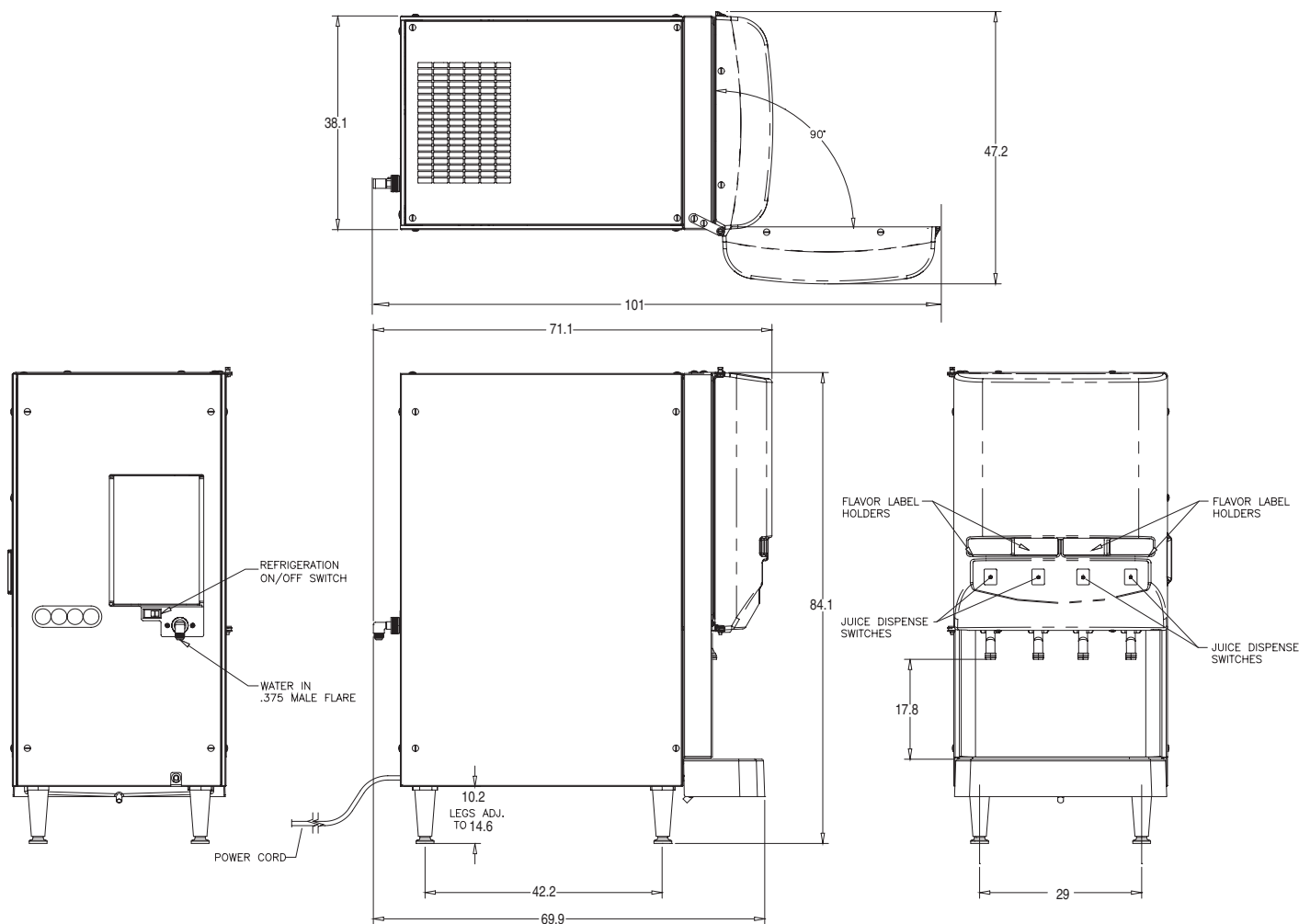
| Model                            | Product #  | Volts | Amps | Capacity                        | Shipping Weight | Cord Attached | Agency |
|----------------------------------|------------|-------|------|---------------------------------|-----------------|---------------|--------|
| JDF-4SA                          | 37300.0024 | 230   | 4    | 3 (12 oz.) drinks/min           | 129 lbs.        | Yes           | CE NSF |
| (portion control, juice display) |            |       |      | 3 (355 mL) drinks/min (58.5 kg) |                 |               |        |

Refillable Juice Container Product No.: 39302.0000 Capacity: 1 Gallon (3.8 L)  
75°F (24°C) incoming water for 180 drinks without exceeding 41°F (5°C) finished drink temperature.

Electrical: Model requires 2-wire grounded service rated 220-240V, single phase, 50/60 Hz.

Plumbing: 20-100 psi (138 - 690 kPa). Machine supplied with  $\frac{3}{8}$ " male fitting.

Refrigeration: R-134a refrigerant, 10 oz. (.28 kg), 10 lb. (4.5 kg) ice bank system



Bunn-O-Matic® Corporation - 1400 Stevenson Drive Springfield, Illinois 62703 • USA • +1-217-529-6601 • Fax +1-217-529-2827 • [www.bunn.com](http://www.bunn.com)

BUNN® practices continuous product research and improvement. We reserve the right to change specifications and product design without notice. Such revisions do not entitle the buyer to corresponding changes, improvements, additions or replacements for previously purchased equipment.

All dimensions shown in centimeters.

7/10 © Bunn-O-Matic Corporation