

# INSTRUCTION MANUAL

## ATTENTION:

- PLEASE** read these instructions carefully before operating this appliance.
- The temperature is thermostatically controlled between the range of 50°C to 300°C (122° F to 572°F). A signal lamp adjacent to the thermostat indicates when the heating elements are energized.

## IMPORTANT:

- These units are designed to operate on alternating current (A.C.) only.
- **DO NOT CONNECT TO DIRECT CURRENT (D.C.).**
- Care should be taken when operating this appliance as **HOT SURFACES** may cause burns.
- Ensure that the power supply cord does not come into contact with hot surfaces.
- Do not leave unit in operation without an attendant.
- When not in use for long period unplug the appliance.

## INSTALLATION AND OPERATION:

- Check if voltage of your power system corresponds to the same specified on the machine label.
- Before using the appliance for the first time, turn the control knob to 300°C (572°F), close the lid and allow the appliance to heat for + / - 30 minutes. You will notice smoke appearing due to the internal insulation burning, which is normal.
- After 30 minutes heating, turn temperature control down to operating desired temperature, keep knob in this position until pilot light turns off, at this point the unit will be ready to be used.
- To turn off the unit turn knob completely towards left.

## CLEANING PROCEDURE

- Always ensure that the appliance is disconnected from the main power supply before cleaning.
- After appliance has cooled clean cooking surface and body using only a damp cloth. Never use water jet or immerse appliance in water.
- Wipe off appliance with a dry cloth and wait at least half an hour before re-connecting to main power outlet.



Since 1911

# Giant Flat Sandwich Grill

## Instruction Manual



**Model: GFSGA-120**



Since 1911

[www.cecilware.com](http://www.cecilware.com)

**Cecilware Corporation** 43-05 20th. Avenue, LIC NY 11105  
Tel: 800.935.2211 / 718.932.1414 • Fax: 718.932.7860

**Cecilware Corporation** 43-05 20th. Avenue, LIC NY 11105  
Tel: 800.935.2211 / 718.932.1414 • Fax: 718.932.7860



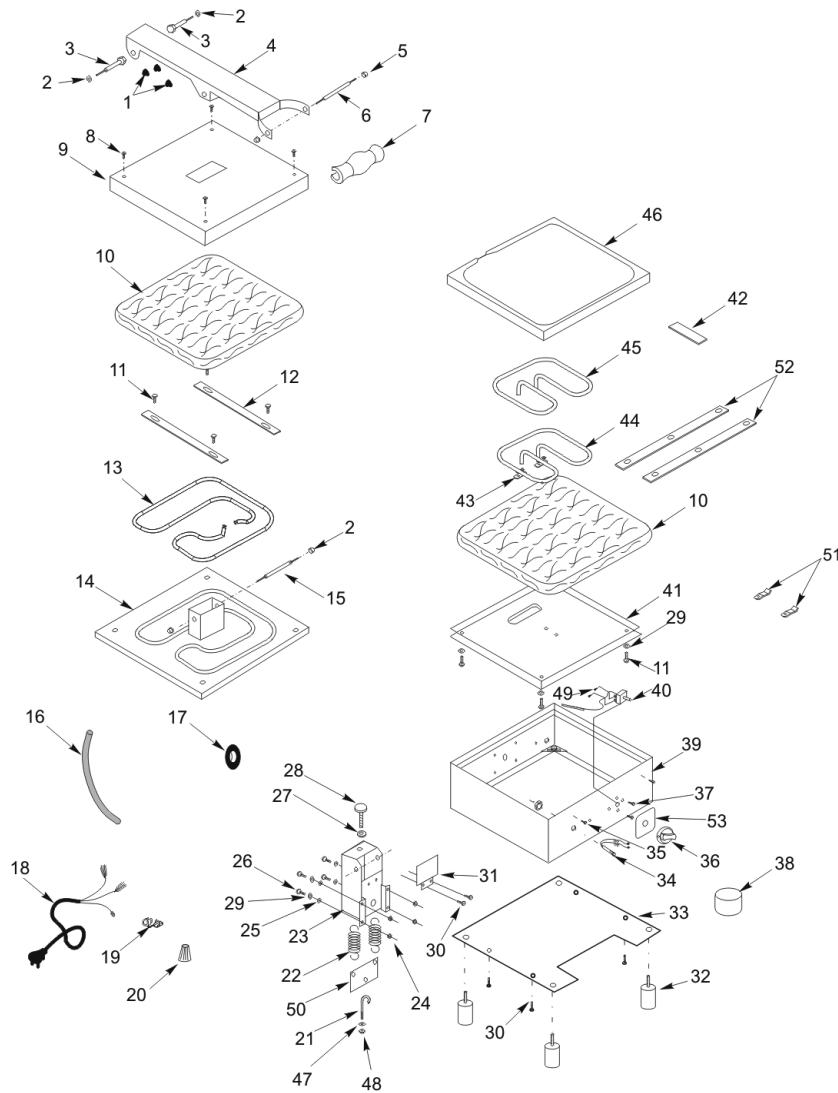
Since 1911

[www.cecilware.com](http://www.cecilware.com)

Printed 10/07 rev2

# Giant Flat Sandwich Grill

## Instruction Manual



Item	Part #	Description
1	N/A	Rubber Protector
2	N/A	1/4" Nut
3	04020	Shaft
4	04053	Arm
5	N/A	3/16" Nut
6	04045	Shaft
7	04044	Handle
8	N/A	3/16" Screw
9	N/A	Lid
10	N/A	Insulation
11	N/A	3/16" Screw
12	N/A	Heating Fixer
13	04035	Heating Element (550W)
14	N/A	Upper Heating Plate
15	N/A	Shaft
16	N/A	Protective Conduit
17	N/A	Rubber Protector
18	04040	Plug & Cord
19	04097	Cord Retainer
20	N/A	Wire Connector
21	N/A	Spring Regulator
22	N/A	Spring
23	04054	Arm Support
24	N/A	3/16" Screw
25	N/A	3/16" Washer Press
26	N/A	3/16" Screw
27	N/A	Nut Regulator
28	N/A	Screw Regulator
29	N/A	3/16" Washer
30	N/A	3,5 Screw
31	N/A	Plate Protector
32	04007	Foot
33	N/A	Bottom Cover Plate
34	04032	Pilot Light ETL
35	N/A	4,8 Screw
36	04029	50/300C Knob
37	04005	Special Screw
38	N/A	Grease Collector
39	N/A	Body
40	04028	Thermostat
41	N/A	Heating Plate Protection
42	N/A	Heating Connection
43	N/A	Heating Connection
44	04055	Heating Element (450W)
45	04056	Heating Element (550W)
46	N/A	Lower Heating Plate
47	N/A	1/4" Washer
48	N/A	1/4" Nut
49	N/A	Screw

Item	Part #	Description
50	04057	Spring Support
51	04042	Thermostat Bulb Retainer
52	N/A	Heating Element Retainer
53	N/A	Plate

### Specifications

Model	GFSGA-120
Volts	110
Watts	1550
Amps	14.1
Width Depth Height	17.8" 24½" 11.9"
Ship Weight	46.9 lbs.

### Wiring Diagram

