

INSTRUCTION MANUAL

-PLEASE read these instructions carefully before operating this appliance.
-The temperature is thermostatically controlled between the range of 50°C to 300°C (122° F to 572°F). A signal lamp adjacent to the thermostat indicates when the heating elements are energized.

IMPORTANT

- Check if voltage of your power system corresponds to the same specified on the machine label.
- These units are designed to operate on alternating current (A.C.) Only.
- DO NOT CONNECT TO DIRECT CURRENT (D.C.).
- Care should be taken when operating this appliance as HOT SURFACES may cause burns.
- Ensure that the power supply cord does not come into contact with hot surfaces.
- Do not leave unit in operation without an attendant.
- When not in use for long period unplug the appliance.

OPERATION

- Turn thermostat knob to 140 °C (284°F) and you'll see pilot lamp to light. Keep the knob in this position until pilot lamp to turn off. At this point the desired temperature was reached. When in use the thermostat will turn on and off automatically the heating elements, forcing the temperature to the adjusted point. The estimated time for preparing the waffle is about 5 minutes. To remove the product from plate use a knife or spatula while they still hot.
- To turn off the unit turn knob completely towards left.

CLEANING PROCEDURE

- Always ensure that the appliance is disconnected from the main power supply before cleaning.
- After appliance has cooled clean cooking surface and body using only a damp cloth. Never use water jet or immerse appliance in water.
- Wipe off appliance with a dry cloth and wait at least half an hour before re-connecting to main power outlet.



Since 1911

Round Waffle Baker

Instruction Manual



Model: WBM-120



Since 1911

www.cecilware.com

Cecilware Corporation 43-05 20th. Avenue, LIC NY 11105
Tel: 800.935.2211 / 718.932.1414 • Fax: 718.932.7860

Cecilware Corporation 43-05 20th. Avenue, LIC NY 11105
Tel: 800.935.2211 / 718.932.1414 • Fax: 718.932.7860



Since 1911

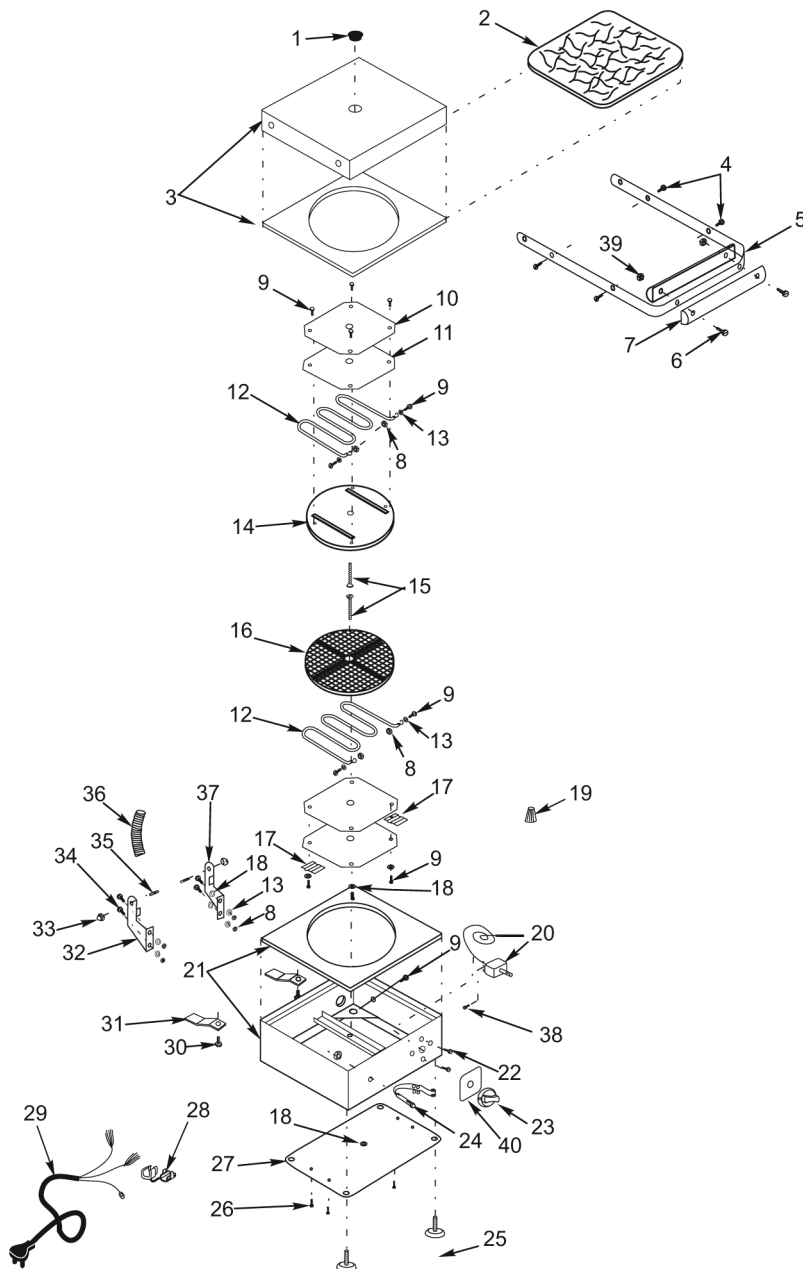
www.cecilware.com

Printed 10/07 rev2

Round Waffle Baker

Instruction Manual

Model: WBM-120



Item	Part #	Description
1	N/A	Rubber Finishing
2	N/A	Thermal Insulator
3	N/A	Lid
4	N/A	Screw (4.8)
5	04061	Handle Bar
6	N/A	Screw (5/32")
7	04018	Handle
8	N/A	Nut (3/16")
9	N/A	Screw (3/16")
10	N/A	Support Plate
11	N/A	Thermal Insulator
12	04012	Heating Element (600W)
13	N/A	Lock Washer (3/16")
14	N/A	Upper Heating Plate
15	N/A	Screw (1/4")
16	N/A	Lower Heating Plate
17	04038	Thermostat Bulb Retainer
18	N/A	Washer (3/16")
19	N/A	Wiring Connector
20	04093	Thermostat
21	N/A	Cabinet
22	04005	Thermostat Screw
23	04094	Knob
24	04032	Pilot Light
25	04017	Suction Foot
26	N/A	Screw (2.9)
27	N/A	Bottom Cover Plate
28	04097	Cord Retainer
29	04040	Plug & Cord
30	N/A	Screw (3/8")
31	N/A	Metal Shoe
32	04062	Right Hinge Support
33	N/A	Nut (1/4")
34	N/A	Screw (3/16")
35	04020	Hinge's Pin
36	N/A	Wiring Protection
37	04063	Left Hinge Support
38	04006	Screw (Thermostat Connection)
39	N/A	Nut (5/32")
40	N/A	Plate

Specifications	
Model	WBM-120
Volts	110
Watts	1200
Amps	10.9
Width Depth Height	11½" 15.35" 7"
Ship Weight	15 lbs.

Wiring Diagram

