

# INSTRUCTION MANUAL

**-PLEASE** read these instructions carefully before operating this appliance.  
-The temperature is thermostatically controlled between the range of 50°C to 300°C (122° F to 572°F). A signal lamp adjacent to the thermostat indicates when the heating elements are energized.

## IMPORTANT

- Check if voltage of your power system corresponds to the same specified on the machine label.
- These units are designed to operate on alternating current (A.C.) Only.
- DO NOT CONNECT TO DIRECT CURRENT (D.C.).**
- Care should be taken when operating this appliance as **HOT SURFACES** may cause burns.
- Ensure that the power supply cord does not touch hot surfaces.
- Do not leave unit in operation without an attendant.
- When not in use for long period unplug the appliance.

## OPERATION

- Turn thermostat knob to 180 °C (356°F) and you'll see pilot lamp flashes on. Keep the knob in this position until pilot lamp flashes off. At this point the desired temperature was reached. That is the moment to pour the dough on cavities (is recommended to butter both heating plates before pour the dough). When in use the thermostat will turn on and off automatically the heating elements, forcing the temperature to the adjusted point.
- The estimated time for preparing the waffle is about 5 minutes. Your may need to find the best time and temperature combination to get the result you want.
- To remove the product from plate use a knife or spatula while they still hot.
- To turn off the unit turn knob completely towards left.

## RECIPE

- Ingredients: -1 Cup flour; - 3 Teaspoons baking powder; - 1/4 teaspoon salt; -1 tablespoon sugar; 2 eggs, separated; -1 cup milk; - 4 tablespoons oil; -1 teaspoon vanilla
- Preparation: 1. In a large bowl, whisk together flour, baking powder, salt, and sugar. Set aside.  
2. Beat egg whites until stiff. Add milk and egg yolks to flour mixture. Stir until smooth.  
3. Add oil and vanilla to batter and mix well.  
4. Fold egg whites into the batter.

## CLEANING PROCEDURE

- Always ensure that the appliance is disconnected from the main power supply before cleaning.
- After appliance has cooled clean cooking surface and body using only a damp cloth. Never use water jet or immerse appliance in water.
- Wipe off appliance with a dry cloth and wait at least half an hour before re-connecting to main power outlet.
- According to use, is normal the cooking surfaces to darken. There is no need to Clean it.



Since 1911

# Belgium Waffle Baker

## Instruction Manual



**Model: BWB-120**



Since 1911

[www.cecilware.com](http://www.cecilware.com)

**Cecilware Corporation** 43-05 20th. Avenue, LIC NY 11105  
Tel: 800.935.2211 / 718.932.1414 • Fax: 718.932.7860



Since 1911

[www.cecilware.com](http://www.cecilware.com)

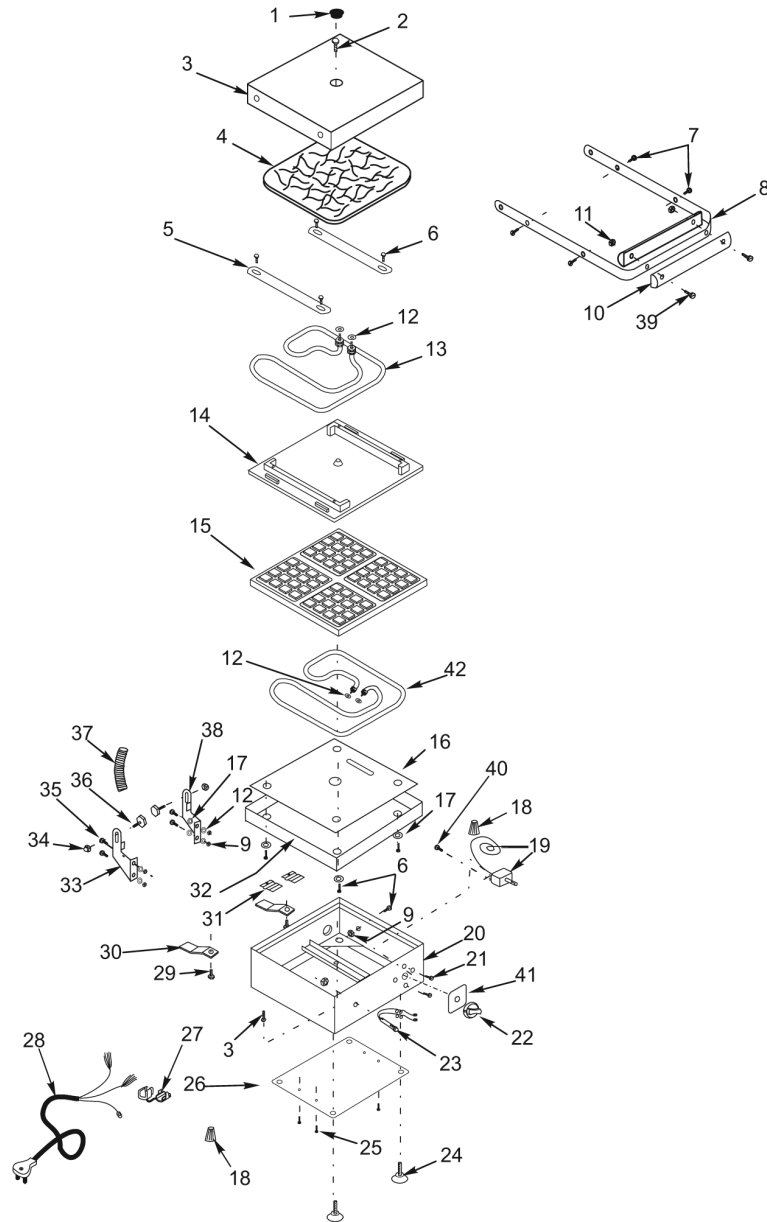
**Cecilware Corporation** 43-05 20th. Avenue, LIC NY 11105  
Tel: 800.935.2211 / 718.932.1414 • Fax: 718.932.7860

Printed 10/07 rev2

# Belgium Waffle Baker

## Instruction Manual

Model: BWB-120



| Item | Part # | Description                      |
|------|--------|----------------------------------|
| 1    | N/A    | Rubber Finishing                 |
| 2    | N/A    | Screw (1/4")                     |
| 3    | N/A    | Lid                              |
| 4    | N/A    | Thermal Insulation               |
| 5    | N/A    | Heating Element Support          |
| 6    | N/A    | Screw (3/16")                    |
| 7    | N/A    | Screw.(4,8)                      |
| 8    | 04061  | Handle Bar                       |
| 9    | N/A    | Nut (3/16")                      |
| 10   | 04018  | Handle                           |
| 11   | N/A    | Nut (5/32")                      |
| 12   | N/A    | Washer(3/16")                    |
| 13   | 04021  | Heating Element 850W             |
| 14   | N/A    | Upper Heating Plate              |
| 15   | N/A    | Lower Heating Plate              |
| 16   | N/A    | Heating Element Protection Plate |
| 17   | N/A    | Washer (3/16")                   |
| 18   | N/A    | Wiring Connector                 |
| 19   | 04028  | Thermostat                       |
| 20   | N/A    | Body                             |
| 21   | 04005  | Screw(Thermostat)                |
| 22   | 04029  | Knob                             |
| 23   | 04032  | Pilot Light                      |
| 24   | 04017  | Foot                             |
| 25   | N/A    | Screw (2,9)                      |
| 26   | N/A    | Bottom Cover Plate               |
| 27   | 04097  | Cord Retainer                    |
| 28   | 04040  | Plug & Cord                      |
| 29   | N/A    | Screw.(3/8")                     |
| 30   | N/A    | Metal Foot                       |
| 31   | 04039  | Thermostat Bulb Retainer         |
| 32   | N/A    | Heating Element Support Plate    |
| 33   | 04064  | Right Hinge Support              |
| 34   | N/A    | Nut (1/4")                       |
| 35   | N/A    | Screw.(3/16")                    |
| 36   | 04020  | Hinge's Pin                      |
| 37   | N/A    | Wiring Protection                |
| 38   | 04065  | Left Hinge Support               |
| 39   | N/A    | Screw (5/32")                    |
| 40   | 04006  | Screw (Thermostat Connection)    |
| 41   | N/A    | Plate                            |
| 42   | 04023  | Heating Element 1000W            |

| Specifications           |                      |
|--------------------------|----------------------|
| Model                    | BWB-120              |
| Volts                    | 110                  |
| Watts                    | 1850                 |
| Amps                     | 16.8                 |
| Width<br>Depth<br>Height | 11½"<br>15.4"<br>7½" |
| Ship Weight              | 15.8 lbs.            |

Wiring Diagram

