

Champion®

The Dishwashing Machine Specialists

Project _____
Item No. _____
Quantity _____

STANDARD FEATURES

- Three built-in chemical dispensing pumps
- Electric tank heater
- Built-in controls
- Upper and lower wash and rinse spray system
- Stainless steel wash and rinse chamber
- Polypropylene conveyor
- Right-to-left or left-to-right operation
- Two splash curtains

CG4/CG6

Pass Through Series
Fully Automatic
Glasswashing Machine



CG4/CG6 GLASSWASHER

OPTIONS & ACCESSORIES

- ☐ CG46C Waste Sink
- ☐ CG47 Drain Tray and Waste Collector
- ☐ CG12 SST Splash Guards (CG4)
- ☐ CG24 SST Splash Guards (CG6)
- ☐ CG48 SST Back Panel (CG4)
- ☐ CG72 SST Back Panel (CG6)
- ☐ Kit 264 Washdown Hose
- ☐ Kit 332 Casters, set of 4, 2 locking, 2 regular

SPECIFIER STATEMENT

Specified unit will be Champion model CG4 or CG6 pass-through conveyor type glasswasher.

Features include detergent, sanitizer and rinse aid pump, upper & lower wash/rinse arms, cold water final rinse, polypropylene conveyor, two splash curtains, processes 2,000 glasses/hr.

1 year parts, 90 day labor warranty.

Champion Industries, Inc.
P. O. Box 4149, Winston-Salem, NC 27115
Tel: 336/661-1556 Fax: 336/661-1979
www.championindustries.com

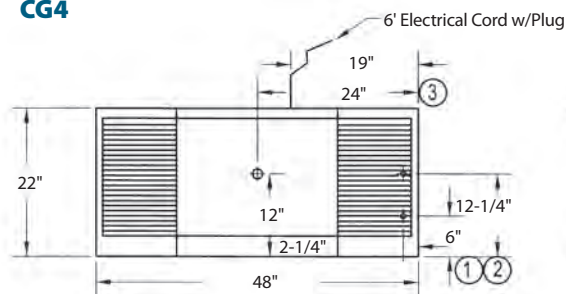
CG4/CG6

Pass Through Series
Fully Automatic
Glasswashing Machine

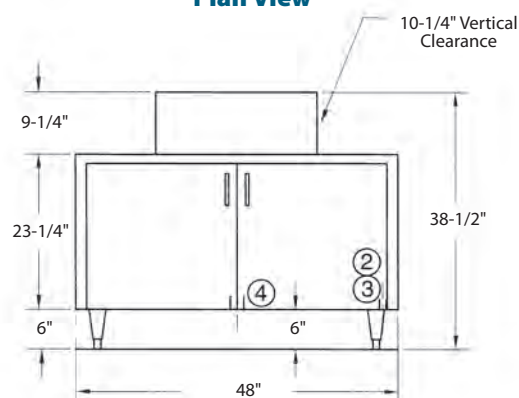
Champion®
The Dishwashing Machine Specialists

Dimensions shown in inches

CG4

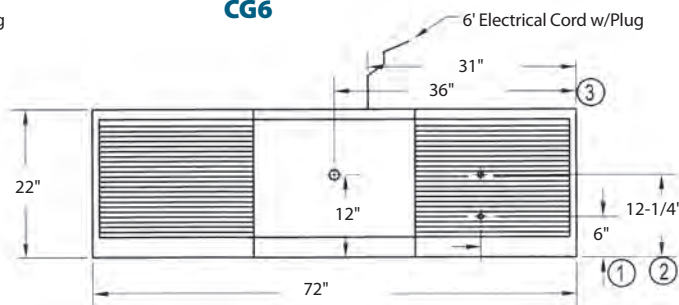


Plan View

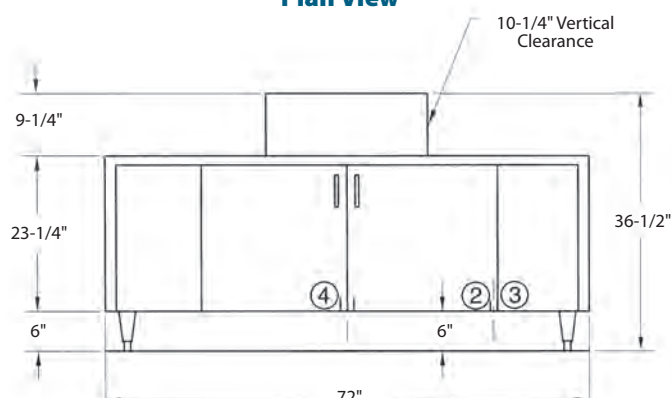


Front View

CG6



Plan View



Front View

Note: Both Doors 21-1/2" High
22" Wide

Utilities

*Electrical	208-230/60/1, 15 AMP
1 Hot Water	1/2" IPS. Flow pressure 25-95 psi
2 Cold Water	1/2" IPS. Flow pressure 25-95 psi
3 Drain	1-1/2" tailpiece. Connect to drain size according to local plumbing code.

	Uncrated		Crated	
	CG4	CG6	CG4	CG6
Height*	38-1/2"	38-1/2"	49"	49"
Width	48"	72"	63"	76-1/2"
Depth	22"	22"	27-1/2"	27-1/2"
Ship Wt. Lbs.	225	285	255	325
*Adjustable foot height 1-3/4"				

*** Note:** CG4/CG6 models supplied with 4 ft. plug-in cord (NEMA 6-15P).

Warning: Plumbing and electrical connections should be made by qualified workmen who will observe all the applicable plumbing, sanitary and safety codes.

SPECIFICATIONS

Capacity (hr)

2-1/2" glasses/hr. 2000

Water consumption

Cold Water (approx.) 2.8 gpm
Hot Water (initial fill) 2.8 gpm
(Max. use – approx. 10 gph)

Temperatures °F

Inlet water (hot) min/max 145/160
Inlet water (cold) 75

Heating

Tank heat, electric, (kW) 3

Clearance

Through machine (inches) 10-1/4"

Conveyor Speed

Inches per minute 14