

Champion®

The Dishwashing Machine Specialists

Project _____
Item No. _____
Quantity _____

STANDARD FEATURES

- Dual-pawl cradle drive system
- One-piece cast stainless steel upper & lower spray arm assemblies
- Internal removable scrap baskets with two-piece scrap screens
- Standard vertical opening accommodates 18" x 26" sheet pans
- Wide 26" leakproof door, internally-fitted
- Anti-jam conveyor drive system
- Energy Sentinel (Idle pump shut-off)
- Convenient top-mounted controls
- Automatic tank fill
- Common utility connections
- Door safety switch
- Door activated drain closure
- Enclosure panels (front and sides)
- Splash shields
- Low-water tank heat protection
- Rinse-saver device
- Stainless steel heavy-gauge construction, including base and feet
- Electric tank heat
- Wash pump 2 Hp motor
- Stainless steel pump and impeller
- Single-point electrical connection

MODEL 44 LT

44" Single Tank
Low-Temperature
Rack Conveyor Dishwashing Machine



Shown with Vent Cowl
and Damper Option

SPECIFIER STATEMENT

Specified unit will be Champion Model 44 LT low temperature rack conveyor dishwashing machine. Constructed of Type 304 stainless steel and measuring 44" long with 20-3/4" vertical opening. Features top mounted control cabinet; upper and lower one-piece stainless steel spray arm assemblies, removable internal scrap basket with two-piece scrap screen. Large 26" wash door with front access and double-hook safety latch. Anti-jam conveyor drive system.

1 year parts and labor warranty.



2674 N. Service Road,
Jordan Station, Ontario, Canada L0R 1S0
Tel: 905/562-4195 Fax: 905/562-4618

E-SERIES

Champion Industries, Inc.
P. O. Box 4149, Winston-Salem, NC 27115
Tel: 336/661-1556 Fax: 336/661-1979
www.championindustries.com

CH080

(3M) 9/06 Printed in U.S.A.



MODEL 44 LT RACK CONVEYOR

Champion[®]

The Dishwashing Machine Specialists

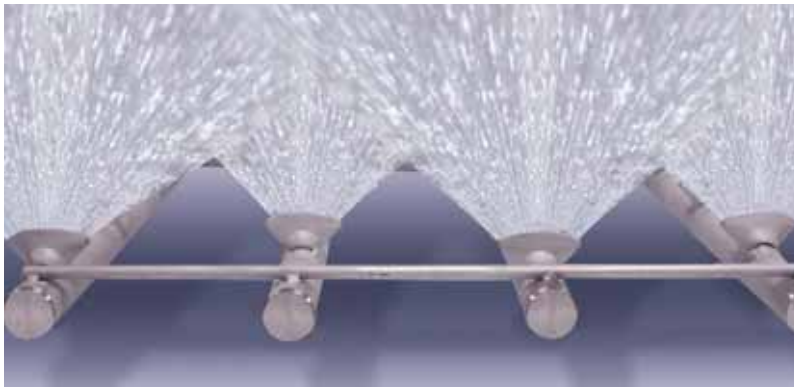
MODEL 44 LT

44" Single Tank
Low-Temperature
Rack Conveyor Dishwashing Machine

EFFICIENT NEW SPRAY SYSTEM DESIGN

To make the E-Series more efficient and more forgiving we designed a new spray arm system that includes:

- Wall-of-water spray pattern via stainless steel fluted directional spray jets for quick and efficient washing
- Easily removable spray arm assembly for ease of cleaning
- Stainless steel pump housing and impeller
- Larger tanks hold more water for better washing results



Wall-of-Water Spray Pattern



Large Heating Element



One-Piece Cast Stainless Steel Spray Assembly



Two-Piece Scrap Screen



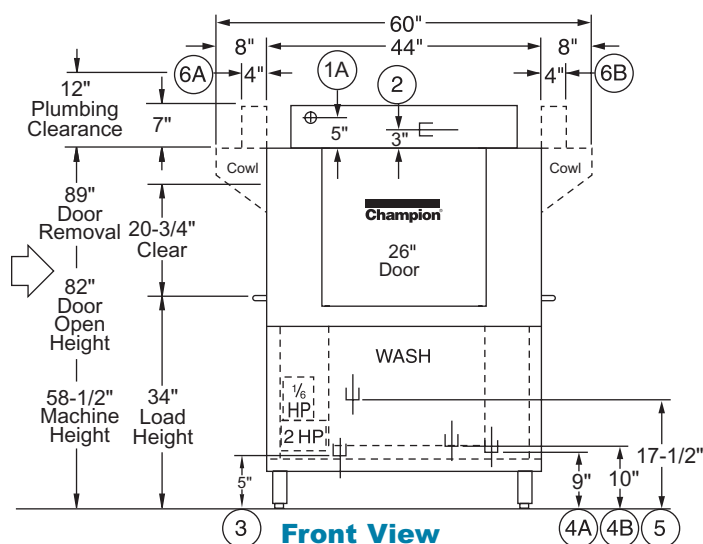
Built-in Scrap Basket



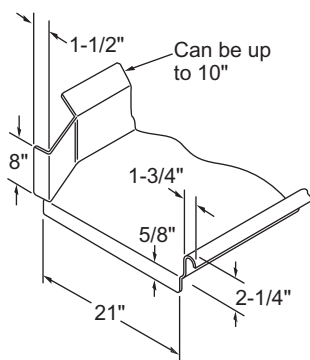
MODEL 44 LT

44" Single Tank
Low-Temperature
Rack Conveyor Dishwashing Machine

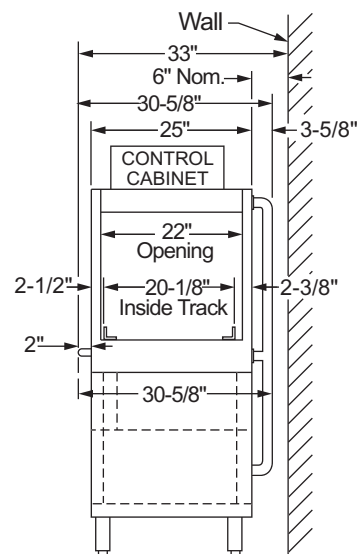
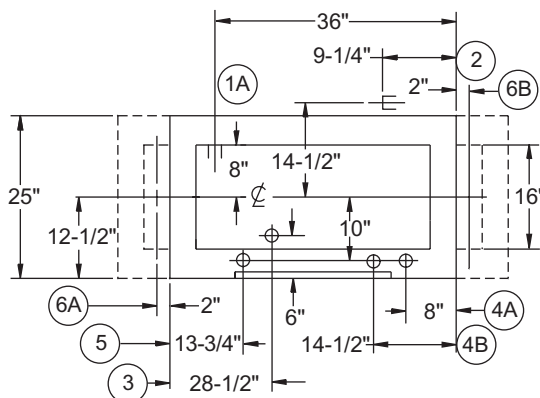
Champion®
The Dishwashing Machine Specialists



Left-to-Right Operation



Suggested Table Construction



44" Single Tank Low-Temperature Rack Conveyor Dishwashing Machine

The Dishwashing Machine Specialists



MODEL 44 LT

Champion®

The Dishwashing Machine Specialists

44" Single Tank
Low-Temperature
Rack Conveyor Dishwashing Machine

Volume crated: **130 cu. ft.**
Shipping weight crated: **600 lbs.**

Dimensions shown in inches

Utilities

1 Electrical Machine connection (see table)
2 Hot Water 3/4" NPT 140°F/60°C min. hot water connection. Flow pressure 20-22 psi.
3 Drain 1-1/2" NPT machine connection. Maximum flow 15 gpm.
4 Steam A 3/4" NPT machine connection. Flow pressure 15-30 PSI. (Steam coil) B 3/4" NPT machine connection. Flow pressure 15-30 PSI. (Steam injector)
5 Condensate 1/2" NPT machine return to boiler
6 Vents (when required) A Load end: 200 CFM @ 1/4" S.P. B Unload end: 400 CFM @ 1/4" S.P. (With blower-dryer increase room ventilation by 600 CFM.)

Machine only

Elec. Specs.	Rated Amps	Minimum Supply Ckt. Conductor Ampacity	Maximum Overcurrent Protective Device
208/60/1	94	125	125
240/60/1	83	110	110
208/60/3	58	70	70
240/60/3	47	60	60
480/60/3	23	30	30
575/60/3	18	25	25

Steam or Hot Water Heat

Elec. Specs.	Rated Amps	Minimum Supply Ckt. Conductor Ampacity	Maximum Overcurrent Protective Device
208/60/1	16	20	20
240/60/1	15	20	20
208/60/3	8	15	15
240/60/3	8	15	15
480/60/3	4	15	15
575/60/3	3	15	15

SPECIFICATIONS

Capacity

Racks per hr. (NSF rated)	180
Wash tank (gal.)	20
Conveyor speed (ft./min.)	5

Motor Horsepower

Drive	1/6
Wash	2

Water Consumption

Gal. per hr. (max. use)	278
Gal. per rack	1.54

Temperatures °F

Wash	120
Final Rinse	140

Heating

Tank heat, electric (kW)	15
Tank heat, steam (lbs./hr required at 15 psi flow pressure)	75

Standard 20" x 20" rack complement

Peg	2
Flat	1

Warning: Plumbing and electrical connections should be made by qualified personnel who will observe all the applicable plumbing, sanitary, safety codes and the National Electrical Code.

Note: Water Hammer Arrestor (meeting ASSE-1010 standard or equivalent) to be supplied (by others) in common water supply line at service connection.

Plumbing Notes: Because of the variation in house-supplied steam and water pressures, steam and water pressure regulating valves (PRVs) may be needed. The PRVs can be purchased from Champion or obtained locally.

Venting Notes: Fabricated duct size: 3-7/8" x 15-7/8" (Outside dimensions)

Caution: Silver, aluminum and pewter are attacked by sodium hypochlorite (liquid bleach). Champion low-temperature dishwashing machines are designed for liquid bleach solutions not exceeding 50 ppm.

Due to an ongoing value analysis program at Champion, specifications contained in this catalog are subject to change without notice.

Champion Industries, Inc., P. O. Box 4149, Winston-Salem, NC 27115 • 336/661-1556 • Fax: 336/661-1979 • www.championindustries.com
2674 N. Service Road, Jordan Station, Ontario, Canada L0R 1S0 • 905/562-4195 • Fax: 905/562-4618

MODEL 44 LT

44" Single Tank
Low-Temperature
Rack Conveyor Dishwashing Machine

Champion®

The Dishwashing Machine Specialists

OPTIONS & ACCESSORIES

- ☐ Tank heat: choice of steam coils or steam injector
- ☐ Blower-dryer with 60" hood, table, legs and cradle assembly
- ☐ Cantilever sideloader (with or without hood) for 90° load operation
- ☐ Extended pawl bar (extended drive unit) for use with load tabling
- ☐ 90° Motorized rack curve (unload)
- ☐ 180° Motorized rack curve (unload)
- ☐ Racks: peg or flat racks (specify type)
- ☐ Roller conveyor table (mobile or stationary)
- ☐ Steam pressure regulating valve, unmounted
- ☐ Table limit switch, unmounted (recommended on all rack conveyor installations)
- ☐ Vent cowl, stainless steel with 7" stack and locking damper
- ☐ Extended Vent hood, stainless steel with 7" stack and locking damper
- ☐ Water pressure regulating valve (unmounted)
- ☐ Vent fan control
- ☐ Water hammer kit
- ☐ Drain temp kit
- ☐ Vertical clearance through machine: 24" (instead of standard 20-3/4") for large ware

Model MRC 180

180° Motorized
Rack Curve
(Must be ordered with
Roller Conveyor Table)



Model MRC 90

90° Motorized
Rack Curve
(Must be ordered with
Roller Conveyor Table)



**Cantilever
Sideloader**
(No hood)

Model RCT 64 or RCT 84

Roller
Conveyor Table



Due to an ongoing value analysis program at Champion, specifications contained in this catalog are subject to change without notice.

Champion Industries, Inc., P. O. Box 4149, Winston-Salem, NC 27115 • 336/661-1556 • Fax: 336/661-1979 • www.championindustries.com
2674 N. Service Road, Jordan Station, Ontario, Canada L0R 1S0 • 905/562-4195 • Fax: 905/562-4618