

# Champion®

The Dishwashing Machine Specialists

Project \_\_\_\_\_

Item No. \_\_\_\_\_

Quantity \_\_\_\_\_

## STANDARD FEATURES

- Dual-pawl cradle drive system
- One-piece cast stainless steel upper & lower spray arm assemblies
- Internal removable scrap baskets with two-piece scrap screens
- Standard vertical opening accommodates 18" x 26" sheet pans
- Wide 15-1/2" and 26" leakproof doors, internally-fitted
- Anti-jam conveyor drive system
- Energy Sentinel (Idle pump shut-off)
- Convenient top-mounted controls
- Automatic tank fill
- Common utility connections
- Door safety switch
- Door activated drain closure
- Enclosure panels (front and sides)
- Splash shields
- Low-water tank heat protection
- Rinse-saver device
- Stainless steel heavy-gauge construction, including base and feet
- Electric tank heat
- Prewash pump 1 Hp motor
- External prewash scrap basket
- Wash pump 2 Hp motor
- Stainless steel pumps and impeller
- Single-point electrical connection

## MODEL 66 LTPW

44" Single Tank with 22" Prewash  
Low-Temperature  
Rack Conveyor Dishwashing Machine



Shown with Vent Cowl  
and Damper Option

## SPECIFIER STATEMENT

Specified unit will be Champion Model 66 LTPW low temperature rack conveyor dishwashing machine with 22" prewash. Constructed of Type 304 stainless steel and measuring 44" long with 20-3/4" vertical opening. Features top mounted control cabinet; upper and lower one-piece stainless steel spray arm assemblies, removable internal scrap basket with two-piece scrap screen. Large 15-1/2" prewash and 26" wash and door with front access and double-hook safety latch. Anti-jam conveyor drive system.

1 year parts and labor warranty.



2674 N. Service Road,  
Jordan Station, Ontario, Canada L0R 1S0  
Tel: 905/562-4195 Fax: 905/562-4618

### E-SERIES

Champion Industries, Inc.  
P. O. Box 4149, Winston-Salem, NC 27115  
Tel: 336/661-1556 Fax: 336/661-1979  
[www.championindustries.com](http://www.championindustries.com)

# Champion<sup>®</sup>

The Dishwashing Machine Specialists

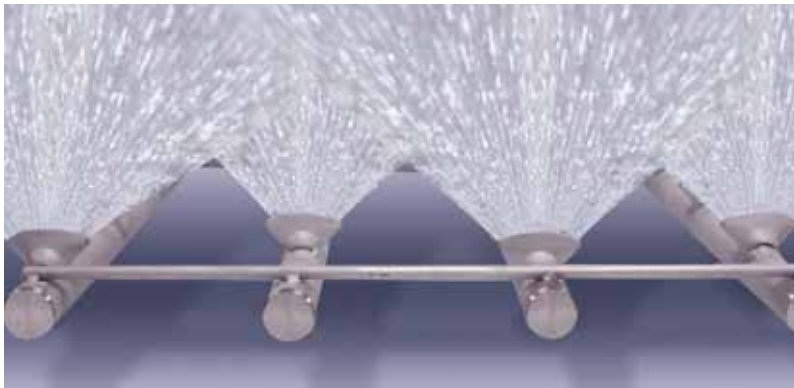
## MODEL 66 LTPW

44" Single Tank with 22" Prewash  
Low-Temperature  
Rack Conveyor Dishwashing Machine

### EFFICIENT NEW SPRAY SYSTEM DESIGN

To make the E-Series more efficient and more forgiving we designed a new spray arm system that includes:

- Wall-of-water spray pattern via stainless steel fluted directional spray jets for quick and efficient washing
- Easily removable spray arm assembly for ease of cleaning
- Stainless steel pump housing and impeller
- Larger tanks hold more water for better washing results



Wall-of-Water Spray Pattern



Large Heating Element



One-Piece Cast Stainless Steel Spray Assembly



Two-Piece Scrap Screen



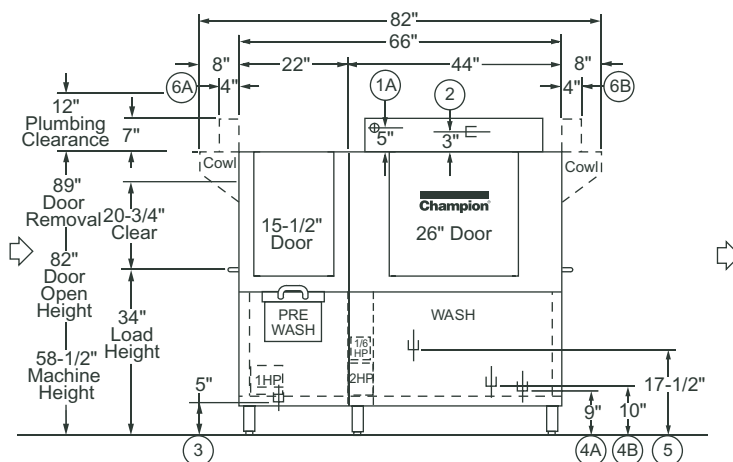
Built-in Scrap Basket

## E-SERIES

# MODEL 66 LTPW

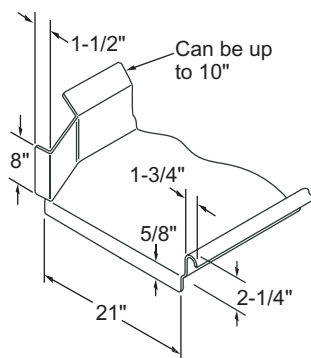
44" Single Tank with 22" Prewash  
Low-Temperature  
Rack Conveyor Dishwashing Machine

**Champion®**  
The Dishwashing Machine Specialists

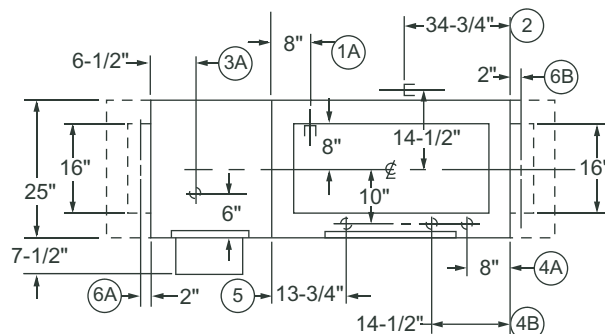


**Front View**

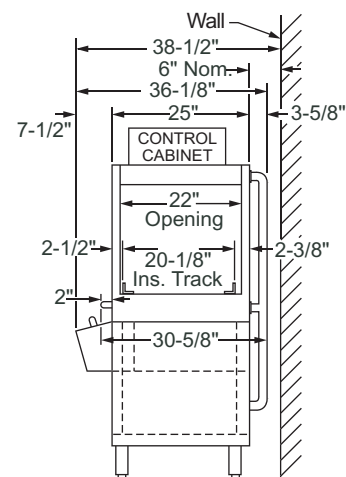
**Left-to-Right Operation**



**Suggested Table Construction**



**Plan View**

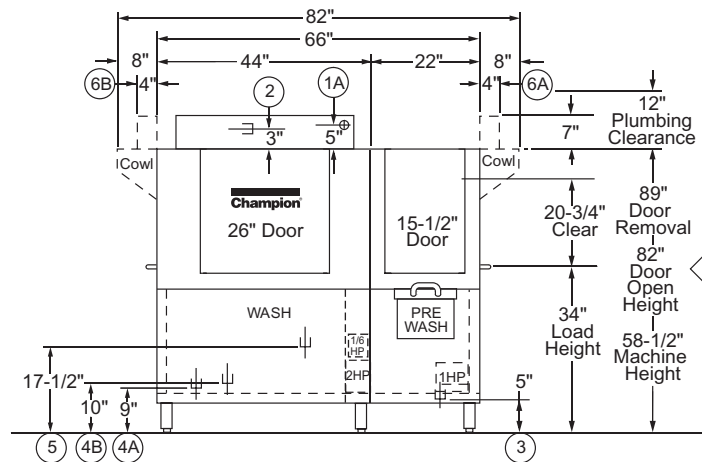


**End View**

# MODEL 66 LTPW

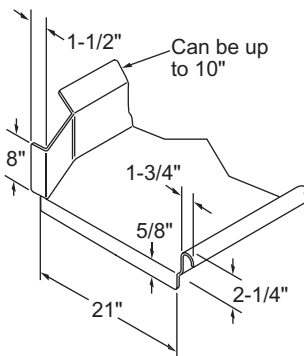
44" Single Tank with 22" Prewash  
Low-Temperature  
Rack Conveyor Dishwashing Machine

**Champion®**  
The Dishwashing Machine Specialists

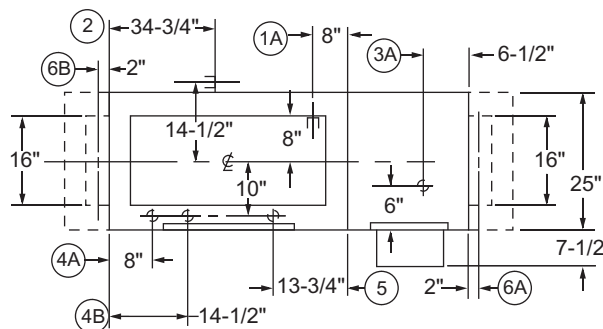


**Front View**

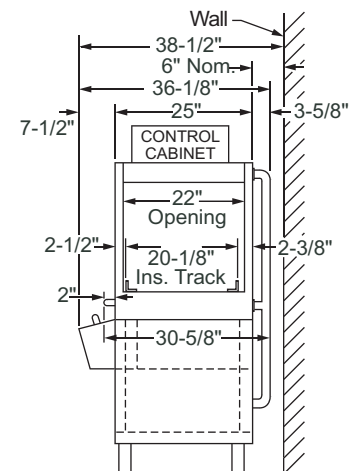
**Right-to-Left Operation**



**Suggested Table Construction**



**Plan View**



**End View**

# MODEL 66 LTPW

# Champion®

The Dishwashing Machine Specialists

44" Single Tank with 22" Prewash  
Low-Temperature  
Rack Conveyor Dishwashing Machine

Volume crated: **130 cu. ft.**  
Shipping weight crated: **800 lbs.**

Dimensions shown in inches

Utilities	
<b>1 Electrical</b>	Machine connection (see Table)
<b>2 Hot Water</b>	3/4" NPT 140°F/60°C min. hot water connection. Flow pressure 20-22 psi.
<b>3 Drain</b>	1-1/2" NPT machine connection. Maximum flow 15 gpm.
<b>4 Steam</b>	<b>A</b> 3/4" NPT machine connection. Flow pressure 15-30 PSI. (Steam coil) <b>B</b> 3/4" NPT machine connection. Flow pressure 15-30 PSI. (Steam injector)
<b>5 Condensate</b>	1/2" NPT machine return to boiler
<b>6 Vents (when required)</b>	<b>A</b> Load end: 200 CFM @ 1/4" S.P. <b>B</b> Unload end: 400 CFM @ 1/4" S.P. (With blower-dryer increase room ventilation by 600 CFM.)

Machine only			
Elec. Specs.	Rated Amps	Minimum Supply Ckt. Conductor Ampacity	Maximum Overcurrent Protective Device
208/60/1	77	100	100
240/60/1	68	90	90
208/60/3	43	60	60
240/60/3	37	45	45
480/60/3	18	25	25
575/60/3	14	20	20

Steam or Hot Water Heat			
Elec. Specs.	Rated Amps	Minimum Supply Ckt. Conductor Ampacity	Maximum Overcurrent Protective Device
208/60/1	25	35	35
240/60/1	22	30	30
208/60/3	13	20	20
240/60/3	11	15	15
480/60/3	6	15	15
575/60/3	5	15	15

## SPECIFICATIONS

### Capacity

Racks per hr. (NSF rated)	180
Wash tank (gal.)	20
Conveyor speed (ft./min.)	5

### Motor Horsepower

Drive	1/6
Wash	2
Prewash	1

### Water Consumption

Gal. per hr. (max. use)	278
Gal. per rack	1.54

### Temperatures °F

Wash	120
Final Rinse	140

### Heating

Tank heat, electric (kW)	15
Tank heat, steam (lbs./hr required at 15 psi flow pressure)	75

### Standard 20" x 20" rack complement

Peg	2
Flat	1

**Warning:** Plumbing and electrical connections should be made by qualified personnel who will observe all the applicable plumbing, sanitary, safety codes and the National Electrical Code.

**Note:** Water Hammer Arrestor (meeting ASSE-1010 standard or equivalent) to be supplied (by others) in common water supply line at service connection.

**Plumbing Notes:** Because of the variation in house-supplied steam and water pressures, steam and water pressure regulating valves (PRVs) may be needed. The PRVs can be purchased from Champion or obtained locally.

**Venting Notes:** Fabricated duct size: 3-7/8" x 15-7/8" (Outside dimensions)

**Caution:** Silver, aluminum and pewter are attacked by sodium hypochlorite (liquid bleach). Champion low-temperature dishwashing machines are designed for liquid bleach solutions not exceeding 50 ppm.

Due to an ongoing value analysis program at Champion, specifications contained in this catalog are subject to change without notice.

Champion Industries, Inc., P. O. Box 4149, Winston-Salem, NC 27115 • 336/661-1556 • Fax: 336/661-1979 • www.championindustries.com  
2674 N. Service Road, Jordan Station, Ontario, Canada L0R 1S0 • 905/562-4195 • Fax: 905/562-4618

# MODEL 66 LTPW

44" Single Tank with 22" Prewash  
Low-Temperature  
Rack Conveyor Dishwashing Machine

# Champion®

The Dishwashing Machine Specialists

## OPTIONS & ACCESSORIES

- ☐ Tank heat: choice of steam coils or steam injector
- ☐ Blower-dryer with 60" hood, table, legs and cradle assembly
- ☐ Cantilever sideloader (with or without hood) for 90° load operation
- ☐ Extended pawl bar (extended drive unit) for use with load tabling
- ☐ 90° Motorized rack curve (unload)
- ☐ 180° Motorized rack curve (unload)
- ☐ Racks: peg or flat racks (specify type)
- ☐ Roller conveyor table (mobile or stationary)
- ☐ Steam pressure regulating valve (unmounted)
- ☐ Table limit switch, unmounted (recommended on all rack conveyor installations)
- ☐ Vent cowl, stainless steel with 7" stack and locking damper
- ☐ Extended Vent hood, stainless steel with 7" stack and locking damper
- ☐ Water pressure regulating valve (unmounted)
- ☐ Vent fan control
- ☐ Water hammer kit
- ☐ Drain temp kit
- ☐ Vertical clearance through machine: 24" (instead of standard 20-3/4") for large ware

### Model MRC 180

180° Motorized  
Rack Curve  
(Must be ordered with  
Roller Conveyor Table)



### Model MRC 90

90° Motorized  
Rack Curve  
(Must be ordered with  
Roller Conveyor Table)



**Cantilever  
Sideloader**  
(No hood)

### Model RCT 64 or RCT 84

Roller  
Conveyor Table



Due to an ongoing value analysis program at Champion, specifications contained in this catalog are subject to change without notice.

Champion Industries, Inc., P. O. Box 4149, Winston-Salem, NC 27115 • 336/661-1556 • Fax: 336/661-1979 • [www.championindustries.com](http://www.championindustries.com)  
2674 N. Service Road, Jordan Station, Ontario, Canada L0R 1S0 • 905/562-4195 • Fax: 905/562-4618