

# Champion<sup>®</sup>

The Dishwashing Machine Specialists

Project \_\_\_\_\_  
Item No. \_\_\_\_\_  
Quantity \_\_\_\_\_

## STANDARD FEATURES

- Dual-pawl cradle drive system
- One-piece cast stainless steel upper & lower spray arm assemblies
- Internal removable scrap baskets with two-piece scrap screens
- Standard vertical opening accommodates 18" x 26" sheet pans
- Wide 15-1/2" and 26" leakproof doors, internally-fitted
- Anti-jam conveyor drive system
- Energy Sentinel (Idle pump shut-off)
- Convenient top-mounted controls
- Automatic tank fill
- Common utility connections
- Door safety switch
- Door activated drain closures
- Enclosure panels (front and sides)
- Splash shields
- Low-water tank heat protection
- Rinse-saver device
- Stainless steel heavy-gauge construction, including base and feet
- Prewash pump 1 Hp motor
- External prewash scrap basket
- Wash pump 2 Hp motor
- Stainless steel pumps and impellers
- Single-point electrical connection



## 66 WSPW 66"

Gas Heated Water Saver  
High Temperature Rack Conveyor  
Single-tank Dishwashing Machine with Prewash



## SPECIFIER STATEMENT

Specified unit will be Champion model 66WSPW gas heated water saver high temperature rack conveyor single-tank dishwashing machine with prewash.

Features top mounted control cabinet; upper and lower one-piece stainless steel spray arm assemblies, removable internal scrap basket with two-piece scrap screen. Large 15-1/2" prewash and 26" wash and door with front access and double-hook safety latch. Anti-jam conveyor drive system.

1 year parts and labor warranty.

Single  
Source  
Gas Heating  
Systems



**E-SERIES**

Champion Industries, Inc.  
P. O. Box 4149, Winston-Salem, NC 27115  
Tel: 336/661-1556 Fax: 336/661-1979  
[www.championindustries.com](http://www.championindustries.com)

66WSPW GAS RACK CONVEYOR



The Dishwashing Machine Specialists



## 66WSPW GAS RACK CONVEYOR

Gas Heated Water Saver  
High Temperature Rack Conveyor  
Single-tank Dishwashing Machine

### Utilities

#### 1 Electrical

- A. Machine connection (see box)
- B. Booster connection requires 15 amps @ 120/60/1

#### 2 Hot Water

- 3/4" NPT 140°F hot water connection. Flow pressure 25 psi.

#### 3 Drain

- A. 1-1/2" NPT machine connection.
- B. T/P relief valve to open drain
- C. 1/2" NPT vent to open drain

#### 4 Vents

- (Dishwasher) (4" x 16" outside)
- A. Load end: 200 CFM @ 1/4" S.P.
- B. Unload end: 400 CFM @ 1/4" S.P.

#### 5 Gas

- 3/4" NPT requires: LP Gas – 52 CFH for 130,000 BTU/hr. Natural Gas – 130 CFH for 130,000 BTU/hr.

#### 6 Gas Flue

- 4" OD exhaust
- A. Left end of booster (specify when ordering)
- B. Rear of booster (specify when ordering)

### Machine Load Amps

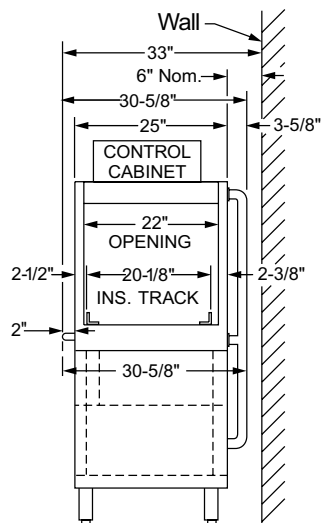
Elec. Specs.	Rated Amps	Minimum Supply Ckt. Conductor Ampacity	Maximum Overcurrent Protective Device
208/60/1	16	20	20
240/60/1	15	20	20
208/60/3	8	15	15
240/60/3	8	15	15
480/60/3	4	15	15
575/60/3	3	15	15

**Warning:** Gas burner intake and exhaust venting required in accordance with local codes. Exhaust must be vented outside.

**Warning:** Plumbing, gas and electrical connections should be made by qualified personnel who will observe all the applicable plumbing, sanitary, safety codes and the National Electrical Code.

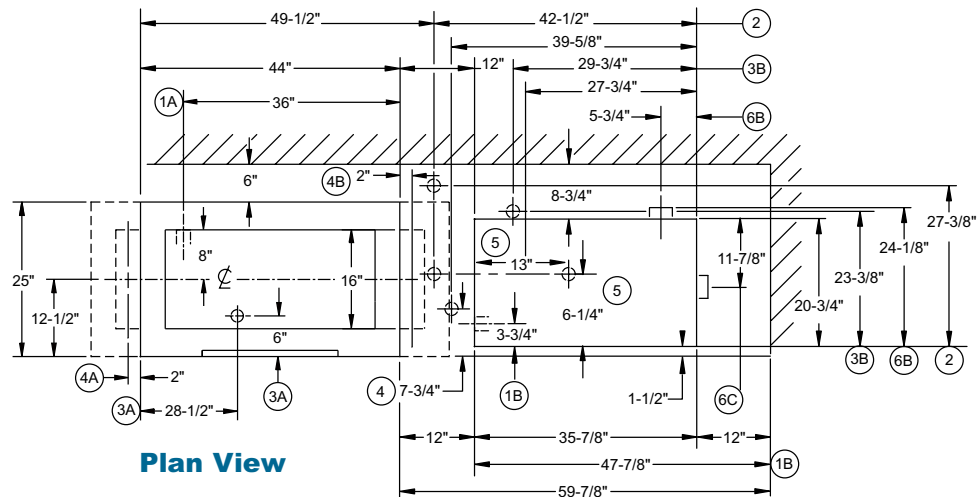
**Note:** Water Hammer Arrestor (meeting ASSE-1010 standard or equivalent) to be supplied (by others) in common water supply line at service connection.

### Details, Dimensions & Connections

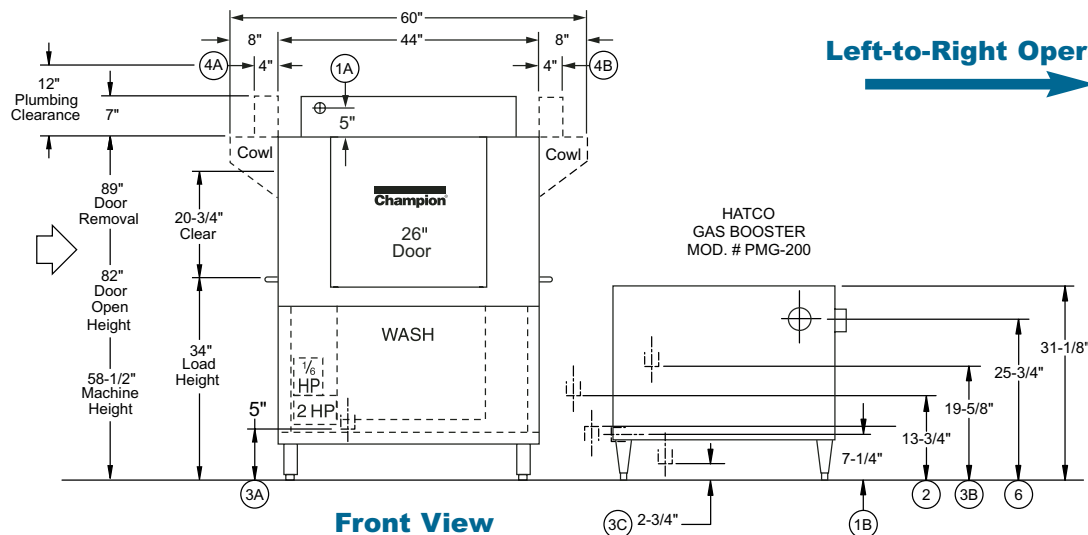


Volume crated: **252 cu. ft.**  
Shipping weight crated: **1550 lbs.**

Dimensions shown in inches



Plan View



Front View

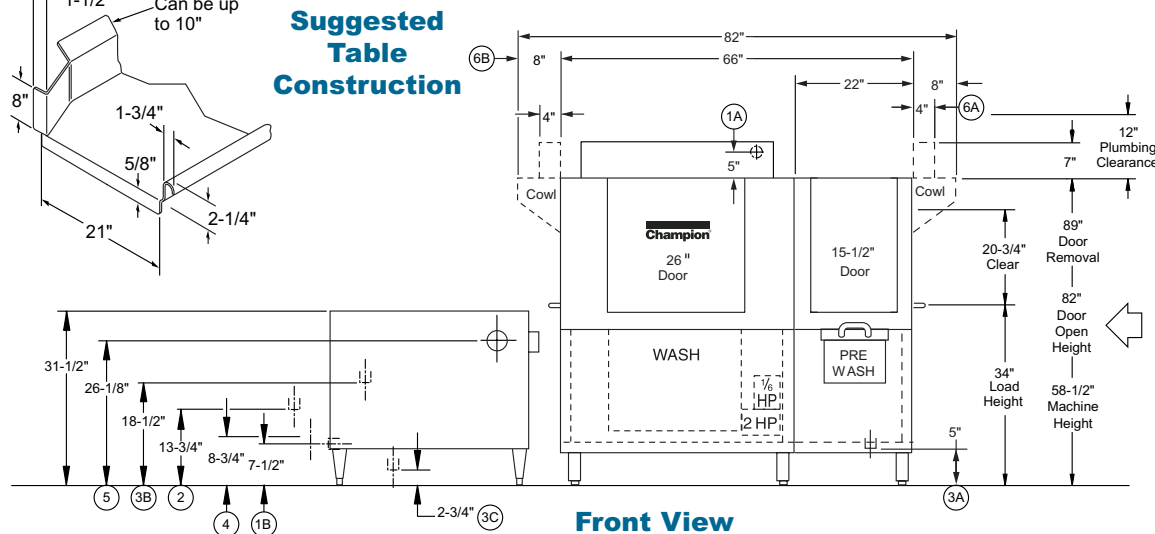
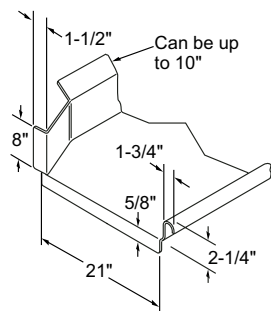
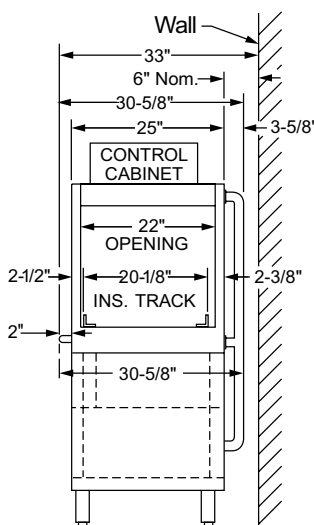
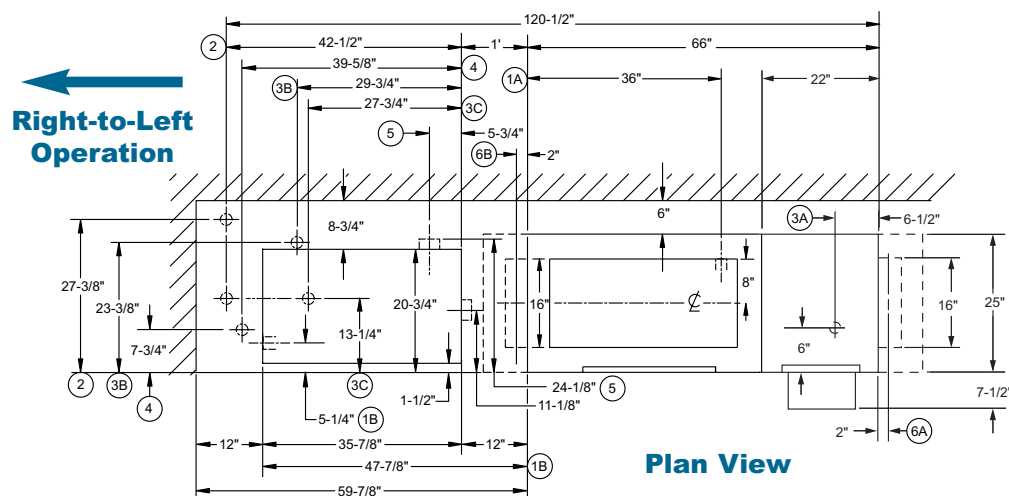
# Champion®

The Dishwashing Machine Specialists



## 66WSPW GAS RACK CONVEYOR

Gas Heated Water Saver  
High Temperature Rack Conveyor  
Single-tank Dishwashing Machine



### SPECIFICATIONS

#### Capacities

Racks per hr. (NSF)	126
Wash tank (gal.)	20
Conveyor speed (ft./min.)	3.5

#### Motor horsepower

Drive	1/6
Prewash	1
Wash	2

#### Water consumption

Gal. per hr. (Max. use)	124
-------------------------	-----

#### Temperatures °F

Wash	160
Rinse	180

#### Heating

Tank heat booster, gas	
Natural	130,000 BTU/hr.
LP	130,000 BTU/hr.
40° rise & 70° rise booster	
Natural	200,000 BTU/hr.
LP	200,000 BTU/hr.

#### Venting

Load end (minimum cfm)	150
Unload end (minimum cfm)	400

#### Standard 20" x 20" Rack Complement

Flat	1
Peg	2

**Note:** The booster and machine come fully interplumbed complete with a blended phosphate water treatment system, pressure regulating valve, water hammer arrestor, ASME temperature and pressure relief valve, drain valve, circulator pump, and temperature gauges installed and ready for connection to your water supply.

**Venting Notes:** Fabricated duct size: 3-7/8" x 15-7/8" (Outside dimensions)

**Note:** Specify vent location option on booster when ordering.

# 66 WSPW 66"

Gas Heated Water Saver  
High Temperature Rack Conveyor  
Single-tank Dishwashing Machine with Prewash



**Champion®**  
The Dishwashing Machine Specialists

## OPTIONS & ACCESSORIES

- ☐ Blower-dryer with 60" hood, table, legs and cradle bar assembly
- ☐ Cantilever sideloader (with or without hood) for 90° load operation (see Table Systems catalog sheet)
- ☐ Extended pawl bar (extended drive unit) for use with load tabling
- ☐ 90° Motorized rack curve (specify load or unload) (see Table Systems catalog sheet)
- ☐ 180° Motorized rack curve (specify load or unload) (see Table Systems catalog sheet)
- ☐ Racks: peg or flat racks (specify type)
- ☐ Roller conveyor table (mobile or stationary)
- ☐ Table limit switch, unmounted (recommended on all rack conveyor installations)
- ☐ Vent cowl, stainless steel with 7" stack and locking damper
- ☐ Extended vent hood, stainless steel with 7" stack and locking damper
- ☐ Water pressure regulating valve (unmounted)
- ☐ Vent fan control switch
- ☐ Water hammer kit
- ☐ Drain temp kit
- ☐ Vertical clearance through machine: 24" (instead of standard 20-3/4") for large ware

### Model MRC 180

180° Motorized  
Rack Curve  
(Must be ordered with  
Roller Conveyor Table)



### Model MRC 90

90° Motorized  
Rack Curve  
(Must be ordered with  
Roller Conveyor Table)



**Cantilever  
Sideloader**  
(No hood)

### Model RCT 64 or RCT 84

Roller  
Conveyor Table

