



# EST-44

High Temperature  
Low Temperature  
44" Conveyor Dishwasher

Water Consumption  
**Only .49 Gallons**  
Per Rack of Dishes  
Meets **ENERGY STAR**

OPTIONAL VENT  
HOODS



Model shown as Left to Right.  
Also available as Right to Left.

## FEATURES:

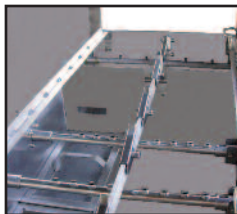
- **Energy Star approved.**
- Automatic water control system.
- 243 racks / 970 covers per hour.
- Economical to operate. Uses only .49 gallons of water per rack of dishes.
- Single control switch activation.
- Power rinse heater system.
- Unique 3-stage washing process provides wash, power rinse and final rinse all in a 44" machine.
- Automatic soil purging system filters wash water and traps plate debris into an external tray. Tray can be easily removed for cleaning.
- All stainless steel construction offers durable performance and years of trouble-free operation.
- Chemical resistant industrial heaters are proven to be more durable than commercial grade heaters.
- Large 19" opening accommodates larger items and utensils.
- Auto start/stop makes operation more energy efficient.
- Easy to remove and replace curtains for cleaning.
- Includes table limit switch and rack saver clutch system that protects the machine, dishracks and table from damage.
- Stainless steel chemical injection chamber.

## Available Options

- Corner Feed Table  
**(FACTORY INSTALLED RECOMMENDED)**
- Vent Hood with 4" x 16" Vent and Damper Control (2 per set)
- Alternative electrical options
- Hatco Booster Heater available
- Stainless Steel dishtables
- Drain Water Tempering Kit
- "E Temp" CMA booster heater (40° rise)
- Single Drain Connection Kit



New energy efficient  
oil-free drive system.



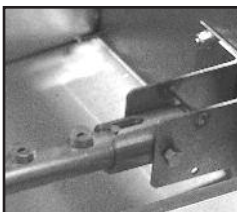
Strategically located  
spray arms with spray  
pattern positioned  
for additional wash  
coverage.



Large 19" opening  
accommodates larger  
items and utensils.



Shown with optional  
cornerfeed table.  
Available right or left.



Easy to remove wash  
arms with captive end  
caps. **Never lose  
another end cap again!**



New user friendly single  
action control switch  
with easy access and  
easy to clean around  
control box.

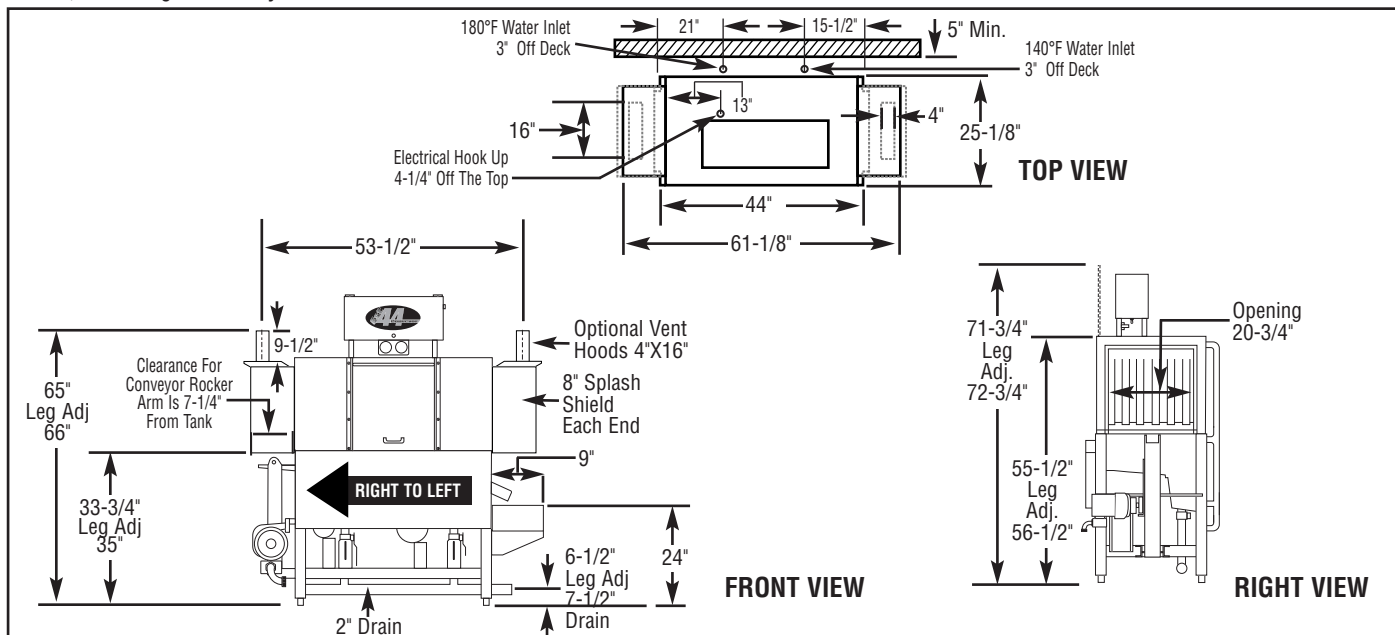




# EST-44

High Temperature  
Low Temperature  
44" Conveyor Dishwasher

**WARNING:** Plumbing connections must be made by a qualified service company who will comply with all (necessary) Federal, State, and Local Health, Plumbing and Safety codes.



## Specifications:

MODEL EST-44H/L	USA	METRIC		USA	METRIC
<b>OPERATING CAPACITY</b> RACKS PER HOUR (NSF RATED)	243	243	<b>DIMENSIONS</b>		
<b>CONVEYOR SPEED</b>	6.75 FT./MIN.	(206 CM/MIN.)	DEPTH	25-1/8"	(64cm)
<b>WASH PUMP MOTORS HP</b>	1	1	WIDTH	44"	(111.7cm)
<b>RINSE PUMP MOTOR HP</b>	1/3	1/3	HEIGHT	55-1/2"-56-1/2"	(140.97-143.51cm)
<b>CONVEYOR MOTOR HP</b>	1/3	1/3	STANDARD TABLE HEIGHT	34"	(86cm)
<b>WATER INLET - FILL</b>	1/2"	(1.27cm)	MAX HEIGHT CLEARANCE	19"	(48cm)
<b>WATER INLET - FINAL RINSE</b>	1/2"	(1.27cm)	<b>STANDARD DISHRACK</b>	1	1
<b>DRAIN SIZE</b>	2"	(5.1cm)	DIMENSIONS	19-3/4"X19-3/4"	(50X50cm)
<b>FINAL RINSE PRESSURE</b>	20 ± 5psi	(1.41 kg/cm²)	<b>ELECTRICAL RATING</b>	<b>VOLTS</b>	<b>PHASE</b>
<b>WASH TANK CAPACITY</b>					<b>AMPS</b>
PRE-RINSE	4.25 GAL	(16.0 L)		208	1
WASH	11.75 GAL	(44.5 L)		240	1
TOTAL	16.0 GAL	(60.5 L)		208	3
<b>WASH PUMP CAPACITY</b>				240	3
EACH	52 GPM	(197 LPM)		480	3
<b>OPERATING TEMPERATURE EST-44H</b>			<b>WASH TANK HEATER</b>	10kW	
WASH	150°F-160°F	(66°C/71°C)	<b>RINSE TANK HEATER</b>	3kW	
PUMPED RINSE	150°F-160°F	(66°C/71°C)	<b>SPECIFY DIRECTION OF RACK TRAVEL (RIGHT TO LEFT, LEFT TO RIGHT) WHEN ORDERING</b>		
FINAL RINSE	180°F-195°F	(82°C/90°C)			
<b>OPERATING TEMPERATURE EST-44L</b>			<b>SHIPPING WEIGHT</b>		
WASH RECOMMENDED	140°F-150°F	(60°C/68°C)	APPROXIMATE	662#	(300kg)
PUMPED RINSE RECOMMENDED	140°F-150°F	(60°C/68°C)			
FINAL RINSE RECOMMENDED	140°F-150°F	(60°C/68°C)			
<b>WATER CONSUMPTION</b>					
PER RACK (FINAL RINSE)	.49 GAL	(1.8 L)			
PER HOUR (FINAL RINSE)	119 GPH	(450 LPH)			

## Summary Specifications: Model EST-44 Conveyors

The Model EST-44H high temperature and EST-44L Chemical Sanitizing conveyor dishwashers meets ETL sanitation, UL, and CUL construction standards. The EST-44 performs three separate washing functions including a built-in power rinse, all in a 44" space. The EST-44 washes up to 243 racks per hour and uses a minimum .49 gallons of water per rack while achieving sparkling, clean, dry dishes. Constructed entirely of stainless steel.

### Available Models

- EST-44H R/L Right to Left
- EST-44H L/R Left to Right
- EST-44L R/L Right to Left
- EST-44L L/R Left to Right

