

# Owner's Manual

Keep with machine for reference

## MODEL GLC PARTS MANUAL REV.1.02A

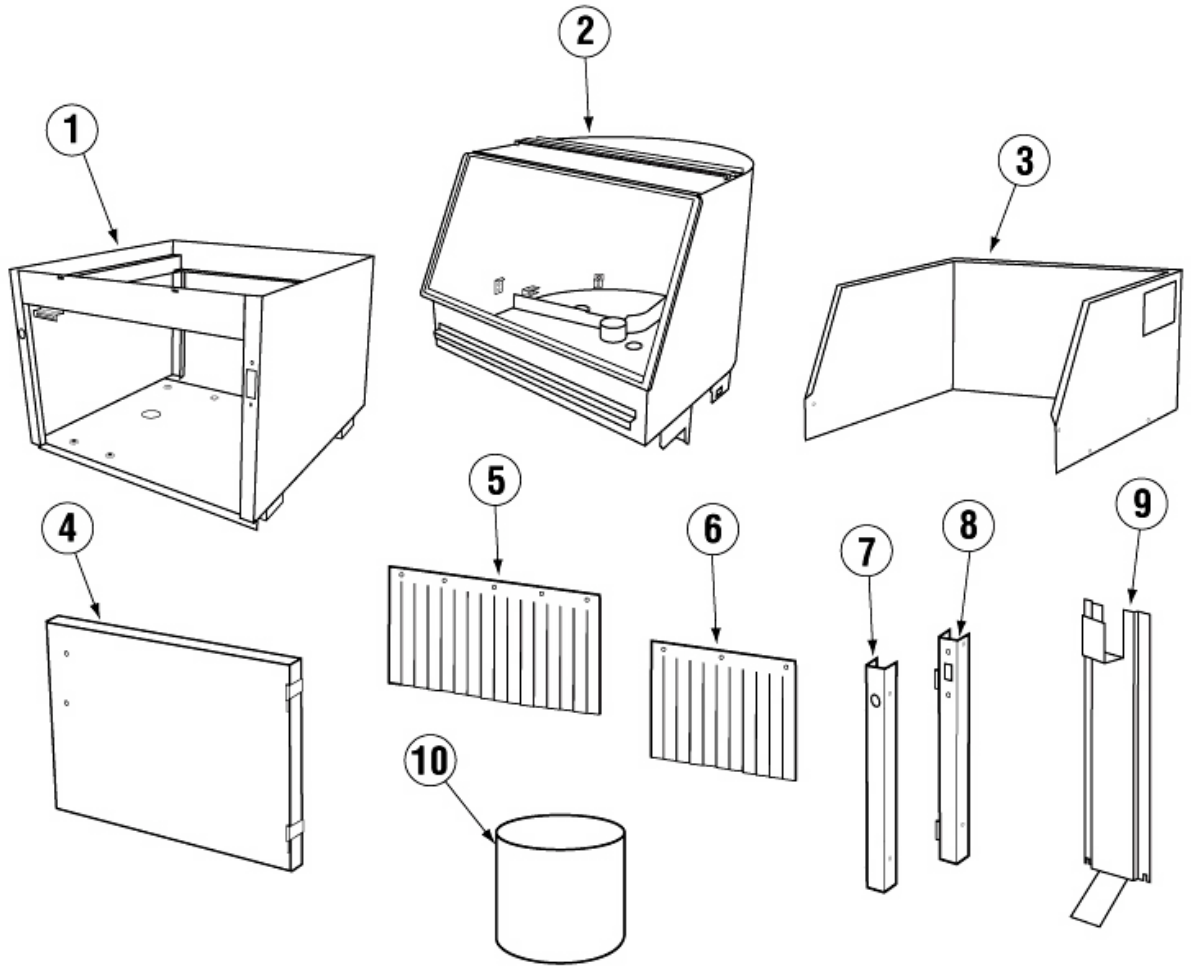


**CMA DISHMACHINES**  
**12700 KNOTT AVENUE**  
**GARDEN GROVE, CALIFORNIA 92841**  
**800-854-6417**  
**FAX 714-895-2141**

# TABLE OF CONTENTS

## MODEL GL-C

<b>1. PARTS MANUAL .....</b>	<b>4</b>
1.1. INITIAL PARTS KIT P/N 1100.47 .....	4
1.2. EXPLODED VIEW DRAWINGS.....	5
6.2.1. Main Assembly.....	5
6.2.2. Conveyor Wheel / Curtain .....	6
6.2.3. Conveyor Shut-Off Rod Assembly.....	7
6.2.4. Control Box Assembly .....	8
6.2.5. Soap Tank Assembly .....	9
6.2.6. Water Inlet Plumbing.....	10
6.2.7. Sanitizer Plumbing Component Hardware.....	11
6.2.8. Vacuum Breaker and Hardware.....	12
6.2.9. GL-C Wash Pump Assembly.....	13
6.2.10 Conveyor Drive Assembly.....	14
6.2.11 GL-C Waste Collector Assy. P/N 16565.00.....	14
6.2.12 Unique Parts for GLC Tall (Effective 06/27/07) .....	16



## 1. Parts Manual

### 1.1. Initial Parts Kit p/n 1100.47

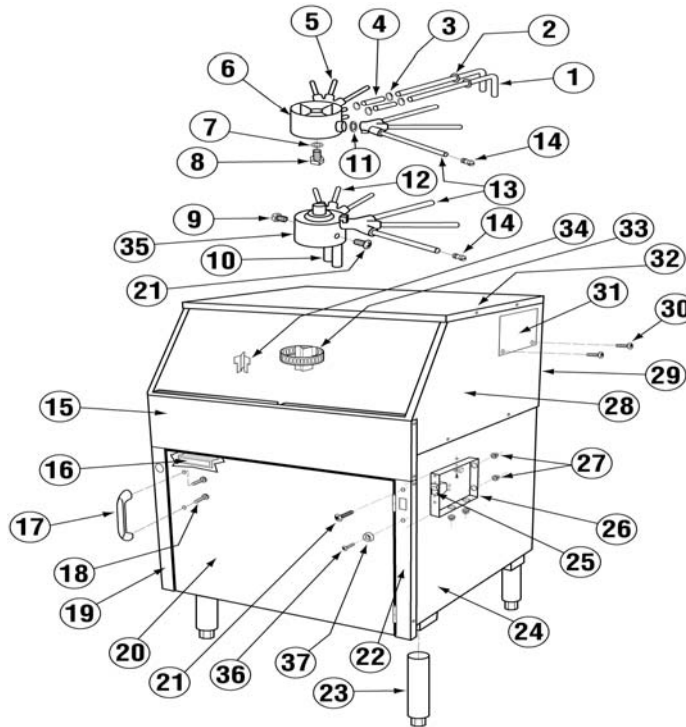
P/N	DESCRIPTION	Qty
*00120.00	Thermometer (Bi Metal)	1
00201.47	Wash Pump	1
00308.47	Spray Arm End Plug	3
00421.47	Conveyor Rocker Switch	1
00472.47	GL-C Conveyor Shut Off Switch	1
00490.47	Wash Pump Capacitor	1
*00631.05	Ice Cube Relay 220V, 12A	1
00631.47	Ice Cube Relay 220V, 20A	1
00715.47	3/8" Check Valve	1
00810.47	GL-C Drive Motor 208-240V	1
00811.47	Drive Motor Spring	1
00815.00	GL-C Peri Pump Complete	1
00820.00	GL-C Peri Pump Circuit Board	1
00821.00	GL-C Transformer	1
00839.00	Squeeze Tube w/conn.	3
00899.01	Cleaning Drill	1
00899.02	Cleaning Brush	1
03470.47	Power on-off/ Flush Switch	1
*03475.00	Primer Switch - Push Button	1
*03623.00	1/2 Vac Breaker Repair Kit Watts	1
13415.47	GL-C 3kW Heater	1
*13417.89	Heater Thermostat (EGO)	1
13418.47	GL-C Auto-Fill Timer	1
*13605.00	Pressure Gauge	1
13703.47	GL-C Curtain – Full Size	1
13703.57	GL-C Curtain – Half Size	1
41015.70	Solenoid Valve 3/8" 220V	1

**NOTE: Important! CMA recommends that the initial parts kit be purchased immediately and kept on hand as a back up supply of critical parts in the event your machine should require emergency service.**

**All the parts included in this kit are unique to the GL-C glasswasher (except those with \*).**

## 1.2. Exploded View Drawings

### 6.2.1. Main Assembly

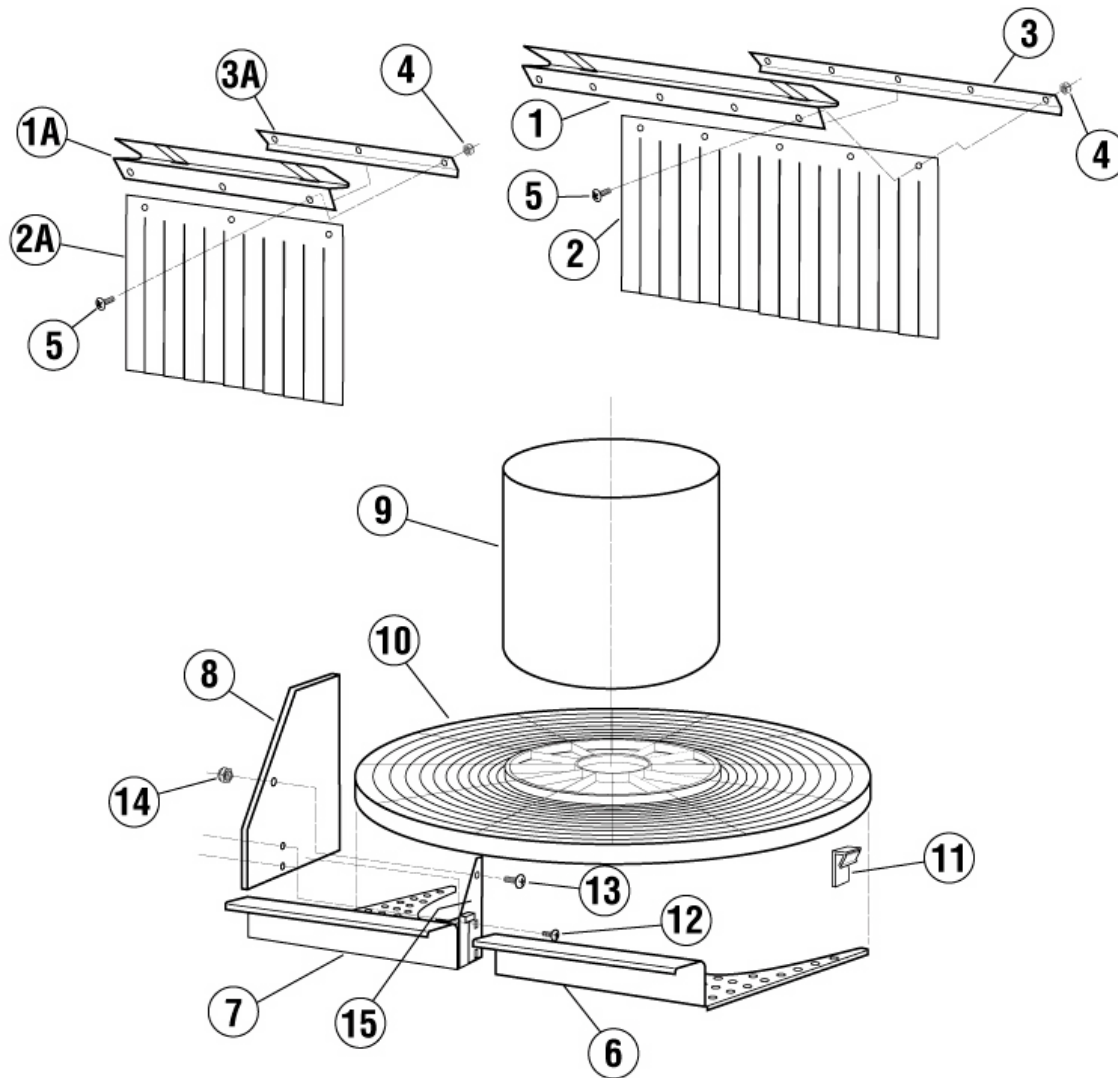


ITEM NO.	NO. REQ'D	P/N	DESCRIPTION
1	2	05004.00	Upper Spray Base Inlet Tube
2	2	14754.10	Grommet
3	4	03101.47	Clamp #6
4	1	03106.47	Braided Hose 3/8"
5	2	14755.00	Wash Arm
6	1	14752.00	Upper Spray Base
7	1	00924.00	Washer, 1/4"
8	1	00910.00	Bolt, 1/4-20 x 1 1/2"
9	4	00940.60	Screw, 10-32 x 3/8"
10	1	14756.00	Lower Spray Base Inlet Tube
11	4	14752.10	Spray Base "O" Ring
12	2	14755.00	Wash Arm
13	2	14754.00	Rinse Arm
14	6	00308.47	Spray Arm End Plug
15	1	16502.50	Face Trim
16	1	00812.47	Magnetic Door Catch
17	1	00535.30	Door Handle
18	2	00536.00	Screw, 10-24 x 3/8"
19	1	16502.65	Front Pillar (Left Hand)

\*Not shown.

ITEM NO.	NO. REQ'D	P/N	DESCRIPTION
20	1	16506.00	Door Assy.
21	2	00940.50	Screw, 10-32 x 3/8"
22	1	16502.60	Front Pillar (Right Hand)
23	4	01146.00	Leg 6-1/2"- Thread
24	1	16531.00	Base
25	1	00421.47	Conveyor Rocker Switch
26	1	16514.50	Conveyor Switch Box
27	4	00438.00	Snap Bushing Universal 875-11
28	1	16502.00	Side Panel Wrap
29	1	16530.00	Wash Tank
30	4	00940.60	Screw, 10-32 x 3/8"
31	1	16510.50	Vacuum Breaker Access Cover
32	1	16513.00	Top Panel
33	1	16571.20	Deflector Screen (Rinse)
34	1	16571.00	Drain Deflector (Wash)
35	1	14753.00	Lower Spray Base
36	1	00941.00	10-32 X 5/8 Panhead Screw
37	1	00421.45	GL-C Switch Bumper
38	1	16530.50	Tank Support Bracket *
39	1	00860.01	GL-C Moisture Pad 10 x 23 *
40	1	00860.02	GL-C Moisture Pad 3 x 23 *
41	1	00860.03	GL-C Moisture Pad 10 x 12 *

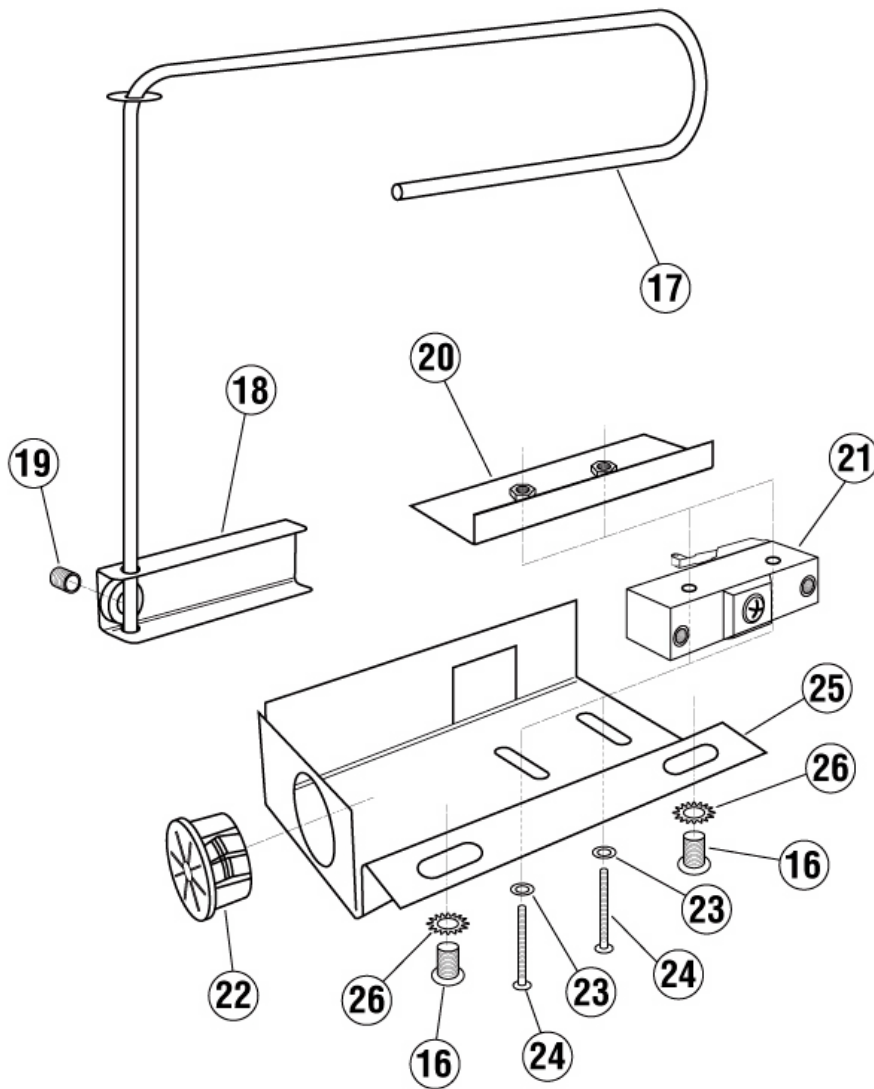
## 6.2.2. Conveyor Wheel / Curtain



ITEM NO.	NO. REQ'D	P/N	DESCRIPTION
1	1	16505.00	Curtain Support
1A	1	16505.30	Curtain Support-Small
2	1	13703.47	GL-C Curtain
2A	1	13703.57	GL-C Half Curtain
3	1	16505.10	Curtain Clamp
3A	1	16505.40	Curtain Clamp-Small
4	8	00927.00	Nut, 8-32
5	8	00911.50	Screw, 8-32 x 3/8"
6	1	16550.00	Tray- Right

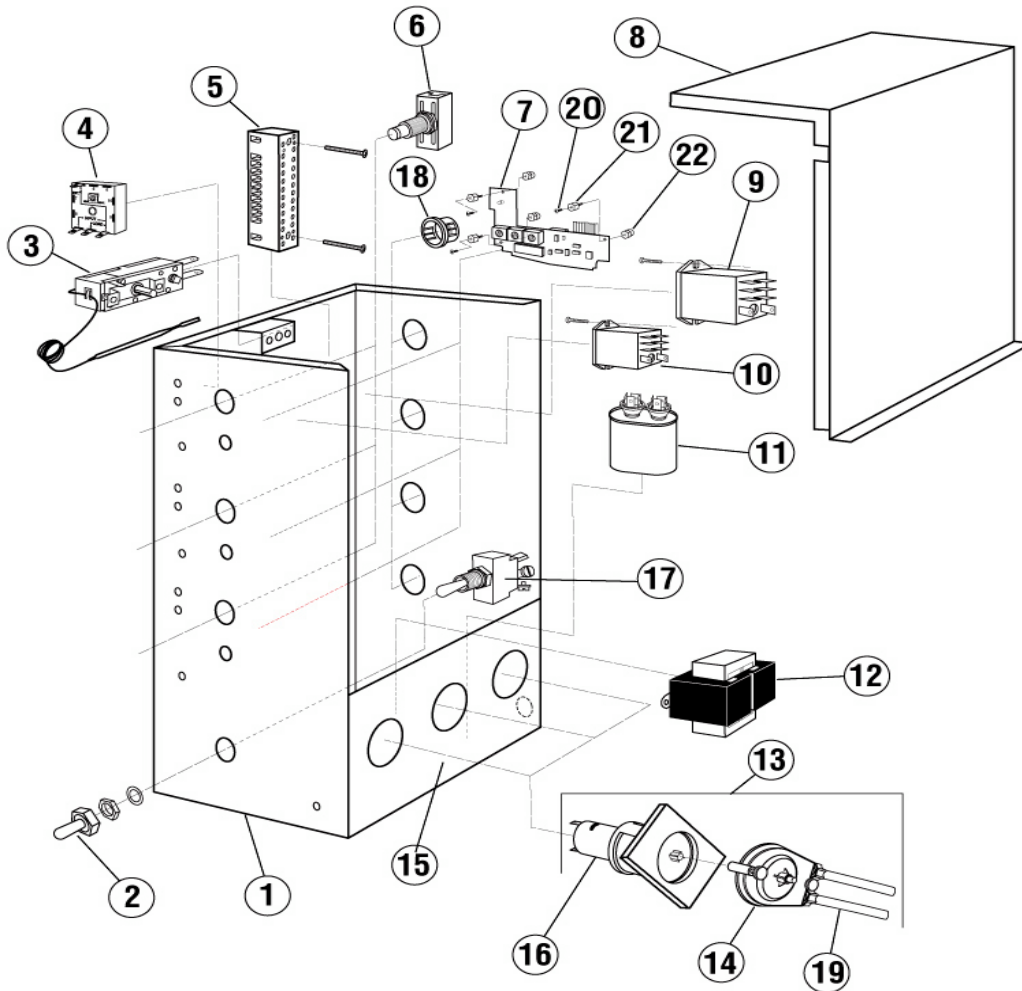
ITEM NO.	NO. REQ'D	P/N	DESCRIPTION
7	1	16550.50	Tray- Left
8	1	00825.00	Plexiglass Divider
9	1	16551.00	Conveyor Hub
10	1	14750.00	Conveyor Turntable
11	4	14750.10	Turntable Glide Block
12	2	00940.60	Screw, 10-32 x 3/8"
13	1	00905.00	1/4-20 X 1/2 Trusshead Bolt
14	1	00912.00	1/4-20 Nylon Lock Nut
15	1	00825.10	Plexi Glass Divider Bracket

## 6.2.3. Conveyor Shut-Off Rod Assembly



16	2	00940.50	Truss Head Screw 10-32 x 3/8"
17	1	16520.00	Conveyor Shut-off Rod
18	1	16521.00	Activator
19	1	00935.00	Socket Set Screw, 1/4-20 x 1/4"
20	1	16514.30	Nut Plate
21	1	00472.47	Conveyor Shut Off Switch
22	1	00438.00	Snap Bushing Universal 875-11
23	2	04806.00	#10 Brass Washer
24	2	01001.00	Pan Head Screw 6-32 x 1"
25	1	16514.00	Conveyor Shut Off Switch Brack.
26	2	03814.10	10-32 Lock Star Washer

## 6.2.4. Control Box Assembly



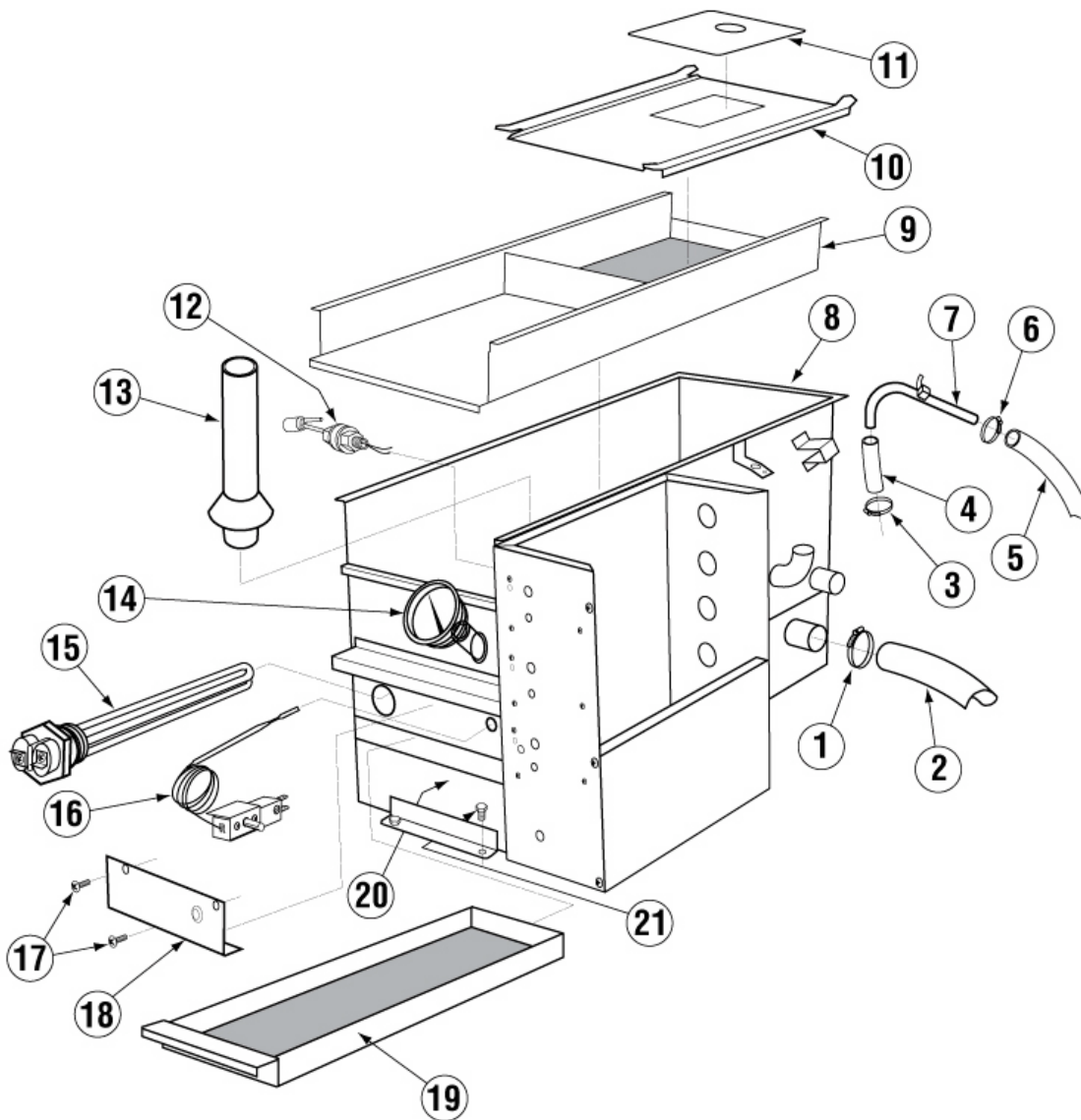
ITEM NO.	NO. REQ'D	P/N	DESCRIPTION
1	1	16503.00	GL-C Control Box
2	1	00470.10	Toggle Switch Rubber Boot
3	3	13417.89	Heater Thermostat (EGO)
4	1	13418.47	Auto- Fill Timer
5	1	15520.00	Power Block 12 Position
6	3	03475.00	Primer Switch - Push Button
7	3	00820.00	GL-C Peri Pump Circuit Board
8	1	16504.00	GL-C Control Box Lid
9	1	00631.47	Ice Cube Relay 220V, 20A
10	2	00631.05	Ice Cube Relay 220V, 12A
11	1	00490.47	Wash Pump Capacitor
12	1	00821.00	GL-C Transformer
13	1	00815.00	GL-C Peri Pump Complete

ITEM NO.	NO. REQ'D	P/N	DESCRIPTION
14	1	00818.00	GL-C Peri Pump Cover
15	1	16515.00	GL-C Peri Pump Panel
16	1	00816.00	GL-C Peri Pump Gear Motor
17	1	03470.47	Power on-off/ Flush Switch
18	4	00438.00	Snap Bushing Universal 875-11
19	3	00839.00	GLC Squeeze Tube w/ conn.
20	3	03826.47	4-40x3/16 Pan Head Screw
21	3	00820.06	Circuit Board Stand off
22	3	00820.07	Circuit Board Stand off Cap
23	9	00820.10	Circuit Board Spacer Large *
24	3	00820.20	Circuit Board Connector *
25	9	00821.11	Circuit Board Spacer Small *

\*Not shown



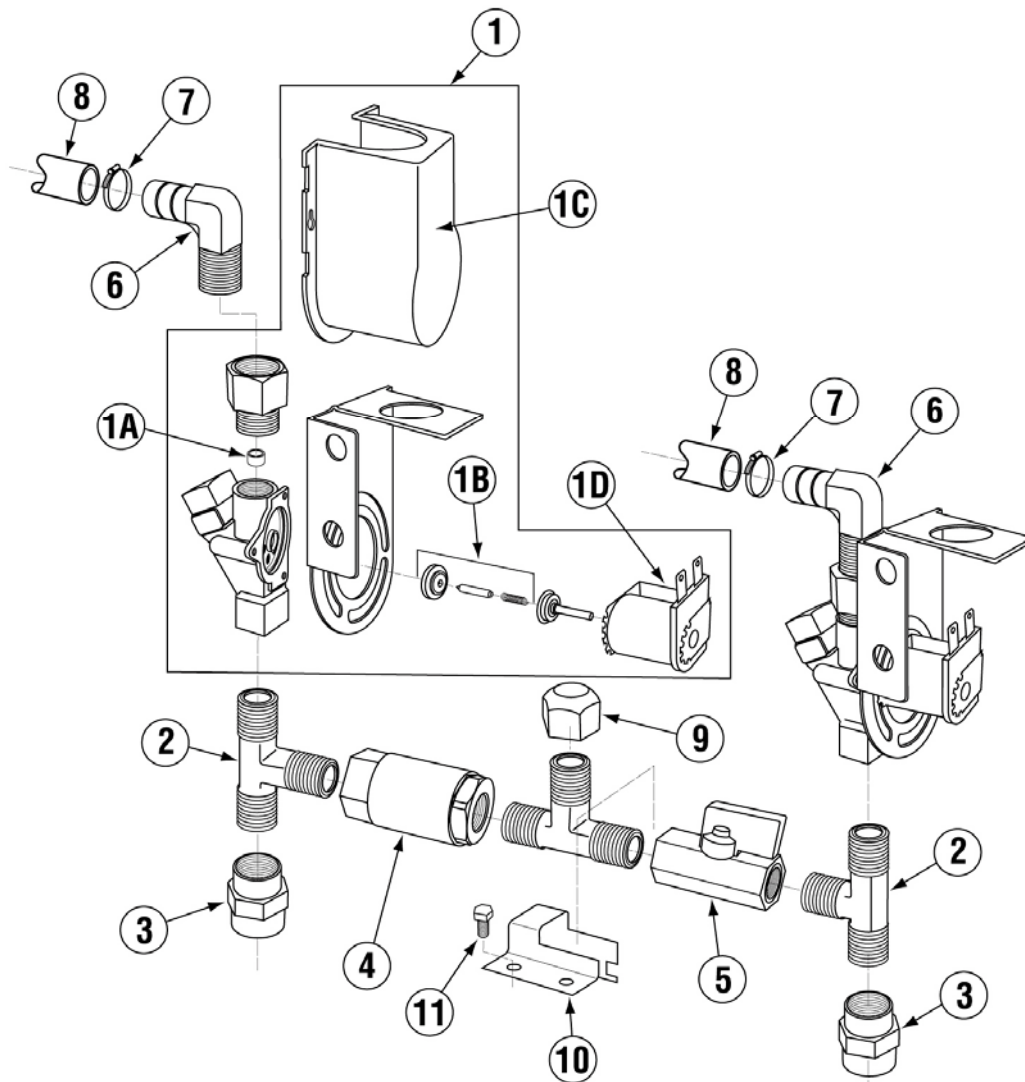
## 6.2.5. Soap Tank Assembly



ITEM NO.	NO. REQ'D	P/N	DESCRIPTION
1	1	03101.49	Hose Clamp #24
2	1	03106.40	Ribbed Drain Hose 1 1/2" ID
3	1	03101.00	Hose Clamp # 16 1"
4	1	03108.60	Transfer Hose 1" Reinforced
5	1	03106.45	Braided Hose 1/2"
6	1	03101.47	Hose Clamp #6
7	1	05012.00	1/2 Cu Ref Tubing (Per Foot)
8	1	16541.00	Soap tank
9	1	16544.00	Soap tank Screen
10	1	16543.00	Soap tank Rear Cover
11	1	16542.00	Soap tank Cover

ITEM NO.	NO. REQ'D	P/N	DESCRIPTION
12	1	13463.00	Liquid Level Switch
13	1	16545.50	Overflow Drain Tube
14	1	00120.00	Thermometer Bi Metal
15	1	13415.47	3KW Screw Plug Heater
16	1	13417.89	Heater Thermostat (EGO)
17	2	00940.50	10-32 X 3/8" Truss Head Screw
18	1	16522.00	Access Cover
19	1	16579.20	Drain Screen
20	1	16579.00	Drain Pan
21	2	00906.00	1/4-20 X 1/2" Hexhead Bolt
22	1	40116.00	1/4 Comp X 1/4 MIP Ftg (not shown)

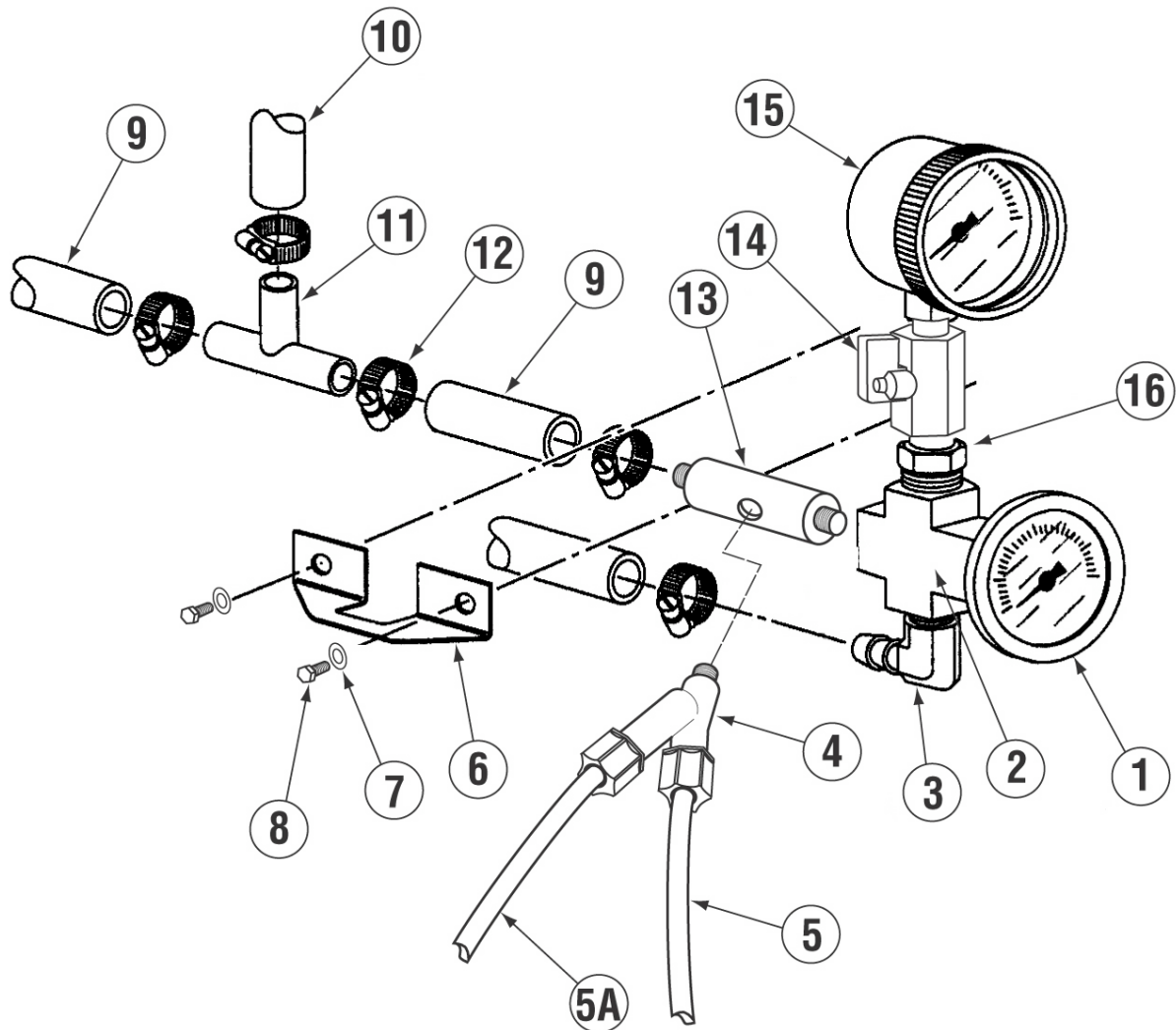
## 6.2.6. Water Inlet Plumbing



ITEM NO.	NO. REQ'D	P/N	DESCRIPTION
1	2	41015.70	Solenoid Valve 3/8" 220V
1A	2	41015.77	Flow Washer
1B	2	N/A	3/8" Solenoid Valve Repair Kit
1C	2	N/A	3/8" Solenoid Valve Cover
1D	2	41015.75	3/8" Solenoid Valve Coil
2	3	40010.00	GL-C 3/8" MPT Tee
3	2	40017.00	GL-C 1/2 x 3/8" FPT Reducer
4	1	00715.47	GL-C 3/8" Check Valve

ITEM NO.	NO. REQ'D	P/N	DESCRIPTION
5	1	41014.49	GL-C 3/8" Ball Valve
6	2	40012.10	GL-C 1/2 Barb x 3/8" MIP Elbow
7	2	03101.47	Hose Clamp #6
8	1	03106.45	Braided Hose 1/2"
9	1	40016.00	Brass Cap
10	1	16525.00	Inlet Plumbing Clamp
11	2	00914.10	1/4-20 x 5/8" Hexhead Bolt

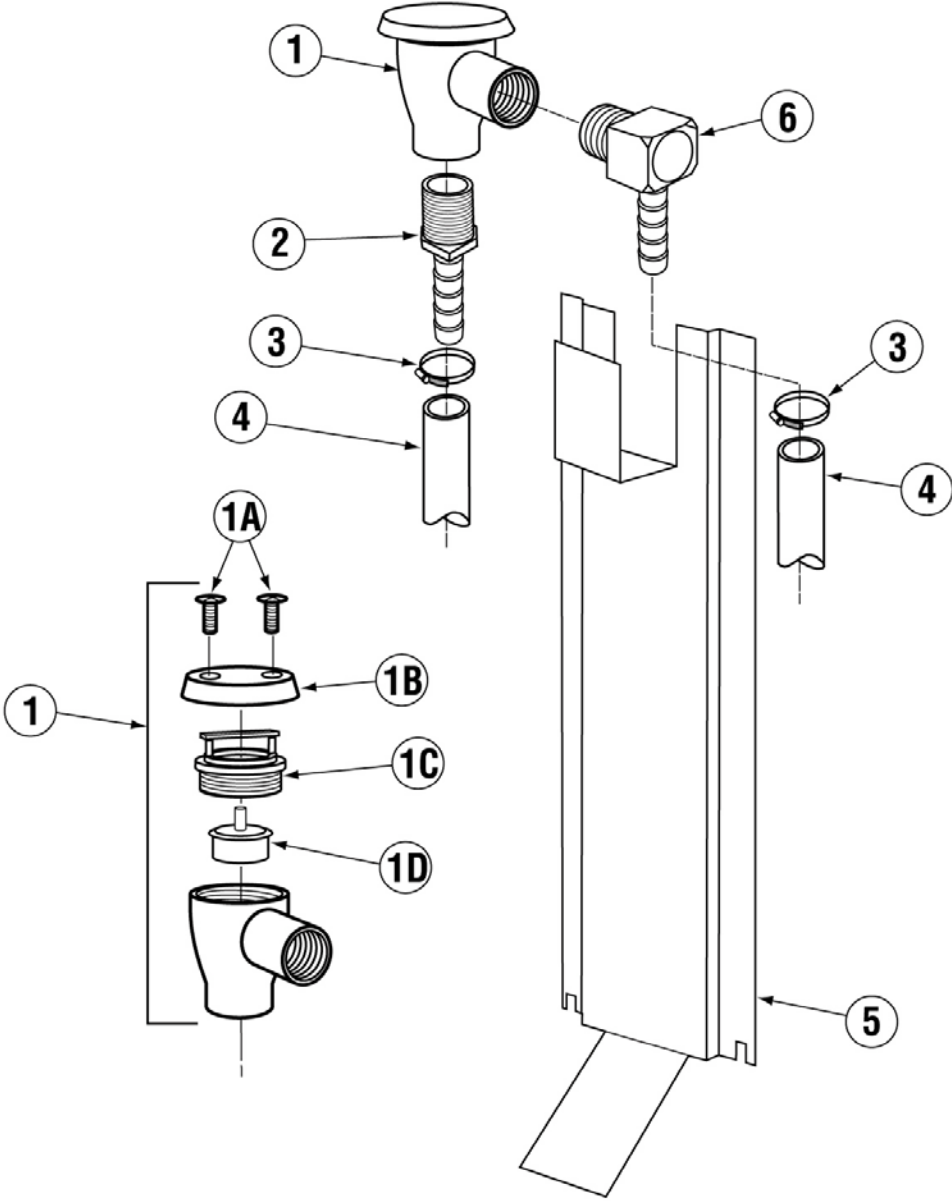
## 6.2.7. Sanitizer Plumbing Component Hardware



ITEM NO.	NO. REQ'D	P/N	DESCRIPTION
1	1	00120.00	Thermometer
2	2	40011.00	3/8" FPT Cross Connector
3	1	40012.00	3/8" MPT x 1/2" 90° Hose Barb
4	1	00826.00	Dual Inlet Chemical Injector
5	1	00425.51	Chemical Tubing Blue
5A	1	00425.54	Chemical Tubing White
6	1	16526.00	Gauge Bracket
7	2	00924.00	Lock Washer, 1/4
8	2	00912.00	Nut, 1/4-20

ITEM NO.	NO. REQ'D	P/N	DESCRIPTION
9	1	03106.45	1/2" I.D. Braided Hose
10	1	03106.47	3/8" I.D. Braided Hose
11	1	00434.49	1/2 x 1/2 x 3/8" Tee
12	5	03101.47	7/16" Gear Clamp
13	1	13699.47	Mixing Chamber
14	1	41014.47	1/4"MxF Mini Ball Valve
15	1	13605.00	0-30 PSI Pressure Gauge
16	1	40015.00	3/8 x 1/4" Reducer Bushing

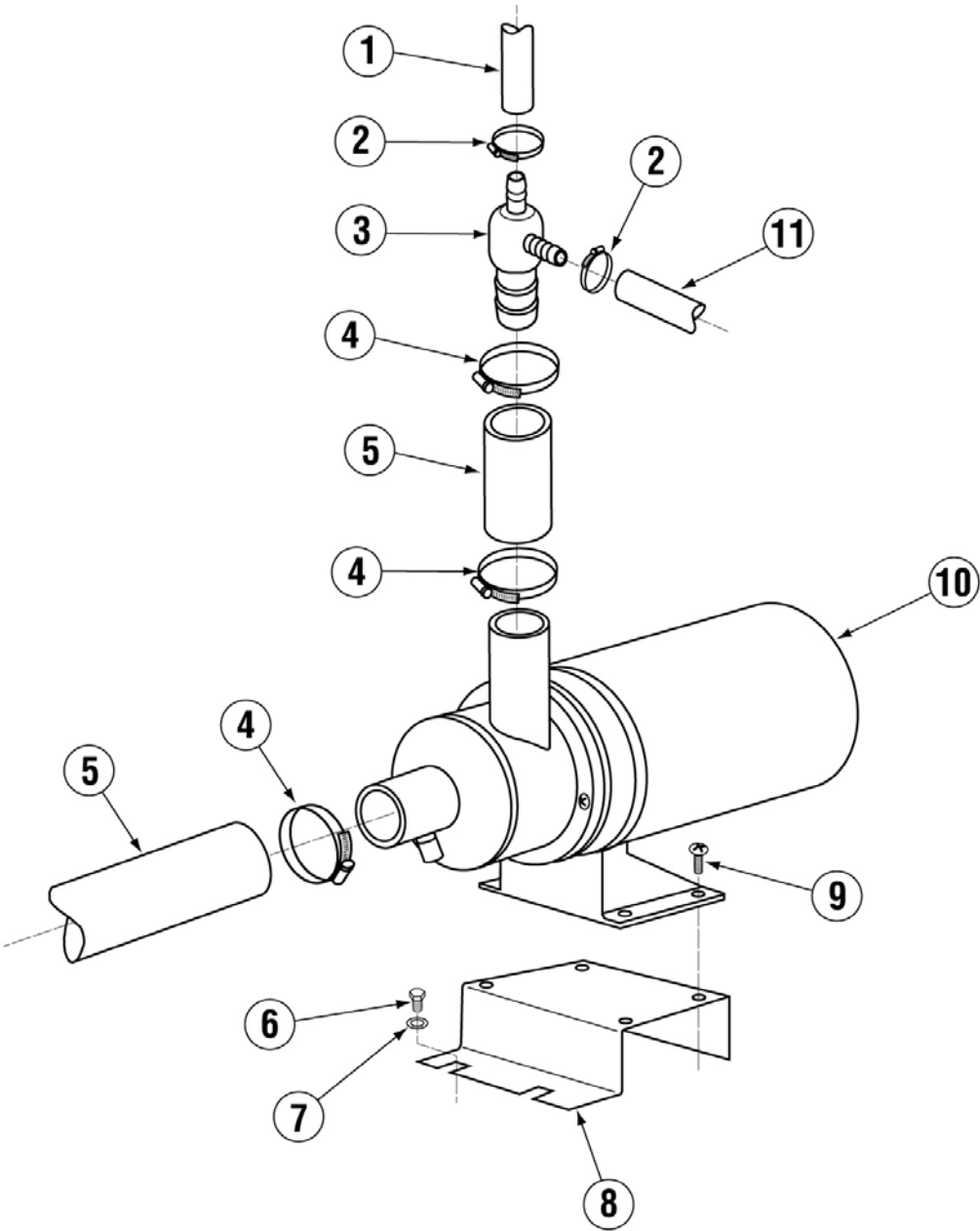
## 6.2.8. Vacuum Breaker and Hardware



ITEM NO.	NO. REQ'D	P/N	DESCRIPTION
1	1	03624.00	1/2" Vacuum Breaker
1A	2	00421.51	6-32 x 1/4" SS Panhead Screw
1B	1	00739.50	Vacuum Breaker Cap
1C	1	03624.25	1/2" Vacuum Breaker Bonnet
1D	1	03623.00	1/2" Vacuum Breaker Repair Kit

ITEM NO.	NO. REQ'D	P/N	DESCRIPTION
2	1	40014.00	1/2" MPT x 1/2" Hose Barb
3	2	03101.47	7/16" Clamp
4	1	03106.45	1/2" I.D. Braided Hose
5	1	16510.00	Vacuum Breaker Plumb Support
6	1	40013.00	GL-C 1/2 Barb x 1/2 MPT 90deg

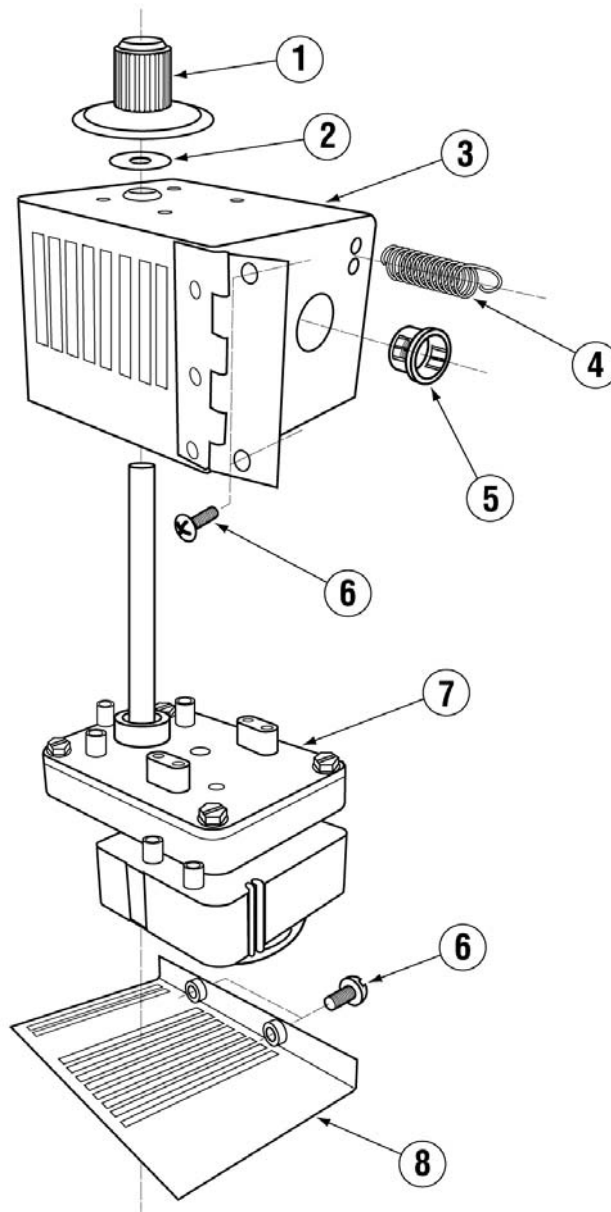
## 6.2.9. GL-C Wash Pump Assembly



ITEM NO.	NO. REQ'D	P/N	DESCRIPTION
1	1	03106.45	1/2" Braided Hose
2	2	03101.47	Hose Clamp #6
3	1	00434.47	Pump Hose Adapter
4	1	03101.00	Hose Clamp #16
5	1	03108.60	Transfer Hose 1" Reinforced
6	2	00914.10	1/4-20 X 5/8 Hexhead Bolt

ITEM NO.	NO. REQ'D	P/N	DESCRIPTION
7	1	00924.50	1/4" SS Washer x 3/4" OD
8	1	16570.75	Wash Pump Platform
9	4	00911.50	8-32 X 3/8 Pan Head Screw
10	1	00201.47	Wash Pump
11	1	03106.47	3/8" Braided Hose

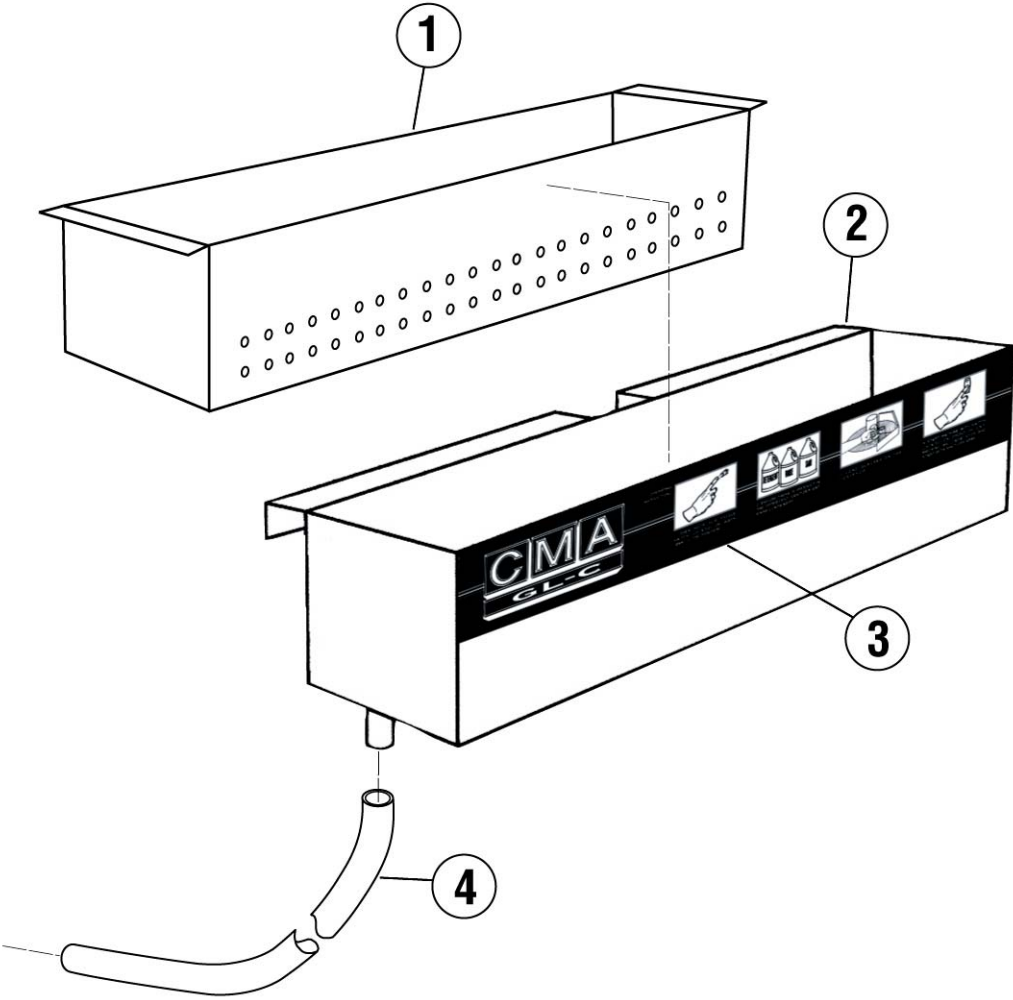
## 6.2.10 Conveyor Drive Assembly



## 6.2.11 GL-C Waste Collector Assy. P/N 16565.00

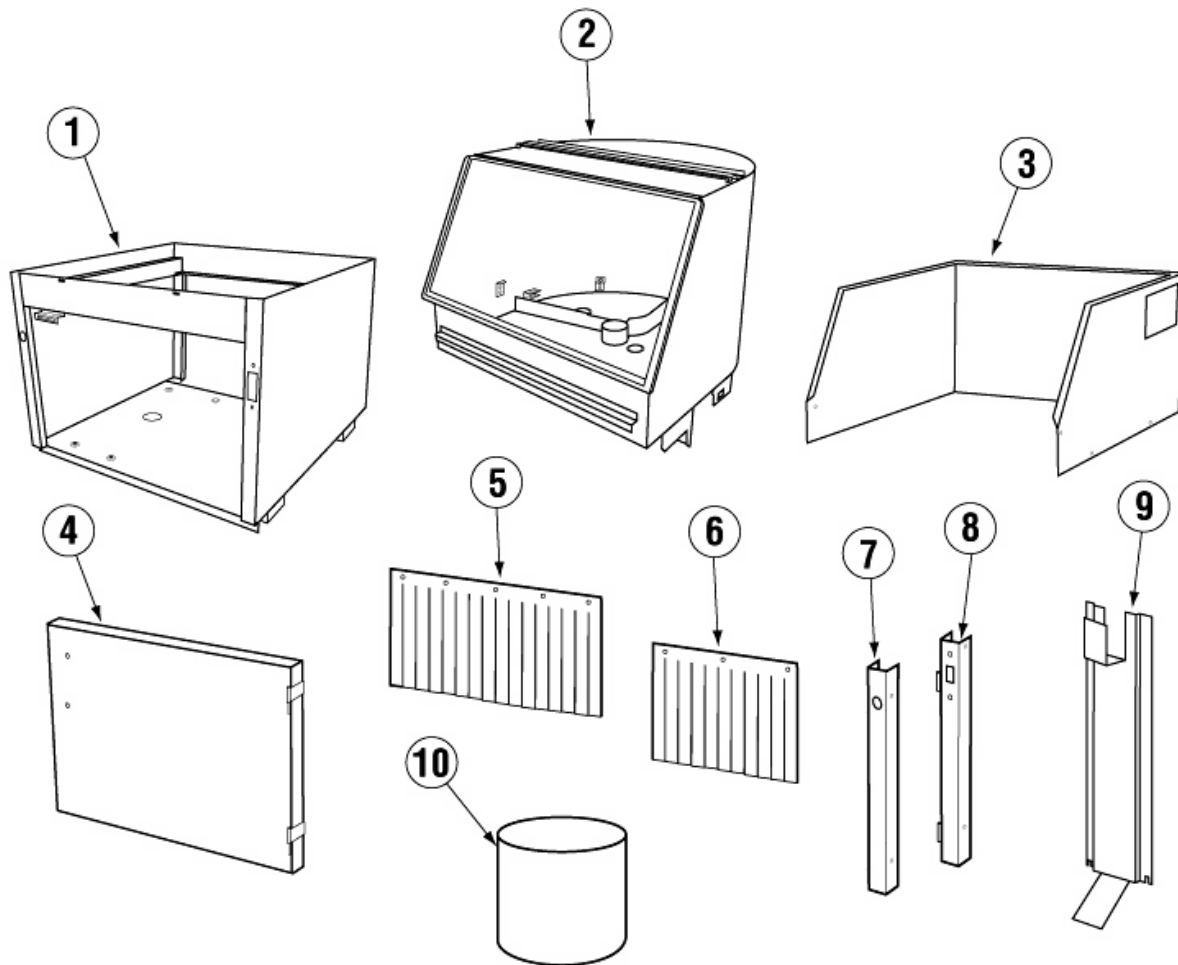
ITEM NO.	NO. REQ'D	P/N	DESCRIPTION
1	1	14751.00	Drive Gear
2	1	00104.83	VA Drain Motor Shaft Gasket
3	1	16570.50	Drive Motor Housing
4	1	00811.47	Extension Spring

ITEM NO.	NO. REQ'D	P/N	DESCRIPTION
5	1	00438.00	Snap Bushing Universal 875-11
6	4	00940.50	Screw, 10-32 x 3/8"
7	1	00810.47	Drive Motor
8	1	16570.60	Drive Motor Housing Cover



ITEM NO.	NO. REQ'D	P/N	DESCRIPTION
1	1	16562.00	GL-C Waste Collector Screen
2	1	16560.00	GL-C Waste Collector Tray
3	1	06231.47	GL-C Label
4	1	03106.51	Clear Vinyl Tubing 1/2" ID x 3/4"OD
5	1	00899.01	Cleaning Drill not shown
6	1	00899.02	Cleaning Brush not shown

## 6.2.12 Unique Parts for GLC Tall (Effective 06/27/07)



ITEM NO.	NO. REQ'D	P/N	DESCRIPTION
1	1	16431.00	Base Assy 2" taller
2	1	16430.00	Wash Tank Assy 2" taller
3	1	16402.00	Side Panel Wrap 2" taller
4	1	16406.00	Door Assy. 2" taller
5	1	13703.43	Curtain 2" longer

ITEM NO.	NO. REQ'D	P/N	DESCRIPTION
6	1	13703.53	Half Curtain 2" longer
7	1	16402.65	Front Pillar (Left Hand) 2" taller
8	1	16402.60	Front Pillar (Right Hand) 2" taller
9	1	16410.00	Vacuum Breaker Support 2" taller
10	1	16451.00	Conveyor Hub 2" taller