



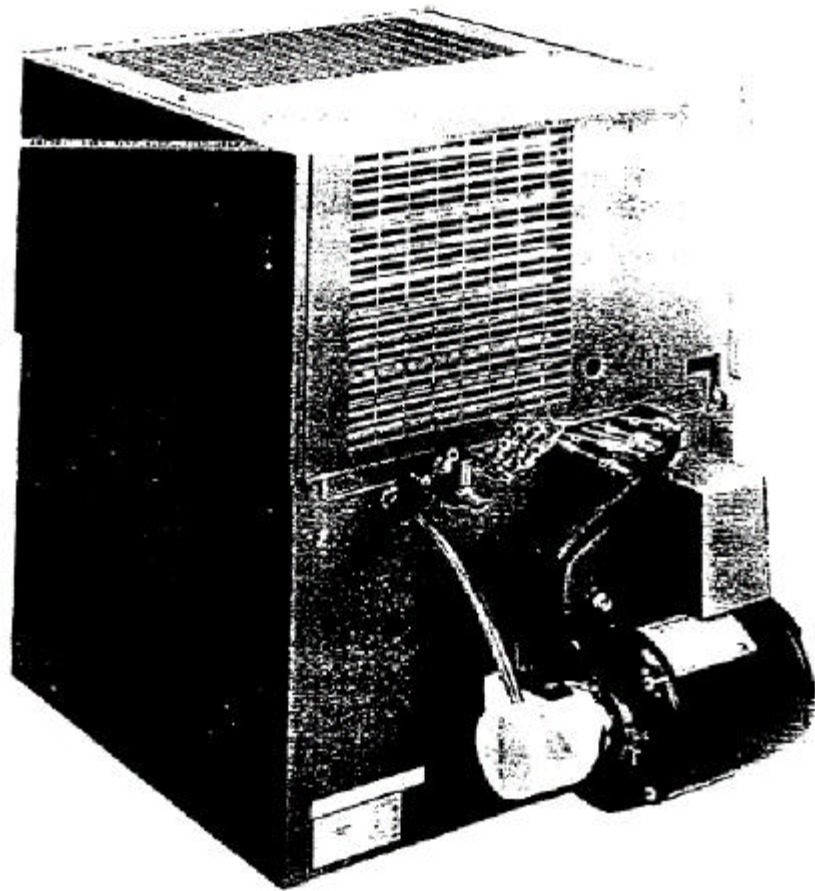
IMI CORNELIUS INC.
One Cornelius Place
Anoka, MN. 55303-6234
Telephone 1-800-238-3600
Facsimile 1-800-258-0255

www.cornelius.com

ILLUSTRATED PARTS LIST

UCC-40 POST-MIX DISPENSER

MODEL NO.





IMI CORNELIUS INC.
One Cornelius Place
Anoka, MN. 55303-6234
Telephone 1-800-238-3600
Facsimile 1-800-258-0255

www.cornelius.com

ILLUSTRATED PARTS LIST

UCC-40 POST-MIX DISPENSER

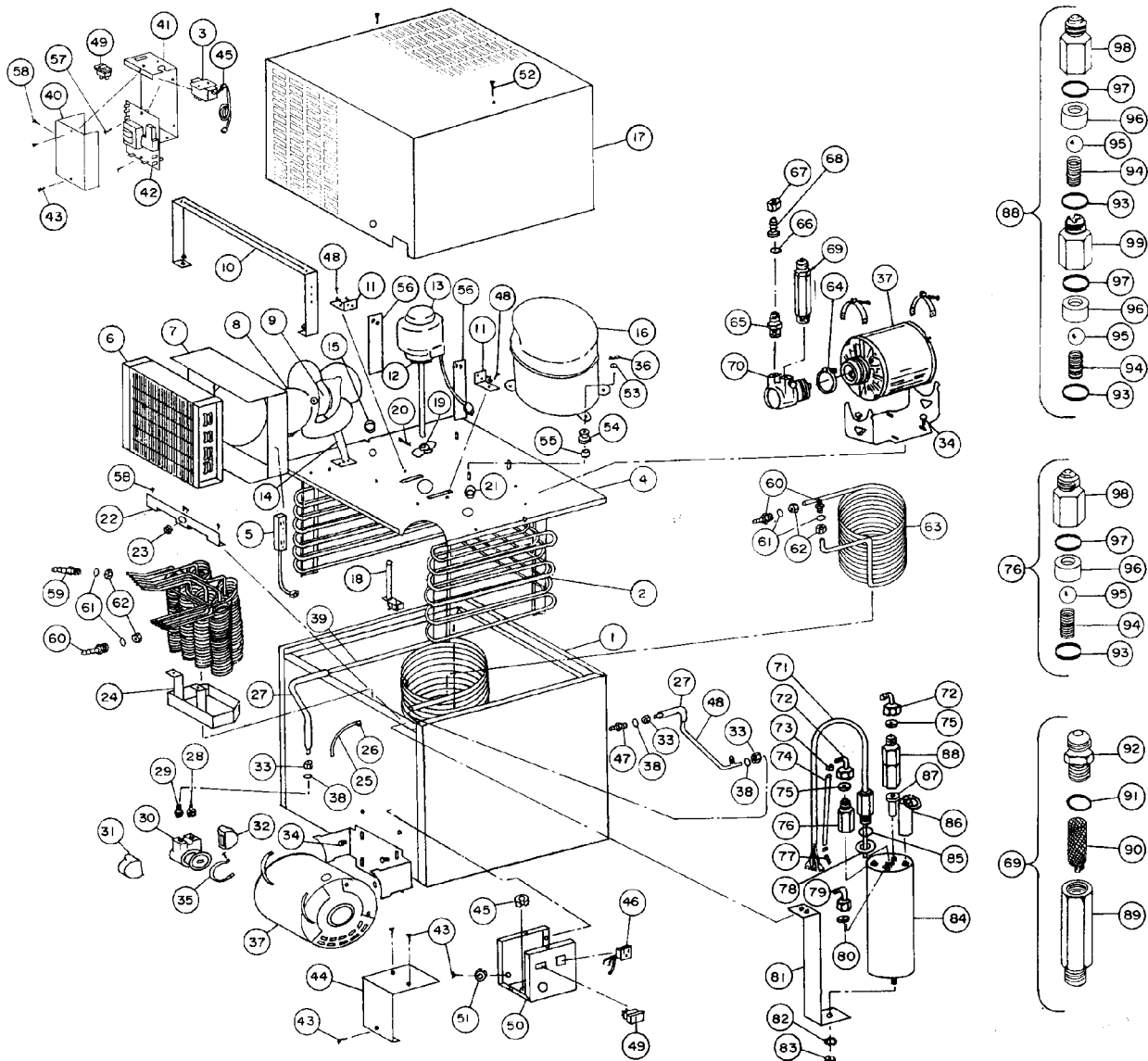


FIGURE 1. GENERAL ASSEMBLY



IMI CORNELIUS INC.
 One Cornelius Place
 Anoka, MN. 55303-6234
 Telephone 1-800-238-3600
 Facsimile 1-800-258-0255

www.cornelius.com

ILLUSTRATED PARTS LIST

UCC-40 POST-MIX DISPENSER

Item No.	Part No.	Name
1	260064	Cabinet Asy
2	260146	Evap Coil Asy
3	18607001	Control Ice Bank
4	230218	Platform Rfg
5	350128	Cord Pwr 120V 60HZ
	350124	Cord Pwr 230V 50HZ
6	550087	Cond Coil
7	230510	Shroud Fan
8	350015	Blade Fan
9	350094	Motor Fan 120V 60HZ
	350097	Motor Fan 230V 50/60HZ
10	230302	Handle Rfg Platform
11	230040	Brkt Mtr Agit
12	400411	Gasket
13	350078	Motor Agit 120V 60HZ
	350079	Motor Agit 230V 50/60HZ
14	230943	Brkt Mtr Fan
15	550031	Bushing Snap
16	260969	Kit Comp 1/3HP 120V 60HZ
	260967	Kit Comp 1/3HP 230V 50HZ
	260972	Comp 1/3HP 240V 60HZ
	350148	Relay 1/3HP 120V 60HZ
	350151	Relay 1/3HP 230V 50HZ
	350152	Relay 1/3HP 240V 60HZ
	350108	Overld 1/3HP 120V 60HZ
	350106	Overld 1/3HP 230V 50HZ
	350107	Overld 1/3HP 240V 60HZ
17	230877	Hood Asy Gray
18	260061	Holder Bulb Temperature Control
	230064	Brkt Bulb Holder
19	350012	Blade Agit
20	186610000	Pin Sprg
21	400262	Cap Plug
22	230130	Brkt Line

Item No.	Part No.	Name
23	320389000	Bushing Snap
24	230208	Brkt Product Coil
25	89053	Tube
26	300200000	Clamp
27	650047	Insulation Tubg
28	77081400	Fitg Adptr 3/8MPT x 3/8-Barb
29	400243	Fitg Pack 3/8-Tube x 3/8MPT
30	550275	Pump 50GPH
31	318129000	Insulation Pump
32		Item Not Used
33	400249	Nut, Pack, 3/8 (No Longer Available)
34		Item Not Used
35	187483000	Clamp
36	398034400	Pin Hitch
37	350072	Motor Pump 1/3HP 120V 60HZ
	350075	Motor Pump 1/3HP 230V 50/60HZ
38	31525012	O-Ring .301 I.D.
39	260136	Coil Asy Carb Water (No Longer Available)
40	230231	Cover Box Elec
41	230819	Wrapper, Electrical Box, 115V 60Hz (No Longer Available)
	230783	Box Elec
42	60439010	Control Liquid Level 120V 60HZ 7 Min Timer
	60439012	Control Liquid Level 230V 50HZ 7 Min Timer
	60439011	Control Liquid Level 120V 60HZ 3 Min Timer
	60439013	Control Liquid Level 230V 50HZ 3 Min Timer
43	400288	Screw MA 6-32 x 1/4 TAPR
44	230230	Cover Box Elec 120V 60HZ
45	550035	Bushing
46	350137	Receptacle Single 115V 60HZ
47	400238	Fitg Pack 1/4-Tube x 5/16-Barb (No Longer Available)



IMI CORNELIUS INC.
 One Cornelius Place
 Anoka, MN. 55303-6234
 Telephone 1-800-238-3600
 Facsimile 1-800-258-0255

www.cornelius.com

ILLUSTRATED PARTS LIST

UCC-40 POST-MIX DISPENSER

Item No.	Part No.	Name
48	260888	Tube Assy Recirc Carb Water
49	350182	Switch Rocker
50	230185	Box Elec 120V 60HZ
51	400424	Washer Terminal Cup
52	400282	Screw No. 10-32 x 5/8
53	20223010	Washer Ft .489 I.D.
54	189723000	Grommet Cmpr
55	350158	Sleeve Compressor
56	230303	Heat Sink
57	400284	Screw No. 6 x 5/8" PH B
58	400294	Screw DR No. 8-18 x 3/8" RDRP
59	400241	Fitg Compsn 1/4 x 3/8-Barb
60	77080101	Fitg Barb 1/4 x 7/16-20
61	31525002	O-Ring .176 I.D.
62	400244	Nut Pack 7/16-20
63	260345	Coil Wtr Asy Pre-Chill
64	20543	Clamp Pump
65	400046	Fitg Nipl 3/8MPT x 3/8F
66	311304000	Gasket 3/8 Male Flare
67	77030100	Nut Swiv 5/8-18
68	400153	Nipl Swiv 1/4-Barb (No Longer Available)
69	260431	Fitg Filter Asy
70	550276	Pump 125GPH
71	711200003	Kit Service Probe
72	77040100	Fitg L Swiv 1/4-Barb x 7/16-20
73	111353000	Clamp
74	174478000	Tube, Flexcor .265 I.D. (Sold by the Foot)

Item No.	Part No.	Name
75	178025100	Gasket 1/4 Male Flare
76	65259	Kit Valve Chk Sngl
77	77040200	Fitg Splicer .265 I.D. Tube
78	400412	Washer (No Longer Available)
79	77040900	Fitg L Swiv 5/8-18 x 3/8-Barb
80	311304000	Gasket 3/8 Male Flare
81	230070	Brkt Mntg Carb Tank (No Longer Available)
82	400422	Washer (No Longer Available)
83	400188	Nut 1/4 (No Longer Available)
84	550073	Carb, Tank Ass'y (No Longer Available)
85	31525007	O-Ring .488 I.D.
86	66008	Kit Relief Valve 180PSI
87	550040	Insert Carb Inlet Wtr (No Longer Available)
88	260037	Valve Chk Dual Back Water
89	550198	Fitg Filter Body 3/8NPT
90	550197	Screen Filter
91	31525017	O-Ring .426 I.D.
92	400130	Fitg Inlet, 3/8MF x 11/16-64
93	31525012	O-Ring .301 I.D.
94	64678	Spring
95	64560	Ball .312 Dia.
96	64686	Sleeve
97	398033002	O-Ring .239 I.D.
98	77401400	Fitg Chk Val 1/4MF x 9/16-27FM
99	77400200	Body Chk Valve Dual

Compressor Kits include Compressor, Relay, Overload, Grommets and Sleeves