

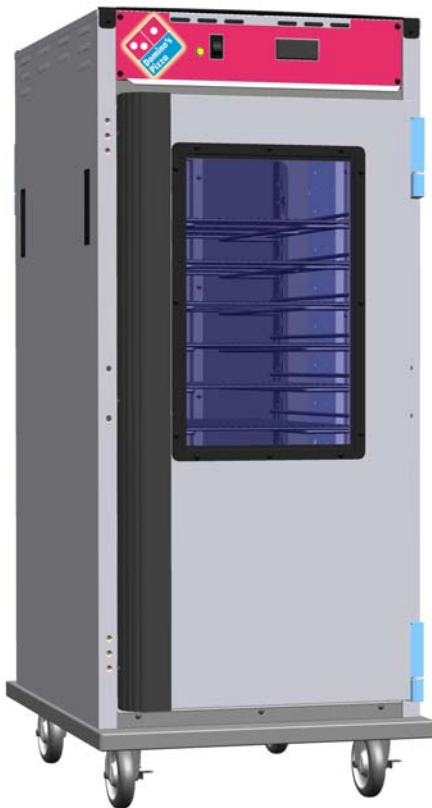


5925 Heisley Road • Mentor, OH 44060-1833  
 877/CRES COR (273-7267) • 440/350-1100  
 Fax: 440/350-7267 • www.crescor.com

Holding Cabinet	<b>FL-2331</b>
Rev. 4 (6/07)	Page 1 of 8

# OPERATING and MAINTENANCE INSTRUCTIONS

## Models: H138NPSCDOM Series Hot Cabinets



**H138NPSCDOM2**



**H138NPSCDOM3**

Cabinet model number: \_\_\_\_\_.

Cabinet serial number: \_\_\_\_\_.

Authorized Service Agency: \_\_\_\_\_.

Ph: \_\_\_\_\_ . Fax: \_\_\_\_\_.

Keep this manual for future reference.

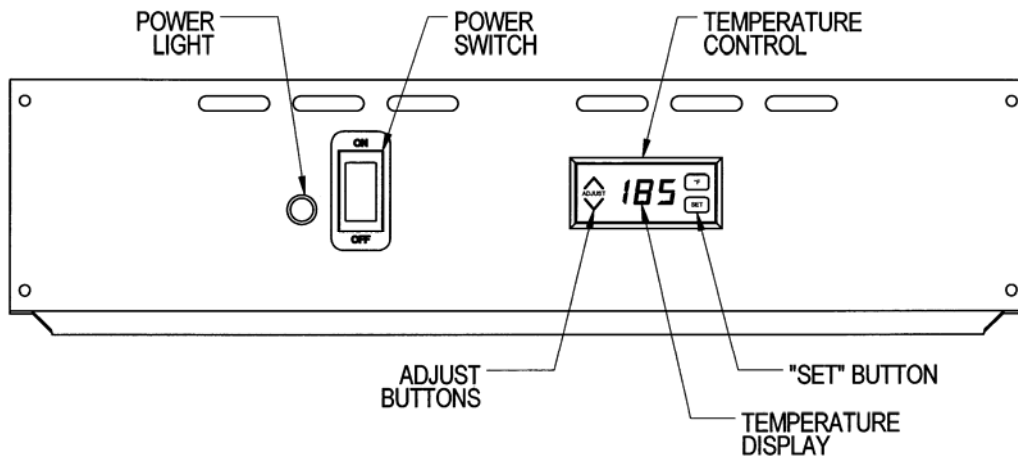
## OPERATING and MAINTENANCE INSTRUCTIONS

### Models: H138NPSCDOM Series Hot Cabinets

#### ELECTRICAL SPECIFICATIONS:

Model No.	Volts	Watts	Amps	Hertz	Phase	NEMA
H138NPSCDOM2	120	1400	11.7	60	1	5-15P
H138NPSCDOM3	120	2000	16.6	60	1	5-20P

**NOTE:** The above model numbers are basic models. They may be followed by letters: L, R, or ending with S.



#### INSTALLATION:

1. Remove all paper and packing material from inside of cabinet.
2. Remove protective paper and vinyl material from outside surfaces of cabinet.
3. Place the cabinet in a well-ventilated area.
4. Place cabinet on level floor.
5. Plug cord end into proper wall outlet.

#### FIRST TIME START-UP:

1. Push the POWER switch to "ON", and run the unit for one hour.

**NOTE: DO NOT PUT FOOD INTO CABINET!**  
 This step is to burn off manufacturing oils and excess adhesive.

**▲ WARNING** Air is VERY HOT when door is opened.

2. Let the cabinet cool and wipe inside clean with detergent and hot water before first use.

#### HOW TO HOLD:

1. Push POWER switch to "ON." Yellow POWER LIGHT will come on.
2. Push the "SET" button on the TEMPERATURE CONTROL. The TEMPERATURE DISPLAY will show "SP1" (setpoint 1).
3. Press "SET" again and the current setpoint temperature will be displayed.
4. Press the ▲▼ ADJUST buttons to adjust to the desired temperature.
5. Press "SET" to save the temperature setting.
6. Preheat cabinet for 45 minutes.
7. Put product into cabinet.

**NOTE:** Proper food holding temperature is 140°F/60°C or higher.

**▲ WARNING** Blower inlet guard must be in place before operating cabinet.

## OPERATING and MAINTENANCE INSTRUCTIONS

### Models: H138NPSCDOM Series Hot Cabinets

 **WARNING**

***BEFORE* cleaning the cabinet: Unplug cord from wall. Do NOT hose cabinet with water. Do NOT get water on controls. Do NOT use abrasives or harsh chemicals.**


**Cleaning hints:**

1. Wipe up spills as soon as possible.
2. Clean cabinet regularly to avoid heavy dirt build-up.
3. Make a test spot with cleaner.
4. Follow manufacturer's directions on cleaner.
5. Do not mix cleaners.
6. Avoid drips and splashes

**HOW TO CLEAN THE UNIT:**


	Soil	Cleaner	Method
<b>CABINET</b> Inside and Outside (Stainless Steel)	ROUTINE CLEANING	Soap, Ammonia, or mild *detergent and water.	1. Sponge on with cloth. 2. Rinse with water. 3. Wipe dry.
	STUBBORN SPOTS AND STAINS	Mild abrasive made for stainless steel.	1. Apply with damp sponge or cloth. 2. Rub lightly.
	BURNT-ON FOODS OR GREASE	Chemical oven cleaner for stainless steel.	Follow oven cleaner manufacturer's directions.
	HARD WATER SPOTS and SCALE	Vinegar	1. Swab or wipe with cloth. 2. Rinse and dry.

*\*Mild detergents include soaps and non-abrasive cleaners.*



**WARNING**

RISK OF FIRE OR ELECTRIC SHOCK  
DO NOT OPEN



WARNING: TO REDUCE THE RISK OF FIRE OR ELECTRIC SHOCK,

DO NOT REMOVE COVER (OR BACK)

NO USER-SERVICEABLE PARTS INSIDE

REPAIR SHOULD BE DONE BY AUTHORIZED SERVICE PERSONNEL ONLY



5925 Heisley Road • Mentor, OH 44060-1833  
 877/CRES COR (273-7267) • 440/350-1100  
 Fax: 440/350-7267 • www.crescor.com

Holding Cabinet	<b>FL-2331</b>
Rev. 4 (6/07)	Page 4 of 8

## OPERATING and MAINTENANCE INSTRUCTIONS

### Models: H138NPSCDOM Series Hot Cabinets

#### TROUBLE-SHOOTING CHART:

##### FAILURE

1. POWER LIGHT (*Yellow*) does NOT light.
2. Unit does not heat.
3. Unit gets too hot or won't shut off.
4. Blower does not work or makes noise.
5. GFCI device trips.

##### POSSIBLE CAUSE

- 1a. Switch is "OFF".
- 1b. Cord unplugged from wall outlet.
- 1c. Circuit breaker/fuse to wall outlet tripped/blown.
- 2a. Temperature control is set too low.
- 2b. Switch is "OFF".
- 3a. Defective electrical parts. **UNPLUG UNIT FROM WALL OUTLET.**
- 4a. Defective blower.
- 5a. The insulation inside the heating element may have absorbed some moisture. This may have occurred if the cabinet has not been used for a long period of time or during shipping and storage of the cabinet. Plug the cabinet into a non-GFCI outlet and set the temperature control to its maximum. Let the cabinet run for about 1 hour to dry out the heating element from any moisture may have been absorbed. **If the circuit breaker trips, call the factory Authorized service agent.** After drying the heating element, plug cabinet into the GFCI receptacle; the cabinet should run properly. **If the GFCI device continues to trip, call the factory Authorized service agent**

GFCI (ground-fault circuit interrupter): A GFCI receptacle is a device that de-energizes a circuit when it detects an unsafe flow of current to ground. The intention of a GFCI device is to minimize the potential for an electrical shock.

*If cause is none of the above, refer to our list of Authorized Service Centers, FL-1400*

## OPERATING and MAINTENANCE INSTRUCTIONS

### Models: H138NPSCDOM Series Hot Cabinets

#### REPLACEMENT PARTS:

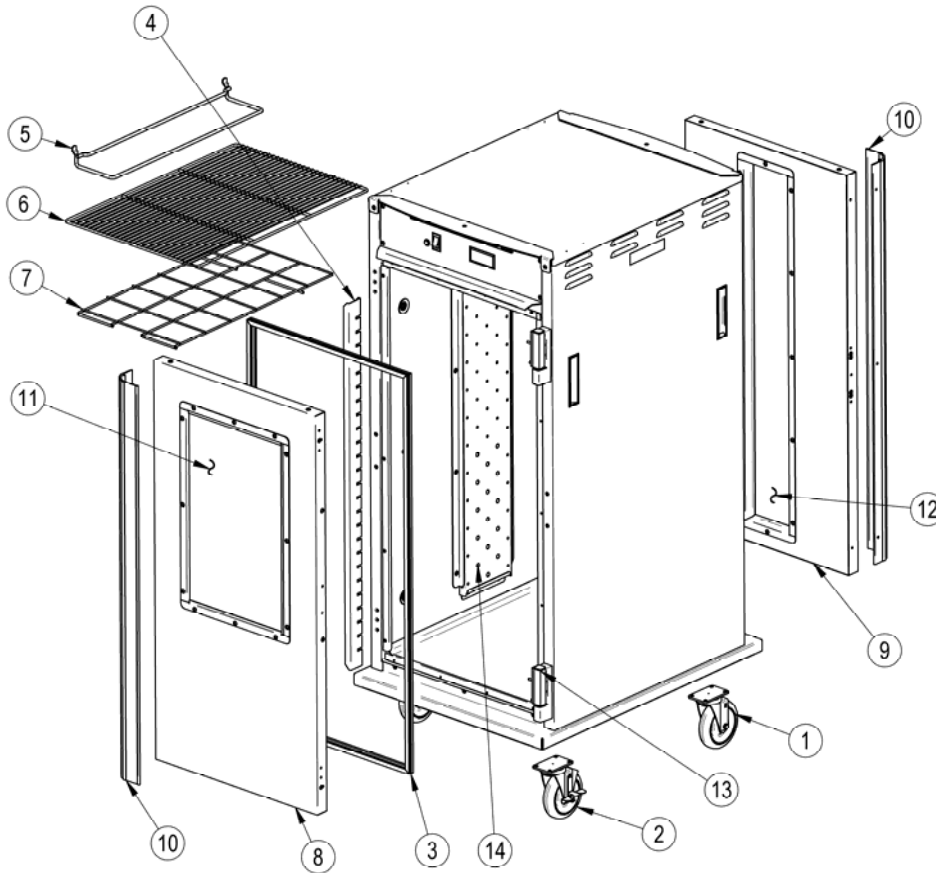


<b>Item</b>	<b><u>Description</u></b>	<b><u>120V</u></b>
1	Blower Kit	0769-180-01-ALK
2	Heater Kit, Air	1370W 0811-289-K
		1920W 0811-022-K
3	High Limit	0848-060
4	Power Switch	0808-116
5	Power Light	0769-094
6	Relay	0857-130
7	Temperature controller	0848-075-DOM
8	Transformer ( <i>used with Temp controller</i> )	0769-159
9	Terminal Block	0852-093
10	Vent Fan	0769-165
	Power Cord	15A 0810-029-06
		20A 0810-065-12

## OPERATING and MAINTENANCE INSTRUCTIONS

### Models: H138NPSCDOM Series Hot Cabinets

#### REPLACEMENT PARTS: (continued)



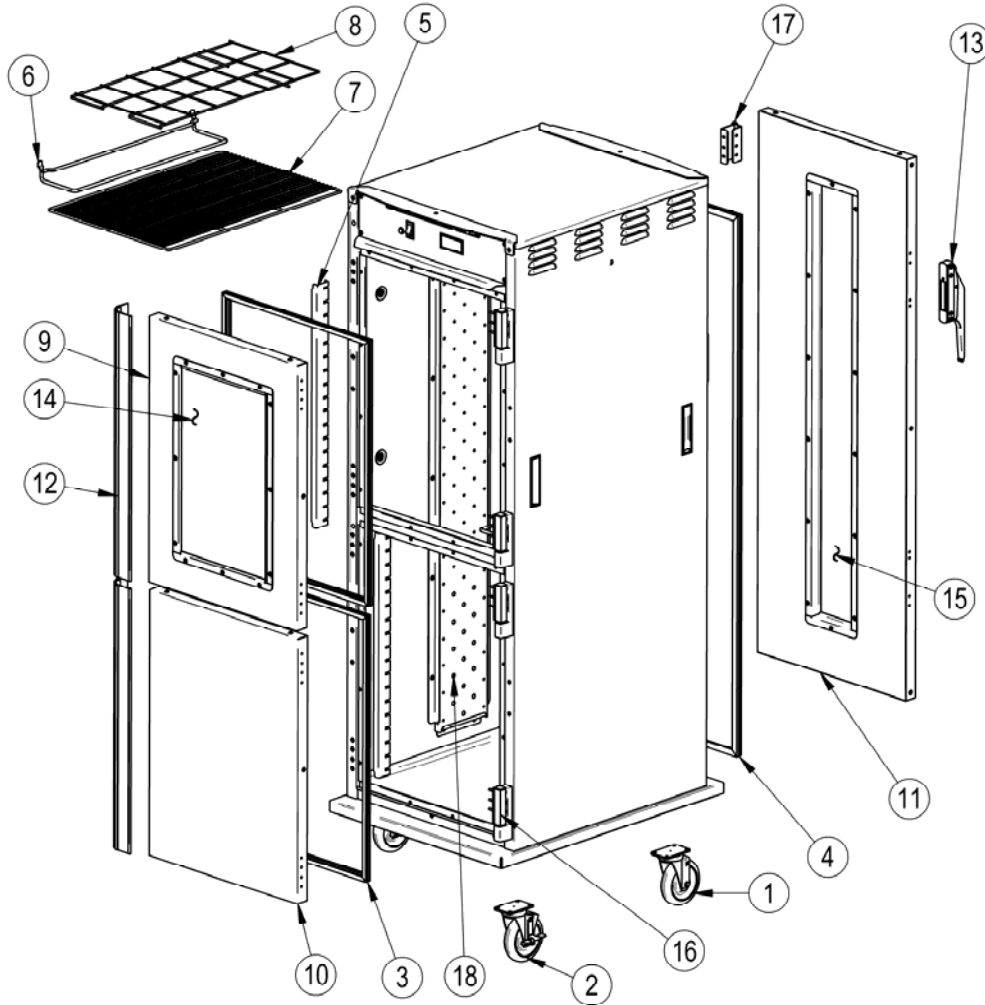
#### Cabinet Replacement Parts: H138NPSCDOM2

Item	Description	Part No.	Item	Description	Part No.
1	Caster	0569-306	9	Door, back	1221-565
2	Caster with brake	0569-306-B	10	Handle, door	0911-099-AB
3	Gasket, doors	0861-264	11	Window, wide	0574-133
4	Post, wire angle	0696-169	12	Window, narrow	0574-155
5	Wire angle	Set of 2 0621-281-K	13	Hinge Kit, lift off	Set of 2 0519-087-K
6	Wire shelf	1170-005	14	Air tunnel	0546-142
7	Wire blower inlet guard	1170-211			
8	Door, front	1221-564			

## OPERATING and MAINTENANCE INSTRUCTIONS

### Models: H138NPSCDOM Series Hot Cabinets

#### REPLACEMENT PARTS: (continued)



#### Cabinet Replacement Parts: H138NPSCDOM3

Item	Description	Part No.	Item	Description	Part No.
1	Caster	0569-306	10	Door, front, solid	1221-534
2	Caster with brake	0569-306-B	11	Door, back, window	1221-550
3	Gasket, front doors	0861-245	12	Handle, door	0911-100-AB
4	Gasket, back door	0861-246	13	Latch, door	1006-120-01-K
5	Post, wire angle	0696-228	14	Window, wide	0574-133
6	Wire angle	Set of 2 0621-281-K	15	Window, narrow	0574-144
7	Wire shelf	1170-005	16	Hinge Kit, lift off	Set of 2 0519-087-K
8	Wire blower inlet guard	1170-211	17	Hinge, butt type	0519-089
9	Door, front, window	1221-535-01	18	Air tunnel	0546-120

# OPERATING and MAINTENANCE INSTRUCTIONS

## Models: H138NPSCDOM Series Hot Cabinets

### WIRING DIAGRAM

