



## Installation Instructions, Service & Warranty Information

### Models Included

- SLG
- ISLG

### Important Safeguards/Conventions

This appliance is designed for commercial use. Any servicing other than cleaning and maintenance should be performed by an authorized Wilbur Curtis service center.

- Do NOT immerse the unit in water or any other liquid
- To reduce the risk of fire or electric shock, do NOT open top panel. No user serviceable parts inside. Repair should be done only by authorized service personnel.
- Keep hands and other items away from hot parts of unit during operation.
- Never clean with scouring powders or harsh implements.

### Conventions



**WARNINGS** – To help avoid personal injury



**Important Notes/Cautions** – from the factory

### QUICK START & SETUP – SLG

1. Install the grinder on a firm, level base in a location where it can be connected to a grounded electrical outlet of 120VAC, rated at 15 amps.
2. Test the unit by running some whole bean coffee through the grinder. If any problems are encountered, refer to the troubleshooting section complete at [www.wilburcurtis.com](http://www.wilburcurtis.com) or call Technical Service at 800-995-0417.

### SETUP INSTRUCTIONS – ISLG

1. Turn both units OFF.
2. Place the grinder close enough to the brewer so the InterLock cable will reach the brewer.



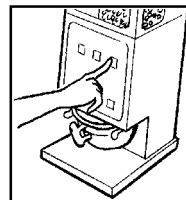
**CAUTION:** Please use this setup procedure before attempting to use this grinder. Failure to follow the instructions can result in injury or the voiding of the warranty.



### OPERATING INSTRUCTIONS – SLG

The SLG grinder is adjusted at the factory to grind 2 - 2.5 ounces of medium roast coffee.

1. Lift off the clear hopper lid and fill the hopper with whole coffee beans.
2. Place a new filter into your brew cone. Slide the brew cone into the brew cone rails on the grinder.
3. Push the START switch on the front panel. The SLG will start to grind coffee into the brew cone.
4. Wait for the grinder motor to stop before removing the brew cone.



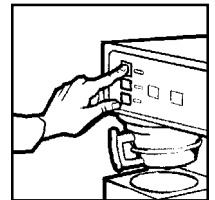
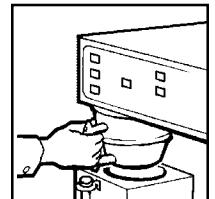
### OPERATING INSTRUCTIONS – ISLG

Factory settings: SMALL grind button, set for 5 seconds (1.3 oz). LARGE grind button, set at 15 seconds (3.8 oz). ISLG -13, has additional MEDIUM button set for 10 seconds.

1. Place the brew cone into the rails on the grinder. Press one of the grind buttons on the switch panel. Ground coffee will start to fill the brew cone.
2. When the grinder motor stops, remove the brew cone and slide it into the rails on the brewer.

3. Press the brew switch that displays the blinking indicator light. This starts a brew cycle.

To cancel a brew cycle, press the ON/OFF switch on the brewer. Brew cycles in process will be cancelled.



**WARNING TO AVOID SCALDING:** Do not remove brewcone while brew light is flashing.

### ADJUSTING THE GRINDS

Refer to illustration page 2.

1. Empty hopper of coffee beans. Run grinder to clear grinding burrs of coffee.
2. Open housing cover to locate adjustment screw (8) and lock nut (7). Loosen lock nut.
3. Run motor during adjustment. Turning adjustment screw clockwise will result in a finer grind (if, while turning, you hear the grinding burrs starting to touch, immediately, back off 1/8th turn). Turning counter clockwise will produce a coarser grind.
4. With a screwdriver holding the adjustment screw in place, tighten the locknut.
5. Run some coffee beans through the machine to check the grind adjustment.
6. Replace front cover on machine.

\*This adjustment may change the amount of ground coffee dispensed.

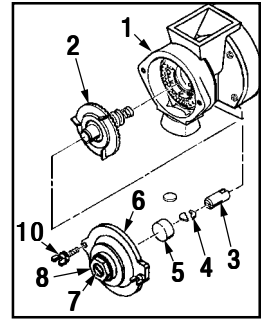


ISO 9001 REGISTERED

WILBUR CURTIS COMPANY  
Montebello, CA 90640

## CHANGING A BROKEN SHEAR DISK

1. Unplug power cord.
2. Open hopper and remove beans, then open front cover.
3. On grind motor assembly, take out two thumb screws (10) and remove grind cap (6).
4. Pull out grinding burr/feed worm assembly (2). Inner half of grinding burrs will remain with housing.
5. Separate shear cap (5) and shear drive (3). Broken shear disk (4) should fall out of slot in drive.
6. Inspect and clean housing (1) of coffee or debris. Especially, look for something that could have snapped shear disk.
7. Re-insert feed worm and grinding burr on motor shaft.
8. Push shear drive through burr/feed worm assembly and align large slot with tongue on motor shaft.
9. Rotate burr/feed worm assembly to align slot with narrow slot on shear drive.
10. Insert a new shear disk into slot. Cover with the shear cap. Replace grind cap and thumb screws.
11. Return power to unit.



## PROGRAMMING THE ISLG

## PROGRAMMING THE ISLG

**NOTE:** Before reprogramming the ISLG, the factory timer settings may be all you need.

The factory settings: The **SMALL** grind button is set for 5 seconds (1.3 oz). The **LARGE** grind button is set at 15 seconds (3.8 oz). On the ISLG -13, there is an additional **MEDIUM** button that is set for 10 seconds.

1. Open timer cover (behind hopper). Find timer and move the switch from **RUN** to **PROGRAM**.
2. Use a stopwatch (recommended) or sweep second hand to time your batches. It is usually quicker to optimize the **SMALL** button first. You will then have a more accurate start point for optimizing the other grind button[s].
3. Place an empty filter and cone under the grinder. With your stopwatch ready, press and hold the **SMALL** front panel button for the desired number of seconds. Weigh the grounds. Record the time and weight. If you are below your target weight, you can reinsert the filter and add time in small increments by pressing and holding the same button. Weigh again and add time as desired to reach your target weight. When you are satisfied with the amount, switch the timer back to **RUN** and re-grind to test the time and weight. Write down the results.
4. When the time/weight programming is completed, install the front cover.



**NOTE:** Time settings in this table are only approximate. Amounts will vary with grind texture and specific coffee bean. Weigh your output, then make adjustments as necessary

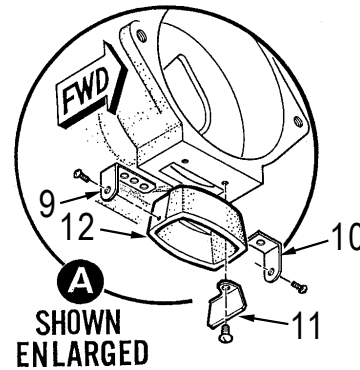
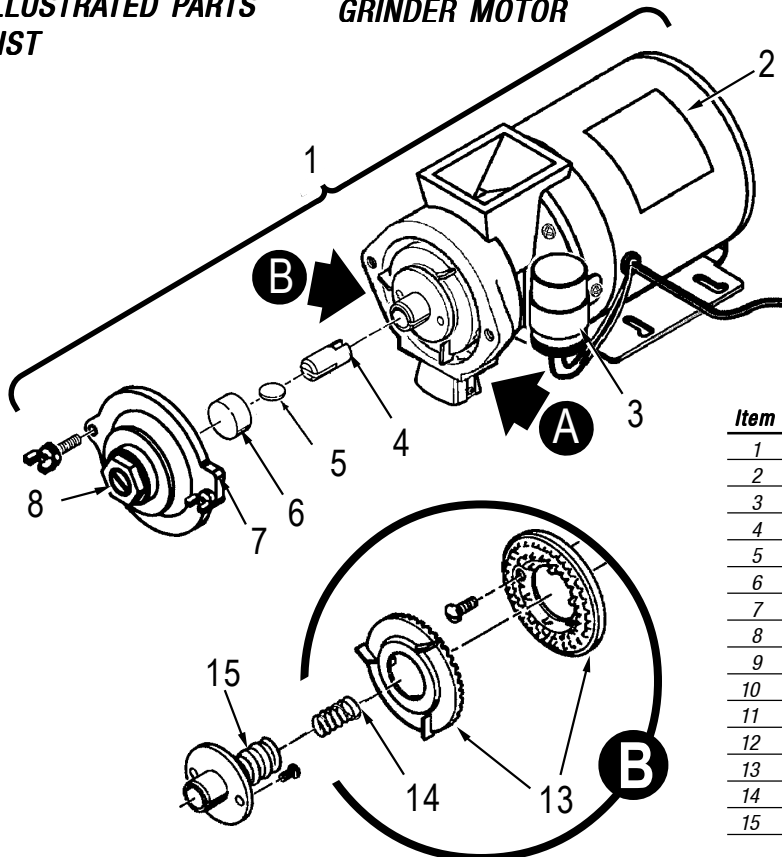
| Seconds | Ounces | Seconds | Ounces |
|---------|--------|---------|--------|
| 4       | 1.0    | 15      | 3.8    |
| 5       | 1.3    | 20      | 5.0    |
| 6       | 1.5    | 25      | 6.3    |
| 7       | 1.8    | 29      | 7.5    |
| 8       | 2.0    | 34      | 8.8    |
| 10      | 2.5    | 39      | 10.0   |
| 12      | 3.0    | 43      | 11.3   |

## SETTING TIMER ON SLG GRINDER

1. Take off timer cover (behind hopper) removing four screws. Locate timer.
2. Timer controls are one high/low switch, allowing you to select a scale on timer dial; outside scale range is .5 through 15, inside scale range is 2 to 60.
3. Test adjustment by grinding some coffee. When amount is satisfactory, reinstall timer cover.

## ILLUSTRATED PARTS LIST

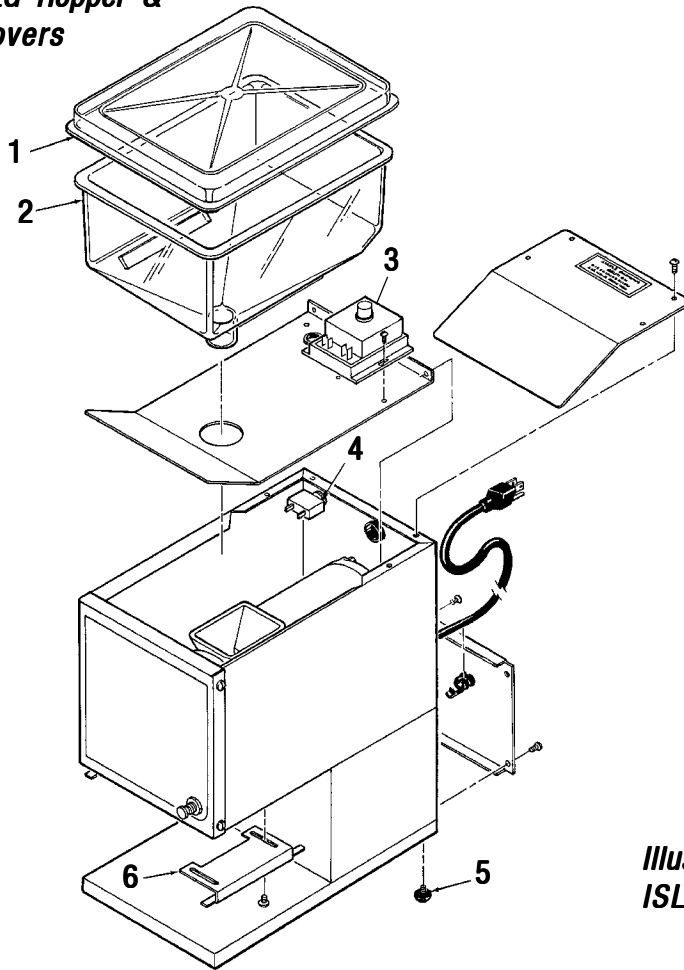
## GRINDER MOTOR



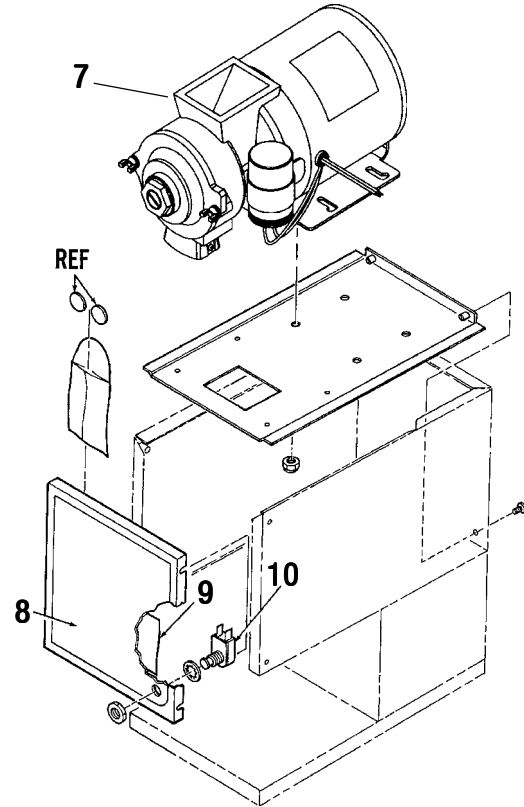
| Item | Part No. | Description                               |
|------|----------|---|
| 1    | WC-9135  | MOTOR CRUSHING GRINDER ASSY 120VAC        |
| 2    | WC-91022 | MOTOR, GRINDER 120VAC                     |
| 3    | WC-91026 | CAPACITOR, COFFEE GRINDER ASSY            |
| 4    | WC-91024 | SHEAR DRIVE COFFEE GRINDER                |
| 5    | WC-91025 | SHEAR DISK                                |
| 6    | WC-91016 | CAP. SHEAR DISK GRINDERS                  |
| 7    | WC-91017 | COVER, GRINDER HOUSING W/LABEL            |
| 8    | WC-91015 | SCREW & THRUST PIN ADJUSTING ASSY         |
| 9    | WC-91029 | SPRINGBAFFLE LONG, NITRIC ACID COLORING   |
| 10   | WC-91027 | SPRING BAFFLE SHORT, NITRIC ACID COLORING |
| 11   | WC-91028 | BAFFLE, SPOUT                             |
| 12   | WC-91023 | SPOUT, GRINDER HOUSING                    |
| 13   | WC-91045 | BURRS, SET CRUSH HIGH FLOW                |
| 14   | WC-91021 | SPRING, TENSION COFFEE GRINDER            |
| 15   | WC-91020 | WORM FEEDING ASSY CCG                     |

# PARTS DIAGRAMS

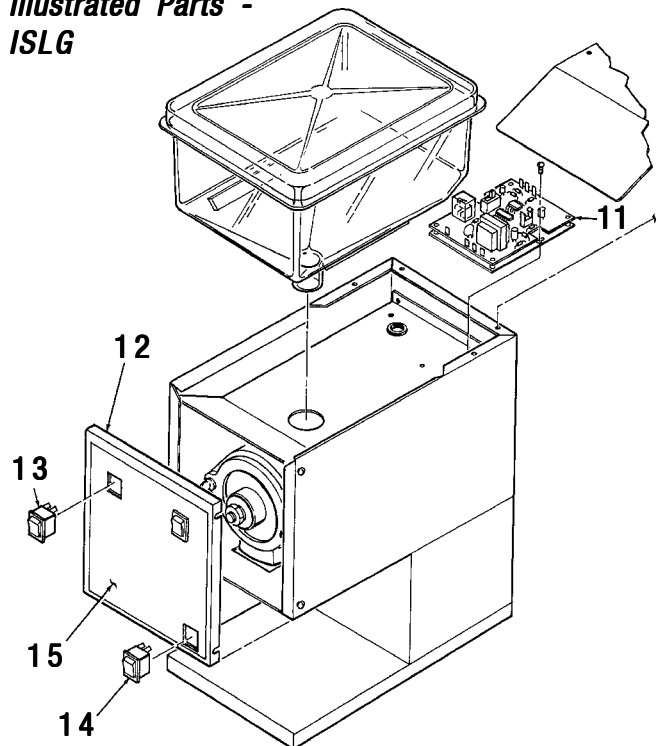
## SLG Hopper & Covers



## SLG Motor Assembly



## Illustrated Parts - ISLG

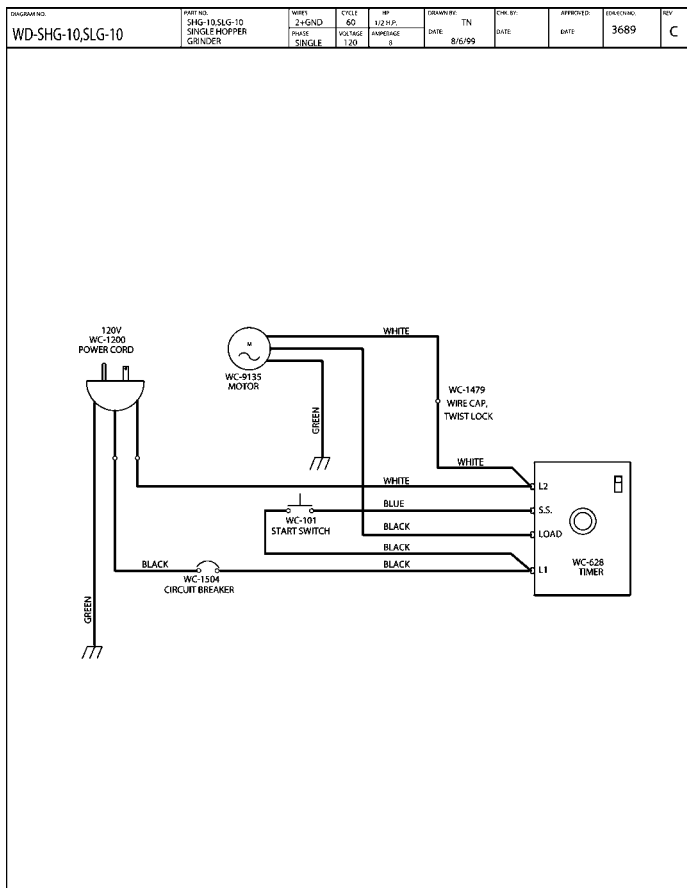
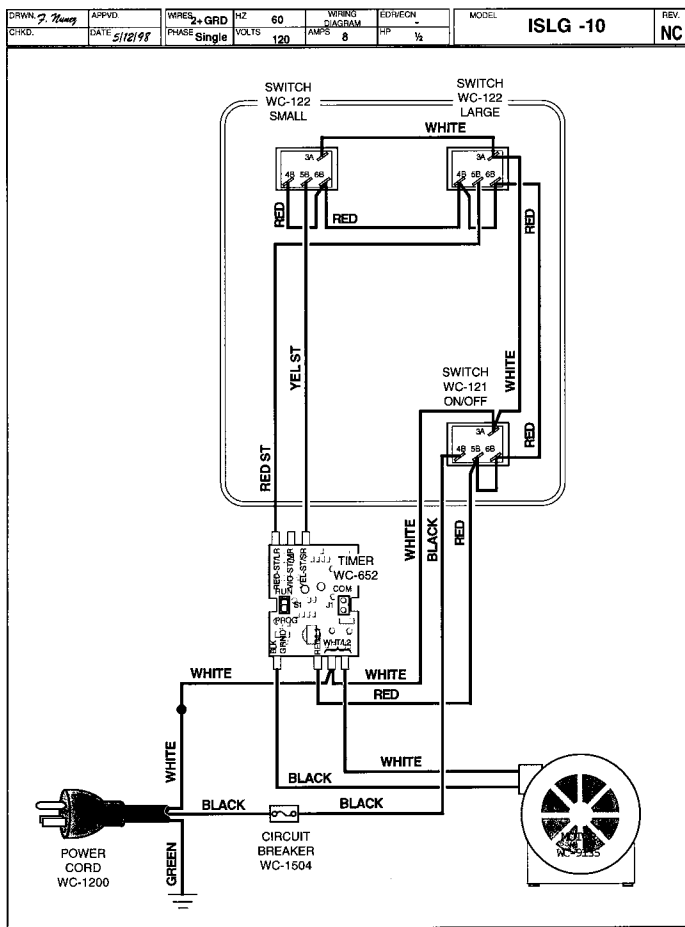


| Item | Part No. | Description                                      |
|------|----------|--|
| 1    | WC-9178  | HOPPER COVER, CLEAR PLASTIC                      |
| 2    | WC-9169  | HOPPER   |
| 3    | WC- 628  | TIMER  |
| 4    | WC-1504  | CIRCUIT BREAKER                                  |
| 5    | WC-3502  | FOOT, RUBBER WITH 8-32 STUD                      |
| 6    | WC-6550  | RAILS, BREW CONE                                 |
| 7    | WC-9135  | MOTOR, 120V                                      |
| 8    | WC-38027 | LABEL, FRONT COVER SLG                           |
| 9    | WC-3796  | LABEL, INSIDE FRONT COVER ADJ GRIND & SHEAR DISK |
| 10   | WC- 101  | SWITCH, START                                    |
| 11   | WC- 652  | TIMER, INTERLOCK                                 |
| 12   | WC-6470  | COVER, FRONT FOR INTERLOCK                       |
| 13   | WC- 122  | SWITCH, 12 CUP, 24 CUP, OR 36 CUP                |
| 14   | WC- 121  | SWITCH, ON/OFF                                   |
| 15   | WC-39062 | LABEL, SWITCH PANEL TWO BATCH (ISLG -10)         |
| 15A  | WC-39048 | LABEL, SWITCH PANEL THREE BATCH (ISLG -13)       |

### Illustrated Parts Breakdown - ISLG

The parts called out on this illustration are for the ISLG grinder and are the only parts that are different from the SLG grinder. All other parts are identical. Illustrated, is the ISLG -10 (a two batch grinder). The ISLG -13 uses a slightly different switch panel and has an additional switch (a three batch grinder).

# ELECTRICAL SCHEMATIC



## WARRANTY We hereby certify that the products manufactured by the Wilbur Curtis Company, Inc., are, to the best of our knowledge, free from all defects and faulty workmanship.

The following warranties and conditions are applicable:

- 90 Days for Labor and 1 Year Parts from Date of Purchase from Factory: This warranty covers all electrical parts, fittings and tubing.
- 40 Months or 40,000 Pounds of Coffee on a set of Grinding Burrs. (ADS Grinders)
- 2 Years from Date of Purchase: This warranty covers electronic control boards and leaking or pitting of a stainless steel body of a Brewer or Um.
- 90 Days from Date of Purchase: On replacement parts that have been installed on out of warranty equipment

All in-warranty service calls must have prior authorization from the manufacturer. For an RMA (Return Merchandise Authorization) number, call the Technical Service Department at 1-800-995-0417. The Wilbur Curtis Company will allow up to 100 miles, round trip, per in-warranty service call.

### CONDITIONS & EXCEPTIONS

The warranty covers original equipment at time of purchase only. The Wilbur Curtis Company, Inc., assumes no responsibility for substitute replacement parts installed on Curtis equipment that have not been purchased from the Wilbur Curtis Company, Inc. The Wilbur Curtis Company will not accept any responsibility if the following conditions are not met. The warranty does not cover and is void under these circumstances:

- 1) Improper operation of equipment. The equipment must be used for its designed and intended purpose and function.
- 2) Improper installation of equipment. This equipment must be installed by a professional, certified technician and must comply with all local electrical, mechanical and plumbing codes.
- 3) Wilbur Curtis Company will not be responsible for the operation of equipment at other than the stated voltages on the serial plate.
- 4) Abuse or neglect (including failure to periodically clean or remove lime accumulations). Manufacturer is not responsible for variation in equipment operation due to excessive lime or local water conditions.
- 5) Replacement of items subject to normal use and wear. This shall include, but is not limited to, light bulbs, shear disks, "O" rings, gaskets, canister assemblies, whipper chambers and plates, mixing bowls, agitation assemblies and whipper propellers.
- 6) Any faults resulting from inadequate water supply. This includes, but is not limited to, excessive or low water pressure, and inadequate or fluctuating water flow rate.
- 7) All repairs and/or replacements are subject to our decision that the workmanship or parts were faulty and the defects showed up under normal use.
- 8) All labor shall be performed during regular working hours. Overtime charges are the responsibility of the owner.
- 9) Charges incurred by delays, waiting time, or operating restrictions that hinder the service technician's ability to perform service is the responsibility of the owner of the equipment. This includes institutional and correctional facilities.
- 10) All claims under this warranty must be submitted to the Wilbur Curtis Company Technical Service Department before return of the unit to the factory.
- 11) All equipment returned to us must be repackaged properly in the original carton. No units will be accepted if they are damaged in transit due to improper packaging.
- 12) Damaged in transit.
- 13) The resetting of safety thermostats and circuit breakers, programming and temperature adjustments are the responsibility of the equipment owner.

**NO UNITS OR PARTS WILL BE ACCEPTED WITHOUT A RETURN MERCHANDISE AUTHORIZATION (RMA). RMA NUMBER MUST BE MARKED ON THE CARTON OR SHIPPING LABEL.**

All in-warranty service calls must be performed by an authorized service center, where service is available. Call the factory for location near you.



### WILBUR CURTIS CO., INC.

6913 Acco St., Montebello, CA 90640-5403 USA  
 Phone: 800/421-6150 ♦ Fax: 323-837-2410

♦ Technical Service Phone: 800/995-0417 (M-F 5:30A - 4:00P PST) ♦ E-Mail: techservice@wilburcurtis.com  
 ♦ Web Site: www.wilburcurtis.com

**FOR THE LATEST SPECIFICATION INFORMATION GO TO WWW.WILBURCURTIS.COM**