

FIND OUT MORE
ON THE WEB.
WILBURCURTIS.COM

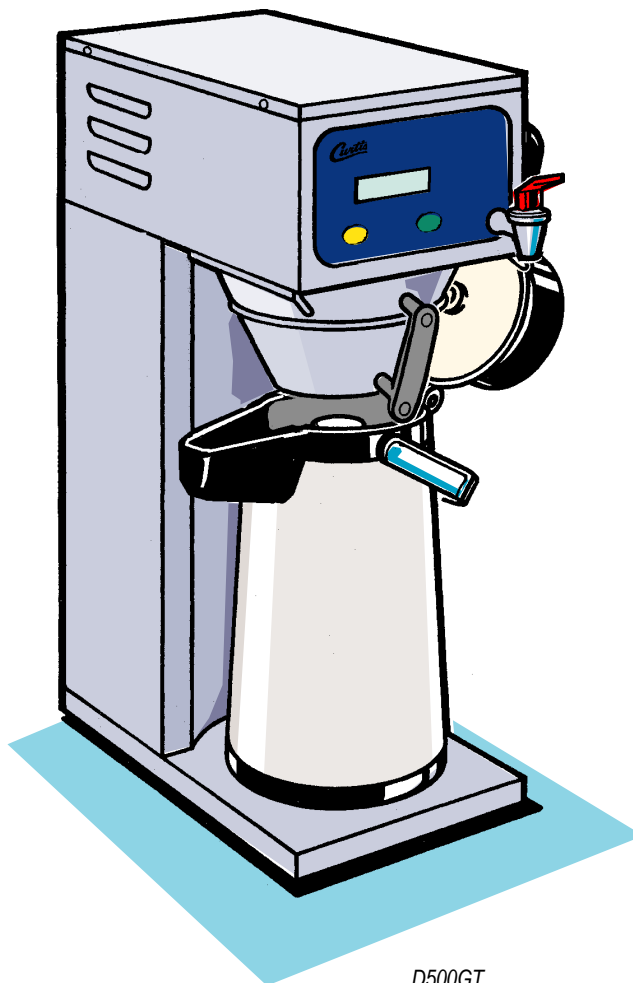
Installation Instructions Service & Warranty Information



Revised Sept. 2002

Models Included

- D500GT
- D500GT/H



D500GT



DIGITAL AIRPOT BREWING SYSTEMS

WILBUR CURTIS COMPANY • Montebello, CA 90640

FOR THE LATEST SPEC INFORMATION GO TO WWW.WILBURCURTIS.COM



D500 Generation 3 - Airpot Brewer Instructions

Important Safeguards/Conventions

This appliance is designed for commercial use. Any servicing other than cleaning and maintenance should be performed by an authorized Wilbur Curtis service center.

- Do NOT immerse the unit in water or any other liquid
- To reduce the risk of fire or electric shock, do NOT open top or rear panel. No user serviceable parts inside. Repair should be done only by authorized service personnel.
- Keep hands and other items away from hot parts of unit during operation.
- Never clean with scouring powders, bleach or harsh implements.

Conventions



WARNINGS – To help avoid personal injury



Important Notes/Cautions – from the factory



Sanitation Requirements

Your Curtis ADS System is Factory Pre-Set and Ready to Go... Right out of the Carton.

Following are the Factory Settings for your D500GT Airpot Coffee Brewing System:

- **Brew Temperature** = 200°F
- **Brew Volume** = Set to dispensing vessel requirements (2.2 liters)

Generally there will never be a reason to change your ADS programming. However, should you need to make slight adjustments to meet your brewing needs, programming instructions are provided later in this manual.

System Requirements:

- **Water Source** 20 – 90 PSI (Minimum Flow Rate of 1 GPM)
- **Electrical:** See attached schematic for standard model or visit www.wilburcurtis.com for your model.

Equipment to be installed to comply with applicable federal, state, or local plumbing/electrical codes having jurisdiction.

SETUP STEPS

The unit should be level (left to right and front to back), located on a solid counter top. Connect a water line from the water filter to the brewer. **NOTE:** Some type of water filtration device must be used to maintain a trouble-free operation. (In areas with extremely hard water, we suggest that a sedimentary and taste & odor filter be installed.) This will prolong the life of your brewing system and enhance coffee quality.



The National Sanitation Foundation requires the following water connection:

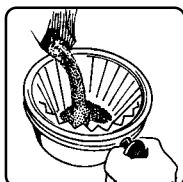
1. A quick disconnect or additional coiled tubing (at least 2x the depth of the unit) so that the machine can be moved for cleaning underneath.
2. In some areas an approved backflow prevention device may be required between the brewer and water supply.

1. A 3/8" NPT x 1/4" Flare elbow has been supplied for water line connection. Use tubing sized sufficiently to provide a minimum of 1.0 GPM.
2. Connect the unit to an appropriate electrical power circuit.
3. Turn on the toggle (STANDBY/ON) switch behind the unit. The heating tank will start to fill. When the water level in the tank rises to the correct volume, the heating elements will energize automatically. With ADS Systems there is no danger of element burnout caused by an empty tank.
4. The heating tank will require 20 to 30 minutes to reach operating temperature (200°F) as indicated by the READY-TO-BREW indicator light.
5. Prior to brewing, dispense 12 ounces of hot water through the hot water faucet.
6. Brew a cycle of at least 12 ounces, to purge the water lines of any air that may be trapped after filling.

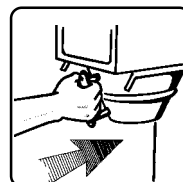
BREWING INSTRUCTIONS

1. Brewer should be ON (Confirm at rear toggle switch, then press ON/OFF button). Ready-to-Brew should be displayed.
2. Place empty airpot on deck.
3. Place filter in brewcone.

4. Pour ground coffee into brewcone.



5. Position brewcone into brew rails.

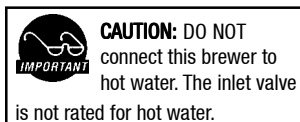
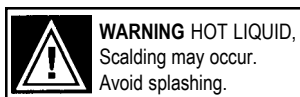


6. Press Brew button.



Models Included

- D500GT
- D500GT/H



WILBUR CURTIS COMPANY
Montebello, CA 90640

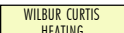
Quick Start


D500 GT

Your Curtis ADS System is Factory Pre-Set for Optimum Performance.

After connection to water and power; the rear toggle switch must be on. You will hear a beep sound, indicating power is available to the controller.

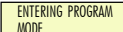

The control displays . Press ON/OFF button and the screen will display . After three seconds,  is displayed.

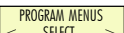
Water will fill the tank (approximately 2-3 minutes depending on water flow rate). When the proper level is reached  will appear on the screen.

Control will display  when temperature reaches the setpoint (200°F). Unit is now ready to brew.

To Go Into Programming

Press **ON/OFF** button (yellow). Press and hold **BREW** button (green) and then press and release **ON/OFF** button (yellow).

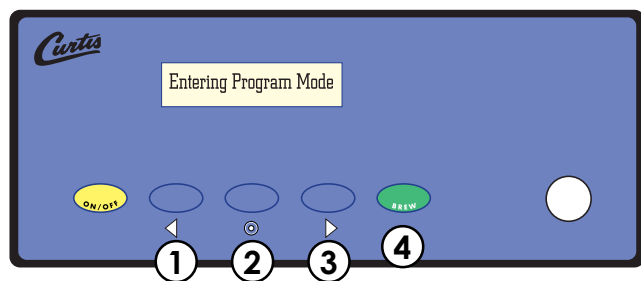
Continue holding **BREW** button. Display will read , wait until  is displayed. Enter the 4-digit access code, the digits 1-4 correspond to the buttons (see illustration below).

The default code set at the factory is 1-2-3-4. Then  will be displayed.

All programming selections are performed with the three center buttons. The symbols below the buttons are:

- ◀ Scroll LEFT
- ⊙ SELECTION or ENTER to save new parameter
- ▶ Scroll RIGHT

Exit Press ⊙ to select, exits program mode and returns unit to operation.



PROGRAM MENUS



During actual brew cycle a 2-minute drip mode is added to the brew time. The programmed water level compensates for back to back brewing in Delta 3 to allow for an increase of water volume.

Brew Volume (Factory Set at 60 oz)

Selecting **Brew by Volume** or **Brew by Time** depends on whether you know your brew time before starting.

From Program Menus press > display will now show the next feature.

Brew by Volume: Press ⊙ to Select, Display will now show Push START To Begin... Press the **BREW** button then hot water starts running, when desired volume is reached press **BREW** button again to stop the flow. Now the volume has been set. Pressing > button will display the subsequent menu features.

Next item in the sequence is **Brew by Time**. Press ⊙ to Select to change the brew time. Display will now show the current time. By pressing < or > you can toggle back and forth from minutes to seconds to exit (ex). Change the time or set and exit by pressing ⊙.

Temperature (Factory set 200°F)

Press ⊙ to Select. Press < or > to move to desired temperature and then ⊙ to set. Temperature is programmable from 170°F to 204°F in 2-degree increments.

Energy Save Mode (Factory setting OFF)

Press ⊙ to Select, < or > ON or OFF, ⊙ to set. When on, temperature is at 140°F. Also, when enabled unit will automatically shut off 4 hours from last brew. When feature is OFF, unit does not have the energy saving mode. This feature will save a considerable amount of energy by not heating the tank during periods of non-operation (tank temperature maintains at 140°F).

Brew Count Odom.

Press ⊙ to display total brew cycles. Press **ex** or Reset

Freshness Timer (Factory set Disable)

Press ⊙ to Select, < to Off, or select > to set from 20 minutes to 120 minutes in 10 minute increments, ⊙ to set.

Brew Count Total

Press ⊙ to Select, Shows total gallons and total brew cycles on the unit. Not resettable.

Cold Brew Lock . . . (Factory set Delta 3)

Press ⊙ to select, < or > to select desired setting (CBL 5, 15 or OFF), ⊙ to set.

The CBL feature allows the brewer to brew at three different temperature levels from the actual set point. The first setting is within 5 degrees of set point, next is within 15 degrees of set point, OFF is within 30 degrees of set point for the Ready to Brew message, however it will brew at any temperature. This feature will operate after initialization to set temperature after the rear standby toggle switch is reset to ON.

Master Reset

Press ⊙ to display **Are You Sure?**

Then < for **Yes**, > for **No**.

Brewer factory defaults are then reset.

Service Call (Phone number)

Press ⊙ to display number and change number or < to move place and EX to exit when complete. This number will be displayed during a Heating system SENSOR ERROR or during a WATER ERROR.

Access Code (Factory set 1-2-3-4)

Press **⊙** to display number and change number, (the number can be change 1 to 4) or **<** to move place and **ex** to exit when complete.

Banner Name

Press **⊙** to display letters and change letters or **<** to move place and **EX** to exit when complete

This feature allows up to 14 letters to be programmed for company name or regional name. Programming all blanks disables Banner Name. If programmed, Banner Name is displayed every 5 sec. on and off.

P-Maintenance

Press **⊙** to Select, Set gallons brewed to indicate P-Maintenance. Press **<** or **>** to adjust from Off to 3000 gallons. Press **⊙** to exit.

Beeper On/Off

Press **⊙** to display ON or OFF. Pressing either **<** or **>** toggles between on and off. **⊙** to set.

Model Select

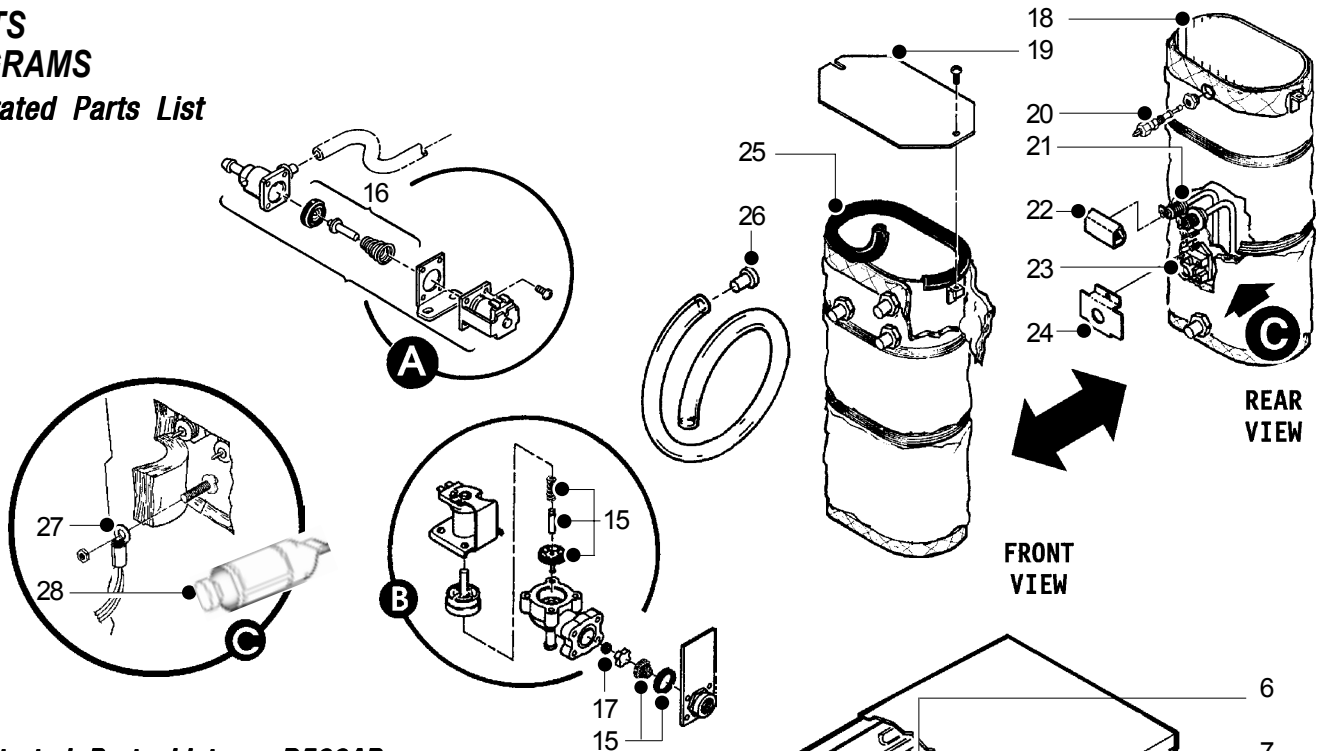
Press **⊙** to select, **<** or **>** to select desired model (ALPHA-1, ALPHA-2, ALPHA-3/4/5, Airpot Brewer, Thermo-Alpha) Press **⊙** to set. The control will reset itself when a new model is selected.

Exit

Press **⊙** to select, exits program mode and returns unit to operation.

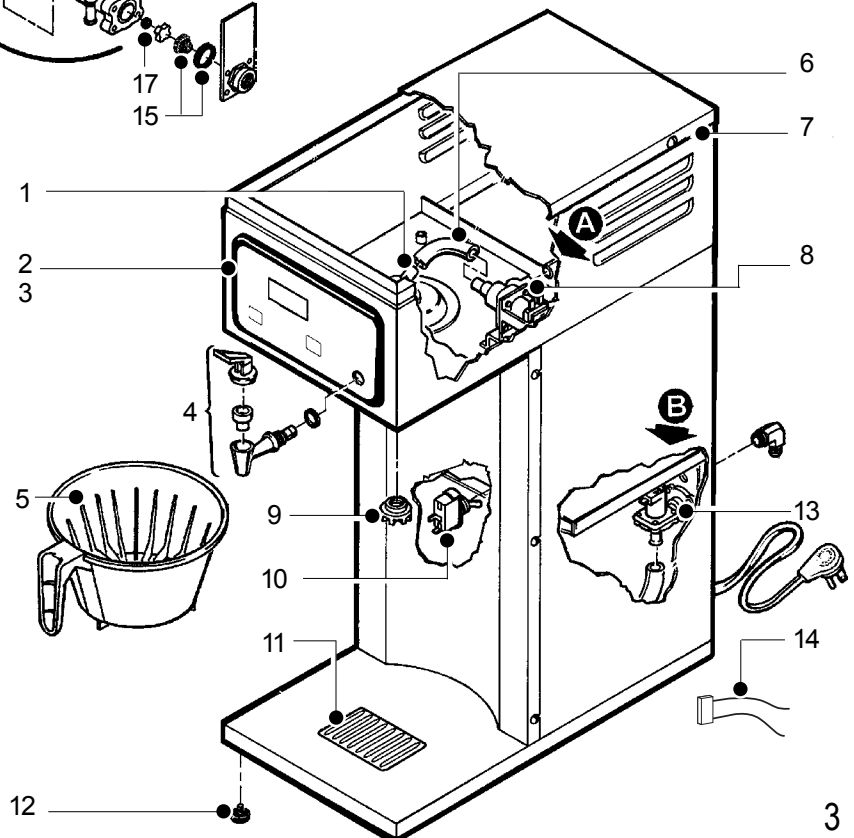
PARTS DIAGRAMS

Illustrated Parts List

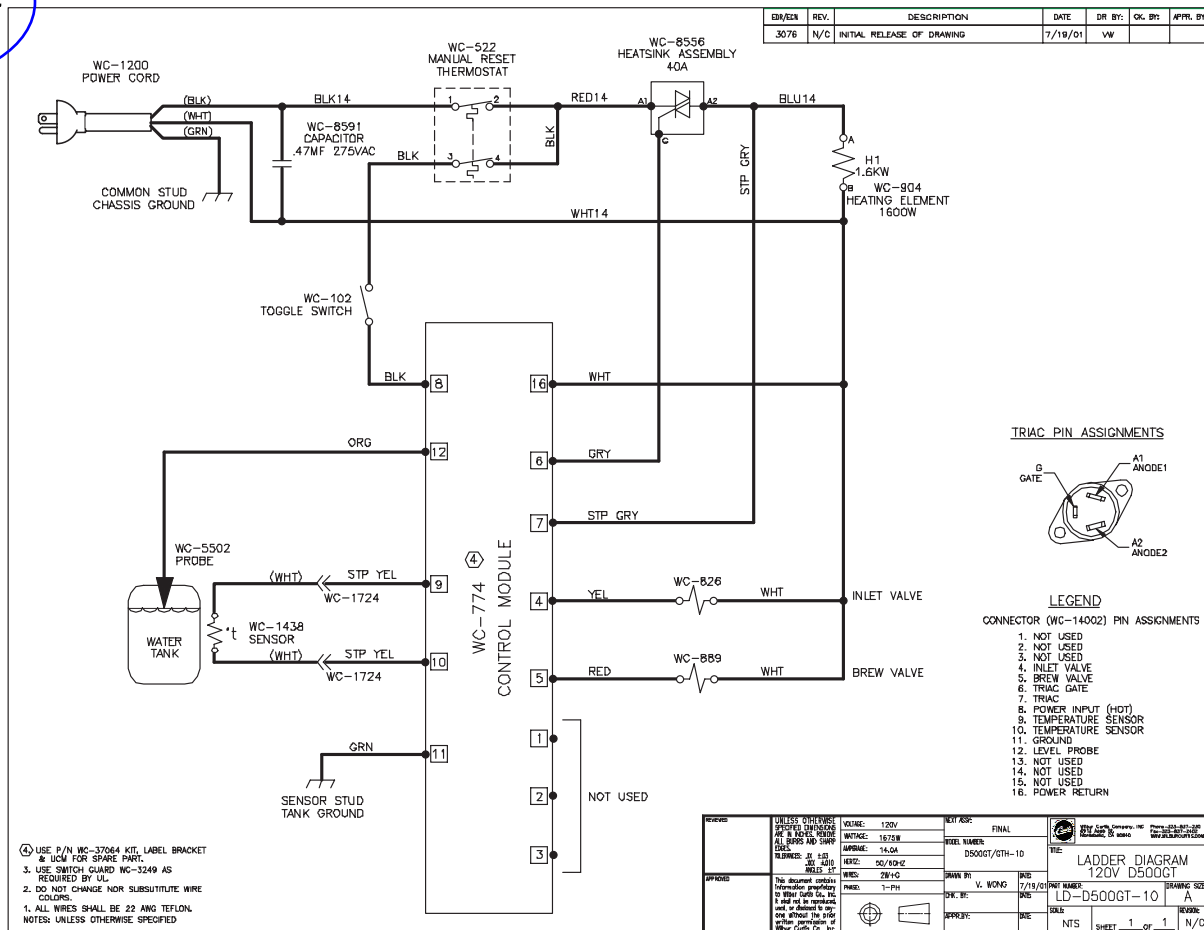


Illustrated Parts List – D500AP

| Nº | Part Nº | Description |
|----|-------------|---------------------------------------|
| 1 | WC-2977 | FITTING ASSY, SPRAYHEAD |
| 2 | WC-37064 | KIT, LABEL/BKT/UCM D500GT CURTIS |
| 3 | WC-39346 | LABEL, CONTROL MODULE PANEL CURTIS |
| 4 | WC-1809 | FAUCET, HOT WATER W/JAM NUT |
| 5 | WC-3621 | BREWCONC, UNIV7 1/8" BLK PLASTIC |
| 6 | WC-5310 | TUBING, SILICONE, 5/16" I.D. (1 FT.) |
| 7 | WC-5450 | COVER, TOP |
| 8 | WC- 817 | VALVE, DUMP RIGHT 120V |
| 9 | WC-2936 | SPRAYHEAD, RED (.131 DIA.) |
| 10 | WC- 102 | SWITCH, TOGGLE 125/250 VAC RESISTIVE |
| 11 | WC-6221-01 | GRID, DRIP TRAY AIRPOT |
| 12 | WC-3503 | LEG, SCREW BUMPER 3/8-16 STD |
| 13 | WC- 826 | VALVE, 1.15 GPM 120V |
| 14 | WC-8591 | CAPACITOR, X2 |
| 15 | WC-3763 | KIT, VALVE REPAIR USE ON WC817 |
| 16 | WC-3765 | KIT, VALVE REPAIR USE ON WC-826 |
| 17 | WC- 830 | WASHER, FLW 1/2" 1.0 GPM USE W/WC-826 |
| 18 | WC-6277 | TANK COMPLETE, D500GT 120V |
| 19 | WC-5851 | COVER, TANK W/NOTCHES |
| 20 | WC-5502-01 | PROBE ASSY, WATER LEVEL |
| 21 | WC- 904 | HEATING ELMNT 1600W 120V W/NUTS |
| 22 | WC-4394 | GUARD, SHOCK HEATING ELEMENT |
| 23 | WC- 522 | THERMOSTAT RESET |
| 24 | WC-43055 | GUARD, SHOCK RESET THERMOSTAT |
| 25 | WC-43062 | GASKET, HEATING TANK |
| 26 | WC-43058 | PLUG, TANK DRAIN, PP RED |
| 27 | WC-1438-101 | SENSOR, HEATING TANK |
| 28 | WC-5231 | COMPOUND, SILICONE 5 OZ TUBE |



ELECTRICAL SCHEMATIC



WARRANTY

We hereby certify that the products manufactured by the Wilbur Curtis Company, Inc., are, to the best of our knowledge, free from all defects and faulty workmanship.

The following warranties and conditions are applicable:

- 90 Days for Labor and 1 Year Parts from Date of Purchase from Factory: This warranty covers all electrical parts, fittings and tubing.
- 40 Months or 40,000 Pounds of Coffee on a set of Grinding Burrs. (ADS Grinders)
- 2 Years from Date of Purchase: This warranty covers electronic control boards and leaking or pitting of a stainless steel body of a Brewer or Urn.
- 90 Days from Date of Purchase: On replacement parts that have been installed on out of warranty equipment

All in-warranty service calls must have prior authorization from the manufacturer. For an RMA (Return Merchandise Authorization) number, call the Technical Service Department at 1-800-995-0417. The Wilbur Curtis Company will allow up to 100 miles, round trip, per in-warranty service call.

CONDITIONS & EXCEPTIONS

The warranty covers original equipment at time of purchase only. The Wilbur Curtis Company, Inc., assumes no responsibility for substitute replacement parts installed on Curtis equipment that have not been purchased from the Wilbur Curtis Company, Inc. The Wilbur Curtis Company will not accept any responsibility if the following conditions are not met. The warranty does not cover and is void under these circumstances:

- Improper operation of equipment. The equipment must be used for its designed and intended purpose and function.
- Improper installation of equipment. This equipment must be installed by a professional, certified technician and must comply with all local electrical, mechanical and plumbing codes.
- Wilbur Curtis Company will not be responsible for the operation of equipment at other than the stated voltages on the serial plate.
- Abuse or neglect (including failure to periodically clean or remove lime accumulations). Manufacturer is not responsible for variation in equipment operation due to excessive lime or local water conditions.
- Replacement of items subject to normal use and wear. This shall include, but is not limited to, light bulbs, shear disks, "O" rings, gaskets, canister assemblies, whipper chambers and plates, mixing bowls, agitation assemblies and whipper propellers.
- Any faults resulting from inadequate water supply. This includes, but is not limited to, excessive or low water pressure, and inadequate or fluctuating water flow rate.
- All repairs and/or replacements are subject to our decision that the workmanship or parts were faulty and the defects showed up under normal use.
- All labor shall be performed during regular working hours. Overtime charges are the responsibility of the owner.
- Charges incurred by delays, waiting time, or operating restrictions that hinder the service technician's ability to perform service is the responsibility of the owner of the equipment. This includes institutional and correctional facilities.
- All claims under this warranty must be submitted to the Wilbur Curtis Company Technical Service Department before return of the unit to the factory.
- All equipment returned to us must be repackaged properly in the original carton. No units will be accepted if they are damaged in transit due to improper packaging.
- Damaged in transit.
- The resetting of safety thermostats and circuit breakers, programming and temperature adjustments are the responsibility of the equipment owner.

NO UNITS OR PARTS WILL BE ACCEPTED WITHOUT A RETURN MERCHANDISE AUTHORIZATION (RMA). RMA NUMBER MUST BE MARKED ON THE CARTON OR SHIPPING LABEL.

All in-warranty service calls must be performed by an authorized service center, where service is available. Call the factory for location near you.



WILBUR CURTIS CO., INC.

6913 Acco St., Montebello, CA 90640-5403 USA

Phone: 800/421-6150 ♦ Fax: 323-837-2410

♦ Technical Service Phone: 800/995-0417 (M-F 5:30A - 4:00P PST) ♦ E-Mail: techservice@wilburcurtis.com

♦ Web Site: www.wilburcurtis.com

FOR THE LATEST SPECIFICATION INFORMATION GO TO WWW.WILBURCURTIS.COM