



EODC

E-Chef™ Open Shelf Module with Double Tier Cantilevered Overshelf

Project _____
 Item _____
 Quantity _____
 CSI Section 11400
 Approved _____
 Date _____

EODC: E-Chef™ Open Shelf Module with Double Tier Overshelf

Models

EODC24	24" open shelf and double tier overshelf module	EODC60	60" open shelf and double tier overshelf module
EODC27	27" open shelf and double tier overshelf module	EODC64	64" open shelf and double tier overshelf module
EODC32	32" open shelf and double tier overshelf module	EODC72	72" open shelf and double tier overshelf module
EODC36	36" open shelf and double tier overshelf module	EODC74	74" open shelf and double tier overshelf module
EODC48	48" open shelf and double tier overshelf module		



EODC36

Standard Features

Base:

- Stainless steel top and sides
- Stainless steel bottom and center shelf with 3" riser at the rear
- Standard on flanged feet

Overshelf:

- Double tier cantilevered overshelf welded in place
- Stainless steel shelves and legs
- Integral brace raceway under each shelf for field added components

Options & Accessories

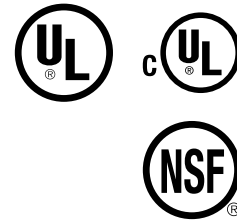
- Raceways (shipped loose)

Specifications

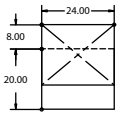
Base Exterior: Top is one-piece heavy-gauge stainless steel with integral 2.12" square nosing on front with 1.62" turn up at the rear. Sides are heavy-gauge single thickness stainless steel with 2" bends on front and rear.

Base Interior: Bottom and center shelves are heavy-gauge stainless steel with a 3" riser at the rear.

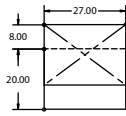
Overshelf: Double tier overshelf is constructed of heavy gauge stainless steel and is welded to the top of the base module. Overstructure cantilevers to rear of base. Each shelf is 20" deep and has a standard 5" brace with removable cover to act as an electrical raceway for field added components.



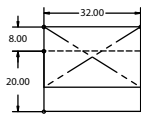
E-DC E-Chef™ Open Shelf Module with Double Tier Overshelf



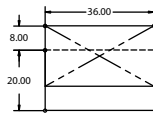
Plan View
EODC24



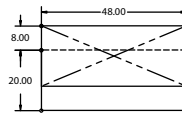
Plan View
EODC27



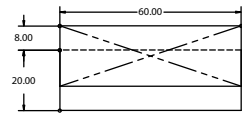
Plan View
EODC32



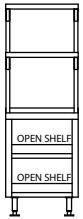
Plan View
EODC36



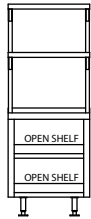
Plan View
EODC48



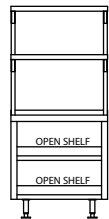
Plan View
EODC60



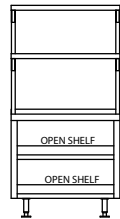
Elevation View
EODC24



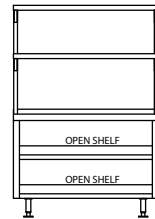
Elevation View
EODC27



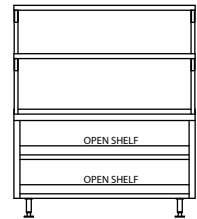
Elevation View
EODC32



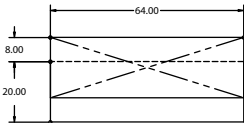
Elevation View
EODC36



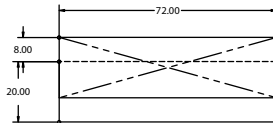
Elevation View
EODC48



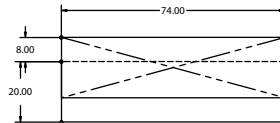
Elevation View
EODC60



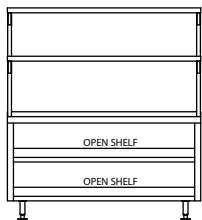
Plan View
EODC64



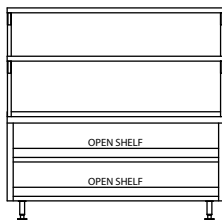
Plan View
EODC72



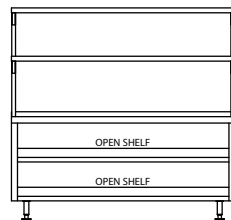
Plan View
EODC74



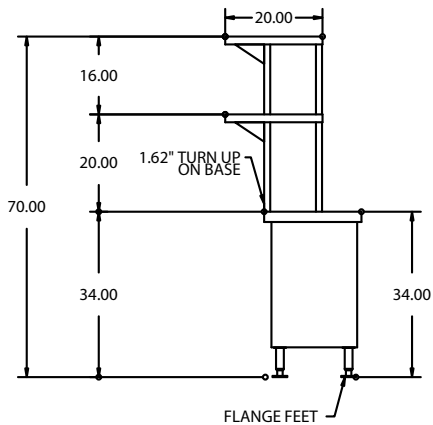
Elevation View
EODC64



Elevation View
EODC72



Elevation View
EODC74



Side View
all EODC models

Specifications				
Model	L	D	H	Ship Weight
EODC24	24"	28"	70"	200
EODC27	27"	28"	70"	225
EODC32	32"	28"	70"	240
EODC36	36"	28"	70"	250
EODC48	48"	28"	70"	280
EODC60	60"	28"	70"	320
EODC64	64"	28"	70"	330
EODC72	72"	28"	70"	360
EODC74	74"	28"	70"	370