



F2000 and F17 Series Equipment Stands

Service, Installation and Care Manual

Please read this manual completely before attempting to install or operate this equipment! Notify carrier of damage! Inspect all components immediately. See page 2.

Warning

To assure proper operation a 2" airspace must be maintained between the bottom of any cooking equipment and the top of this unit. Cooking equipment must have a barrier (i.e. bottom, drip pan) between its heat source and the top of the equipment stand. Failure to comply with this could severely damage the equipment stand and void all warranties.



**IMPORTANT INFORMATION
READ BEFORE USE
PLEASE SAVE THESE INSTRUCTIONS!**

Effective Date August 2005

Contents

RECEIVING AND INSPECTING	2
SPECIFICATIONS	3-4
INSTALLATION.....	5-6
PRESSURE CONTROL SETTINGS.....	6-7
OPERATION	6-7
PARAGON TIME CLOCK DIAL.....	7
CARE AND CLEANING	8
THERMOMETER.....	8
WIRING DIAGRAMS	9
WALL ANCHOR ASSEMBLY.....	10
CONDENSING UNIT ASSEMBLY DRAWING.....	11
MULLION COIL ASSEMBLY DRAWINGS	
REMOTE REFRIG.	12
SELF CONTAINED REFRIG.....	13
FREEZERS	14
DOOR ASSEMBLY.....	15
DRAWER ASSEMBLY DRAWING	15
REPLACEMENT PARTS.....	16-17
STANDARD WARRANTIES.....	18-20
NOTES	21-23

Serial Number Location

The serial number on remote models is located behind the 6" (15.2 cm) stainless steel panel.

The serial number on self-contained models is located in the compressor housing.

The serial number tag shows the refrigerant used and the amount of charge and amperage.

Always have the serial number of your unit available when calling for parts and service.

©2005 The Delfield Company. All rights reserved. Reproduction without written permission is prohibited. "Delfield" is a registered trademark of The Delfield Company.

Receiving and Inspecting the Equipment

Even though most equipment is shipped crated, care should be taken during unloading so the equipment is not damaged while being moved into the building.

1. Visually inspect the exterior of the package and skid or container. Any damage should be noted and reported to the delivering carrier immediately.
2. If damaged, open and inspect the contents with the carrier.
3. In the event that the exterior is not damaged, yet upon opening, there is concealed damage to the equipment notify the carrier. Notification should be made verbally as well as in written form.
4. Request an inspection by the shipping company of the damaged equipment. This should be done within 10 days from receipt of the equipment.
5. Check the lower portion of the unit to be sure legs or casters are not bent.

6. Also open the compressor compartment housing and visually inspect the refrigeration package. Be sure lines are secure and base is still intact.
7. Freight carriers can supply the necessary damage forms upon request.
8. Retain all crating material until an inspection has been made or waived.

Uncrating the Equipment

First cut and remove the banding from around the crate.

Remove the front of the crate material, use of some tools will be required. If the unit is on legs remove the top of the crate as well and lift the unit off the skid. If the unit is on casters it can be "rolled" off the skid.

Specifications

MODEL NUMBER	# OF PANS	# OF DRAWERS	VOLTAGE/ HERTZ/PHASE	AMPS	H.P.	NEMA PLUG	WEIGHT	BTU LOAD	BTU SYSTEM	EVAP. CAP. BTU
-----------------	--------------	-----------------	-------------------------	------	------	--------------	--------	-------------	---------------	-------------------

Low-Profile Freezer Base Equipment Stands

F2748	4	2	115/60/1	10.0	1/2*	N/S	295	1032	—	160
F2776	8	4	115/60/1	10.0	3/4*	N/S	375	1770	—	160
F2660	4	2	115/60/1	12.0	1/2	5-15P	418	925	1776	—
F2694	8	4	115/60/1	16.0	3/4	5-20P	500	1558	2713	—

*Recommended horsepower N/S=Not Supplied, unit must be hard wired

12x20 # OF PANS	VOLTS	AMPS	RECOMMENDED H.P.	NEMA PLUG	WEIGHT	BTU LOAD	EVAP CAP BTU
--------------------	-------	------	---------------------	--------------	--------	-------------	-----------------

Low-Profile Refrigerator Base Equipment Stands

REMOTE

F2852	4	115/60/1	3.0	1/5	N/S	278	461	120
F2856	4	115/60/1	3.0	1/5	N/S	299	461	120
F2862	6	115/60/1	3.0	1/5	N/S	331	518	120
F2875	8	115/60/1	6.0	1/4	N/S	401	717	120
F2880	8	115/60/1	6.0	1/4	N/S	428	726	240
F2887	10	115/60/1	6.0	1/4	N/S	466	859	240
F2899	12	115/60/1	6.0	1/3	N/S	530	973	240
F28110	12	115/60/1	6.0	1/3	N/S	588	1143	240

MODEL NUMBER	12x20 # OF PANS	VOLTS	AMPS	H.P.	NEMA PLUG	WEIGHT	BTU LOAD	BTU SYSTEM	EVAP CAP BTU
-----------------	--------------------	-------	------	------	--------------	--------	-------------	---------------	-----------------

SELF CONTAINED

F2952C	4	115/60/1	8.0	1/5	5-15P	418	461	1727	NA
F2956C	4	115/60/1	8.0	1/5	5-15P	439	461	1727	NA
F2962C	6	115/60/1	8.0	1/5	5-15P	487	518	1727	NA
F2975C	8	115/60/1	10.0	1/4	5-15P	589	717	2341	NA
F2980C	8	115/60/1	10.0	1/4	5-15P	600	726	2341	NA
F2987C	10	115/60/1	10.0	1/4	5-15P	637	859	2341	NA
F2999C	12	115/60/1	12.0	1/3	5-15P	725	973	2341	NA
F29110C	12	115/60/1	12.0	1/3	5-15P	744	1143	2341	NA

MODEL NUMBER	NUMBER OF SHELVES	SHELF SQUARE FEET	MODEL LENGTH	WEIGHT
-----------------	----------------------	----------------------	-----------------	--------

Open Shelf Equipment Stands

F170S36	1	5.6	36" (91.4cm)	200
F170S48	1	7.6	48" (121.9cm)	250
F170S60	1	9.6	60" (152.4cm)	300
F170S72	1	11.6	72" (182.9cm)	350
F170S84	1	13.6	84" (213.4cm)	400
F170S96	1	15.7	96" (243.8cm)	475

MODEL NUMBER	NUMBER OF DRAWERS	12 X 20 X 6 PAN CAPACITY	MODEL LENGTH	WEIGHT
-----------------	----------------------	-----------------------------	-----------------	--------

Dry Drawer Equipment Stands

F17DD32	(1) 32"	2	32" (81.28cm)	290
F17DD46	(1) 19" & (1) 27"	3	46" (116.84cm)	350
F17DD54	(2) 27"	4	54" (137.16cm)	390
F17DD64	(2) 32"	4	64" (162.56cm)	430
F17DD73	(1) 19" & (2) 27"	5	73" (185.42cm)	475
F17DD81	(3) 27"	6	81" (205.74cm)	520
F17DD96	(3) 32"	6	96" (243.84cm)	600



Specifications

MODEL NUMBER	NUMBER OF PANS	NUMBER OF DRAWERS	VOLTS/HERTZ/ PHASE	AMPS	H.P.	NEMA PLUG	WEIGHT	BTU DESIGN LOAD	BTU SYSTEM CAPACITY
Self-Contained Refrigerated Base Equipment Stands									
F17C52	(2) 32"	4	115/60/1	8.0	1/5	5-15P	410	452	1727
F17C60	(2) 19" & (2) 27"	6	115/60/1	8.0	1/5	5-15P	460	556	1727
F17C68	(4) 27"	8	115/60/1	8.0	1/5	5-15P	500	632	1727
F17C78	(4) 32"	8	115/60/1	8.0	1/5	5-15P	580	726	1727
F17C87	(2) 19" & (4) 27"	10	115/60/1	10.0	1/4	5-15P	625	868	2341
F17C95	(6) 27"	12	115/60/1	10.0	1/4	5-15P	700	1001	2341
F17C110	(6) 32"	12	115/60/1	12.0	1/3	5-15P	750	1143	2341

*12" X 20" X 4" deep pans, supplied and installed by others.

MODEL NUMBER	NUMBER OF DRAWERS	PAN* CAPACITY	RECOMMENDED HP	VOLTS/HERTZ/ PHASE	AMPS		BTU DESIGN LOAD	EVAP. CAP. BTU	WEIGHT
Remote Refrigerated Base Equipment Stands									
F17R44	(2) 32"	4	1/5	115/60/1	3.0		452	120	300
F17R52	(2) 19" & (2) 27"	6	1/5	115/60/1	3.0		556	120	350
F17R60	(4) 27"	8	1/5	115/60/1	3.0		632	120	396
F17R70	(4) 32"	8	1/5	115/60/1	3.0		726	120	450
F17R79	(2) 19" & (4) 27"	10	1/4	115/60/1	6.0		868	240	525
F17R87	(6) 27"	12	1/4	115/60/1	6.0		1001	240	560
F17R102	(6) 32"	12	1/3	115/60/1	6.0		1143	240	610

*12" X 20" X 4" deep pans, supplied and installed by others.

MODEL NUMBER	NUMBER OF DRAWERS	PAN* CAPACITY	H.P.	VOLTS/HERTZ/ PHASE	AMPS	NEMA PLUG	BTU DESIGN LOAD	BTU SYSTEM CAPACITY	WEIGHT
Self-Contained Freezer Base Equipment Stands									
F17FC60	(2) 32"	4	1/2	115/60/1	12.0	5-15P	1242	1776	450
F17FC76	(2) 19" & (2) 27"	6	3/4	115/60/1	16.0	5-20P	1461	2713	600
F17FC84	(4) 27"	8	3/4	115/60/1	16.0	5-20P	1647	2713	635
F17FC94	(4) 32"	8	3/4	115/60/1	16.0	5-20P	1879	2713	710

*12" X 20" X 4" deep pans, supplied and installed by others.

MODEL NUMBER	NUMBER OF DRAWERS	PAN* CAPACITY	RECOMMENDED HP	VOLTS/HERTZ/ PHASE	AMPS		BTU DESIGN LOAD	EVAP. CAP. BTU	WEIGHT
Remote Freezer Base Equipment Stands									
F17FR48	(2) 32"	4	1/2	115/60/1	10.0		1242	160	360
F17FR58	(2) 19" & (2) 27"	6	3/4	115/60/1	10.0		1461	160	400
F17FR66	(4) 27"	8	3/4	115/60/1	10.0		1647	160	475
F17FR76	(4) 32"	8	3/4	115/60/1	10.0		1879	160	560

*12" X 20" X 4" deep pans, supplied and installed by others.

Installation

Location

This unit is intended for indoor use only. Be sure the location chosen has a floor strong enough to support the total weight of the cabinet, cooking equipment and contents. Reinforce the floor as necessary to provide for maximum loading, for complete weight chart, please refer to page 7.

Good refrigeration is based on good air circulation inside and out.

Inside cabinet: Do not pack refrigerator so full that air cannot circulate.

Outside cabinet: Be sure that the unit has access to ample air to and from the unit. If air flow is available to the rear of the unit that will help dissipate exhaust air. In the event the unit is attached to the wall mount brackets, it is important that air flow is available to the compressor compartment. Allow air flow to the bottom of the unit as well, avoid hot corners when possible. Allowing for the proper air flow and ventilation to the compressor compartment will extend the life of the compressor as well as ensure proper operation.

Cooking Equipment: WARNING! To assure proper operation a 2" airspace must be maintained between the bottom of any cooking equipment and the top of this unit. Cooking equipment must have a barrier (i.e. bottom, drip pan) between its heat source and the top of the equipment stand. Failure to comply with this could severely damage the equipment stand and void all warranties.

Leveling

A level cabinet looks better and will perform better because the drain pan will drain properly, the doors will line up with the frames properly, and the cabinet will not be subject to undue strain.

A unit on legs will have an adjustable bullet foot on each leg, adjust each for a level unit. A unit on casters will not be adjustable. Be sure the unit is on a level floor, make necessary changes to the floor for proper level.

Lock all front casters to ensure the stability of the unit.

Wall bracket installation

A wall bracket kit is supplied to secure the equipment stand to an interior wall.



CAUTION

The wall bracket must be installed properly and the equipment stand firmly secured to it before using this unit! Failure to observe this warning may result in damage to the equipment and/or injury to the operator! Never use the drawers as steps!

Do not overload the drawers or drop or throw product into the drawer pans.

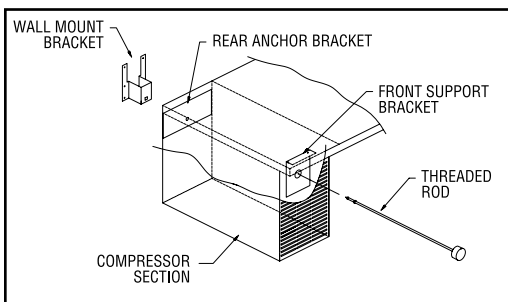


STEPS

To install the wall bracket, follow these instructions:

- 1) Place the threaded rod through the front and rear brackets in the compressor section (see diagram #1). Thread the rod into the wall bracket, making sure the longer bracket tabs are above the height of the unit.
- 2) Tighten the rod until the bracket is held snug against the back of the unit.

Diagram #1.
Installation
of wall
bracket kit
See page 9
for part #'s



3) Move the unit against the wall at the desired location.

4) Secure the wall mount bracket to the wall using the top two holes provided in the bracket tabs exposed above the unit.

The wall material must be capable of supporting a minimum load of 300 pounds (136 kilograms) in the vertical direction. All screws must be 1/4" diameter and be capable of transferring the load from the bracket to the wall.

5) Remove the threaded rod from the wall mount bracket and move the unit away from the wall, leaving the bracket attached to the wall.

6) Secure the bracket to the wall using the remaining four holes.

7) Move the unit back into place and thread the rod back into the wall mount bracket.

8) The unit should now be secured to the wall. Test the mounting by pulling on the unit and checking that all screws are tightened and the unit is firmly in place. If the unit is secured, you may now place other equipment on top of the stand and use the unit as required.



CAUTION

Never place any equipment on top of this unit without first installing the wall bracket as shown above and ensuring that the equipment is securely anchored and stable.

9) To remove the unit in order to clean behind it, first remove any equipment placed on top of the stand. Then rotate the knob on the threaded rod counter-clockwise to loosen and remove the rod from the bracket.



CAUTION

Before removing any cooking equipment (including cooking oils) from the equipment stand, allow time for the equipment to cool thoroughly. Use extreme care in moving cooking equipment.

The threaded rod must be reinstalled and tightened before returning the unit to service!

Some models are supplied on optional casters. These units must also have the wall bracket installed during use. Equipment stands have a standard marine edge top.



DANGER

Be sure all cooking equipment resting on the equipment stand is properly anchored. Consult the manufacturer's instructions for the cooking equipment to determine the proper mounting technique. It is the owner's and operator's responsibility to securely anchor cooking equipment to the equipment stand.

Plumbing

Self-contained equipment stands come standard with a condensate evaporator. If the condensate evaporator fails, the unit's drain must have an outlet to an appropriate drainage area or container.



CAUTION

Moisture collecting from improper drainage can create a slippery surface on the floor and a hazard to employees. It is the owner's and operator's responsibility to provide a container or outlet for drainage.

Installation — Continued

Electrical connection

Refer to the amperage data on page 3 & 4, the serial tag, your local code or the National Electrical Code to be sure the unit is connected to the proper power source. A protected circuit of the correct voltage and amperage must be run for connection of the line cord, or permanent connection to the unit.



The on/off switch must be turned to OFF and the unit disconnected from the power source whenever performing service, maintenance functions or cleaning the refrigerated area. Under no circumstances is a self-contained unit be operated without the louvered panel in place.

Operation: Refrigerated Base Equipment Stands

Drawer base equipment stands are designed and pre-set at the factory to maintain a temperature of 36°F to 40°F (2°C to 4°C). A solar-powered digital thermometer is located on the front of the unit to allow monitoring of the drawer housing temperature.

Pressure Control Settings

The drawer housing temperature is controlled by a pressure control located in the machine compartment.



Minor adjustments can be made to the pressure control setting by turning the knob in a clockwise direction for a colder temperature or counter clockwise for a warmer temperature. In attempting to adjust the pressure control, you can do damage to your unit by accidentally adjusting the differential. If you are uncertain of this procedure, we strongly recommend that adjustments be made by a qualified service agent. Delfield is not responsible for charges incurred while having the pressure control adjusted.

Continuous opening and closing of the drawers will hamper the unit's ability to maintain optimum refrigeration temperature. Excess weight on top of the unit will adversely affect the operation of the drawers.

The cooling coil is coated in epoxy to provide long-lasting service. However, storing all acidic items, such as peppers and tomatoes with lids that are sealable and immediately wiping up all spills of either acid or base items will greatly extend the life of your unit.



Never stand on the unit or its drawers! They are not designed to hold the weight of an adult, and may collapse or unit may tip if misused in this manner.



These units use HFC-404A refrigerant and have a lock-out high pressure limiting device. Under severe overloading conditions, in the event of a condenser fan failure or a plugged or blocked condenser, this device may shut down the refrigeration system.

Operation: Freezer Base Equipment Stands

Freezer base equipment stands are designed and pre-set at the factory to maintain a temperature of 0° F (-18° C) to -5° F (-21° C) interior cabinet temperature at 100° F (38° C) ambient room temperature. Self-contained units have a digital thermometer installed in the removable louver. The digital thermometer for remote units is located in the removable access panel.

Freezers use a Paragon time clock dial (see page 7) for automatic defrosting of the evaporator coil. See below for instructions on setting the time of day and general operating instructions.

To Set Time of Day:

Turn the knob of the Paragon time clock dial in the center of the inner (2 hour) dial and rotate it in a counter-clockwise direction. This will rotate the outer dial. Continue turning until the correct time of day on the outer dial lines up with the time pointer.

Operation of Paragon Timer:

The Paragon timer is preset at the factory to provide four defrosts per day at 6:00 am., 12:00 pm, 6:00 pm and 12:00 midnight. If it is necessary to change the number of defrosts due to unusual operating conditions it can be accomplished by placing the pins in the outer dial at the appropriate time of day that defrost initiation is desired.

When the defrost control goes into defrost, power to the condensing unit and evaporator fans is interrupted, and the defrost heater is energized. The defrost heater warms the evaporator coil thereby melting all frost accumulated during the previous refrigeration cycle. Once all frost is eliminated, the temperature of the coil continues to rise until it reaches 70°F (27°C). When this temperature is sensed by the defrost limit control, the defrost control switches to refrigeration mode.

If for any reason the timer remains in defrost for a period of time greater than 40 minutes, a back-up defrost termination is also provided.

This back-up is an integral part of the time clock and is set at the factory at 40 minutes.

It can be changed in the field as follows: push down and rotate pointer on inside (2 hour) dial until it is opposite desired time period (in minutes).

Caution: Even under the most severe operating conditions, it should not be necessary to set the back-up time greater than 60 minutes. Consult the factory if complete de-icing of the coil is not accomplished within this time period.

Pressure Control Settings

Part # 2193927

Factory recommended low-pressure control settings are:

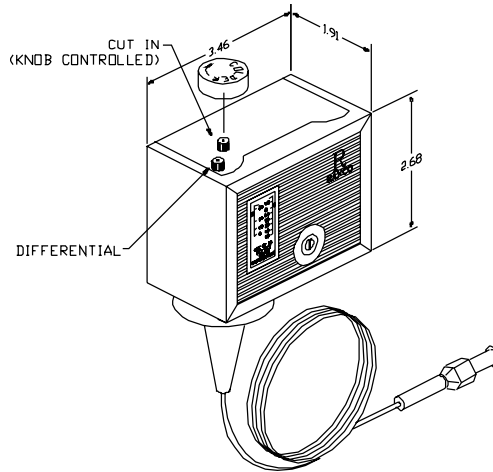
HFC-404A refrigerators: 85# cut-in and 65# cut-out to maintain approximate interior temperature of 38°F.
Differential setting of 20#.

HFC-404A freezers: 32# cut-in and 8# cut-out to maintain approximate interior temperature of 0°F to 5°F.
Differential setting of 24#.



Pressure control settings are measured in pounds, not fahrenheit.

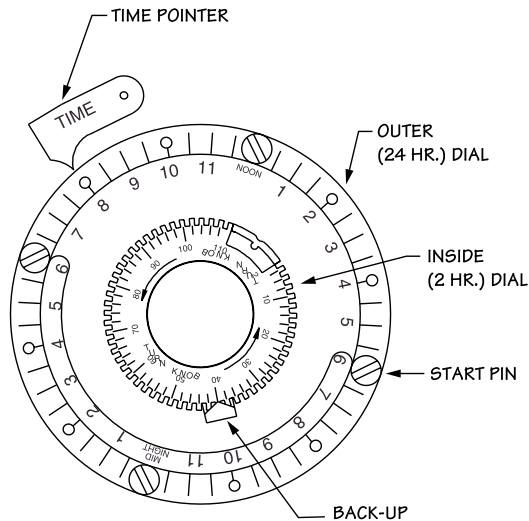
NOTE:



Paragon 8145 Time Clock Dial — used on F26 and F27, only

Part # 2194151

Note: The time clock dial is accessible by removing the larger plate of the electrical box located behind the removable louver.



CAUTION: RISK OF ELECTRICAL SHOCK
Removing of top panel or timer cover may expose live electrical parts. Disconnect power supply before servicing.



Maximum Cooking Equipment Weight Capacity

MODEL	TOTAL WEIGHT	UNIT WEIGHT	DRAWER CAPACITY	MAX COOKING EQUIPMENT WEIGHT
F2952C	1200	389	150	652
F2956C	1200	405	150	645
F2962C	1200	479	300	421
F2975C	1800	540	300	960
F2980C	1800	578	300	922
F3987C	1800	672	450	678
F2999C	1800	691	450	659
F29110C	1800	766	450	584
F2660C	1200	418	150	632
F2694C	1800	505	300	995



Care and Cleaning

Stainless Steel Care and Cleaning

To prevent discoloration of rust on stainless steel several important steps need to be taken. First, we need to understand the properties of stainless steel. Stainless steel contains 70- 80% iron, which will rust. It also contains 12-30% chromium, which forms an invisible passive film over the steels surface, which acts as a shield against corrosion. As long as the protective layer is intact, the metal is still stainless. If the film is broken or contaminated, outside elements can begin to breakdown the steel and begin to form rust or discoloration. Proper cleaning of stainless steel requires soft cloths or plastic scouring pads.

NEVER USE STEEL PADS, WIRE BRUSHES OR SCRAPERS!

Cleaning solutions need to be alkaline based or non-chloride cleaners. Any cleaner containing chlorides will damage the protective film of the stainless steel. Chlorides are also commonly found in hard water, salts, and household and industrial cleaners. If cleaners containing chlorides are used be sure to rinse repeatedly and dry thoroughly upon completion. Routine cleaning of stainless steel can be done with soap and water. Extreme stains or grease should be cleaned with a non-abrasive cleaner and plastic scrub pad. It is always good to rub with the grain of the steel. There are also stainless steel cleaners available which can restore and preserve the finish of the steels protective layer. Early signs of stainless steel breakdown can consist of small pits and cracks. If this has begun, clean thoroughly and start to apply stainless steel cleaners in attempt to restore the passivity of the steel.



Never use an acid based cleaning solution! Many food products have an acidic content, which can deteriorate the finish. Be sure to clean the stainless steel surfaces of ALL food products. Common items include, tomatoes, peppers and other vegetables.

Cleaning the Condenser Coil

The condenser coil requires regular cleaning, recommended is every 90 days. In some instances though you may find that there is a large amount of debris and dust or grease accumulated prior to the 90-day time frame. In these cases the condenser coil should be cleaned every 30 days. If the build up on the coil consists of only light dust and debris the condenser coil can be cleaned with a simple brush, heavier dust build up may require a vacuum or even compressed air to blow through the condenser coil. If heavy grease is present there are de-greasing agents available for refrigeration use and specifically for

the condenser coils. The condenser coil may require a spray with the degreasing agent and then blown through with compressed air. Failure to maintain a clean condenser coil can initially cause high temperatures and excessive run times, continuous operation with dirty or clogged condenser coils can result in compressor failures. Neglecting the condenser coil cleaning procedures will void any warranties associated with the compressor or cost to replace the compressor.



Never use a high-pressure water wash for this cleaning procedure as water can damage the electrical components located near or at the condenser coil.

In order to maintain proper refrigeration performance, the condenser fins must be cleaned of dust, dirt and grease regularly. It is recommended that this be done at least every three months. If conditions are such that the condenser is totally blocked in three months, the frequency of cleaning should be increased. Clean the condenser with a vacuum cleaner or stiff brush. If extremely dirty, a commercially available condenser cleaner may be required.

Drawer Gaskets and Slides

See page 14 for drawer assembly drawing.

Drawer gaskets should be cleaned as required to maintain their ability to seal properly. Do not use sharp tools or knives to scrape the bellows as this may tear the gasket and eliminate its ability to seal. A soft bristle brush and solution of soap and water should be all that is required to keep the gaskets clean. Do not use full strength degreasing agents on the gasket because they could cause the gasket to become brittle and crack.

The stainless steel drawer system including the drawer boxes, intermediate tracks and exterior tracks should be kept free of food and debris. The intermediate tracks (the track containing all the rollers) are designed to be removable without tools and are dishwasher safe. They can also be cleaned in a sink with detergents and a soft bristle brush. The drawer box which includes the stainless steel front and gasket are also removable without tools and should be wiped clean of food and debris. Tracks and drawer boxes should be cleaned on a daily basis for optimum performance.

Preventing Blower Coil Corrosion

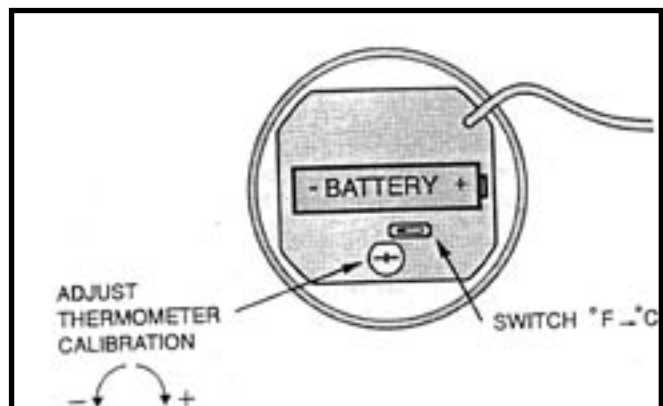
To help prevent corrosion of the blower coil, store all acidic items, such as peppers and tomatoes, in sealable containers. Immediately wipe up all spills of items.

Thermometer

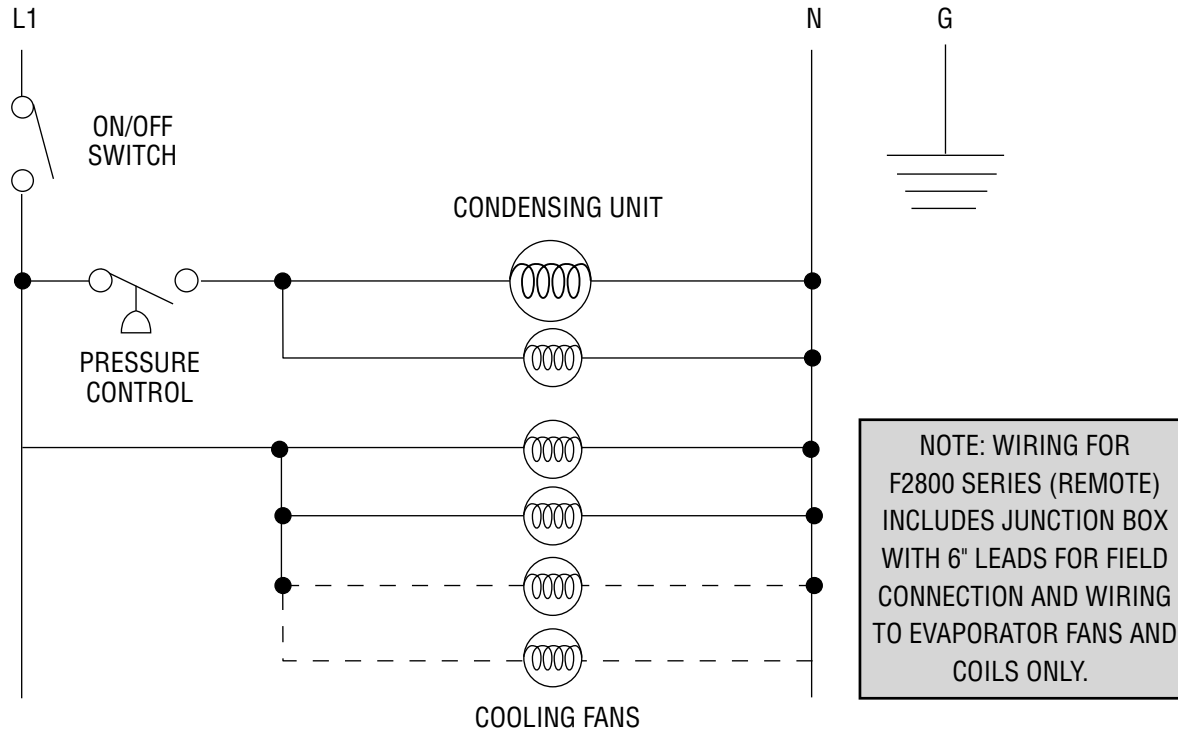
Part # 3516059

Thermometer Control Switch

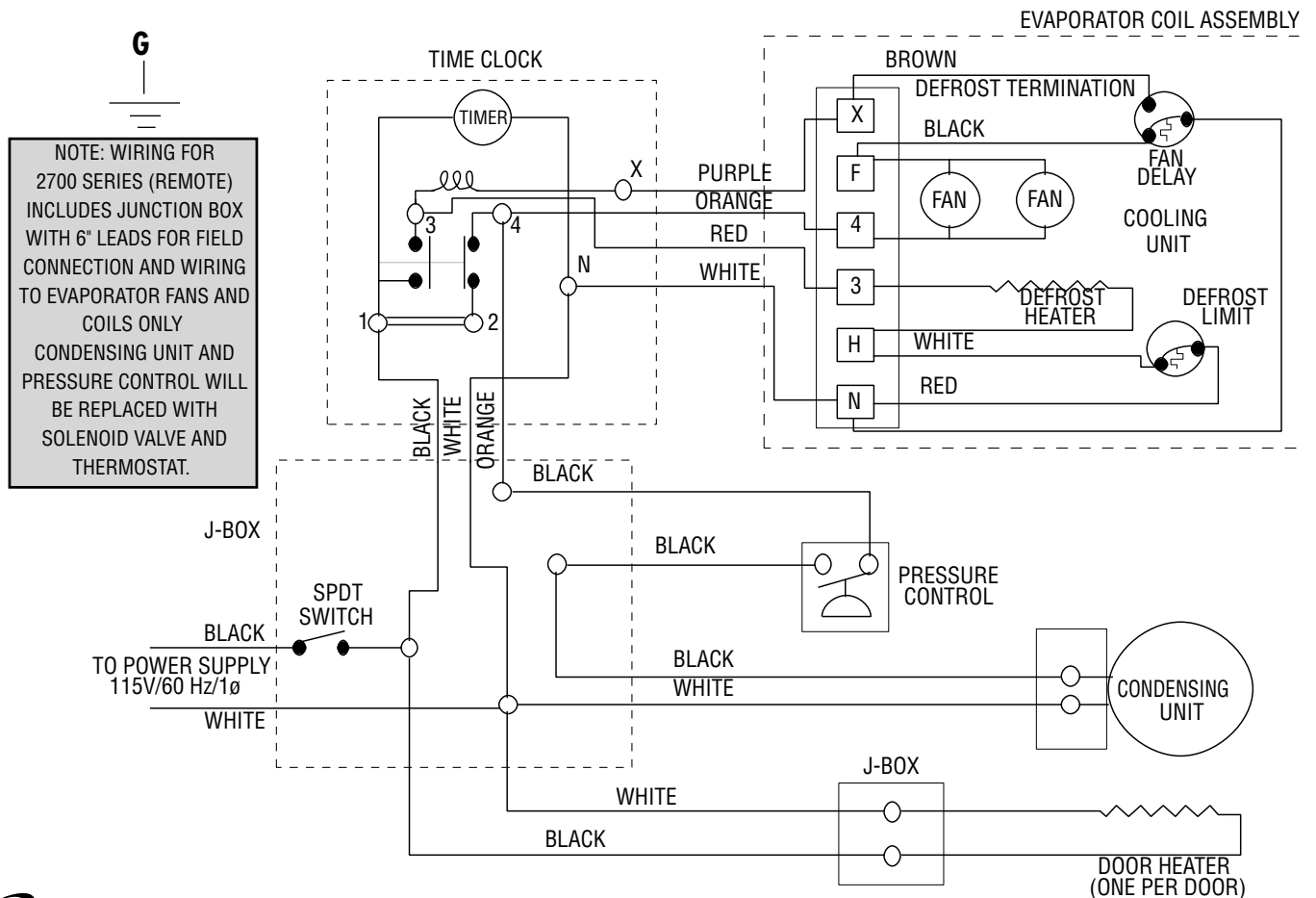
To calibrate control or switch from °F to °C follow these steps. Remove two screws and rear cover plate from thermometer. Reposition °F/°C switch to desired setting. Insert probe into an ice water bath. Ensure ice water temp is at 32°F or 0°C. Adjust calibration screw to proper display temperature. Reinstall rear cover and screws.



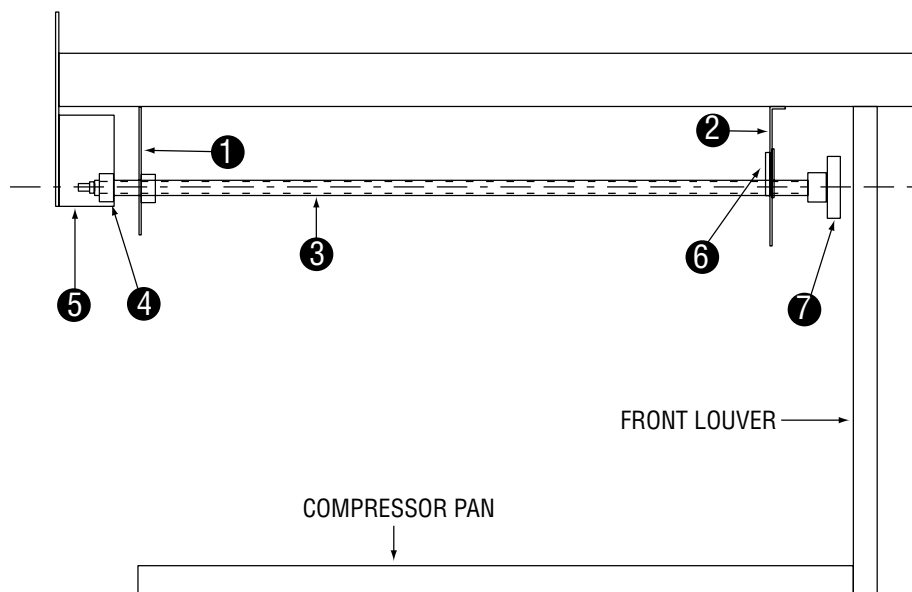
Wiring Diagram: F2900 & F17 Series Refrigerators 115V/60HZ/1PH



Wiring Diagram: F2600 & F17 Series Freezers

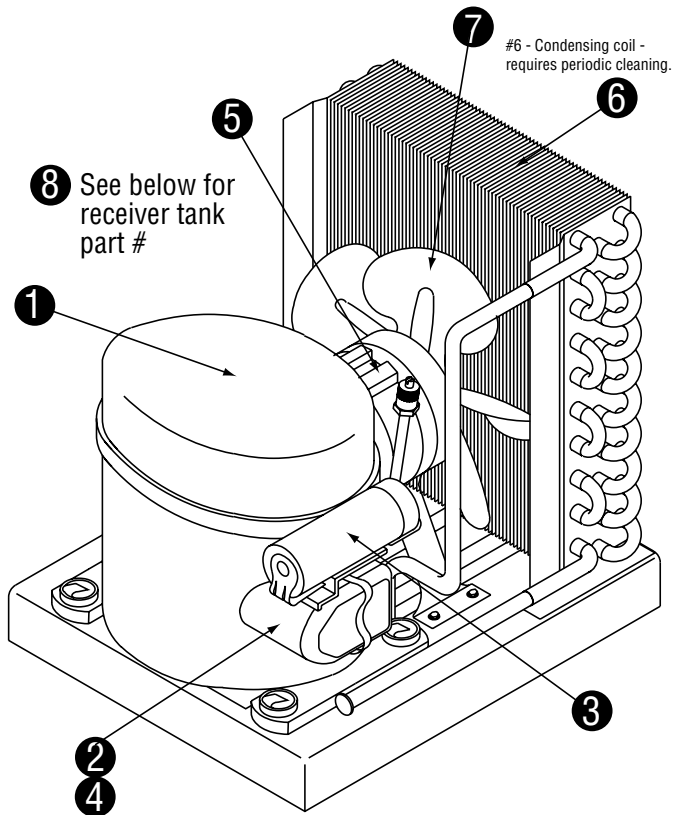


Wall Anchor Assembly



KEY	DELFIELD PART#	DESCRIPTION
1	GMK00220	Rear anchor bracket (F2660 frzr)
	GMK00221	Rear anchor bracket (F2694 frzr)
	GMK00049	Rear anchor bracket (F2700 & F2800)
	GMK00219	Rear anchor bracket (F2900 & all F17's)
2	GMK00050	Front anchor support bracket
3	9321271	Threaded rod, 1/2-13 x 27" long
4	9321312	Retainer nut, 1/2 -13
5	SMK00166	Wall mounting bracket
6	9321122	Snap bushing, 1.50"
7	3234701	Handle
Complete Wall Anchor Assembly		
	XMK00086	F2660
	XMK00087	F2694
	XMK00064	All F2700's & F2800's
	XMK00073	All F2900's & F17's

Condensing Unit Assembly



1/4 HORSE POWER

KEY	DELFIELD PART#	TECUMSEH PART#	DESCRIPTION
	3526745	AEA9422ZXAEC2C462-2	1/4 H.P. med. condensing unit
1	3526768	AE590AT-900-J7	compressor
2		820RR12E72	relay, start
3		855S165C72	capacitor
4		8300MRTN28	overload protector
5		810M006B45	motor, fan, condenser
6		50837	coil, condenser
7		51561	blade, fan
8		51080	receiver tank
Refrigerant charges — gas refrigerant 404A — 16 oz.			

Used On: F2975, F2980, F2999, F29110 and "C" models; F17C87, F17C95, F17C110, F17C68, F17C78, F2978, F2996

1/2 HORSE POWER

KEY	DELFIELD PART#	COPELAND PART#	DESCRIPTION
	3526711	FJAF-A050-IAA-201	1/2 H.P. low condensing unit
1	3526760	RS43C1E-IAA-958	compressor
2		040-0102-00	relay, current
3		014-0008-57	capacitor, starting
4		071-0329-15	overload protector
5		050-0259-10	motor, fan
6		066-0303-00	coil, condenser
7		083-0130-00	blade, fan
8		577-0346-02	receiver tank
Refrigerant charges — gas refrigerant 404A — 40 oz.			

Used On: F2660 & F17FC60

1/5 HORSE POWER

KEY	DELFIELD PART#	TECUMSEH COND. PART#	DESCRIPTION
	3526747	AEA9415ZXAEC2A540-2	1/5 H.P. med. condensing unit
1	3526762	AE570AT-907-J7	compressor
2		8200EMBJ30	relay, start
3		855S110C61	capacitor
4		8300MRTN96	overload protector
5		810M006B45	motor, fan, condenser
6		50837	coil, condenser
7		51561	blade, fan
8		51080	receiver tank
Refrigerant charges — gas refrigerant 404A — 16 oz.			

Used On: F2952, F2956, F2962 and "C" models; F17C52, & F17C60

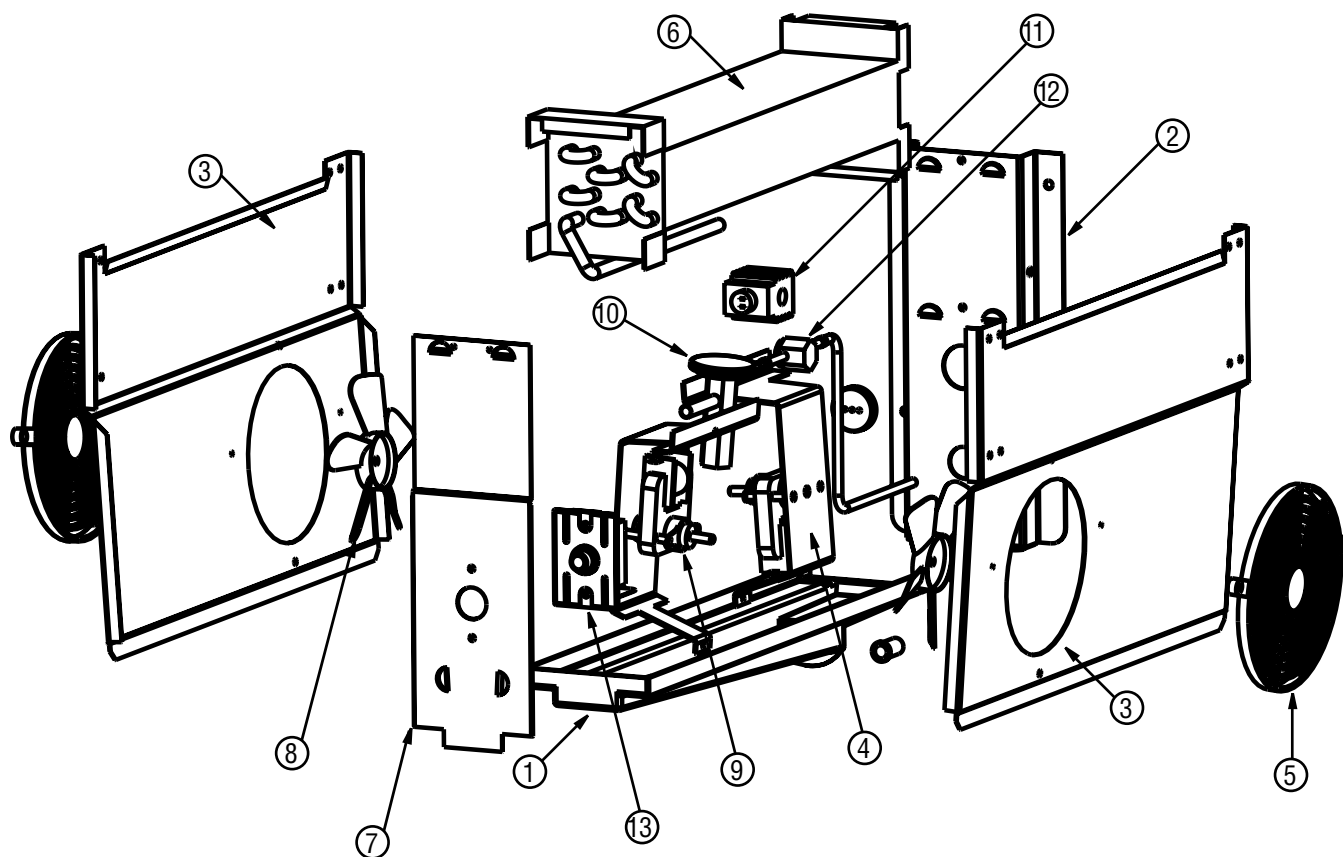
3/4 HORSE POWER

KEY	DELFIELD PART#	COPELAND PART#	DESCRIPTION
	3526712	FJAF-A075-CAA-201	3/4 H.P. low condensing unit
1	3526761	RS64C1E-CAA-959	compressor
2		040-0001-60	relay
3		014-008-74	capacitor, starting
4		071-0127-43	overload protector
5		050-0244-01	motor, fan
6		066-0304-00	coil, condenser
7		083-0102-00	blade, fan
8		577-0431-00	receiver tank
Refrigerant charges — gas refrigerant 404A — 56 oz.			

Used On: F2694, F17FC76, F17FC84 & F17FC94



Mullion Coil Assembly: Remote Refrigerators



KEY	DELFIELD PART#	DESCRIPTION
1	PMK00036	pan, drip, evap. coil, refg.
2	AMK00012	coil back
3	AMK00011	coil side
4	SMK00285	bracket, mounting, fan, evap, coil
5	3516173	guard, fan, 6.38" dia., lexan
6	3516095	coil, evap.
7	AMK00013	coil front
8	3516172	blade, fan 5.56, CCW, lexan, clear
9	2162691	motor, fan, 115V
10	3516273	valve, expansion, 1/4, hi, R-404A
11*	3516103	solenoid coil
12*	3516102	solenoid valve
13*	2194536	thermostat

* Remote units only.

XMK00107 EVAPORATOR COIL ASSEMBLY

Coil assembly is standard with above parts, less solenoid coil, solenoid valve and thermostat.

Unit: F17C and F29 Series

XMK00108 EVAPORATOR COIL ASSEMBLY

Coil assembly is standard with above parts less the thermostat.

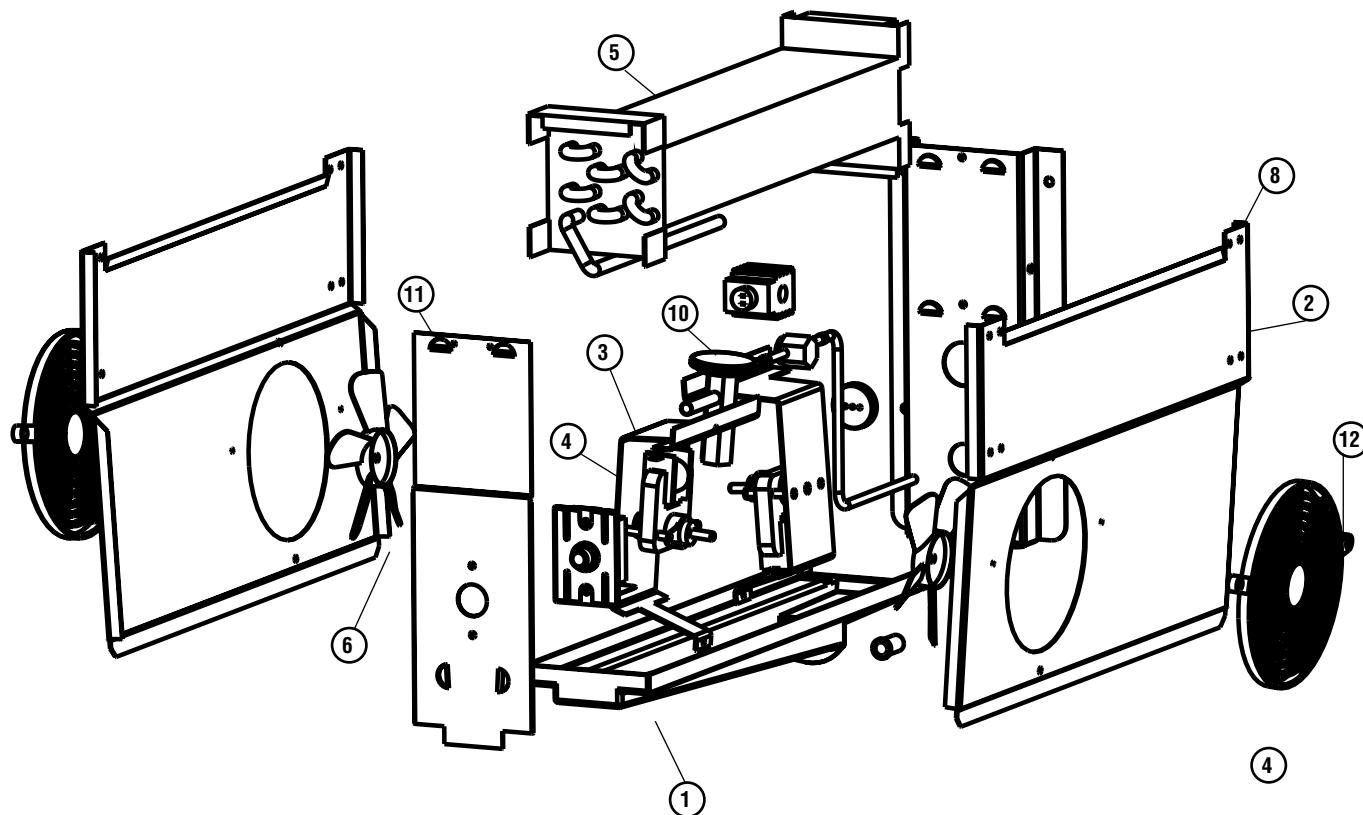
Unit: F17R102, F17R79, F17R87, F2887, F28102

XMK00109 EVAPORATOR COIL ASSEMBLY

Coil assembly is standard with above parts.

Unit: F17R and F28 Series

Mullion Coil Assembly: Self contained refrigerators



NOTE: Non-numbered items with "+" not sold separately — available only with complete assembly.

KEY	DELFIELD PART#	DESCRIPTION
1	039-231-0000	pan, drip, evap. coil, refg.
+		back coil
2	AMK00011	side, coil, w/fan
3	264-235-0000	bracket, mounting, fan, evap. coil
4	351-6173	guard, fan, 6.38" dia., lexan
5	351-6095	coil, evap.
+		front, coil
6	351-6172	blade, fan 5.56, CCW, lexan, clear
7	216-2692	motor, fan, 240V
8	932-1353	screw, #10 x 0.50,
9	218-3313	coil harness with solenoid
10	351-6273	valve, expansion, 1/4, hi, R-404A
11	932-1247	screw, machine, #10-32x37 long
12	932-1068	screw, #10 x .87"

THE FOLLOWING UNIT REQUIRES A MULLION COIL ASSEMBLY WITH SOLENOID (XMK00108):
DO000A03 (99")

Using the key and part number listing at left:

Add part# 351-6074 — solenoid coil

THE FOLLOWING UNIT REQUIRES A MULLION COIL ASSEMBLY WITH SOLENOID AND THERMOSTAT (XMK00109):
DO000A03 (99")

Using the key and part number listing at left:

Add part# 219-4224-thermostat.

Add part# 351-6103-solenoid coil.

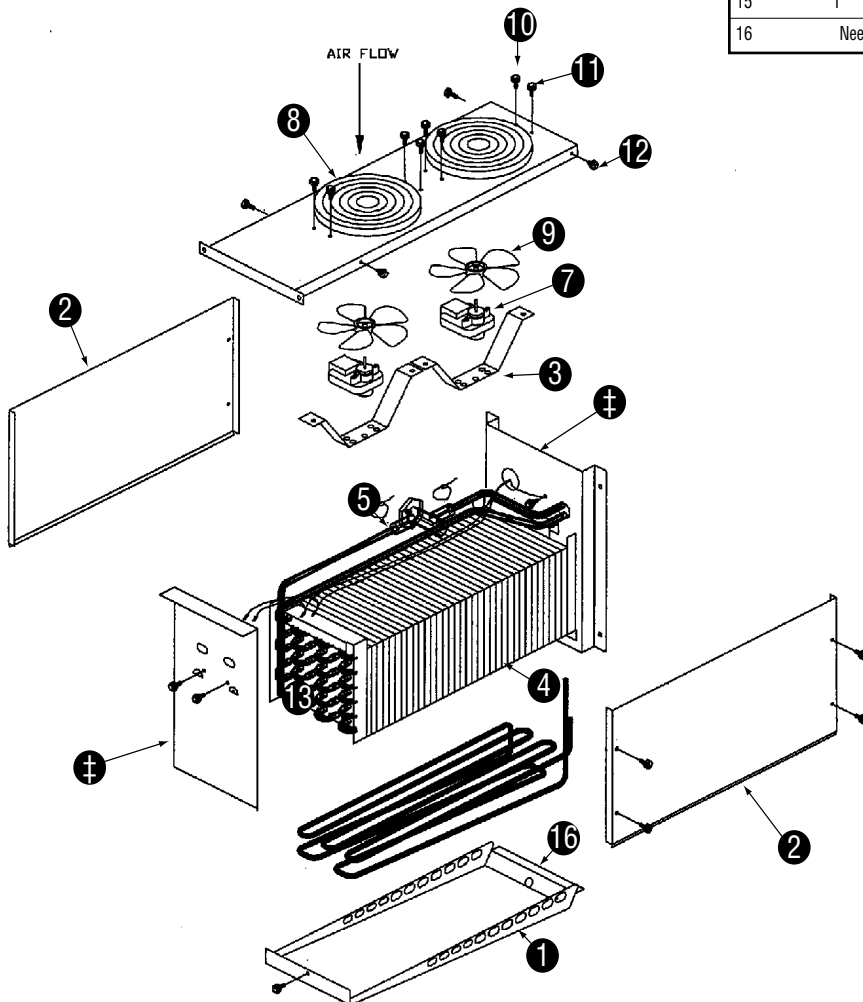
Add part# 351-6102-solenoid valve.

Mullion Coil Assembly: Freezers

Used on: F2660, F2694, F2748, F2776, F17FC60, F17FC76, F17FC84, F17FC94, F17FR48, F17FR58, F17FR66 & F17FR76

NOTE: Non-numbered items with "+" not sold separately — available only with complete assembly — XMK00061.

KEY	QUANTITY	DELFIELD PART#	DESCRIPTION
1	1	SMK00162	pan, drip, freezer mullion coil
‡	1	AMK00004	back, evap, housing
2	1	AMK00002	side, evap. HSNGL, LH
3	2	AMK00005	bracket, fan motor, blower coil
4	1	3516073	coil, evap., freezer
5	1	2194034	heater, defrost
‡	1	AMK00000	front, evap, housing
6	1	2183310	harness, coil, freezer, male
7	2	2162691	motor, fan, 115V, 50/60
8	2	3516173	guard, fan, 6.38" dia, lexan
9	2	3516172	blade, fan, 5.56, CCW, lexan
10	21	9321353	screw, #10x0.50
11	4	9321247	screw, machine, #10
12	4	9321238	screw, #8x.75
13	1	9321131	screw #10 x .50
14	1	3516271	valve, expansion, 1/4, low, R-404A
15	1	2194046	control, limit, fan delay/defrost (not shown)
16			Need to order drip pan to get 1" s/s drain (not shown)



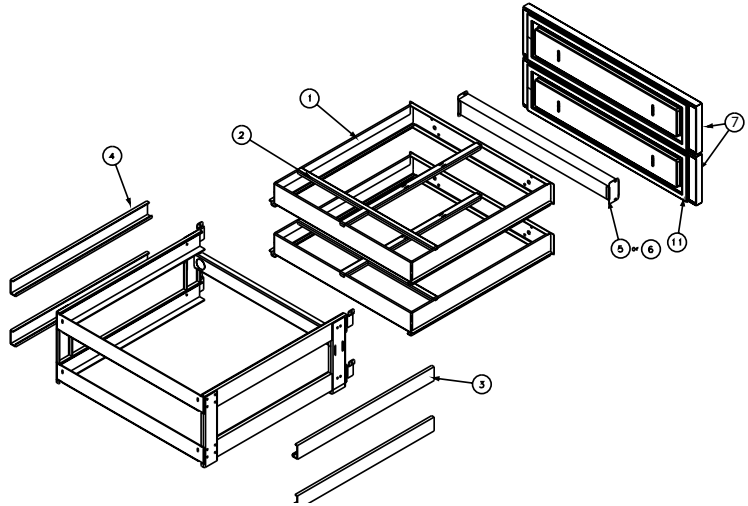
Low Profile Refrigerated Drawer Assembly (32" Shown)

Cartridge Style Drawer Systems

Complete cartridge assembly includes: cartridge, drawer boxes, drawer fronts, and mullion.

**264-018-0038: Divider bar can also be used in all drawer boxes for 1/6 size pan applications.

Note: Drawer fronts, mullions, gaskets have not changed, parts are included in Pro-E numbers only. Old part numbers are still valid for parts and service.

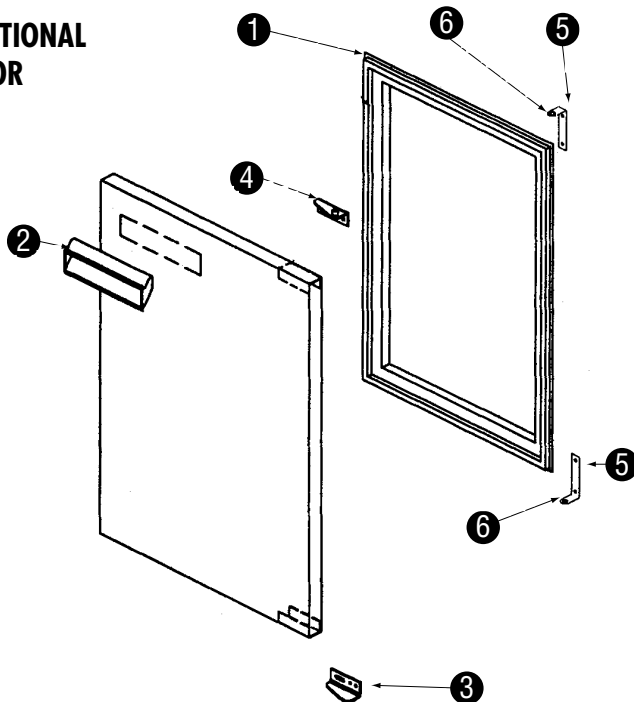


	Refrigerator *Cartridge assy	Freezer *Cartridge assy	Cartridge only (no fronts, no mullions)	1 Drawer box	2 Divider Bar(s)	3 Intermediate Left Track	4 Intermediate Right Track
32" lo profile	000-aeW-0030	000-aeW-003a	RF700100	000-333-0034	264-018-0032, 264-018-0034	3234504	3234492
27" lo profile	000-aeW-0031	000-aeW-003b	RF700101	000-333-0035	264-018-0033	3234517	3234509
24" lo profile	000-aeW-0032	000-aeW-003c	RF700102	000-333-0036	264-018-0036, 264-018-0037	3234504	3234492
19" lo profile	000-aeW-0033	000-aeW-003d	RF700103	000-333-0037	**264-018-0038	3234504	3234492

	5 Refrigerator Mullion	6 Freezer Mullion	7 Drawer front assy	8 Drawer front assy, top	9 Drawer front assy, middle	10 Drawer front assy, bottom	11 Gasket
32" low profile	000-315-0033	000-315-003b	000-328-0033	na	na	na	1701197
27" low profile	000-315-0032	000-315-003a	000-328-0032	na	na	na	1701196
24" low profile	000-315-0031	000-315-0039	000-328-0031	na	na	na	1701195
19" low profile	000-315-0030	000-315-0038	000-328-0030	na	na	na	1701194

Door Assembly: Low Profile

*OPTIONAL DOOR



Low Profile		
KEY	DELFIELD PART#	DESCRIPTION
	XMK00005	complete door assy. 19", 18.75" x 15.72"
	XMK00006	complete door assy. 24", 23.75" x 15.72"
	XMK00007	complete door assy. 27", 26.75" x 15.72"
1	1701187	gasket, door, 19"
	1701188	gasket, door, 24"
	1701189	gasket, door, 27"
2	Not replaceable	handle, snap-in, 7" (not replaceable)
3	3234214	hinge, door, top/LH, bottom/RH
4	3234218	hinge, door, top/RH, bottom/LH
5	3234391	hinge, door, L-shaped
6	9321107	bushing, nylon, hinge pin

NOTE: Indicate if door is left or right hinged when ordering.

Parts Replacement

Low Profile Freezer Bases

Models F2660, F2694, F2748, F2776

Standard Parts

000-AEW-003A	Drawer Cartridge Assembly 32"
XMK00061	Evaporator Coil Assembly
1701197	Drawer Gasket 32"
2183433	Mullion Heater
2194151	Defrost Timer
2194199	Condensate Heat Element
3234645	Leg
3234161	Caster (Optional)
3516059	Solar Digital Thermometer
XMK00065	Condensate Pan w/heater

Additional Parts

F2660

2183348	Cord/Plug Assembly
2193927	Low Pressure Control
3516101	Filter Drier
3526711	Condensing Unit 1/2HP, Low, R404A
SMK00044	Louver Assembly 18"

F2694

2183348	Cord/Plug Assembly
2193927	Low Pressure Control
3516101	Filter Drier
3526712	Condensing Unit ½ HP, Low, R404A
SMK01059	Louver Assembly 24"

Low Profile Refrigerated Bases

Models F2800 Series

Standard Parts

1701000	Cutting Board Cap
2194199	Condensate Heat Element
3234161	Caster (Optional)
3234645	Leg
3516059	Solar Digital Thermometer
9321136	Cutting Board Pin
XMK00065	Condensate Pan W/Element
XMK00109	Evaporator Coil Assembly

Additional Parts

F2844 / F2852/ F2856/ F2880

000-AEW-0030	32" Drawer Cartridge Assembly
1701197	32" Drawer Gasket

F2862

1701194	19" Drawer Gasket
1701196	27" Drawer Gasket
000-AEW-0031	27" Low Profile Drawer Cartridge Assy.
000-AEW-0033	19" Low Profile Drawer Cartridge Assy.

F2875

000-AEW-0030	32" Drawer Cartridge Assembly
1701197	32" Drawer Gasket
000-AEW-0031	27" Low Profile Drawer Cartridge Assy.
1701196	27" Drawer Gasket

F2887

1701194	19" Drawer Gasket
1701196	27" Drawer Gasket
000-AEW-0031	27" Low Profile Drawer Cartridge Assy.
000-AEW-0033	19" Low Profile Drawer Cartridge Assy.
XMK00108	Evaporator Coil Assembly

F2899

1701196	27" Drawer
000-AEW-0031	27" Low Profile Drawer Cartridge Assy.
XMK00108	Evaporator Coil Assy.

F28102/F28110

XMK00108	Evaporator Coil Assy.
1701197	32" Drawer Gasket
000-AEW-0030	32" Low Profile Drawer Cartridge Assy.
XMK00109	Evaporator Coil Assy. W/T-stat

F2900 Series

Standard Parts

1701000	Cutting Board Pin
2183348	Cord/Plug Assy.
2193927	Low Pressure Control
3234161	Caster
3234645	Leg
3516059	Digital Thermometer
3516101	Filter Drier
XMK00107	Evaporator Coil Assy.

Additional Parts

F2952/F2952C

1701197	32" Drawer Gasket
3526747	Condensing Unit, 1/5HP, R404A, Medium Temp
000-AEW-0030	32" Low Profile Drawer Cartridge Assy.
SMK00043	Louver 14"

F2956/2956C

1701197	32" Drawer Gasket
3526747	Condensing Unit, 1/5HP, R404A, Medium Temp
000-AEW-0030	32" Low Profile Drawer Cartridge Assy.
SMK00044	Louver 18"

F2962/F2962C

1701194	19" Drawer Gasket
1701196	27" Drawer Gasket
000-AEW-0031	27" Low Profile Drawer Cartridge Assy.
000-AEW-0033	19" Low Profile Drawer Cartridge Assy.
SMK01112	Louver 16"

F2975/F2975C

1701196	27" Drawer Gasket
1701197	32" Drawer Gasket
3526745	Condensing Unit ¼ HP, R404A, Medium Temp
000-AEW-0031	27" Low Profile Drawer Cartridge Assy.
000-AEW-0030	32" Low Profile Drawer Cartridge Assy.
SMK01112	Louver 16"

F2978/F2978C

1701197	32" Drawer Gasket
3526745	Condensing Unit ¼ HP, R404A, Medium Temp
000-AEW-0030	32" Low Profile Drawer Cartridge Assy.

F2980/F2980C

1701197	32" Drawer Gasket
3526745	Condensing Unit ¼ HP, R404A, Medium Temp
000-AEW-0030	32" Low Profile Drawer Cartridge Assy.
SMK01112	Louver 16"

F2987/F2987C

1701194	19" Drawer Gasket
1701196	27" Drawer Gasket
3526745	Condensing Unit ¼ HP, R404A, Medium Temp
000-AEW-0031	27" Low Profile Drawer Cartridge Assy.
000-AEW-0033	19" Low Profile Drawer Cartridge Assy.
SMK00043	Louver 14"

F2996/F2996C/F2999/F2999C

1701196	27" Drawer Gasket
3526745	Condensing Unit ¼ HP, R404A, Medium Temp
000-AEW-0031	27" Low Profile Drawer Cartridge Assy.
SMK00044	Louver 18"

F29110/F29110C

1701197	32" Drawer Gasket
3526745	Condensing Unit ¼ HP, R404A, Medium Temp
000-AEW-0030	32" Low Profile Drawer Cartridge Assy.
SMK00043	Louver 14"

F17C Series

Standard Parts

1701000	Cutting Board Pin Cap
2183348	Cord/Plug Assembly
2193927	Low Pressure Control
3234161	Caster (Optional)
3234645	Leg
3516059	Digital Thermometer
3516101	Filter Drier
9321136	Pin For Cutting Board
XMK00107	Evaporator Coil Assembly
XMK00135	Cutting Board Bracket Assy, Left Hand
XMK00136	Cutting Board Bracket Assy, Right Hand
SMK00043	Louver 14"

Additional Parts

F17C52

1701197	32" Drawer Gasket
3526747	Condensing Unit, 1/5 HP, R404A, Medium Temp
000-AEW-0030	32" Low Profile Drawer Cartridge Assy.

F17C60

1701196	27" Drawer Gasket
1701194	19" Drawer Gasket
3526747	Condensing Unit, 1/5 HP, R404A, Medium Temp

F17C68

000-AEW-0031	27" Low Profile Drawer Cartridge Assy.
1701196	27" Drawer Gasket
3526745	Condensing Unit, ¼ HP, R404A, Medium Temp
000-AEW-0031	27" Low Profile Drawer Cartridge Assy.
000-AEW-0033	19" Low Profile Drawer Cartridge Assy.

F17C78

1701197	32" Drawer Gasket
3526745	Condensing Unit, ¼ HP, R404A, Medium Temp
000-AEW-0030	32" Low Profile Drawer Cartridge Assy.

F17C87

1701194	19" Drawer Gasket
1701196	27" Drawer Gasket
3526745	Condensing Unit, ¼ HP, R404A, Medium Temp
000-AEW-0031	27" Low Profile Drawer Cartridge Assy.
000-AEW-0033	19" Low Profile Drawer Cartridge Assy.

F17C95

1701196	27" Drawer Gasket
3526745	Condensing Unit, ¼ HP, R404A, Medium Temp
000-AEW-0031	27" Low Profile Drawer Cartridge Assy.

F17C110

1701197	32" Drawer Gasket
3526745	Condensing Unit, ¼ HP, R404A, Medium Temp
000-AEW-0030	32" Low Profile Drawer Cartridge Assy.

F17FC Series

Standard Parts

2183433	Mullion Heater
2183348	Cord/Plug Assembly
2193927	Low Pressure Control
2194151	Defrost Timer
2194199	Condensate Heat Element
3234161	Caster (Optional)
3234645	Leg
3516059	Digital Thermometer
3516101	Filter Drier
XMK00061	Freezer Evaporator Coil Assy.
XMK00065	Condensate Pan W/Element
XMK00135	Cutting Board Bracket Assy, Left Hand
XMK00136	Cutting Board Bracket Assy, Right Hand

Parts Replacement - continued

Additional Parts

F17FC60

3526711	Condensing Unit, ½ HP, Low, R404A
000-AEW-003A	Drawer Gasket
SMK00044	Louver 18"

F17FC76

1701196	27" Drawer Gasket
1701194	19" Drawer Gasket
2183432	Heater Mullion D 19"
3526712	Condensing Unit, ¾ HP, Low, R404A
000-AEW-003B	Drawer Cartridge Assembly 27"
000-AEW-003D	Drawer Cartridge Assembly 19"
SMK01059	Louver 24"

F17FC84

1701196	27" Drawer Gasket
3526712	Condensing Unit ¾ HP, Low, R404A
000-AEW-003B	Drawer Cartridge Assembly 27"
SMK01059	Louver 24"

F17FC94

1701197	Drawer Gasket
3526712	Condensing Unit ¾ HP, Low, R404A
000-AEW-003A	Drawer Cartridge Assembly 32"
SMK01059	Louver 24"

F17R Series

Standard Parts

3234161	Caster (Optional)
3234645	Leg
3516059	Digital Thermometer
XMK00109	Evaporator Coil Assembly
XMK00135	Cutting Board Bracket Assy. Left
XMK00136	Cutting Board Bracket Assy. Right

Additional Parts

F17R44

1701197	32" Drawer Gasket
000-AEW-0030	32" Low Profile Drawer Cartridge Assy.

F17R52

1701194	19" Drawer Gasket
1701196	27" Drawer Gasket
000-AEW-0031	27" Low Profile Drawer Cartridge Assy.
000-AEW-0033	19" Low Profile Drawer Cartridge Assy.

F17R60

1701196	27" Drawer Gasket
000-AEW-0031	27" Low Profile Drawer Cartridge Assy.

F17R70

1701197	32" Drawer Gasket
000-AEW-0030	32" Low Profile Drawer Cartridge Assembly

F17R79

1701194	19" Drawer Gasket
1701196	27" Drawer Gasket
000-AEW-0031	27" Low Profile Drawer Cartridge Assy.
000-AEW-0033	19" Low Profile Drawer Cartridge Assy.
XMK00108	Coil Assembly W/Solenoid

F17R87

1701196	27" Drawer Gasket
000-AEW-0031	27" Low Profile Drawer Cartridge Assy.
XMK00108	Coil Assembly W/Solenoid

F17R102

1701197	32" Drawer Gasket
000-AEW-0030	32" Low Profile Drawer Cartridge Assy.
XMK00108	Coil Assembly W/Solenoid

Standard Parts

F17FR Series

2183433	Mullion Heater 19"
2194151	Defrost Timer
2194199	Condensate Heat Element
3234161	Caster (Optional)
3234645	Leg
3516059	Solar Digital Thermometer
XMK00061	Freezer Coil Assembly
XMK00065	Condensate Pan w/element
XMK00135	Cutting Board Bracket Assy., Right Hand

Additional Parts

F17FR48

1701197	Drawer Gasket 32"
000-AEW-003A	Drawer Cartridge Assy. 32"

F17FR58

1701194	19" Drawer Gasket
1701196	27" Drawer Gasket
2183432	Mullion Heater 19"
000-AEW-003B	Drawer Cartridge Assy. 27"
000-AEW-003D	Drawer Cartridge Assy. 19"

F17FR66

1701196	27" Drawer Gasket
000-AEW-003B	Drawer Cartridge Assy. 27"

F17FR76

1701197	Drawer Gasket 32"
000-AEW-003A	Drawer Cartridge Assy. 32"

F17DD Series

Standard Parts

3234645	Leg
3234161	Caster (Optional)

Additional Parts

F17DD32

000-188-0037	32" Single Dry Drawer Assy
--------------	----------------------------

F17DD46

000-188-0034	19" Single Dry Drawer Assy
000-188-0037	32" Single Dry Drawer Assy

F17DD54

000-188-0036	32" Single Dry Drawer Assy
--------------	----------------------------

F17DD64

000-188-0037	32" Single Dry Drawer Assy
--------------	----------------------------

F17DD73

000-188-0034	19" Single Dry Drawer Assy
000-188-0036	27" Single Dry Drawer Assy

F17DD81

000-188-0036	27" Single Dry Drawer Assy
--------------	----------------------------

F17DD96

000-188-0037	32" Single Dry Drawer Assy
--------------	----------------------------

F170S Series

Standard Parts

3234645	Leg
3234161	Caster (Optional)

Cutting board 1 1/4 x 9 1/2 wide, call factory with required length for price quote.

STANDARD WARRANTY - One year parts, 90 days labor.

The Delfield Company ("Delfield") warrants to the Original Purchaser of the Delfield product (herein called the "Unit") that such Unit, and all parts thereof, will be free from defects in material and workmanship under normal use and service for a period of one (1) year from the date of shipment of the Unit to the Original Purchaser **or, if the Original Purchaser returns the warranty card completely filled out including the date of installation within thirty (30) days of receipt of the Unit, one (1) year from the date of installation.** During this one year warranty period, Delfield will repair or replace any defective part or portion thereof returned to Delfield by the Original Purchaser which Delfield determines was defective due to faulty material or workmanship. The Original purchaser will pay all labor, crating, freight and related costs incurred in the removal of the Unit of defective component and shipment to Delfield, except that during a period of either ninety (90) days from the date of shipment of the Unit to the Original Purchaser or, if the Original Purchaser returns the warranty card completely filled out including the date of installation within thirty (30) days of receipt of the Unit, ninety (90) days from the date of installation Delfield will pay all related labor costs. Delfield will pay the return costs if the Unit or part thereof was defective.

The term "Original Purchaser" as used herein means that person, firm, association, or corporation for whom the Unit was originally installed.

This warranty does not apply to any Unit or part thereof that has been subjected to misuse, neglect, alteration, or accident, such as accidental damage to the exterior finish, operated contrary to the recommendations specified by Delfield; or repaired or altered by anyone other than Delfield in any way so as to, in Delfield's sole judgement, affect its quality or efficiency. This warranty does not apply to any Unit that has been moved from the location where it was originally installed. This warranty also does not cover the refrigerator drier or the light bulbs used in the Unit. **The warranty is subject to the user's normal maintenance and care responsibility as set forth in the Service and Installation Manual, such as cleaning the condenser coil, and is in lieu of all other obligations of Delfield. Delfield neither assumes, nor authorizes any other person to assume for Delfield, any other liability in connection with Delfield's products.**

Removal or defacement of the original Serial Number or Model Number from any Unit shall be deemed to release Delfield from all obligations hereunder or any other obligations, express or implied.

Parts furnished by suppliers to Delfield are guaranteed by Delfield only to the extent of the original manufacturer's express warranty to Delfield. Failure of the Original Purchaser to receive such manufacturer's express warranty to Delfield. Failure of the Original Purchaser to receive such manufacturer's warranty shall in no way create any warranty, expressed or implied, or any other obligation or liability on Delfield's part in respect thereof.

If shipment of a replacement part is requested prior to the arrival in the Delfield factory of the part claimed to be defective, the Original Purchaser must accept delivery of the replacement part of a C.O.D. basis, with credit being issued after the part has been received and inspected at Delfield's plant and determined by Delfield to be within this warranty.

Under no condition does this warranty give the Original Purchaser

the right to replace the defective Unit with a complete Unit of the same manufacturer or of another make. Unless authorized by Delfield in writing, this warranty does not permit the replacement of any part, including the motor-compressor, to be made with the part of another make or manufacturer.

No claims can be made under this warranty for spoilage of any products for any reason, including system failure.

The installation contractor shall be responsible for building access, entrance and field conditions to insure sufficient clearance to allow any hood(s), vent(s), or Unit(s) if necessary, to be brought into the building. Delfield will not be responsible for structural changes or damages incurred during installation of the Unit or any exhaust system.

Delfield shall not be liable in any manner for any default or delay in performance hereunder caused by or resulting from any contingency beyond Delfield's control, including, but not limited to, war, governmental restrictions or restraints, strike, lockouts, injunctions, fire, flood, acts of nature, short or reduced supply of raw materials, or discontinuance of the parts by the original part manufacturer.

Except as provided in any Additional Four Year Protection Plan, if applicable, and the Service Labor Contract, if applicable, the foregoing is exclusive and in lieu of all other warranties, whether written or oral, express or implied. This warranty supersedes and excludes any prior oral or written representations or warranties. Delfield expressly disclaims any implied warranties of merchantability, fitness for a particular purpose of compliance with any law, treaty, rule or regulation relating to the discharge of substances into the environment. The sole and exclusive remedies of any person relating to the Unit, and the full liability of Delfield for any breach of this warranty, will be as provided in this warranty.

Other than this Delfield Standard One Year Limited Warranty, any applicable Delfield Additional Four Year Protection Plan or applicable Delfield Service Labor Contract, the Original Purchaser agrees and acknowledges that no other warranties are offered or provided in connection with or for the unit or any other part thereof.

In no event will Delfield be liable for special, incidental or consequential damages, or for damages in the nature of penalties.

ADDITIONAL FOUR YEAR PROTECTION PLAN - For motor compressor only.

In addition to the Standard One Year Warranty on the Motor-Compressor contained in the above listed Delfield product (the "Unit"), The Delfield Company ("Delfield") also agrees to repair, or exchange with similar or interchangeable parts in design and capacity at Delfield's option, the defective Motor-Compressor contained in the Unit (the "Motor-Compressor"), or any part thereof, for the Original Purchaser only, at any time during the four (4) years following the initial one (1) year period commencing on the date of installation for the Original Purchaser. **Failure of the Original Purchaser to register the registration card containing the Original Purchaser's name, address, date of installation, model number and serial number of the Unit containing the Motor-Compressor within 30 days from the date of installation shall void this warranty.** This additional warranty is only available if the Motor-Compressor is inoperative due to defects in material or factory workmanship, as determined by Delfield in its sole judgement and discretion. The Original Purchaser shall be responsible for returning the defective Motor-Compressor to Delfield prepaid, F.O.B. at the address shown on the back cover of this manual.

The term "Original Purchaser" as used herein means that person, firm, association, or corporation for whom the Unit was originally installed.

The term "Motor-Compressor" as used herein does not include unit base, air or water cooled condenser, receiver, electrical accessories such as relay, capacitors, refrigerant controls, or condenser fan/motor assembly. This warranty does not cover labor charges incidental to the replacement of parts. This warranty further does not include any equipment to which said condensing unit is connected, such as cooling coils, temperature controls or refrigerant metering devices. This warranty shall be void if the Motor-Compressor, in Delfield's sole judgement, has been subjected to misuse, neglect, alteration or accident, operated contrary to the recommendations specified by the Unit manufacturer, repaired or altered by anyone other than Delfield in any way so as, in Delfield's sole judgment, to affect its quality or efficiency or if the serial number has been altered, defaced or removed. This Warranty does not apply to a Motor-Compressor in any Unit that has been moved from the location where it was originally installed. The addition of methyl chloride to the condensing unit or refrigeration system shall void this warranty.

General Conditions

Delfield shall not be liable in any manner for any default or delay in performance hereunder caused by or resulting from any contingency beyond Delfield's control, including, but not limited to, war, governmental restrictions or restraints, strike, lockouts, injunctions, fire, flood, acts of nature, short or reduced supply of raw materials, or discontinuance of any part or the Motor-Compressor by the unit manufacturer.

Replacement of a defective Motor-Compressor is limited to one (1)

Motor-Compressor by us during the four (4) year period. Delfield shall replace the Motor-Compressor at no charge.

This warranty does not give the Original Purchaser of the Motor-Compressor the right to purchase a complete replacement Motor-Compressor of the same make or of another make. It further does not permit the replacement to be made with a Motor-Compressor of another kind unless authorized by Delfield. In the event Delfield authorizes the Original Purchaser to purchase a replacement Motor-Compressor locally, only the wholesale cost of the Motor-Compressor is refundable.

Expressly excluded from this warranty are damages resulting from spoilage of goods.

Except as provided in any applicable Standard One Year Limited Warranty or applicable Service Labor Contract, the foregoing is exclusive and in lieu of all other warranties, whether written or oral, express or implied. This Warranty supersedes and excludes any prior oral or written representations or warranties. Delfield expressly disclaims any implied warranties of merchantability, fitness for a particular purpose or compliance with any law, treaty, rule or regulation relating to the Motor-Compressor, and the full liability of Delfield for any breach of this warranty, will be as provided in this warranty.

Other than any applicable Delfield Standard One year Limited Warranty, this Delfield Additional Four Year Protection Plan and any applicable Delfield Service Labor Contract, the Original Purchaser agrees and acknowledges that no other warranties are offered or provided in connection with or for the Motor-Compressor or any part thereof.

In no event will Delfield be liable for special, incidental or consequential damages, or for damages in the nature of penalties.



DRAWER WARRANTY - One/ Ten Year Parts * 90 Day labor

The Delfield Company ("Delfield") warrants to the Original Purchaser of the Delfield drawer system (herein called the "Unit") that such Unit, and all parts thereof, will be free from defects in material and workmanship under normal use and service for a period of one (1) year from the date of shipment of the Unit to the Original Purchaser or, if the Original Purchaser returns the warranty card completely filled out including the date of installation within thirty (30) days of receipt of the Unit, one (1) year from the date of installation. In addition, Delfield warrants the left and right intermediate track deemed the "Roller track assembly" profiles, this is the part that contains all the Delrin rollers for ten years. These are the only parts falling under the 10 year warranty. During this one year warranty period, Delfield will repair or replace any defective part or portion thereof returned to Delfield by the Original Purchaser which Delfield determines was defective due to faulty material or workmanship. The Original Purchaser will pay all labor, crating, freight and related costs incurred in the removal of the Unit or defective component and shipment to Delfield, except that during a period of either ninety (90) days from the date of shipment of the Unit to the Original Purchaser or, if the Original Purchaser returns the warranty card completely filled out including the date of installation within thirty (30) days of receipt of the Unit, ninety (90) days from the date of installation Delfield will pay all related labor costs. Delfield will pay the return costs if the Unit or part thereof was defective.

The term "Original Purchaser" as used herein means that person, firm, association, or corporation for whom the Unit was originally installed.

This Warranty does not apply to any Unit or part hereof that has been subjected to misuse, neglect, alteration, or accident, such as accidental damage to the exterior finish; operated contrary to the recommendations specified by Delfield; or repaired or altered by anyone other than Delfield in any way so as to, in Delfield's sole judgment, affect its quality or efficiency. This Warranty does not apply to any Unit that has been moved from the location where it was originally installed. The warranty is subject to the user's normal maintenance and care responsibility as set forth in the Service and Installation Manual. Delfield neither assumes, nor authorizes any other person to assume for Delfield, any other liability in connection with Delfield's products.

Removal or defacement of the original Serial Number or Model Number from any Unit shall be deemed to release Delfield from all obligations hereunder or any other obligations, express or implied.

Parts furnished by suppliers to Delfield are guaranteed by Delfield only to the extent of the original manufacturer's express warranty to Delfield. Failure of the Original Purchaser to receive such manufacturer's warranty shall in no way create any warranty, express or implied, or any other obligation or liability on Delfield's part in respect thereof.

If shipment of a replacement part is requested prior to the arrival in the Delfield factory of the part claimed to be defective, Delfield will send a UPS call tag to the customer to receive damaged or defective parts back for inspection. Delfield must receive the parts back to redeem warranty coverage from Fulterer. It is also very important to receive these parts to determine if any future change to the design is needed.

Under no condition does this Warranty give the Original Purchaser the right to replace the defective Unit with a complete Unit of the same manufacturer or of another make. Unless authorized by Delfield in writing, this Warranty does not permit the replacement of any part to be made with the part of another make or manufacturer.

No claims can be made under this Warranty for spoilage of products for any reason, including system failure.

Delfield shall not be liable in any manner for any default or delay in performance hereunder caused by or resulting from any contingency beyond Delfield's control, including, but not limited to, war, governmental restrictions or restraints, strikes, lockouts, injunctions, fire, floods, acts of nature, short or reduced supply of raw materials, or discontinuance of the parts by the original part manufacturer.

Except as provided in any Additional Four Year Protection Plan, if applicable, and the Service Labor Contract, if applicable, the foregoing is exclusive and in lieu of all other warranties, whether written or oral, express or implied. This Warranty supersedes and excludes any prior oral or written representations or warranties. Delfield expressly disclaims any implied warranties of merchantability, fitness for a particular purpose or compliance with any law, treaty, rule or regulation relating to the discharge of substances into the environment. The sole and exclusive remedies of any person relating to the Unit, and the full liability of Delfield for any breach of this Warranty, will be as provided in this Warranty.

Other than this Delfield Standard One Year Limited Warranty, any applicable Delfield Additional Four Year Protection Plan or applicable Delfield Service Labor Contract, the Original Purchaser agrees and acknowledges that no other warranties are offered or provided in connection with or for the Unit or any part thereof.

In no event will Delfield be liable for special, incidental or consequential damages, or for damages in the nature of penalties.

Notes:

Notes:

Notes:



Mt. Pleasant, MI



Covington, TN

Thank you for choosing Delfield!

Help is a phone call away! Help our team of professional, courteous customer service reps by having your model number and serial number available at the time of your call (800) 733-8829

Model: _____ S/N: _____

Installation Date: _____



**For a list of Delfield's authorized parts depots,
visit our website at
www.delfield.com**



980 S. Isabella Rd., Mt. Pleasant, MI 48858, U.S.A. • (989) 773-7981 or (800) 733-8829 • Fax (989) 773-3210 • www.delfield.com
Delfield reserves the right to make changes in design or specifications without prior notice. ©2005 The Delfield Company. All rights reserved. Printed in the U.S.A.