



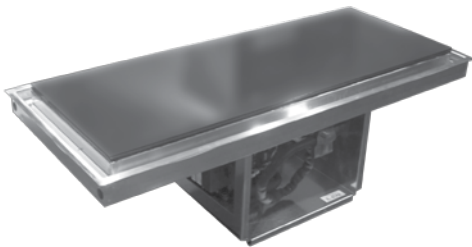
N8200G

Drop-in Self-Contained Granite Cold Slab

Project _____
Item _____
Quantity _____
CSI Section 11400
Approved _____
Date _____

Models

- N8231G 31" granite cold slab
- N8245G 45" granite cold slab
- N8259G 59" granite cold slab
- N8273G 73" granite cold slab



N8259G

Standard Features

- "Absolute Black" granite top on 14-gauge stainless steel
- Thermal mastic heat transfer compound between granite and stainless steel
- High density environmentally friendly, Kyoto Protocol Compliant, Non ODP (Ozone Depletion Potential), Non GWP (Global Warming Potential) polyurethane foam
- On/Off switch located on compressor
- Stainless steel louver provided standard
- Environmentally friendly HFC-404A refrigerant
- 1.5" deep trough around perimeter with 3/4" stainless steel drain
- 8' electrical cord is standard

Options & Accessories

- Relocate compressor left or right
- 220V/50C electrical
- Single or double service sneezeguards
- Remote refrigeration

Specifications

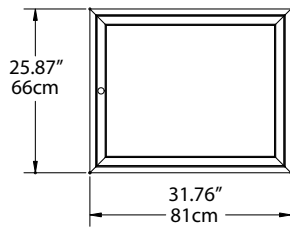
Top: Top is constructed of 14-gauge stainless steel with 3/4" "Absolute Black" granite installed. Thermal mastic heat transfer compound is applied between the stainless steel and granite. Top is mechanically cooled with high density environmentally friendly, Kyoto Protocol Compliant, Non ODP (Ozone Depletion Potential), Non GWP (Global Warming Potential) polyurethane foam throughout.

Body: 24-gauge galvanized steel. Compressor suspends below top on 16-gauge galvanized frame.

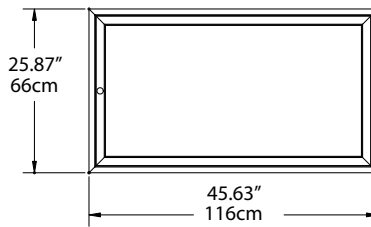
Refrigeration system: Unit uses environmentally friendly HFC-404A refrigerant. Refrigeration lines run in a serpentine pattern under stainless steel top with expansion valve as metering device. Unit is equipped with on/off switch.

Electrical connections: 115V, 60Hz single phase. Unit is wired with 3-wire, grounded, maximum. Standard with 8' (2.4m) cord and plug.

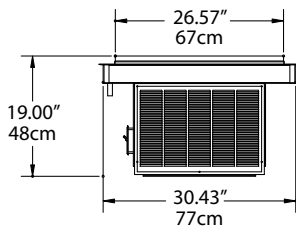




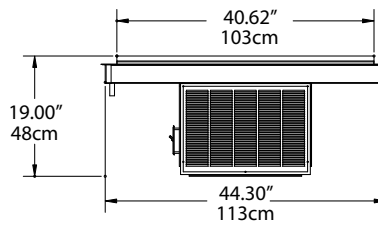
Plan View
N8231G



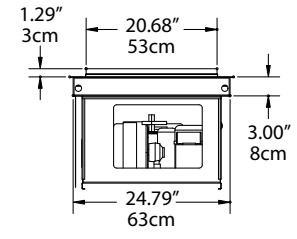
Plan View
N8245G



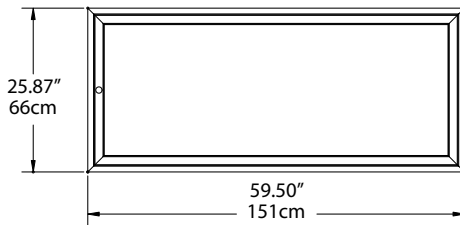
Elevation View
N8231G



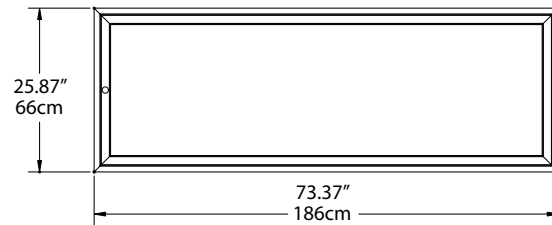
Elevation View
N8245G



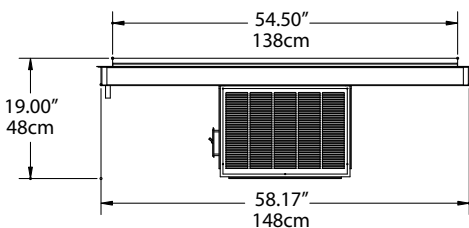
End View
All Models



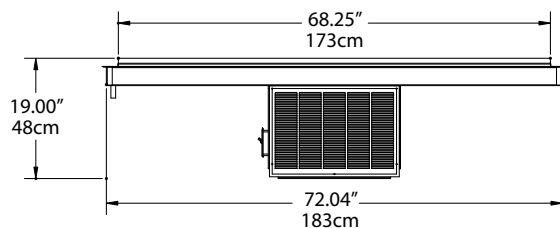
Plan View
N8259G



Plan View
N8273G



Elevation View
N8259G



Elevation View
N8273G

Specifications

Model	Cutout Size	H.P.	V/Hz/Ph	Amps	Nema Plug	Ship Weight
N8231G	30.75" X 25.00" (78cm X 64cm)	1/4	115/60/1	7.0	5-15P	220lbs/100kg
N8245G	44.63" X 25.00" (113cm X 64cm)	1/4	115/60/1	7.0	5-15P	288lbs/131kg
N8259G	58.50" X 25.00" (149cm X 64cm)	1/3	115/60/1	8.0	5-15P	336lbs/152kg
N8273G	72.38" X 25.00" (184cm X 64cm)	1/2	115/60/1	9.0	5-15P	424lbs/192kg

Delfield reserves the right to make changes to the design or specifications without prior notice.