



F13WR

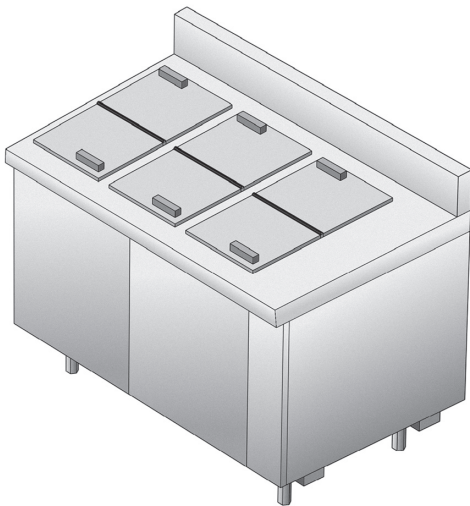
31.5" (80cm) Deep Remote Low Temp, Ice Cream Cabinets

Project _____
 Item _____
 Quantity _____
 CSI Section 11400
 Approved _____
 Date _____

F13WR: 31.5" (80cm) Deep Remote Low Temp, Ice Cream Cabinets

Models

- F13WR24 - 12 gallon capacity remote ice cream cabinet without syrup rail
- F13WR36 - 24 gallon capacity remote ice cream cabinet without syrup rail
- F13WR48 - 36 gallon capacity remote ice cream cabinet without syrup rail
- F13WR60 - 48 gallon capacity remote ice cream cabinet without syrup rail



F13WR48

Standard Features

- Units are standard with unfinished ends
- 16-gauge stainless steel top construction
- 36" standard work height
- High-density environmentally friendly, Kyoto Protocol Compliant, Non ODP (Ozone Depletion Potential), Non GWP (Global Warming Potential) polyurethane foam throughout unit
- Ice cream tank is constructed of 2BF stainless steel with large clean out covered bottom
- 0°F tank storage temperatures
- Folding removable cover with black rubber external handle for easy grip
- Unit has two 14-gauge leg rails that run the entire length of the unit
- 6.12" adjustable full stainless steel legs and bullet feet
- Standard with all controls necessary for hook up
- Environmentally friendly HFC-404A refrigerant
- One year parts and 90 day labor standard warranty

Options & Accessories

- Stainless steel back
- Stainless steel end
- Laminate facing
- Laminate back
- Laminate end

Specifications

Top is constructed of one-piece 16-gauge stainless steel, with integral 2.12" (5cm) square nosing on front and 4.00" (10cm) high by 2.00" (5cm) thick backsplash on rear. Top to be insulated and have raised rim opening(s) provided with cover. Cover(s) are insulated, folding and removable.

Interior is constructed of 22-gauge stainless steel. Liner is insulated with 2.50" (6cm) foamed-in-place environmentally friendly, Kyoto Protocol Compliant, Non ODP (Ozone Depletion Potential), Non GWP (Global Warming Potential) polyurethane. Unit has a cold wall refrigeration system provided with adjustable expansion valve located in the 6.00" (15cm) mechanical area at right end. Unit is designed to maintain 0°F (-18°C) to 5°F (-15°C).

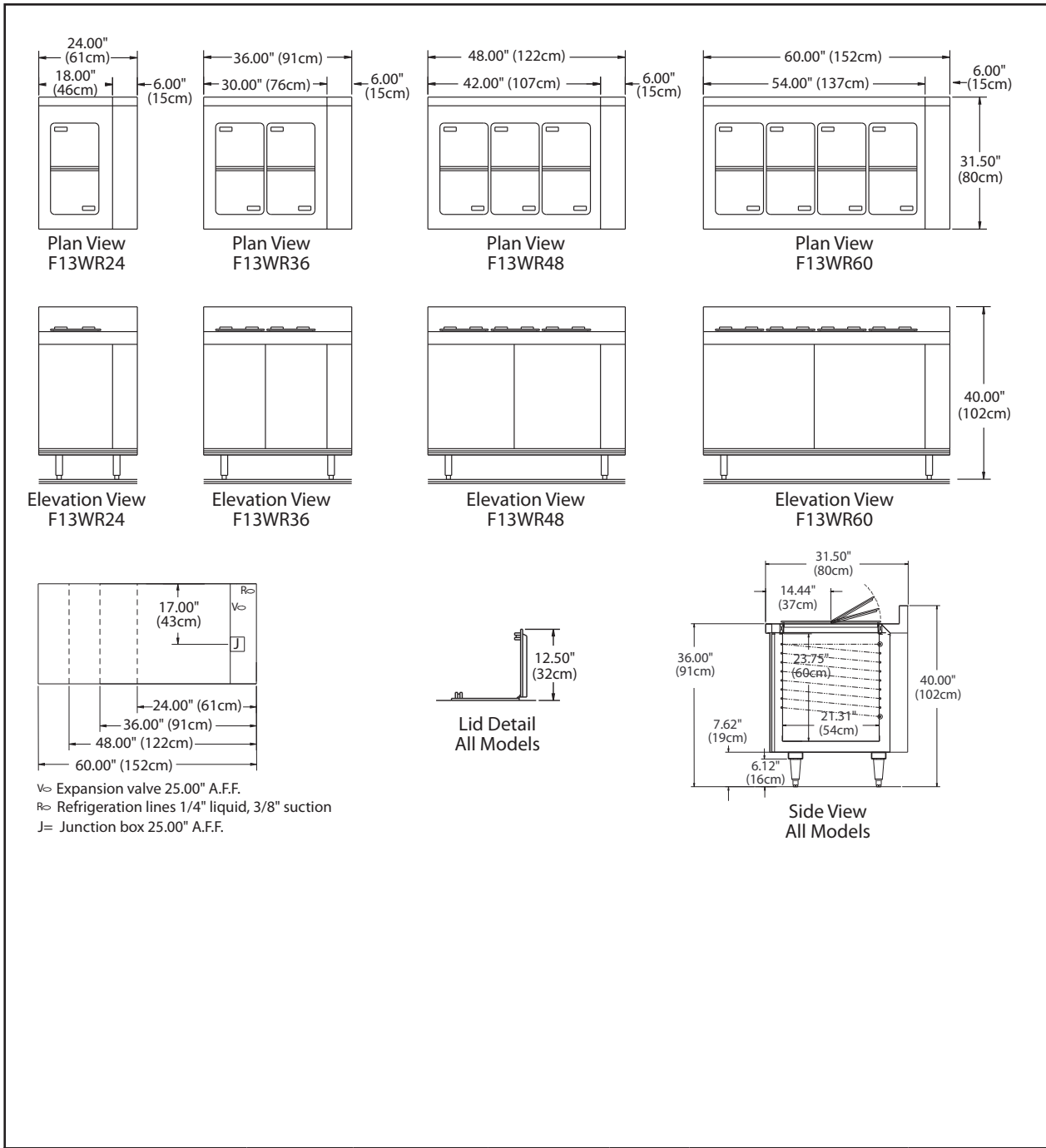
Exterior front has 22-gauge stainless steel front panel(s). Exterior ends are constructed of 18-gauge galvanized steel.

Electrical connections are 115 volt, 60 Hertz, single phase. Unit must be hard wired.

Legs - Unit is mounted on 6.13" (16cm) high adjustable stainless steel legs.

Refrigeration system components — HFC-404A.





F13WR

Specifications								
Model	Gallon Capacity	Number Of Covers	Recommended H.P.	V/Hz/Ph	Amps	BTU Design Load	Evap. Cap. Btu/°Td	Ship Weight
F13WR24	12	2	1/3	115/60/1	1.5	322	27	195lbs/89kg
F13WR36	24	4	1/3	115/60/1	1.5	506	38	255lbs/116kg
F13WR48	36	6	1/3	115/60/1	1.5	638	46	295lbs/134kg
F13WR60	48	8	1/3	115/60/1	1.5	796	56	345lbs/157kg

Delfield reserves the right to make changes to the design or specifications without prior notice.

980 S. Isabella Rd.
 Mt. Pleasant, Michigan 48858

Phone: 800-733-8948 or 989-773-7981
 Fax: 800-669-0619
 www.delfield.com

Printed in the U.S.A.
 DSF13WR
 07/11

