

# Delfield

## F13WC

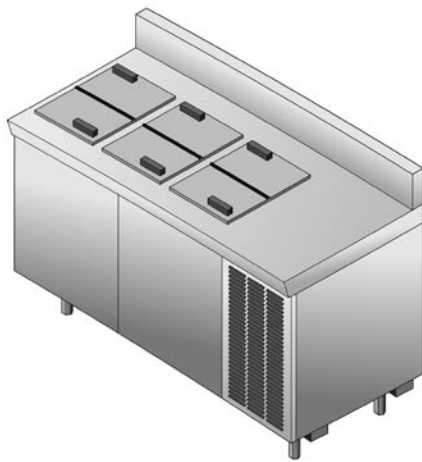
31.5" (80cm) Deep Self-Contained Low Temp, Ice Cream Cabinets

Project \_\_\_\_\_  
 Item \_\_\_\_\_  
 Quantity \_\_\_\_\_  
 CSI Section 11400  
 Approved \_\_\_\_\_  
 Date \_\_\_\_\_

F13WC: 31.5" (80cm) Deep Self-Contained Low Temp, Ice Cream Cabinets

### Models

- F13WC32 32" (81 cm) Self-contained Ice Cream Cabinet
- F13WC44 44" (112cm) Self-contained Ice Cream Cabinet
- F13WC56 56" (142cm) Self-contained Ice Cream Cabinet
- F13WC68 68" (173cm) Self-contained Ice Cream Cabinet



F13WC56

### Standard Features

- Units are standard with unfinished ends
- 16-gauge stainless steel top construction
- 36" standard work height
- High-density environmentally friendly, Kyoto Protocol Compliant, Non ODP (Ozone Depletion Potential), Non GWP (Global Warming Potential) polyurethane foam throughout unit
- Ice cream tank is constructed of 2BF stainless steel with large clean out coved bottom
- 0° tank storage temperatures
- Folding removable cover with black rubber external handle for easy grip
- 8' cord and plug
- Unit has two 14-gauge leg rails that run the entire length of the unit

- 6.12" adjustable full stainless steel legs and bullet feet
- Environmentally friendly HFC-404A refrigerant
- One year parts and 90 day labor standard warranty

### Options & Accessories

- Stainless steel end
- Laminate facing
- Laminate back
- Laminate end
- Sink and dipperwell (consult factory)
- Dipperwell
- Sink (consult factory)
- 220V/50 cycle electrical

### Specifications

**Top** is constructed of one-piece 16-gauge stainless steel, with integral 2.12" (5.4 cm) square nosing on front and 4" (10.1 cm) high by 2" (5.0 cm) thick backsplash on rear. Top to be insulated and have raised rim opening(s) provided with cover. Cover(s) are insulated, folding and removable.

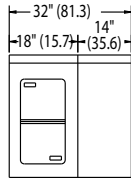
**Interior** is constructed of 22-gauge stainless steel. Liner is insulated with 2.5" (6.4 cm) foamed-in-place environmentally friendly, Kyoto Protocol Compliant, Non ODP (Ozone Depletion Potential), Non GWP (Global Warming Potential) polyurethane. Unit has cold wall refrigeration system provided with adjustable expansion valve and is designed to maintain 0°F (-18°C) to 5°F (-15°C).

**Exterior** front has 22-gauge stainless steel front panel(s). Exterior ends are constructed of 18-gauge galvanized steel. Unit has condensing unit on right end of cabinet and is wired with cord and plug. Housing for condensing unit has a louvered front panel. A low pressure control, with adjustment knob, regulates temperature in cabinet.

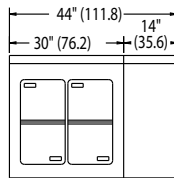
**Electrical connections** are 115 volt, 60 Hertz, single phase.

Unit is mounted on 6.13" (15.6 cm) high adjustable stainless steel legs.

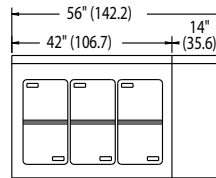




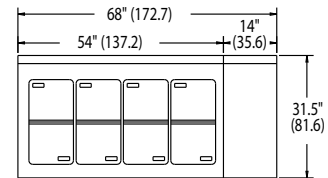
Plan View  
F13WC32



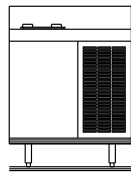
Plan View  
F13WC44



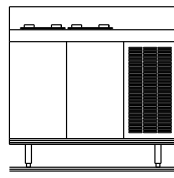
Plan View  
F13WC56



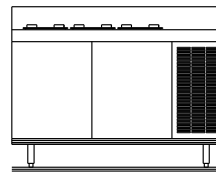
Plan View  
F13WC68



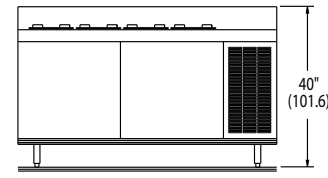
Elevation View  
F13WC32



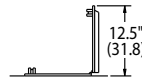
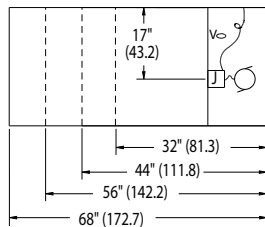
Elevation View  
F13WC44



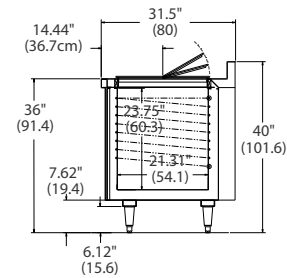
Elevation View  
F13WC56



Elevation View  
F13WC68



Lid Detail  
All Models



Side View  
All Models

**LEGEND**

Condensing unit wired to J-box 25" A.F.F.  
J-box to have ON/OFF switch and 8' cord and plug attached, rear of comp. open to exit cord

V= Expansion valve in back of front panel 12" A.F.F.

**Specifications**

Model	Gallon Capacity	Number of Covers	H.P.	V/Hz/Ph	Amps	Nema Plug	BTU Load	BTU Sys Cap	Ship Weight lbs/kg
F13WC32	12	2	1/3	115/60/1	8.0	5-15P	322	818	311/141
F13WC44	24	4	1/3	115/60/1	8.0	5-15P	506	983	380/173
F13WC56	36	6	1/3	115/60/1	8.0	5-15P	638	1073	408/185
F13WC68	48	8	1/3	115/60/1	8.0	5-15P	796	1160	475/216

Delfield reserves the right to make changes to the design or specifications without prior notice.