



# EODC

## E-Chef™ Open Shelf Module with Double Tier Cantilevered Overshelf

Project \_\_\_\_\_  
 Item \_\_\_\_\_  
 Quantity \_\_\_\_\_  
 CSI Section 11400  
 Approved \_\_\_\_\_  
 Date \_\_\_\_\_

EODC: E-Chef™ Open Shelf Module with Double Tier Overshelf

### Models

EODC24	24" open shelf and double tier overshelf module	EODC60	60" open shelf and double tier overshelf module
EODC27	27" open shelf and double tier overshelf module	EODC64	64" open shelf and double tier overshelf module
EODC32	32" open shelf and double tier overshelf module	EODC72	72" open shelf and double tier overshelf module
EODC36	36" open shelf and double tier overshelf module	EODC74	74" open shelf and double tier overshelf module
EODC48	48" open shelf and double tier overshelf module		



EODC36

### Standard Features

#### Base:

- Stainless steel top and sides
- Stainless steel bottom and center shelf with 3" riser at the rear
- Standard on flanged feet

#### Overshelf:

- Double tier cantilevered overshelf welded in place
- Stainless steel shelves and legs
- Integral brace raceway under each shelf for field added components

### Options & Accessories

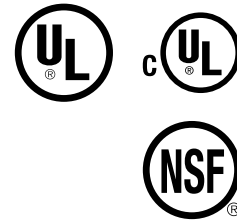
- Raceways (shipped loose)

### Specifications

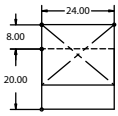
**Base Exterior:** Top is one-piece heavy-gauge stainless steel with integral 2.12" square nosing on front with 1.62" turn up at the rear. Sides are heavy-gauge single thickness stainless steel with 2" bends on front and rear.

**Base Interior:** Bottom and center shelves are heavy-gauge stainless steel with a 3" riser at the rear.

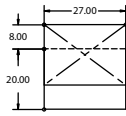
**Overshelf:** Double tier overshelf is constructed of heavy gauge stainless steel and is welded to the top of the base module. Overstructure cantilevers to rear of base. Each shelf is 20" deep and has a standard 5" brace with removable cover to act as an electrical raceway for field added components.



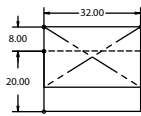
EODC E-Chef™ Open Shelf Module with Double Tier Overshelf



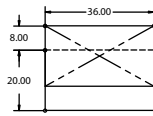
Plan View  
EODC24



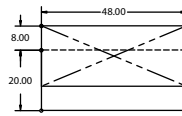
Plan View  
EODC27



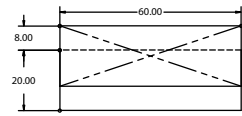
Plan View  
EODC32



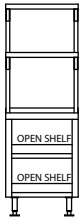
Plan View  
EODC36



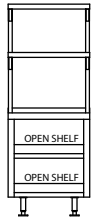
Plan View  
EODC48



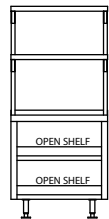
Plan View  
EODC60



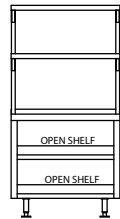
Elevation View  
EODC24



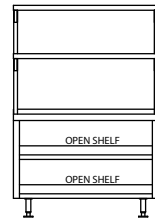
Elevation View  
EODC27



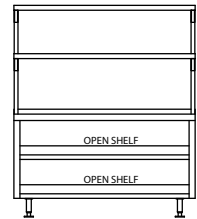
Elevation View  
EODC32



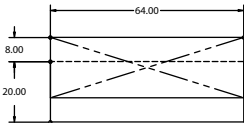
Elevation View  
EODC36



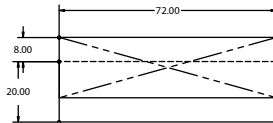
Elevation View  
EODC48



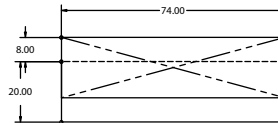
Elevation View  
EODC60



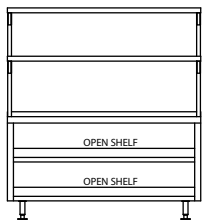
Plan View  
EODC64



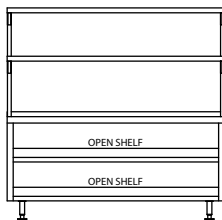
Plan View  
EODC72



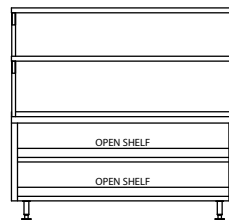
Plan View  
EODC74



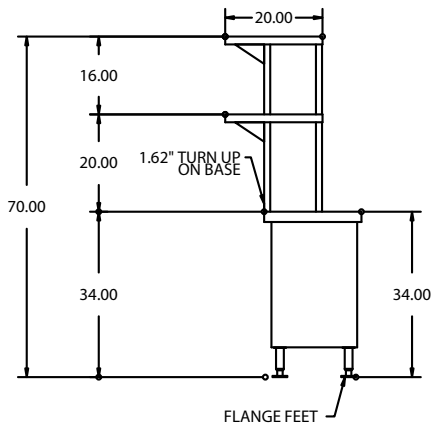
Elevation View  
EODC64



Elevation View  
EODC72



Elevation View  
EODC74



Side View  
all EODC models

Specifications				
Model	L	D	H	Ship Weight
EODC24	24"	28"	70"	200
EODC27	27"	28"	70"	225
EODC32	32"	28"	70"	240
EODC36	36"	28"	70"	250
EODC48	48"	28"	70"	280
EODC60	60"	28"	70"	320
EODC64	64"	28"	70"	330
EODC72	72"	28"	70"	360
EODC74	74"	28"	70"	370