



PROJECT	
ITEM #	
QUANTITY	DATE
APPROVAL	

SCSC-B**Mobile Self-Contained Cold Pan Serving Counters****Short Form Specifications**

Exterior body is constructed of 18-gauge stainless steel side panels and 14-gauge galvanized bottom. All exterior side panels are reinforced with overlapping corners and are welded in place. All body cutouts are reinforced with 14-gauge galvanized channel supports.

Exterior top is constructed of 14-gauge stainless steel, welded, ground and polished into one integral unit.

The refrigerated cold pan is 7" (17.8cm) deep and constructed of stainless steel. The cold pan is separated from the exterior top by a thermal break. Copper refrigeration tubing is attached to the sides and bottom of the cold pan and is fully insulated with foamed in place polyurethane insulation. Cold pan is equipped with a 1" (2.5cm) I.P.S. drain with drain valve located at the bottom of the unit. Temperatures of 33°F (1°C) to 41°F (5°C) are maintained with pans recessed 3" (7.6cm) at 86°F ambient room temperature. Pans rest on a stainless steel bracket. Pans by others.

Refrigeration system uses HFC-404A refrigerant and has a self-contained 115 volt, 60 Hertz, single phase hermetically sealed condensing unit with adjustable cold pan pressure control. Unit is wired with a 3-wire, grounded, maximum 10' (3m) cord and plug. Unit has an on/off switch mounted on the exterior.

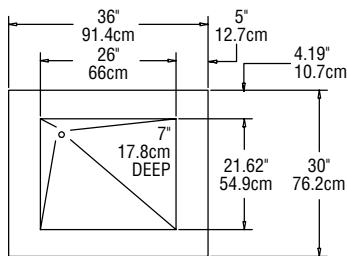
Casters: Unit is mounted on 5" (12.7cm) diameter swivel casters with non-marking polyolefin tires and plate brakes. Overall height of caster assembly is 6.00" (15.2cm).

**Model SCSC-50-B****Optional Accessories and Modifications**

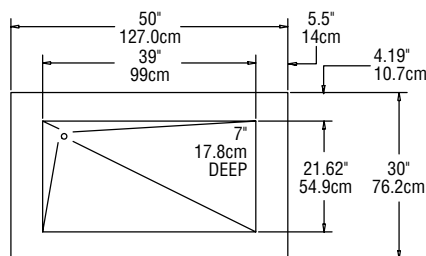
- A) 12" (30.5cm) wide stainless steel fold-down tray slide
- C) 10" (25.4cm) wide three-bar fold-down tray slide
- D) 10" (25.4cm) wide composite fold-down cutting boards
- E) 10" (25.4cm) wide stainless steel fold-down work shelf
- F) Line-up interlock device
- G) Glass-front counter protector
- H) Two tier display with glass shelves and sneezeguards
- HD) Dual service two tier display with sneezeguards
- I) Three tier display with glass shelves and sneezeguards
- J) 12" (30.5cm) wide 18-gauge stainless steel overshell
- KS) Single service flip-up sneeze guard
- KD) Double service flip-up sneeze guard
- L) *Fluorescent or incandescent light fixtures (specify which)
- P) Open understorage with shelf
- Q) *120V/60Hz/1Ø, 10 amp convenience outlet with breaker
- SG5A) Dry storage compartment — single door
- SG5B) Dry storage compartment — double door
- SG20) *Refrigerated understorage (60" unit or longer only)
- ST) Stainless steel trim strips
- U) 14" x 30" (35.6cm x 76.2cm) stainless steel end drop shelf
- V) 6" (15.2cm) high adjustable stainless steel legs in lieu of casters
- X) Laminate exterior panels in lieu of stainless steel
- Adapter bars (specify length)

*Inclusion of these options will alter the electrical specifications of unit.

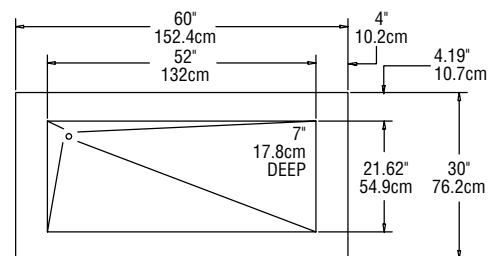




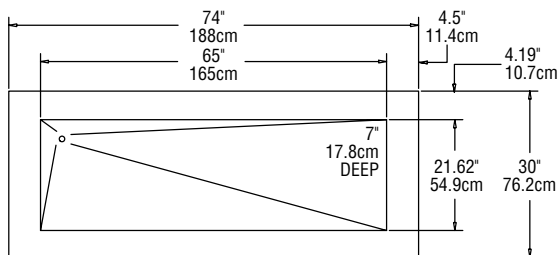
**PLAN VIEW
SCSC-36-B**



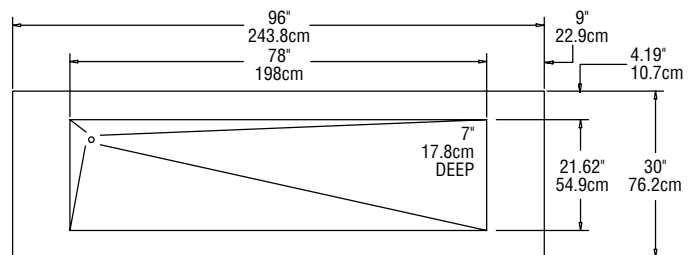
**PLAN VIEW
SCSC-50-B**



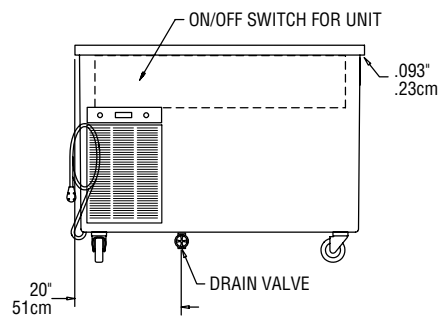
**PLAN VIEW
SCSC-60-B**



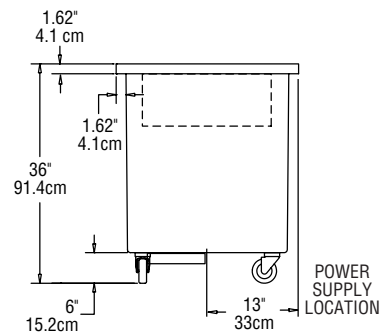
**PLAN VIEW
SCSC-74-B**



**PLAN VIEW
SCSC-96-B**



**TYPICAL ELEVATION VIEW
ALL SCSC-B MODELS**



**TYPICAL END VIEW
ALL SCSC-B MODELS**

Mechanical Data—Standard Unit

MODEL NUMBER	VOLTAGE 60 HZ/ 1 Ø	AMP	HORSEPOWER	NEMA PLUG	SHIP WEIGHT
SCSC-36B	115	7.0	1/4	5-15P	350 lbs/ 159 kg
SCSC-50B	115	7.0	1/4	5-15P	425 lbs/ 193 kg
SCSC-60B	115	7.0	1/4	5-15P	500 lbs/ 227 kg
SCSC-74B	115	7.0	1/4	5-15P	575 lbs/ 261 kg
SCSC-96B	115	7.0	1/4	5-15P	650 lbs/ 295 kg