



STEARNS PRODUCT DEVELOPMENT CORPORATION

Operations Manual

SL1577

Split Lid Clam Shell Grill

Doughpro

20281 Harvill Ave
Perris, CA 92570

Phone (951) 657-0379

Toll Free (800) 624-6717

Fax (951) 657-4594

Website: www.doughpro.com

E-Mail: info@doughpro.com

Listed:



Operation Instructions

Please read carefully before attempting to use this appliance.

- Step 1.** Carefully unpack and clean grill plates with mild soap then sponge clean with cold water.
- Step. 2.** Place in location where it will be used allowing for clearances per the dimensions indicated.

WARNING! Allow 2" minimum clearance between adjacent equipment and/or wall areas.

Do not touch hot surfaces.

- Step 3.** Plug into proper 3 prong wall outlet. If other appliances are connected to the same circuit make sure the total load does not exceed maximum ampacity of the circuit. Electrical information is as follows:

120V/60Hz/1 phase/2200W/18.3 Amps

208V/60Hz/1 phase/2800W/13.5 Amps

220V/60Hz/1 phase/2200W/10.0 Amps

Step 4: Warm-up

Energize by turning on the power switch which will illuminate when turned on. The display flashes and shows left preset timer during warm-up. Pre-heat temperature time will be 40-50 minutes. When the set point is reached, the display stops flashing and beeps 3 times.

Step 4: Operation

Simply place product on either side of the grill, close lid and press the desired pre-set time cycle 10 or 20 seconds. After the time cycle is finished press it again to reset the time cycle.

Cleaning Instructions

NOTE! Always turn off power and allow to cool down before attempting to clean. ***Never submerge grill in water or other liquid nor use mineral spirits or other flammable material to clean this appliance.***

Clean stainless steel and griddle surfaces with soap and water using a soft, clean cloth periodically as required, but at least once daily. Never use harsh abrasives. Use only non-abrasive scouring pads when required.

Clean Cycle

To start a clean cycle, push CLEAN button once so the CLEAN LED light is turned on. All preset LED's are turned off, and the temperature set point is changed to the clean set point of 275°F. This also initiates the cool down to clean set point condition as well the display starts flashing until the clean set point is reached.

To stop the clean cycle, simply press the CLEAN button once to deactivate the clean cycle. The CLEAN LED is turned off, the preset LED's are restored, the temperature set point is changed to the main set point. Again, the warm-up condition is initiated and the display flashes until the cook set point is reached.

Clean Button

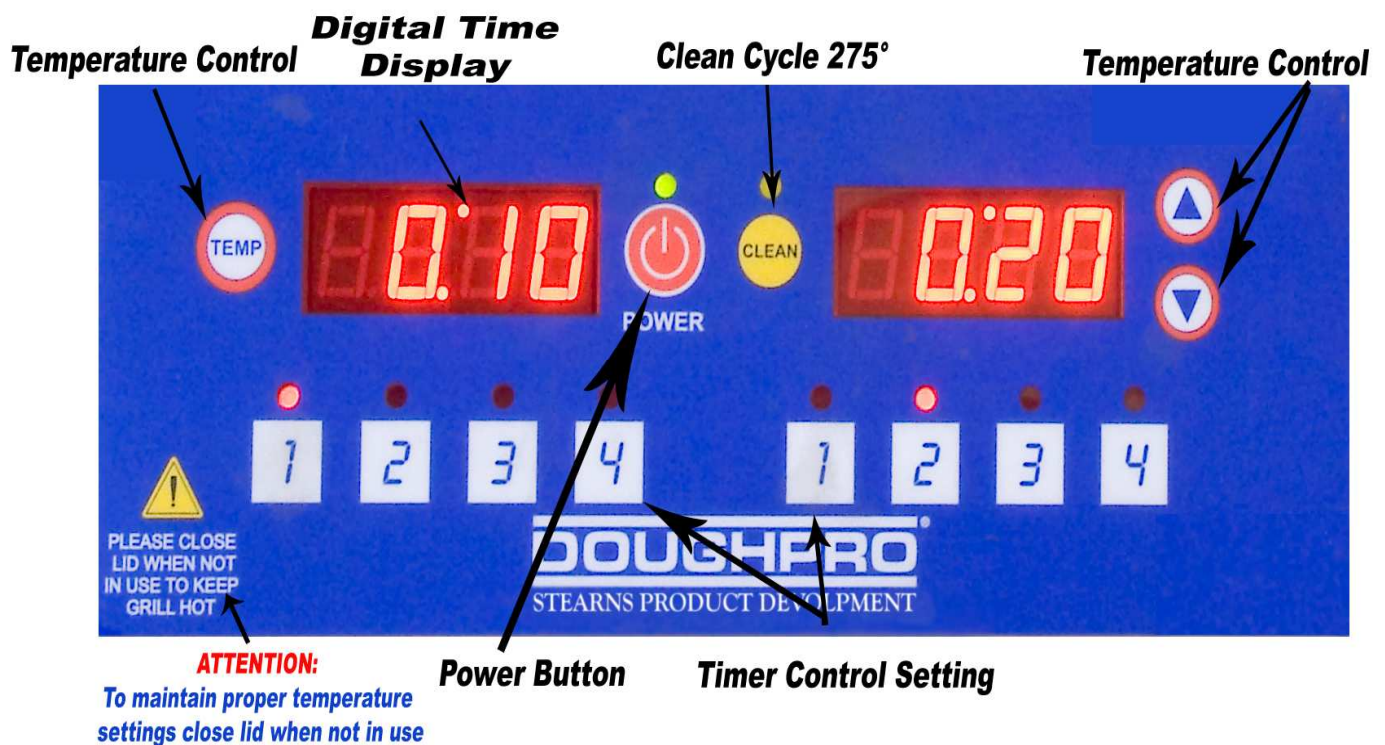


SL1577 Operating Instructions:

1. Press desired time to start the time cycle. After the cycle is finished, press it again to reset the time cycle

HOW TO FIND TEMPERATURE

1. To find the temperature of the UPPER PLATENS:
Press the TEMPERATURE button and the ARROW UP button at the same time.
2. To find the temperature of the LOWER PLATENS:
Press the TEMPERATURE button and the ARROW DOWN button at the same time



Instruction's for Adjusting the Temperature

PRESS and hold the **TEMP** and **ARROW** up buttons **simultaneously** for 15 seconds.

The current temperature setting will display on the right digital display only.

Using the **ARROW** buttons, you may now adjust the temperature to your desired setting.

Once you have set your desired temperature simply push the **TEMP** button. The digital displays will now read the preset times.



Instruction's for Adjusting the Set-Time

PRESS the desired button you wish to program.

Now press **BOTH** button and **TEMP** buttons **simultaneously** for 5 seconds.

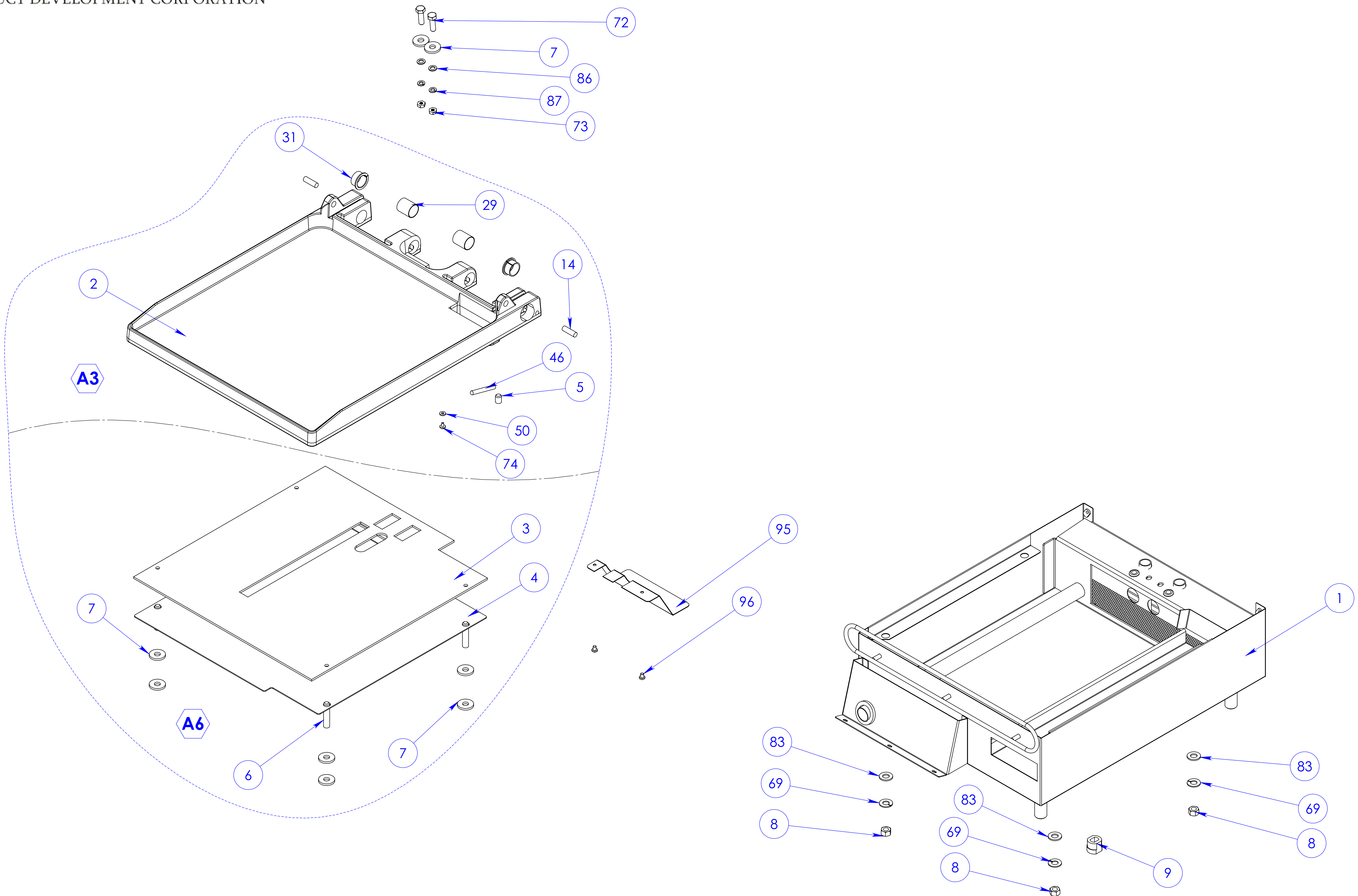
The digital displays will now read their preset times as shown here. Each side is capable of having up to 4 different settings, making a total of 8 set-times.

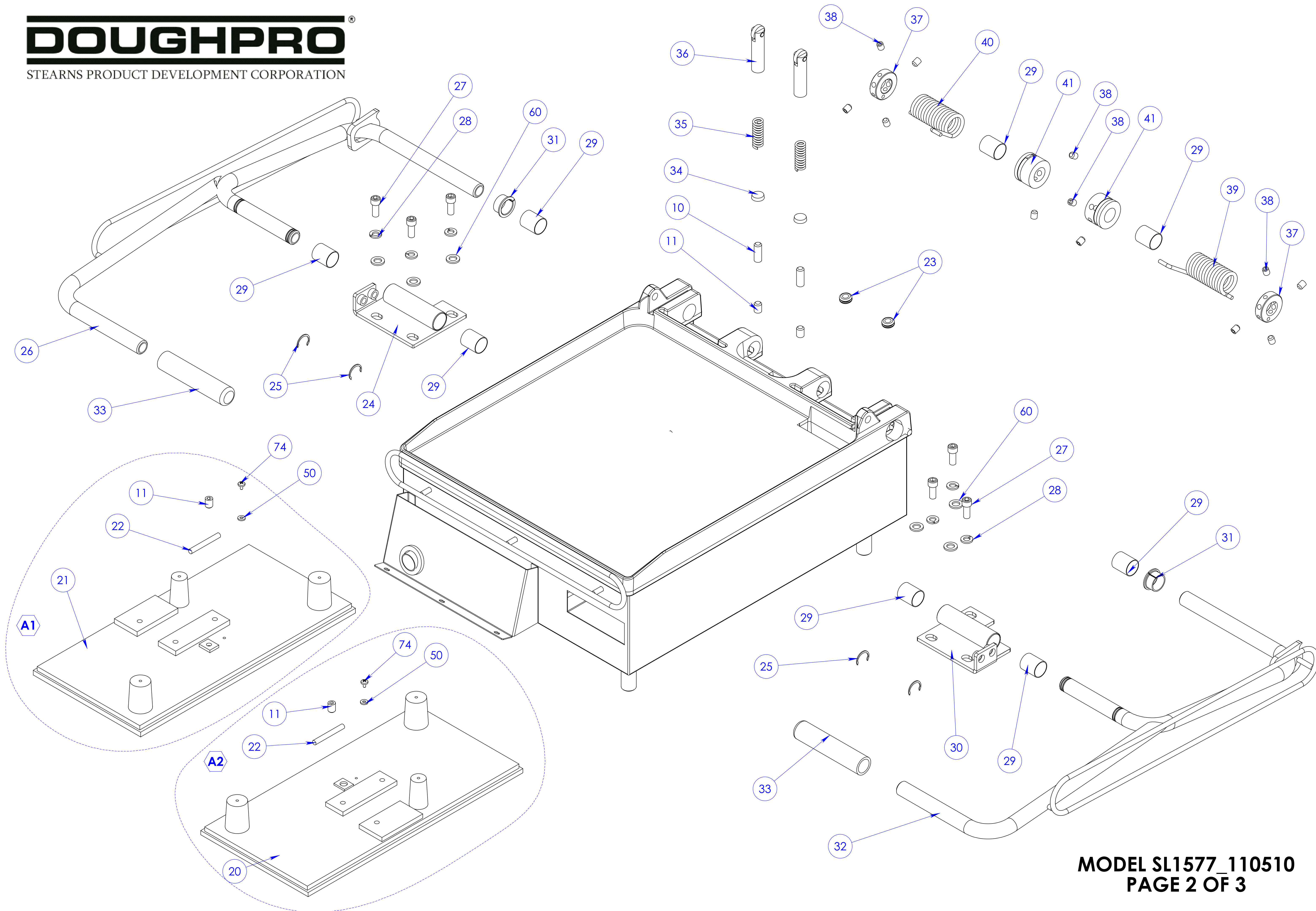


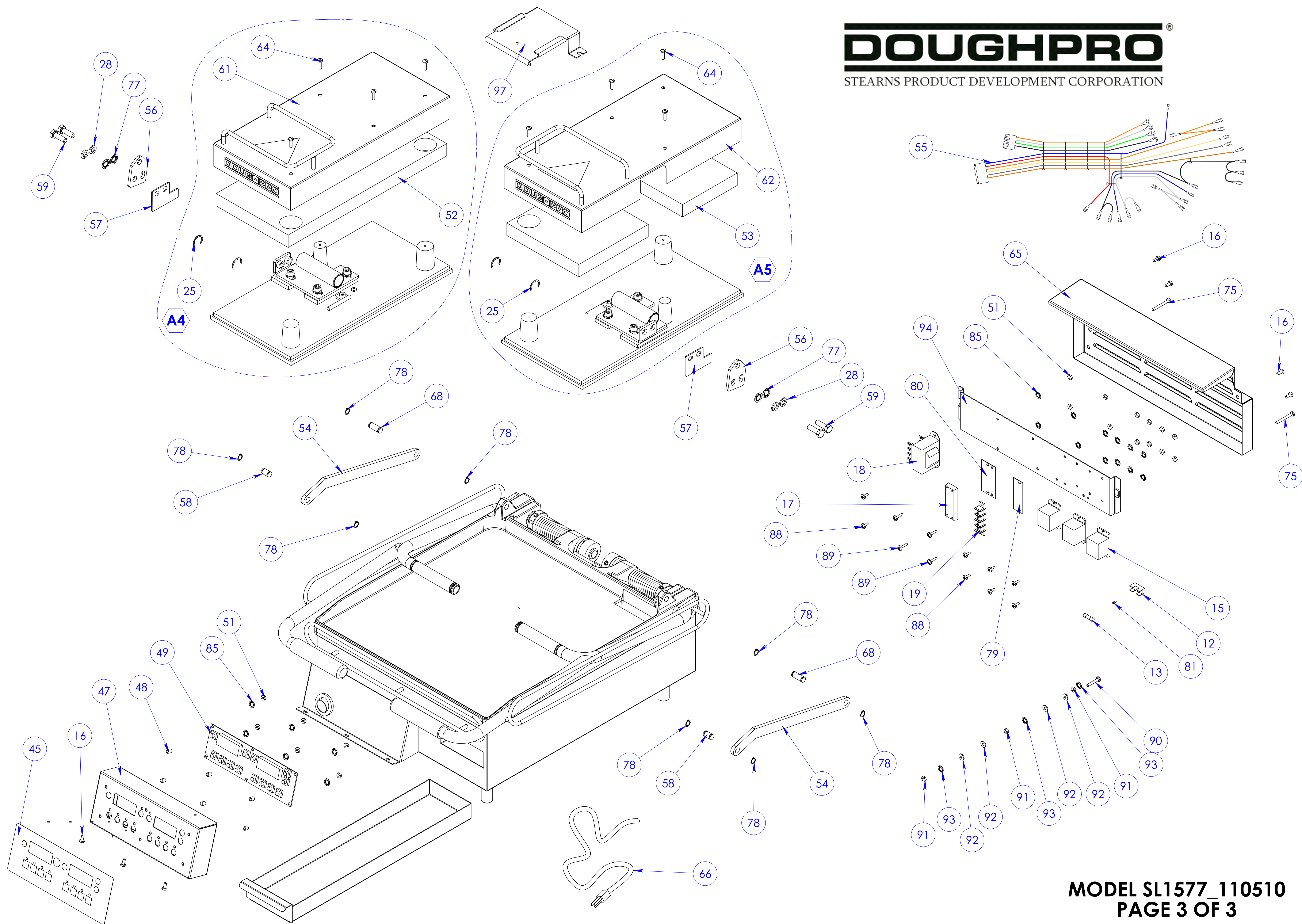
Now using the **ARROW** buttons you can set your desired time.

Once you have set the desired time simply press the **TEMP** button, the unit will display the new set-time.

***IMPORTANT NOTE:** When adjusting the time settings, The **RIGHT SIDE** time buttons control the left side, so the same time you set on the right will automatically be set to the left side accordingly. If you desire an additional set of times you can adjust the left side **AFTER** you have adjusted the right side without effecting the right side settings.







SL1577

		MODEL SL1577YA	MODEL SL1577A	MODEL SL1577B	MODEL SL1577C	MODEL SL1577E	QTY.
ITEM #	PART NAME	120 V	120 V	220 V	220 V	208 V	
1	LOWER WRAP AROUND SHROUD ASSEMBLY	110115501	110115501	110115501	110115501	110115501	1
2	LOWER PLATEN	1101007002120	1101007002120	1101007002220	1101007002220	1101007002208	1
3	LOWER PLATEN INSULATION	110115542	110115542	110115542	110115542	110115542	1
4	COVER, LOWER PLATEN ASSEMBLY	110115506	110115506	110115506	110115506	110115506	1
5	SET SCREW 5/16-18 x 1/2	SST5161812	SST5161812	SST5161812	SST5161812	SST5161812	1
6	SCREW SET 3/8-16 x 1-3/4	SST3816134	SST3816134	SST3816134	SST3816134	SST3816134	4
7	GREEN INSULATION WASHER	C4401	C4401	C4401	C4401	C4401	10
8	HEX NUT 3/8-16	NH3816	NH3816	NH3816	NH3816	NH3816	4
9	STRAIN RELIEF	MPSS168	MPSS168	MPSS168	MPSS168	MPSS168	1
10	SET SCREW 3/8-16 x 1.0	SST38161	SST38161	SST38161	SST38161	SST38161	2
11	SET SCREW 3/8-16 x 1/2	SST381612	SST381612	SST381612	SST381612	SST381612	4
12	FUSE HOLDER 1 AMP	MPPF708	MPPF708	MPPF708	MPPF708	MPPF708	1
13	FUSE BUSS 1 AMP	MPPF701R	MPPF701R	MPPF701R	MPPF701R	MPPF701R	1
14	PIN, BACK STOP	110115543	110115543	110115543	110115543	110115543	2
15	RELAY	110942520	110942520	110942520	110942520	110942520	3
16	SCREW, PHILLIPS. PAN HEAD 8-32 x 3/8 S.S.T	SP83238S	SP83238S	SP83238S	SP83238S	SP83238S	7
17	4 STAGE TERMINAL BLOCK DOUBLE	6014	6014	6014	6014	6014	1
18	TRANSFORMER	11096975	11096975	11096975	11096975	11096975	1
19	4 STAGE TERMINAL BLOCK SINGLE	6994	6994	6994	6994	6994	1
20	UPPER PLATEN RIGHT HAND	110115540R120	110115540R120	110115540R220	110115540R220	110115540R208	1
21	UPPER PLATEN LEFT HAND	110115540L120	110115540L120	110115540L220	110115540L220	110115540L208	1
22	RTD SENSOR	1108881101	1108881101	1108881101	1108881101	1108881101	2
23	GROMMET 5/16 x 1/2	110115554	110115554	110115554	110115554	110115554	2
24	CLEVIS ASSEMBLY LEFT HAND	110115503	110115503	110115503	110115503	110115503	1
25	E-CLIP, RETAINING RING	LCC3478	LCC3478	LCC3478	LCC3478	LCC3478	4
26	HANDLE LEFT ASSEMBLY	110115522	110115522	110115522	110115522	110115522	1
27	SOCKET HEAD SCREW 5/16-18 x 3/4	SSH5161834	SSH5161834	SSH5161834	SSH5161834	SSH5161834	6
28	WASHER 5/16, LOCK	WL516	WL516	WL516	WL516	WL516	10
29	BUSHING TEFLON 1" LONG	110115541	110115541	110115541	110115541	110115541	8
30	CLEVIS ASSEMBLY RIGHT HAND	110115504	110115504	110115504	110115504	110115504	1
31	FLANGED BUSHING TEFLON 1/2" LONG	110115563	110115563	110115563	110115563	110115563	2
32	HANDLE RIGHT ASSEMBLY	110115521	110115521	110115521	110115521	110115521	1
33	HANDLE GRIP	110901168	110901168	110901168	110901168	110901168	2
34	TUBING PAD	110115531	110115531	110115531	110115531	110115531	2
35	SPRING, DETENT 1-1/2 LONG	110115555	110115555	110115555	110115555	110115555	2
36	PLUNGER ASSEMBLY	110115544	110115544	110115544	110115544	110115544	2
37	HANDLE SPRING ADJUSTING COLLAR	110115528	110115528	110115528	110115528	110115528	2
38	SCREW SET KNURLED CUP POINT 5/16-18 x 3/8	SST5161838KN	SST5161838KN	SST5161838KN	SST5161838KN	SST5161838KN	12
39	COUNTER BALANCE SPRING RIGHT HAND	1101023154R	1101023154R	1101023154R	1101023154R	1101023154R	1
40	COUNTER BALANCE SPRING LEFT HAND	1101023154L	1101023154L	1101023154L	1101023154L	1101023154L	1
41	COLLAR HOLDER	110115530	110115530	110115530	110115530	110115530	2
44	GREASE TRAY	110115505	110115505	110115505	110115505	110115505	1
45	OVERLAY	OPROSL1577Y	OPROCSD301515	OPROCSD301515	OPROCSD301515	OPROCSD301515	1
46	SENSOR	1108881102	1108881102	1108881102	1108881102	1108881102	1
47	INSTRUMENT HOUSING ASSEMBLY	110115511	110115511	110115511	110115511	110115511	1
48	NYLON SPACER 1/4" x .141 x 9/32 LONG	11090109	11090109	11090109	11090109	11090109	6
49	DIGITAL CONTROL	1101041052	1101041052	1101041052	1101041052	1101041052	1
50	WASHER, SAE #6	WSAE6	WSAE6	WSAE6	WSAE6	WSAE6	3
51	NUT 6-32	NH632	NH632	NH632	NH632	NH632	18
52	INSULATION UPPER PLATEN LEFT HAND	110888251L	110888251L	110888251L	110888251L	110888251L	1
53	INSULATION UPPER PLATEN RIGHT HAND	110888251R	110888251R	110888251R	110888251R	110888251R	1
54	TOP LINK	110115508	110115508	110115508	110115508	110115508	2
55	WIRE HARNESS	1101101050	1101101050	1101101050	1101101050	1101101050	1

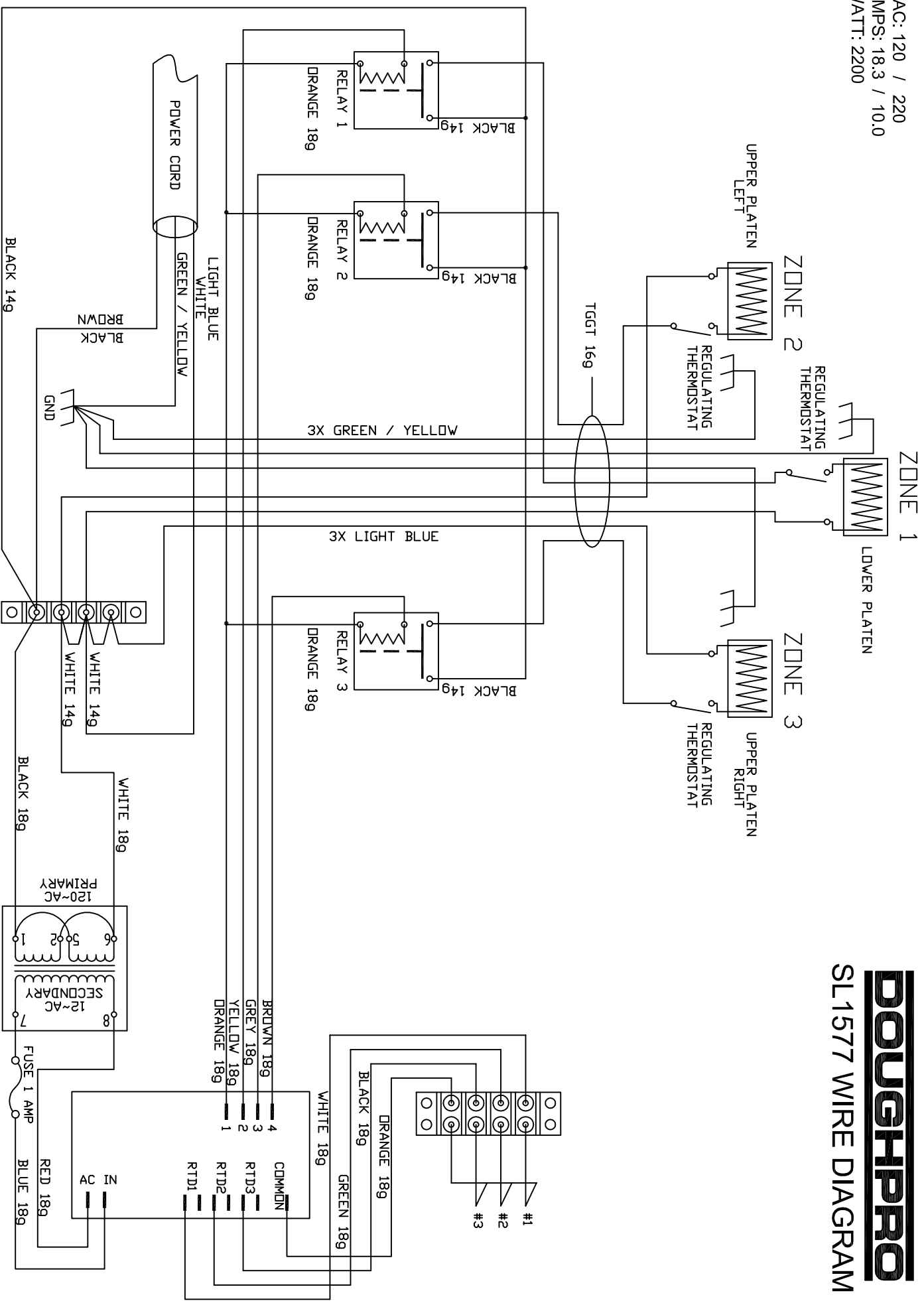
SL1577

56	UPPER LEVELING BRACKET	110115510	110115510	110115510	110115510	110115510	2
57	UPPERLEVELING SHIM	110115557	110115557	110115557	110115557	110115557	2
58	PIN PIVOT FRONT	110115565	110115565	110115565	110115565	110115565	2
59	SCREW BOLT HEX HEAD 5/16-18 X 1.0 S.S.T	BH516181S	BH516181S	BH516181S	BH516181S	BH516181S	4
60	WASHER CUT 5/16	WC516	WC516	WC516	WC516	WC516	6
61	SHROUD, LEFT ASSEMBLY	110115553	110115553	110115553	110115553	110115553	1
62	SHROUD, RIGHT ASSEMBLY	110115552	110115552	110115552	110115552	110115552	1
64	SCREW, SLOTTED PAN HEAD 10-24 x 5/8 S.S.T	SPS102458S	SPS102458S	SPS102458S	SPS102458S	SPS102458S	8
65	BACK COVER	110115562	110115562	110115562	110115562	110115562	1
66	POWER CORD	1101217174	1101217174	1101217175	MPPW202	1101217175	1
68	PIN PIVOT BACK	110115566	110115566	110115566	110115566	110115566	2
69	WASHER 3/8 LOCK	WL38	WL38	WL38	WL38	WL38	4
72	SCREW BOLT HEX HEAD 1/4-20 x 1.0	BH14201	BH14201	BH14201	BH14201	BH14201	2
73	NUT SARRATED FLANGED 1/4-20	NHSF1420	NHSF1420	NHSF1420	NHSF1420	NHSF1420	2
74	SCREW, PHILLIPS. PAN HEAD 6-32 x 1/4	SP63214	SP63214	SP63214	SP63214	SP63214	3
75	SCREW, PHILLIPS. PAN HEAD 8-32 x 1-1/2 S.S.T	SP832112S	SP832112S	SP832112S	SP832112S	SP832112S	2
77	WASHER LOCK INTERNAL TOOTH	WLIT516	WLIT516	WLIT516	WLIT516	WLIT516	4
78	RETAINING RING	110115567	110115567	110115567	110115567	110115567	8
79	MARKER STRIP, #4 SINGLE	MS6994	MS6994	MS6994	MS6994	MS6994	1
80	MARKER STRIP, #4 DOUBLE	MS6014	MS6014	MS6014	MS6014	MS6014	1
81	SCREW, PHILLIPS. PAN HEAD 2-56 x 1/4	SP25614	SP25614	SP25614	SP25614	SP25614	1
83	WASHER, SAE 3/8	WSAE38	WSAE38	WSAE38	WSAE38	WSAE38	4
85	WASHER, #6 INTERNAL TOOTH LOCK	WLIT6	WLIT6	WLIT6	WLIT6	WLIT6	18
86	WASHER, SAE 1/4	WSAE14	WSAE14	WSAE14	WSAE14	WSAE14	2
87	WASHER, LOCK 1/4	WL14	WL14	WL14	WL14	WL14	2
88	SCREW PHILLIPS PAN HEAD 6-32 x 3/8	SP63238	SP63238	SP63238	SP63238	SP63238	8
89	SCREW PHILLIPS PAN HEAD 6-32 x 5/8	SP63258	SP63258	SP63258	SP63258	SP63258	4
90	SCREW PHILLIPS PAN HEAD 8-32 x 1.0	SP8321	SP8321	SP8321	SP8321	SP8321	1
91	NUT, HEX 8-32	NH832	NH832	NH832	NH832	NH832	3
92	WASHER #8	WSAE8	WSAE8	WSAE8	WSAE8	WSAE8	4
93	INTERNAL TOOTH LOCK WASHER #8	WLIT8	WLIT8	WLIT8	WLIT8	WLIT8	3
94	MOUNTING BRACKET ASSEMBLY	110115559	110115559	110115559	110115559	110115559	1
95	COVER, HEATER ELEMENT	110115564	110115564	110115564	110115564	110115564	1
96	SCREW, PAN HEAD PHILLIPS 6-32 X .250	SP63214ST	SP63214ST	SP63214ST	SP63214ST	SP63214ST	2
97	SPATUTAL HOLDER	110115513	N/A	N/A	N/A	N/A	1
A1	UPPER PLATEN LEFT HAND WITH WIRING	1101155201	1101155201	1101155202	1101155202	1101155203	1
A2	UPPER PLATEN RIGHT HAND WITH WIRING	1101155204	1101155204	1101155205	1101155205	1101155206	1
A3	LOWER PLATEN WITH WIRING	1101155207	1101155207	1101155208	1101155208	1101155209	1
A4	UPPER PLATEN LEFT HAND ASSEMBLY	1101155110	1101155110	1101155111	1101155111	1101155112	1
A5	UPPER PLATEN RIGHT HAND ASSEMBLY	1101155113	1101155113	1101155114	1101155114	1101155115	1
A3,A6	LOWER PLATEN ASSEMBLY	1101155116	1101155116	1101155117	1101155117	1101155118	1

VAC: 120 / 220
AMPS: 18.3 / 10.0
WATT: 2200

DOUGHPRO

SL1577 WIRE DIAGRAM





**PLEASE READ CAREFULLY BEFORE ATTEMPTING TO
USE THIS APPLIANCE.**

LIMITED MACHINE WARRANTY

WHAT IS COVERED

Doughpro warrants the SL1577, from manufacturing defects in workmanship and material sold within the domestic United States.

HOW LONG DOES THE COVERAGE LAST

One-year warranty for parts and labor. The heating elements on the upper and lower platens have a limited lifetime warranty on the elements.

WHAT WE WILL DO

We will repair or replace the defective SL1577 on normal warranty one-year parts and labor. The heating elements on the upper and lower platen only; will be replaced by next day air service; under the normal one-year warranty. Such repair or replacement will be at the expense of Doughpro on under the normal one-year warranty.

HOW TO GET SERVICE

Contact our Factory to obtain warranty service. Doughpro must issue a return authorization number, and call tag, or find the name and location of a Factory Authorized Service Center nearest you. When calling for service, please furnish the model number, serial number, and a description of the problem.

WHAT THIS WARRANTY DOES NOT COVER

THE WARRANTIES PROVIDED BY PROPROCESS/DOUGHPRO DO NOT APPLY IN THE FOLLOWING INSTANCES:

- Damage due to misuse, abuse, alteration, or accident.
- Improper or unauthorized repairs.
- Submerged in water.
- Dropped.
- Damage in shipment.
- Equipment exported to foreign countries.



Stearns Product Development Corp. 20281 Harvill Ave. Perris, Ca 92570
(951) 657-0379 Fax (951) 657-4954

Warranty & Return Policy

STEARNS PRODUCT DEVELOPMENT CORPORATION warrants all products manufactured by it against defects in workmanship or materials from the date of purchase for a period of (1) year on parts and labor. **This warranty applies to only equipment purchased and used in the United States.**

Exclusions:

1. **WOOD / GAS FIRED OVENS:** **STEARNS PRODUCT DEVELOPMENT CORPORATION** warranty applies to the main body of the oven being steel

/ refractory and insulation shall be free from defects in materials and workmanship for a period of four (10) years from the date of purchase. The gas equipment shall be free from defects in materials and workmanship for a period of one (1) year from the date of purchase. This warranty excludes the tandoori and home oven. Lifetime warranty against cracks on oven floor.

2. **TANDOORI & HOME OVENS:** **STEARNS PRODUCT DEVELOPMENT CORPORATION** warrants the Tandoori & Home Oven including gas

equipment shall be free from defects in materials and workmanship for a period of one (1) year from the date of purchase.

3. **Air compressors are excluded from this warranty**, but **STEARNS PRODUCT DEVELOPMENT CORPORATION** may act as a warranty

expeditor in certain instances regarding these compressors. The air compressor manufacturer provides a limited warranty

and a copy of this warranty is furnished with all compressors sold by **STEARNS PRODUCT DEVELOPMENT CORPORATION**. For prompt

handling of compressor warranty claims the instructions of the compressor manufacturer must be adhered to.

4. **Equipment built to special order as well as accessories** are not returnable unless defective within the terms of this warranty.

5. **In no event shall STEARNS PRODUCT DEVELOPMENT CORPORATION be liable for consequential damages arising out of the failure of**

any of its products if operated improperly or caused by normal wear or damage by operator abuse.

Returned Merchandise Policy:

Should it become necessary to return any of the company's products, the following instructions must be adhered to: First,

contact our customer service department for approval and a return authorization number. *Please have the serial number*

of your item available at that time. All merchandise must be shipped *freight prepaid* by customer or service agency.

Subject to the inspection of the product by the company, a restocking charge of 20% of the Net purchased price paid to

STEARNS PRODUCT DEVELOPMENT CORPORATION will be assessed. Merchandise may not be returned for credit without *prior written*

approval of **STEARNS PRODUCT DEVELOPMENT CORPORATION**. Collect shipments *will not* be accepted. No returns after 60 days of original

shipment date on machines. Purchased parts may not be returned after 30 days.

If upon inspection by **STEARNS PRODUCT DEVELOPMENT CORPORATION** or its authorized agent it is determined the equipment has not been

used in an appropriate manner, has been modified, or has not been properly maintained, or has been subject to misuse, misapplication, neglect, abuse, accident, unauthorized modification, damage during transit, delivery, fire, flood, act or war, riot or act of God, then this warranty shall be deemed null and void.

Terms & Conditions:

1. Prices indicated in the PRICE LIST are suggested retail prices and are shown in U.S. DOLLARS.

2. Terms of Payment: 1% 10 days, NET 30 days.

3. **NEW ACCOUNTS:** Satisfactory credit information must be provided before open account status can be extended.

Unless agreed otherwise, all shipments will be made C.O.D., CASH IN ADVANCE.

4. **PRICING:** Prices, specifications, model numbers, capacities and accessories are subject to change without notice.

5. **FREIGHT / ROUTING:** Method of shipment will be determined by **STEARNS PRODUCT DEVELOPMENT CORPORATION** unless otherwise

advised by PURCHASER.

6. **DAMAGED CLAIMS:** All merchandise shipped at purchaser's risk. Inspection must be made by purchaser at time

goods are received. If goods are damaged, the PURCHASER shall request that the agent of the transportation

company make a written notation on the proper shipping documents immediately and then file a claim for damage.

GOODS DAMAGED IN SHIPMENT ARE NOT RETURNABLE.

7. **RETURNS:** Machines may not be returned after 60 days. Purchased parts may not be returned after 30 days. A

restocking fee of 20% will be assessed on non-warranty returns.

8. **TAXES:** Prices indicated herein DO NOT include State, Federal, Local or foreign taxes or duties, nor do they include fees, permits, insurance or other levies, all of which are the responsibility of the purchaser.

9. All orders are subject to acceptance by **STEARNS PRODUCT DEVELOPMENT CORPORATION**.

10. Possession of this price list shall not be considered an offer to sell.