

DOUGHPRO[®]

Operation Manual

SL1577



Digitally Controlled Split Lid Toaster

PROPROCESS CORPORATION
P.O. Box 869 • 7328 Madison St. • Paramount, CA 90723
(562) 531-0305 • (300) 624-6717 • Fax: (562) 869-7715



DOUGHPRO[®]
PROPROCESS CORPORATION
Website: www.doughpro.com E-Mail: info@doughpro.com



Operation Instructions

Step 1

Carefully unpack and clean grill plates with mild soap then sponge clean with cold water.

Step 2

Place in location where it will be used allowing for clearances per the dimensions indicated.

WARNING

- **ALLOW 2" MINIMUM CLEARANCE** between adjacent equipment and/or wall areas.
- **DO NOT** touch hot surfaces.

Step 3

Plug into proper 3 prong wall outlet. If other appliances are connected to the same circuit make sure the total load does not exceed maximum ampacity of the circuit. Electrical information as follows:

120V / 50/60Hz / 1 Phase / 2200W / 18.3 A (20 Amp Circuit).

220V / 50/60Hz / 1 Phase / 2200W / 10.0 A (20 Amp Circuit).

Step 4: Warm-up

Energize by turning on the power switch which will illuminate when turned on.

- The display flashes and shows left preset timer during warm-up.
- Pre-heat temperature time will be 40-50 minutes.
- When the setpoint is reached, the display stops flashing and beeps 3 times.

Step 4: Operation

- Simply place product on either side of the grill, close lid and press the desired pre-set time cycle 15 or 27 seconds. After the time cycle is finished press it again to reset the time cycle.

Clean Cycle

To start a clean cycle, push CLEAN button once so the CLEAN LED light is turned on. All preset LED's are turned off, and the temperature setpoint is changed to the clean setpoint of 275°F. This also initiates the cool down to clean setpoint condition as well the display starts flashing until the clean setpoint is reached.

To stop the clean cycle, simply press the CLEAN button once to deactivate the clean cycle. The CLEAN LED is turned off, the preset LED's are restored, the temperature set point is changed to the main setpoint. Again, the warm-up condition is initiated and the display flashes until the cook setpoint is reached.

FOR SERVICE CALL: (800) 624-6717

PROPROCESS CORPORATION

P.O. Box 869 • 7328 Madison St. • Paramount, CA 90723
(562) 531-0305 • (300) 624-6717 • Fax (562) 869-7715



PROPROCESS CORPORATION

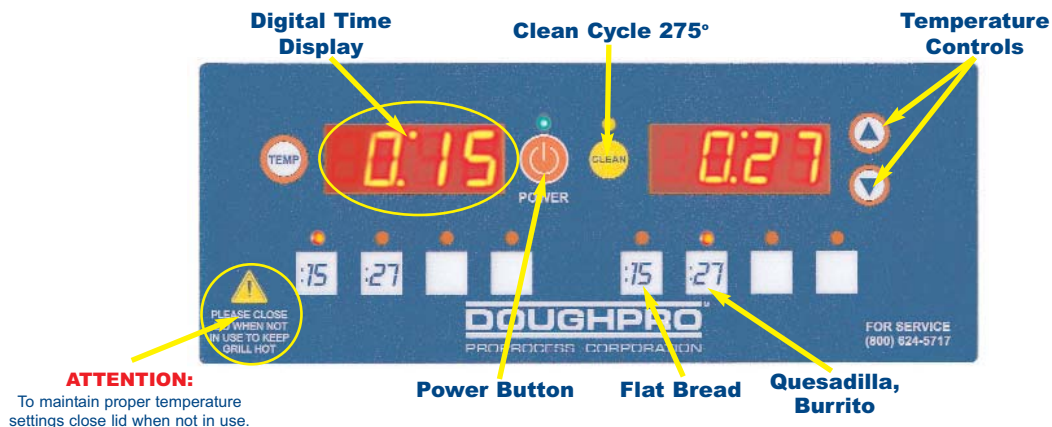
Website: www.doughpro.com E-Mail: info@doughpro.com

DOUGHPRO®

SL1577 Operating Instructions:



1. Press desired time to start the time cycle. After the cycle is finished, press it again to reset the time cycle.



HOW TO FIND TEMPERATURE:

1. To find the temperature of the UPPER PLATENS:
Press the TEMPERATURE button and the ARROW UP button at the same time.
2. To find the temperature of the LOWER PLATENS:
Press the TEMPERATURE button and the ARROW DOWN button at the same time.

FOR SERVICE CALL: (800) 624-6717

PROPROCESS CORPORATION
P.O. Box 869 • 7328 Madison St. • Paramount, CA 90723
(562) 531-0305 • (800) 624-6717 • Fax: (562) 869-7715



DOUGHPRO®
PROPROCESS CORPORATION
Website: www.doughpro.com • Email: info@doughpro.com



Instruction's for Adjusting the Temperature

PRESS and hold the **TEMP** and **ARROW** up buttons **simultaneously** for **5 seconds**.

The current temperature setting will display on the right digital display only.

Using the **ARROW** buttons, you may now adjust the temperature to your desired setting.

Once you have set your desired temperature simply push the **TEMP** button. The digital displays will now read the preset times.



Instruction's for Adjusting the Set-Time

PRESS the desired button you wish to program.

Now press **BOTH** button and **TEMP** buttons **simultaneously** for **5 seconds**.

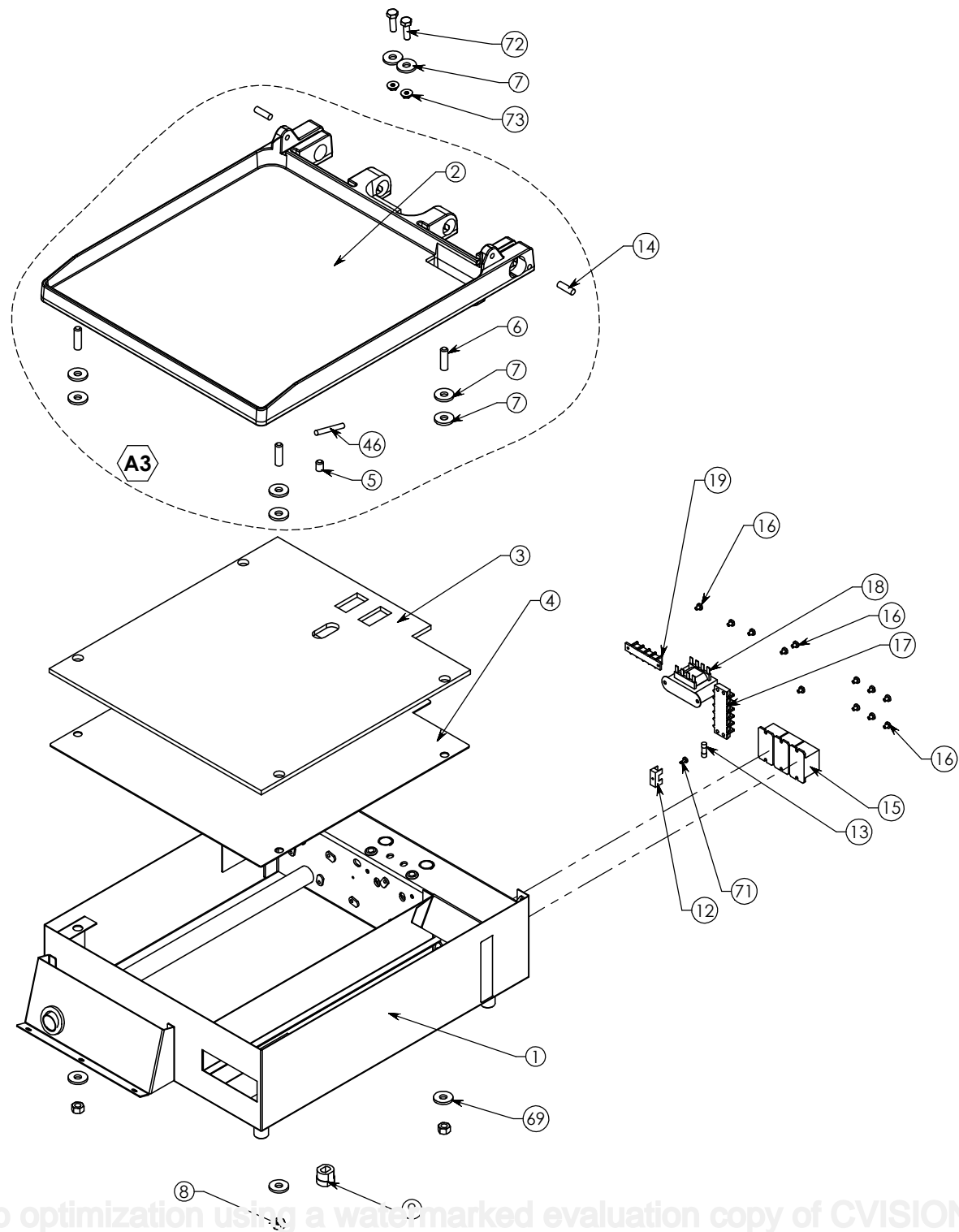
The digital displays will now read their preset times as shown here. Each side is capable of having up to 4 different settings, making a total of 8 set-times.

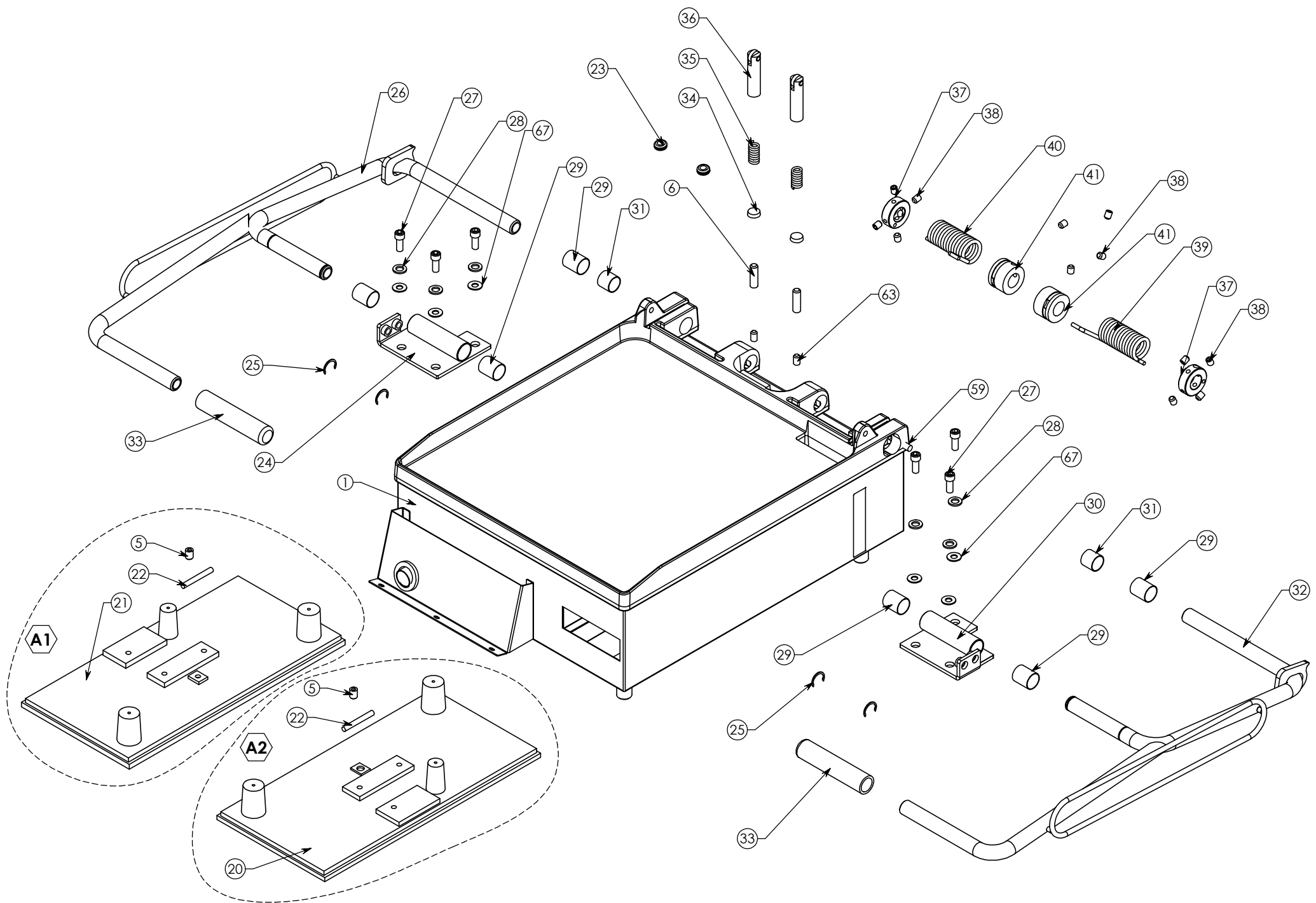


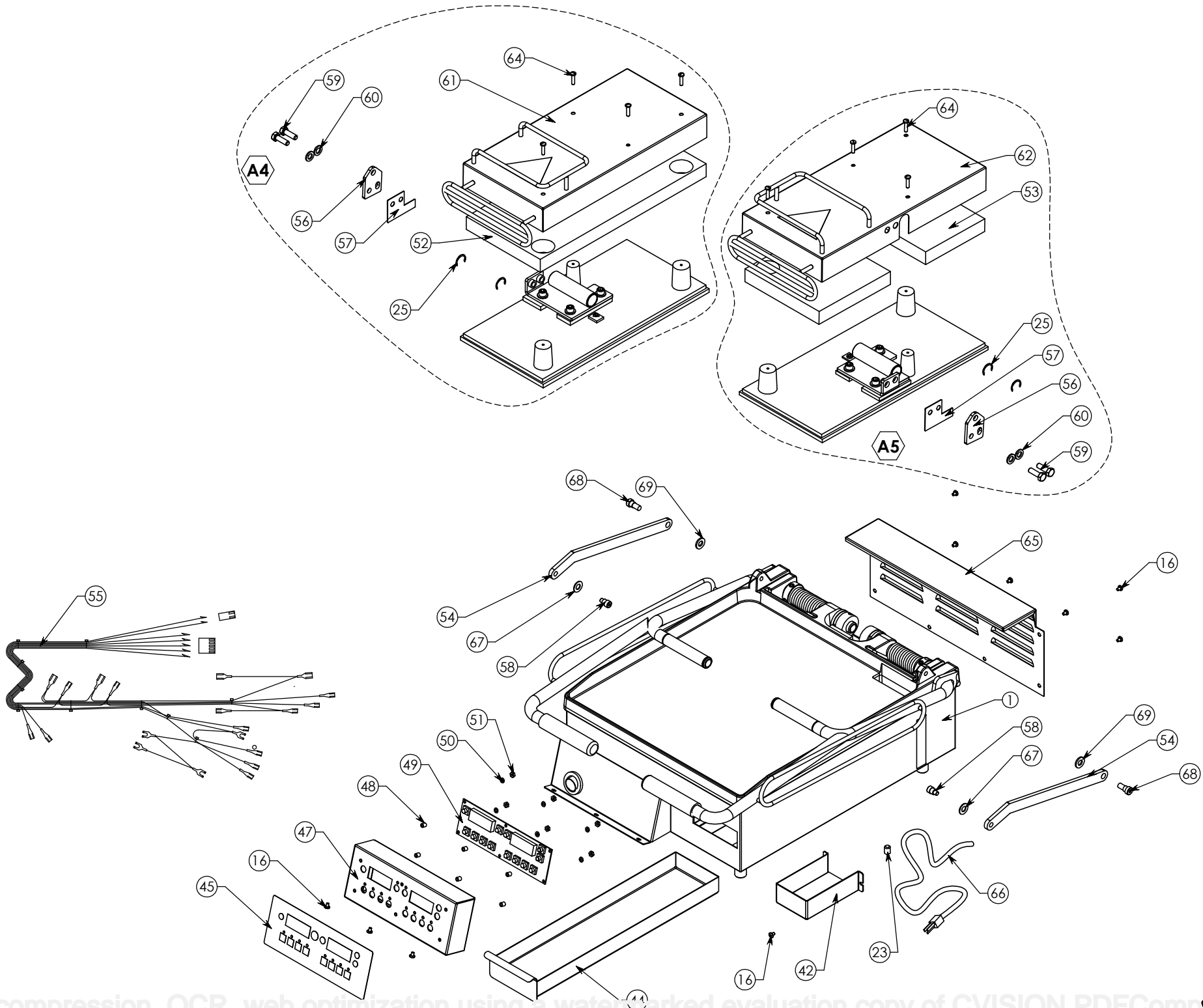
Now using the **ARROW** buttons you can set your desired time.

Once you have set the desired time simply press the **TEMP** button, the unit will display the new set-time.

***IMPORTANT NOTE:** When adjusting the time settings, The **RIGHT SIDE** time buttons control the left side, so the same time you set on the right will automatically be set to the left side accordingly. If you desire an additional set of times you can adjust the left side **AFTER** you have adjusted the right side without effecting the right side settings.







SL1577

| ITEM # | DESCRIPTION | PART NO. | PART NO. | QTY. |
|--------|--|---------------|---------------|------|
| | MODEL SL1577 | 120 VOLT | 220 VOLT | |
| 1 | LOWER WRAP AROUND SHROUD ASSEMBLY | 110115501 | 110115501 | 1 |
| 2 | LOWER PLATEN | 1101007002120 | 1101007002220 | 1 |
| 3 | LOWER PLATEN INSULATION | 110115542 | 110115542 | 1 |
| 4 | COVER, LOWER PLATEN ASSEMBLY | 110115506 | 110115506 | 1 |
| 5 | SET SCREW 3/8-16 x 1/2 | SST381612 | SST381612 | 3 |
| 6 | SCREW SET STAINLESS STEEL 3/8-16 x 1-1/4 | SST3816114S | SST3816114S | 6 |
| 7 | GREEN INSULATION WASHER | C4401 | C4401 | 10 |
| 8 | HEX NUT 3/8-16 | NH3816 | NH3816 | 4 |
| 9 | STRAIN RELIEF | 1244 | 1244 | 1 |
| 12 | FUSE HOLDER 1 AMP | MPPF708 | MPPF708 | 1 |
| 13 | FUSE BUSS 1 AMP | MPPF701R | MPPF701R | 1 |
| 14 | PIN, BACK STOP | 110115543 | 110115543 | 2 |
| 15 | RELAY | 110942520 | 110942520 | 3 |
| 16 | SCREW, PHILL. PAN HEAD 8-32 x 3/8 S.S. | SP83238S | SP83238S | 23 |
| 17 | 5 STAGE TERMINAL BLOCK | 6015 | 6015 | 1 |
| 18 | TRANSFORMER | 11096975 | 11096975 | 1 |
| 19 | 4 STAGE TERMINAL BLOCK | 6994 | 6994 | 1 |
| 20 | UPPER PLATEN RIGHT HAND | 110115540R120 | 110115540R220 | 1 |
| 21 | UPPER PLATEN LEFT HAND | 110115540L120 | 110115540L220 | 1 |
| 22 | SENSOR | 1108881101 | 1108881101 | 2 |
| 23 | GROMMET 5/16 x 1/2 | MH9600K31 | MH9600K31 | 2 |
| 24 | CLEVIS ASSEMBLY LEFT HAND | 110115503 | 110115503 | 1 |
| 25 | E-CLIP, RETAINING RING | LCC3478 | LCC3478 | 4 |
| 26 | HANDLE LEFT ASSEMBLY | 110115522 | 110115522 | 1 |
| 27 | SOCKET HEAD SCREW 5/16-18 x 3/4 | SSH5161834 | SSH5161834 | 6 |
| 28 | WASHER 5/16, LOCK | WL516 | WL516 | 6 |
| 29 | BUSHING TEFLON 1" LONG | 110115541 | 110115541 | 6 |
| 30 | CLEVIS ASSEMBLY RIGHT HAND | 110115504 | 110115504 | 1 |
| 31 | BUSHING TEFLON 3/4" LONG | 110113441 | 110113441 | 2 |
| 32 | HANDLE RIGHT ASSEMBLY | 110115521 | 110115521 | 1 |
| 33 | HANDLE GRIP | 110901168 | 110901168 | 2 |
| 34 | TUBBING PAD | 110115531 | 110115531 | 2 |
| 35 | SPRING, DETENT | 110115536 | 110115536 | 2 |
| 36 | PLUNGER ASSEMBLY | 110115544 | 110115544 | 2 |
| 37 | HANDLE SPRING ADJUSTING COLLAR | 110115528 | 110115528 | 2 |
| 38 | SCREW SET KNURLED CUP POINT 5/16-18 x 3/8 | SST5161838KN | SST5161838KN | 12 |
| 39 | COUNTER BALANCE SPRING RIGHT HAND | 110042307R | 110042307R | 1 |
| 40 | COUNTER BALANCE SPRING LEFT HAND | 110042307L | 110042307L | 1 |
| 41 | HANDLE HOLDER | 110115530 | 110115530 | 2 |
| 42 | COLD PIN COVER | 110115507 | 110115507 | 1 |
| 44 | GREASE TRAY | 110115505 | 110115505 | 1 |
| 45 | OVERLAY | OPROCD301515 | OPROCD301515 | 1 |
| 46 | SENSOR | 1108881102 | 1108881102 | 1 |
| 47 | INSTRUMENT HOUSING ASSEMBLY | 110115511 | 110115511 | 1 |
| 48 | NYLON SPACER 1/4" x .141 x 9/32 LONG | 11090109 | 11090109 | 6 |
| 49 | DIGITAL CONTROL | 1101041052 | 1101041052 | 1 |
| 50 | WASHER 6-32 | WSAE6 | WSAE6 | 6 |
| 51 | NUT 6-32 | NH632 | NH632 | 6 |
| 52 | INSULATION UPPER PLATEN LEFT HAND | 110888251L | 110888251L | 1 |
| 53 | INSULATION UPPER PLATEN RIGHT HAND | 110888251R | 110888251R | 1 |
| 54 | TOP LINK | 110115508 | 110115508 | 2 |
| 55 | WIRE HARNESS | 1101101050 | 1101101050 | 1 |
| 56 | UPPER LEVELING BRACKET | 110115510 | 110115510 | 2 |
| 57 | UPPERLEVELING SHIM | 110115509 | 110115509 | 2 |
| 58 | SHOULDER BOLT, SHOULDER Ø3/8 x 1/4 LG, THREAD 5/16-18 x 1/2 LG | 110115545 | 110115545 | 2 |
| 59 | SCREW BOLT HEX HEAD 5/16-18 X 1.0 S.S.T | BH516181S | BH516181S | 4 |

SL1577

| | | | | |
|----|--|------------|------------|---|
| 60 | WASHER 5/16 FLAT, 5/16 I.D. X .680 O.D. | WSAE516 | WSAE516 | 4 |
| 61 | SHROUD, LEFT ASSEMBLY | 110115518 | 110115518 | 1 |
| 62 | SHROUD, RIGHT ASSEMBLY | 110115517 | 110115517 | 1 |
| 63 | SET SCREW 3/8-16 x 1/2 | SST381612 | SST381612 | 2 |
| 64 | SCREW, SLOTTED PAN HEAD 10-24 x 5/8 STAINLESS STEEL | SPS102458S | SPS102458S | 8 |
| 65 | BACK COVER | 110115512 | 110115512 | 1 |
| 66 | POWER CORD | 1101155174 | 1101155175 | 1 |
| 67 | WASHER FLAT 3/8 x .050 THICK | 110115549 | 110115549 | 2 |
| 68 | SHOULDER BOLT, SHOULDER Ø3/8 x 3/8 LG, THREAD 5/16-18 x 1/2 LG | BSH3814 | BSH3814 | 2 |
| 69 | WASHER FLAT 3/8 x .085 THICK | WSAE38 | WSAE38 | 6 |
| 71 | PHILLIP SCREW 2-56 x 1/4 | SP25614 | SP25614 | 1 |
| 72 | SCREW BOLT HEX HEAD 1/4-20 x 1.0 | BH14201 | BH14201 | 2 |
| 73 | NUT, SERRATED FLANGED HEX 1/4-20 | NHSF1420 | NHSF1420 | 2 |
| A1 | UPPER PLATEN LEFT HAND WITH WIRING | 1101155201 | 1101155202 | 1 |
| A2 | UPPER PLATEN RIGHT HAND WITH WIRING | 1101155203 | 1101155204 | 1 |
| A3 | LOWER PLATEN WITH WIRING | 1101155205 | 1101155206 | 1 |
| A4 | UPPER PLATEN LEFT HAND ASSEMBLY | 1101155101 | 1101155102 | 1 |
| A5 | UPPER PLATEN RIGHT HAND ASSEMBLY | 1101155103 | 1101155104 | 1 |

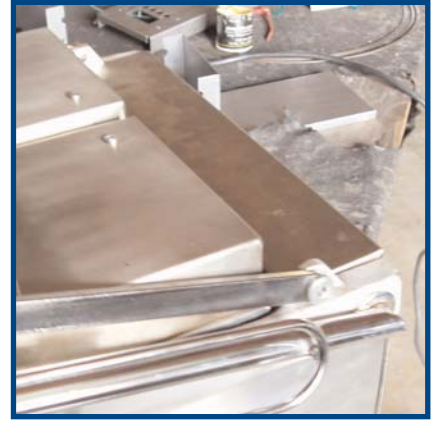
SL1577 features:



Deflecting guard.



Cleaning debris drop.



Deflecting shield.



Spatula holding slot.

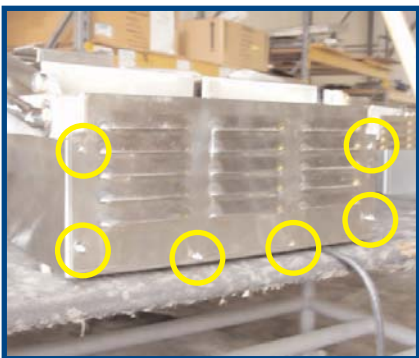


Debris tray

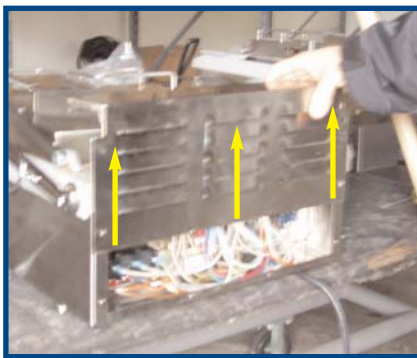


***New leveling system!
Ensures even grilling!***

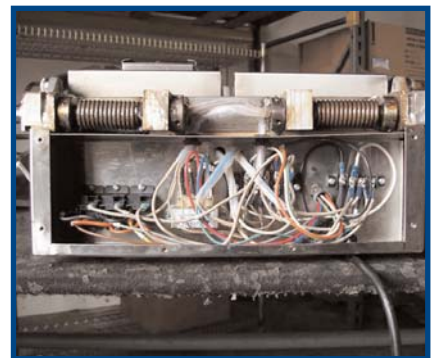
Easy access panel:



***Simply remove six screws on
each side of the rear panel.***



***Pull up the rear panel with both
hands.***



***ALL components are exposed
for easy & fast access.***



PLEASE READ CAREFULLY BEFORE ATTEMPTING TO USE THIS APPLIANCE.

LIMITED MACHINE WARRANTY

WHAT IS COVERED

Proprocess/Doughpro warrants the SL1577, from manufacturing defects in workmanship and material sold within the domestic United States.

HOW LONG DOES THE COVERAGE LAST

One-year warranty for parts and labor. The heating elements on the upper and lower platens have a limited lifetime warranty on the elements.

WHAT WE WILL DO

We will repair or replace the defective SL1577 on normal warranty one-year parts and labor. The heating elements on the upper and lower platen only; will be replaced by next day air service; under the normal one-year warranty. Such repair or replacement will be at the expense of Proprocess Corporation under the normal one-year warranty.

HOW TO GET SERVICE

Contact our Factory to obtain warranty service. Proprocess must issue a return authorization number, and call tag, or find the name and location of a Factory Authorized Service Center nearest you. When calling for service, please furnish the model number, serial number, and a description of the problem.

WHAT THIS WARRANTY DOES NOT COVER

THE WARRANTIES PROVIDED BY PROPROCESS/DOUGHPRO DO NOT APPLY IN THE FOLLOWING INSTANCES:

- Damage due to misuse, abuse, alteration, or accident.
- Improper or unauthorized repairs.
- Submerged in water.
- Dropped.
- Damage in shipment.
- Equipment exported to foreign countries.

FOR SERVICE CALL: (800) 624-6717

PROPROCESS CORPORATION

P.O. Box 869 • 7328 Madison St. • Paramount, CA 90723
(562) 531-0305 • (300) 624-6717 • Fax: (562) 869-7715



DOUGHPRO

PROPROCESS CORPORATION

Website: www.doughpro.com • Email: info@doughpro.com



STEARNS PRODUCT DEVELOPMENT CORPORATION
20281 Harvill Ave, Perris, CA 92570 Tel: (800) 624-6717 - Fax: (951) 657-4594

Warranty & Return Policy

STEARNS PRODUCT DEVELOPMENT CORPORATION warrants all products manufactured by it against defects in workmanship or materials from the date of purchase for a period of (1) year on parts and labor. **This warranty applies to only equipment purchased and used in the United States.**

Exclusions:

- 1. WOOD / GAS FIRED OVENS:** STEARNS PRODUCT DEVELOPMENT CORPORATION warranty applies to the main body of the oven being steel / refractory and insulation shall be free from defects in materials and workmanship for a period of four (4) years from the date of purchase. The gas equipment shall be free from defects in materials and workmanship for a period of one (1) year from the date of purchase. This warranty excludes the tandoori and home oven.
- 2. TANDOORI & HOME OVENS:** STEARNS PRODUCT DEVELOPMENT CORPORATION warrants the Tandoori & Home Oven including gas equipment shall be free from defects in materials and workmanship for a period of one (1) year from the date of purchase.
- 3. Air compressors are excluded from this warranty,** but STEARNS PRODUCT DEVELOPMENT CORPORATION may act as a warranty expeditor in certain instances regarding these compressors. The air compressor manufacturer provides a limited warranty and a copy of this warranty is furnished with all compressors sold by STEARNS PRODUCT DEVELOPMENT CORPORATION. For prompt handling of compressor warranty claims the instructions of the compressor manufacturer must be adhered to.
- 4. Equipment built to special order as well as accessories** are not returnable unless defective within the terms of this warranty.
- 5. In no event shall STEARNS PRODUCT DEVELOPMENT CORPORATION be liable for consequential damages arising out of the failure of any of its products if operated improperly or caused by normal wear or damage by operator abuse.**

Returned Merchandise Policy:

Should it become necessary to return any of the company's products, the following instructions must be adhered to: First, contact our customer service department for approval and a return authorization number. *Please have the serial number of your item available at that time.* All merchandise must be shipped *freight prepaid* by customer or service agency. Subject to the inspection of the product by the company, a restocking charge of 20% of the Net purchased price paid to STEARNS PRODUCT DEVELOPMENT CORPORATION will be assessed. Merchandise may not be returned for credit without *prior written approval* of STEARNS PRODUCT DEVELOPMENT CORPORATION. Collect shipments *will not* be accepted. No returns after 60 days of original shipment date on machines. Purchased parts may not be returned after 30 days. If upon inspection by STEARNS PRODUCT DEVELOPMENT CORPORATION or its authorized agent it is determined the equipment has not been used in an appropriate manner, has been modified, or has not been properly maintained, or has been subject to misuse, misapplication, neglect, abuse, accident, unauthorized modification, damage during transit, delivery, fire, flood, act or war, riot or act of God, then this warranty shall be deemed null and void.

Terms & Conditions:

- Prices indicated in the PRICE LIST are suggested retail prices and are shown in U.S. DOLLARS.
- Terms of Payment: 2% 10 days, NET 30 days.
- NEW ACCOUNTS:** Satisfactory credit information must be provided before open account status can be extended. Unless agreed otherwise, all shipments will be made C.O.D., CASH IN ADVANCE.
- PRICING:** Prices, specifications, model numbers, capacities and accessories are subject to change without notice.
- FREIGHT / ROUTING:** Method of shipment will be determined by STEARNS PRODUCT DEVELOPMENT CORPORATION unless otherwise advised by PURCHASER.
- DAMAGED CLAIMS:** All merchandise shipped at purchaser's risk. Inspection must be made by purchaser at time goods are received. If goods are damaged, the PURCHASER shall request that the agent of the transportation company make a written notation on the proper shipping documents immediately and then file a claim for damage. **GOODS DAMAGED IN SHIPMENT ARE NOT RETURNABLE.**
- RETURNS:** Machines may not be returned after 60 days. Purchased parts may not be returned after 30 days. A restocking fee of 20% will be assessed on non-warranty returns.
- TAXES:** Prices indicated herein DO NOT include State, Federal, Local or foreign taxes or duties, nor do they include fees, permits, insurance or other levies, all of which are the responsibility of the purchaser.
- All orders are subject to acceptance by STEARNS PRODUCT DEVELOPMENT CORPORATION.
- Possession of this price list shall not be considered an offer to sell.