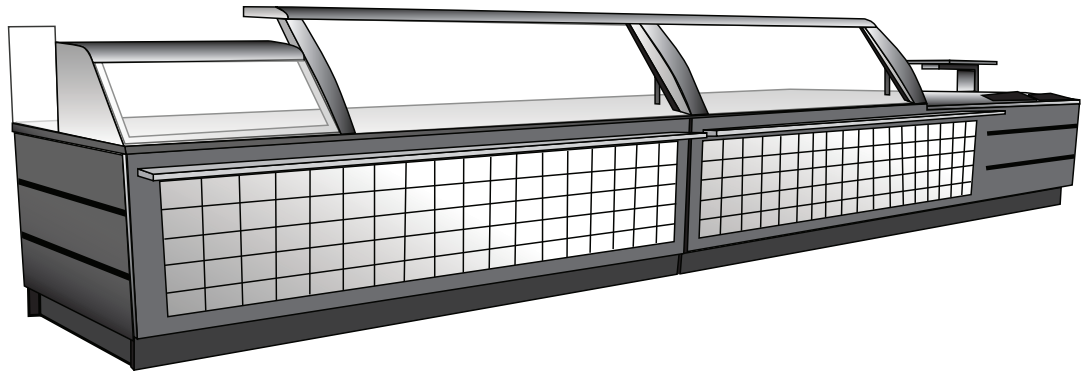




“Your Solutions Partner”

Illustrated Parts List



SUBWAY® FRONT COUNTER

MODEL

SUB-CP-TC

SUB-HF

SUB-CU

This manual is Copyright © 2011 Duke Manufacturing Co. All rights reserved.
Reproduction without written permission is prohibited. Duke is a registered
trademark of the Duke Manufacturing Co.

Duke Manufacturing Co.

2305 N. Broadway
St. Louis, MO 63102
Phone: 314-231-1130
Toll Free: 1-800-735-3853
Fax: 314-231-5074
www.dukemfg.com



TABLE OF CONTENTS

DETERMINING THE MANUFACTURING DATE FROM A PIECE OF EQUIPMENT’S SERIAL NUMBER 3

TRI-CHANNEL – COLD PAN 4
 Figure: PL-1 Tri-Channel – Cold Pan 4
 Table: PL-1 Tri-Channel – Cold Pan 5

PURSE RAIL – FRONT COUNTER 6
 Figure: PL-2 Purse Rail – Front Counter 6
 Table: PL-2 Purse Rail – Front Counter 7

TRI-CHANNEL – COMPRESSOR ASSEMBLY 8
 Figure: PL-3 Tri-Channel Compressor Assembly 8
 Table: PL-3 Tri-Channel Compressor Assembly 9

HOT FOOD PAN 11
 Figure: PL-4 Hot Food Pan 11
 Table: PL-4 Hot Food Pan 11

ALUMINUM DAY COVER – TRI-CHANNEL COLD PAN 12
 Figure: PL-5 Aluminum Day Cover – Tri-Channel Cold Pan 12
 Table: PL-5 Aluminum Day Cover – Tri-Channel Cold Pan 12

ALUMINUM DAY COVER – HOT FOOD PAN 14
 Figure: PL-6 Aluminum Day Cover – Hot Food Pan 14
 Table: PL-6 Aluminum Day Cover – Hot Food Pan 14

STAINLESS STEEL DAY COVER – TRI-CHANNEL COLD PAN and HOT PAN UNITS 17
 Figure: PL-7 Stainless Steel Day Cover – Tri-Channel Cold Pan and Hot Pan Units 17
 Table: PL-7 Stainless Steel Day Cover – Tri-Channel Cold Pan and Hot Pan Units 17

CUSTOMER ASSISTANCE 23

DETERMINING THE MANUFACTURING DATE
FROM A PIECE OF EQUIPMENT'S SERIAL NUMBER

Units Manufactured in Sedalia

Serial Number Example: 01040019

01	04	0019
Specifies the month manufactured	Specifies the year manufactured	Sequential digits

The serial number 01040019 indicates that the unit was built in January of 2004.



TRI-CHANNEL – COLD PAN

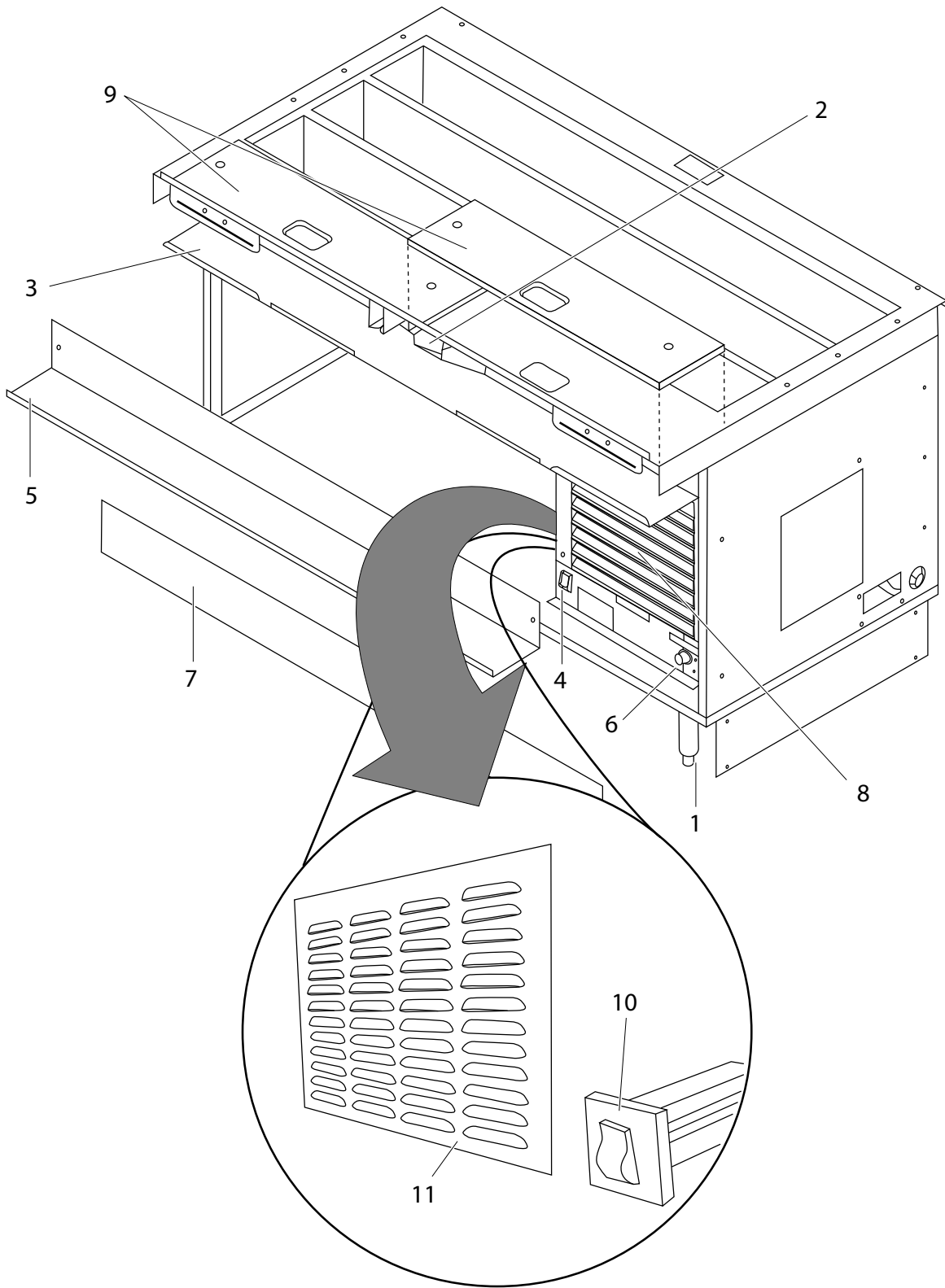


Figure: PL-1 Tri-Channel – Cold Pan

TRI-CHANNEL – COLD PAN

ITEM	QTY.	PART NUMBER	DESCRIPTION
1	4/6	214556	Leg Assembly, Galvanized, 1 ⁵ / ₈ " x 6"
2	1/2	252893	Holder, Knife Assembly
3	1	253477	Shelf, Supply Cold Pan 48" w/Brackets
	1	253478	Shelf, Supply Cold Pan 60" w/Brackets USED UNTIL 12/16/07
	1	253480	Shelf, Supply Cold Pan 74" w/Brackets
	1	253481	Shelf, Supply Cold Pan 86" w/Brackets
	1	RS022480	Cold Pan Funct. Shelf Assembly 48" One Piece USED 12/17/07 & AFTER
	1	RS022481	Cold Pan Funct. Shelf Assembly 60" One Piece (Upper/Lower Together)
	1	RS022482	Cold Pan Funct. Shelf Assembly 74" One Piece
	1	RS022483	Cold Pan Funct. Shelf Assembly 86" One Piece
4	1	212280	Switch, Lighted, Amber (Master Power)
5	1	252341	Shelf, Supply Auxiliary 48" Cold Pan
	1	252264	Shelf, Supply Auxiliary 60" Cold Pan USED UNTIL 12/16/07
	1	252356	Shelf, Supply Auxiliary 74" Cold Pan
	1	252171	Shelf, Supply Auxiliary 86" Cold Pan
6	1	216837	Thermostat, 120VAC Digital Elreha TXV USED 9/17/07 & AFTER
	1	216588	Thermostat, 220VAC Digital Elreha TXV USED 9/17/07 & AFTER
	1	226837	Probe, Digital Elreha TXV USED 9/17/07 & AFTER
	1	254788	Thermostat Kit Mechanical Dial TC (AXV/Tri-Cap) USED UNTIL 9/16/07
	1	2705-2	Knob for 254788 Thermostat
	1	216814	Thermostat, International 220V Dixell USED AFTER 3/13/06
	1	216812	Probe, International 220V Dixell USED AFTER 3/13/06
	1	254787	Thermostat Kit, SW N7 Coldpan 220VAC, 50Hz USED UNTIL 6/2002
7	2	RS000235	Kick plate, Side 48"
	2	RS000236	Kick plate, Side 60"
	2	RS000239	Kick plate, Side 74"
	2	RS000240	Kick plate, Side 86"
8	1	252313	Louver Compressor Cold Pan USED UNTIL 4/6/06
	1	255032	Panel, Louver Tri-channel with Keyholes USED 4/7/06 & AFTER
9	1	215332	Unit Carving Board, 48" x 8" Day Cover
	2	215333	Unit Carving Board, 60" x 8" Day Cover
	2	215334	Unit Carving Board, 74" x 8" Day Cover
	2	215335	Unit Carving Board, 86" x 8" Day Cover
10	1	212309	2 Amp Circuit Breaker, Purse Rail Lights
11	1	255031	Panel, Compressor Side Louvre USED 4/7/06 & AFTER
Not Shown	A/R	SUB-TRI-AXV-KIT	Cap Tube to AXV Conversion Kit
Not Shown	A/R	KIT-COND-TR1380	Kit, Condensor, Tri-Channel 48/60 with AXV Conversion
Not Shown	A/R	KIT-COND-TR1382	Kit, Condensor, Tri-Channel 74/86 with AXV Conversion

Table: PL-1 Tri-Channel – Cold Pan

PURSE RAIL – FRONT COUNTER

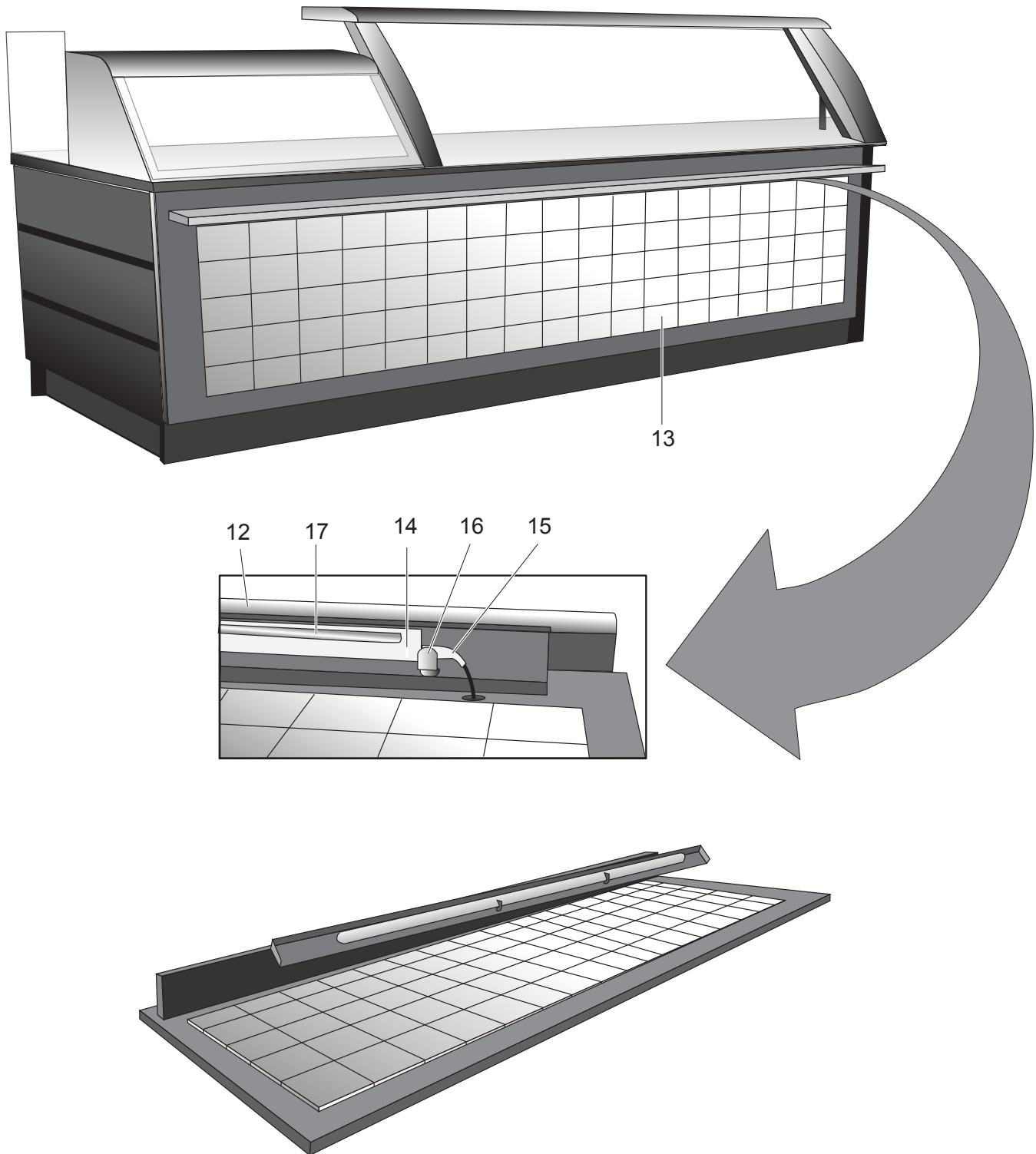


Figure: PL-2 Purse Rail – Front Counter

PURSE RAIL – FRONT COUNTER

ITEM	QTY.	PART NUMBER	DESCRIPTION
12	1	SUB-REPL-PR-LT	Subway Replacement Purse Rail Kit – Left
	1	SUB-REPL-PR-RT	Subway Replacement Purse Rail Kit – Right
	1	SUB-REPL-PR-SGL	Subway Replacement Purse Rail Kit – Single
	1	SUB-PR-CVR-SET	Kit, SS Purse Rail Left/Right Covers (Set of two)
	1	SUB-PR-CVR-SGL	Kit, SS Purse Rail Single Cover
13	A/R	216221	Tile, Mosaic Left/Veggie, Rectangle Basket USED UNTIL 10/2008
		216222	Tile, Mosaic Right/Veggie, Round Basket USED UNTIL 10/2008
		226221	Panel, Pepper USED AFTER 11/2008
		226222	Panel, Tomato USED AFTER 11/2008
HERA T4 LIGHT FIXTURES, REPLACEMENT BULBS, CORDS & CONNECTORS - USED UNTIL 9/2006			
14	A/R	0652010	Fixture, Hera Light, # ES20/220, 220VAC, 18W
	A/R	SUB-HERAFIXT120	Fixture, Hera Light, #ES20/120, 120VAC, 18W – New Pin
15	1	212202	Hera Cord with Plug, 120VAC
	1	214303	Hera Cord with Plug, 220VAC
		225812	Hera Cord with Plug, 120VAC (NEW)
16	A/R	251836	T4 Clip, Light Fixture Mounting, Purse Rail (old)
17	A/R	0651428	Bulb, Hera, Fluorescent Light ES20 (120V/220V), 18W
Not Shown	A/R	214432	Hera, Connector, Direct Light Fixture, 120VAC
	A/R	212305	Hera, Connector, Pin to Pin, 220VAC
LITE CO T4 LIGHT FIXTURES, REPLACEMENT BULBS AND CORDS – USED AFTER 9/2006			
14	A/R	215820	Fixture, LITECO, 22 In, 120VAC, 60Hz
	A/R	215853	Fixture, LITECO, 22 In, 220VAC, 50Hz
15	1	215886	LITECO, Cord with Plug, 110VAC, 6 ft.
	1	215887	LITECO, Cord with Plug, 220VAC, 6 ft.
16	A/R	251836	T4 Clip, Light Fixture Mounting, Purse Rail
17	A/R	215883	Bulb, LITECO, 22 In, 120VAC, 60Hz
	A/R	215855	Bulb, LITECO, 22In, 220VAC, 50Hz
HERA T5 LIGHT FIXTURES, REPLACEMENT BULBS, CORDS & CONNECTORS – USED AFTER 2/2009			
14	A/R	225801	Fixture, Hera T5, 14W, 120VAC
	A/R	225803	Fixture, Hera T5, 28W, 120VAC
	A/R	225805	Fixture, Hera T5, 14W, 230VAC
	A/R	225807	Fixture, Hera T5, 28W, 230VAC
15	1	225812	Hera Cord with Plug, 120VAC
	1	225813	Hera Cord with Plug, 230VAC EU
16	A/R	225824	Clip, Light Fixture Mounting, Purse Rail – T5 Fixtures
17	A/R	225809	Lamp, Hera T5, 14W OSRAM
	A/R	225811	Lamp, Hera T5, 28W OSRAM
Not Shown	A/R	SUB-T5LTS-G120	Assembly, Light Kit, Purse Rail, 120VAC
	A/R	SUB-T5LTS-G220	Assembly, Light Kit, Purse Rail, 220VAC

Table: PL-2 Purse Rail – Front Counter

TRI-CHANNEL – COMPRESSOR ASSEMBLY

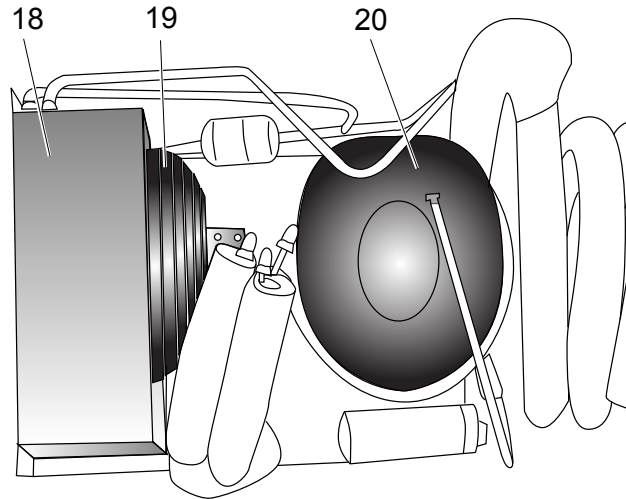


Figure: PL-3 Tri-Channel Compressor Assembly

ITEM	PART NO	DESCRIPTION	QTY
CONDENSING UNITS USED FROM 6/2003 THROUGH 9/12/2006			
18	216879	Condensing Unit, Assembly, 48 & 60 Inch Tri-Cap, 60Hz	1
19	217842	Fan Motor for 216453 Condensing Units	1
20	217844	Compressor for 216453 Condensing Units	1
Not Shown	217813	Protector for 216453 Condensing Units	1
Not Shown	217854	Relay for 216453 Condensing Units	1
Not Shown	217843	Start Cap for 216453 Condensing Units	1
Not Shown	217809	Fan Blade for 216453 Condensing Units	1
CONDENSING UNITS USED FROM 6/2003 THROUGH 9/6/2006			
18	216457	Condensing Unit, Assembly, 48 & 60 Inch Tri-Cap, 50Hz	1
19	217846	Fan Motor for 216457 Condensing Units	1
20	217845	Compressor for 216457 Condensing Units	1
Not Shown	217849	Protector for 216457 Condensing Units	1
Not Shown	217848	Relay for 216457 Condensing Units	1
Not Shown	217847	Start Cap for 216457 Condensing Units	1
Not Shown	217809	Fan Blade for 216457 Condensing Units	1
CONDENSING UNITS USED FROM 6/2003 THROUGH 9/13/2006			
18	KIT-COND-TRI382	Condensing Unit, Assembly, 74 & 86 Inch Tri-Cap, 60Hz	1
19	217851	Fan Motor for 216454 Condensing Units	1
20	217850	Compressor for 216454 Condensing Units	1
Not Shown	217855	Protector for 216454 Condensing Units	1
Not Shown	217854	Relay for 216454 Condensing Units	1
Not Shown	217853	Start Cap for 216454 Condensing Units	1
Not Shown	217852	Fan Blade for 216454 Condensing Units	1

TRI-CHANNEL – COMPRESSOR ASSEMBLY (CONT.)

CONDENSING UNITS USED FROM 6/2003 THROUGH 9/20/2006

18	KIT-COND-TRI889	Condensing Unit, Assembly, 74 & 86, Inch Tri-Cap, 50Hz	1
19	217868	Fan Motor for 216458 Condensing Units	1
20	217840	Compressor for 216458 Condensing Units	1
Not Shown	217865	Protector for 216458 Condensing Units	1
Not Shown	217866	Relay for 216458 Condensing Units	1
Not Shown	217847	Start Cap for 216458 Condensing Units	1
Not Shown	217819	Fan Blade for 216458 Condensing Units	

CONDENSING UNITS USED FROM 9/13/2006 TO PRESENT

18	216879	Condensing Unit, Assembly, 48 & 60 Inch, 60Hz	1
19	217842	Fan Motor for 216879 Condensing Units	1
20	217844	Compressor for 216879 Condensing Units	1
Not shown	217813	Protector for 216879 Condensing Units	1
Not Shown	217814	Relay for 216879 Condensing Units	1
Not Shown	217843	Start Cap for 216879 Condensing Units	1
Not Shown	217809	Fan Blade for 216879 Condensing Units	1
Not Shown	226882	AXV Replacement kit for Serial No: 09061934 and later (9/13/2006 - 9/20/07)	1
Not Shown	216864	TXV Expansion Valve for Serial No. 09072127 and later	1
Not Shown	216414	Refrigerant Drier for Serial No. 09072127 and later.	1

CONDENSING UNITS USED FROM 9/7/2006 TO PRESENT

18	216881	Condensing Unit, Assembly, 48 & 60 Inch, 50Hz	1
19	217846	Fan Motor for 216881 Condensing Units	1
20	217845	Compressor for 216881 Condensing Units	1
Not Shown	217849	Protector for 216881 Condensing Units	1
Not Shown	217848	Relay for 216881 Condensing Units	1
Not Shown	217869	Start Cap for 216881 Condensing Unit	1
Not Shown	217809	Fan Blade for 216881 Condensing Units	1
Not Shown	226882	AXV Replacement kit for Serial No: 09062481 and later (9/7/2006 - 9/20/2007)	1
Not Shown	216864	TXV Expansion Valve for Serial No. 09072127 and later	1
Not Shown	216414	Refrigerant Drier for Serial No. 09072127 and later.	1

Table: PL-3 Tri-Channel Compressor Assembly

TRI-CHANNEL – COMPRESSOR ASSEMBLY (CONT.)

CONDENSING UNITS USED FROM 9/13/2006 TO PRESENT

18	216882	Condensing Unit, Assembly, 74 & 86 Inch, 60Hz	1
19	217851	Fan Motor for 216882 Condensing Units	1
20	217850	Compressor for 216882 Condensing Units	1
Not shown	217855	Protector for 216882 Condensing Units	1
Not Shown	217854	Relay for 216882 Condensing Units	1
Not Shown	217853	Start Cap for 216882 Condensing Units	1
Not Shown	217852	Fan Blade for 216882 Condensing Units	
Not Shown	226882	AXV Replacement kit for Serial No: 09062095 and later (9/13/2006 - 9/20/2007)	1
Not Shown	216864	TXV Expansion Valve for Serial No. 09072127 and later	1
Not Shown	216414	Refrigerant Drier for Serial No. 0972127 and later.	1

CONDENSING UNITS USED FROM 9/21/2006 TO 9/20/2007

18	216821	Condensing Unit, Assembly, 74 & 86 Inch AXV, 50Hz	1
19	217857	Fan Motor for 216883 Condensing Units	1
20	217856	Compressor for 216883 Condensing Units	1
Not Shown	217861	Protector for 216883 Condensing Units	1
Not Shown	217860	Relay for 216883 Condensing Units	1
Not Shown	217827	Start Cap for 216883 Condensing Units	1
Not Shown	217858	Fan Blade for 216883 Condensing Units	1
Not Shown	226882	AXV Replacement Kit for Serial No: 06071411 and later (6/20/2007 - 9/20/2007)	1

CONDENSING UNITS USED FROM 9/21/2007 TO PRESENT

18	216821	Condensing Unit, Assembly, 74 & 86 Inch TXV, .4HP 220VAC 50Hz	1
19	217857	Fan Motor for 216821 Condensing Units	1
20	217856	Compressor for 216821 Condensing Units	1
Not Shown	217861	Protector for 216821 Condensing Units	1
Not Shown	217860	Relay for 216821 Condensing Units	1
Not Shown	217869	Start Cap for 216821 Condensing Units	1
Not Shown	217858	Fan Blade for 216821 Condensing Units	1
Not Shown	216864	TXV Expansion Valve for Serial No. 09072127 and later (9/21/07 to Present)	1
Not Shown	216414	Refrigerant Drier for Serial No. 09072127 and later (9/21/07 to Present)	1

Table: PL-3 Tri-Channel Compressor Assembly (Cont.)

HOT FOOD PAN

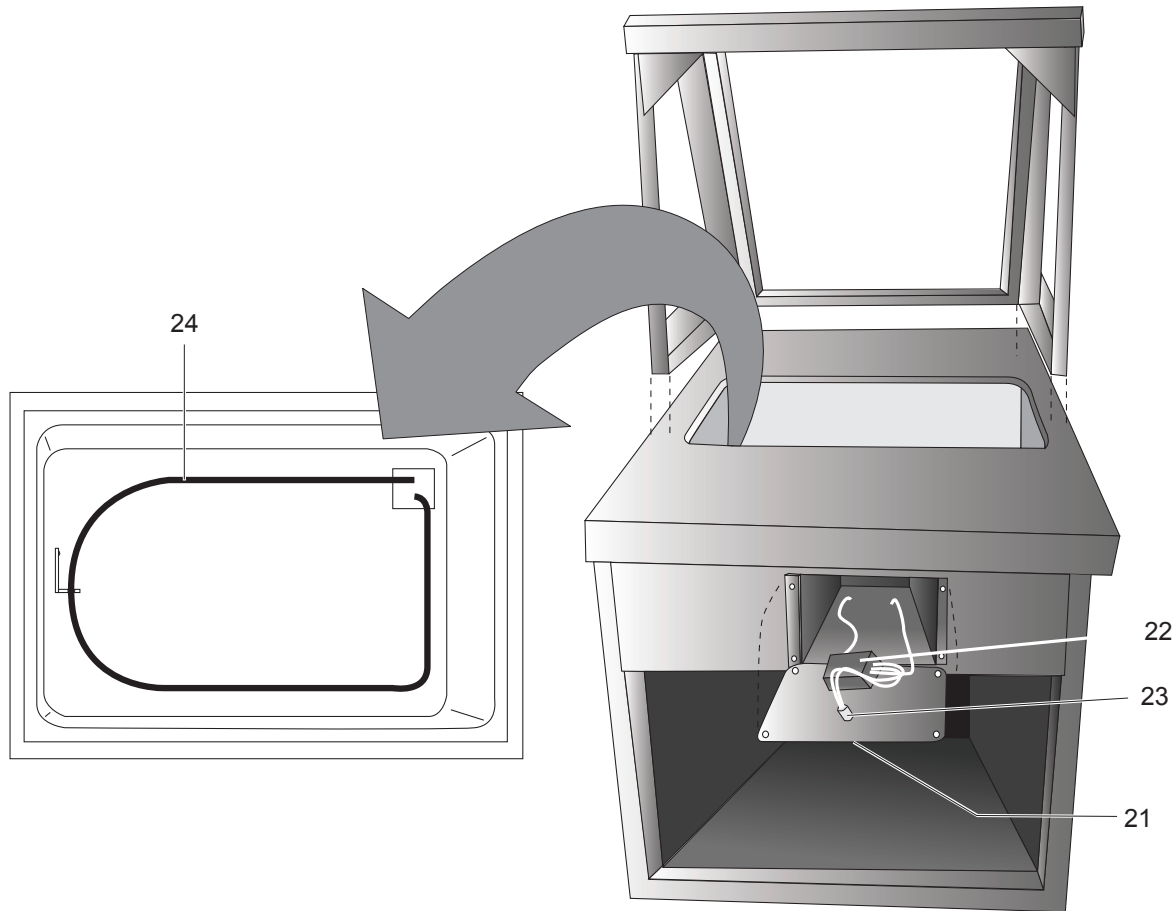


Figure: PL-4 Hot Food Pan

ITEM	QTY.	PART NUMBER	DESCRIPTION
21	1	2190-2	Knob, Electric Thermostat
	1	222082	Knob, Thermostat EGO for Serial Number 0209XXXX and later
22	1	2081-2	Thermostat, Electric
	1	222081	Thermostat, Electric EGO for Serial Number 0209XXXX and later
23	1	215550	Pilot, Amber, Light
24	1	2942-2	Dome, Element 118 VAC 500 Watt
	1	2945-2	Dome, Element 236 VAC 750 Watt VDE APPROVED
Not Shown	1	215336	Carving Board, Hot Food DC
	1	215555	Amber Light for Sealed Well Unit
	1	212935	Element for Sealed Well Unit - 240VAC, 750W
	1	153471	Hi Limit Thermostat – Sealed Well Units Only
	1	154047	Well, Sealed Well with Drain

Table: PL-4 Hot Food Pan

ALUMINUM DAY COVER – TRI-CHANNEL COLD PAN

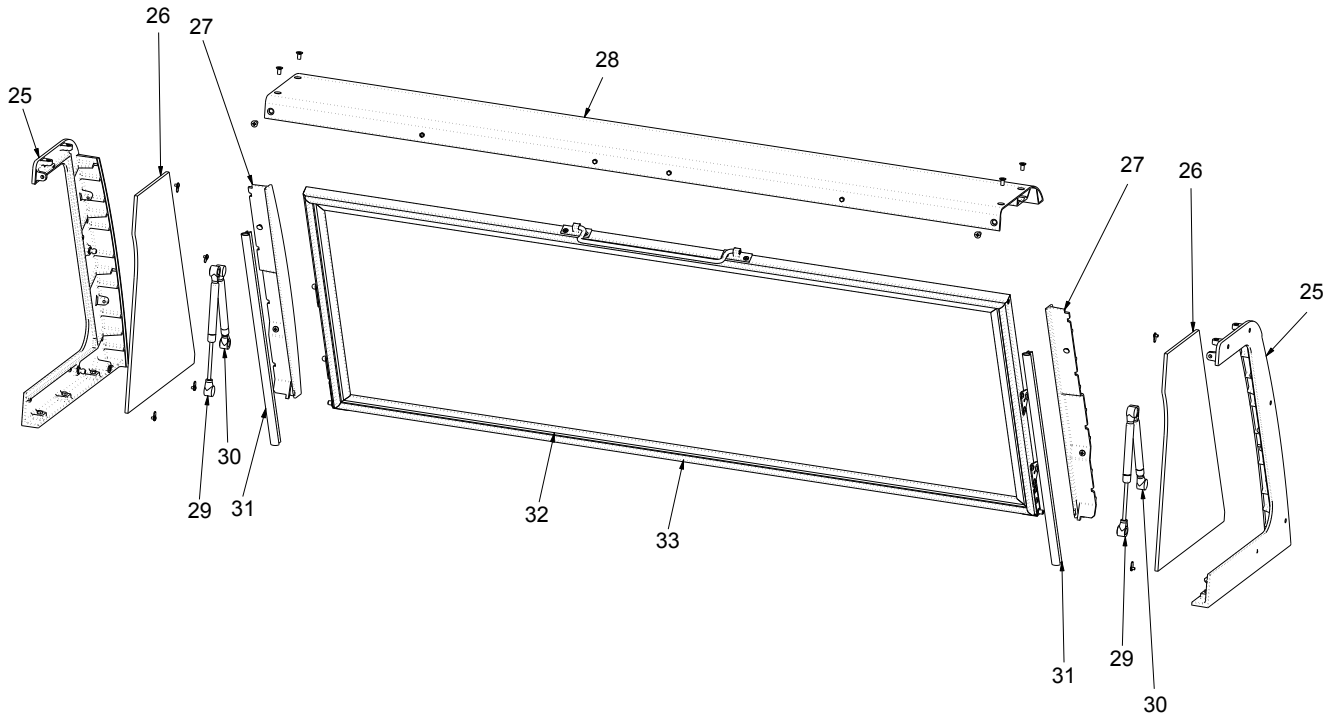


Figure: PL-5 Aluminum Day Cover – Tri-Channel Cold Pan

ITEM	QTY.	PART NUMBER	DESCRIPTION
25	1	REPL-PYLON-LT	Pylon, Aluminum, Left Side w/ Ball Stud & Bronze Bushing
	1	REPL-PYLON-RT	Pylon, Aluminum, Right Side w/ Ball Stud & Bronze Bushing
26	2	215763	End Glass SDGC
27	1	215727	Filler, Left SDGC
	1	215728	Filler, Right SDGC
28	1	255113	Assy, Shelf Drop 48 SDGC 120V – includes Fixtures, Wiring & Shelf
	1	255114	Assy, Shelf Drop 60 SDGC 120V
	1	255115	Assy, Shelf Drop 74 SDGC 120V
	1	255116	Assy, Shelf Drop 86 SDGC 120V
	1	255125	Assy, Shelf Drop 48 SDGC 220V
	1	255126	Assy, Shelf Drop 60 SDGC 220V
	1	255127	Assy, Shelf Drop 74 SDGC 220V
	1	255128	Assy, Shelf Drop 86 SDGC 220V

Table: PL-5 Aluminum Day Cover – Tri-Channel Cold Pan

ALUMINUM DAY COVER – TRI-CHANNEL COLD PAN (CONT.)

ITEM	QTY.	PART NUMBER	DESCRIPTION
29	2	214305	Gas Piston Cylinder 40 Lb. – 48" & 60" Day Covers
	2	214332	Gas Piston Cylinder 50 Lb. – 74" & 86" Day Covers
Not Shown	4	214309	Ball Mount on Pylon
Not Shown	4	214308	Ball Stud Bracket
30	2	214306	Gas Dampening Cylinder – All Sizes
	1	SHOCK-KIT-48/60	Kit to replace all Shocks/Dampeners/Mounting Hardware for 48" & 60" Day Cover
	1	SHOCK-KIT-74/86	Kit to replace all Shocks/Dampeners/Mounting Hardware for 74" & 86" Day Cover
Not Shown	A/R	215774	New Style Ball Stud (Pylon)
31	2	215765/214543	Extrusion, Collapsible Gasket Assembly
32	1	255046	Glass Cover Assembly, Drop Down 48" SDGC
	1	255047	Glass Cover Assembly, Drop Down 60" SDGC
	1	255048	Glass Cover Assembly, Drop Down 74" SDGC
	1	255049	Glass Cover Assembly, Drop Down 86" SDGC
33	1	6726-2	Bulb Gasket for 48" Day Cover
	1	6727-2	Bulb Gasket for 60" Day Cover
	1	6728-2	Bulb Gasket for 74" Day Cover
	1	6729-2	Bulb Gasket for 86" Day Cover
Not Shown	1	217260	Aluminum Touch-up Paint (Spray)
Not Shown	1	217261	Aluminum Touch-up Paint (Bottle)
Not Shown	1	215820	LITECO T4 Light Fixture, 120VAC, 16W USED UNTIL 2/2009
	1	215853	LITECO T4 Light fixture, 220VAC, 16W USED UNTIL 2/2009
	1	225801	Hera T5 Light Fixture, 120VAC 14W USED AFTER 2/2009
	1	225803	Hera T5 Light Fixture, 120VAC 28W USED AFTER 2/2009
	1	225805	Hera T5 Light Fixture, 230VAC, 14W USED AFTER 2/2009
	1	225807	Hera T5 Light Fixture 230VAC, 28W USED AFTER 2/2009
	1	225800	Hera T5 Light Fixture 120VAC, 8W USED AFTER 2/2009
	1	225804	Hera T5 Light Fixture 230VAC, 8W USED AFTER 2/2009
	A/R	215883	LITECO T4 Replacement Bulb 120VAC 16W USED UNTIL 2/2009
A/R	215855	LITECO T4 Replacement Bulb, 220VAC 16W USED UNTIL 2/2009	
A/R	225809	Hera T5 Replacement Bulb, 14W OSRAM USED AFTER 2/2009	
A/R	225808	Hera T5 Replacement Bulb, 8W OSRAM USED AFTER 2/2009	
A/R	225811	Hera T5 Replacement Bulb, 28W OSRAM USED AFTER 2/2009	

Table: PL-5 Aluminum Day Cover – Tri-Channel Cold Pan (Cont.)

ALUMINUM DAY COVER – HOT FOOD PAN

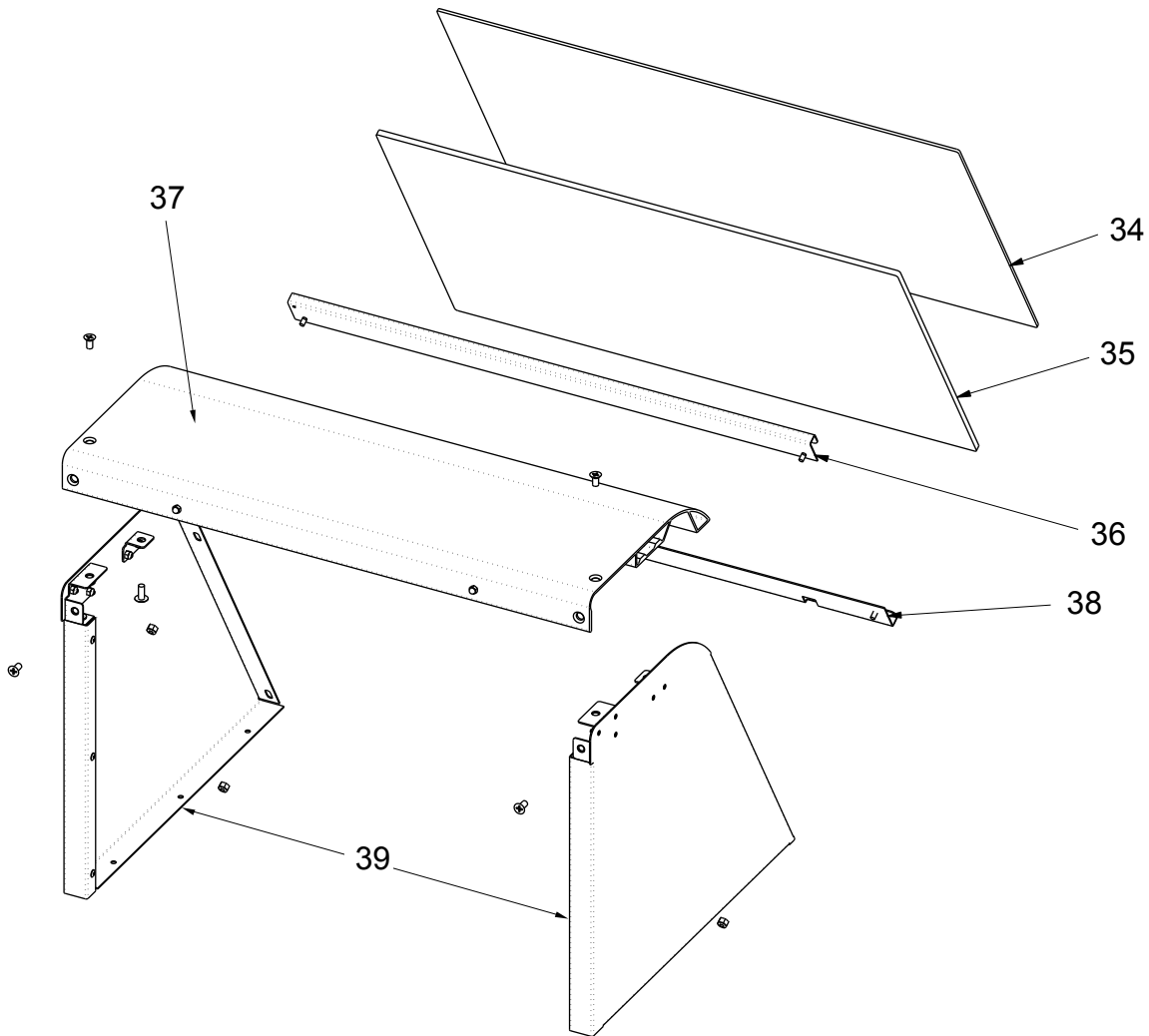


Figure: PL-6 Aluminum Day Cover – Hot Food Pan

ITEM	QTY.	PART NUMBER	DESCRIPTION
34	1	255401	PLEXI 1/4" 16.5" HFC-CLEAR
	1	255402	PLEXI 1/4" 18" HFC-CLEAR
	1	255403	PLEXI 1/4" 19" HFC-CLEAR
	1	255404	PLEXI 1/4" 24" HFC-CLEAR
	1	255405	PLEXI 1/4" 25" HFC-CLEAR
	1	255406	PLEXI 1/4" 36" HFC-CLEAR
	1	255407	PLEXI 1/4" 37" HFC-CLEAR
	1	255408	PLEXI 1/4" 48" HFC-CLEAR
	1	255409	PLEXI 1/4" 49" HFC-CLEAR
	1	255410	PLEXI 1/4" 60" HFC-CLEAR
	1	255411	PLEXI 1/4" 61" HFC-CLEAR

– The 1/4" pieces should be in front per Subway.
Changed 11/06.

If ordering new replacement parts: both clear and frosted pieces must be ordered if the order shipped prior to 11/06.

Table: PL-6 Aluminum Day Cover – Hot Food Pan

ALUMINUM DAY COVER – HOT FOOD PAN

ITEM	QTY.	PART NUMBER	DESCRIPTION
35	1	255412	PLEXI 1/8" 16.5" HFC-FROSTED
	1	255413	PLEXI 1/8" 18" HFC-FROSTED
	1	255414	PLEXI 1/8" 19" HFC-FROSTED
	1	255415	PLEXI 1/8" 24" HFC-FROSTED
	1	255416	PLEXI 1/8" 25" HFC-FROSTED
	1	255417	PLEXI 1/8" 36" HFC-FROSTED
	1	255418	PLEXI 1/8" 37" HFC-FROSTED
	1	255419	PLEXI 1/8" 48" HFC-FROSTED
	1	255420	PLEXI 1/8" 49" HFC-FROSTED
	1	255421	PLEXI 1/8" 60" HFC-FROSTED
	1	255422	PLEXI 1/8" 61" HFC-FROSTED
	36	1	255182
1		255183	Rail, Top 18" HFC
1		255184	Rail, Top 19" HFC
1		255185	Rail, Top 24" HFC
1		255186	Rail, Top 25" HFC
1		255187	Rail, Top 36" HFC
1		255188	Rail, Top 37" HFC
1		255189	Rail, Top 48" HFC
1		255190	Rail, Top 49" HFC
1		255191	Rail, Top 60" HFC
1		255192	Rail, Top 61" HFC
37		1	255129
	1	255130	Assembly, Shelf 18" HFC 120V
	1	255301	Assembly, Shelf 18" HFC 220V
	1	255131	Assembly, Shelf 19" HFC 120V
	1	255302	Assembly, Shelf 19" HFC 220V
	1	255132	Assembly, Shelf 24" HFC 120V
	1	255140	Assembly, Shelf 24" HFC 220V
	1	255133	Assembly, Shelf 25" HFC 120V
	1	255141	Assembly, Shelf 25" HFC 220V
	1	255134	Assembly, Shelf 36" HFC 120V
	1	255142	Assembly, Shelf 36" HFC 220V
	1	255135	Assembly, Shelf 37" HFC 120V
	1	255143	Assembly, Shelf 37" HFC 220V
	1	255136	Assembly, Shelf 48" HFC 120V
	1	255144	Assembly, Shelf 48" HFC 220V
1	255137	Assembly, Shelf 49" HFC 120V	
1	255145	Assembly, Shelf 49" HFC 220V	

– The 1/8" pieces should be in rear per Subway. Changed 11/06.

If ordering new replacement parts: both clear and frosted pieces must be ordered if the order shipped prior to 11/06.

All others include lights/wires

Table: PL-6 Aluminum Day Cover – Hot Food Pan (Cont.)

ALUMINUM DAY COVER – HOT FOOD PAN (CONT.)

ITEM	QTY.	PART NUMBER	DESCRIPTION
37 (cont.)	1	255138	Assembly, Shelf 60" HFC 120V
	1	255139	Assembly, Shelf 61" HFC 120V
	1	255147	Assembly, Shelf 61" HFC 220V
38	1	255171	Rail, Bottom 16.5" HFC
	1	255172	Rail, Bottom 18" HFC
	1	255173	Rail, Bottom 19" HFC
	1	255174	Rail, Bottom 24" HFC
	1	255175	Rail, Bottom 25" HFC
	1	255176	Rail, Bottom 36" HFC
	1	255177	Rail, Bottom 37" HFC
	1	255178	Rail, Bottom 48" HFC
	1	255179	Rail, Bottom 49" HFC
	1	255180	Rail, Bottom 60" HFC
	1	255181	Rail, Bottom 61" HFC
39	1	255148	Assembly, Pylon, Right
	1	255149	Assembly, Pylon, Left
Not Shown	1	215864	LITECO T4 Light Fixture 120VAC, 8W USED UNTIL 2/2009
	1	215865	LITECO T4 Light Fixture, 220VAC, 8W USED UNTIL 2/2009
	1	215850	LITECO T4 Light Fixture 120VAC, 12W USED UNTIL 2/2009
	1	215852	LITECO T4 Light Fixture 220VAC, 12W USED UNTIL 2/2009
	1	225800	Hera T5 Light fixture, 120VAC, 8W USED AFTER 2/2009
	1	225804	Hera T5 Light Fixture, 230VAC, 8W USED AFTER 2/2009
	1	225801	Hera T5 Light Fixture 120VAC, 14W USED AFTER 2/2009
	1	225805	Hera T5 Light Fixture 230VAC, 14W USED AFTER 2/2009
	1	225803	Hera Light Fixture 120VAC, 28W USED AFTER 2/2009
	1	225807	Hera T5 Light Fixture 230VAC, 28W USED AFTER 2/2009
Not Shown	A/R	215885	LITECO T4 Replacement Bulb, 120VAC, 8W USED UNTIL 2/2009
	A/R	215866	LITECO T4 Replacement Bulb, 220VAC, 8W USED UNTIL 2/2009
	A/R	215884	LITECO T4 Replacement Bulb, 120VAC, 12W USED UNTIL 2/2009
	A/R	215854	LITECO T4 Replacement Bulb, 220VAC, 12W USED UNTIL 2/2009
	A/R	225808	Hera Replacement Bulb 8W OSRAM
	A/R	225809	Hera T5 Replacement Bulb 14W OSRAM USED AFTER 2/2009
	A/R	225811	Hera T5 Replacement Bulb 28W OSRAM USED AFTER 2/2009

Table: PL-6 Aluminum Day Cover – Hot Food Pan (Cont.)

STAINLESS STEEL DAY COVER – TRI-CHANNEL COLD PAN AND HOT PAN UNITS

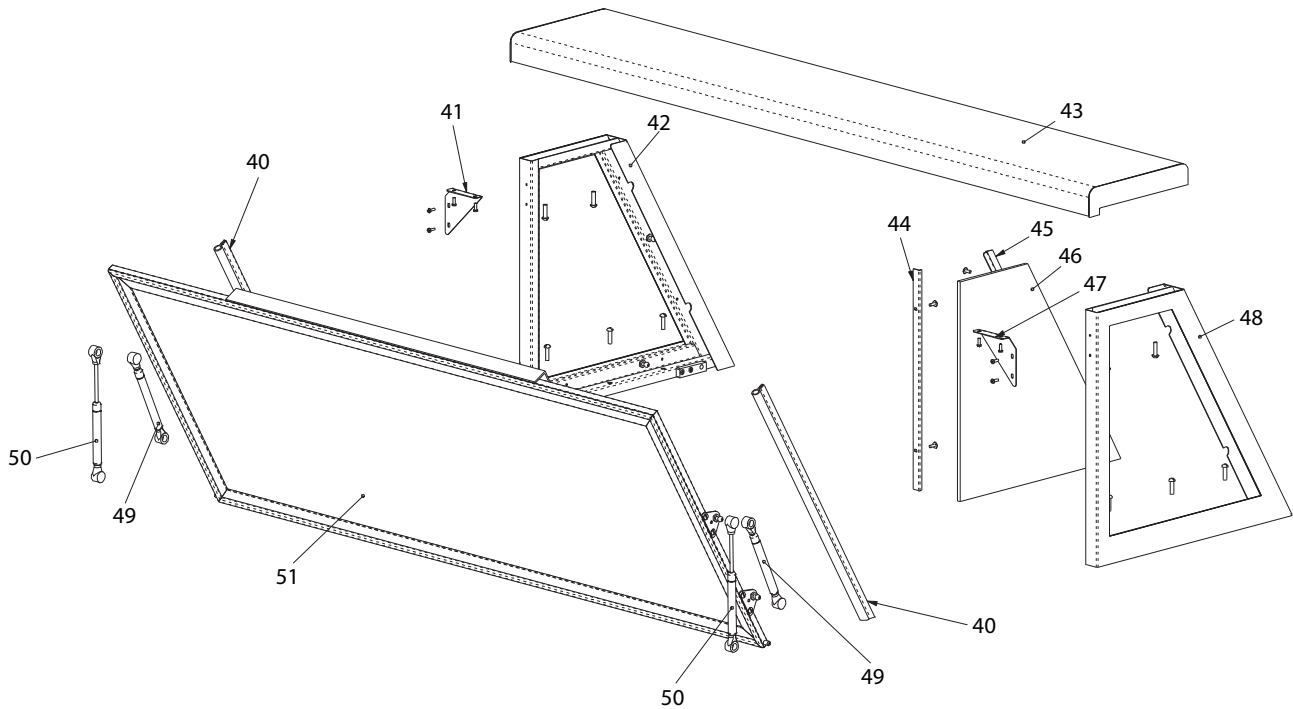


Figure: PL-7 Stainless Steel Day Cover – Tri-Channel Cold Pan and Hot Pan Units

ITEM	QTY.	PART NUMBER	DESCRIPTION
40	2	214932	Extrusion, Collapsible Gasket
41	1	252929	Bracket, Reinforcement , Anti Sway
42	1	252960	Assembly, Pylon Drop Left
	1	252963	Assembly, Pylon Fixed Left
43	1	252993	Assembly, Shelf 37" Fixed, 120VAC
	1	252994	Assembly, Shelf 49" Fixed, 120VAC
	1	252995	Assembly, Shelf 61" Fixed, 120VAC
	1	252996	Assembly, Shelf 48" Drop, 120VAC
	1	252997	Assembly, Shelf 60" Drop, 120VAC
	1	252998	Assembly, Shelf 74" Drop, 120VAC
	1	252999	Assembly, Shelf 86" Drop, 120VAC
	1	253002	Assembly, Shelf 37" Fixed, 220VAC
	1	253003	Assembly, Shelf 49" Fixed, 220VAC
	1	253004	Assembly, Shelf 61" Fixed, 220VAC
	1	253005	Assembly, Shelf 48" Drop, 220VAC
	1	253006	Assembly, Shelf 60" Drop, 220VAC
	1	253007	Assembly, Shelf 74" Drop, 220VAC
	1	253008	Assembly, Shelf 86" Drop, 220VAC

Must identify if guard is a Left or Right for wiring direction

Table: PL-7 Stainless Steel Day Cover – Tri-Channel Cold Pan and Hot Pan Units

**STAINLESS STEEL DAY COVER –
TRI-CHANNEL COLD PAN AND HOT PAN UNITS (CONT.)**

ITEM	QTY.	PART NUMBER	DESCRIPTION
44	1	252931	Angle Glass Retainer Rear
45	1	252933	Angle Glass Retainer Front
46	1	214114	Glass End Pylon
47	1	252930	Bracket, Reinforcement, Anti Sway
48	1	252961	Assembly, Pylon Drop Right
	1	252963	Assembly, Pylon Fixed Right
49	2	214306	Gas Dampening Cylinder
50	2	214305	Gas Piston Cylinder
51	1	252986	Guard, Drop Nor-Fab 60" Assembly
	1	214362	Guard, Fixed Hot Pan Nor-Fab 49" Assembly
Not Shown	1	212066-2	Toggle Switch
HERA T4 LIGHT FIXTURES, REPLACEMENT BULBS, CORDS & CONNECTORS			
Not Shown	A/R	0652010	Fixture, Hera Light, # ES20/220, 220VAC, 18W
Not Shown	A/R	SUB-HERAFIXT120	Fixture, Hera Light, #ES20/120, 120VAC, 18W – New Pin
Not Shown			
Not Shown	1	212202	Hera Cord with Plug, 120VAC
Not Shown	1	214303	Hera Cord with EU Plug, 220VAC
Not Shown		225812	Hera Cord with Plug, 120VAC (NEW)
Not Shown			
Not Shown	A/R	214519	T4 Clip, Light Fixture Mounting (old)
Not Shown			
Not Shown	A/R	0651428	Bulb, Hera, Fluorescent Light ES20 (120V/220V), 18W
Not Shown			
Not Shown	A/R	214432	Hera, Connector, Direct Light Fixture, 120VAC
Not Shown	A/R	212305	Hera, Connector, Pin to Pin, 220V (New)
Not Shown	A/R	216117	Hera T4 Lens Cover for 18W Bulb

Table: PL-7 Stainless Steel Day Cover – Tri-Channel Cold Pan and Hot Pan Units (Cont.)

HERA T5 LIGHT FIXTURES

Use only when upgrading all T4 fixtures to T5 lighting

ITEM	QTY.	PART NUMBER	DESCRIPTION
Not Shown	A/R	SUB-T5LTS-A120	Hera T5 Light Kit, 15-29.5 Inch, 120VAC for 25 Inch Day Covers
	A/R	SUB-T5LTS-A220	Hera T5 Light Kit, 15-29.5 Inch, 230VAC for 25 Inch Day Covers
	A/R	SUB-T5LTS-B120	Hera T5 Light Kit, 30-47 Inch, 120VAC for 25 Inch Day Covers
	AR	SUB-T5LTS-B220	Hera T5 Light Kit, 30-47 Inch, 230VAC for 25 Inch Day Covers
	A/R	SUB-T5LTS-C120	Hera T5 Light Kit, 47.5-51 Inch, 120VAC for 48 Inch Day Covers
	A/R	SUB-T5LTS-C220	Hera T5 Light Kit, 47.5-51 Inch, 230VAC for 48 Inch Day Covers
	A/R	SUB-T5LTS-D120	Hera T5 Light Kit, 51.5-83.5 Inch, 120VAC for 60 Inch Day Covers
	A/R	SUB-T5LTS-D220	Hera T5 Light Kit, 51.5-83.5 Inch, 230VAC for 60 Inch Day Covers
	A/R	SUB-T5LTS-E120	Hera T5 Light Kit, 64-75.5 Inch, 120VAC for 74 Inch Day Covers
	A/R	SUB-T5LTS-E220	Hera T5 Light Kit, 64-75.5 Inch, 230VAC for 74 Inch Day Covers
	A/R	SUB-T5LTS-F120	Hera T5 Light Kit, 76+ Inch, 120VAC for 86 Inch Day Covers
	A/R	SUB-T5LTS-F220	Hera T5 Light Kit, 76+ Inch, 230VAC for 86 Inch Day Covers
	A/R	SUB-T5LTS-G120	Hera T5 Light Kit, 120VAC For Purse Rails
	A/R	SUB-T5LTS-G220	Hera T5 Light Kit, 230VAC For Purse Rails

Table: PL-7 Stainless Steel Day Cover – Tri-Channel Cold Pan and Hot Pan Units (Cont.)



NOTES

NOTES



NOTES

CUSTOMER ASSISTANCE

To aid in reporting this unit in case of loss or theft, please record below the model number and serial number located on the unit. We also suggest you record all the information listed and retain for future reference.

MODEL NUMBER _____	SERIAL NUMBER _____
DATE OF PURCHASE _____	
DEALER _____	TELEPHONE _____
SERVICER _____	TELEPHONE _____

NORTH AMERICA & LATIN AMERICA

Duke Manufacturing Company
2305 N. Broadway
St. Louis, MO 63102
Phone: 314-231-1130
Toll Free: 1-800-735-3853
Fax: 314-231-5074

UK & IRELAND

Duke Mfg UK
Duke House
Unit 10, Greendale Business Park
Woodbury Salterton
Exeter
Devon - UK EX5 1EW
Tel: 01395 234140
FAX: 01395 234154

CONTINENTAL EUROPE

EU Headquarter Office
Duke Manufacturing
CR s.r.o. Vitavska 219,
Stechovice 25207
Phone: +420 257-741-033

ASIA

Asia Office
#1905 19F First Trade Tower
#985 Dong Fang Road Pudong
Shanghai 200122 China
Phone: 86 21 6876 9272

TO ACCESS INTERNET: www.dukemfg.com

Please provide the following information when you write or call: model number, serial number, date of purchase, your complete mailing address (including zip code), and description of the problem.



“Your Solutions Partner”

Duke Manufacturing Company

2305 N. Broadway
St. Louis, MO 63102
Phone: 314-231-1130
Toll Free: 1-800-735-3853
Fax: 314-231-5074
www.dukemfg.com

EU Headquarter Office
Duke Manufacturing
CR s.r.o. Vitavska 219,
Stechovice 25207
Phone: +420 257-741-033

Duke Mfg UK
Duke House
Unit 10, Greendale Business Park
Woodbury Salterton
Exeter
Devon - UK EX5 1EW
Tel: 01395 234140
FAX: 01395 234154

Asia Office
#1905 19F First Trade Tower
#985 Dong Fang Road Pudong
Shanghai 200122 China
Phone: 86 21 6876 9272
