



Products for Foodservice

Edlund Company, Inc., 159 Industrial Parkway, Burlington, VT 05401 802-862-9661

PRODUCT MANUAL- M081 REV. A

MODEL 700 & 700T

CROWN OPENER MOD. NO. VI.

Please read thoroughly before operation and keep for future reference.

WARRANTY VOID IF SERVICED BY OTHER THAN FACTORY AUTHORIZED AGENCY.



INSTRUCTIONS FOR USE

Your model #700 Crown Punch is shipped to you ready for use.

If necessary to install handle:

1. Loosen or remove spring detent screw (S068) and stop screw (S044) so that detent will not interfere with handle installation
2. Remove hex head screw (S040) and washer (W030) from end of shaft (S114)
3. Hold ram (R012) and/or knife (A700) in full up position while placing square hole in handle over squared end of shaft. **Handle must be in full up position to properly mate with full up position of ram.** Be sure fully rounded portion at end of handle is forward, relief to rear.
4. Replace washer and hex head screw and fully tighten.
5. Replace and/or tighten spring detent screws.
6. Test handle operation.
7. If handle will not return to full up position against column, or if knife sticks out below guard ring when handle is up, reinstall handle in proper mating position (Steps 1-6).

Start-up Procedure:

1. We recommend that you bolt, screw, or clamp machine to table. (Hole provided in rear of base plate behind vertical column.) "C"-clamp may be used over rear edge of table.
2. Check height of head in relation to can height. This height was factory set for your can size. Bottom of guard ring should be approximately 3/16" above top of can. Head height is adjustable by loosening large hex screws behind column and manually lifting or lowering head assembly. Be sure hex screws are tightened securely to prevent slippage of head during can operation.
3. Insert can against locating tab on guard ring and pull handle firmly and quickly for easiest can opening.

Lid Removal:

The can lid remains jammed in knife until lid stripper pins push it back into can during knife withdrawal. If lid remains in knife, make sure stripper pins (p016) are in place and that knife is retracting all the way. Knife may be loose. Check knife-retaining clip (c084) for wear.

Splashing:

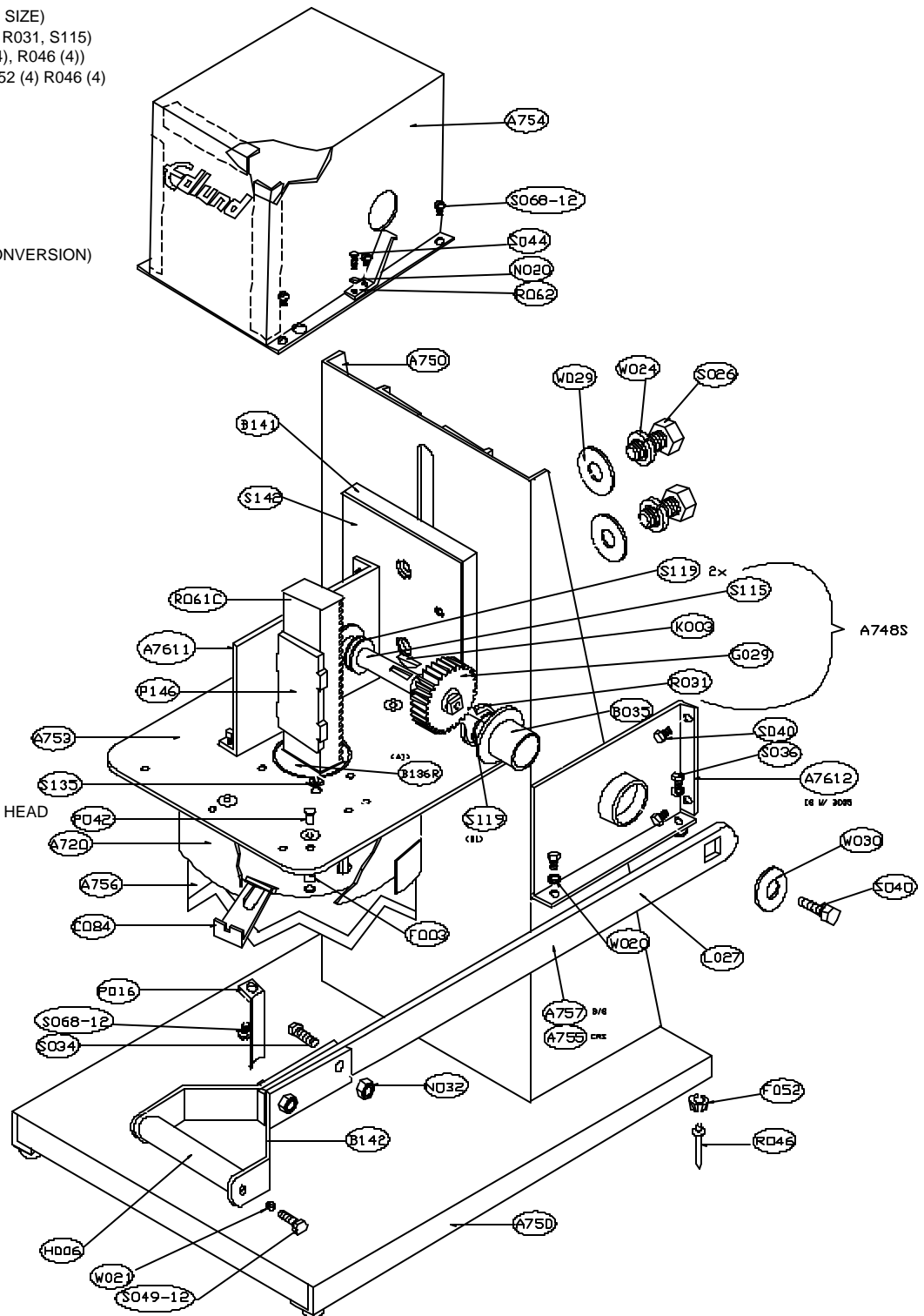
If excessive product splash is encountered, can lid is probably being carried down into product. Raise head by trial error until minimum penetration of knife is achieved. Can lid should not move down into can by more than 1/16" after breakthrough. Can lid should not move down into can by more than 1/16" after breakthrough. When properly adjusted, make note of guard ring height above top of can to speed future set-up.



Products for Foodservice

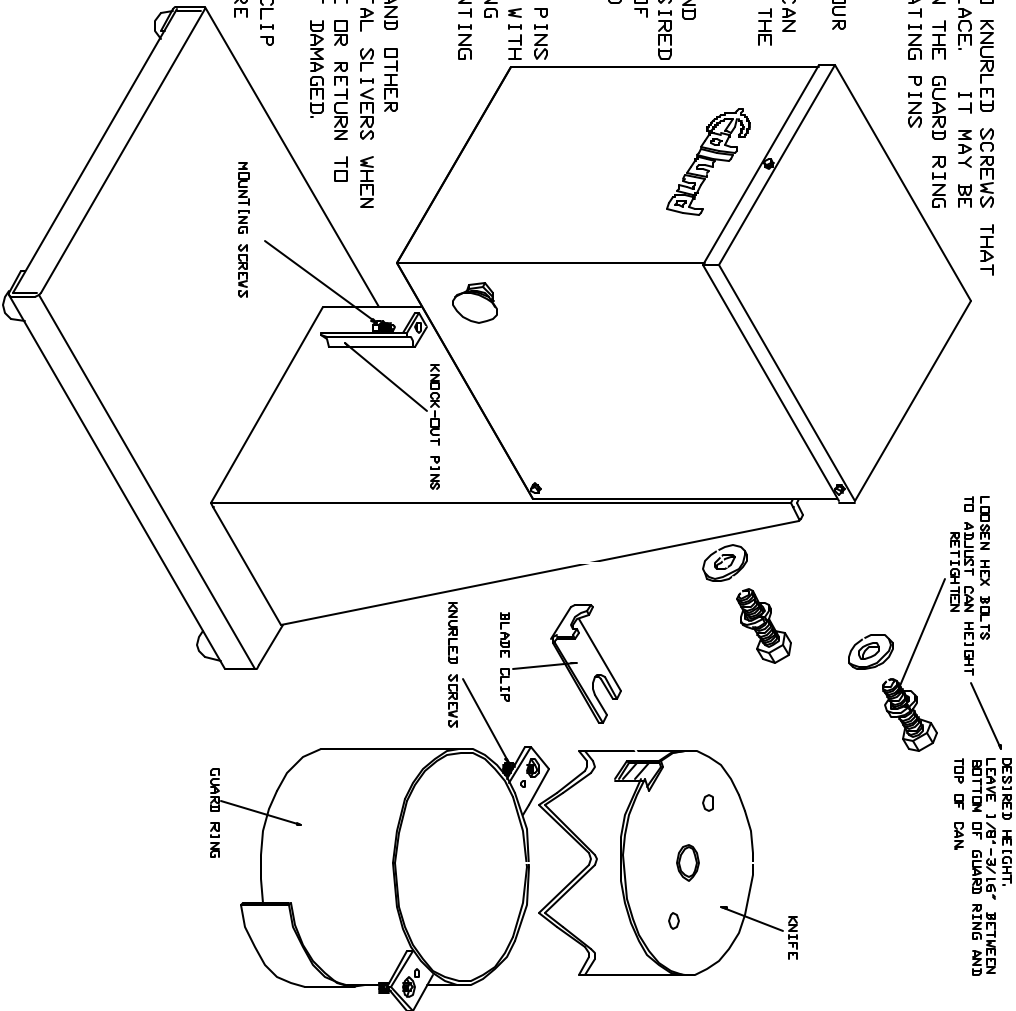
Edlund Company, Inc., 159 Industrial Parkway, Burlington, VT 05401 802-862-9661

PART	DESCRIPTION
A720	ASSY, #10 GUARD RING (SPECIFY CAN SIZE)
A748S	ASSY, S/S GEAR & SHAFT (G029, K003, R031, S115)
A750	WELDMENT, FRAME (INCLUDES F052(4), R046 (4))
A751	WELDMENT, 700T BASE (INCLUDES F052 (4) R046 (4))
A752	WELDMENT, 700T VERTICAL
A753	ASSEMBLY, RAM PLATE & WELD PIN
A754	WELDMENT, COVER
A756	ASSY, #10 KNIFE
A757	ASSY, RAM PLATE & WELD PIN
A761	ASSY, S/S HEAD
A7611	PLATE, S/S LEFT GEAR
A7612	PLATE, S/S RIGHT GEAR
A046	ADAPTER, BLADE CLIP (OLD STYLE CONVERSION)
B035	BEARING, FLANGE
B136R	BUSHING, 700 RAM PLATE SHEILD
B141	BLOCK S/S SPACING & ADJUSTING
B142	BRACKET, S/S HANDLE
C084	CLIP #10 BLADE
F003	FASTENER
F052	FEET
G029	GEAR, S/S
H006	HANDLE, S/S
K003	KEY, #9
L027	LEVER S/S ARM
N020	NUT, S/S 10-32 HEX
N032	NUT, S/S 1/4-20 NYLCOK
P016	PIN, KNOCKOUT
P042	PIN, WELD
P146	PLATE, BRASS SPACER
R031	RING #700 RETAINING S/S
R046	RIVET
R061C	RAM, S/S W/CLIP SLOT
R062	RETAINER, S/S W/CLIP SLOT
S026	SCREW, S/S 1/2-13 X 1 HEX
S033	SCREW, S/S 1/2-13 X 3/4 HEX
S034	SCREW, S/S 1/2-20 X 1 HEX
S036	SCREW, S/S 4/4-20 X 1/2 HEX
S040	SCREW, S/S 10-32 X 1-1/4 HEX
S044	SCREW, S/S 10-32 X 1/2 HEX
S045	SCREW, 10-32 X 1/2 HEX
S049-12	SCREWS, 12 PACK 10-32 X 3/8 S/S HEX HEAD




BLADE CLEANING AND INSPECTION

- 1) DISCONNECT AIR REMOVE TWO KNURLED SCREWS THAT HOLD THE GUARD RING IN PLACE. IT MAY BE NECESSARY TO PULL DOWN ON THE GUARD RING TO REMOVE IT, IF THE LOCATING PINS ARE TIGHT.
- 2) SUPPORT THE BLADE WITH YOUR HAND, LIFTING SLIGHTLY TO LOOSEN BLADE CLIP SO IT CAN BE PULLED OUT, RELEASING THE BLADE TO DROP OFF.
- 3) WASH BLADE, GUARD RING AND CLIP IN DISHWASHER IF DESIRED TO STERILIZE. THE REST OF THE MACHINE CAN BE WASHED WITH SOAP AND WATER.
- 4) CHECK THAT THE KNOCK-OUT PINS ARE STRAIGHT AND LINE UP WITH HOLES IN THE BLADE BACKING PLATE AND THAT THEIR MOUNTING SCREWS ARE TIGHT.
- 5) INSPECT BLADE FOR NICKS AND OTHER DAMAGE THAT MAY CAUSE METAL SLIVERS WHEN OPENING THE CAN. REPLACE OR RETURN TO THE FACTORY FOR REPAIR IF DAMAGED.
- 6) REASSEMBLE BLADE, BLADE CLIP AND ALL GAUDDING. BE SURE ALL SCREWS ARE TIGHT. RECONNECT AIR SUPPLY.



REVISIONS			DATE	APPROVED
EDN	DESCRIPTION			

UNLESS OTHERWISE SPECIFIED			DWG NAME		BLADE CLEANING INSTRUCTIONS		
Tolerances On:			DRAWN BY: MJA		MODEL: 610, 625, 700		
Fractional Dimensions +/- 1/64			APPROVED BY: JSC		REF: NONE		
Decimal Dimensions +/- .005			DATE: 12/29/92		SCALE 1:1		
Angular Dimensions +/- 1°			1 of 1		REV		
 <div> Edlund Company Inc. </div>			Burlington, Vermont				