

---

# HIGH VOLUME CAN OPENING SOLUTIONS



625A MOBILE CROWN PUNCH  
CAN OPENING SYSTEMS

All Products Feature:

- Wash-down to IP-65 standard.
- Constructed of heavy duty stainless steel.
- Height-adjustable casters.
- Made in U.S.A.
- Quick-change tooling for different can sizes.
- Reliable P.L.C. Control.
- Air Consumption: 2 CFM (56.6 Liter/m)  
@ 85 PSI (6 BAR).



625A-PP  
59" x 29" x 43"  
(150 cm x 74 cm x 109 cm)



625A-CT  
50" x 24" x 24"  
(127 cm x 61 cm x 61 cm)



625A-NC

625A-PP/625A-NC Exclusive Features:

- 625A-PP comes fully enclosed with built-in compressor.
- 625A-NC has open shelf design for facilities with existing air supply.
- Tamperproof hardware utilized throughout.
- Two lockable programmable counters and reliable sensors provide accurate lid-to-can verification.
- Reinforced welded and perforated walls and door with integral padlock latch securely enclose and protect compressor and 32-gallon lid container.
- Power lock-out key limits access to lid and can counters.

625A-CT Exclusive Features:

- Fully enclosed compartment with built-in compressor.
- Automatic lid removal ejects lids into receptacle.
- Reinforced welded and perforated walls and door protect compressor from excess moisture.
- Air powered, two-handed operation for safety and security.
- Opens up to 10 cans per minute with one operator.
- Ideal for applications where compressed air is unavailable or space is limited.
- Unit is self-contained and intended to be a mobile turn-key product.

STANDARD TOOLING

For Crown Punch Openers and Systems

Can Size	Diameter (inches)	Diameter (millimeters)
603 (#10)	6 3/16"	157 mm
600	6"	152.4 mm
502	5 1/8"	130 mm
404	4 1/4"	108 mm
401	4 1/16"	103.2 mm
400	4"	101.6 mm
307 (SOUP)	3 7/16"	87.3 mm
303	3 3/16"	81 mm
300	3"	76.2 mm
214	2 7/8"	73 mm
211	2 1/16"	68.3 mm
202	2 1/8"	54 mm

**Note:** Custom tooling available. Please call factory for details.



# WASHES, OPENS, DUMPS, RINSES AND



Programmable color touch panel with on-screen diagnostics

B. Model 895A Opener

A. Infeed Conveyor



## 895A CROWN PUNCH CAN OPENING SYSTEM

### 895A Features:

- Return on investment is achieved through a reduction in labor for the same operation.
- Can opening operation is accomplished more quickly, meaning that employees can go on to other jobs sooner.
- Additional R.O.I. on system is recovered from recycling of the crushed cans. Haulers will usually not charge for the removal of a load of crushed cans, because the cans now have a value for their weight.
- NEW P.L.C. operating system has on-screen diagnostics to handle any necessary troubleshooting.
- More than 750 systems are in use around the world by both large and small processors, some with fewer than 50 employees.
- Designed to meet NFPA79 electrical standards.
- Final set-up and training at the customer's location is included in the cost of the system.\*
- Technical advice and application support is always available from Edlund.
- The 895A opens up to 25 cans per minute or 1500 cans per hour. Some processors will start using the system at a lower volume to facilitate integration into a growing operation.
- The model 895A Can Opening System is backed by Edlund's 80 years of service.

\*Continental USA and Canada only. Call for costs at other locations.



# CRUSHES WITH JUST ONE OPERATOR.

The Model 895A Can Opening System washes, opens, dumps, rinses and crushes, and requires just one operator. Its programmable logic controller ensures trouble-free service and performance.

Designed for food processors, commissaries, caterers and central school kitchens, the system is available with adjustable rails and conversion kit for quick change from one size can to another.

Constructed of stainless steel and designed for IP65 wash-down. System includes automatic drainage filter with regulator and coalescing filter and safety circuits with quick dump air valve.

**See [edlundco.com](http://edlundco.com) for video.**

## 895A CROWN PUNCH CAN OPENING SYSTEM SPECS

**UTILITIES:** Compressed Air: Minimum 85 psi; volume 15 CFM (6 BAR at 424 l/m), ½" airline connection to system at one location.

**WATER:** House pressure, standard hose line connection to can washing components. One hook-up location on system.

**DRAIN:** 1½" drain connection to can washing rinse catch pans.

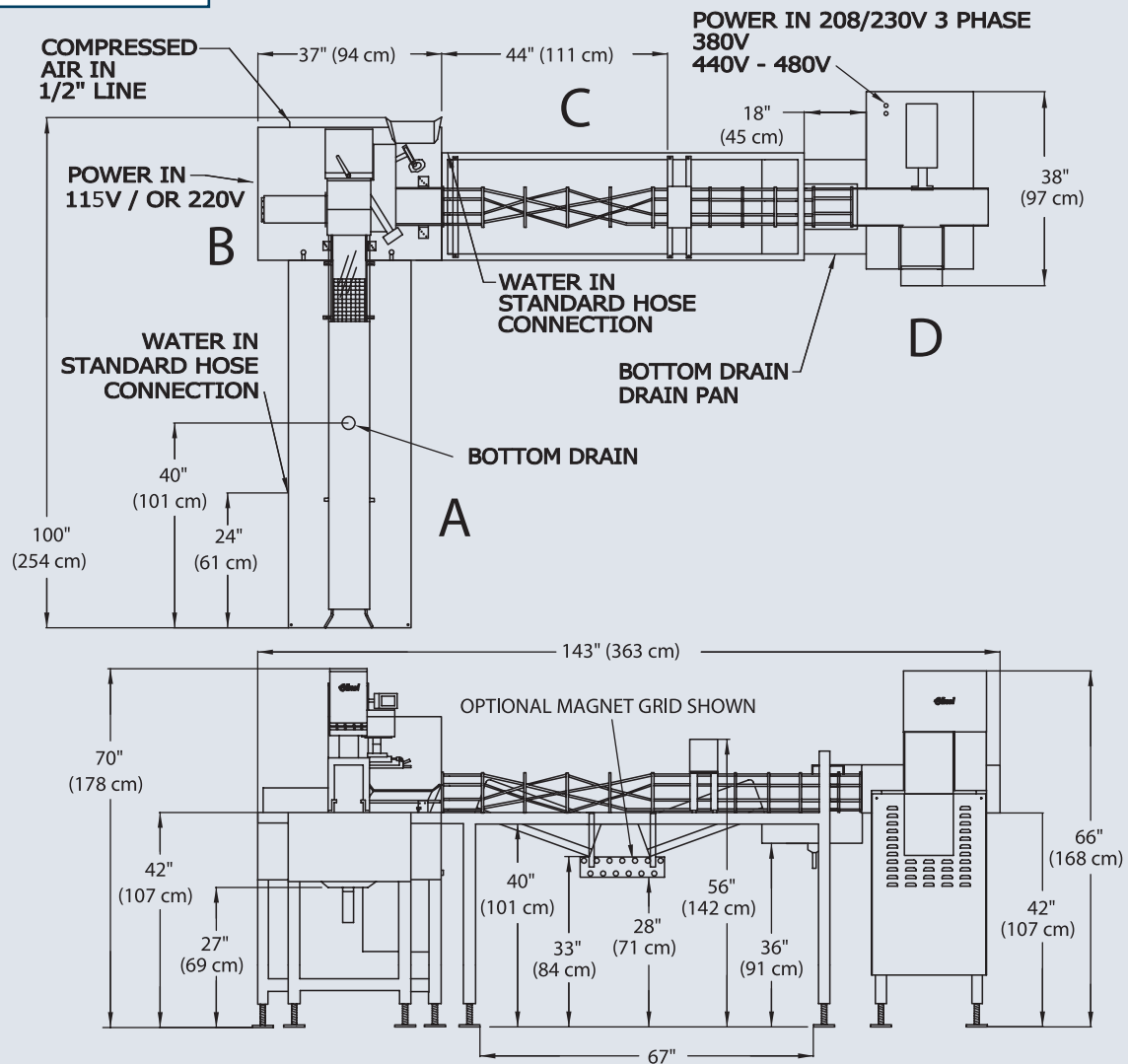
**ELECTRICAL:** 115V or 220V for infeed motor and P.L.C.  
Can Crusher 208V or 460-480V three phase power.



### 895A Options:

- Right, left or in-line machine layouts available.
- Magnetic grid for dump frame.
- Custom tooling and cage changeover kit for most can sizes.
- Additional bottom punches, cage vibrator and air blow options for thick products.

## MODEL 895A SYSTEM LAYOUT



Note: Other layout options also available

### A. INFEED CONVEYOR SPECIFICATIONS

Electric	4.2 Amp at 115V or 2.1 Amp at 230V 60Hz.
Water	From 0 to 6 GPM at 20 to 60 psi (0 – 23 l/m at 1.4 – 4.13 BAR) (optional chemical recirculative pump)
Compressed Air	From 0 to 6 CFM at 85 psi (0 – 170 l/m at 6 BAR)
Length	72" 183 cm
Width	24" 61 cm
Height Overall	56" 142 cm
Working Height	41" 104 cm
Approx. Shipping Weight	400 lbs. 182 kg

### B. MODEL 895A SPECIFICATIONS

Electrical	115V or 220V for P.L.C. (please specify)
Compressed Air to Opener	6 CFM at 85 psi min. airline size 1/2" (13 mm) (169 l/m at 6 BAR)
Length	37" 94 cm
Depth	31" 79 cm
Height Overall	60" 152 cm
Working Height	36" 91 cm
Approx. Shipping Weight	550 lbs. 250 kg

### C. DUMPING FRAME SPECIFICATIONS

Compressed Air to Vibrator	2 CFM up to 11 CFM at 85 psi (56.6 l/m up to 311 l/m at 6 BAR) (depending on options)
Water	1 to 10 GPM at 20-60 psi (3.84 – 30 l/m at 1.4 – 4.15 BAR)
Length	87" (including cage) 221 cm
Width	21" 53 cm
Height	65" 165 cm
Working Height	41" 104 cm
Approx. Shipping Weight	250 lbs. 114 kg

### D. CAN CRUSHER SPECIFICATIONS

Electric	14-13.2 Amp at 208-230V or 6.6 Amp at 460V 3 phase 60 Hz.
Compressed Air	1 CFM at 85 psi (28.31 l/m at 6 BAR)
Length	32" – 38" with output guard 81 – 97 cm
Width	22" 58 cm
Height	66" 168 cm
Working Height	37.5" to 42.5" 95 – 108 cm
Approx. Shipping Weight	700 lbs. 318 kg

## CROWN PUNCH CAN OPENERS

Open cans with a single stroke! All models are tooled, complete with knife and guard ring locator for one standard size #10 round can. Please provide us with specific can size information when ordering. Crown punches feature a "quick change" option for other size cans. All Crown Punch Models are USDA accepted.



**AIR POWERED CROWN PUNCH Standard model** for cans up to 11" high. Recommended for up to 400 cans per day. Requires 85 P.S.I. at 1½–2 C.F.M. (6 BAR at 56.6 l/m).

**610**  
22" x 11" x 14"  
(56 cm x 28 cm x 36 cm)



**AIR POWERED CROWN PUNCH** with magnetic lid remover for up to 400 cans per day.

**610M**  
22" x 26" x 14"  
(56 cm x 66 cm x 36 cm)

## EXTREME DUTY CROWN PUNCH CAN OPENERS

The model 625A Air Powered Crown Punch is our heaviest duty stand-alone industrial opener. Featuring an automatic lid-removal system, the 625A will open and de-lid up to 3,000 cans per day safely and with just one operator. The exclusive alligator claw automatically grabs the lid and drops it into a receptacle for greater efficiency.



**625A**  
27" x 26" x 20"  
(69 cm x 66 cm x 51 cm)



**625M**  
27" x 12" x 18"  
(69 cm x 31 cm x 45 cm)



**625T**  
37" x 12" x 20"  
(95 cm x 31 cm x 51 cm)



**625**  
27" x 12" x 20"  
(69 cm x 31 cm x 51 cm)

### 625 Features:

- All heavy duty stainless steel construction.
- Entire unit can be washed down for thorough cleaning.
- Adjustable height feature allows opening of almost any size can.
- Dual safety controls for two-handed operation.
- Micro switch activated protective cover prevents operation when door is open.
- Completely air operated. Requires 85 P.S.I. at 1½ – 2 C.F.M. (6 BAR at 56.6 l/m).
- Quick change tooling option for multiple can sizes.
- Custom tooling available.
- Opens up to 3,000 cans per day.
- Made in U.S.A.

## HYDRAULIC AND AIR POWERED CAN CRUSHERS

Now, you can save on your growing trash collection charges with Edlund can crushers. These can crushers reduce the size of all your cans up to 85%. So you can fit six times more cans in your dumpsters and recycling bins. Whether you choose the hydraulic, air-powered, or manual models, you won't find an easier way to crush your cans.



**Hydraulic CH-5000**  
15" x 12" x 30"  
(38 cm x 30 cm x 76 cm)



**Air-Powered CA-3000/CA-3000T**  
8" x 8" x 26" (20 cm x 20 cm x 66 cm)  
85 P.S.I. at 10 C.F.M. (6 BAR at 283 l/m)

### Hydraulic and Air Powered Crusher Features:

- Crushes up to ten #10 cans per minute.
- Reduces volume by 85% (6:1).
- Easy to operate.
- Labor-saving design eliminates need to open can bottom before crushing.
- For added safety, chamber covers must be closed to activate.
- Can be used for #10 cans and other smaller sizes.
- Stainless steel cabinet and crusher box can be wiped down for easy cleaning.
- Sits on tabletop or counter.
- Maximum usage recommended: 1000 cans per day.
- Model CA-3000 for #10 cans or smaller.
- Model CA-3000T for oversized cans.
- Made in the U.S.A.

