

**To select dispense method:**

**Add -S after model number for SensorSAFE™ dispensing or -L for lever dispensing.**

**Models with removable (A) air- or (W) water-cooled icemaker**

- 110FB400A/W – 115 V, 60 Hz
- C110FB400A/W – 220 V, 60 Hz
- E110FB400A/W – 230 V, 50 Hz



110FB400A-S (freestanding with SensorSAFE™-S™ dispensing)

*Symphony™*

Freestanding ice and water dispensers with removable air- or water-cooled icemaker located in the base of the unit. Stainless steel exterior with plastic trim. Stainless steel frame. Water station standard. Up to 90 lbs (41 kg) storage. Produces approximately 400 lbs (181 kg) of Chewblet compressed nugget ice in a 24-hour period.

**Add -S after model number for SensorSAFE dispensing or -L for lever dispensing.**

**Convenient, sanitary, user-friendly dispensing**

- Labor-saving, sanitary automatic load
- Available with lever or infrared SensorSAFE dispensing
- Quick shut-off reduces the amount of wasted ice
- High-quality Chewblet compressed nugget ice is slow melting, easy to chew
- Clear chute focuses ice into cups, pitchers, carafes, ice bags

**SensorSAFE dispensing option offers even more sanitation and convenience**

- Infrared sensing eliminates container to dispenser contact, reduces chance of cross-contamination
- Easy, one-hand filling of containers
- SensorSAFE not recommended for use with clear containers or for applications in direct sunlight

**Space-saving, attractive design**

- 24.5" (623 mm) width requires less space than competitive models of similar capacity
- Zero side clearance required for ventilation
- Softly-rounded European styling
- High-quality stainless steel exterior with plastic trim
- Attractive, user-friendly graphics

**Environmentally friendly, high performance Maestro icemakers**

- State-of-the-art R404A icemaker automatically loads dispenser with 400 lbs (181 kg) of ice each day
- Stainless steel evaporator and auger
- Energy and water efficient
- Quiet production; no noisy harvest cycles

**Warranty**

- 2 years parts and labor
- 5 years compressor parts

**Accessories**

- Chilled water option (item# AFH20CHIL110)
- Water filter kit (item# 00130229)
- SafeCLEAN™ environmentally friendly icemaker cleaner (item# 00132001)
- Casters (item# AFCASTERKIT)

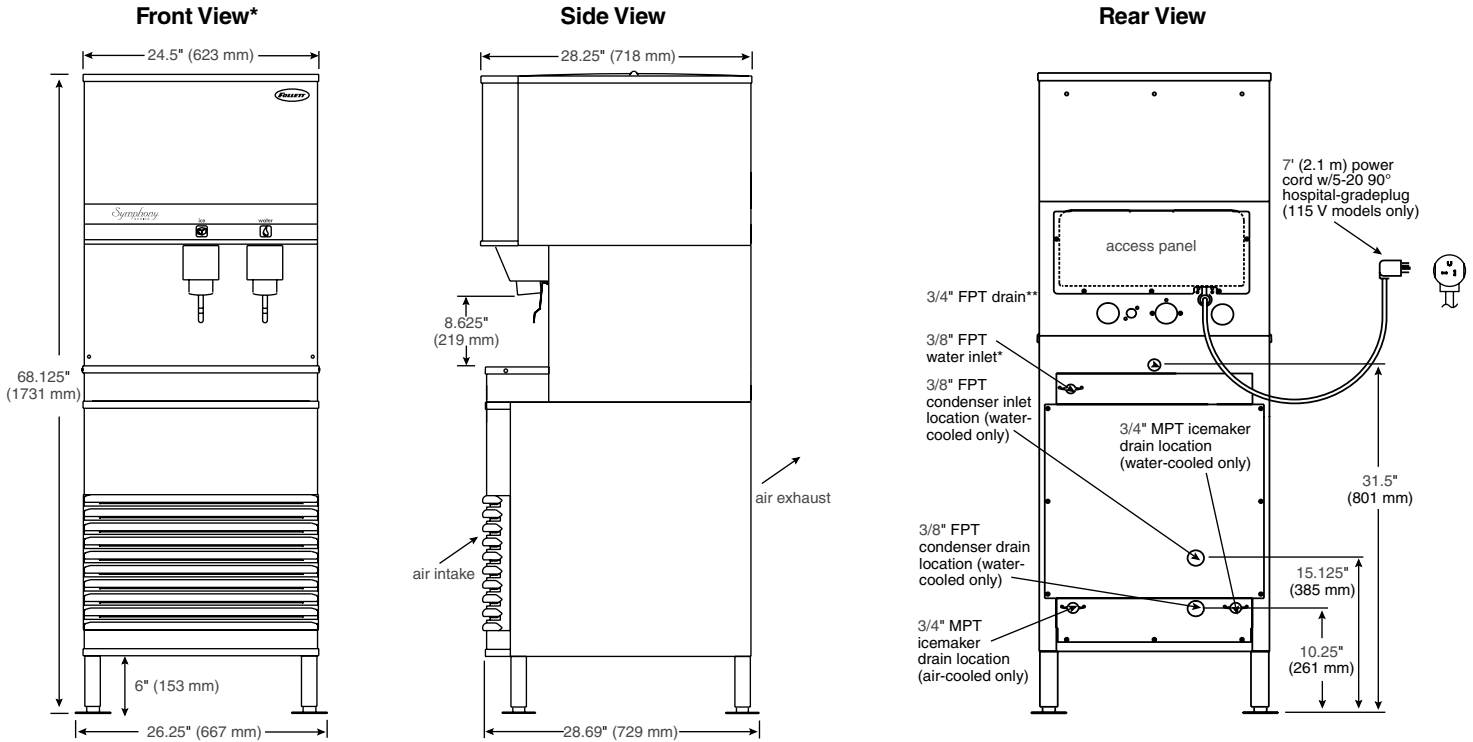


Ice maker in base slides out easily for service

JOB: \_\_\_\_\_  
ITEM: \_\_\_\_\_

# 110 Series

# Symphony™ freestanding ice and water dispensers with Maestro™ Chewblet® ice icemaker



\* Shown with lever dispensing (-L); infrared SensorSAFE dispensing (-S) available.  
 \*\* Kit provided with all 230 V, 50 Hz and 220 V, 60 Hz models to connect to BSP water fittings.

## Clearances

	Air-cooled	Water-cooled
<b>Required for ventilation</b>	4" (102 mm) rear	N/A
<b>Recommended for service</b>	12" (305 mm) top	12" (305 mm) top

See Dispenser Detail Sheet, form# 2075, for important installation information.

## Electrical

Model number	Electrical connection	Dispenser amperage	Circuit required
110FB400A/W	115 V, 60 Hz, 1 phase	14 amps	20 amps
C110FB400A/W*	220 V, 60 Hz, 1 phase	6.5 amps	15 amps
E110FB400A/W*	230 V, 50 Hz, 1 phase	6.5 amps	15 amps

It is preferred that circuit be protected by a GFCI breaker.

7 ft (2.1 m) cord and NEMA 5-20 hospital-grade plug provided with each dispenser. If local code requires hard-wiring, separate disconnects also required.

\* Cord only. Ensure wiring is in accordance with all local codes.

## Approximate shipping weight 290 lbs (132 kg)

**Specifications** Ice and water dispenser to be Follett® freestanding, automatic load, with \_\_\_ 90 lbs (41 kg) of storage, water station and (choose one) \_\_\_ air- or \_\_\_ water-cooled icemaker in base. Dispenser frame and cabinet to be stainless steel with plastic trim. Environmentally friendly R404A icemaker to be mounted in base and to be removable as one unit for cleaning and maintenance. Icemaker to produce approximately 400 lbs (181 kg) per day of Chewblet compressed nugget ice at air temp. of 70 F (21 C), water temp. of 50 F (10 C) and to be equipped with printed circuit board with diagnostics for servicing. Dispenser to have automatic bin level control to start and stop icemaker and separate circuitry to allow dispensing to continue with icemaker removed. Dispenser to be equipped with 6" (153 mm) adjustable legs, flanged feet and lightweight plastic top that allows full access to the ice storage area for manual loading of back-up ice. Storage area to be insulated with non-CFC, high density, foamed-in-place polyurethane. 7 ft (2.1 m) cord and NEMA 5-20 hospital-grade plug provided (220 V/230 V models, cord only). Dispenser to be NSF, UL and cUL listed. 230 V models also CE compliant.

Maestro, SafeCLEAN, SensorSAFE and Symphony are trademarks of Follett Corporation. Chewblet and Follett are registered trademarks of Follett Corporation, registered in the US. Follett reserves the right to change specifications at any time without obligation. Certifications may vary depending on country of origin.

## Ice Production

Air-cooled icemaker capacity/24 hrs.

Inlet Water Temperature °F/C	Ambient Air Temperature °F/C						lbs.
	F	60	70	80	90	100	
	C	16	21	27	32	38	
50	510	454	397	335	273	273	lbs.
10	232	206	180	152	124	124	kg.
60	482	435	389	329	270	270	lbs.
16	219	198	177	150	123	123	kg.
70	454	417	380	323	266	266	lbs.
21	206	190	173	147	121	121	kg.
80	424	385	347	297	247	247	lbs.
27	193	175	158	135	112	112	kg.
90	394	354	313	270	227	227	lbs.
32	179	161	142	123	103	103	kg.

Water-cooled icemaker capacity/24 hrs.

Inlet Water Temperature °F/C	Condenser Water Inlet Temperature °F/C						lbs.
	F	60	70	80	90	100	
	C	16	21	27	32	38	
50	451	447	442	437	428	428	lbs.
10	204	202	200	199	194	194	kg.
60	423	413	409	399	394	394	lbs.
16	192	187	185	181	179	179	kg.
70	394	390	380	371	361	361	lbs.
21	179	177	172	168	163	163	kg.
80	371	361	352	342	333	333	lbs.
27	168	163	160	155	151	151	kg.
90	352	342	333	323	309	309	lbs.
32	160	155	151	146	140	140	kg.

## Energy consumption

KWH per 100 lbs (46 kg) ice†	
Air-cooled	5.7
Water-cooled	5.5

† Air temp. 90 F (32 C); water temp. 70 F (21 C)

## Heat rejection data

Model	Heat rejected in BTU/hr	
	to air	to water
Air-cooled	5000	N/A
Water-cooled	1400	3600

## Water consumption

12.6 gal (48 L) of potable water usage per 100 lbs (46 kg) of ice.