

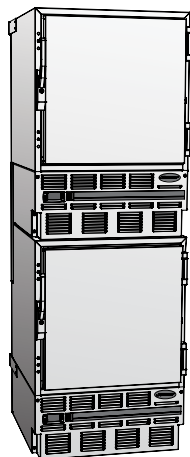
Undercounter refrigerators

REF5 – Freestanding or below standard 36" (915 mm) counters, 4.8 cu ft (136 L) capacity

REF4-ADA – Freestanding or below 34" (864 mm) ADA-compatible counters, 4.0 cu ft (113 L) capacity



*Displays
temperature
in °F or °C!*



(2) units shown with
stacking kit accessory
(item# 00926618)

Medical-grade undercounter refrigerator with external digital temperature display in °F or °C. Provides secure, stable temperature storage required for patient floor, lab and pharmacy applications. Stainless steel interior/exterior.

Consistent temperature performance, security

- Heavy-duty 1/4 hp compressor, forced air cooling and digital microprocessor controller maintain uniform cabinet temperatures with quick pull-down and rapid recovery following door openings
- Adjustable set point meets temperature needs for different applications
- Locking door handle provides medication security
- Supports Joint Commission standards for medication storage
- NSF-listed; ensures temperature stability in adverse ambients

More features designed specifically for healthcare

- Easy-to-read external temperature display in °F or °C allows easy logging without opening door
- Positive locking door latch and magnetic gasket provide secure closure
- Two, easy-to-clean, epoxy-coated shelves
- Two models – for standard 36" (915 mm) high counter and 34" (864 mm) ADA-compatible counters
- Rear port for easy alarm probe (accessory) entry

Easy installation, cleaning and care

- Front-breathing design requires no side, top or back clearance
- 23.75" (603 mm) width allows easy installation in standard 24" (610 mm) casework openings
- Field-reversible door provides left or right opening flexibility
- Automatic, off-cycle defrost eliminates manual defrosting
- Condensation evaporates automatically
- Durable stainless steel interior and exterior for easy cleaning
- Rear slide-out condensing unit provides complete access

Industry's best warranty

- 2-yr parts and labor on entire refrigerator
- 5-yr parts on compressor

Options/accessories

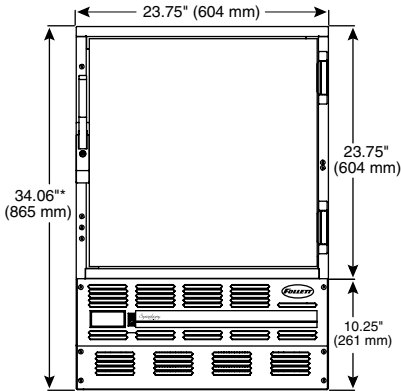
- Keypad, code-based entry
- Additional shelf (item# 00131748)
- Temperature alarm module with °F/°C display (item# 00112185)
- Temperature surveillance module (includes alarm, digital display and chart recorder) (item# 00168674)
- Omnicell®-compatible door bracket (item# 00158014)
- Pyxis®-compatible door bracket (item# 00114702)
- Stacking kit (item# 00926618)
- 17" (432 mm) stainless pedestal stand (item# 00931154)

*Pyxis® is a registered trademark of Cardinal Health in the United States and other countries.
*Omnicell® is a registered trademark of Omnicell, Inc. in the United States.

JOB: _____

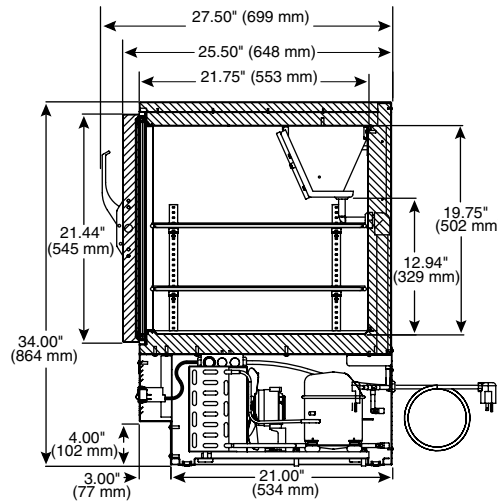
ITEM: _____

Front View
REF5

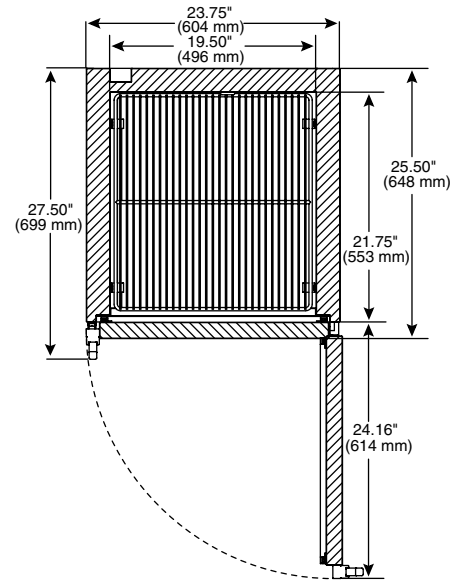


* Height includes leveling legs

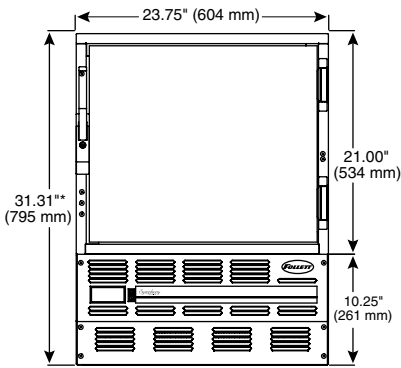
Side View
REF5



Top View
all models

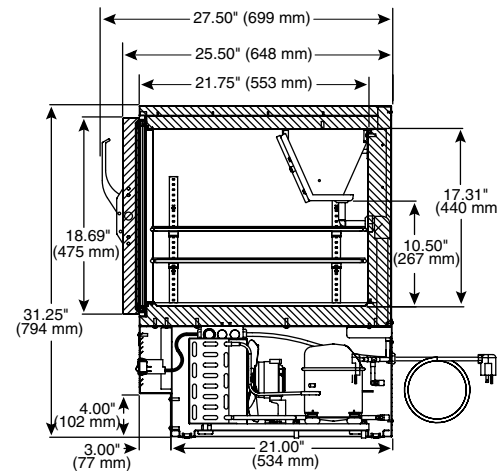


Front View
REF4-ADA

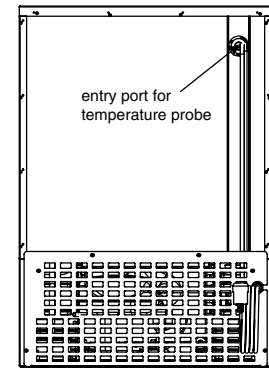


* Height includes leveling legs

Side View
REF4-ADA



Back View
all models



Refrigerant R404A, 7.9 oz

Max. heat rejection 717 BTU/hr

Electrical

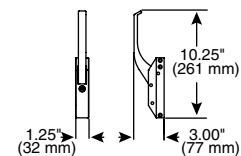
115 V, 60 Hz, 1 ph, 8.0 amps, max. fuse 15 amps. Hospital-grade cord and plug provided.

Approximate shipping weight 175 lbs (79 kg)

Specifications Undercounter refrigerator to be Follett® model (choose one) _____ REF5, 34.06" (865 mm) high with 4.8 cu ft (136 L) capacity or _____ REF4-ADA, 31.31" (795 mm) high with 4.0 cu ft (113 L) capacity. Environmentally friendly R404A refrigeration system to include heavy-duty 1/4 HP compressor, blower, blower coil and automatic evaporative forced air cooling with off-cycle defrost. Refrigerator to be equipped with external temperature display (displays in °F or °C) and solid-state controller to maintain uniform cabinet temperatures. Controller to have adjustable set point to meet varied temperature needs for different applications. Refrigerator door to be field-reversible and equipped with replaceable dart-style gasket and chrome-plated handle with cylinder lock. Refrigerator interior and exterior to be stainless steel. Two epoxy-coated wire shelves adjust in 1/2" (13 mm) increments. Storage area to be insulated with high-density, non-CFC foam polyurethane. Hospital-grade cord and plug provided. Refrigerator to be NSF, UL and cUL listed.

Follett is a registered trademark of Follett Corporation, registered in the US.
Follett reserves the right to change specifications at any time without obligation. Certifications may vary depending on country of origin.

Handle Detail
all models



Plug Detail
all models
NEMA 5-15

