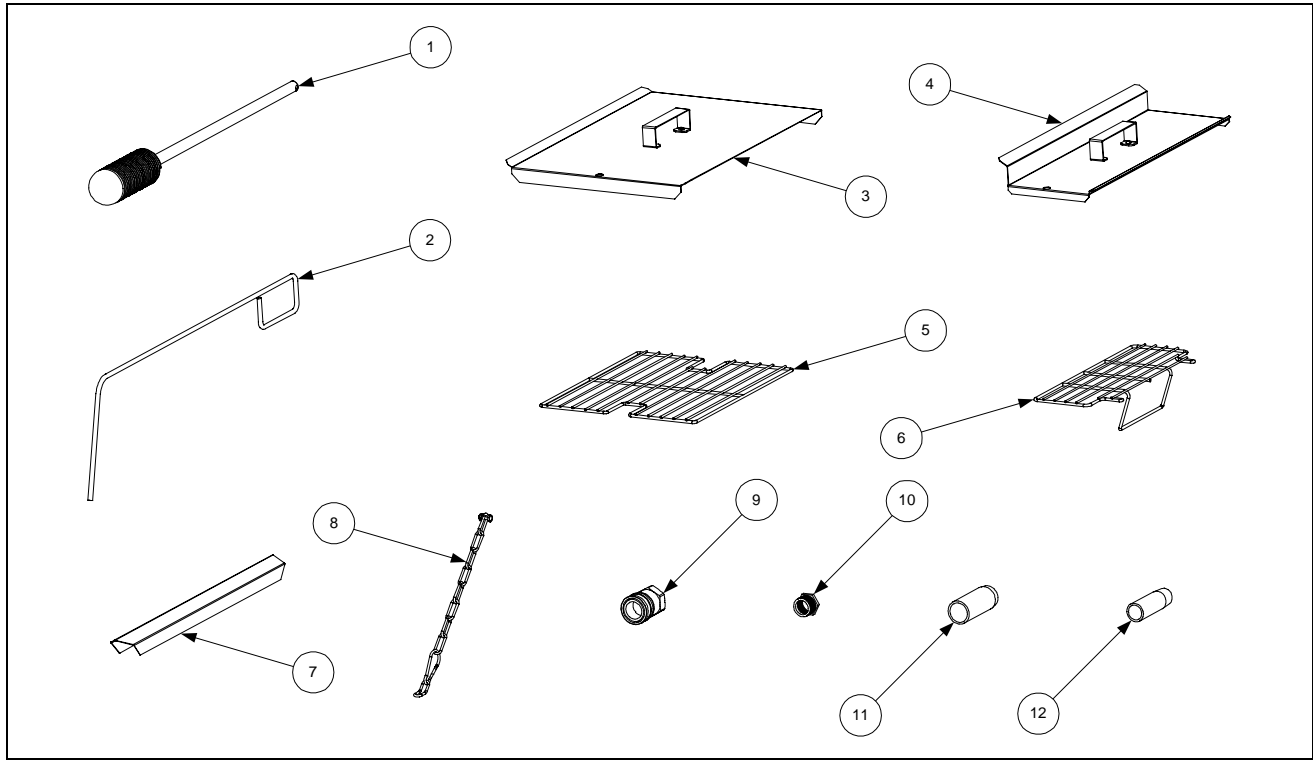


CHAPTER 4: PARTS LIST

4.1 Accessories

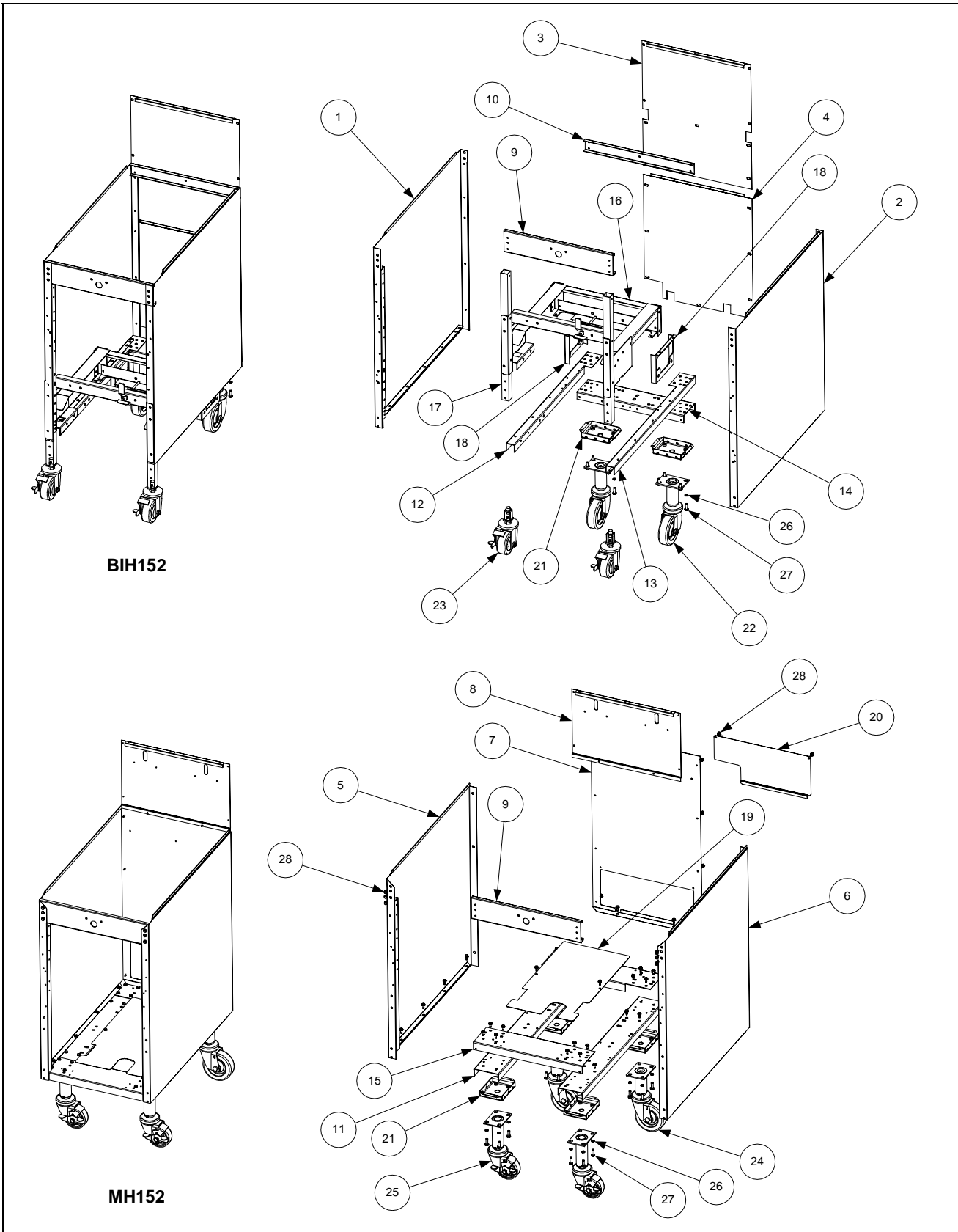


ITEM	PART #	COMPONENT
1	803-0209	Brush, Frypot Cleaning
2	803-0197	Fryer's Friend 27" (Clean-out Rod)
3	806-3068	Cover, Full-Vat Frypot
4	806-3407	Cover, Dual-Vat Frypot
*	826-0993SP	Kit, Replacement Cover Handle
5	803-0132	Rack, Full-Vat Basket Support
6	803-0133	Rack, Dual-Vat Basket Support
8	826-0900	Kit, Chain Restraint
7	910-7443	Top Connecting Strip
9		Coupling, Gas Line Female Quick-Disconnect
	810-0070	¾-inch
	810-0073	1-inch
*	810-0478	Gas Line, Flexible, with Cut-Off Valve
10	813-0032	Bushing, Flexible Gas Line
11	812-1378	Drain Extension, Non-Filter Full Vat Fryer
12	812-1374	Drain Extension, Non-Filter Dual Vat Fryer
*	803-0271	Basket, Twin
*	826-1157	Kit, Fuse and Fuse Puller
*	803-0002	Powder, Filter – Approximately 100 Cups
*	803-0046	Cup, Plastic Filter Powder Measuring
*	803-0170	Filter Pack – 100 Sheets

* Not illustrated.

4.2 Cabinetry Components

4.2.1 BIH152 and MH152 Cabinet Components

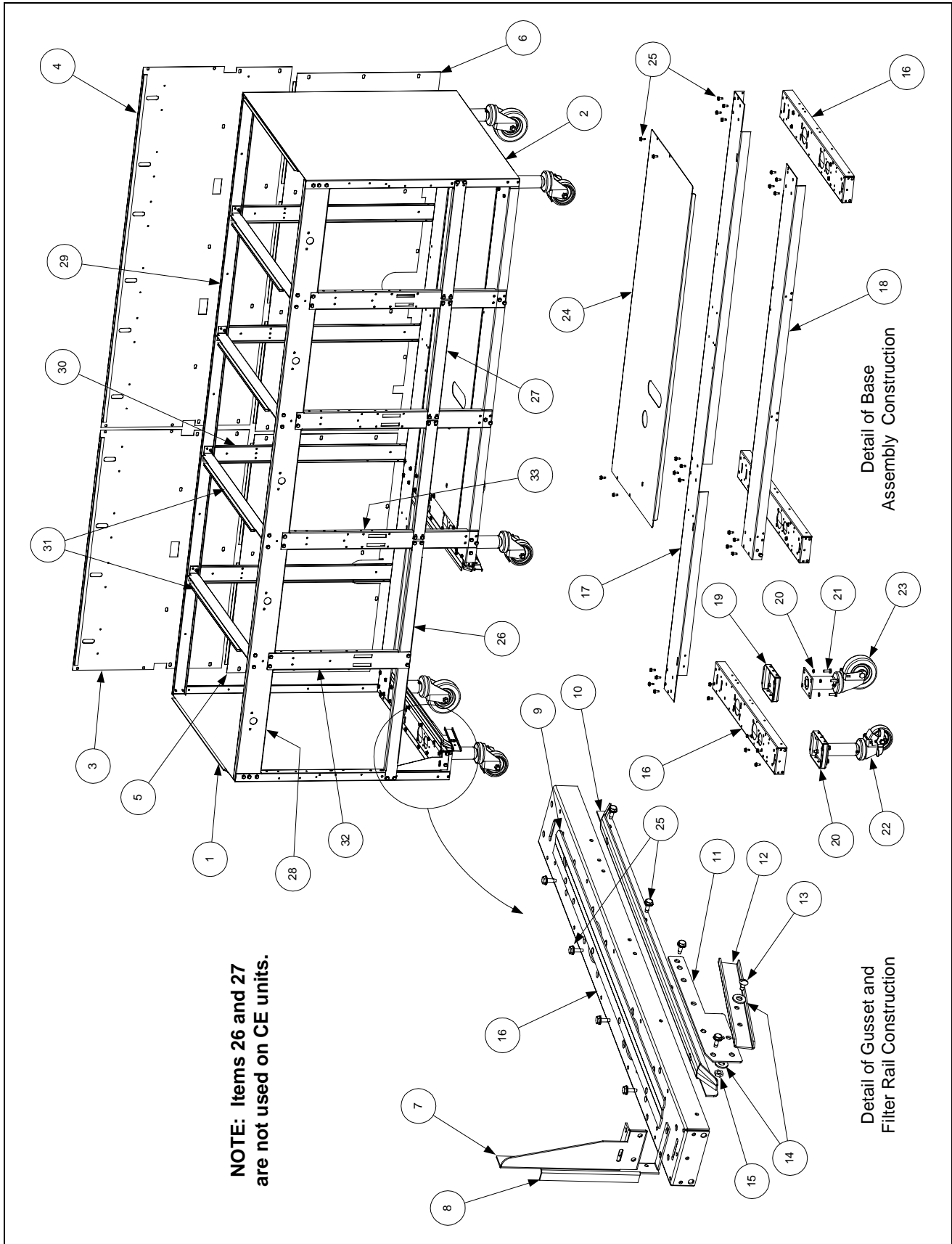


4.2.1 BIH152 and MH152 Cabinet Components cont.

ITEM	PART #	COMPONENT
1	911-7688SP	Side, BIH52 Left
2	912-7688SP	Side, BIH52 Right
3	900-5521	Back, BIH152 Upper
4	900-5670	Back, BIH152 Lower
5		Side, MH52 Left
	911-7036SP	Before 6 Nov 2000
	911-7688SP	After 5 Nov 2000
6		Side, MH52 Right
	912-7036SP	Before 6 Nov 2000
	912-7688SP	After 5 Nov 2000
7		Back, MH152 Lower
	900-2654	Before 6 Nov 2000
	900-5670	After 5 Nov 2000
8		Back, MH152 Upper
	900-2410	Before 6 Nov 2000
	900-5521	After 5 Nov 2000
9	900-4180	Brace, BIH152/MH152 Top
10	900-5519	Brace, BIH152 Rear (and MH152 after 5 Nov 2000)
11		Channel, MH52 Cabinet Base Left and Right Side
	900-7035	Before 6 Nov 2000
	900-7687	After 5 Nov 2000
12	901-5526	Channel, BIH152 Base Left Side
13	902-5526	Channel, BIH152 Base Right Side
14	900-4389	Channel, BIH152 Base Rear
15	900-4179	Channel, MH152 Cabinet Base Front and Rear
16	806-8421	Rail Assembly, BIH152
17	910-5656	Leg, BIH152 Front
18	823-2579	Bracket, BIH152 Filter Motor Mount
19		Shield, MH152 Base
	900-2541	Before 6 Nov 2000
	200-0075	After 5 Nov 2000
20	900-2649	Cover, MH52 Rear Access (notch on right)
21	806-5209	Leg Pad Assembly
22	812-1326	Caster, BIH152 Rear
23	823-2844	Caster, BIH152 Front (on units built prior to Nov 2000, use 823-2582)
*	810-1414	Insert, BIH152 Square Leg (component of Item 23, adapts caster to leg)
24	810-0327	Caster, Rear (without brake)
25		Caster, Adjustable Front (with brake)
	810-0326	Before 6 Nov 2000
	810-0944	After 5 Nov 2000
26	809-0191	Washer, 1/4-inch Lock
27	826-1389	Screw, 1/4-20 x 3/4-inch Hex Head (Pkg. of 10)
28	826-1374	Screw, #10 x 3/4-inch Washer Hex Head (cabinet screw) (Pkg. of 25)

* Not illustrated.

4.2.2 BIH52 Cabinet Components (Batteries)



4.2.2 BIH152 Cabinet Components (Batteries) cont.

ITEM	PART #	COMPONENT
1	911-7688SP	Side, Left Cabinet (all models)
2	912-7688SP	Side, Right Cabinet (all models)
3	900-7714	Back, Upper Cabinet (BIH252, BIH452 & BIH552)(900-2881 BIMH452)
4	900-9424	Back, Upper Cabinet (BIH352 and BIH552)
5	900-7712	Back, Lower Cabinet (BIH252, BIH452 and BIH552)
6	900-9425	Back, Lower Cabinet (BIH352 and BIH552)
7	901-1810	Gusset, Left Cabinet (all models)
*	902-1810	Gusset, Right Cabinet (BIH252)
8	901-1948	Channel, Universal Side Support (all models)
9	911-4690	Rail, Left Top Filter (all models)
*	912-4690	Rail, Right Top Filter (all models)
10	910-5244	Rail, Universal Filter (all models)
11	900-1959	Bracket, Filter Lock Mounting (all models)
12	900-1957	Lock, Filter (all models)
13	809-0422	Screw, 10-32 x .4-inch Shoulder (all models)
14	809-0189	Washer, ¼-inch SS Flat
15	809-0053	Nut, 10-32 Hex
16	900-7687	Channel, Side Base (all models)
17		Channel, Rear Base
	900-7686	BIH252
	900-9420	BIH352
	900-2390	BIH452
	900-9555	BIH552
18		Channel, Front Base
	900-4787	BIH352
	900-2389	BIH452
	9009556	BIH552
19	806-5209	Leg Pad Assembly (all models)
20	809-0191	Washer, ¼-inch Lock (all models)
21	826-1389	Screw, ¼-20 x ¾-inch Hex Head (all models) (Pkg. of 10)
22	810-0944	Caster with Brake, Front (all models)
23	810-0327	Caster, Rear (all models)
24		Shield
	900-2452	BIH352
	900-2453	BIH452
	900-9601	BIH552
25	826-1374	Screw, #10 x ½-inch Hex Washer Head (cabinet screw)(Pkg. of 25)
26	900-4798	Support, Long Cross (all models – not used on CE units)
27	900-2562	Support, Short Cross (all models – not used on CE units)
28		Brace, Top Front
	900-7033	BIH252
	900-9248	BIH352
	900-2393	BIH452
	900-9558	BIH552
29		Brace, Top Rear
	900-7708	BIH252
	900-7709	BIH352

* Not illustrated.

LIST CONTINUED ON NEXT PAGE

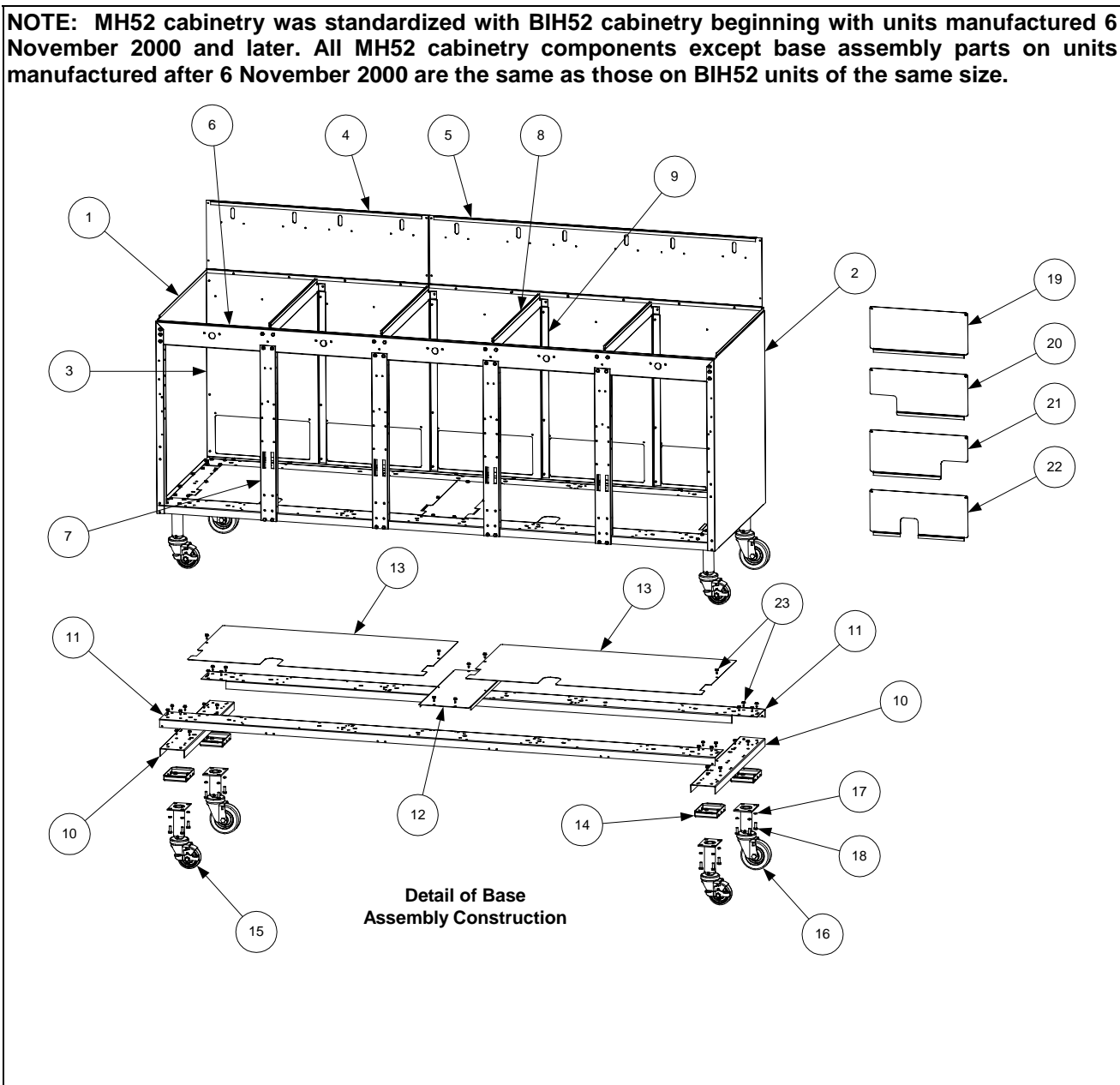
4.2.2 BIH52 Cabinet Components (Batteries) cont.

ITEM	PART #	COMPONENT
	900-2391	BIH452
	900-9557	BIH552
30	900-7710	Post, Cabinet (all models)
31	900-7358	Divider, Cabinet (all models)
32		Post, Short Door
	900-4797	All non-CE models.
	900-2437	All CE models.
33	900-4799	Post, Long Door (BIH352, BIH452 and BIH552)
*	809-0413	Spacer, Door Post (1/4-inch ID x 4mm nylon washer)

* Not illustrated.

4.2.3 MH52 Cabinet Components (Batteries)

NOTE: MH52 cabinetry was standardized with BIH52 cabinetry beginning with units manufactured 6 November 2000 and later. All MH52 cabinetry components except base assembly parts on units manufactured after 6 November 2000 are the same as those on BIH52 units of the same size.



4.2.3 MH52 Cabinet Components (Batteries) cont.

ITEM	PART #	COMPONENT
1		Side, Left Cabinet (all models)
	911-7036SP	Before 6 Nov 2000
	911-7688SP	After 5 Nov 2000
2		Side, Right Cabinet (all models)
	912-7036SP	Before 6 Nov 2000
	912-7688SP	After 5 Nov 2000
3		Back, Lower Cabinet
		Before 6 Nov 2000
	900-2652	MH252
	900-2651	MH352
	900-4915	MH452
	900-9600	MH552
		After 5 Nov 2000
	900-7712	MH252, MH452, and MH552 (18-inches x 31-inches)
	900-9425	MH352 and MH552 (18-inches x 46.5-inches)
4		Back, Upper Cabinet, MH252 and MH552
	900-2411	Before 6 Nov 2000 (10.2-inches x 31.1-inches)
	900-7714	After 5 Nov 2000 (18.72-inches x 31.24-inches)
5		Back, Upper Cabinet, MH352 and MH552
	900-2412	Before 6 Nov 2000 (10.2-inches x 46.6-inches)
	900-9424	After 5 Nov 2000 (18.72-inches x 46.88-inches)
*		Back, Upper Cabinet, MH452
	900-2413	Before 6 Nov 2000 (9.66-inches x 62.36-inches)
	900-7714	After 5 Nov 2000 (18.72-inches x 31.24-inches)
6		Brace, Top Front
	900-7033	MH252
	900-9248	MH352
	900-2393	MH452
	900-9558	MH552
*		Brace, Top Rear (used only on units built after 05 Nov 2000)
	900-7708	MH252
	900-7709	MH352
	900-2391	MH452
	900-9557	MH552
7		Post, Door (all models)
	900-7032	Before 6 Nov 2000
	900-4799	After 5 Nov 2000
*	809-0413	Spacer, Door Post (1/4-inch ID x 4mm nylon washer)
8		Divider, Cabinet (all models)
	900-7356	Before 6 Nov 2000
	900-7358	After 5 Nov 2000
9		Brace, Back Support (all models)
	900-7053	Before 6 Nov 2000
	900-7710	After 5 Nov 2000
10		Channel, Cabinet Base Left and Right Side (all models)
	900-7035	Before 6 Nov 2000
	900-7687	After 5 Nov 2000

* Not illustrated.

LIST CONTINUED ON NEXT PAGE

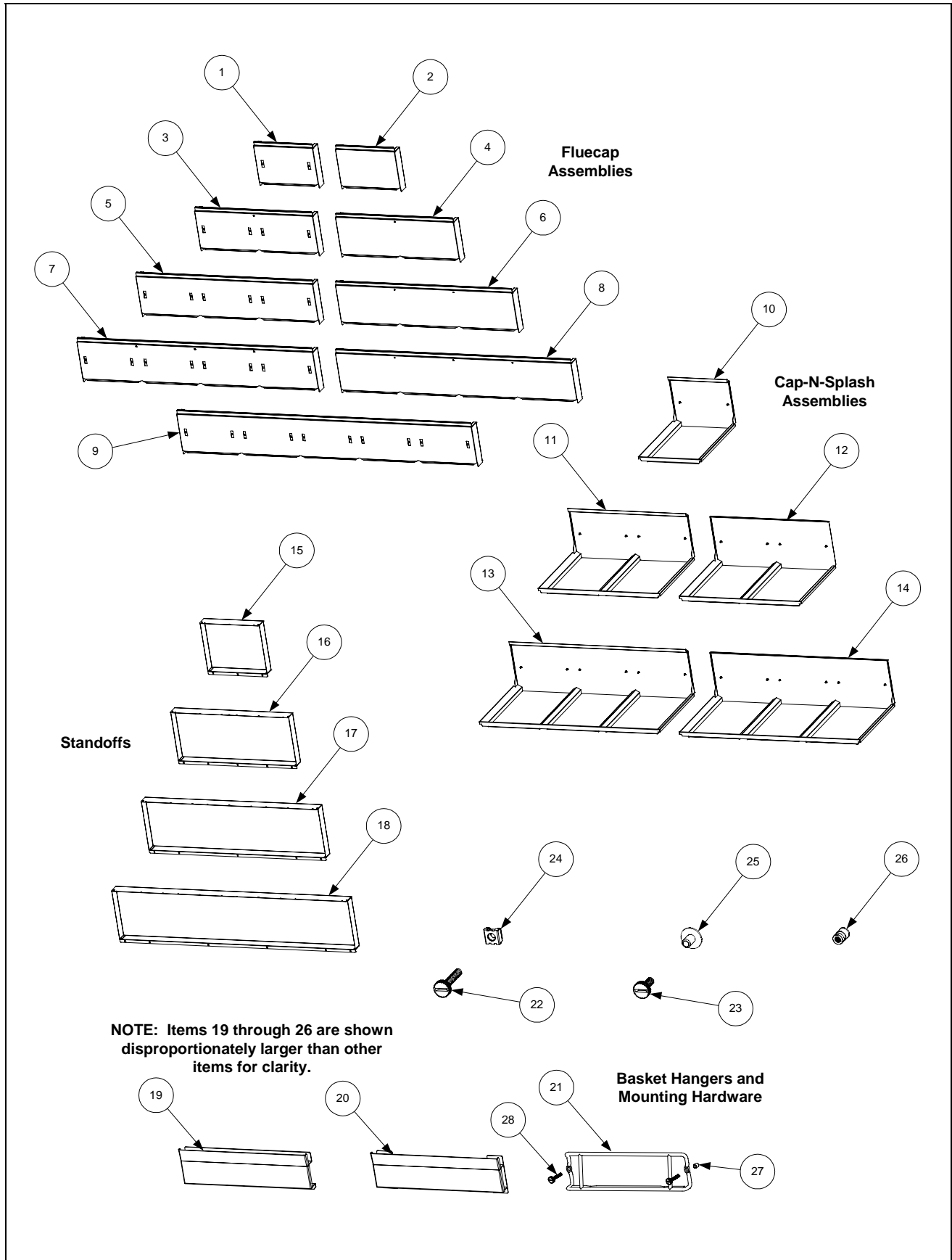
4.2.3 MH52 Cabinet Components (Batteries) cont.

ITEM	PART #	COMPONENT
11		Channel, Cabinet Base Front and Rear
		MH252
	900-7034	Before 6 Nov 2000
	900-7686	After 5 Nov 2000
		MH352
	900-9249	Before 6 Nov 2000
	900-9420	After 5 Nov 2000
		MH452
	900-4906	Before 6 Nov 2000
	900-2390	After 5 Nov 2000
		MH552
	900-9611	Before 6 Nov 2000
	900-9555	After 5 Nov 2000
12		Support, Center Base (MH452, MH552)
	900-4907	Before 6 Nov 2000
	200-0769	After 5 Nov 2000
13		Shield, Cabinet Base
		MH252, MH452
	900-2527	Before 6 Nov 2000 (18-inches x 25.2-inches) (MH452 uses 2)
	200-0772	After 5 Nov 2000 (17.75-inches x 25.06-inches) (MH452 uses 2)
		MH352
	900-2528	Before 6 Nov 2000 (18-inches x 17.5-inches) plus 900-2527
	200-0771	After 5 Nov 2000 (17.75-inches x 40.7-inches)
		MH552
	900-9623	Before 6 Nov 2000 (18-inches x 33-inches)
		After 5 Nov 2000 uses 1 each of 200-0771 and 200-0772
14	806-5209	Leg Pad Assembly (all models)
15	810-0944	Caster with Brake, Front (all models)
16	810-0327	Caster, Rear (all models)
17	809-0191	Washer, ¼-inch Lock (all models)
18	826-1389	Screw, ¼-20 x ¾-inch Hex Head (all models) (Pkg. of 10)
19	900-2648	Cover, MH52 Rear Access (no notch)
20	900-2649	Cover, MH52 Rear Access (notch on right corner when viewed from rear)
21	900-2650	Cover, MH52 Rear Access (notch on left corner when viewed from rear)
22	900-5482	Cover, MH52 Rear Access (notch in center)
23	826-1374	Screw, #10 x ½-inch Hex Washer Head (cabinet screw) (Pkg. of 25)

* Not illustrated.

THIS PAGE INTENTIONALLY LEFT BLANK

4.2.4 BIH52/MH52 Cap-N-Splash Assemblies, Fluecaps, Standoffs and Related Parts

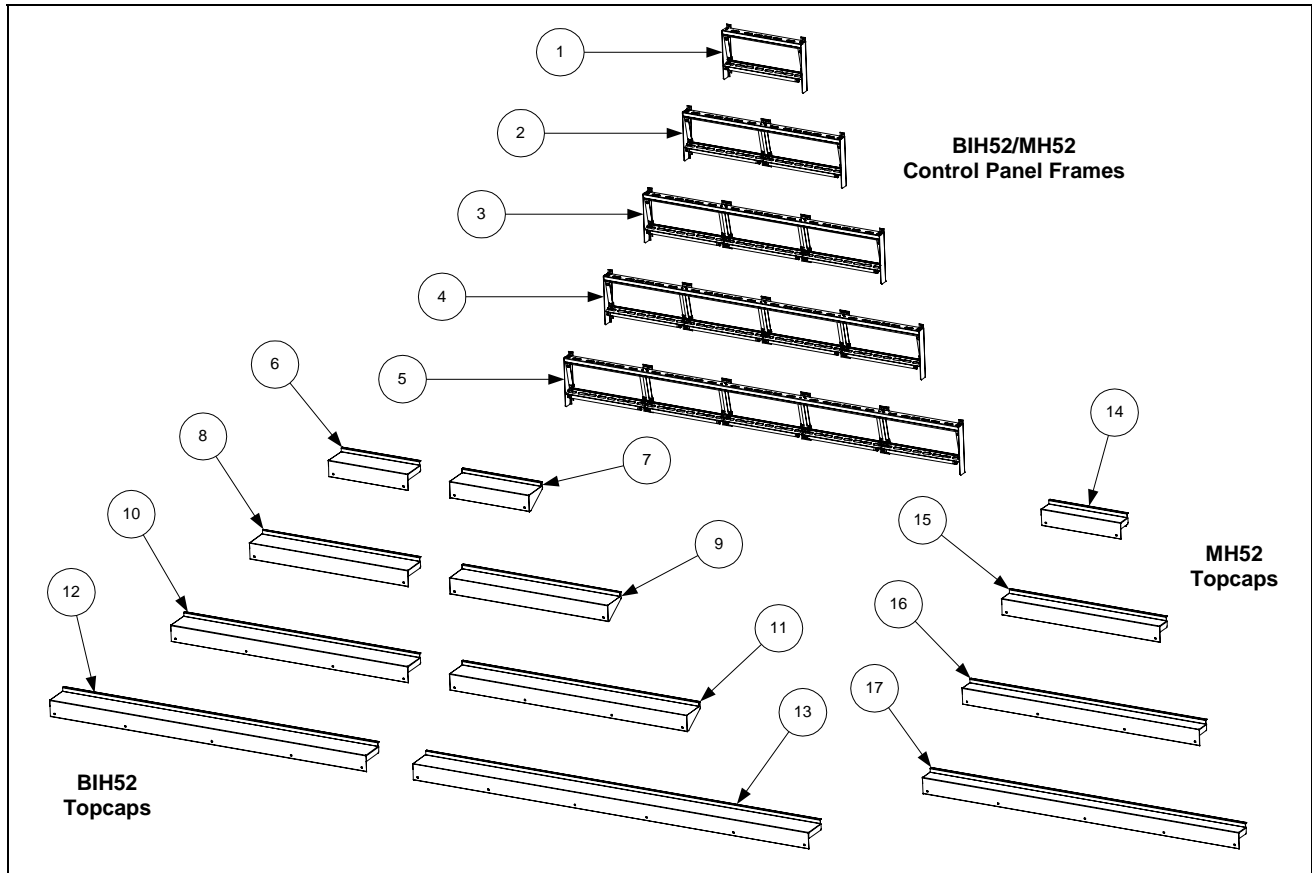


ITEM	PART #	COMPONENT
		Fluecap Assemblies
1	910-2414	BIH152/MH152 (standard)
2	900-7921	BIH152/MH152 (for units with Cap-N-Splash)
3	823-2544	BIH252/MH252 (standard)
4	900-7926	BIH252/MH252 (for units with Cap-N-Splash)
5	823-2545	BIH352/MH352 (standard)
6	900-7927	BIH352/MH352 (for units with Cap-N-Splash)
7	823-2546	BIH452/MH452 (standard)
8	900-7928	BIH452/MH452 (for units with Cap-N-Splash)
9	823-2887	BIH552/MH552 (standard)
*	900-2447	Flue Clip Support
	Old	Cap-N-Splash Assemblies (See Note)
10	823-2276	BIH152/MH152 (<i>New 823-3066</i>) Kit 826-1223
11	823-2277	BIH252/MH252 (<i>New 823-3067</i>) Kit 826-1218
12	823-2833	JBH252 (Japanese units)
13	823-2278	BIH352/MH352 (<i>New 823-3068</i>) Kit 826-1217
14	823-2879	JBH352 (Japanese units)
*	823-2279	BIH452 (<i>New 823-3070</i>) Kit 826-1216
*	-----	BIH552 (<i>New 823-3069</i>)
		Standoffs
15	900-2406	BIH152/MH152
16	900-2407	BIH252/MH252
17	900-2408	BIH352/MH352
18	900-2409	BIH452/MH452
*	200-6556	BIH552/MH552
		Basket Hangers and Mounting Hardware
19	823-0782	Solid (old design)
20	823-1618	Solid (new design) for drop in probes
21	810-2793	Wire Form (with .330-inch mounting holes)
22	809-0171	Thumbscrew, 1/4-20 x 1 3/8-inch
23	809-0402	Thumbscrew, 1/4-20 x 1/2-inch
24	826-1351	Nutsert, 1/4-20 Square (for use on standard fluecap) (Pkg. of 10)
25	809-0535	T-Nut, 1/4-20 x 7/16-inch (for use on Cap-N-Splash assembly)
26	809-0079	Nutsert, 1/4-20 Round (for use on early-production Cap-N-Splash)
27	809-0921	Spacer, Basket Hanger
28	809-0989	Thumbscrew, 1/4-20 x 1-inch

* Not illustrated.

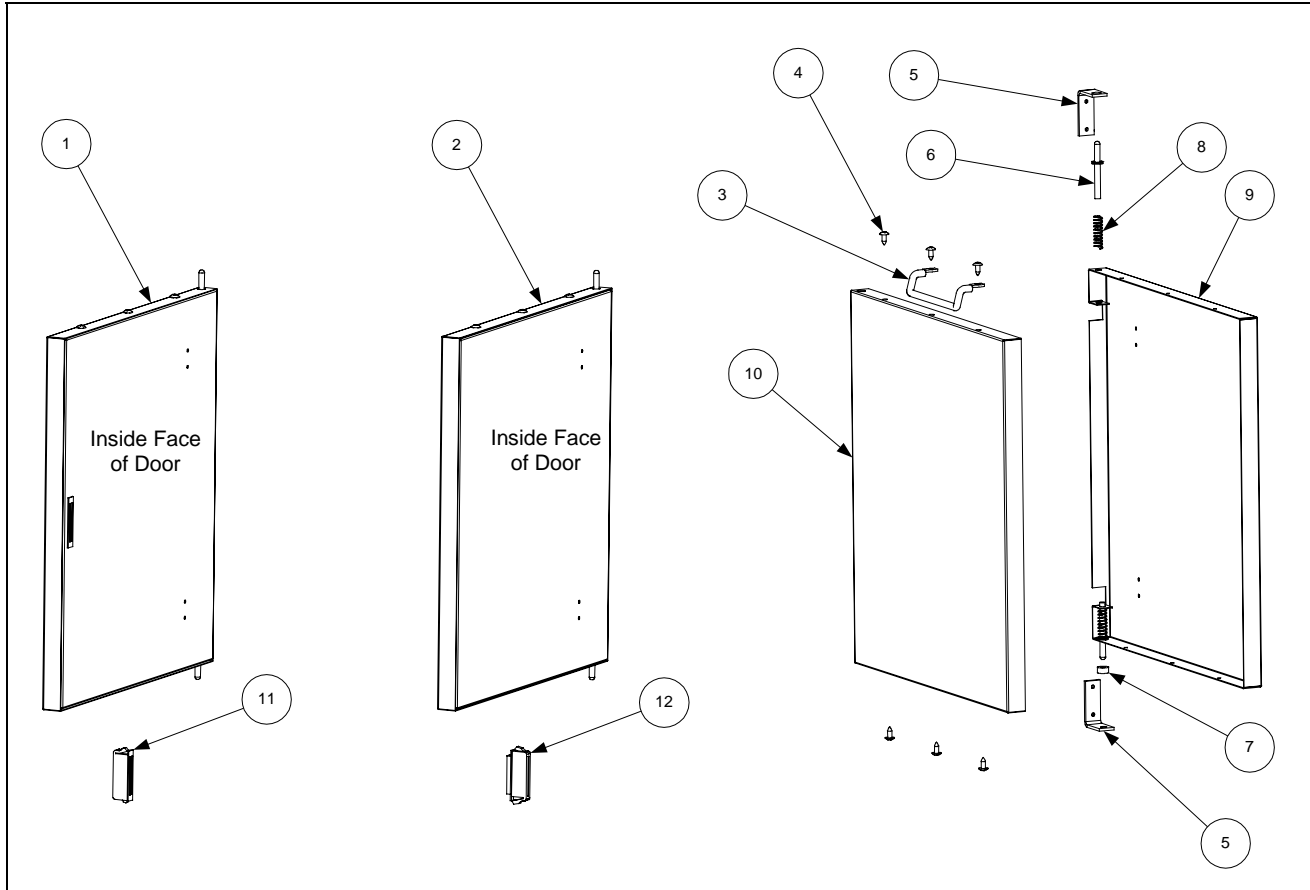
NOTE: In August 2001, a design change required that all models above serial # 0108 replacing the Cap-N-Splash must also replace the topcap. The new topcap and Cap-N-Splash are not interchangeable with the previous one.

4.2.5 BIH52/MH52 Control Panel Frames and Topcaps



ITEM	PART #	COMPONENT
1	806-6137SP	BIH152/MH152 Control Panel Frame Assembly
2	806-4819SP	BIH252/MH252 Control Panel Frame Assembly
3	806-4820SP	BIH352/MH352 Control Panel Frame Assembly
4	806-5963SP	BIH452/MH452 Control Panel Frame Assembly
5	806-9750	BIH552/MH552 Control Panel Frame Assembly
	Older	Topcaps – See Note on previous page.
6	824-0641	BIH152 Topcap (<i>New 823-0873</i>) w/out hole in front.
7	823-2657	JBIH152 Topcap (Japanese units)
8	824-0544	BIH252 Topcap (<i>New 823-0874</i>) w/out hole in front.
9	823-2652	JBIH252 Topcap (Japanese units)
10	824-0543	BIH352 Topcap (<i>New 823-0875</i>) w/out hole in front.
11	823-2651	JBIH352 Topcap (Japanese units)
12	824-0545	BIH452 Topcap (<i>New 823-0876</i>) w/out hole in front.
13	824-0775	BIH552 Topcap (<i>New 823-0877</i>) w/out hole in front.
14	824-0641	MH152 Topcap
15	824-0544	MH252 Topcap
16	824-0543	MH352 Topcap
17	824-0545	MH452 Topcap

4.2.6 BIH52/MH52 Door Components



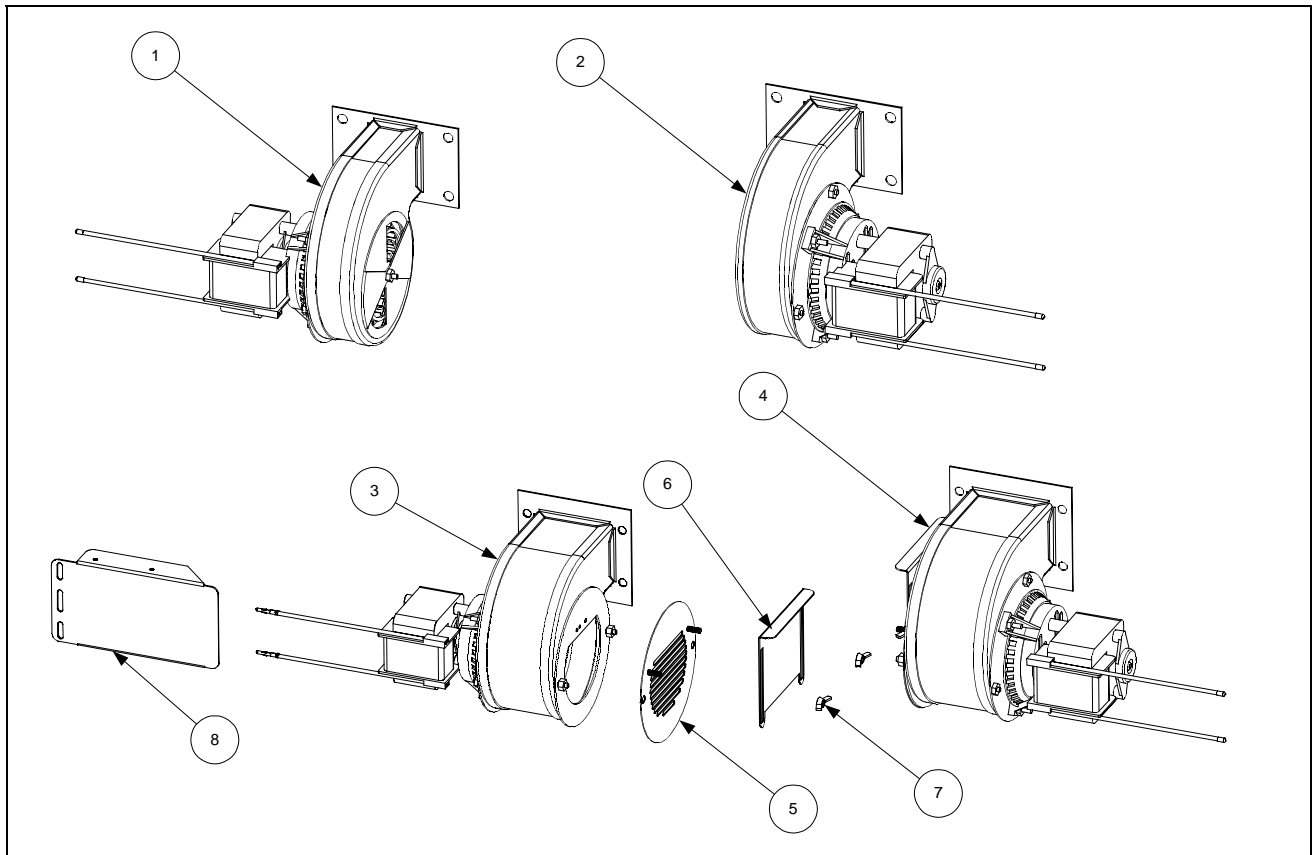
ITEM	PART #	COMPONENT
1	806-3057SP	Door Assembly with Magnet, BIH52/MH52 Complete
2	806-6545SP	Door Assembly without Magnet, BIH52/MH52 Complete
3	810-1422	Handle, Wireform Door
4	826-1379	Screw, #10 x ½-inch Phillips Truss Head (Pkg of 10)
5	810-1508	Hinge, Universal Door
*	826-1371	Screw, #8 x ½-inch Hex Head (Pkg of 25) (for attaching Item 5 to cabinet)
6	806-4487SP	Pin Assembly, Door Hinge
7	809-0193	Washer, ¼-inch Nylon Flat
8	826-1343	Spring, Door Hinge (Pkg. of 10)
9		Liner, Door
	900-2485	BIH52/MH52 Universal Door (no cutout for magnet)
	930-3667	BIH52/MH52 Door (with cutout for magnet)
10	824-0137	Panel, BIH52/MH52 Door
11	810-0066	Magnet (door-mounted, used with Item 1)
12	810-1105	Magnet (door post-mounted, used with Item 2)

* Not illustrated.

NOTE: Handle (Item 3), Hinge (Item 5), and Washer (Item 7) are not included in Door Assemblies (Items 1 and 2). These components must be ordered separately.

4.3 Combustion System, Frypot and Gas System Components

4.3.1 Blowers and Associated Parts

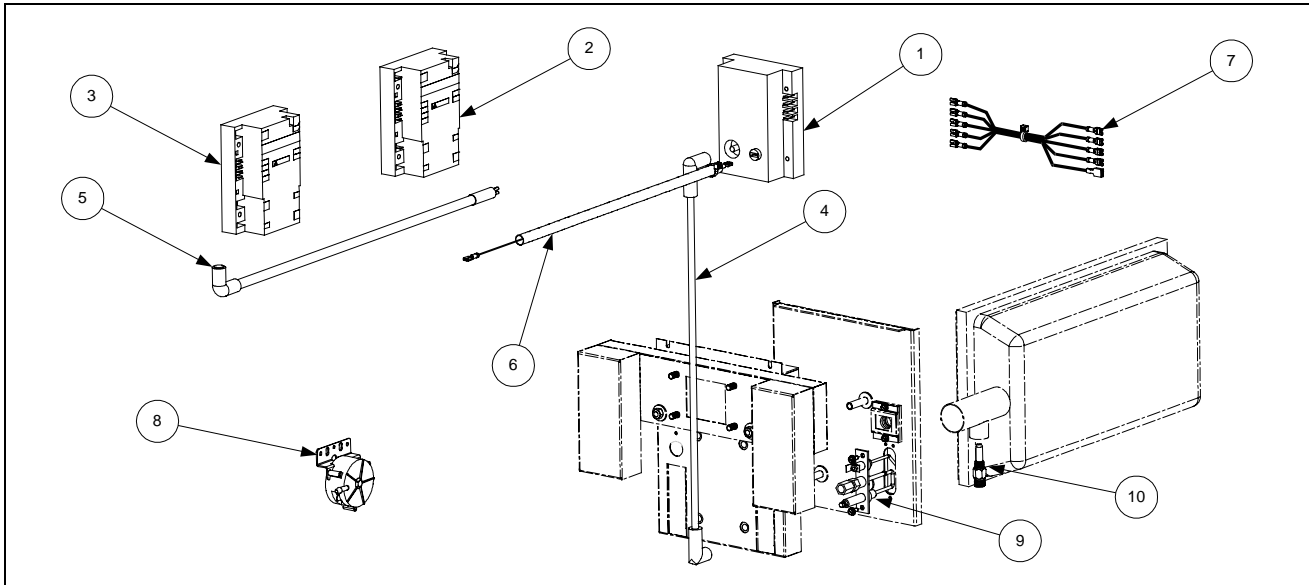


ITEM	PART #	COMPONENT
1		Blower, Left (with 1.54-inch (3.91 cm) narrow housing)
	106-2996SP	100V, 50/60 Hz
	106-2994SP	115V, 50/60 Hz
	806-5841SP	230V, 50 Hz
	106-2995SP	240V, 50/60 Hz
2		Blower, Right (with 1.54-inch (3.91 cm) narrow housing)
	806-4697SP	100V, 50/60 Hz
	106-2997SP	115V, 50/60 Hz
	806-7060SP	230V, 50 Hz
	106-2998SP	240V, 50/60 Hz
3	106-3000SP	Blower Assembly, Left 230V, 50/60 Hz (with 2.8-inch (7.11 cm) wide housing) CE and Non-CE
4	106-3001SP	Blower Assembly, Right 230V, 50/60 Hz (CE) (with 2.8-inch (7.11 cm) wide housing)
5	806-9689	Finger Guard/Air Flow Inhibitor Adapter (CE)
6	900-8699	Air Flow Inhibitor (CE)
7	826-1382	Wingnut, 8-32 (Pkg. of 10)
8	826-1426	Shield, MH52 Blower Motor
*	KIT-0155SP	High Altitude Blower Kit (required above 5000 Ft, 1525 M)

* Not illustrated.

NOTE: Items 5, 6, and 7 are components of Items 3 and 4. In CE units, they replace the rotating air shutter that is standard on 230V Blowers 106-3000SP and 106-3001SP (Items 3 and 4).

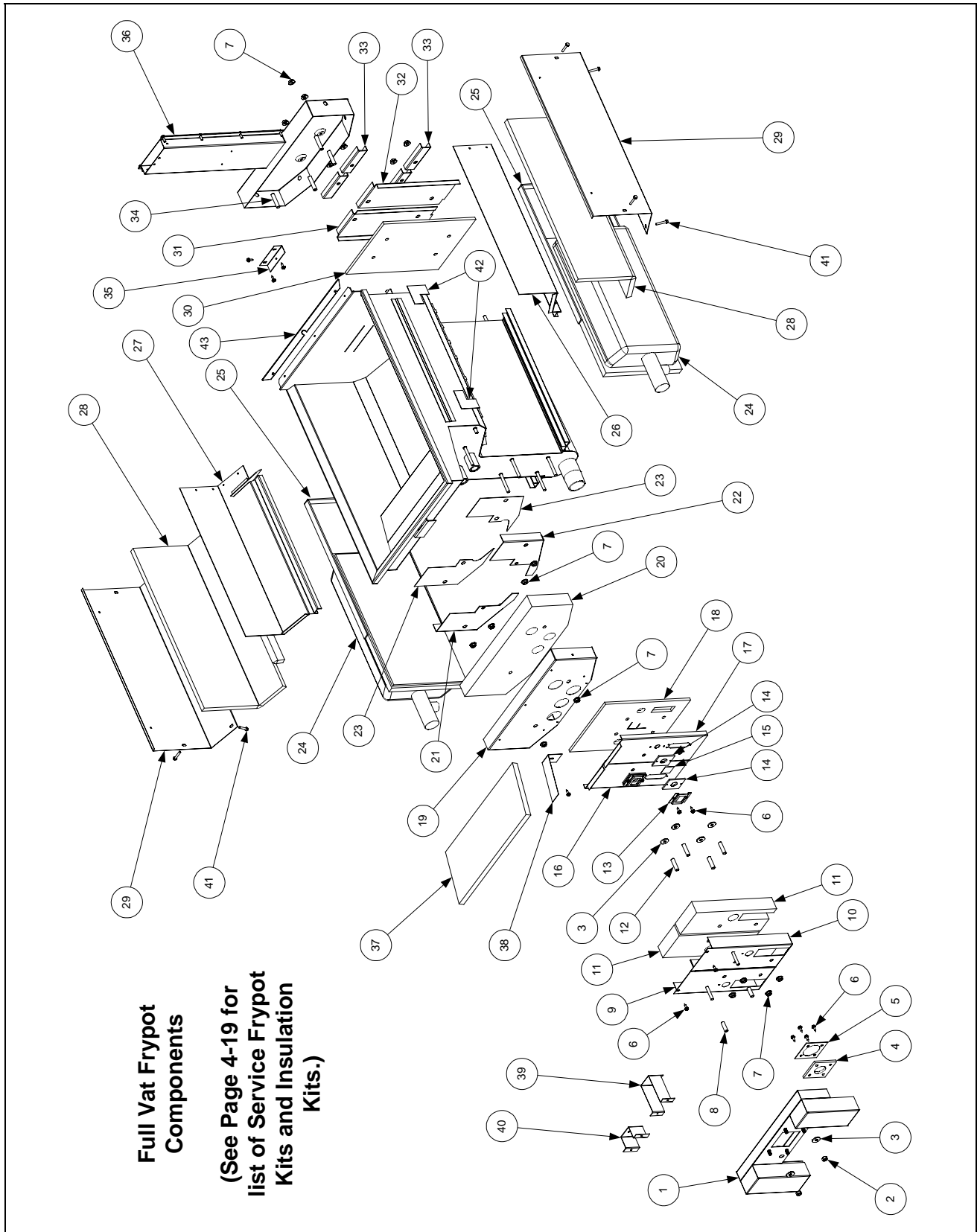
4.3.2 Ignition Sub-System Components



ITEM	PART #	COMPONENT
1	See Pg. 4-27	Ignition Module, Full and Dual Vat (original design, with fuse)
2	See Pg. 4-27	Ignition Module, Full Vat (new design, without fuse)
*	826-1346	Spacer (Pkg. of 10)
3	See Pg. 4-27	Ignition Module, Dual Vat (new design, without fuse)
4		Ignition Cable (with two 90° connectors, used with Item 1 only)
	807-1878	19-inches long
	807-1200	27-inches long
5	826-1721	Ignition Cable w/ Rajah (with 90° connector, use w/ Items 2 and 3)
	807-3483	Cable, H52 Ignition 21"
	807-3484	Connector, Rajah
6	806-6085SP	Wiring Assembly, Ignitor
7	806-6084SP	Wiring Assembly, Ignition Module
8	807-2263	Switch, Air Pressure (<i>use 807-2262 in units with 100VAC power supply</i>)
*	KIT1428	CE Export H52 Air Switch Kit
9		Ignitor and Gasket Kit (816-0059 Gasket Only)
	826-0981	Natural Gas (G20, G25)
	826-0982	Propane/Butane (G30, G31)
	826-1002	Manufactured Gas
10		Orifice
	810-1221	2.00 mm Propane/Butane (0-4999 Ft, 0-1524 M) (Japan)
	810-1325	2.05 mm Propane/Butane (G30, G31) (0-4999 Ft, 0-1524 M)
	810-0386	2.10 mm Propane/Butane (0-4999 Ft, 0-1524 M) Standard LP
	810-0413	2.16 mm Propane/Butane (G30, G31) (5000-6999 Ft, 1525-2133 M)
	812-1028	2.20 mm Propane/Butane (G30, G31) (7000-10,999 Ft, 2134-3352 M)
	812-1134	3.10 mm Natural Gas (G20, G25) (0-4999 Ft, 0-1524 M) (Japan)
	810-0403	3.40 mm Natural Gas (G20, G25) (0-4999 Ft, 0-1524 M) Standard Natural Gas
	810-0437	3.60 mm Natural Gas (G20, G25) (5000-6999 Ft, 1525-2133 M)
	812-1144	3.65 mm Natural Gas (G20, G25) (7000-8999 Ft, 2134-2743 M)
	812-1145	3.70 mm Natural Gas (G20, G25) (9000-10,999 Ft, 2744-3352 M)
	810-0642	5.95 mm Manufactured Gas (0-4999 Ft, 0-1524 M)
*	826-1196	Conversion Kit, Natural Gas (G20, G25) to Propane/Butane (G30, G31) CE
*	826-1197	Conversion Kit, Propane/Butane (G30, G31) to Natural Gas (G20, G25) CE

* Not illustrated.

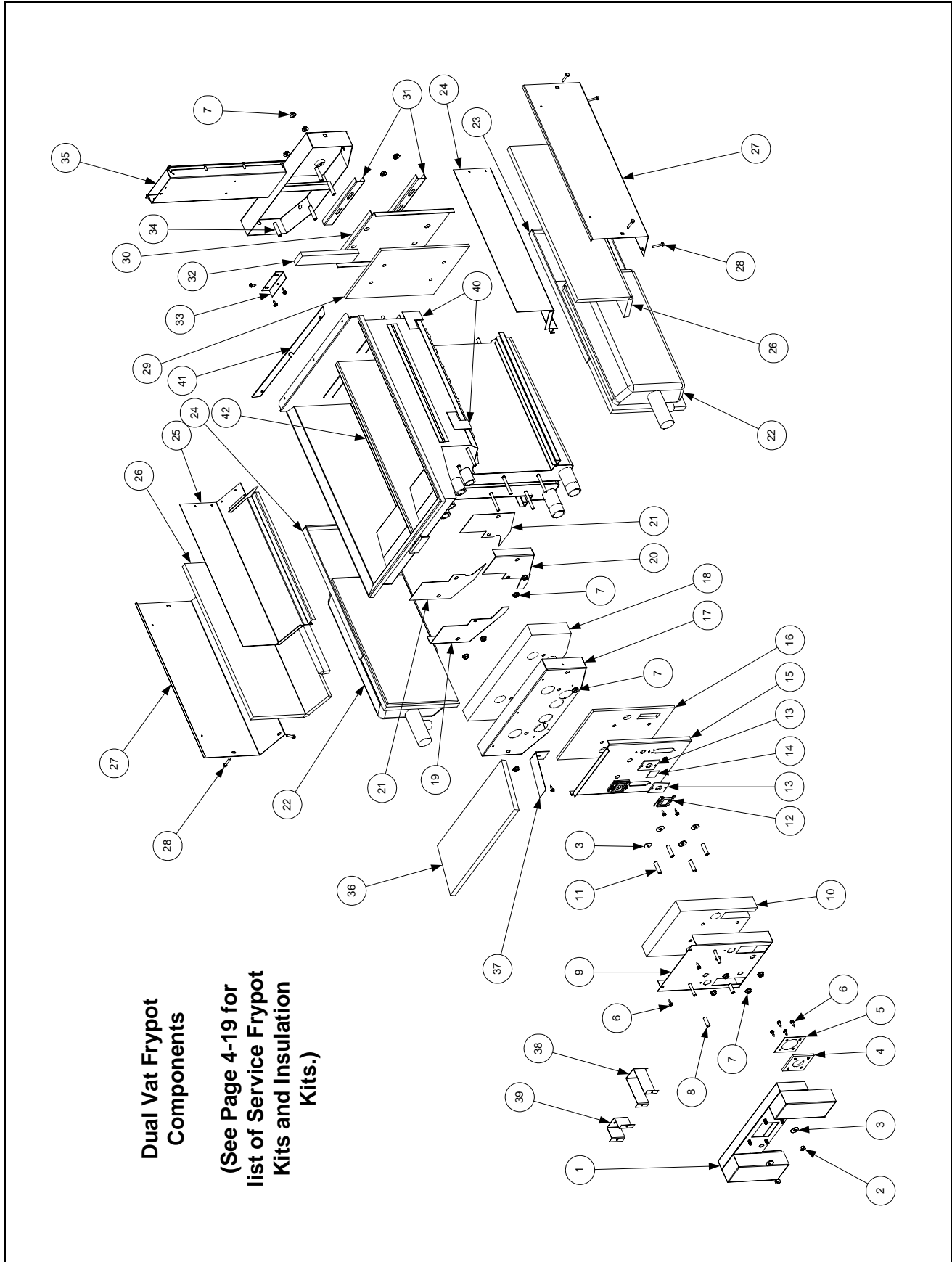
4.3.3 Frypot Assembly Components
4.3.3.1 Full Vat



ITEM	PART #	COMPONENT
1	823-0969	Plenum (NOTE: use 823-1048 on units equipped with Air Switch)
2	826-1372	Nut, 1/4-20 Hex (Pkg of 10)
3	826-1383	Washer, 1/4-inch x 3/4-inch Flat (Pkg. of 5)
4	816-0057	Gasket, Plenum
5	900-1049	Retainer, Plenum Gasket
6	826-1371	Screw, #8 x 1/2-inch Hex Head (Pkg of 25)
7	826-1368	Nut, 1/4-20 Serrated Flange (Pkg. of 10)
8	810-0500	Spacer, 1/4-inch x 15/16-inch
9	823-11691SP	Retainer, Full Vat Left Outer Combustion Chamber Insulation
10	823-1169SP	Retainer, Full Vat Right Outer Combustion Chamber Insulation
11	816-0561	Insulation, Full Vat Combustion Chamber Outer
12	826-1340	Spacer, 1/4-inch x 1 3/16-inch (Pkg of 10)
13	900-1031	Retainer, Sight Glass
14	812-0356	Gasket, Sight Glass
15	814-0048SP	Sight Glass
16	200-0935	Retainer, Full Vat Left Inner Combustion Chamber Insulation
17	200-0934	Retainer, Full Vat Right Inner Combustion Chamber Insulation
18	812-0457	Insulation, Full Vat Inner Combustion Chamber
19	200-2227	Retainer, Full Vat Frypot Outer Front Insulation
20	816-0560	Insulation, Full Vat Frypot Outer Front
21	824-0863	Seal, Full Vat Frypot Left
22	824-0864	Seal, Full Vat Frypot Right
23	812-0404	Insulation, Frypot Seal
24		Kit, Burner Replacement (for use on either side; includes Item 25)
	826-1072	Natural and Propane Gas
	826-1073	Manufactured Gas
25	816-0577	Insulation, Burner
26	823-3142	Rail, Full Vat Right Burner
27	823-1777	Rail, Full Vat Left Burner
28	812-1029	Insulation, Frypot Side
29	900-4452	Retainer, Frypot Side Insulation
30	812-0355	Insulation, Full Vat Rear Combustion Chamber
31	200-0936	Back, Left Full Vat Combustion Chamber
32	200-0937	Back, Right Full Vat Combustion Chamber
33	900-1221	Retainer, Full Vat Combustion Chamber Back
34	810-0406	Spacer, 1/4-inch x 1 7/16-inch
35	930-0818	Bracket, Flue to Frypot Mounting
36	806-5859SP	Flue Assembly, Full Vat
37	812-0993	Insulation, Frypot Upper
38	900-1515	Retainer, Frypot Upper Insulation
39	900-0857	Bracket, BIH52 Frypot Mounting
40	900-1401	Bracket, MH52 Frypot Mounting
41	809-0362	Screw, #8 x 1-inch Hex Washer Head
42	812-0706	Insulation, Burner Rail
43	900-4253	Strip, Fluecap Retainer
*	910-2474	Pot-to-Pot Gap Clip
*	813-0156	Plug, 1/2-inch NPT (for blocking off unneeded ports in service frypot)
*	813-0336	Plug, 1/2-inch NPT SS (for blocking off unneeded ports in service frypot)

* Not illustrated.

4.3.3.2 Dual Vat



ITEM	PART #	COMPONENT
1		Plenum
	823-0970SP	Standard Dual Vat
	823-1049	For use on units with Air Switch. HE Dual Vat European
	823-2181	For use on JBIH152 models only.
2	826-1372	Nut, 1/4-20 Hex (Pkg of 10)
3	826-1383	Washer, 1/4-inch x 3/4-inch Flat (Pkg. of 5)
4	816-0057	Gasket, Plenum
5	900-1049	Retainer, Plenum Gasket
6	826-1371	Screw, #8 x 1/2-inch Hex Head (Pkg of 25)
7	826-1368	Nut, 1/4-20 Serrated Flange (Pkg. of 10)
8	810-0500	Spacer, 1/4-inch x 15/16-inch
9	823-0968SP	Retainer, Dual Vat Outer Combustion Chamber Insulation
10	816-0558	Insulation, Dual Vat Combustion Chamber Outer Lower
11	826-1340	Spacer, 1/4-inch x 1 3/16-inch (Pkg of 10)
12	900-1031	Retainer, Sight Glass
13	812-0356	Gasket, Sight Glass
14	814-0048SP	Sight Glass
15	823-0983SP	Retainer, Dual Vat Inner Combustion Chamber Insulation
16	812-0458	Insulation, Dual Vat Inner Combustion Chamber
17	930-3628	Retainer, Dual Vat Frypot Outer Front Insulation
18	816-0559	Insulation, Dual Vat Frypot Outer Front
19	824-0865	Seal, Dual Vat Frypot Left
20	824-0866	Seal, Dual Vat Frypot Right
21	812-0404	Insulation, Frypot Seal
22		Kit, Burner Replacement (for use on either side; includes Item 23)
	826-1072	Natural and Propane Gas
	826-1073	Manufactured Gas
23	816-0577	Insulation, Burner
24	823-2823	Rail, Dual Vat Right Burner Side W/A
25	823-2822	Rail, Dual Vat Left Burner Side W/A
26	812-1029	Insulation, Frypot Side
27	900-4452	Retainer, Frypot Side Insulation
28	809-0362	Screw, #8 x 1-inch Hex Washer Head
29	812-0354	Insulation, Dual Vat Rear Combustion Chamber
30	200-0941	Back, Dual Vat Combustion Chamber
31	900-0914	Retainer, Dual Vat Combustion Chamber Back
32	812-0688	Insulation, Dual Vat Gas Collector
33	930-0818	Bracket, Flue to Frypot Mounting
34	810-0406	Spacer, 1/4-inch x 1 7/16-inch
35	106-1018SP	Flue Assembly, Dual Vat
36	812-0993	Insulation, Frypot Upper
37	900-1515	Retainer, Frypot Upper Insulation
38	900-0857	Bracket, BIH52 Frypot Mounting
39	900-1401	Bracket, MH52 Frypot Mounting
40	812-0706	Insulation, Burner Rail
41	900-4253	Strip, Fluecap Retainer
42	824-0541	Riser, DV Pot Divider W/A
*	910-2474	Pot-to-Pot Gap Clip
*	813-0156	Plug, 1/2-inch NPT BM (for blocking off unneeded ports in service frypot)
*	813-0336	Plug, 1/2-inch NPT SS (for blocking off unneeded ports in service frypot)

* Not illustrated.

4.3.4 Service Frypot Kits, Insulation Kits, and Miscellaneous Service Parts

Service Frypot Kits

The fully assembled service frypot kits listed below contain all components illustrated on Pages 4-15 and 4-17 except the plenum, and the plenum gasket retainer. The kits also contain two Ignitor Gaskets (816-0059). These service frypot kits are ready for installation.

- 106-1043SP – Full Vat (Manufactured Gas)
- 106-1049SP – Full Vat (Natural Gas (G20/G25))
- 106-1050SP – Full Vat (Propane/Butane (G30/G31))
- 106-1066SP – Dual Vat (Manufactured Gas)
- 106-1079SP – Dual Vat (Natural Gas (G20/G25))
- 106-1080SP – Dual Vat (Propane/Butane Gas (G30/G31))

Insulation Kits, Complete

The insulation kits listed below contain all insulation illustrated on Pages 4-15 and 4-17, respectively. The kits also contain two Ignitor Gaskets (816-0059), two Sight Glasses (814-0048SP), two Plenum Gaskets (816-0057), one Upper Frypot Insulation Retainer (900-1515), and all spacers, screws, nuts, and washers required for installing the insulation.

- 826-0929 – Full Vat
- 826-0930 – Dual Vat

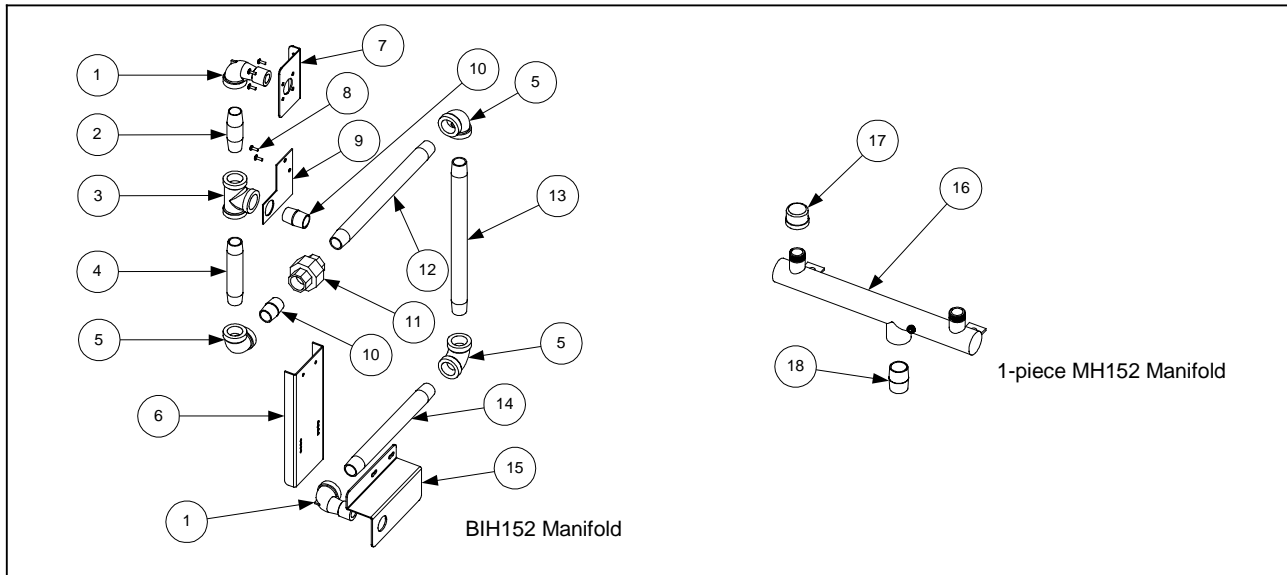
Insulation Kits, Burner

- 826-0931 – Full Vat
This kit includes the components listed. Item numbers refer to illustration on Page 4-15.
 - 816-0577 – Insulation, Burner (Item 25) (3 each)
 - 812-0457 – Insulation, Full Vat Inner Combustion Chamber (Item 18) (1)
 - 812-0355 – Insulation, Full Vat Rear Combustion Chamber (Item 30) (1)
 - 816-0057 – Gasket, Plenum (Item 4) (2 each)
- 826-0932 – Dual Vat
This kit includes the components listed. Item numbers refer to illustration on Page 4-17.
 - 816-0577 – Insulation, Burner (Item 23)
 - 812-0458 – Insulation, Dual Vat Inner Combustion Chamber (Item 17) (1)
 - 812-0354 – Insulation, Dual Vat Rear Combustion Chamber (Item 29) (1)
 - 816-0057 – Gasket, Plenum (Item 4)

Miscellaneous Frypot Service Parts

- 210-0681 – Probe Guard
- 806-6142SP – Riser Assembly, Flue (replaces upper section of Flue Assemblies 806-5859SP and 106-1018SP.)
- 900-2298 – Shutter, BIH152 Plenum

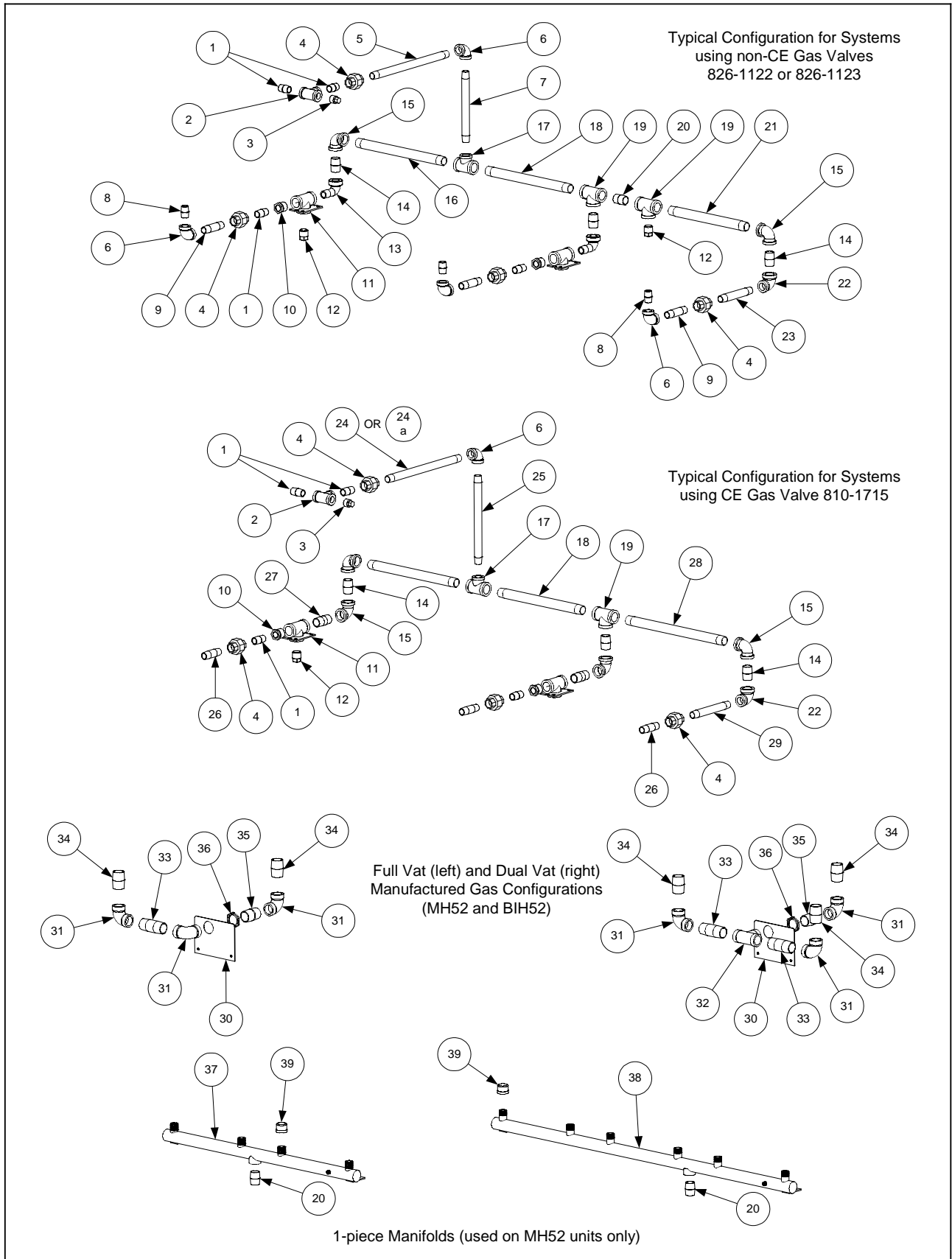
4.3.5 Gas Manifolds – Single BIH52/MH52 Units



ITEM	PART #	COMPONENT
1	813-0165	Elbow, ½-inch NPT Street x 90°
2	813-0265	Nipple, ½-inch NPT x 2½-inch
3	813-0003	Tee, ½-inch NPT
4	813-0093	Nipple, ½-inch NPT x 4-inch
5	813-0062	Elbow, ½-inch NPT x 90°
6	900-5616	Mount, BIH152 Gas Line
7	900-5596	Mount, Valve Plate (used with Non-CE Gas Valves 810-0801/0802 only)
8	809-0107	Screw, 8-32 x ¾-inch Slotted Round Head
9	900-8740	Mount, Valve Plate (used with CE Gas Valve 810-1715 only)
10	813-0022	Nipple, ½-inch NPT Close
11	813-0173	Union, ½-inch NPT
12	813-0496	Nipple, ½-inch NPT x 9.5-inch
13	813-0253	Nipple, ½-inch NPT x 10-inch
14	813-0320	Nipple, ½-inch NPT x 8-inch
15	900-5615	Support, BIH152 Gas Line
16	810-0959	Manifold, MH152 1-piece Gas
17	813-0469	Cap, ½-inch NPT Pipe (closes off unused port in full vat configurations)
18	813-0109	Nipple, ¾-inch NPT Close
*	810-0478	Dormont Hose Assembly
*	810-1425	Fitting, ½-inch Quick Disconnect x ½-inch Female NPT

* Not illustrated.

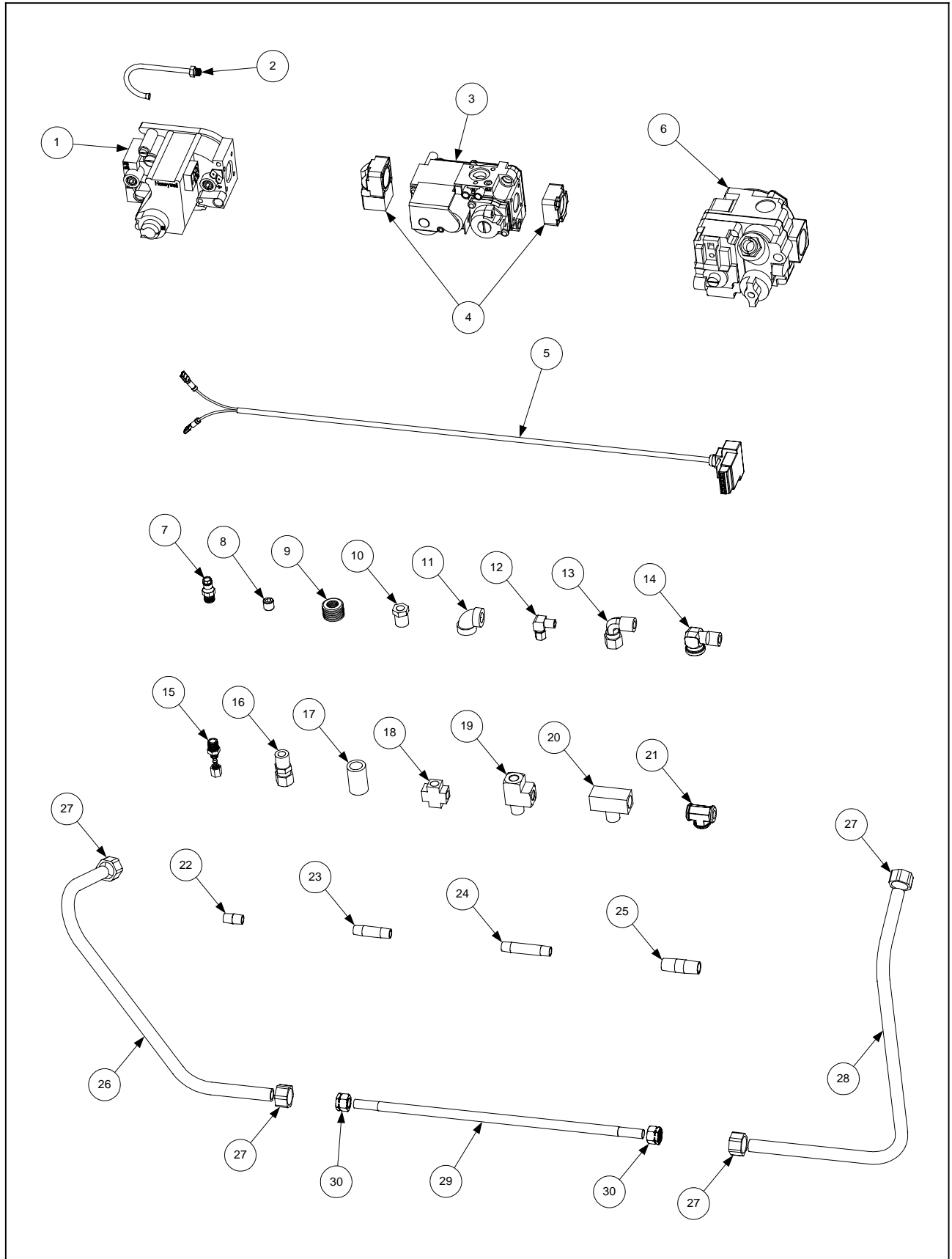
4.3.6 Gas Manifolds – BIH52/MH52 Multi-Fryer Units



NOTE: The drawings on the preceding page illustrate typical gas manifold configurations. Specific configurations vary depending upon the number and types of fryers in a battery. The purpose of the drawings is to illustrate all individual components that may be found in any given configuration. Determination of which component to use in a particular application should be based upon careful inspection of the existing components, including taking measurements when appropriate.

ITEM	PART #	COMPONENT
1	813-0087	Nipple, ½-inch NPT x 1½-inch (3.8 cm)
2	813-0003	Tee, ½-inch NPT
3	813-0156	Plug, ½-inch NPT Pipe
4	813-0173	Union, ½-inch NPT
5	813-0497	Nipple, ½-inch NPT x 12½-inch (31.8 cm)
6	813-0062	Elbow, ½-inch NPT x 90°
7	813-0320	Nipple, ½-inch NPT x 8-inch (20.3 cm)
8	813-0022	Nipple, ½-inch NPT x Close
9	813-0460	Nipple, ½-inch NPT x 3-inch (7.6 cm)
10	813-0031	Bushing, ¾-inch NPT to ½-inch Reducer
11	823-2260	Bracket, ¾-inch NPT Gas Manifold Mounting
12	813-0157	Plug, ¾-inch NPT Pipe
13	813-0168	Elbow, ¾-inch NPT x 90° Street
14	813-0110	Nipple, ¾-inch NPT x 1½-inch (3.8 cm)
15	813-0066	Elbow, ¾-inch NPT x 90°
16	813-0478	Nipple, ¾-inch NPT x 12½-inch (31.8 cm)
17	813-0271	Tee, ¾-inch NPT x ½-inch Branch
18	813-0386	Nipple, ¾-inch NPT x 12-inch (30.5 cm)
19	813-0387	Tee, ¾-inch NPT
20	813-0109	Nipple, ¾-inch NPT x Close
21	813-0479	Nipple, ¾-inch NPT x 11-inch (27.9 cm)
22	813-0068	Elbow, ¾-inch NPT x ½-inch NPT x 90°
23	813-0281	Nipple, ½-inch NPT x 5-inch (12.7 cm)
24	813-0515	Nipple, ½-inch NPT x 12-inch (30.5 cm)
24a	813-0360	Nipple, ½-inch x 14-inch (in CE BIH352-6 Natural Gas (G20/G25) units only)
25	813-0253	Nipple, ½-inch NPT x 10-inch (25.4 cm)
26	813-0265	Nipple, ½-inch NPT x 2½-inch (6.4 cm)
27	813-0112	Nipple, ¾-inch NPT x 2-inch (5.1 cm)
28	813-0476	Nipple, ¾-inch NPT x 14-inch (35.6 cm)
29	813-0096	Nipple, ½-inch NPT x 6-inch (15.2 cm)
30	900-0944	Plate, 1-inch NPT Gas Manifold Mounting
31	813-0202	Elbow, 1-inch NPT x 90°
32	813-0314	Tee, 1-inch NPT
33	813-0318	Nipple, 1-inch NPT x 3-inch (7.6 cm)
34	813-0138	Nipple, 1-inch NPT x Close
35	813-0371	Nipple, 1-inch NPT x 2-inch (5.1 cm)
36	809-0347	Nut, 1-inch NPT Retainer
37	810-0661	Manifold, 1-piece H252 Gas
38	810-0660	Manifold, 1-piece H352 Gas
39	813-0469	Cap, ½-inch NPT Pipe (closes off unused port in full vat configurations)

4.3.7 Gas Valves, Gas Lines and Fittings



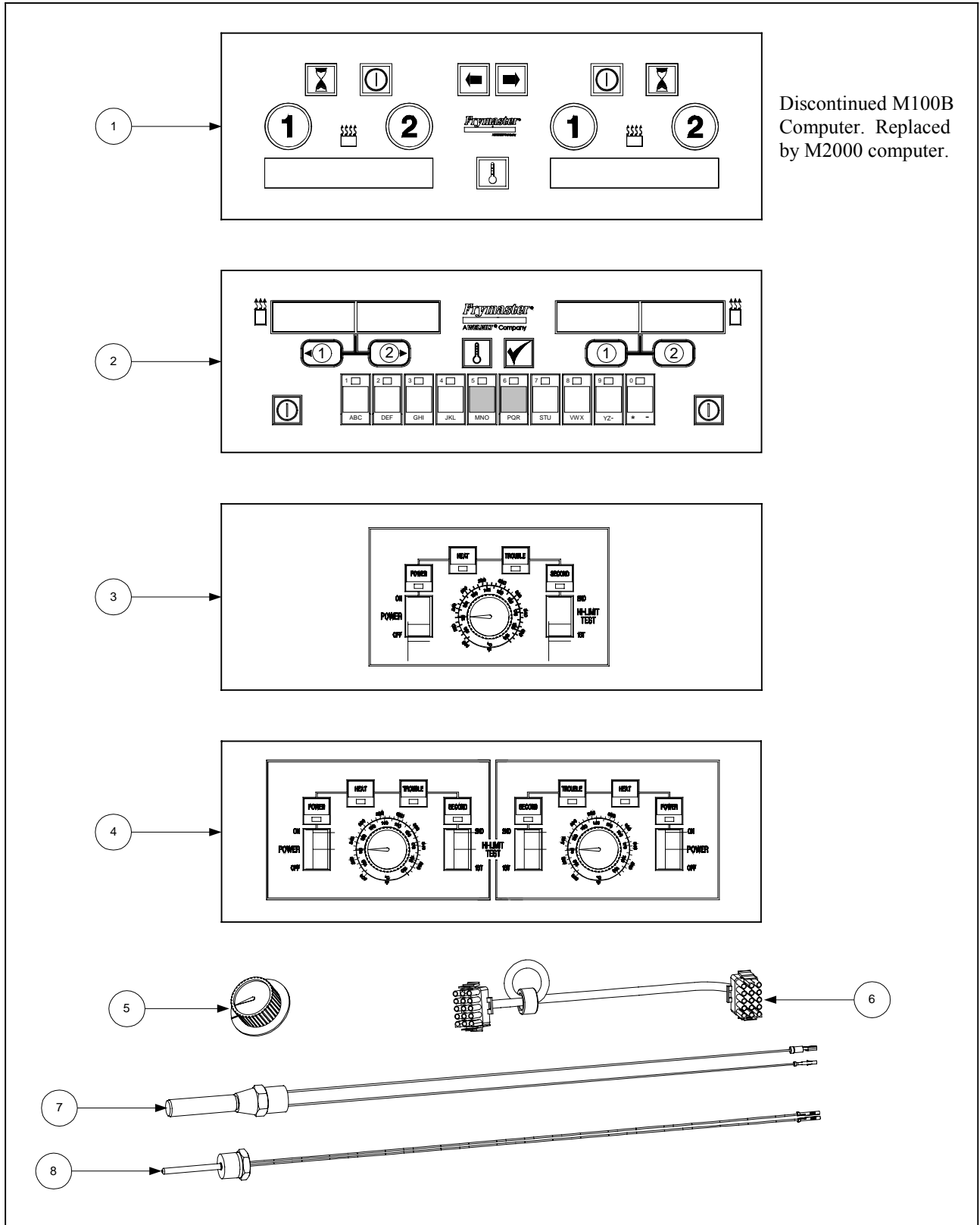
ITEM	PART #	COMPONENT
1		Gas Valve, Non-CE Kit
	826-1122	Natural Gas (G20/G25)
	826-1123	Propane (LP) Gas (G30/G31)
2	810-0691	Vent Tube (used with Item 1)
	826-1576	CE Gas Valve Kit (includes items 3 and 4)
3	810-1715	Gas Valve, Universal CE (G20/G25/G30/G31)
4	810-1041	Accessory Kit (2 straight and 2 elbow flanges, screws, O-rings, LP gas spring)
5	806-9678	Plug Assembly, CE Gas Valve (used with Item 3)
6	807-1229	Gas Valve, Manufactured Gas
7	810-1176	Tap, 1/8-inch NPT Pressure
8	813-0411	Plug, 1/8-inch NPT Allen-head Pipe
9	813-0304	Bushing, 1/2-inch to 1/4-inch NPT Reducer
10	810-1006	Bushing, 1/4-inch to 1/8-inch NPT Reducer
11	813-0004	Elbow, 90° x 1/8-inch NPT
12	813-0354	Elbow, 90° x 1/8-inch NPT x 1/8-inch Tube (Brass)
13	813-0302	Elbow, 90° x 3/8-inch Tube x 1/4-inch Male NPT (Brass)
14	813-0502	Elbow, 90° Street x 1/4-inch (Brass)
15	813-0340	Connector, 1/8-inch Tube to 1/8-inch Male NPT (Brass)
*	810-0502	Connector, 1/8-inch Tube to 1/8-inch Male NPT (Brass) (with Item 6 only)
16	810-1025	Connector, 3/8-inch Tube to 1/4-inch Male NPT (Brass)
17	813-0507	Coupling, 1/4-inch NPT (Brass)
18	813-0378	Cross Fitting, 1/2-inch Female NPT (Brass)
19	810-1026	Tee, 1/4-inch NPT Street (Brass)
20	813-0495	Tee, 1/4-inch Male NPT Branch (Brass)
21	813-0377	Tee, 1/8-inch Female NPT (Brass)
22	813-0016	Nipple, 1/8-inch NPT Close
23	813-0315	Nipple, 1/8-inch NPT x 1 1/2-inch (4.8 cm)
24	813-0405	Nipple, 1/8-inch NPT x 2-inch (5.1 cm)
25	813-0471	Nipple, 1/4-inch NPT x 1 1/2-inch (4.8 cm)
26	900-3739	Gas Tube (Left), H52 FV Manufactured Gas (pre-formed)
27	810-0503	Compression Nut (Ferrule), 1/2-inch Manufactured Gas Tube
28	900-3737	Gas Tube (Right), H52 FV Manufactured Gas (pre-formed)
*	900-3735	Gas Tube (Left and Right), H52 DV Manufactured Gas (pre-formed)
29		Flexible Stainless Steel Gasline (Flexline), 3/8-inch OD
	810-1353	9-inch (22.9 cm) Kit 826-1530 includes 2 of #30
	810-1354	12-inch (30.5 cm) Kit 826-1531 includes 2 of #30
	810-1355	15-inch (38.1 cm) Kit 826-1532 includes 2 of #30
30	810-0494	Compression Nut (Ferrule), 3/8-inch Flexible Gas Line
*		Enrichment Tube
	811-0752	5 1/2-inch (14 cm)
	811-0756	8 1/2-inch (21.6 cm)
	811-0800	12 1/2-inch (31.8 cm)
	812-0742	18-inch (45.7 cm)

— Brass Comp. Fitting 810-0502 for ignitor end
— Brass Comp. Fitting 810-0340 for gas valve end

* Not illustrated.

4.4 Electronics

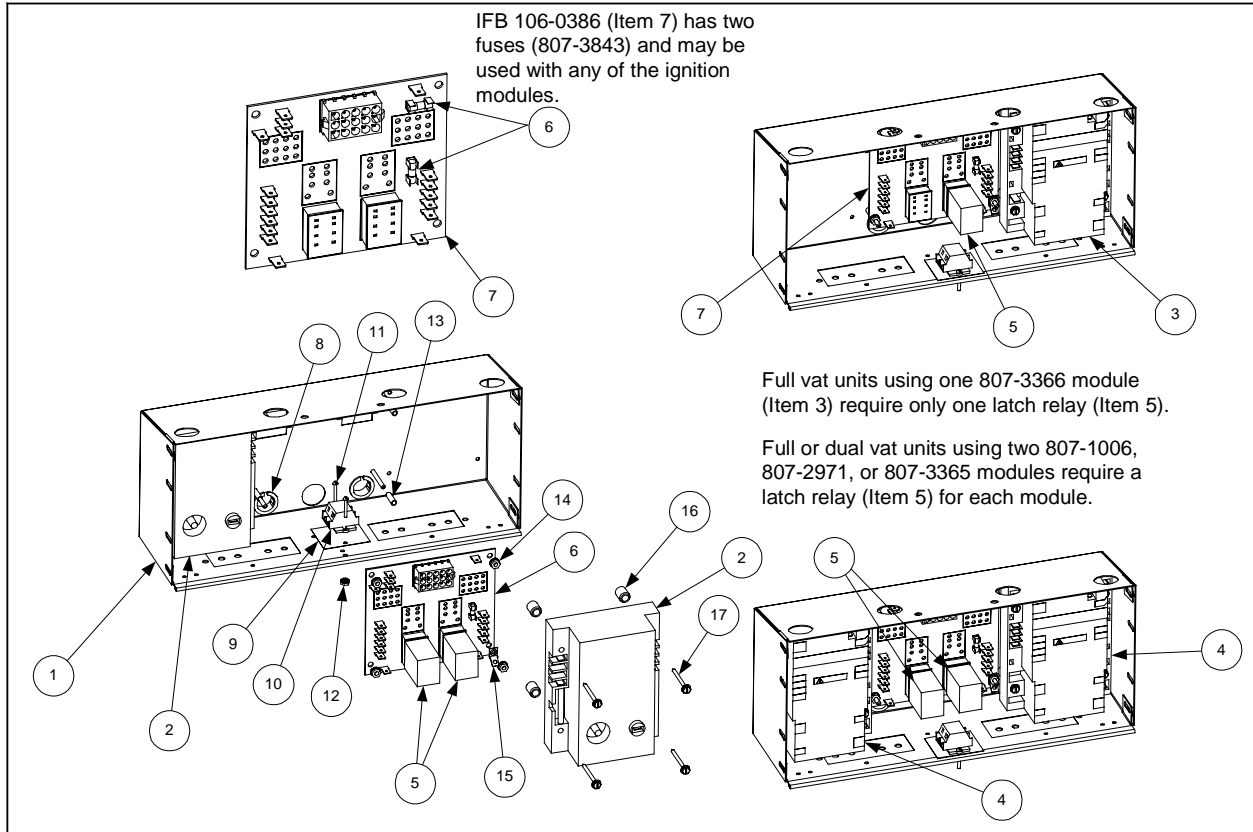
4.4.1 Computers, Controllers and Associated Components



ITEM	PART #	COMPONENT
1		Computer, McDonald's M100B has been replaced by M2000
	826-1739	U.S.,Canada and Non-CE Export with 6-second Melt Cycle - Replacement Upgrade Kit
	806-8041E	Non-CE Export with 8-second Melt Cycle (M100B Obsolete)
	806-8040	Factory-programmed in French (M100B Obsolete)
	826-1810	CE Export - Replacement Upgrade Kit
2		Computer, McDonald's M2000 Gas Fryer
	106-0529B	U.S. and Canada FV / Non-CE Export
	106-2436B	CE Export FV
3		Controller, McDonald's Full Vat Gas Fryer Solid-State
	806-3007	With 6-second Melt Cycle
	806-3571	With 8-second Melt Cycle
4		Controller, McDonald's Dual Vat Gas Fryer Solid-State
	806-3009	With 6-second Melt Cycle
	806-3572	With 8-second Melt Cycle
5	810-0387	Knob, Replacement Control (for use on Solid-State Controllers)
6	806-2071	Cable, Computer/Controller to Interface Board
7	826-1177	Thermostat, High-Limit Kit
8	806-4206	Probe Assembly, Temperature
*	826-1739	Retrofit Kit, Solid-State Controller to M100B Computer
*	826-1675	M100B to M2000 Speaker and Mount Retrofit Kit
*	806-3660	Sound Device, High Output for M100B
*	807-1617	M2000 Speaker
*	826-1032SP	Screw and Retainer Kit for computer

* Not illustrated.

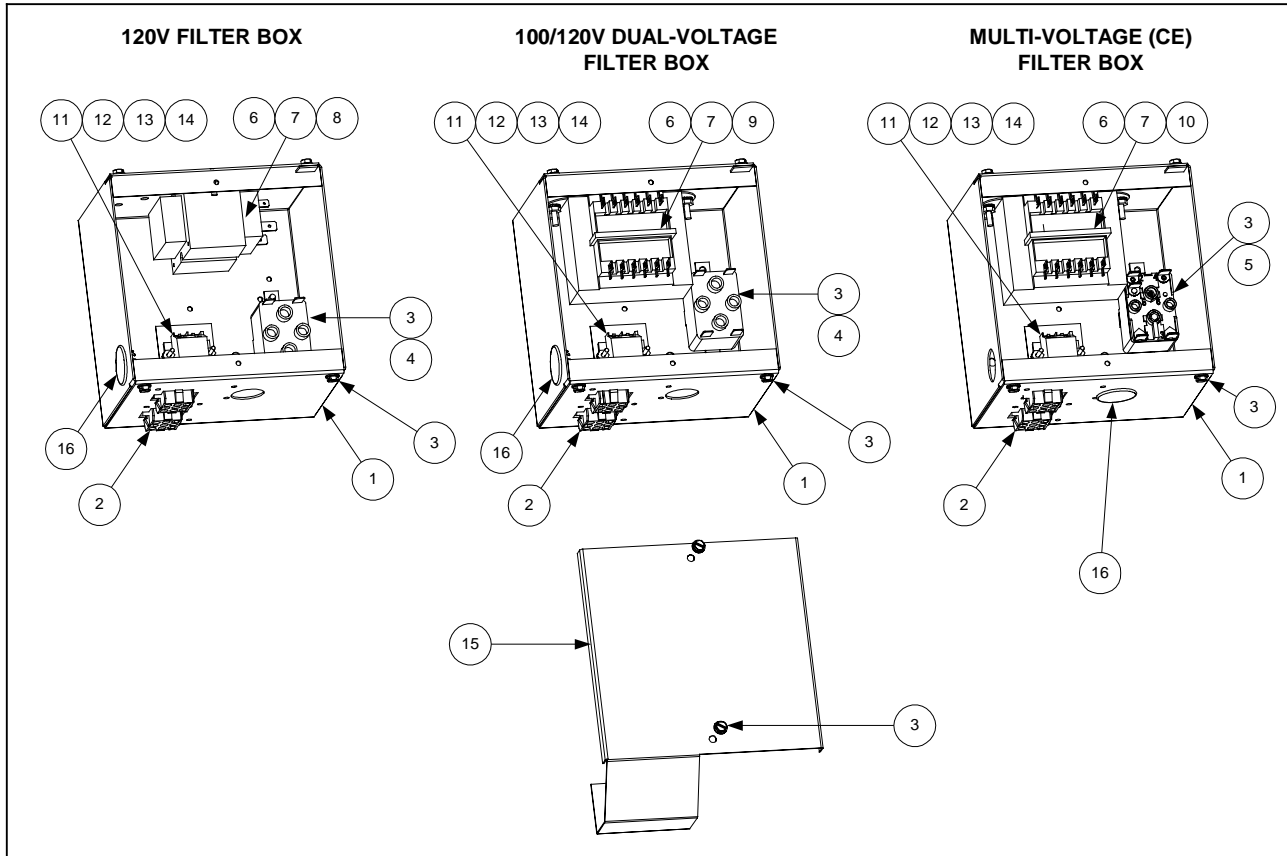
4.4.2 Component Boxes



ITEM	PART #	COMPONENT
1	200-5996	Box Assembly, One-Piece Component
2	807-1006	Ignition Module, Full or Dual Vat (fuse-protected)
*	807-2971	Ignition Module, Full or Dual Vat (fuse-protected) (Australian units only)
3	807-3366	Ignition Module, Full Vat (unfused – <i>use inline fuse 106-0531SP</i>)
4	807-3365	Ignition Module, Dual Vat (unfused – <i>use inline fuse 106-0531SP</i>)
5	807-0833	Relay, 12V 5Amp Latch
6	807-3843	Fuse, 3A 250V Subminiature
7	106-0386	Interface Board (double fuse-protected) (use with 807-3365, 807-1006 or 807-3366)
*	806-4973	Interface Board (used with 240V manufactured gas units only)
8	807-1926	Bushing, .875 Diameter Split
9	816-0217	Paper, Insulating (Items 9, 10, 11, 12 not used on BIH152 or Hong Kong units)
10	810-1164	Block, Terminal (See Item 9)
11	826-1359	Screw, 4-40 x 3/4-inch Slotted Round Head (See Item 9) (Pkg. of 25)
12	826-1366	Nut, 4-40 Keps Hex (See Item 9) (Pkg. of 25)
13	807-1241	Spacer, Interface Board (.151-inch ID x 5/8-inch)
14	809-0250	Nut, 6-32 Keps Hex
15	826-1337	Tab, Push-On Terminal (Pkg. of 5)
16	826-1346	Spacer, Ignition Module (.260-inch ID x 1/2-inch) (Pkg. of 10)
17	809-0441	Screw, #7 x 1 1/2-inch Slotted Washer Hex Head
*	810-2243	Spring, Relay Clip Hold Down
*	806-3660	Sound Device, High Output (<i>Use 807-3520 with M2000 Computers</i>)
*	807-1359	Mount, Tie-Wrap (used on CE units only)

* Not illustrated.

4.4.3 Filter Box Components

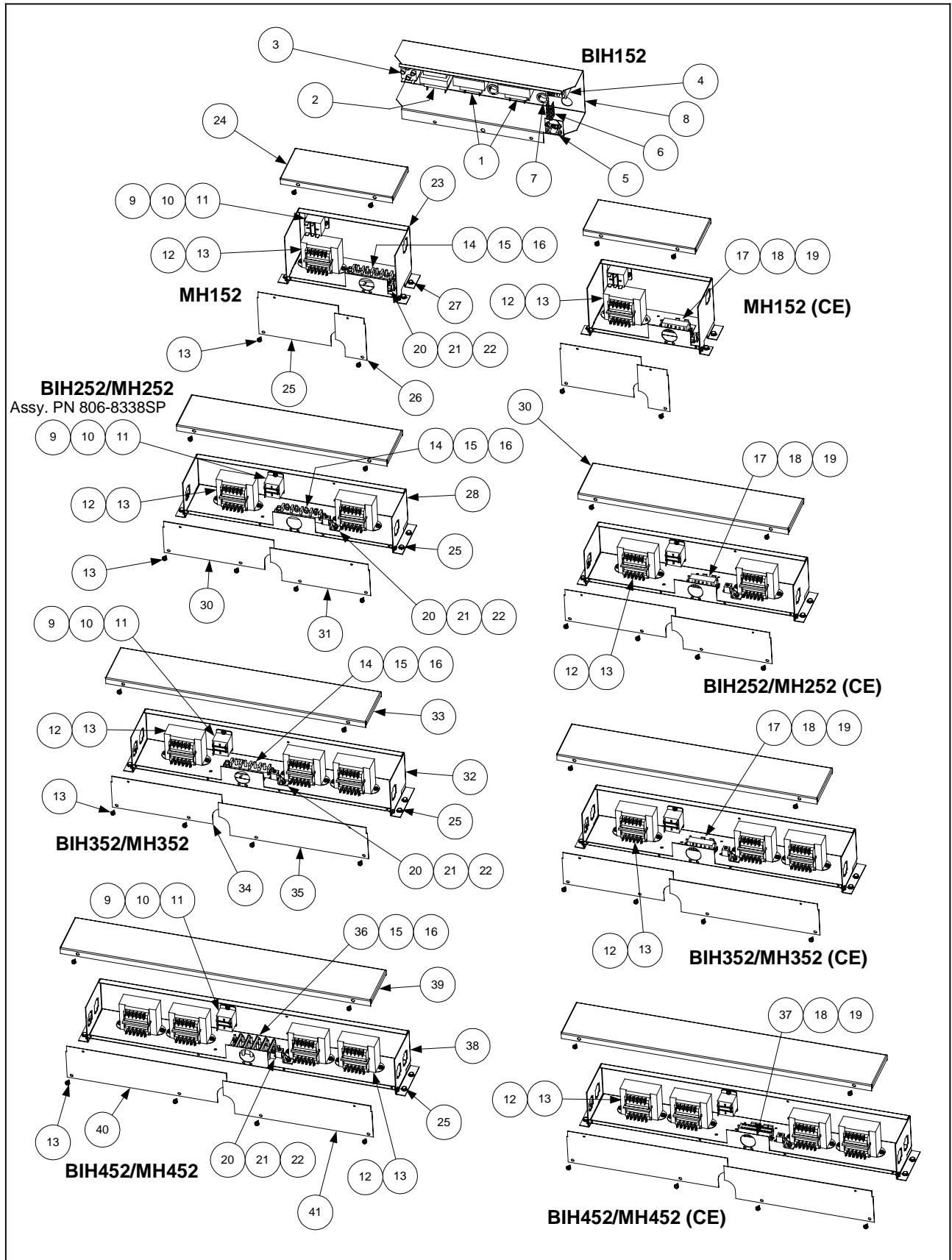


ITEM	PART #	COMPONENT
1	900-5250	Box, Filter
2	807-0156	Connector, 9-Pin Female
*	807-2518	Plug, Mate-N-Lock Keying (used w/Item 2)
3	809-0360	Screw, #8 x 3/8-inch Hex Washer Slot Head
4	807-0012	Relay, Non-CE 18 Amp 1/3-HP 24V Coil 4 Pole
5	807-2434	Relay, CE 18 Amp 1/3-HP 24V Coil 5 Pole
6	809-0096	Screw, 6-32 x 5/8-inch Slot Head
7	809-0250	Nut, 6-32 Keps Hex
8	807-0800	Transformer, 120/24VAC 50/60Hz 50VA
9	807-2176	Transformer, Dual Voltage (100 or 120/24/12VAC) 50/60Hz 50VA
10	807-1999	Transformer, Multi-Voltage (208, 220, 230, 240/24VAC) 50/60Hz 50VA
11	816-0217	Paper, Insulating
12	810-1164	Block, Terminal
13	826-1359	Screw, 4-40 x 3/4-inch Round Slot Head (Pkg. of 25)
14	826-1366	Nut, 4-40 Keps Hex (Pkg. of 25)
15	900-5530	Cover, Filter Box
16	810-0044	Plug, .875 Button
*	806-8021SP	Upper Plug Heater Plug
*	806-7494SP	Lower Plug Heater Plug

* Not illustrated.

NOTE: See Page 4-31 for associated wiring assemblies.

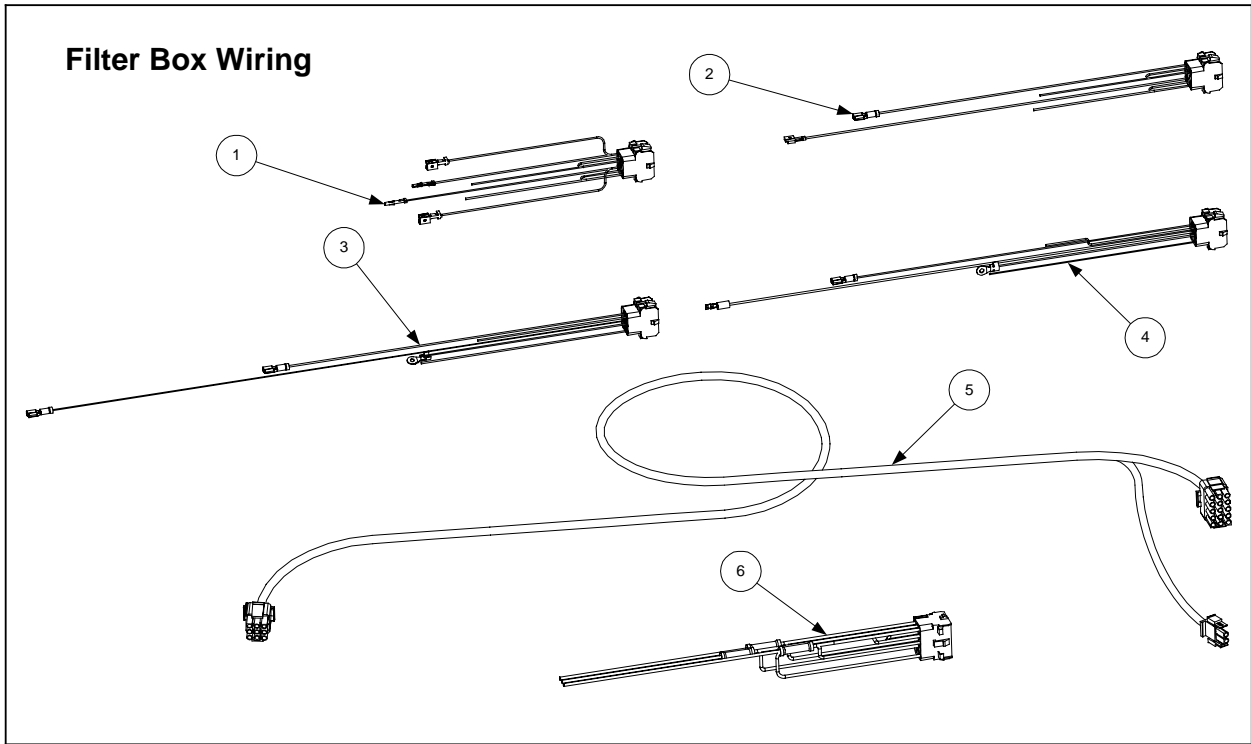
4.4.4 Transformer Box Components



ITEM	PART #	COMPONENT
1		Transformer (for use in BIH152 units)
	807-1238	100/24VAC 50 Hz
	807-0800	120/24VAC 50/60 Hz
2	807-0855	Transformer, 120/12VAC 50/60 Hz (for use in BIH152 units)
3	807-0012	Relay, 18 Amp 24VDC Coil
4	807-0273	Block, 16-Pin Terminal
5	807-1612	Clamp, 3/8-inch Strain Relief
6	807-0255	Jumper, Double
7	810-0045	Bushing, .875-inch Diameter
*	809-0362	Screw, 8-32 x 1-inch Hex Slotted Washer Head (for mounting Items 1-4)
8	900-5560	Shield, BIH152 Transformer
9	807-1683	Relay, 15 AMP 12VDC Coil
10	826-1363	Screw, 8-32 x 1/2-inch Slotted Truss Head (Pkg. of 25)
11	809-0050	Nut, 8-32 Hex
12		Transformer (for use in MH152 and BIH252/352/452/552 units)
	807-2176	100-120/24/12VAC (used in U.S., Japanese, and Korean units) Dual Voltage
	807-1999	208-240/24/12VAC (used in CE and most export units) Dual Voltage
13	809-0360	Screw, 8-32 x 3/8-inch Slotted Hex Washer Head
14	807-1973	Block, 4-Post Threaded Terminal (used in Non-CE units)
15	826-1389	Screw, 1/4-20 x 3/4-inch Hex Head (Pkg. of 10)
16	826-1362	Nut, 1/4-20 Hex (Pkg. of 10)
*	809-0052	Nut, 10-24 Hex (for use on Item 14 and Item 36 terminal posts)
17	810-1163	Block, 3-Position Push-In Terminal (used in CE units)
18	826-1359	Screw, 4-40 x 3/4-inch Slotted Round Head (Pkg. of 25)
19	826-1366	Nut, 4-40 Keps Hex (Pkg. of 10)
20	807-0070	Terminal, Lug
21	826-1363	Screw, 8-32 x 1/2-inch Slotted Truss Head (Pkg. of 25)
22	809-0247	Nut, 8-32 Keps Hex
23	900-2697	Box, MH152 Transformer
24	900-2708	Cover, MH152 Transformer Box Top
25	900-2703	Cover, MH152 Transformer Box Left
26	900-2709	Cover, MH152 Transformer Box Right
27	826-1374	Screw, #10 x 1/2-inch Self-Tapping Slotted Hex Washer Head (Pkg of 25)
28	900-5924	Box, BIH252/MH252 Transformer
29	900-5927	Cover, BIH252/MH252 Transformer Box Top
30	900-5928	Cover, BIH252/MH252 Transformer Box Left
31	900-5923	Cover, BIH252/MH252 Transformer Box Right
32	900-5925	Box, BIH352/MH352 Transformer Box
33	900-5929	Cover, BIH352/MH352 Transformer Box Top
34	900-5928	Cover, BIH352/MH352 Transformer Box Left
35	900-5930	Cover, BIH352/MH352 Transformer Box Right
36	807-2608	Block, 8-Post Threaded Terminal (used in Non-CE units)
37	810-1162	Block, 4-Position Push-In Terminal (used in CE units)
38	900-5926	Box, BIH452/MH452 Transformer
39	900-5931	Cover, BIH452/MH452 Transformer Box Top
40	900-5932	Cover, BIH452/MH452 Transformer Box Left
41	900-5930	Cover, BIH452/MH452 Transformer Box Right
*	807-0156	Connector, 9-Pin Plug

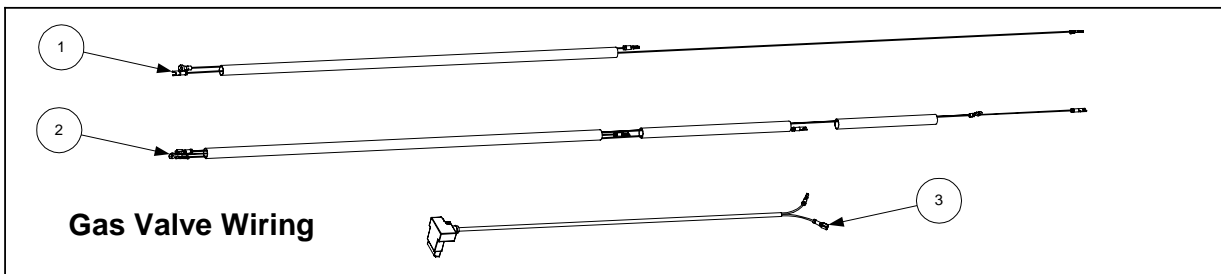
* Not illustrated.

4.4.5 Wiring

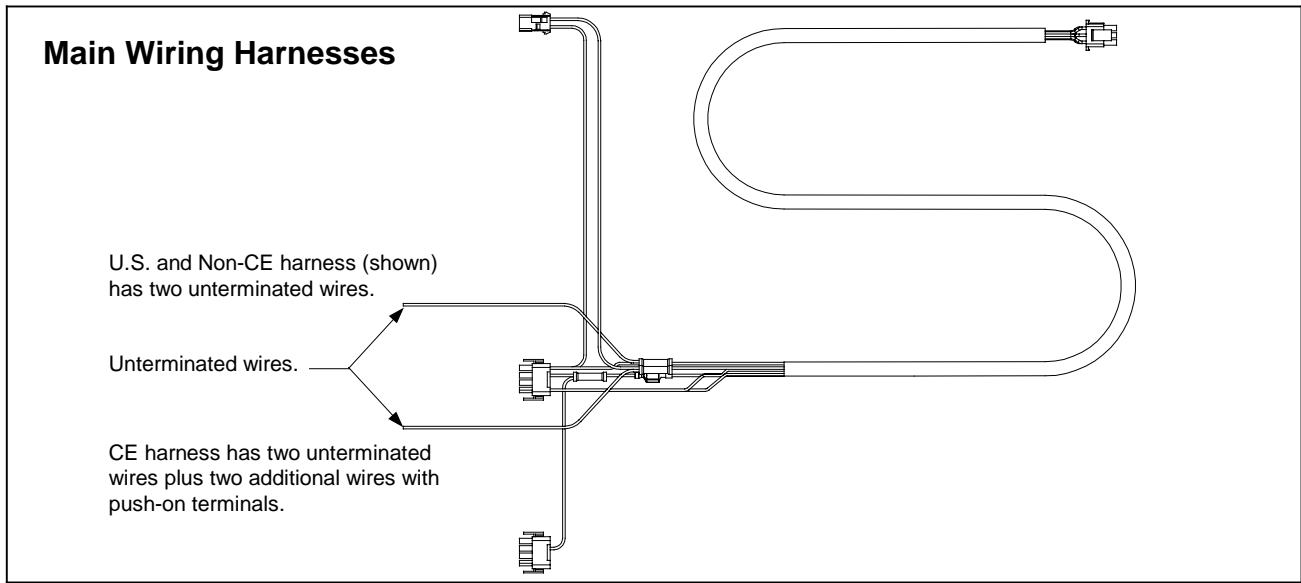


ITEM	PART #	COMPONENT
1	806-8021SP	120V U.S. and 100/120V Non-CE Export Upper 9-Pin Plug Assembly
2	806-7494SP	120V U.S. Lower 9-Pin Plug Assembly
3	806-6725SP	230V CE Upper 9-Pin Plug Assembly
4	806-6719SP	100/120V Non-CE Export and 230V CE Lower 9-Pin Plug Assembly
5	810-1062	Cable, Filter Box Lower 9-Pin Plug to 807-2001 15-Pin (C2) Connector
6	807-2001	Cable, 810-1062 C2 Connector to Filter Terminal Block
*	806-6728SP	Pump Motor to Filter Box Wiring Assembly
*	810-0366	Strain Relief 9-pin
*	WIR0287SP	120V U.S. Filter Box Internal Wiring
*	WIR0233SP	100-250V CE and Non-CE Export Filter Box Internal Wiring

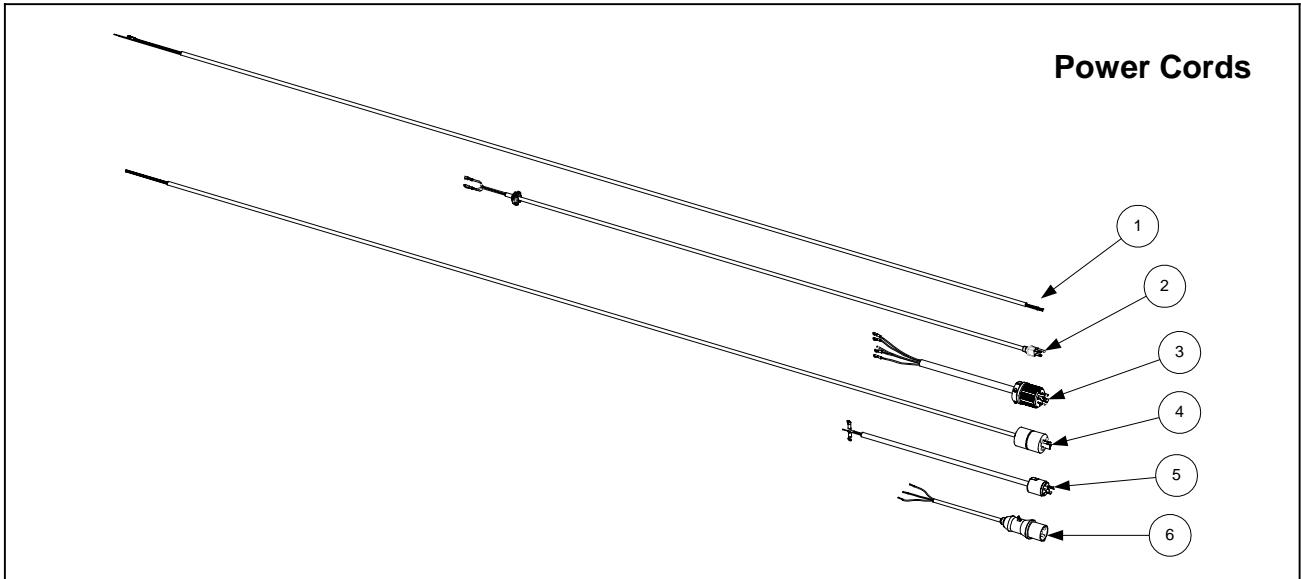
* Not illustrated.



ITEM	PART #	COMPONENT
1	806-3941SP	Harness, Full Vat Gas Valve
2	806-3940SP	Harness, Dual Vat Gas Valve
3	806-9678SP	Plug Assembly, CE Gas Valve

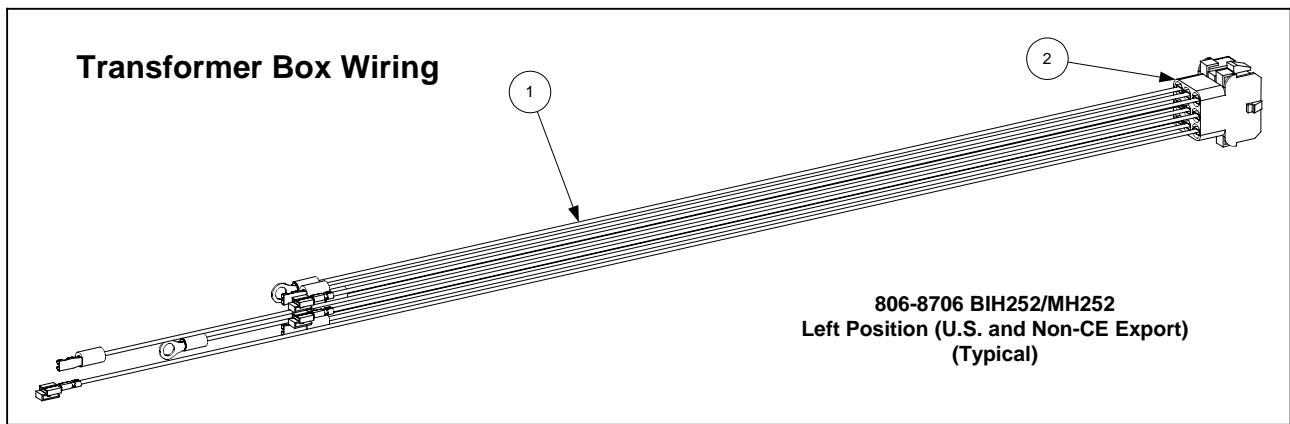


ITEM	PART #	COMPONENT
	807-1978	U.S. and Non-CE Export MH/BIH52 Main Wiring Harness
	807-2168	CE MH/BIH52 Main Wiring Harness



ITEM	PART #	COMPONENT
1	806-9786	3-Wire without Plug, 450V (Non-CE Export)
2	806-5332SP	3-Wire with 3-Prong Molded Plug, (U.S., CE, and Non-CE Export)
3	806-6083	5-Wire with 4-Prong Twist-Lock Plug, 120V (U.S. and Non-CE Export)
	807-1558	5-Wire, 4 pole plug 20A only
4	807-1871	3-Wire with 3-Prong Twist-Lock Plug, 125V (Mexico and South America)
5	806-9285	3-Wire with 3-Prong Twist-Lock Plug, 250V (Far East and Pacific Rim)
6	807-1696	3-Wire with 3-Pin Sleeved Plug, 230V (CE)
*	807-1560	Strain Relief

* Not illustrated.



ITEM	PART #	COMPONENT
1		Plug and Wire Assembly, Transformer Box 9-Pin Female
	806-6077	MH152 (U.S. and Non-CE Export)
	806-6597	MH152 (CE)
	806-8706SP	BIH252/MH252, Left Position (U.S. and Non-CE Export)
	806-8707SP	BIH252/MH252, Right Position (U.S. and Non-CE Export)
	806-8719	BIH252/MH252, Right Position (CE)
	806-8720	BIH252/MH252, Left Position (CE)
	806-8708SP ¹	BIH352/MH352, Left Front Position (U.S. and Non-CE Export)
	806-8709SP ²	BIH352/MH352, Left Rear Position (U.S. and Non-CE Export)
	806-8710SP ³	BIH352/MH352, Right Position (U.S. and Non-CE Export)
	806-8718 ⁴	BIH352/MH352, Right Position (CE)
	806-8721 ⁵	BIH352/MH352, Left Front Position (CE)
	806-8722 ⁶	BIH352/MH352, Left Rear Position (CE)
	806-8723SP	BIH452/MH452, Right Front Position (CE)
		Internal Wiring Bundles
2	807-0156	9-pin connector
*	WIR0288	100-240V BIH152 (U.S., CE, and Non-CE Export)
*	WIR0109	100-240V MH152 (U.S. and Non-CE Export)
*	WIR0100SP ⁷	100-240V BIH252/MH252 (U.S. and Non-CE Export)
*	WIR0101SP ⁸	100-240V BIH352/MH352 (U.S. and Non-CE Export)
*	WIR0102SP	100-240V BIH452/MH452 (U.S. and Non-CE Export)
*	WIR0144	230V MH152 (CE)
*	WIR0141 ⁹	230V BIH252/MH252 (CE)
*	WIR0142 ¹⁰	230V BIH352/MH352 (CE)
*	WIR0143	230V BIH452/MH452 (CE)

* Not illustrated.

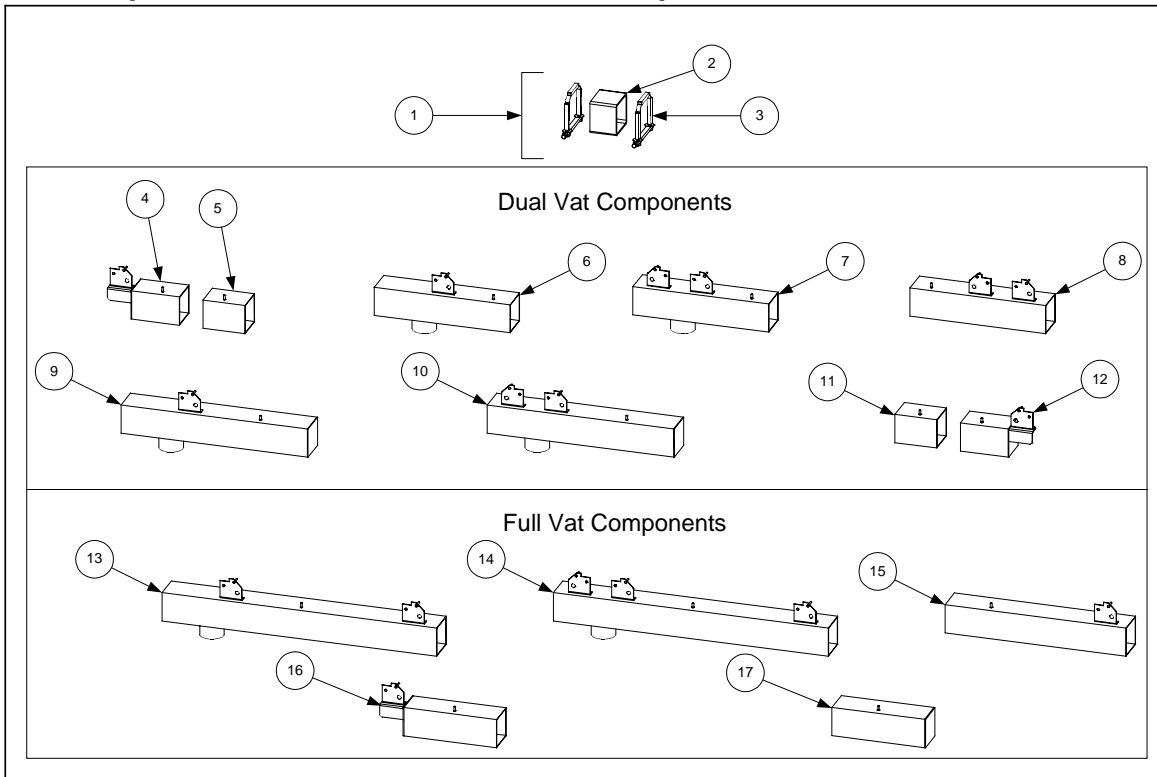
NOTES:

1. Also used in Left Front Position of BIH452/MH452 (U.S. and Non-CE Export)
2. Also used in Left Rear Position of BIH452/MH452 (U.S. and Non-CE Export)
3. Also used in Right Rear Position of BIH452/MH452 (U.S. and Non-CE Export)
4. Also used in Right Rear Position of BIH452/MH452 (CE)
5. Also used in Left Front Position of BIH452/MH452 (CE)
6. Also used in Left Rear Position of BIH452/MH452 (CE)
7. Also used in BIH552 (U.S. and Non-CE Export)
8. Also used in BIH552 (U.S. and Non-CE Export)
9. Also used in BIH552 (CE)
10. Also used in BIH552 (CE)

4.5 Oil Handling System Components

4.5.1 Drain System Components

4.5.1.1 Square Drain Sections and Seal Components

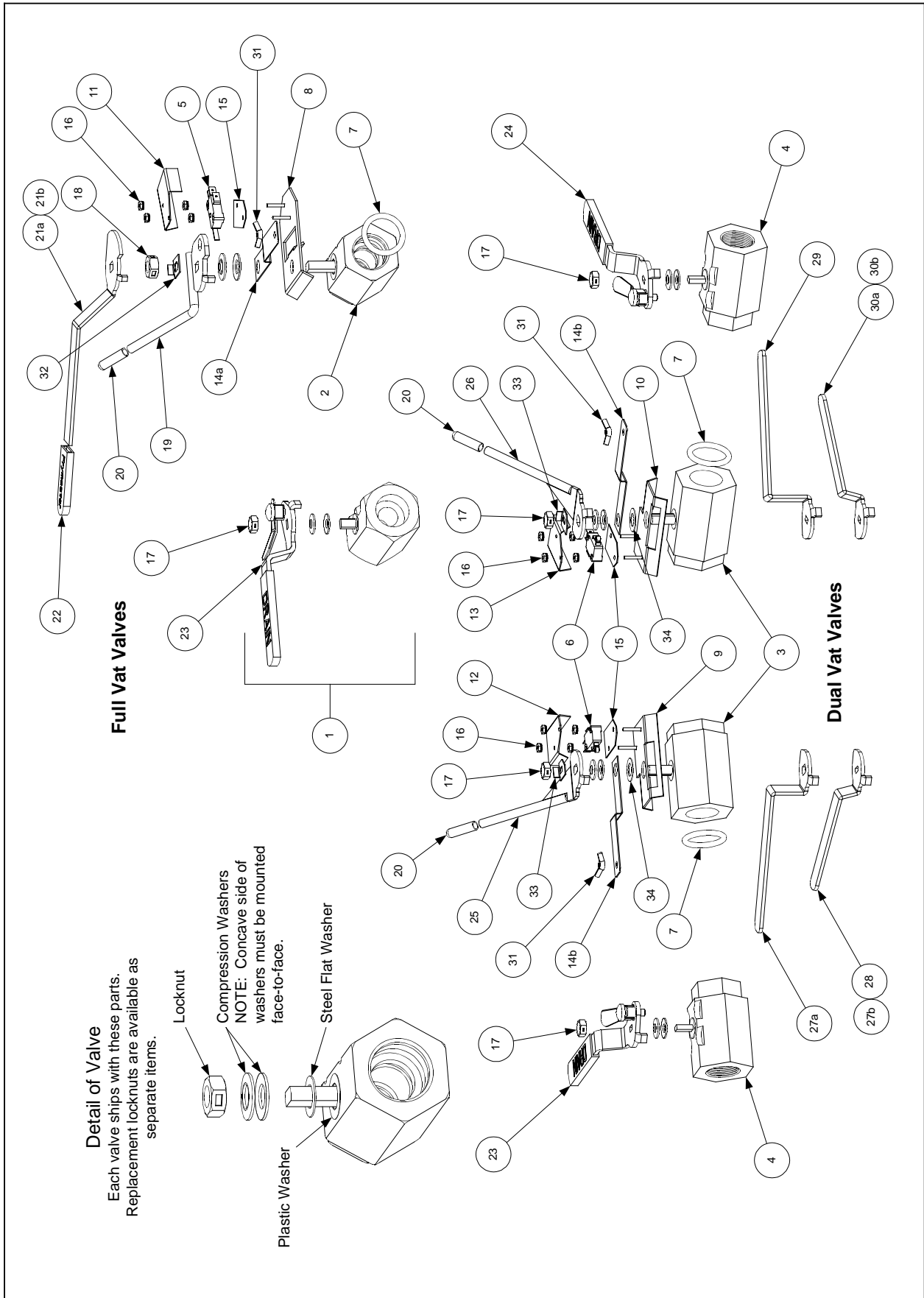


ITEM	PART #	COMPONENT
1	KIT-0257SP	Clamp Assembly and Seal Kit
2	816-0420	Seal (Rubber Boot)
3	806-6374SP	Clamp Assembly
4	823-2199	Dual Vat Left End Outer Section (4.12-inches/10.5 cm)
5	823-2212	Dual Vat Left End Inner Section (3.57-inches/9.1 cm)
6	823-2204	Dual Vat Outlet Section with 1 Bracket (11.55-inches/29.3 cm)
7	823-2192	Dual Vat Outlet Section with 2 Brackets (11.55-inches/29.3 cm)
8	823-2202	Dual Vat Drain Section with 2 Brackets (11.55-inches/29.3 cm)
9	823-2211	Dual Vat Closed Outlet Section with 1 Bracket (15.86-inches/40.3 cm)
10	823-2210	Dual Vat Closed Outlet Section with 2 Brackets (15.86-inches/40.3 cm)
11	823-2212	Dual Vat Right End Inner Section (3.57-inches/9.1 cm)
12	823-2194	Dual Vat Right End Outer Section (4.12-inches/10.5 cm)
13	823-2200	Full Vat Outlet Section with 2 Brackets (23.38-inches/59.4 cm)
14	823-2207	Full Vat Outlet Section with 3 Brackets (23.38-inches/59.4 cm)
15	823-2233	Full Vat Drain Section with 1 Bracket (15.39-inches/39.1 cm)
16	823-2197	Full Vat Left End Section (7.95-inches/20.2 cm)
17	823-2198	Full Vat Right End Section (7.95-inches/20.2 cm)
*	811-0932	Vent Tube, Teflon 3/8" OD Bulk
*	813-0408	¼ Pipe Plug, Used when vent tube is not used.
*	816-0123	Cap-Square Drain (KIT0256 End Cap Kit)
*	810-1372	Elbow, 90° Vent Tube (used with Items 4 and 16)

* Not illustrated.

NOTE: Item 5 is always used left of outlet section; Item 11 is always used right of outlet section.

4.5.1.2 Drain Valve Assemblies and Associated Components



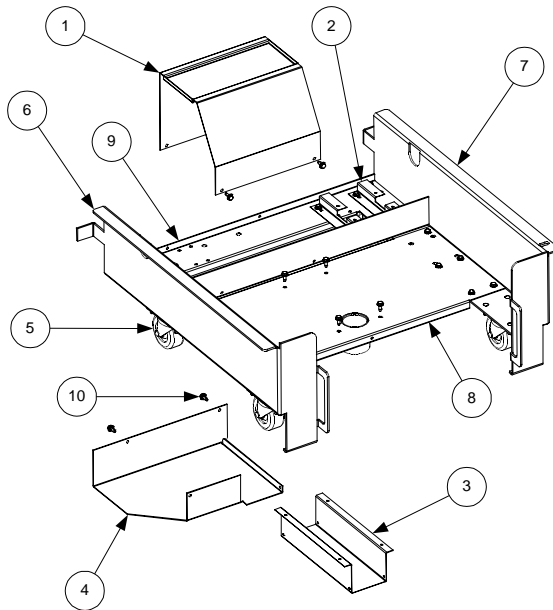
ITEM	PART #	COMPONENT
1	810-1569	Valve, Full Vat 1.25-inch Drain (for use on MH52 units. See NOTE .)
	806-7916	Valve, 1-inch Drain w/ lock Right
	806-7915	Valve, 1-inch Drain w/ lock Left
2	810-1018	Valve, Full Vat 1.25-inch Drain (for use on BIH52 units)
	806-6373SP	Valve Assembly 1.25-inch Drain
3	810-1114	Valve, Dual Vat 1-inch Drain (for use on BIH52 units)
	806-6608SP	Valve, Drain Assembly Right DV 1.25-inch
	806-6609SP	Valve, Drain Assembly Left DV 1.25-inch
	806-6400SP	Valve, Drain Assembly Left DV 1-inch
	806-6401SP	Valve, Drain Assembly Right DV 1-inch
4	810-1338	Valve, Dual Vat 1-inch Drain (for use on MH52 units)
5	807-2103	Switch, Drain Safety (for use on Full Vat BIH52 units)
6	807-2104	Switch, Drain Safety (for use on Dual Vat BIH52 units)
7	816-0135	O-Ring (for use with Items 2 and 3)
8	806-8137	Bracket, Full Vat Drain Safety Switch
9	806-8194	Bracket, Left Dual Vat Drain Safety Switch
	106-2671	Bracket, Left Dual Vat Drain Safety Switch
10	806-8195	Bracket, Right Dual Vat Drain Safety Switch
	106-2672	Bracket, Right Dual Vat Drain Safety Switch
11	900-2841	Cover, Full Vat Drain Safety Switch
12	901-2348	Cover, Left Dual Vat Drain Safety Switch
13	902-2348	Cover, Right Dual Vat Drain Safety Switch
14a	900-2354	Bracket, Full Vat Drain Valve
14b	900-2355	Bracket, Dual Vat Drain Valve
15	816-0220	Insulation, Drain Safety Switch
16	826-1366	Nut, 4-40 Keps Hex (Pkg. of 25)
17	809-0539	Nut, 3/8-inch 2-Way Lock
18	809-0540	Nut, 1/2-inch 2-Way Lock
19	900-2609	Handle, FV Drain
	210-8967	Handle, FV Drain SS
	823-2371	Handle, Non-CE Full Vat
20	810-0677	Grip, Handle Round
21a	900-2521	Handle, CE Full Vat BIH52 Drain Valve
21b	210-9179	Handle, Full Vat BIH52 Drain Valve
22	814-0047	Sleeve, Handle Flat
23	810-1568	Handle with Lock, Drain Valve (for Full or Left Dual Vat MH52 Valve)
24	810-1567	Handle with Lock, Drain Valve (for Right Dual Vat MH52 Valve)
25	201-3916	Handle, Non-CE Dual Vat BIH52 Left Drain Valve
	823-3901	Handle, Non-CE Dual Vat BIH52 Left Drain Valve non-McD's
26	200-4304	Handle, Non-CE Dual Vat BIH52 Right Drain Valve
	823-3902	Handle, Non-CE Dual Vat BIH52 Right Drain Valve non-McD's
27a	900-2509	Handle, CE Dual Vat BIH52 Left Drain Valve
27b	210-9922	Handle, Dual Vat BIH52 Left Drain Valve
28	901-5713	Handle, CE Dual Vat BIH152 Left Drain Valve
29	900-2503	Handle, CE Dual Vat BIH52 Right Drain Valve
30a	902-5713	Handle, CE Dual Vat BIH152 Right Drain Valve
30b	210-9925	Handle, Dual Vat BIH52 Right Drain Valve
31	826-1382	Wingnut (Pkg. of 10)
32	900-2936	Retainer, Drain Valve 1/2-inch Nut FV
33	900-2934	Retainer, Drain Valve 3/8-inch Nut DV
34	810-1165	Washer, Teflon DV
*	809-0196	Washer, Felt DV
*	826-1896	Bracket Kit for Dual Vat Drain Valves Left
*	826-1897	Bracket Kit for Dual Vat Drain Valves Right

* Not Illustrated

NOTE: Item 1 includes Handle, 810-1568 (Item 23).

4.5.2 Filtration System Components

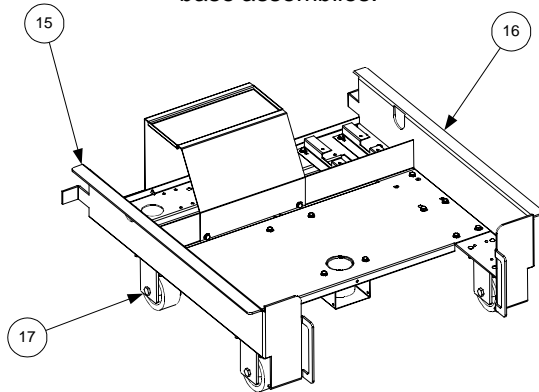
4.5.2.1 Filter Base Assemblies



Base Assembly 106-0043SP
(Replaces Base Assembly 806-5985 used on units built prior to August 1997)

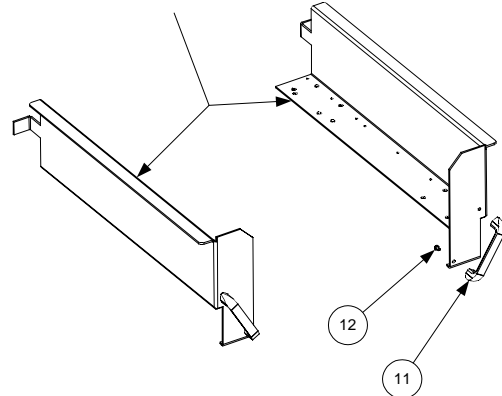
NOTE: Items 1, 2, 3, and 4 are shown assembled to base assemblies for illustrative purposes. However, **Base Assemblies 106-0043SP, 806-8804, and 806-8848SP do not include Items 1, 2, 3, and 4.** These items must be ordered separately.

Items 8 and 9 are used on all three base assemblies.

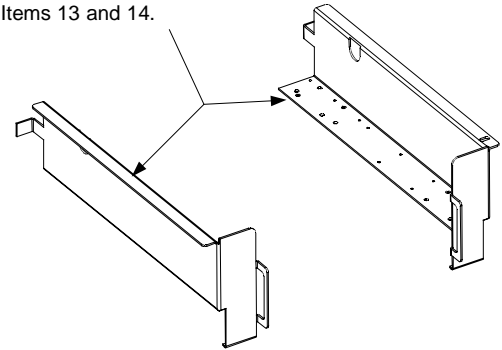


Base Assembly 806-8804
(Used on Japanese/Far East Units)

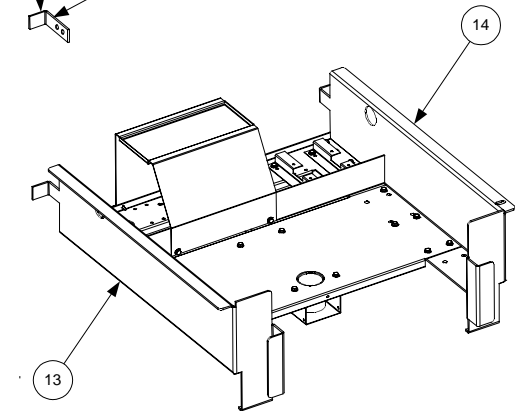
NOTE: These types of base sides are no longer available. They must be replaced with Items 13 and 14. Handles and screws used with these base sides remain available.



NOTE: These types of base sides are no longer available. They must be replaced with Items 13 and 14.



18 Lock bracket used on units built before August 1997.



Base Assembly 806-8648SP
(Used on units built August 1997 and later.)

NOTE: In September 1999, significant changes were made to the design of the filter base assemblies used in BIH52 fryers. The most visible change was the removal of the casters on all assemblies except 806-8804 (which is used in units manufactured for sale primarily in Japan). The motor cover was also redesigned and a lower plumbing shield was added. Additionally, the two-piece motor support (P/Ns 900-7469 and 900-7470) was replaced with a single, stronger support.

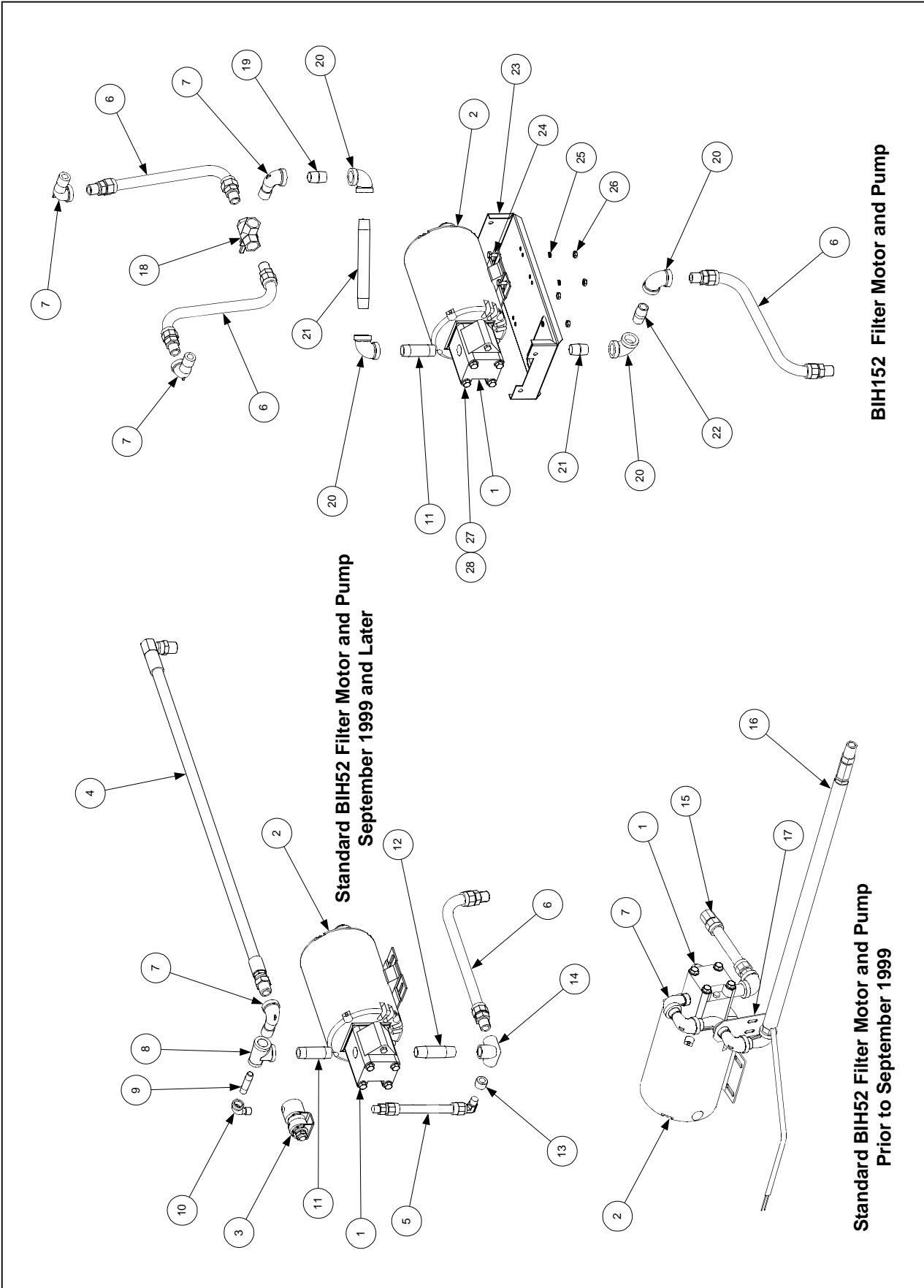
In order to provide continued support for units built prior to August 1999, a new filter base assembly with casters (P/N 106-0043SP) was created to replace the original 806-5895 filter base assembly, which is no longer available.

Two additional modifications to the design of the base sides have been made since August 1999. These include the replacement of the die-cast metal handles with handles formed into the sides, and the replacement of the separate lock brackets with brackets that are also formed into the sides.

ITEM	PART #	COMPONENT
1	900-5477	Cover, Motor (September 1999 and later) (used with all three assemblies)
*	824-0558	Cover, Motor (Prior to September 1999)
2	900-1949	Standoff, Filter Wiring Box (used with all three assemblies)
3	900-7557	Cover, Suction Tube (used with all three assemblies)
4	900-9634	Shield, Filter Plumbing (used with all three assemblies)
5	810-0949	Caster, 2.5-inch Swivel (also used in original 806-5985 assembly)
6	806-9153	Side, Left Filter Base (used in 106-0043SP)
7	806-9150	Side, Right Filter Base (used in 106-0043SP)
8	823-2289	Support, Filter Pan (used in all three filter base assemblies)
9	900-5396	Support, Filter Motor (used in all three filter base assemblies)
10	826-1374	Screw, #10 x ½-inch Washer Hex Head (Pkg of 25)
11	810-0180	Handle, Plated Die-cast Metal
12	826-1360	Screw, 10-24 x 5/16-inch Round Slotted Head (Pkg of 25)
13	201-3770	Side, Left Filter Base (used in 806-8648SP)
14	202-3770	Side, Right Filter Base (used in 806-8648SP)
15	806-9154	Side, Left Filter Base (used in 806-8804SP)
16	806-9151	Side, Right Filter Base (used in 806-8804SP)
17	810-1211	Caster, BIH52 Rigid (used in 806-8804SP only)
18	900-1953	Bracket, Filter Lock (used on base assemblies prior to September 1999)
*	809-0440	Nut, 5/16-inch Keps Hex (used for securing casters to base assemblies)
*	826-1677	Pin Extension Kit

* Not illustrated.

4.5.2.2 Filter Motor and Pump Plumbing

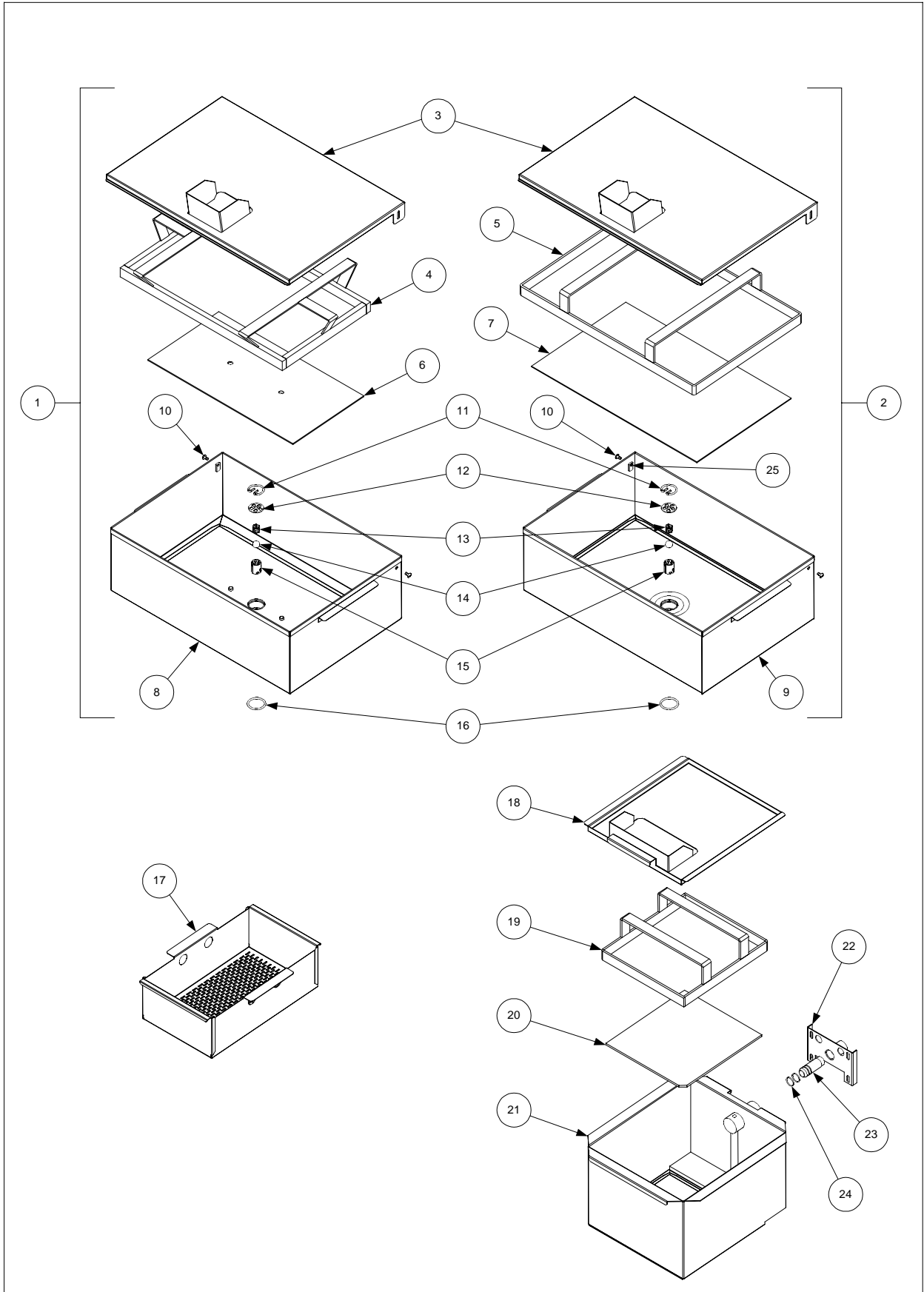


ITEM	PART #	COMPONENT
1	826-1264	Pump, 4 GPM (15 LPM) (comes with Gasket 816-0093)
2		Motor and Gasket Kit, Multi-Voltage
	826-1712	100-120VAC (replaces earlier kits 826-1260, -1263, and -1268)
	826-1713	200-250VAC (replaces earlier kits 826-1262, -1266, -1269, and -1270)
3	807-2484	Valve, Solenoid Vent
4	810-1404	Flexline, Oil Return (pump to rear manifold)
5	810-1373	Flexline, Pump Bypass
6	806-9437SP	Flexline, 15½-inch (39.5cm) Oil Return (See NOTE below)
7	813-0165	Elbow, ½-inch x 90° Street
8	813-0530	Tee, ½-inch x ¼-inch x ½-inch Reducing
9	813-0537	Nipple, ¼-inch x 2-inch
10	813-0543	Elbow, ¼-inch x 90° Street
11	813-0265	Nipple, ½-inch x 2½-inch
12	813-0460	Nipple, ½-inch x 3-inch
13	813-0304	Bushing, ½-inch to ¼-inch Reducing
14	813-0331	Elbow, ½-inch 3-way
15	810-1159	Flexline, 5-inch Oil Return
16		Hose, Heated Oil Return
	810-0945	100-120VAC
	810-1037	208-250VAC
17	900-1958	Support, Oil Return
18	810-1003	Valve, 180° 3-way Ball
19	813-0022	Nipple, ½-inch x Close
20	813-0062	Elbow, ½-inch x 90°
21	813-0098	Nipple, ½-inch x 6½-inch
22	813-0087	Nipple, ½-inch x 1½-inch
23	900-5543	Mount, Motor
24	826-1389	Screw, ¼-20 x ¾-inch Hex Head (Pkg. of 10)
25	809-0191	Washer, ¼-inch Lock
26	826-1362	Nut, ¼-20 Hex (Pkg. of 10)
27	809-0514	Capscrew 5/16"x 18 NC
28	809-0194	Washer, Flat 5/16 ZP
*	806-6728SP	Wiring Assembly, Pump Motor to Filter Box
*	816-0093	Gasket, Pump Motor
*		Thermal Switch
	807-1600	Baldor Motor, 120VAC
	807-1601	Baldor Motor, 240VAC
	807-1598	Magnatek Motor, 120VAC
	807-1599	Magnatek Motor, 240VAC
*	807-1420	Heater Tape 120V 25w 36" (Assy. 806-9245SP)
*	807-1472	Heater Tape 120V 40w 56" (Assy. 806-8004SP)
*	807-2304	Heater Tape 120V 100w 72" (Assy. 806-7755SP)
*	811-0746	Aluminum Tape – 50 yard roll
*	811-0861	Foam Insulation – by the foot

* Not illustrated.

NOTE: Item 6 consists of 13-inch Flexline 810-1057 and two ⅜-inch to ½-inch Male Adapters 810-1668, which may be ordered as separate items.

4.5.2.3 Filter Pan Assemblies and Associated Components

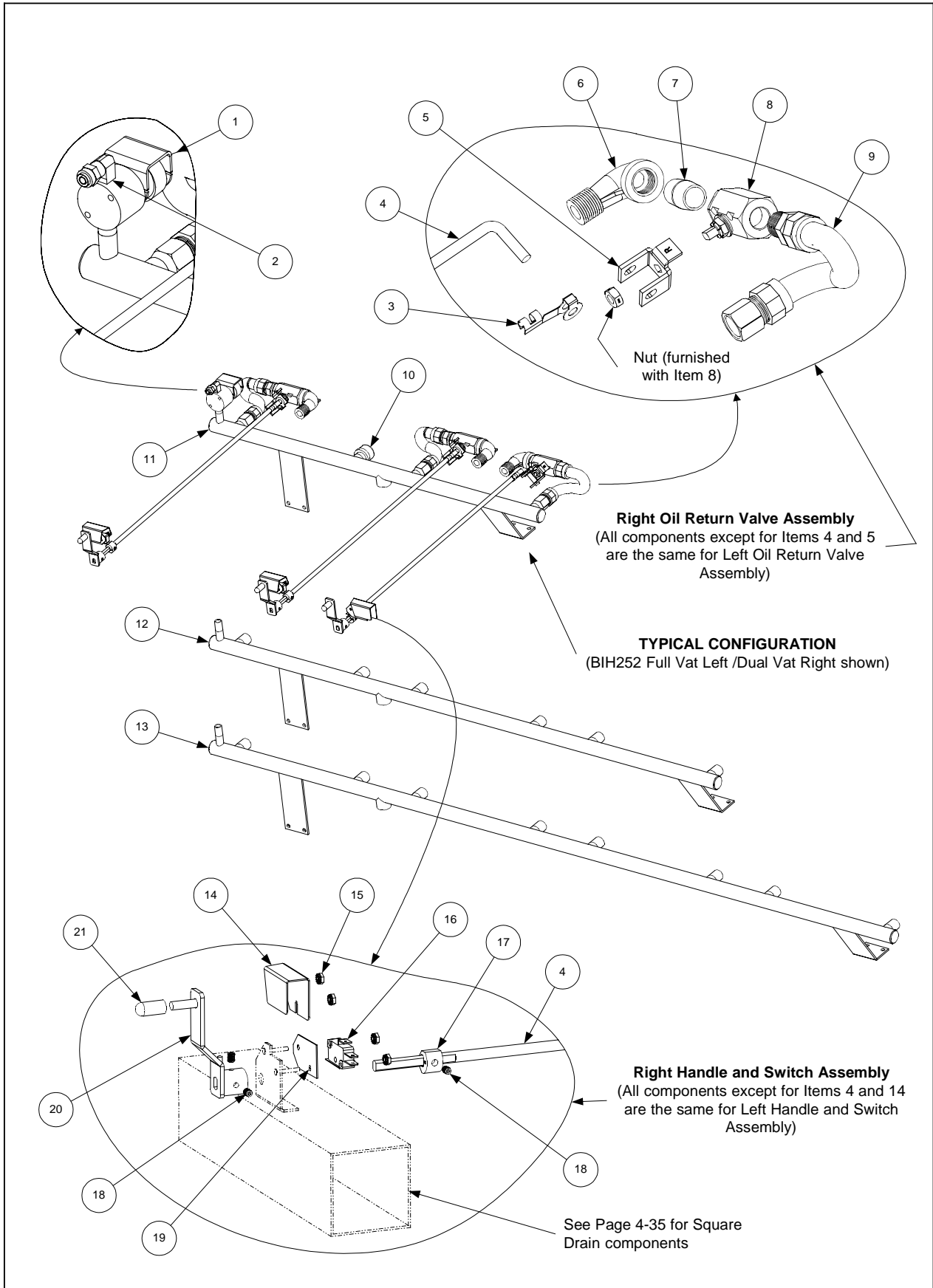


ITEM	PART #	COMPONENT
1		Pan Assembly, Filter (has screen alignment pins in pan bottom)
	806-6423SP	Standard
	806-7377SP	For use on Japanese/Far East (JBIH52) units.
2†	806-5618SP	Pan Assembly, Filter (has no screen alignment pins in pan bottom) (Paper pans used in Japan)
3		Cover, Filter Pan
	823-2027	For use with 806-6423SP and 806-5618SP assemblies.
	823-2321	For use with 806-7377SP units (has lower splash guard than 823-2027)
4	810-1405	Ring, Hold Down (for use with 806-6423SP and 806-7377SP assemblies)
5	810-1408	Ring, Hold Down (for use with 806-5618SP assembly)
6	900-8818	Screen, Sana Grid (9 x 17-inch/23 x 43cm, has alignment holes)
7	900-8819	Screen, Sana Grid (12 x 19.5-inch/30.5 x 49.5cm, has no holes)
8	823-2234SP	Pan, Filter (has screen alignment pins in pan bottom)
9†	823-1979SP	Pan, Filter (has no screen alignment pins in pan bottom)
10	809-0422	Screw, 10-32 x 7/16-inch Slotted Truss Head
	826-1490	Kit, Filter Pan Check Valve Service (consists of Items 11 through 16)
11	810-1387	Retainer, Check Valve
12	900-5448	Strainer, Check Valve
13	810-0946	Spring, Check Valve
14	810-0948	Ball, Check Valve
15	810-1388	Tube, Check Valve
16	816-0597	O-Ring, Check Valve
17	824-0430	Screen, Crumb (used with 806-5618SP, 806-6423SP, and 806-7377SP)
18	823-2586	Cover, Filter Pan (for use with 823-2575SP)
19	823-2574	Ring, Hold Down (for use in 823-2575SP)
20	900-8829	Screen, San Grid (10 x 9-inch/23 x 25cm, for use in 823-2575SP) Baby FP
21	823-2575SP	Pan, Filter (for use in BIH152 units)
22	823-2578	Bracket, BIH152 Oil Return
23	810-0697	Disconnect, Male
24	826-1392	O-Ring, BIH152 Oil Return (Pkg of 5)
25	809-0028	Nut, Wld 10-32 Sngl Wng
*	806-8550SP	Inner Pan w/ ck valve and O-rings

† Used on some early-production Japanese/Far East (JBIH52) units only.

* Not illustrated.

4.5.2.4 Rear Flush Oil Return Components



ITEM	PART #	COMPONENT
1	807-2484	Valve, Solenoid Vent (145 ohms)
2	810-1372	Elbow, 90° x ¼-inch NPT x ⅜-inch Tube
*	811-0932	Vent Tube 3/8" OD Bulk Teflon
3	809-0601	Clip, Rod End Clevis
4		Shaft, Rear Flush Valve
	810-1767	For use in left oil return valve assemblies (see illustration below). <i>FV</i>
	810-1766	For use in right oil return valve assemblies (see illustration below).
5		Handle, Rear Flush Valve
	901-2772	For use in left oil return valve assemblies. <i>FV use left only</i>
	902-2772	For use in right oil return valve assemblies.
*	900-2935	Nut, Oil Return Valve Retainer
6	813-0165	Elbow, 90° x ½-inch Street
7	813-0022	Nipple, ½-inch Close
8	810-0278	Valve, ½-inch Ball
9	806-9828SP	Flexline Assembly, 9-inch Oil Return
10	813-0469	Cap, ½-inch Pipe
11	810-1360	Manifold, BIH252 Rear Flush Oil Return
12	810-1357	Manifold, BIH352 Rear Flush Oil Return
13	810-1378	Manifold, BIH452 Rear Flush Oil Return
14		Cover, BIH52 Rear Flush Oil Return Microswitch
	901-2214	For use in left handle and switch assemblies.
	902-2214	For use in right handle and switch assemblies.
15	826-1366	Nut, 4-40 Keps Hex (Pkg. of 25)
16	807-2103	Microswitch
17	810-1186	Cam, Filter System Microswitch
18	826-1377	Setscrew, 10-32 x ¼-inch (Pkg. of 25)
19	816-0220	Insulation, Microswitch
20		Handle, Rear Flush
	823-2295	For use in Non-CE applications (see illustration below).
	823-2259	For use in CE applications only (see illustration below).
21	812-1253SP	Cover, Rear Flush Handle

NOTE: *Left* and *right* refer to the fryer as viewed from the front when facing the fryer.

