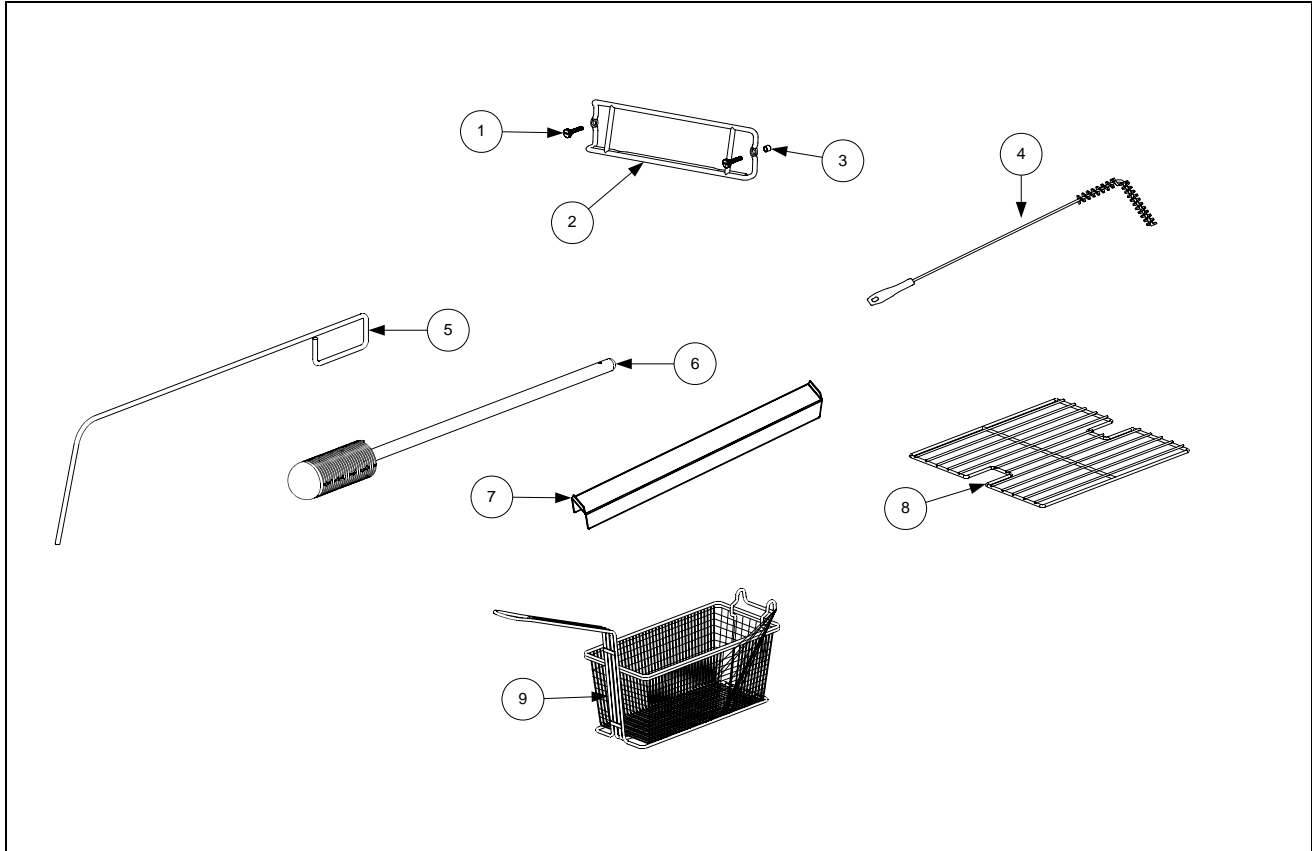


PRO SERIES MARINE ELECTRIC FRYERS

CHAPTER 8: PARTS LIST

8.1 Accessories

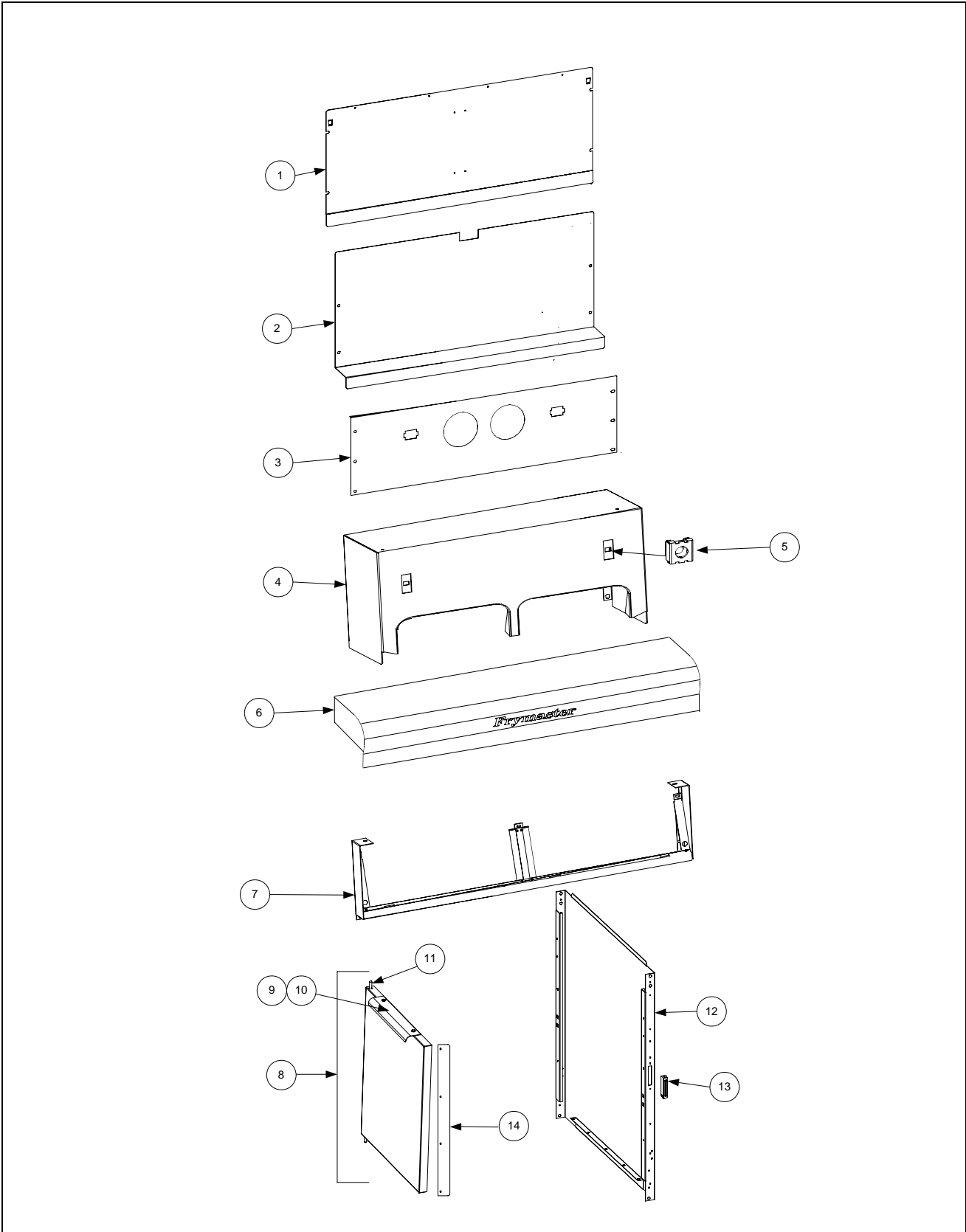


ITEM	PART #	COMPONENT
1	809-0989	Thumbscrew, 1/4 -20 X 1-inch
2	810-2793	Hanger, Wireform Basket
3	809-0921	Spacer, Basket Hanger
4	803-0278	L-Shaped Brush
5	803-0197	Cleanout Rod, 27-inch
6	803-0209	Brush, Frypot
7	210-9083	Connecting Strip, Frypot
8	803-0132	Rack, Full-Vat Basket Support
9	803-0271	Basket, Twin
*	803-0352	5/16" Nut Driver
*	803-0002	Powder, Filter (80 1-Cup Applications)
*	803-0170	Paper, Filter (100-Sheet Pack)

* Not illustrated.

8.2 Cabinetry

8.2.1 FPPH217 Backs, Panels, Doors, Handles, Sides, Tilt Housings & Top Caps



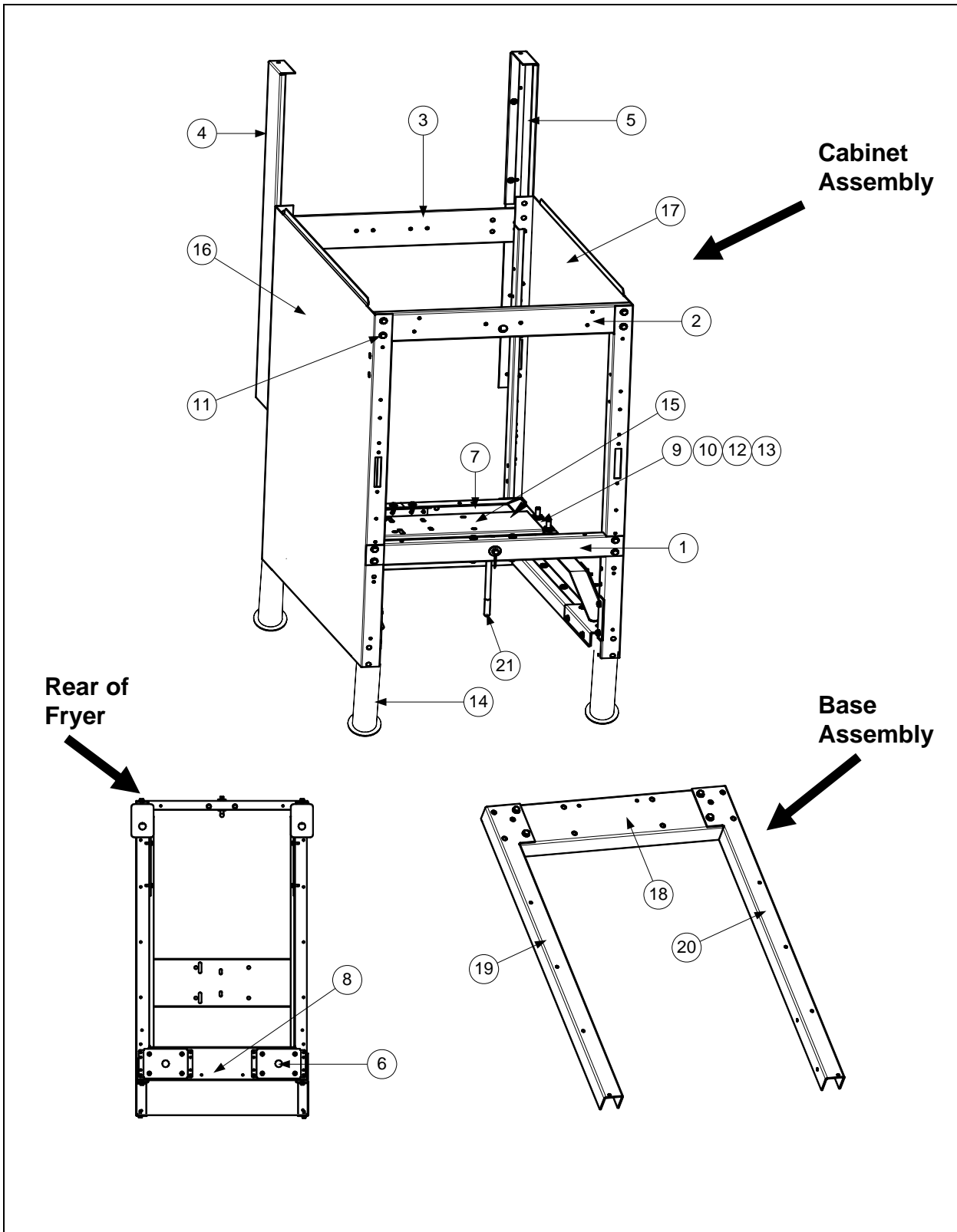
8.2.1 FPPH217 Backs, Panels, Doors, Handles, Sides, Tilt Housings & Top Caps

ITEM	PART #	COMPONENT
1	210-9157	Back Panel, Upper Single FPH117
	210-9032	Back Panel, Upper 2-Station FPPH217
2	210-9158	Back Panel, Center Single FPH117
	210-9028	Back Panel, Center 2-Station FPPH217
3	210-9030	Back Panel, Lower 2-Station FPPH217
	106-4953	Tilt Housing Assembly, Single FPH117 includes transformer, bracket & hardware.
4	824-1513	Tilt Housing, Single FPH117
	824-1496	Tilt Housing, 2-Station FPPH217
5	826-1351	Nut Retainer, ¼-20 (Pkg. of 10)
6	106-5195	Top Cap, Single FPH117
	106-5196	Top Cap, 2-Station FPPH217
*	200-9614	Heat Shield, Single FPH117
*	200-9610	Heat Shield, 2-Station FPPH217
7	106-5016	Frame, Control Panel, Single FPH117
	106-5221	Frame, Control Panel, 2-Station FPPH217
8	106-4979	Door Assembly Single FPH117 (includes items below plus 210-9214)
*	824-1516	Door, Universal Single FPH117
*	210-9215	Liner, Door Universal Single FPH117
*	809-0500	Screw, #10 – ½ Hex TR HD SS
*	826-1343	Spring, Door Pin Hinge Single FPH117 and FPPH217 (Pkg. of 10)
	106-4769	Door, Left or Right (Left shown – move handle to opposite side for Right) 2-Station FPPH217
9	809-0500	Screw, #10 X ½-inch Hex Head FPPH217
10	210-9214	Handle, Door
11	106-0554	Pin Assembly, Door FPH117, FPPH217
12	211-9130	Side, Cabinet Left, Single FPH117
	211-8466	Side, Cabinet Left, 2-Station FPPH217
	212-9130	Side, Cabinet Right, Single FPH117
	212-8466	Side, Cabinet Right, 2-Station FPPH217
13	810-1105	Magnet, Door
14	210-9086	Door Tab
*	210-9154	Bracket, Transformer, Single FPH117
*	810-0045	Bushing, Transformer Bracket Single FPH117
*	809-0123	Screw, #10 –3/4 Truss Slotted Head
*	826-1376	Nut KEPS 10-32 HX ZP (Pkg. of 10)
*	210-9188	Hinge, Door Single FPH117
*	807-0064	Transformer, 480V/120V 150VA Single FPH117

* Not illustrated.

8.2.2 Cabinet Bases, Braces, and Associated Parts

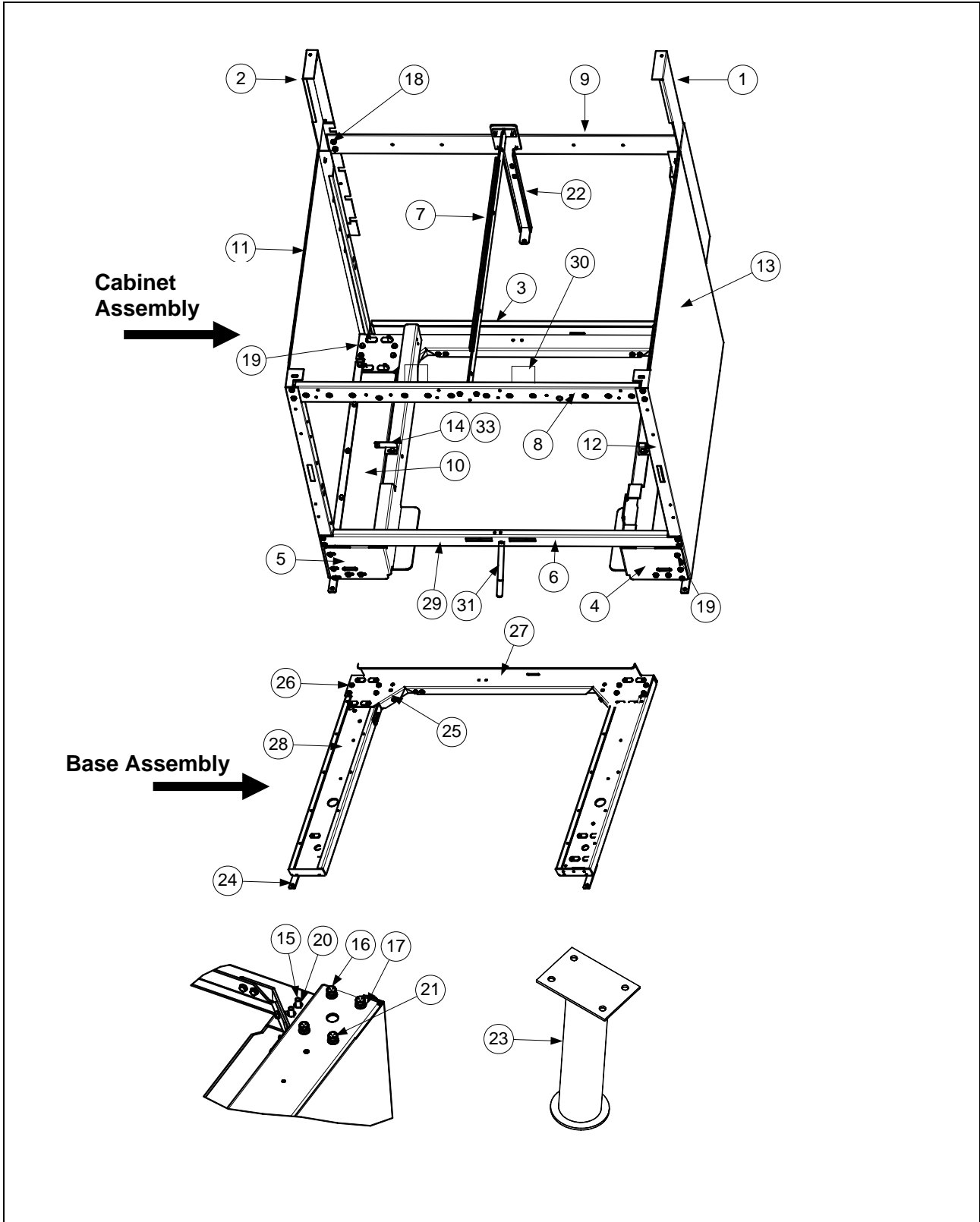
8.2.2.1 FPH117 Single



8.2.2.1 FPH117 Single

ITEM	PART #	COMPONENT
	106-4942	Assembly, Cabinet Single FPH 117
1	106-4949	Brace Assembly, Filter Stop
2	210-9141	Rail, Front Top Single
3	210-9140	Brace, Rear Horizontal Single
4	106-4947	Upright, Rear Enclosure Left
5	106-4946	Upright, Rear Enclosure Right
6	106-4950	Leg Pad Assembly
7	106-4951	Filter Rail Assembly
8	106-4952	Base Assembly
9	826-1362	Nut, ¼-20 Hex (Pkg. of 10)
10	809-0191	Washer, ¼ Lock Spring ZP
11	809-0500	Screw, #10 - ½ Hex Head SS
12	809-0417	Nut, Flange ¼ - 20 Serr
13	809-0508	Bolt, 14 – 20 x 1 ¼ AT HX HD SS
14	823-3103	Leg W/A Single FP
15	210-9150	Mount, Motor Single FP
16	211-9130	Cabinet, Side Panel Left
17	212-9130	Cabinet, Side Panel Right
18	210-9148	Channel, Rear Single
19	211-9149	Channel, Side Left
20	212-9149	Channel, Side Right
21	823-5313	Filter Pan Stop

8.2.2.2 FPPH217 Double Station Fryer

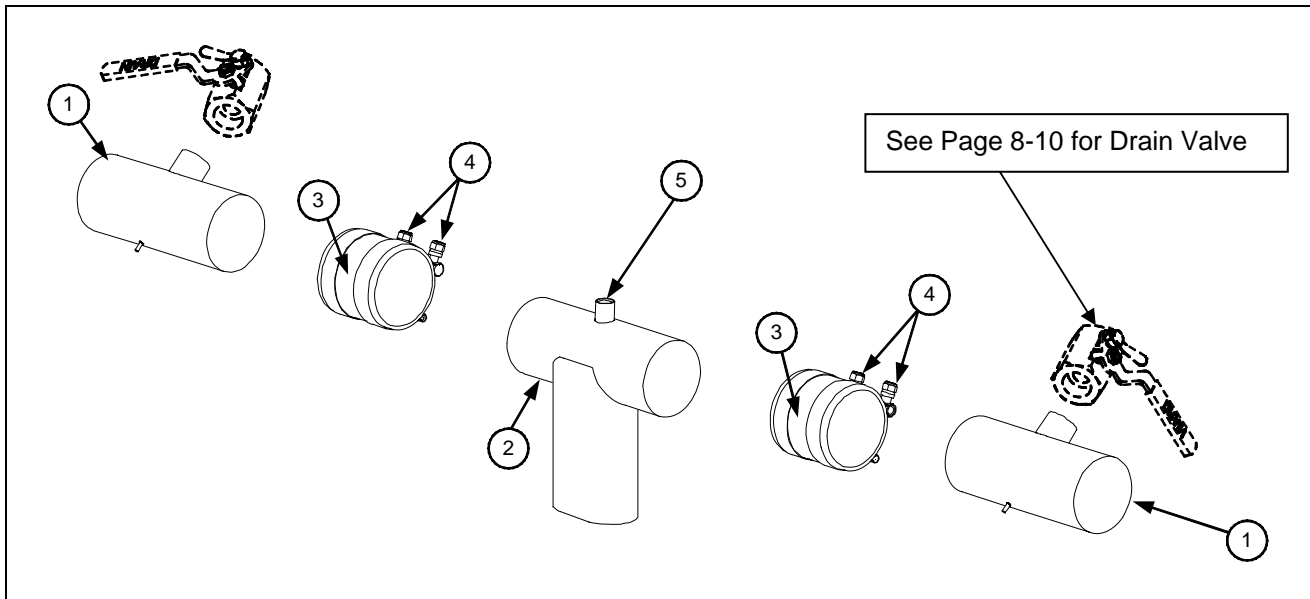


8.2.2.2 FPPH217 Double Station Fryer

ITEM	PART #	COMPONENT
	106-4919	Cabinet Assembly, FPP Electric Double S/S
1	106-4766	Upright Assembly, Right
2	106-4765	Upright Assembly, Left
3	106-4767	Base Assembly, FPP DBL Electric
4	210-8978	Support, Right Filter Pan
5	210-8979	Support, Left Filter Pan
6	210-8984	Support, Cross Cabinet
7	210-8986	Divider, Cabinet
8	210-8987	Brace, Front Horizontal Two-Station Fryer
9	210-8989	Brace, Rear Horizontal Two-Station Fryer
10	210-9116	Shield, Channel
11	211-8466	Side, Left Cabinet
12	211-8977	Support, Contactor Box Station 1
13	212-8466	Side, Right Cabinet
14	212-8977	Support, Contactor Box Station 2
15	826-1389	Screw, Hex Head ¼ -20x ¾ (Pkg. of 10)
16	809-0190	Washer, Flat ¼ SS
17	809-0191	Washer, ¼ Lock Spring
18	826-1376	Nut, 10-32 Keys Hex (Pkg. of 10)
19	826-1374	Screw, #10x ½-inch Hex Washer Head (Pkg. of 25)
20	809-0417	Nut, ¼ -20 Hex Flange
21	809-0429	Bolt, ¼-20 x 2-inch Hex Head
22	824-1488	Bracket, Rear Support
23	823-5241	Leg, Marine Shipboard (Mounts with Items 20 and 21)
24	210-6862	Hinge, Door
25	210-8993	Brace, Rear Channel Corner
26	826-1374	Screw, #10 X ½-inch Hex Washer Head (Pkg. of 25)
27	823-5105	Channel, Base Rear FPP Two-Station Fryer
28	823-5106	Channel, Base Side
29	810-2346	Magnet, Door
30	210-9023	Bracket, Frypot
31	823-5313	Filter Pan Stop

8.3 Drain System Components

8.3.1 FPPH217 Euro-Look Drain Tube Sections and Associated Parts

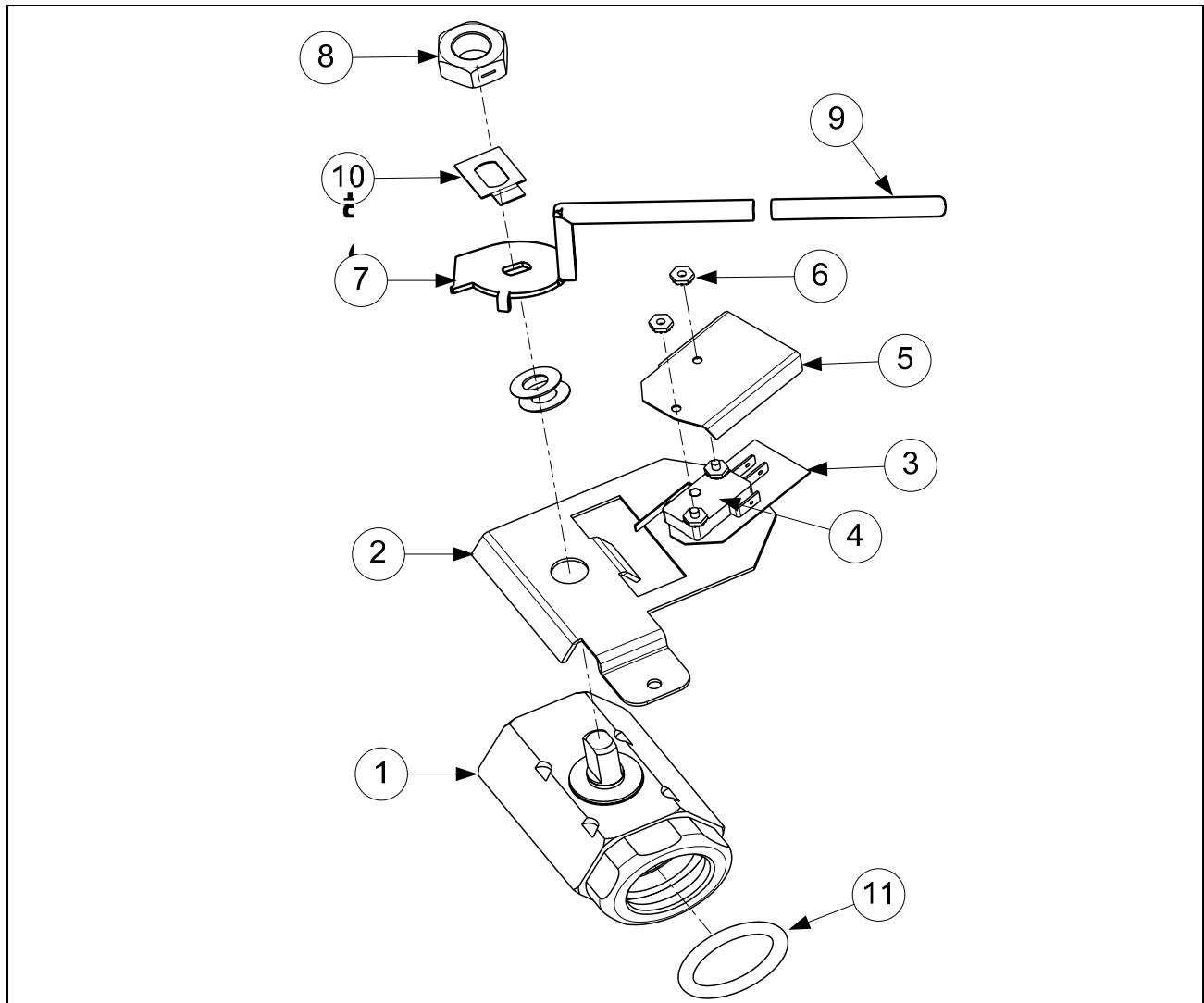


ITEM	EURO-LOOK PART #	COMPONENT
1		Drain Tube, Left/Right End Short
	823-5048	Full-Vat
2	823-5049	Drain Outlet
3	816-0625	Sleeve
4	809-0969	Clamp
5	810-2492	Fitting, Quick-Connect Straight (receives Teflon vent tube)
*	811-1071	Tube, Teflon Vent

Not illustrated.

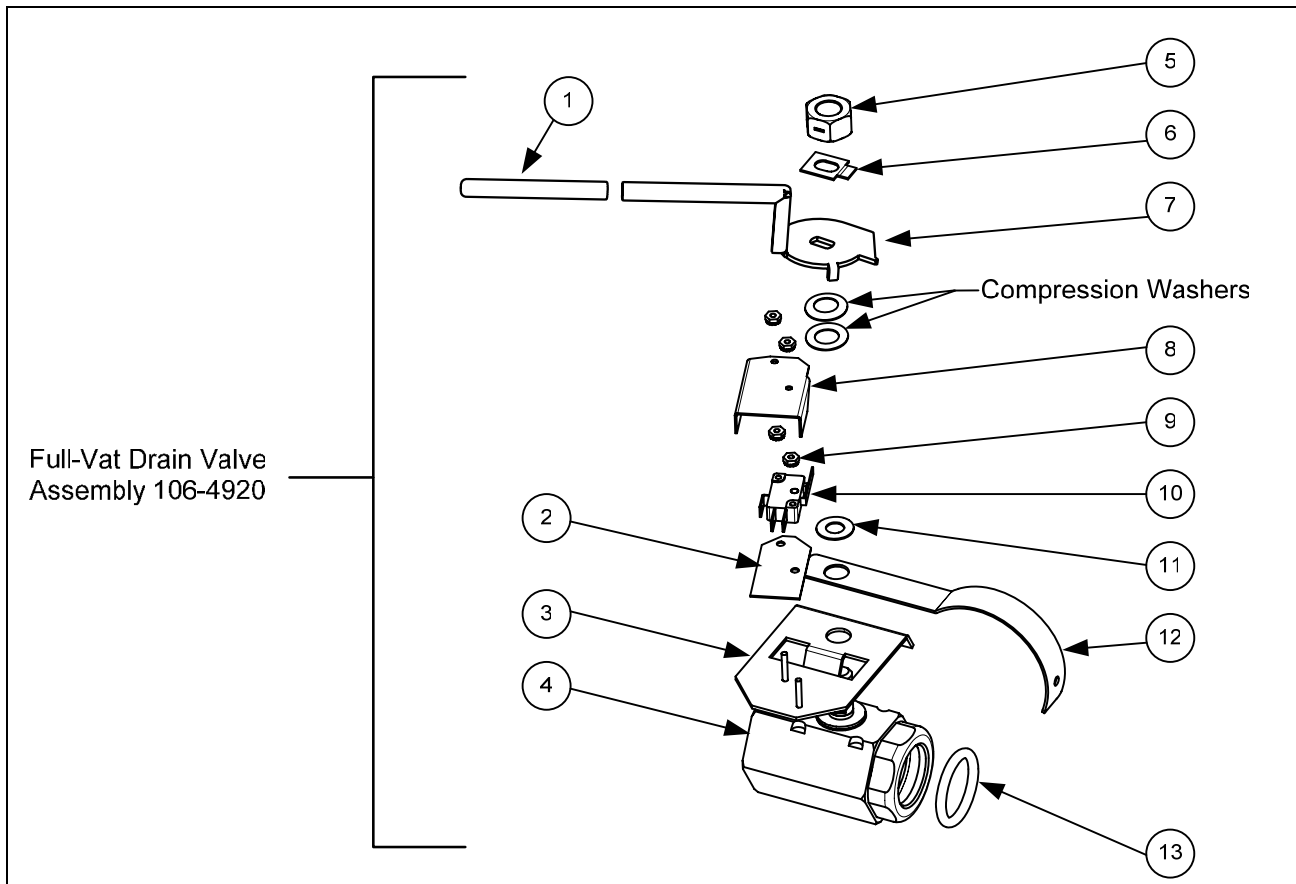
8.3.2 Drain Valve Assembly and Component Parts

8.3.2.1 FPH117 Single Drain Valve Assembly



ITEM	PART #	COMPONENT
	106-4962	Valve Assembly, Full Vat Drain
1	810-2946	Valve, 1¼-inch Full-Vat Drain Single SS
2	106-5391	Bracket Assembly, Full-Vat Drain Safety Switch
3	816-0220	Insulation, Drain Safety Switch
4	807-2103	Microswitch, CE Straight Lever
5	210-9178	Cover, Dual Vat Drain Safety Switch
6	826-1366	Nut, 4-40 Keps Hex (Pkg. of 25)
7	824-1602	Handle, Full-Vat Drain Valve
8	210-9203	Nut, ½-13 2-Way Hex Lock SS
9	816-0639	Cap, Red Handle
10	210-9177	Retainer, Nut Drain Valve FV
11	816-0135	O-ring, Round Drain
*	813-0605	1 ½" Drain Valve Extension Down Spout

8.3.2.2 FPPH 217 Euro-Look Drain Valve Assembly and Component Parts



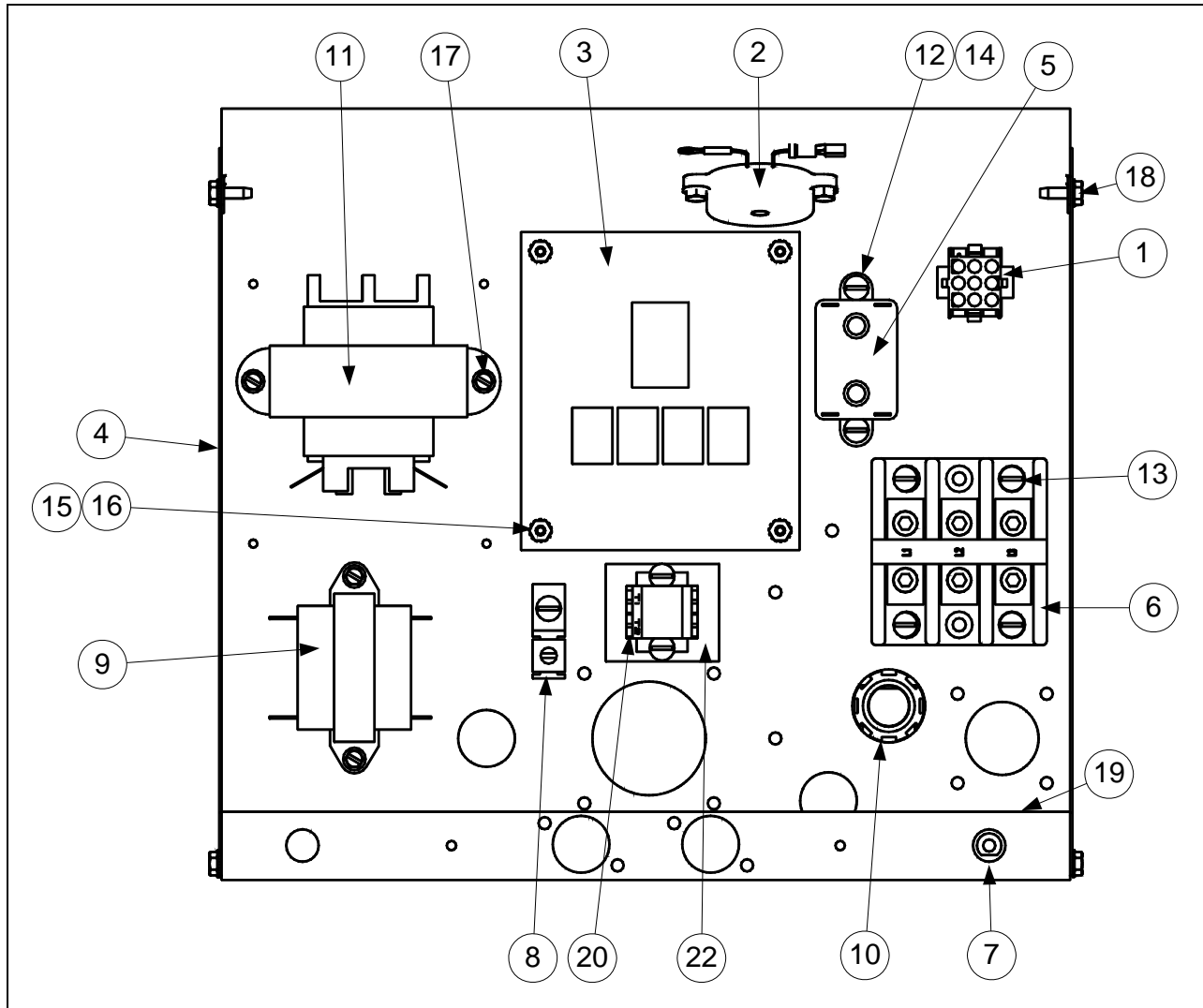
ITEM	Euro-Look PART #	COMPONENT
	106-4920	Valve Assembly, Full Vat Drain
1	816-0639	Cap, Red Handle
2	816-0220	Insulation, Drain Safety Switch
3	806-8137	Bracket Assembly, Full-Vat Drain Safety Switch
4	810-2946	Valve, 1.25-inch Full-Vat Drain
5	809-0540	Nut, 1/2-13 2-Way Hex Lock
6	210-9025	Retainer, Full-Vat Drain Valve Nut
7	824-1602	Handle, Full-Vat Drain Valve
8	210-9178	Cover, Dual Vat Drain Safety Switch
9	826-1366	Nut, 4-40 Keps Hex (Pkg. of 25)
10	807-2103	Microswitch, CE Straight Lever
11	810-1165	Washer, Teflon Drain Valve
12	210-8966	Support, 3" Drain
13	816-0135	Round Drain O-Ring
*	WIR0572	Wire Bundle, Drain Safety Switch

* Not illustrated.

8.4 Electronics and Wiring Components

8.4.1 Component Boxes

8.4.1.1 FPH117 Single Component Box



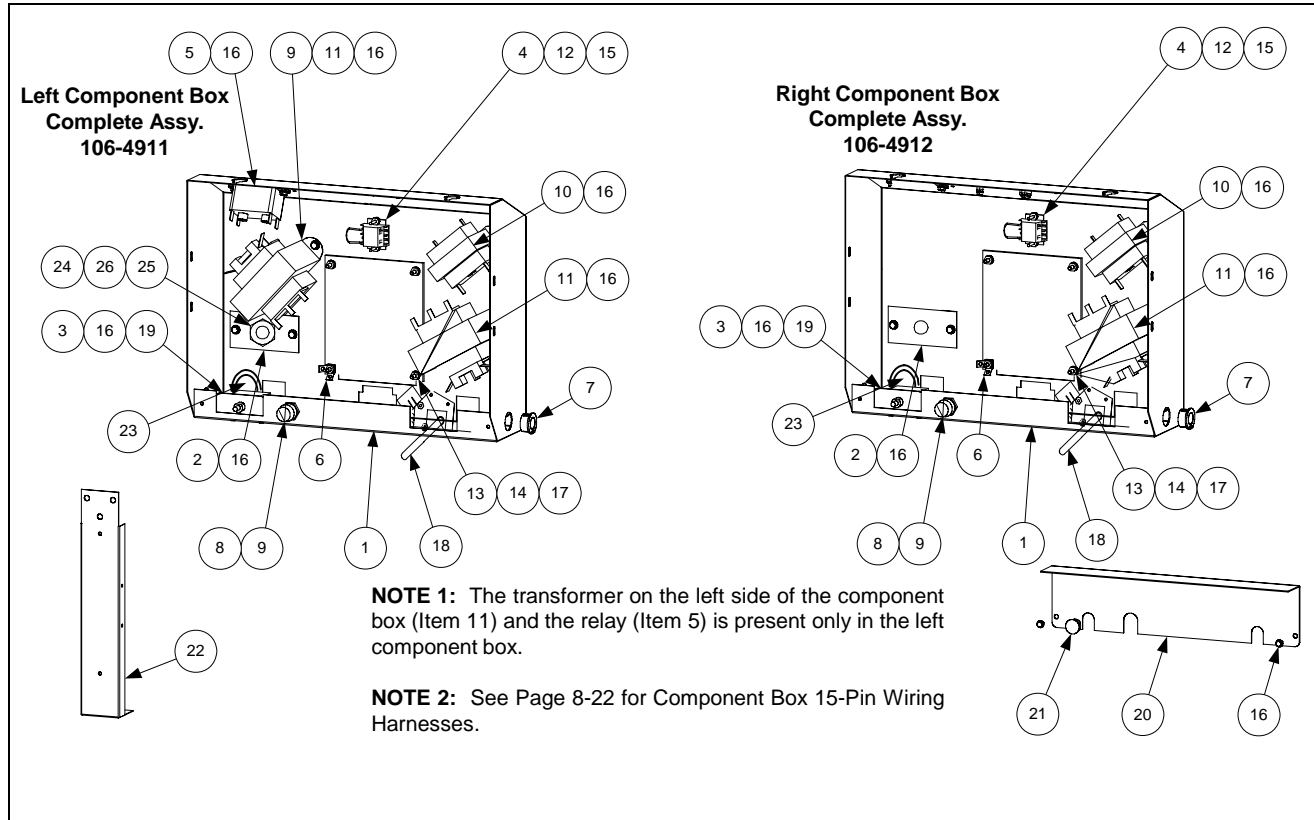
ITEM	PART #	COMPONENT
	106-4973	Component Box Assembly
1	106-0313	Wire Assembly, Component SFP120
2	806-7179SP	Sound Device
3	806-7935	PCP Assembly, Interface
4	106-4974	Component Box W/ Studs
5	807-0012	Relay, 18AMP 1/3 HP 24V Coil
6	807-0065	Block, Terminal
7	807-0069	Circuit Breaker, 10A
8	807-0070	Terminal, Ground Lug
9	807-0855	Transformer, 120V 50/60 - 12V 20A
10	807-1612	Clamp, 3/8 Connector Type (Thin Screw)

Continued on the following page

8.4.1.1 FPH117 Single Component Box cont.

ITEM	PART#	COMPONENT
11	807-2181	Transformer, Power 100-120V/24V 62VA
12	809-0102	Screw, 8 – 32 x 3/8 TR SL HD ZP
13	809-0104	Screw, 8 – 32 x 1/2 TR SL HD ZP
14	809-0247	Nut, 8 – 32 Hex KEPS ZP
15	809-0250	Nut, 6 – 32 Hex KEPS ZP
16	809-0349	Spacer, 4mm x 6mm Aluminum
17	809-0360	Screw, 8 x 3/8 Type 8 Hex Washer SL HD ZP
18	826-1374	Screw, #10 – 1/2 Hex Head (Pkg. of 25)
19	810-0045	Bushing, .875 Dia Hole 11/16
20	810-1164	Block, 1 Plg Screwless Terminal
21	812-0368	Conduit, Flex 3/8"
22	816-0217	Paper, Insulating Terminal Block CE
23	WIR-0428	Wire Assembly, Navy SFP Component
24	WIR-0581	Wire Assembly, Transformer 440V

8.4.1.2 FPPH 217 Component Boxes



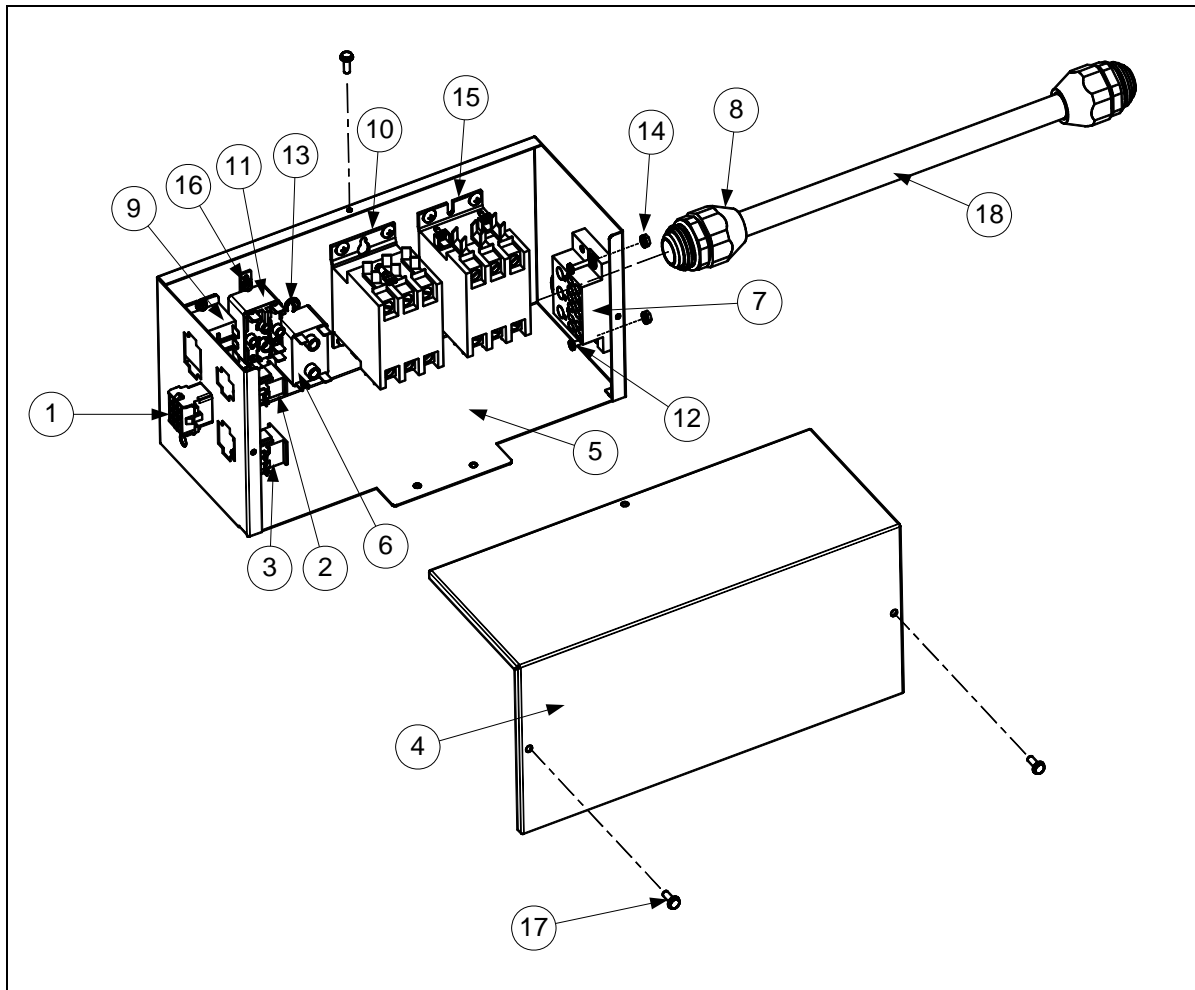
ITEM	PART #	COMPONENT
1	106-4757	Box Assembly, Component
2	210-9002	Bracket, Component Box Strain Relief
3	210-9003	Bracket, Circuit Breaker
4	806-9495SP	Terminal Block and Wire Assembly
5	807-0012	Relay, 18 Amp 1/3 HP 24V Coil
6	826-1337	Terminal, 1/4-inch Push-on (Pkg. of 5)
7	807-0121	Bushing, Heyco Plastic AB-625-500
8	807-1321	Holder, AGC Panel-Mount 1/4-inch Fuse
9	807-1597	Fuse, 3 Amp Slow-Blow
10	807-0855	Transformer, 100-120V/24V 20VA
11	807-2181	Transformer, 100-120V/12V 60VA
12	826-1366	Nut, 4-40 Keps Hex (Pkg. of 25)
13	809-0250	Nut, 6-32 Keps Hex
14	809-0349	Spacer, 4mm X 6mm Aluminum
15	826-1359	Screw, 4-40 X 3/4-inch Slotted Round Head (Pkg. of 25)
16	809-0359	Screw, #8 X 1/4-inch Hex Washer Head
17	806-7935	Interface Board
	807-3932	Relay, 12VDC SPDT 12 Amp
18	106-5120	Handle Assembly, rear flush FV
19	807-0069	Circuit Breaker, 10 Amp
20	210-9118	Guard, Finger
21	810-2445	Plug, Button

8.4.1.2 FPPH 217 Component Boxes cont.

ITEM	PART#	COMPONENT
22	210-8995	Brace, Component Box
23	807-1083	Bushing, Heyco
24	807-3868	Strain Relief
25	809-0581	Nut, ½ NPT Locking
26	809-0582	Washer ½ NPT Locking

8.4.2 Contactor Boxes

8.4.2.1 FPH117 Single Contactor Box



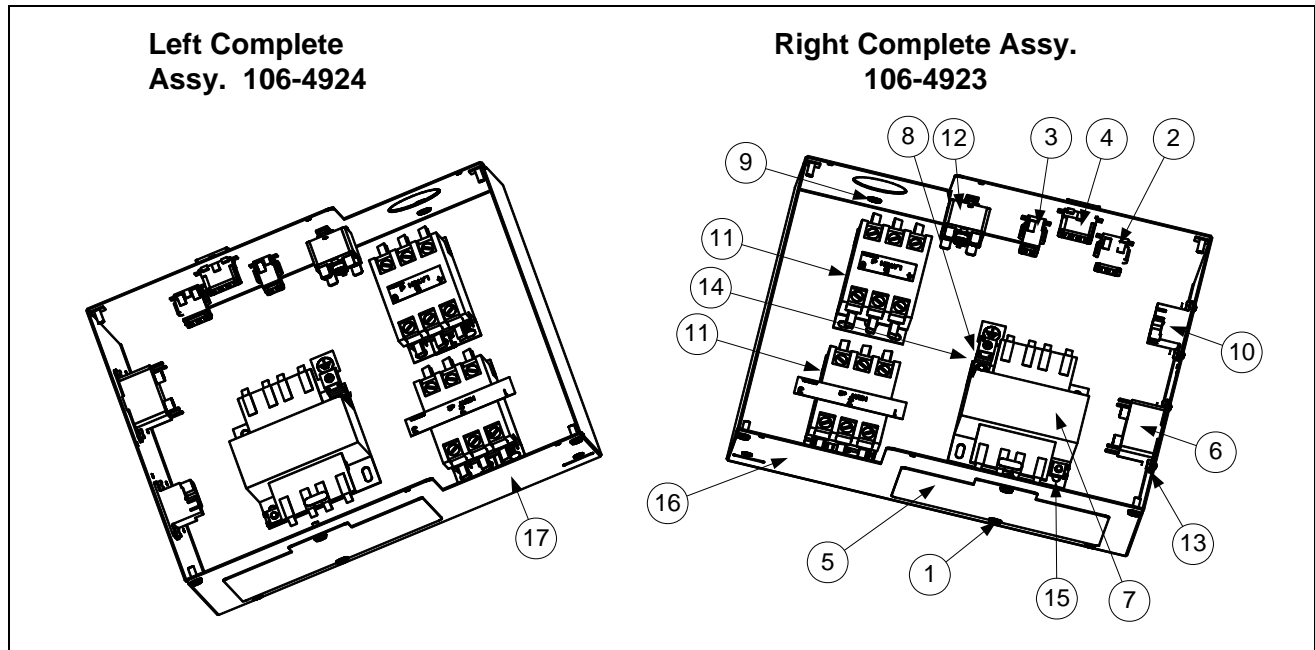
ITEM	PART #	COMPONENT
	106-4978	Contacteur Box Assembly
1	106-5131	Wire Assembly, CI Single FP
2	106-5132	Wire Assembly, HV DV LT Contactor Single
3	106-5133	Wire Assembly, HV DV RT Contactor Single
4	210-9440	Cover, Contactor Box Single FP
5	210-9751	Box, Contactor Single FP
6	807-0012	Relay, Tilt 18 AMP 1/3 HP 24V Coil
7	807-0878	Block, Terminal 3 Lug 12 P
8	807-1338	Fitting, Plastic 3/4 Dia Conduit
9	807-1683	Relay, Power 12 VDC
10	807-2284	Contacteur, 50 AMP Mech 24V Coil
11	807-2434	Relay, Shunt 24V Coil 18AMP
12	809-0096	Screw, 6 - 32 x 5/8 Bindings SL HD ZP
13	809-0102	Screw, 8 - 32 x 3/8 TR HD ZP
14	809-0250	Nut, 6 - 32 KEPS HX ZP
15	809-0266	Screw, 10- 1/2 Phil TR HD ZP

8.4.2.1 FPH117 Single Contactor Box cont.

ITEM	PART#	COMPONENT
16	809-0360	Screw, 8 x 3/8 HX Washer SL HD ZP
17	809-0500	Screw, 410 SS #10x1/2 Hex Washer HD Type B Point
18	812-0917	Conduit, 3/4 x 12 LG Flexible
*	WIR0427	Wire Assembly, Navy Single FP
*	WIR0650	Wire Assembly, Contactor Single FP

* Not Illustrated

8.4.2.2 FPPH217 Contactor Box



NOTE 1: Left and right contactor box assemblies are mirror images of one another. With the exception of the box itself, all components of a left-hand assembly, including the lid, are the same as those in the corresponding right-hand assembly and vice versa.

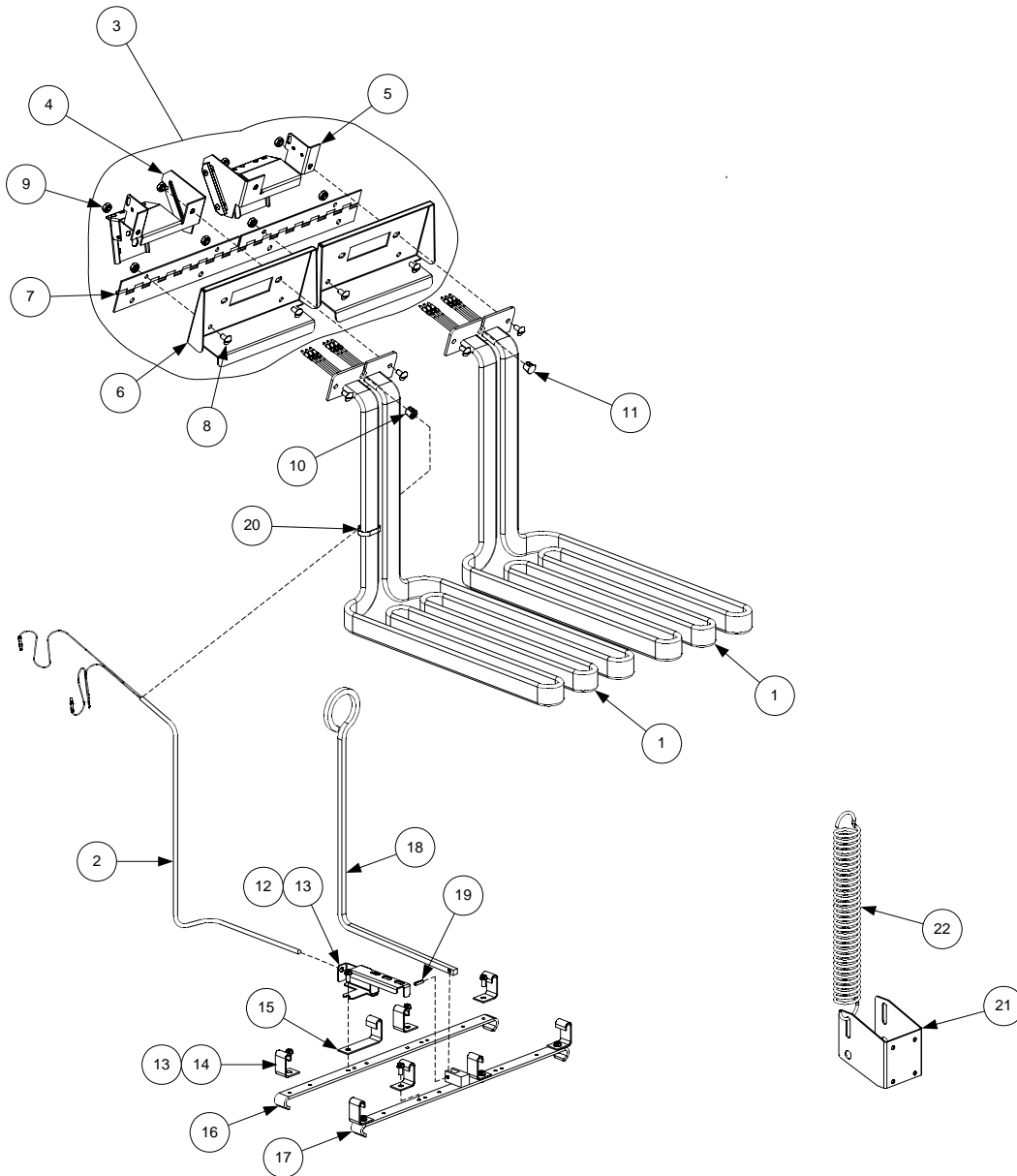
NOTE 2: See Page 8-21 for Contactor Box Wiring Assembly

ITEM	PART #	COMPONENT
1	826-1374	Screw, #10 x 1/2 Hex Head (Pkg. of 25)
2	106-5149	Wire Harness, Contactor Box Right Element FPP
3	106-5150	Wire Harness, Contactor Box Left Element FPP
4	106-5152	Wire Harness, Contactor Box CI FV FPP
5	210-9677	Door, Contactor Box w/o Hinge
6	807-0012	Relay, Tilt 18 Amp 1/2 HP 24V Coil
7	807-0064	Transformer, 480V/120V 150VA
8	807-0070	Terminal, Ground Lug
9	826-1339	Bushing, .375 Split (Pkg. of 10)
10	807-1683	Relay, Power 12 VDC
11	807-2284	Contactor, 50 Amp MECH 24V Coil
12	807-2434	Relay, Shunt 24V Coil 18 Amp
13	826-1358	Nut, 6-32 Keps Hex (Pkg. of 25)
14	826-1376	Nut, 10-32 Keps Hex (Pkg. of 10)
15	809-0448	Clip, Tinnerman C1350-10A
16	106-5117	Box Assembly, FPP Right Contactor
17	106-5118	Box Assembly, FPP Left Contactor
*	809-0360	Screw, #8 X 3/8-inch Hex Washer Slot Head
*	809-0123	Screw, #10 X 3/4-inch Slot Head
*	826-1365	Screw, 6-32 X 3/8-inch Slot Head (Pkg. of 25)
*	210-9634	Lid, Left or Right Contactor Box

Note: On single units, the transformer is located in the tilt housing area. On double units, the transformer is located inside the contactor box.

* Not illustrated.

8.4.3 Heating Element Assembly and Associated Parts



NOTES:

The only difference between element assemblies for different voltage and kW ratings is the element itself (Item 1)

Items 21 and 22 are shown as associated parts. They are not part of the element assembly.

8.4.3 Heating Element Assembly and Associated Parts cont.

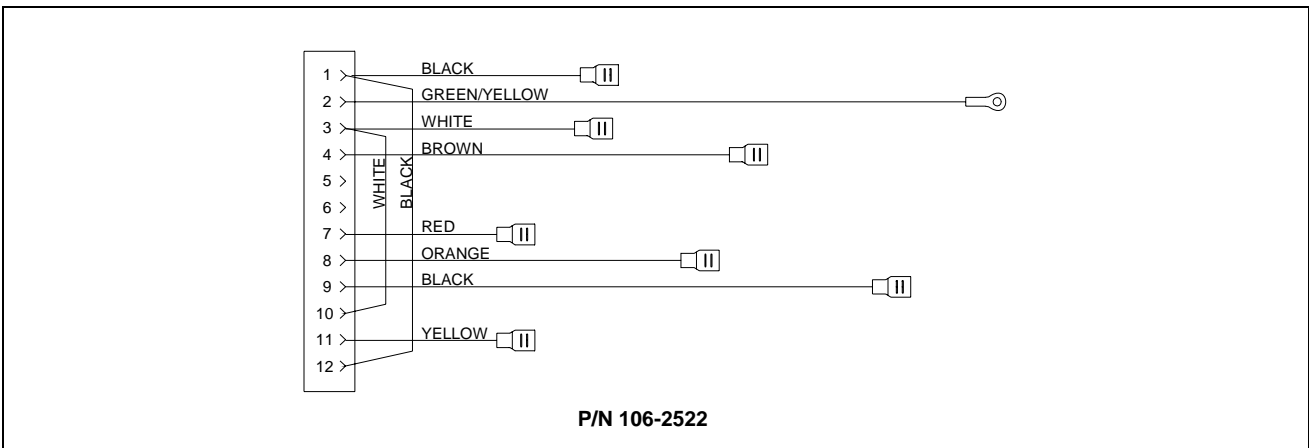
ITEM	PART #	COMPONENT
	106-4964	Element Assembly FV 440V 17kW w/ Lift Handle Single FPH117
	106-4922	Element Assembly FV 480V 17kW w/ Lift Handle FPPH217
1	807-2650	Element, 440V 8.5kW
	807-2652	Element, 480V 8.5 kW
2	826-1526	Probe, Temperature Kit (incl. Probe and Tie Wrap)
3	106-4965	Tilt Plate Assembly Single FPH117
	106-4921	Tilt Plate Assembly FPPH217
4	106-4966	Bracket, Left Spring Slot Single FPH117
	106-4759	Bracket, Left Spring Slot FPPH217
5	106-4967	Bracket, Right Spring Slot Single FPH117
	106-4760	Bracket, Right Spring Slot FPPH217
6	210-9183	Tilt Plate, Single FPH117
	210-9108	Tilt Plate, FPPH217
7	810-0035	Hinge
8	826-1330	Screw, 10-32 X 3/8-inch Slotted Truss Head (Pkg. of 25)
9	826-1376	Nut, 10-32 Keps Hex (Pkg. of 10)
10	807-1025	Bushing, .375-inch Split (Pkg. of 10)
11	816-0480	Plug, .375-inch Dome
12	910-5022	Bracket, Temperature Probe
13	809-0503	Screw, 8-32 X 3/8-inch Slotted Hex Head
14	210-9180	Clamp, Element (Short) Single FPH117
	210-9109	Clamp, Element (Short) FPPH217
15	210-9181	Clamp, Element (Long) Single FPH117
	210-9110	Clamp, Element (Long) FPPH217
16	910-3681	Support, Full-Vat Element Rear
17	823-2377	Support, Full-Vat Element Front
18	810-2971	Handle, Element Lift SS
19	826-1364	Pin, .125 X .5-inch Split (Pkg. of 25)
20	809-0567	Tie-Wrap, Metal
21	210-9192	Bracket, Lower Spring Slot Single FPH117
	210-9001	Bracket, Lower Spring Slot (Stainless) FPPH217
22	810-2945	Spring, Element FPH117, FPPH217

8.4.4 Remote Digital Controller

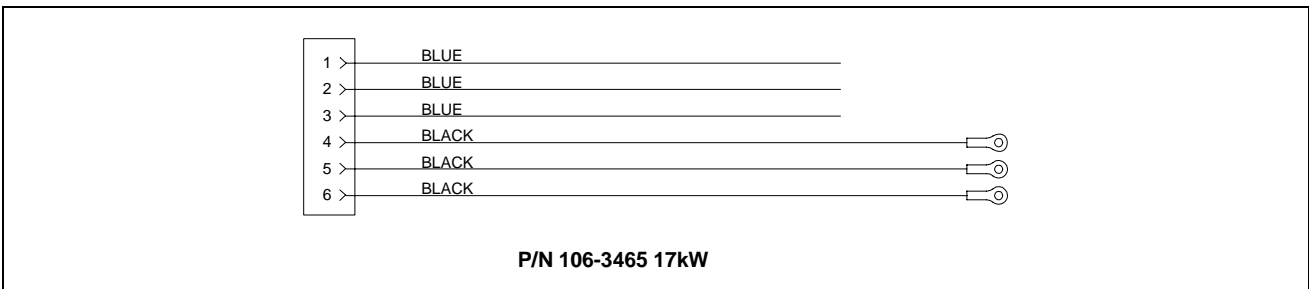


8.4.5 Wiring Assemblies and Harnesses

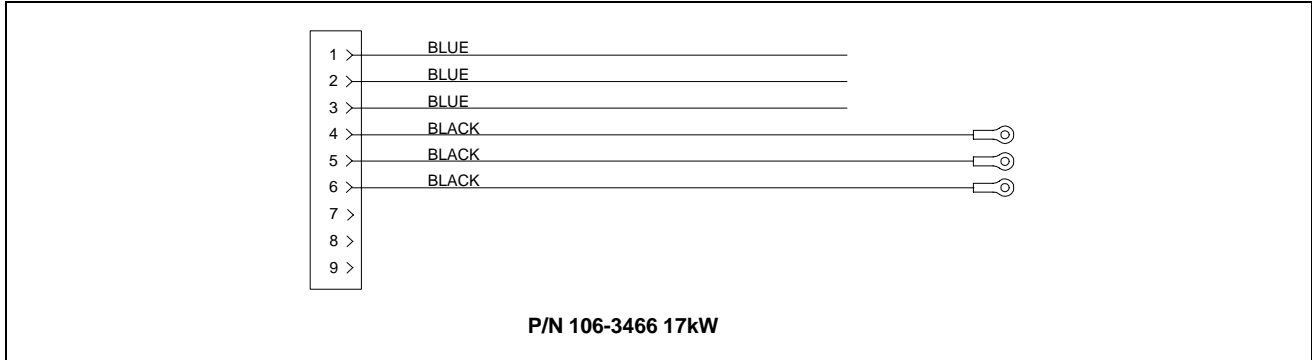
8.4.5.1 FPPH217 Contactor Box Wiring Assembly – 12-Pin Full-Vat C-1



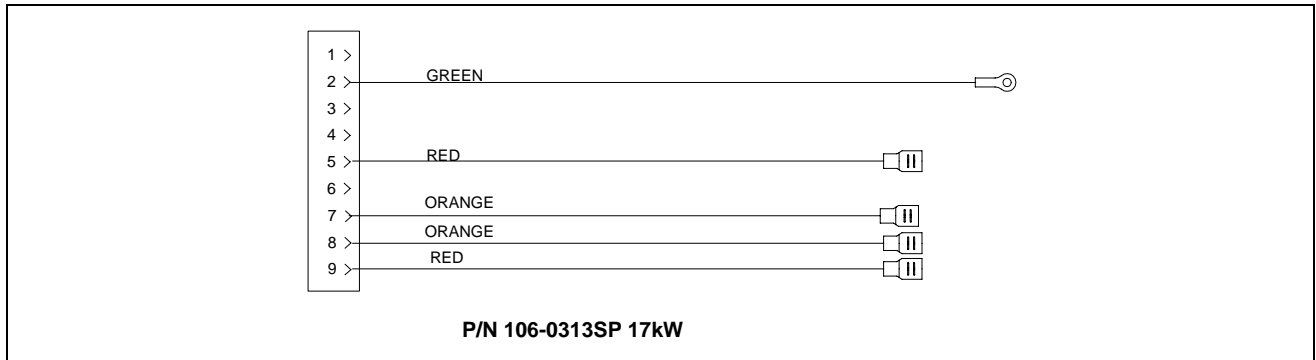
8.4.5.2 FPPH217 Contactor Box Wiring Assemblies – 6-Pin (Left Element)



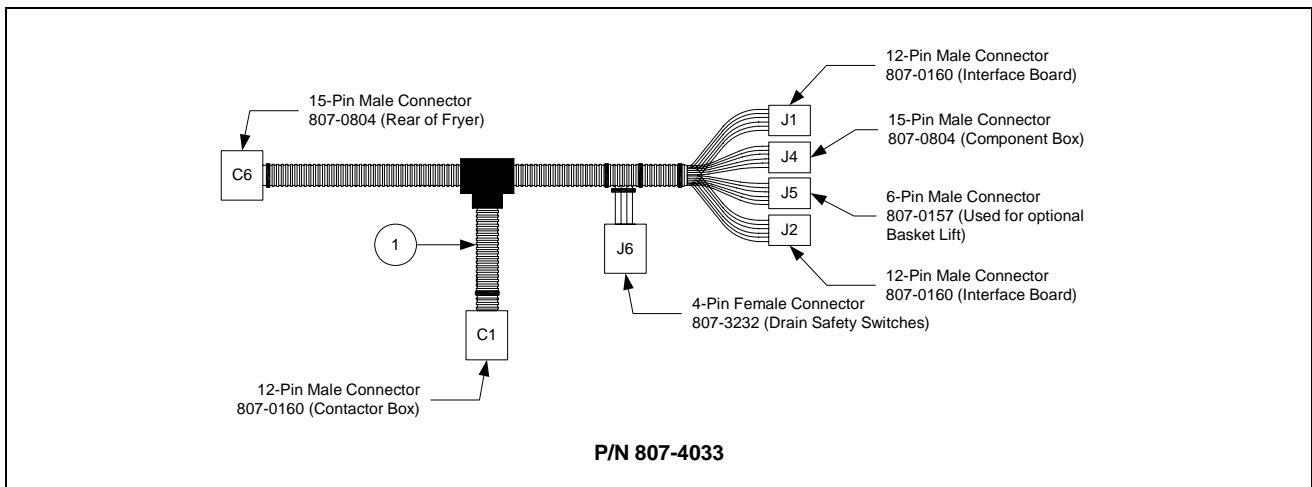
8.4.5.3 FPPH217 Contactor Box Wiring Assemblies – 9-Pin (Right Element)



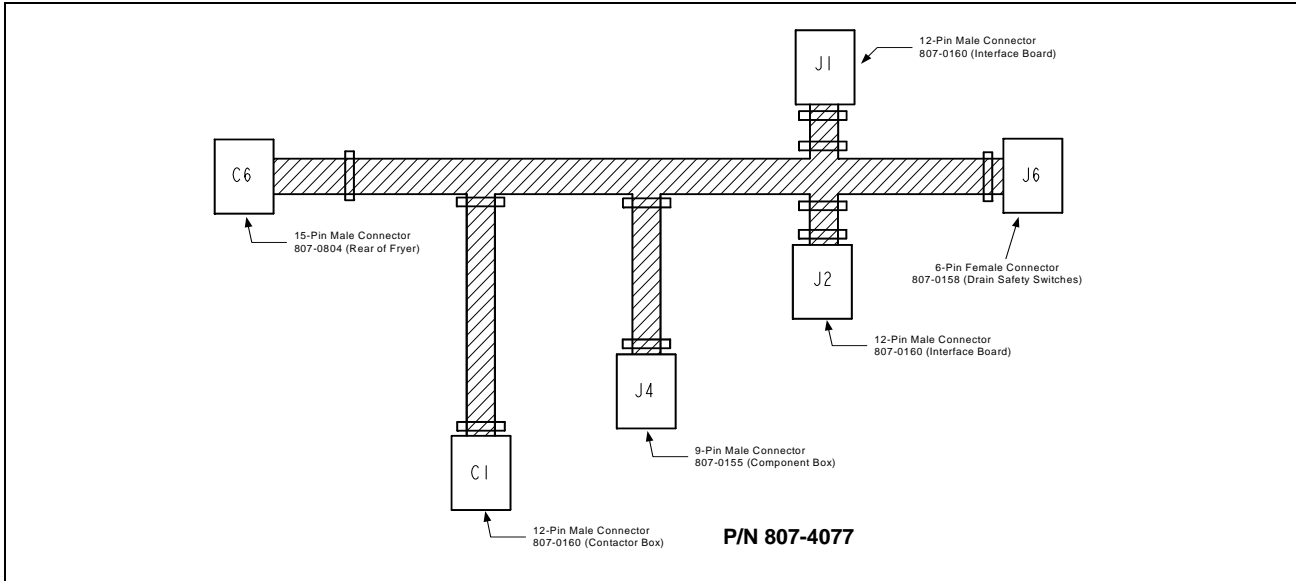
8.4.5.4 FPH117 Single Contactor Box Wiring Assemblies



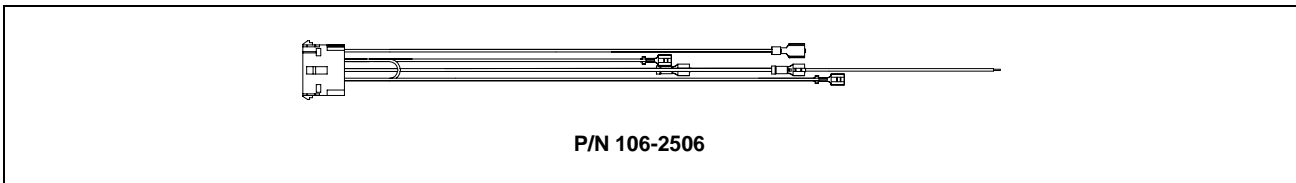
8.4.5.5 FPPH217 Main Wiring Harness



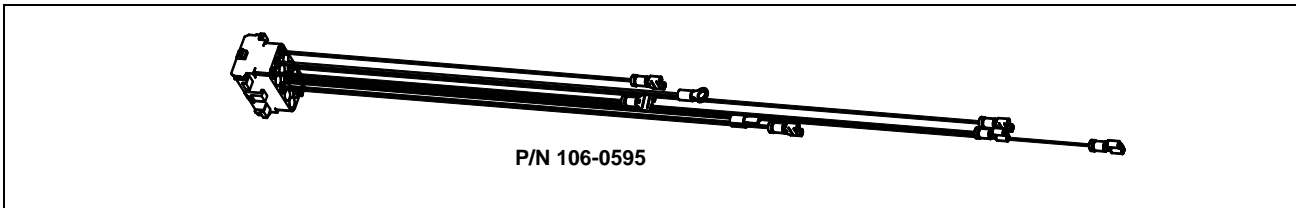
8.4.5.6 FPH117 Single Main Wiring Harness



8.4.5.7 FPPH217 Component Box Wiring Harness – 15-Pin

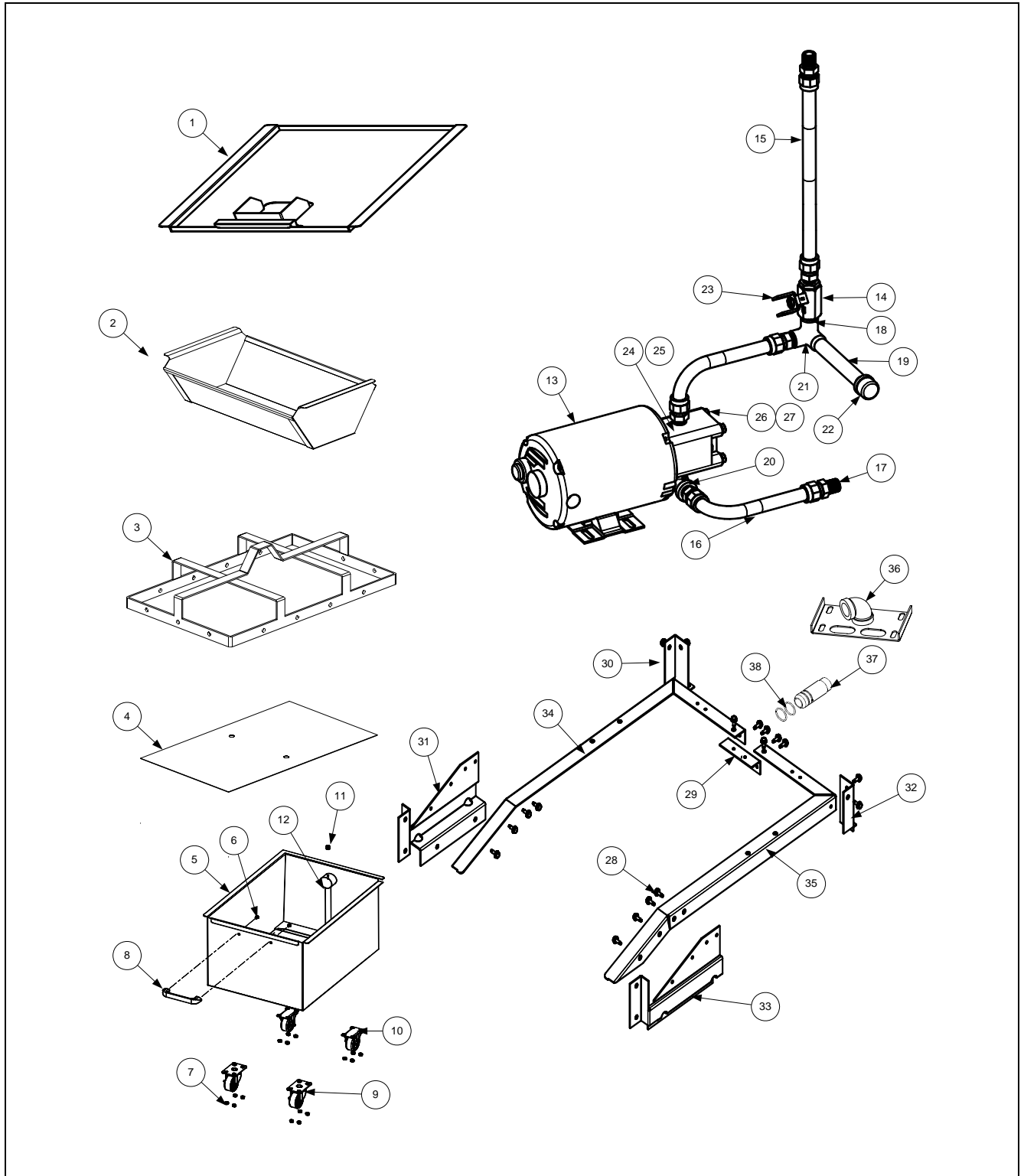


8.4.5.8 FPH117 Single Component Box Wiring Harness – 15-Pin



8.5 Filtration System Components

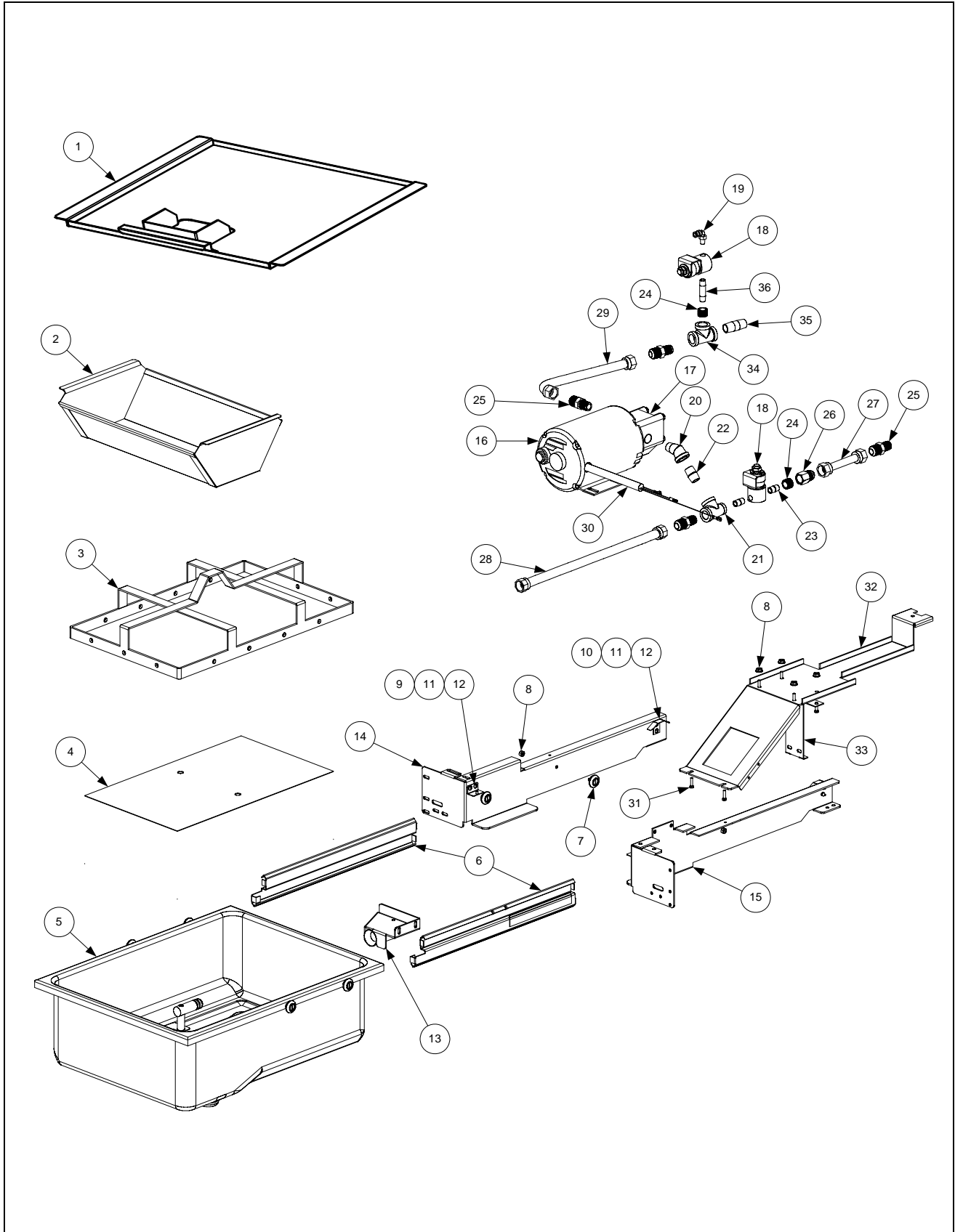
8.5.1 FPH117 Single Filtration Components



8.5.1 FPH117 Single Filtration Components cont.

ITEM	PART #	COMPONENT
	106-4945	Assembly, Filter Pan Single FPH117
1	806-9547	Lid, Single FPH117
2	810-2743	Crumb Tray
3	823-2899	Hold Down Ring
4	900-8933	SanaGrid Filter Screen
5	823-5141	Pan, Filter
6	826-1360	Screw, 10-24 x 5/16 RD SL HD ZP (Pkg. of 25)
7	826-1376	Nut, KEPS, 10 – 32 HX ZP (Pkg. of 10)
8	810-0180	Handle, Door
9	810-2805	Caster, 2” Filter Pan
10	810-2807	Caster, 2” Rigid
11	813-0568	Pipe Plug 1/8 NPT Socket Head
12	823-5142	Tube, Pan Suction Single FP
	106-4976	Plumbing Assembly, 120V FV Single FP
13	806-6034	Pump & Motor Assembly, 115V 60 HZ
14	810-2944	Gemini Valve w/out Handle
15	810-1057	Flex Line 5/8” O.D. x 13” Long
16	810-1067	Flex Line 5/8” O.D. x 8.5” Long
17	810-1668	Adapter, Male 7/8” O.D. x 1/2”
18	813-0022	Nipple, 1/2” x Close N.P.T. B.M.
19	813-0098	Nipple, 1/2” x 6.50” N.P.T. B.M. Pipe
20	813-0616	Elbow, ST 1/2” x 1/2” NPT 90° BM
21	813-0331	Elbow, W/Side Outlet – 1/2” NPT
22	813-0469	Cap, Pipe 1/2” BM
23	210-9197	Handle, Right RF Valve
24	826-1264	Pump and Gasket Kit, Pump, Viking 4 GPM 2-piece
25	816-0093	Gasket, Pump / Motor
26	809-0514	Cap Screw, 5/16” – 18 NC SAE Grade 5, HX HD
27	809-0194	Washer, Flat 5/16” SAE ZP
	106-4951	Rail Assembly, Filter Pan Single FPH117
28	809-0500	Screw, 10 – 1/2” HX HD SS
29	210-9145	Angle, Joining, Pan Rails Filter Magic
30	211-9147	Leg, Pan Rail FM Left
31	211-9146	Bracket, Attaching Filter Pan Left
32	212-9147	Leg, Pan Rail FM Right
33	212-9146	Bracket, Attaching Filter Pan Right
34	211-9455	Rail, Filter Pan Left
35	212-9455	Rail, Filter Pan Right
36	823-5151	Mount W/A, Male Connector
37	810-0697	Disconnect, Filter Pan Connection (Male)
38	826-1392	O-Ring, Filter Pan Connection (Pkg. of 5)

8.5.2 FPPH217 Filtration Components

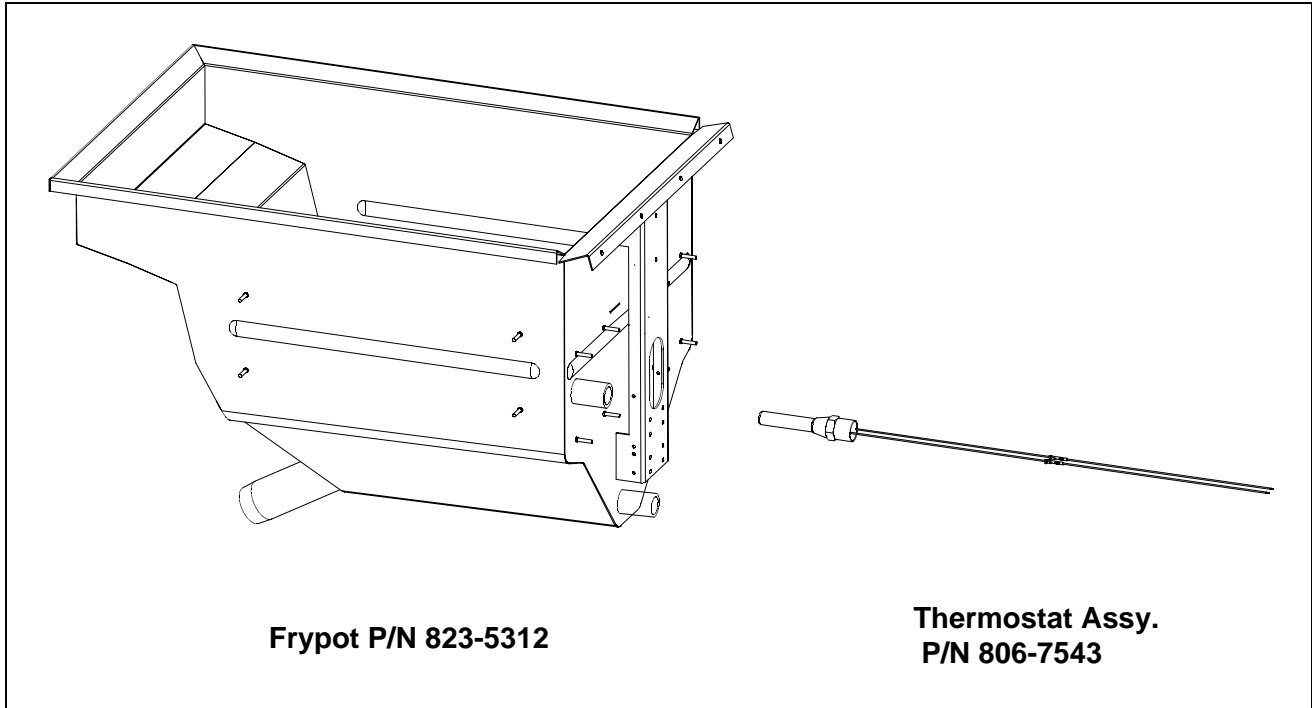


8.5.2 FPPH217 Filtration Components cont.

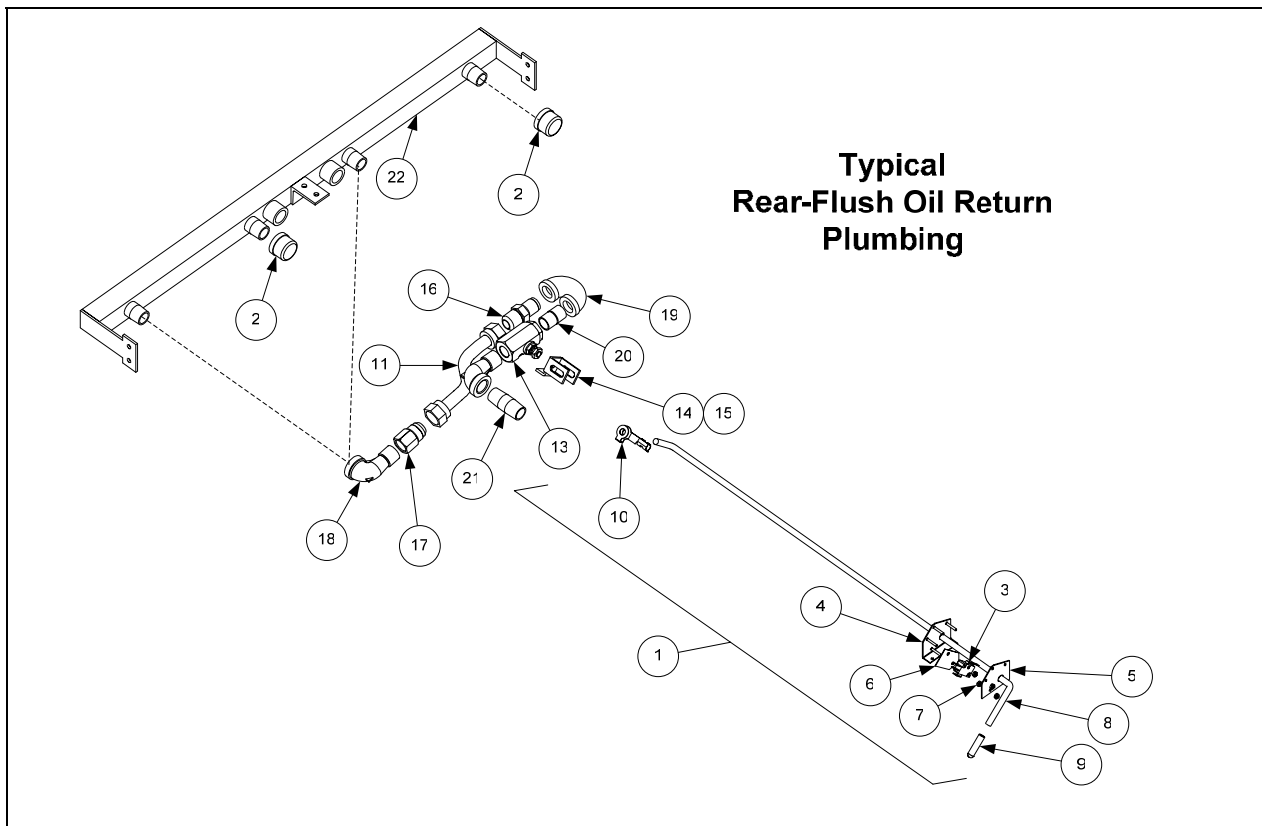
ITEM	PART #	COMPONENT
*	826-1979	Filter Pan Roller Kit (four each of Items 7 and 8)
*	826-1980	Service Filter Pan (Item 5 minus Item 2)
*	826-1981	Service Filter Pan Assembly (Service Filter Pan above plus Items 3 and 4)
*	826-1392	O-Ring (Pkg. of 5; used with Item 5)
*	813-0568	Plug, 1/8-inch Socket Head Pipe (component of Item 5; two required)
*	811-1071	Tubing, 1/4-inch OD Teflon Vent (sold by the foot)
*	106-2851	Heater Strip Assembly, 208-250V
1	823-5130	Lid
2	810-2743	Crumb Tray (component of Item 5)
3	810-2091	Hold Down Ring
4	200-2124	SanaGrid Filter Screen
5	106-4925	Pan, One-Piece Filter (includes Item 2,)
6	810-2012	Rail Set, Filter Pan Roller (includes one left and one right)
7	810-2198	Roller, Filter Pan and Rail
8	826-1372	Nut, 1/4-20 Hex (Pkg. of 10)
9	823-4675	Bracket, Lid Support (<i>for units built before Feb 04, use 823-3875</i>)
10	210-9000	Guide, Filter Pan Lid
11	809-0503	Screw, 8-32 X 1/2-inch Slotted Truss Head
12	809-0247	Nut, 8-32 Hex Keps
13	823-5133	Suction Tube
14	210-8979	Rail, Left Filter
15	210-8978	Rail, Right Filter
16	807-3859	Kit, Motor and Gasket 220-240V
17	826-1264	Pump and Gasket Kit
18	807-2484	Valve, 1/4-inch Solenoid
19	810-2493	Fitting, 1/4 -inch x 90° Quick Connect
20	813-0342	Elbow, 1/2-inch 45° Street
21	813-0530	Tee, 1/2-inch X 1/4-inch X 1/2-inch Reducing
22	813-0087	Nipple, 1/2-inch Close
23	813-0838	Nipple, 1/4-inch Close
24	813-0304	Bushing, 1/2-inch to 1/4-inch Flush
25	810-1668	Adapter, 5/8-inch to 1/2-inch NPT Male
26	810-1669	Adapter, 5/8-inch to 1/2-inch NPT Female
27	810-1680	Flexline, 5.0-inch Oil Return
28	810-1057	Flexline, 17.5-inch Oil Return
29	810-1043	Flexline, 11.5-inch Oil Return
30	807-3828	Cable, FootPrint Pro Pump Motor
31	826-1375	Screw, 10-32 X 3/4-inch Hex Trim Head (Pkg. of 5)
32	210-9016	Bridge, Filter Motor
33	210-9029	Support, Contactor Box
34	813-0003	Tee, 1/2-Inch
35	813-0298	Nipple, 1/2-inch 2.0-inch
36	813-0537	Nipple, 1/4-inch 2.0-inch
*	810-1043	Flexline, 9.5-inch Oil Return
*	810-1057	Flexline, 13.0-inch Oil Return

* Not illustrated

8.6 Frypot Assembly and Thermostat



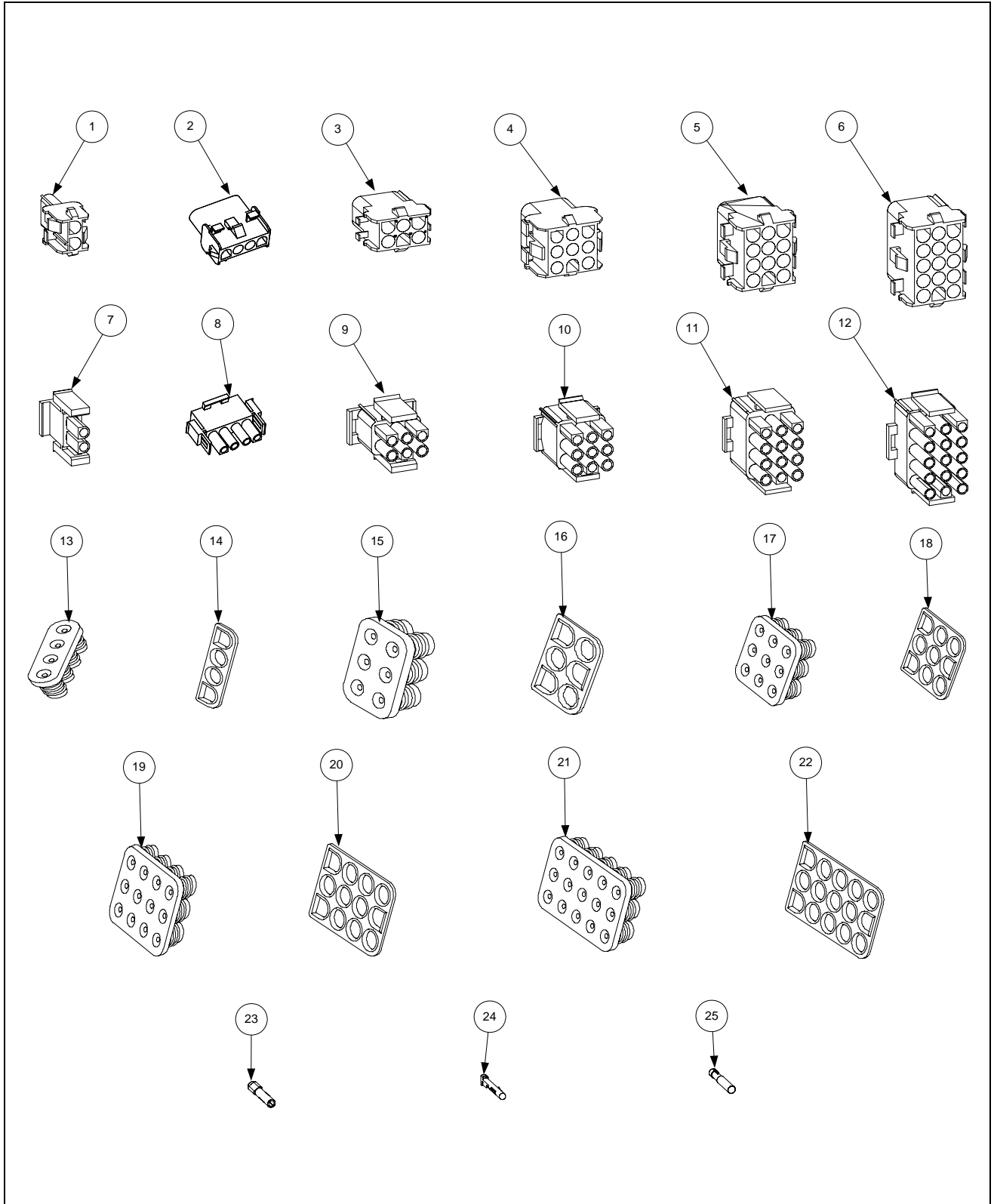
8.7 FPPH217 Oil Return System Components



8.7 FPPH217 Oil Return System Components cont.

ITEM	PART #	COMPONENT
1	106-5120	Handle Assembly, Full-Vat t Rear Flush Complete
2	813-0469	Cap, ½-inch NPT Pipe
3	807-2103	Microswitch, Straight Lever
4	106-4749	Bracket Assembly
5	210-8998	Bracket, Handle Retainer
6	816-0220	Insulation, Oil Return Microswitch
7	826-1366	Nut, 4-40 Keps Hex (Pkg. of 25)
8	810-2972	Rod, Handle Full-Vat
9	816-0643	Grip, Oil Return Valve Handle
10	809-0601	Clip, Clevis
11	810-2532	Flexline, 7.0-inch
12	810-1067	Flexline, 8.5-inch
13	810-2944	Valve, ½-inch Ball
14	200-5438	Handle, Rear Flush Valve
15	900-2935	Retainer, Oil Return Valve Nut
16	810-1668	Adapter, ⅝-inch to ½-inch NPT Male
17	810-1669	Adapter, ⅝-inch to ½-inch NPT Female
18	813-0165	Elbow, ½-inch X 90° Street
19	813-0570	Elbow, 180° ½-inch NPT
20	813-0022	Nipple, ½-inch X Close NPT
21	813-0298	Nipple, ½-inch X 2.0-inch NPT
22	810-2255	Manifold, Rear Oil Return Two-Station Fryer

8.8 Wiring Connectors, Pin Terminals, Seals, and Power Cords



8.8 Wiring Connectors, Pin Terminals, Seals, and Power Cords cont.

ITEM	PART #	COMPONENT
		Power Cords
*	807-3834	Cable, 3-Phase 4-Wire (Fryer Power Cable)
*	807-4142	Cord, Filter System Power 220V 15A
		Connectors
1	807-1068	2-Pin Female
2	807-3232	4-Pin Female
3	807-0158	6-Pin Female
4	807-0156	9-Pin Female
5	807-0159	12-Pin Female
6	807-0875	15-Pin Female
7	807-1067	2-Pin Male
8	807-2078	4-Pin Male
9	807-0157	6-Pin Male
10	807-0155	9-Pin Male
11	807-0160	12-Pin Male
12	807-0804	15-Pin Male
		Universal Mate-N-Lok Seals
13	816-0675	4-Pin Wire Seal
14	816-0676	4-Pin Interface Connector Seal
15	816-0667	6-Pine Wire Seal
16	816-0668	6-Pin Interface Connector Seal
17	816-0669	9-Pin Wire Seal
18	816-0670	9-Pin Interface Connector Seal
19	816-0671	12-Pin Wire Seal
20	816-0672	12-Pin Interface Connector Seal
21	816-0673	15-Pin Wire Seal
22	816-0674	15-Pin Wire Seal
23	826-1341	Terminal, Female Split Pin (Pkg of 25)
24	826-1342	Terminal, Male Split Pin (Pkg of 25)
25	807-2518	Plug, Mate-N-Lock (Dummy Pin)

* Not illustrated.