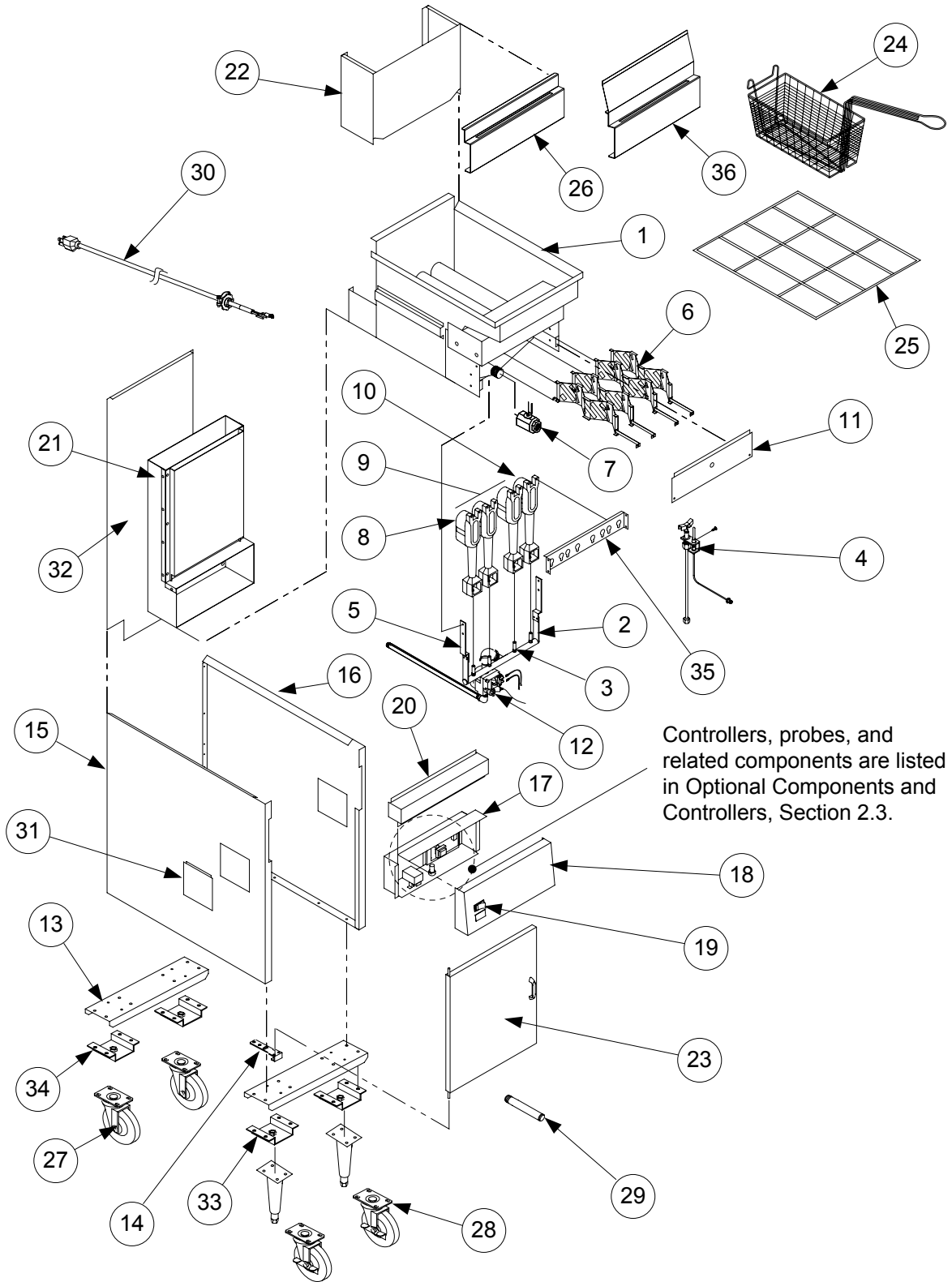


DECATHLON SERIES GAS FRYERS

CHAPTER 2: PARTS LIST

2.1 Decathlon Primary Components



DECATHLON SERIES GAS FRYERS CHAPTER 2: PARTS LIST

All items used only for either "D", "SCFD", "CFD", or "FPD65" fryer models have been marked for clarity. Unmarked items may be used on either model. If you have any questions, call the Frymaster and Dean 24-Hour Service Hotline, 1-800-551-8633.

2.1.1 Decathlon D20 Primary Components

| ITEM | PART # | COMPONENT |
|------|------------|--|
| 1 | 826-1875 | Frypot - S/S |
| 2 | 810-2167 | Manifold, Gas |
| 3 | 810-2050 | Orifice, Natural Gas #44, 2.18 mm |
| * | 810-2062 | Orifice, Natural Gas #38, 2.58 mm |
| * | 810-0710 | Orifice, LP Gas #54, 1.40 mm |
| * | 810-2060 | Orifice, G20/G25 Gas #42, 2.40 mm (CE only) |
| * | 810-2059 | Orifice, G31 Gas #53, 1.51 mm (CE only) |
| 4 | 810-2158 | Pilot Burner, Natural/G20/25 Gas |
| * | 810-2526 | Pilot Burner, LP/G31 Gas |
| * | 809-0766 | Nut, Keps 10-32 SS Hex |
| * | 809-0845 | Screw, 10-32 x $\frac{3}{8}$ " Hex Slotted Head |
| * | 810-0705 | Tube, Pilot Gas Supply |
| * | 810-0703 | Tube, $\frac{1}{4}$ " x 20" Pilot Gas Supply |
| 5 | 200-1615 | Manifold Support Bracket |
| 6 | 210-5216 | Diffuser Assembly |
| 7 | ▶▶▶ | See Drain Manifold Components, Section 2.5 |
| 8 | 810-2151 | Burner, Left Side |
| 9 | N/A | Burner, Center |
| 10 | 810-2150 | Burner, Right Side |
| 11 | 200-1331 | Heat Shield |
| 12 | 807-3552 | Gas Valve, Natural Gas Electronic Ignition, 24 VAC |
| * | 807-3628 | Gas Valve, LP Gas Electronic Ignition, 24 VAC |
| * | 810-2156 | Gas Valve, Natural Gas, 120 VAC |
| * | 810-2323 | Gas Valve, LP Gas, 120 VAC |
| * | 807-2091 | Gas Valve, G20/G25 Gas, 24 VAC (CE only) |
| * | 807-2127 | Gas Valve, G31 Gas, 24 VAC (CE only) |
| * | 807-3294 | Gas Valve, Natural Gas Constant Pilot, 24 VAC |
| * | 807-3295 | Gas Valve, LP Gas Constant Pilot, 24 VAC |
| * | 810-0691 | Vent Tube |
| 13 | 200-1148 | Channel, Front and Rear |
| 14 | 200-1675 | Bracket, Lower Hinge |
| 15 | 211-3261 | Side Panel, Left |
| * | 201-3268 | Panel, Inner Left (multi-battered units) |
| 16 | 212-3261 | Side Panel, Right |
| * | 202-3268 | Panel, Inner Right Side (multi-battered units) |
| 17 | 824-1025 | Wireway, Control Panel |
| 18 | 07-0132 | Control Panel, Blank |
| * | 07-0132-1 | Control Panel, One Hole |
| * | 07-0132-2 | Control Panel, Two Holes |
| 19 | ▶▶▶ | See Optional Components, Section 2.3 |
| 20 | 824-1125 | Topcap (D50/D20) |
| * | 210-3323 | Topcap (D220) |
| 21 | 106-1583SP | Flue Assembly |
| * | 200-1342 | Shield, Flue Heat |
| * | 200-1344 | Front, Flue Box |

* Not illustrated.

**DECATHLON SERIES GAS FRYERS
CHAPTER 2: PARTS LIST**

2.1.1 Decathlon 20 Primary Components (cont.)

| ITEM | PART # | COMPONENT |
|------|------------|--|
| * | 200-1351 | Rear, Flue Box |
| * | 200-3647 | Deflector, Flue |
| 22 | 823-3368 | Flue Cap |
| 23 | 106-2121SP | Door Assembly (D20) |
| * | 210-3266 | Panel, Door Outer |
| * | 200-3267 | Panel, Door Inner |
| * | 810-0180 | Handle, Door, Chrome |
| * | 809-0918 | Screw, 10-24 x 1/2" Slotted Head (use with 810-2105) |
| * | 809-0191 | Washer, 1/4" Spring-lock (use with 810-2105) |
| * | 200-1301 | Pin, Door, 20 1/4" |
| * | 810-0066 | Magnetic Catch, Door |
| 24 | 823-0271 | Basket, Twin |
| 25 | 803-0327 | Grid, Frypot, Screen-type |
| 26 | 210-3368 | Hanger, Basket, D20 Single System |
| * | 210-3911 | Hanger, Basket, D250/20 System |
| 27 | 810-0356 | Caster, Plate-mount 5-inch without Brake |
| * | 810-2406 | Caster, Single Stud-mount 5-inch without Brake |
| 28 | 810-0357 | Caster, Plate-mount 5-inch with Brake |
| * | 810-2405 | Caster, Single Stud-mount 5-inch with Brake |
| * | 826-1389 | Screw, 1/4-20 x 3/4" Hex Head (for plate-mount casters, qty: 10) |
| 29 | 813-0669 | Drain Nipple, Extended 1" Drain |
| 30 | 106-0913SP | Cordset, 10' Power |
| 31 | 210-2804 | Cover, Outlet Duct |
| 32 | 200-3285 | Panel, Structural Back (D20, in multi-battered systems) |
| * | 200-1674 | Panel, Structural Back (D220) |
| 33 | 810-2411 | Leg, Single Bolt Mount (black) |
| * | 806-3811 | Leg Package, 4-bolt Mount (4 per set) |
| * | 806-5043 | Leg, Single |
| 34 | 823-3636 | Leg Support Assembly |
| 35 | 823-3346 | Bracket, Burner Mounting |
| 36 | 823-3715 | Hanger, Basket D20 Single (Chili's units only) |

* Not illustrated.

2.1.2 Decathlon D50 Primary Components

| ITEM | PART # | COMPONENT |
|------|----------|--|
| 1 | 826-1871 | Frypot - S/S (SCFD50, CFD50) |
| * | 826-1873 | Frypot - S/S (D50) |
| * | 826-1869 | Frypot - S/S, (DD50 Deep Depth, used in fryer batteries with D60) |
| * | 826-2037 | Frypot, Cracker Barrel (1.5" Drain) |
| 2 | 810-2169 | Manifold, Gas (D50) |
| * | 810-2130 | Manifold, Gas (SCFD50) |
| 3 | 810-2048 | Orifice, Natural Gas #39 2.53 mm (non-CE D50GHP, SCFD50G) |
| * | 810-2062 | Orifice, Natural Gas #38, 2.58 mm |
| * | 810-2059 | Orifice, LP/G31 Gas #53, 1.51 mm (CE, D50; non-CE, D50G(DD)HP & SCFD50G) |
| 4 | 810-2032 | Pilot Burner, Natural/G20/25 Gas |
| * | 810-2155 | Pilot Burner, LP/G31 Gas |
| * | 106-1439 | Pilot Burner, Natural Gas, with Thermocouple |

* Not illustrated.

**DECATHLON SERIES GAS FRYERS
CHAPTER 2: PARTS LIST**

2.1.2 Decathlon D50 Primary Components (cont.)

| ITEM | PART # | COMPONENT |
|------|------------|---|
| * | 106-0692 | Pilot Burner, Natural Gas, with Thermopile |
| * | 809-0766 | Nut, Keps 10-32 SS Hex |
| * | 809-0845 | Screw, 10-32 x $\frac{3}{8}$ " Hex Slotted Head |
| * | 810-0705 | Tube, $\frac{1}{4}$ " x 20" Pilot Gas Supply (one-piece gasline) |
| * | 810-0703 | Tube, $\frac{1}{4}$ " x 17 $\frac{1}{2}$ " Pilot Gas Supply (one-piece gasline) |
| 5 | 200-1314 | Bracket, Manifold Support |
| * | 200-1615 | Bracket, Manifold Support (right or left) |
| 6 | 210-5175 | Diffuser Assembly |
| 7 | ▶▶▶ | See Drain Manifold Components, Section 2.5 |
| 8 | 810-2151 | Burner, Left Side |
| 9 | 810-2149 | Burner, Center |
| 10 | 810-2150 | Burner, Right Side |
| 11 | 200-1330 | Heat Shield |
| * | 200-1363 | Lower Heat Shield |
| 12 | 807-3552 | Gas Valve, Natural Gas Electronic Ignition, 24 VAC |
| * | 807-3628 | Gas Valve, LP Gas Electronic Ignition, 24 VAC |
| * | 810-2156 | Gas Valve, Natural Gas, 120 VAC |
| * | 810-2323 | Gas Valve, LP Gas, 120 VAC |
| * | 807-3294 | Gas Valve, Natural Gas, Constant Pilot, 24 VAC |
| * | 807-3295 | Gas Valve, LP Gas, Constant Pilot, 24 VAC |
| * | 807-2091 | Gas Valve, G20/G25 Gas, 24 VAC (CE only) |
| * | 807-2127 | Gas Valve, G31 Gas, 24 VAC (CE only) |
| * | 810-0691 | Vent Tube |
| 13 | 200-1148 | Channel, Front and Rear |
| * | 200-2783 | Channel, Base |
| 14 | 200-1675 | Lower Hinge Bracket (previous production D50) |
| * | 823-5346 | Hinge, Lower Left (current production D50, SCFD50) |
| * | 823-5347 | Hinge, Lower Right (current production D50, SCFD50) |
| * | 823-5348 | Hinge, Upper Left (current production D50, SCFD50) |
| * | 823-5349 | Hinge, Upper Right (current production D50, SCFD50) |
| 15 | 211-2787 | Side Panel, Left Side |
| 16 | 212-2787SP | Side Panel, Right Side |
| 17 | 824-0961 | Wireway, Control Panel |
| 18 | 210-3716 | Control Panel, Blank |
| * | 210-2908 | Control Panel, One Hole |
| * | 210-2051 | Control Panel, Two Holes |
| * | 210-3747 | Control Panel, Three Holes |
| * | 210-3715 | Control Panel, Three Holes (basket lift option) |
| 19 | ▶▶▶ | See Optional Components, Section 2.3 |
| 20 | 824-1103 | Top Cap, Single System (D50, CFD50) |
| * | 824-0982 | Top Cap, Double System (D50, SCFD50) |
| * | 824-0983 | Top Cap, Triple System (D50, SCFD50) |
| * | 824-0984 | Top Cap, Quad System (D50, SCFD50) |
| * | 824-1125 | Top Cap (D50/D20) |
| 21 | 106-1742SP | Flue Box Assembly |
| * | 823-3634 | Flue Cap Assembly (2-battery) |
| * | 200-2872 | Shield, Flue Heat |
| * | 200-1343 | Front, Flue Box |
| * | 200-1350 | Rear, Flue Box |
| * | 200-3651 | Deflector, Flue |
| 22 | 823-3521 | Flue Cap, D50/CFD & 15MC (Single) |
| 23 | 106-1754SP | Door Assembly (D50) |
| * | 210-2869 | Panel, Outer Door |

* Not illustrated.

**DECATHLON SERIES GAS FRYERS
CHAPTER 2: PARTS LIST**

2.1.2 Decathlon D50 Primary Components (cont.)

| ITEM | PART # | COMPONENT |
|------|------------|---|
| * | 200-1379 | Panel, Inner Door |
| * | 106-4727 | Door Assembly, Left (SCFD50) |
| * | 106-4728 | Door Assembly, Right (SCFD50) |
| * | 210-8946 | Panel, Outer Door |
| * | 201-8945 | Panel, Inner Door, Left |
| * | 202-8945 | Panel, Inner Door, Right |
| * | 810-0180 | Handle, Chrome, Door |
| * | 809-0918 | Screw, 10-24 x 1/2" Slotted Head (use with 810-2105) |
| * | 809-0191 | Washer, 1/4" Spring-lock (use with 810-2105) |
| * | 200-1301 | Pin, Door, Long (D50) |
| * | 210-9889 | Pin, Door (SCFD50) |
| * | 810-0066 | Magnetic Catch, Door (D50) |
| * | 810-1105 | Magnetic Catch, Door (SCFD50) |
| 24 | 803-0271 | Basket, Twin |
| * | 803-0099 | Basket, Full |
| 25 | 803-0277 | Grid Assembly, Fine Mesh |
| 26 | 210-1595 | Hanger, Basket, Single System, (attaches to flue) |
| * | 210-3131 | Hanger, Basket, Double System (attaches to flue) |
| 27 | 810-0356 | Caster, Plate-mount, 5-inch without Brake |
| * | 810-2281 | Caster, Plate-mount, 5-inch with Brake ("Tile Safe" Cracker Barrel) |
| * | 810-2406 | Caster, Single Stud-mount, 5-inch without Brake |
| 28 | 810-0357 | Caster, Plate-mount, 5-inch with Brake |
| * | 810-2280 | Caster, Adj. Swivel, 3-inch with Brake ("Tile Safe" Cracker Barrel) |
| * | 810-2405 | Caster, Single Stud-mount, 5-inch with Brake |
| * | 826-1389 | Screw, 1/4-20 x 3/4" Hex Head (for plate-mount casters, qty: 10) |
| 29 | 812-1226SP | Drain Nipple, Extended 1 1/4" Drain |
| * | 812-1717 | Drain Nipple, Extended 1 1/2" Drain |
| 30 | 106-0913SP | Cordset, 10' Power |
| 31 | 210-2804 | Cover, Outlet Duct |
| 32 | 200-1674 | Back Panel, Lower (D50/CFD50) |
| 33 | 810-2411 | Leg, Single Bolt Mount (black) |
| * | 806-3811 | Leg Package, 4 Bolt Mount (4 per set) |
| 34 | 823-3248 | Leg Support Assembly |
| 35 | 200-1329 | Burner Mounting Bracket |
| 36 | 823-4075 | Hanger, Basket, Single with 6" Splash Guard |
| * | 823-3710 | Hanger, Basket, Double System (UFF) With 6" Splash Guard |

* Not illustrated.

2.1.3 Decathlon D60 Primary Components

| ITEM | PART # | COMPONENT |
|------|----------|--|
| 1 | 826-2229 | Frypot - S/S, 1/2" Drain (D60, CFD60, SCFD60) |
| * | 826-1802 | Frypot - S/S, 1 1/4" Drain <u>Non-Filtration</u> |
| * | 826-1826 | Frypot - S/S, Cascade Filter |
| * | 812-1666 | Coupling, Thermostat Entry |
| * | 813-0036 | Collar, Thermostat |
| * | 210-1650 | Deflector, Oil Return |
| * | 812-1501 | Nipple, 1 1/2" NPT x 1 NPT |
| 2 | 810-2072 | Gas Manifold (weld assembly) |
| 3 | 810-2048 | Orifice, Natural Gas #39 2.53 mm (non-CE) |

* Not illustrated.

**DECATHLON SERIES GAS FRYERS
CHAPTER 2: PARTS LIST**

2.1.3 Decathlon D60 Primary Components (cont.)

| ITEM | PART # | COMPONENT |
|------|----------|--|
| * | 810-2059 | Orifice, LP Gas #53 1.51 mm (CE and non-CE) |
| * | 810-2060 | Orifice, Nat. Gas/G20/G25 (CE only) |
| 4 | 810-2032 | Pilot Burner, Natural/G20/25 Gas (primary and trailing, 120V) |
| * | 810-2155 | Pilot Burner, LP/G31 Gas (primary and trailing) |
| * | 812-1674 | Pilot Burner, Mod. Natural Gas (electronic ignition) |
| * | 809-0766 | Nut, Keps 10-32 SS Hex (primary and trailing) |
| * | 809-0845 | Screw, 10-32 x $\frac{3}{8}$ " Hex Slotted Head (primary and trailing) |
| * | 810-0705 | Tube, Pilot Gas Supply, $\frac{1}{4}$ " x 23" (one-piece gasline) |
| * | 810-0703 | Tube, Pilot Gas Supply, $\frac{1}{4}$ " x 17 $\frac{1}{2}$ " (one-piece gasline) |
| * | 810-2138 | Valve, Trailing Pilot, Adjustable (trailing pilot only) |
| 5 | 200-1314 | Bracket, Manifold Support |
| * | 200-1615 | Bracket, Manifold Support (right or left) |
| 6 | 210-8387 | Diffuser Assembly |
| 7 | ▶▶▶ | See Drain Manifold Components, Section 2.5 |
| 8 | 810-2151 | Burner, Left Side |
| 9 | 810-2149 | Burner, Center |
| 10 | 810-2150 | Burner, Right Side |
| 11 | 200-1324 | Heat Shield, Lower (D60) |
| * | 200-1363 | Heat Shield, Lower (SCFD60) |
| * | 824-0970 | Heat Shield, Vessel (SCFD60) |
| * | 812-0211 | Insulation, Kaowool Blanket, .5" x 7.5" x 17.5" |
| * | 824-0969 | Support, Burner |
| 12 | 807-3552 | Gas Valve, Natural Gas, Electronic Ignition, 24 VAC ($\frac{3}{4}$ " in, $\frac{1}{2}$ " out) |
| * | 807-3628 | Gas Valve, LP Gas, Electronic Ignition, 24 VAC |
| * | 807-3294 | Gas Valve, Natural Gas, Constant Pilot, 24 VAC |
| * | 807-3295 | Gas Valve, LP Gas, Constant Pilot, 24 VAC |
| * | 810-2156 | Gas Valve, Natural Gas, 120 VAC |
| * | 810-2323 | Gas Valve, LP Gas, 120 VAC |
| * | 807-2091 | Gas Valve, G20/G25 Gas, 24 VAC (CE only) |
| * | 807-2127 | Gas Valve, G31 Gas, 24 VAC (CE only) |
| * | 810-0691 | Vent Tube |
| * | 823-3347 | Frame, Slide Base (SCFD60) |
| 13 | 200-2493 | Channel, Rear and Front (D60) |
| * | 200-3219 | Channel, Rear and Front (SCFD60) |
| * | 200-1198 | Channel, Base (Single) |
| * | 200-1463 | Channel, Base (Double) |
| * | 200-1393 | Channel, Lower Joiner (SCFD60) |
| 14 | 200-1675 | Lower Hinge Bracket (previous production D60) |
| * | 823-5346 | Hinge, Lower Left (current production D60, SCFD60) |
| * | 823-5347 | Hinge, Lower Right (current production D60, SCFD60) |
| * | 823-5348 | Hinge, Upper Left (current production D60, SCFD60) |
| * | 823-5349 | Hinge, Upper Right (current production D60, SCFD60) |
| 15 | 211-2532 | Side Panel, Left Side (unit exterior; D60) |
| 16 | 212-2532 | Side Panel, Right Side (unit exterior; D60) |
| * | 211-4570 | Side Panel, Left Side (unit exterior; SCFD60) |
| * | 212-4570 | Side Panel, Right Side (unit exterior; SCFD60) |
| * | 201-4775 | Side Panel, Left Side with Hole (unit interior) |
| * | 202-4775 | Side Panel, Right Side with Hole (unit interior) |

* Not illustrated.

**DECATHLON SERIES GAS FRYERS
CHAPTER 2: PARTS LIST**

2.1.3 Decathlon D60 Primary Components (cont.)

| ITEM | PART # | COMPONENT |
|------|------------|---|
| * | 201-1245 | Panel, Inner Left (divider located over filter unit) |
| * | 202-1245 | Panel, Inner Right (divider located over filter unit) |
| 17 | 824-0951 | Wireway, Control Panel (D60) |
| * | 824-1195 | Wireway, Control Panel (SCFD60) |
| 18 | ▶▶▶ | See Control Panel Options, Joiner Strips, and Accessories, Section 2.2 |
| 19 | ▶▶▶ | See Optional Components, Section 2.3 |
| 20 | 824-0987 | Top Cap (Single) |
| * | 824-0937 | Top Cap (2-battery) |
| * | 106-1258 | Flue Assembly |
| * | 809-0997 | Washer, 1/2 SAE "N" S/S |
| * | 809-0169 | Screw, #12 x 3/4" Hex Washer Slotted Head |
| * | 809-0428 | Screw, 1/4-20 x 1/2" Hex Head |
| * | 809-0417 | Nut, Flange 1/4-20 Serrated |
| 21 | 106-0997 | Flue Box Assembly |
| * | 200-1339 | Front, Flue Box |
| * | 200-1773 | Back, Flue Box |
| * | 200-1325 | Shield, Flue Box |
| * | 809-0167 | Screw, Sheet Metal 10 A x 5/8 B |
| * | 200-3649 | Deflector, Flue |
| 22 | 106-1703SP | Flue Cap (Single) |
| * | 823-3516 | Flue Cap (2-battery) |
| 23 | 106-2898SP | Door Assembly, with Liner (D60) |
| * | 200-1185 | Panel, Door, Inner |
| * | 210-1424 | Panel, Door, Outer |
| * | 106-4721 | Door Assembly, Left (SCFD60) |
| * | 200-4794 | Panel, Door, Inner |
| * | 211-8935 | Panel, Door, Outer |
| * | 106-4722 | Door Assembly, Right (SCFD60) |
| * | 200-4794 | Panel, Door, Inner |
| * | 212-8935 | Panel, Door, Outer |
| * | 810-0180 | Handle, Door, Chrome |
| * | 809-0918 | Screw, 10-24 x 1/2" Slotted Head (use with 810-2105) |
| * | 809-0191 | Washer, 1/4" Spring-lock (use with 810-2105) |
| * | 200-1301 | Pin, Door (D60) |
| * | 210-9889 | Pin, Door (SCFD60) |
| * | 810-0066 | Magnetic Catch/Plate, Door (D60) |
| * | 810-1105 | Magnetic Catch/Plate, Door (SCFD60) |
| 24 | 803-0304 | Fry Basket, 6 x 8 3/4" x 16 3/4" |
| 25 | 803-0149 | Grid Assembly, Mesh |
| * | 810-2235 | Grid Assembly, Rack |
| 26 | 210-2737SP | Basket Hanger, Single, no Splash Guard |
| * | 823-3349 | Basket Hanger, Double, Tall |
| * | 823-4780 | Basket Hanger, Chili's Single System, 6" Splash Guard |
| * | 823-4999 | Basket Hanger, Chili's Double System, 6" Splash Guard |
| 27 | 810-0356 | Caster, Plate-mount 5" without Brake |
| * | 810-2406 | Caster, Single Stud-mount 5" without Brake |
| 28 | 810-0357 | Caster, Plate-mount 5" with Brake |
| * | 810-2405 | Caster, Single Stud Mount 5" with Brake |
| * | 826-1389 | Screw, 1/4-20 x 3/4" Hex Head (for plate-mount casters, qty: 10) |

* Not illustrated.

**DECATHLON SERIES GAS FRYERS
CHAPTER 2: PARTS LIST**

2.1.3 Decathlon D60 Primary Components (cont.)

| ITEM | PART # | COMPONENT |
|------|------------|---------------------------------------|
| 29 | 812-1226SP | Drain Nipple, Extended, 1 ¼" |
| * | 812-1717SP | Drain Nipple, Extended, 1 ½" |
| 30 | 106-0913SP | Cordset, 10' Power |
| 31 | 210-2804 | Cover, Outlet Duct |
| 32 | 200-1327 | Back Panel, Lower |
| * | 200-1213 | Back Panel, Upper |
| 33 | 810-2411 | Leg, Single Bolt Mount (black) |
| * | 806-3811 | Leg Package, 4 Bolt Mount (4 per set) |
| 34 | 823-3248 | Leg Support Assembly |
| 35 | 200-2065 | Bracket, Burner Mounting |

* Not illustrated.

2.1.4 Decathlon FPD65 Primary Components

| ITEM | PART # | COMPONENT |
|------|------------|---|
| * | 200-2308 | Post, Door (SCFD60) |
| * | 201-1182 | Gusset, Side Panel Left (SCFD60) |
| * | 202-1182 | Gusset, Side Panel Right (SCFD60) |
| * | 200-1611 | Base (SCFD60) |
| * | 210-2804 | Duct, Door Access (SCFD60) |
| * | 200-2713 | Plate, Suction Manifold (SCFD60) |
| * | 210-1180 | Insert, Suction Manifold (SCFD60) |
| * | 823-3948SP | Frypot - S/S |
| * | 812-1666 | Coupling, Thermostat Entry |
| * | 813-0036 | Collar, Thermostat |
| * | 210-1650 | Deflector, Oil Return |
| * | 812-1501 | Nipple, 1½" NPT x 1 NPT |
| 2 | 810-2072 | Gas Manifold (weld assembly) |
| 3 | 810-2048 | Orifice, Natural Gas #39 2.53 mm (non-CE) |
| * | 810-2059 | Orifice, LP Gas #53 1.51 mm (CE and non-CE) |
| * | 810-2497 | Orifice, Butane Gas #55 1.32mm |
| * | 810-0710 | Orifice, LP Gas #54 1.4mm |
| * | 810-2050 | Orifice, Natural Gas #44 2.18mm |
| * | 810-2060 | Orifice, Natural/G20/G25 Gas #42 (CE only) |
| 4 | 810-2032 | Pilot Burner, Natural/G20/25 Gas (primary and trailing, 120V) |
| * | 810-2155 | Pilot Burner, LP/G31 Gas (primary and trailing) |
| * | 812-1674 | Pilot Burner, Mod. Natural Gas (electronic ignition) |
| * | 809-0766 | Nut, Keps 10-32 SS Hex (primary and trailing) |
| * | 809-0845 | Screw, 10-32 x 3/8" Hex Slotted Head (primary and trailing) |
| * | 810-0705 | Tube, Pilot Gas Supply, ¼" x 23" (one-piece gasline) |
| * | 810-0703 | Tube, Pilot Gas Supply, ¼" x 17½" (one-piece gasline) |
| * | 810-2138 | Valve, Trailing Pilot, Adjustable (trailing pilot only) |
| 5 | 200-1314 | Bracket, Manifold Support |
| * | 200-1615 | Bracket, Manifold Support (right or left) |
| 6 | 210-5177 | Diffuser Assembly |
| 7 | ▶▶▶ | See Drain Manifold Components, Section 2.5 |
| 8 | 810-2151 | Burner, Left Side |

* Not illustrated.

**DECATHLON SERIES GAS FRYERS
CHAPTER 2: PARTS LIST**

2.1.4 Decathlon FPD65 Primary Components (cont.)

| ITEM | PART # | COMPONENT |
|------|------------|---|
| 9 | 810-2149 | Burner, Center |
| 10 | 810-2150 | Burner, Right Side |
| 11 | 200-1363 | Heat Shield, Lower |
| * | 824-0970 | Heat Shield, Vessel |
| * | 824-0969 | Support, Burner |
| 12 | 807-3552 | Gas Valve, Natural Gas, Electronic Ignition, 24 VAC |
| * | 807-3628 | Gas Valve, LP Gas, Electronic Ignition, 24 VAC |
| * | 807-3294 | Gas Valve, Natural Gas, Constant Pilot, 24 VAC |
| * | 807-3295 | Gas Valve, LP Gas, Constant Pilot, 24 VAC |
| * | 810-2156 | Gas Valve, Natural Gas, 120 VAC |
| * | 810-2323 | Gas Valve, LP Gas, 120 VAC |
| * | 807-2091 | Gas Valve, G20/G25 Gas, 24 VAC (CE only) |
| * | 807-2127 | Gas Valve, G31 Gas, 24 VAC (CE only) |
| * | 810-0691 | Vent Tube |
| * | 823-3347 | Frame, Slide Base |
| 13 | 200-3219 | Channel, Rear and Front |
| * | 200-1198 | Channel, Base |
| * | 200-1393 | Channel, Lower Joiner |
| 14 | 200-9886 | Lower Hinge Bracket |
| * | 823-5346 | Hinge, Lower Left |
| * | 823-5347 | Hinge, Lower Right |
| * | 823-5348 | Hinge, Upper Left |
| * | 823-5349 | Hinge, Upper Right |
| 15 | 211-4570 | Side Panel, Left Side (unit exterior) |
| 16 | 212-4570 | Side Panel, Right Side (unit exterior) |
| * | 201-4775 | Side Panel, Left Side with Hole (unit interior) |
| * | 202-4775 | Side Panel, Right Side with Hole (unit interior) |
| * | 201-4237 | Panel, Inner Left (divider located over filter unit) |
| * | 202-4237 | Panel, Inner Right (divider located over filter unit) |
| 17 | 824-1195 | Wireway, Control Panel |
| 18 | ▶▶▶ | See Control Panel Options, Joiner Strips, and Accessories, Section 2.2 |
| 19 | ▶▶▶ | See Optional Components, Section 2.3 |
| 20 | 824-0987 | Top Cap |
| * | 824-0937 | Top Cap, Two-vat |
| * | 106-2634SP | Flue Assembly |
| * | 809-0997 | Washer, 1/2 SAE "N" S/S |
| * | 809-0169 | Screw, #12 x 3/4" Hex Washer Slotted Head |
| * | 809-0417 | Nut, Flange 1/4-20 Serrated |
| * | 809-0428 | Screw, 1/4-20 x 1/2" Hex Head |
| 21 | | Flue Box Assembly |
| * | 200-1339 | Front, Flue Box |
| * | 200-1773 | Back, Flue Box |
| * | 200-1325 | Shield, Flue Box |
| * | 809-0167 | Screw, Sheet Metal 10 A x 5/8 B |
| * | 200-3649 | Deflector, Flue (use screws 809-0437) |
| * | 210-6525 | Deflector, Flue, Chili's (use screws 809-0437) |
| 22 | 106-1703SP | Flue Cap, Single System |
| * | 823-3516 | Flue Cap, Double System |
| 23 | 106-2898SP | Door Assembly, with Liner |

* Not illustrated.

**DECATHLON SERIES GAS FRYERS
CHAPTER 2: PARTS LIST**

2.1.4 Decathlon FPD65 Primary Components (cont.)

| ITEM | PART # | COMPONENT |
|------|------------|--|
| * | 200-4794 | Panel, Door, Inner |
| * | 210-4792 | Panel, Door, Outer |
| * | 106-4721 | Door Assembly, Left |
| * | 200-4794 | Panel, Door, Inner |
| * | 211-8935 | Panel, Door, Outer |
| * | 106-4722 | Door Assembly, Right |
| * | 200-4794 | Panel, Door, Inner |
| * | 212-8935 | Panel, Door, Outer |
| * | 810-0180 | Handle, Door, Chrome |
| * | 809-0918 | Screw, 10-24 x 1/2" Slotted Head (use with 810-2105) |
| * | 809-0191 | Washer, 1/4" Spring-lock (use with 810-2105) |
| * | 200-1301 | Pin, Door, 20" long |
| * | 810-1105 | Magnetic Catch/Plate, Door (offset) |
| 24 | 803-0304 | Fry Basket, 6 x 8 3/4" x 16 3/4" |
| 25 | 803-0149 | Grid Assembly, Mesh |
| * | 810-2235 | Grid Assembly, Rack |
| 26 | 210-2737SP | Basket Hanger, Single System, no Splash Guard |
| * | 823-4780 | Basket Hanger, Chili's Single System, 6" Splash Guard |
| * | 823-4999 | Basket Hanger, Chili's Double System, 6" Splash Guard |
| * | 823-4767 | Splash Guard |
| 27 | 810-0356 | Caster, Plate-mount 5" without Brake |
| * | 810-2406 | Caster, Single Stud-mount 5" without Brake |
| 28 | 810-0357 | Caster, Plate-mount 5" with Brake |
| * | 810-2405 | Caster, Single Stud Mount 5" with Brake |
| * | 826-1389 | Screw, 1/4-20 x 3/4" Hex Head (for plate-mount casters, qty: 10) |
| 29 | 812-1226SP | Drain Nipple, Extended |
| 30 | 106-0913SP | Cordset, 10' Power |
| 31 | 210-2804 | Cover, Outlet Duct |
| 32 | 200-1213 | Upper Structural Back |
| * | 200-1327 | Lower Structural Back |
| 33 | 810-2411 | Leg, Single Bolt Mount (black) |
| * | 806-3811 | Leg Package, 4 Bolt Mount (4 per set) |
| 34 | 823-3248 | Leg Support Assembly |
| 35 | 200-2065 | Bracket, Burner Mounting |
| * | 200-2308 | Post, Door |
| * | 201-1182 | Gusset, Side Panel Left |
| * | 202-1182 | Gusset, Side Panel Right |
| * | 200-1611 | Base |
| * | 210-2804 | Duct, Door Access |
| * | 200-2713 | Plate, Suction Manifold |
| * | 210-1180 | Insert, Suction Manifold |

* Not illustrated.

**DECATHLON SERIES GAS FRYERS
CHAPTER 2: PARTS LIST**

2.1.5 Decathlon D80 Primary Components

| ITEM | PART # | COMPONENT |
|------|------------|--|
| * | 823-3494SP | Frypot - S/S 1 $\frac{1}{4}$ " Drain (D80, after 10/99) |
| * | 826-1891 | Frypot - S/S 1 $\frac{1}{4}$ " Drain (D80, before 10/99) |
| * | 823-3396SP | Frypot - S/S 1 $\frac{1}{2}$ " Drain (D80, SCFD80) |
| 2 | 810-2072 | Gas Manifold (welded assembly) |
| 3 | 810-2049 | Orifice, Natural Gas #43 2.26 mm (non-CE D80G) |
| * | 810-0710 | Orifice, LP Gas #54 1.40 mm (non-CE D80G) |
| * | 810-2161 | Orifice, Natural Gas #38 2.58 mm (non-CE D80GHP) |
| * | 810-2063 | Orifice, LP Gas #52 1.61 mm (SCFD80G) |
| * | 810-2060 | Orifice, G20/G25 Gas (CE only) |
| * | 810-2059 | Orifice, G31 (CE only) |
| 4 | 810-2032 | Pilot Burner, Natural/G20/25 Gas (primary and trailing) |
| * | 810-2155 | Pilot Burner, LP/G31 Gas (primary and trailing) |
| * | 812-1674 | Pilot Burner, Mod. Natural Gas (electronic ignition) |
| * | 809-0845 | Screw, 10-32 x $\frac{3}{8}$ " Hex Slotted Head (primary and trailing) |
| * | 812-1674 | Tube, Pilot Gas Supply, $\frac{1}{4}$ " x 23" (one-piece gasline) |
| * | 810-0705 | Tube, Pilot Gas Supply, $\frac{1}{4}$ " x 20" (one-piece gasline) |
| * | 810-0703 | Tube, Pilot Gas Supply, $\frac{1}{4}$ " x 17 $\frac{3}{4}$ " (one-piece gasline) |
| * | 810-2138 | Valve, Trailing Pilot, Adjustable (trailing pilot only) |
| 5 | 200-1314 | Manifold Support Bracket |
| * | 200-1615 | Manifold Support Bracket (right or left) |
| 6 | 210-5197 | Diffuser Assembly |
| 7 | ▶▶▶ | See Drain Manifold Components, Section 2.5 |
| 8 | 810-2151 | Burner, Left Side |
| 9 | 810-2149 | Burner, Center |
| 10 | 810-2150 | Burner, Right Side |
| 11 | 200-2707 | Heat Shield |
| * | 200-1363 | Lower Heat Shield |
| 12 | 807-3552 | Gas Valve, Natural Gas Electronic Ignition, 24 VAC |
| * | 807-3628 | Gas Valve, LP Gas Electronic Ignition, 24 VAC |
| * | 810-2156 | Gas Valve, Natural Gas, 120 VAC |
| * | 810-2323 | Gas Valve, LP Gas, 120 VAC |
| * | 807-2091 | Gas Valve, G20/25 Gas, 24 VAC (CE only) |
| * | 807-2127 | Gas Valve, G31 Gas, 24 VAC (CE only) |
| * | 810-0691 | Vent Tube |
| 13 | 200-2686 | Channel, Front and Rear |
| 14 | 200-1675 | Lower Hinge Bracket |
| * | 823-5346 | Hinge, Lower Left |
| * | 823-5347 | Hinge, Lower Right |
| * | 823-5348 | Hinge, Upper Left |
| * | 823-5349 | Hinge, Upper Right |
| 15 | 211-2532 | Side Panel, Left Side (D80) |
| 16 | 212-2532 | Side Panel, Right Side (D80) |
| * | 201-4775 | Side Panel, Left Side with hole (SCFD80) |
| * | 202-4775 | Side Panel, Right Side with hole (SCFD80) |
| * | 211-4570 | Side Panel, Left Side without hole (SCFD80) |
| * | 212-4570 | Side Panel, Right Side without hole (SCFD80) |
| 17 | 824-0954 | Wireway, Control Panel |
| 18 | 210-2778 | Control Panel, One Hole (D80) |

* Not illustrated.

**DECATHLON SERIES GAS FRYERS
CHAPTER 2: PARTS LIST**

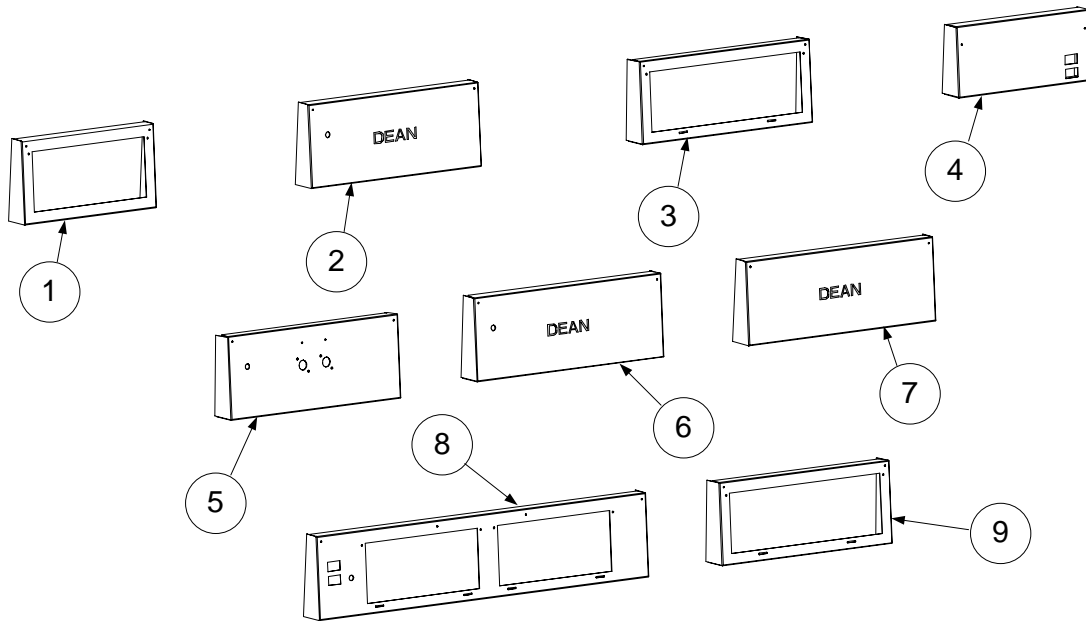
2.1.5 Decathlon D80 Primary Components (cont.)

| ITEM | PART # | COMPONENT |
|------|------------|--|
| * | 210-2777 | Control Panel, Two Holes (D80) |
| * | 210-5061 | Control Panel, One Hole (SCFD80) |
| * | 210-5910 | Control Panel, Two Holes (SCFD80) |
| 19 | ▶▶▶ | See Optional Components, Section 2.3 |
| 20 | 824-0986 | Top Cap (D80/CFD80) |
| * | 824-1013 | Top Cap, 2-battery (SCFD80) |
| * | 824-1007 | Top Cap, 3-battery (SCFD80) |
| * | 824-1006 | Top Cap, 4-battery (SCFD80) |
| 21 | 823-3659 | Flue Box Assembly (D280, SCFD280) |
| * | 106-1442SP | Flue Box Assembly (D380/480, CFD80, SCFD380/480) |
| * | 200-1347 | Front, Flue Box |
| * | 200-1349 | Back, Flue Box |
| * | 200-1316 | Shield, Flue Box |
| * | 200-3645 | Deflector, Flue |
| 22 | 823-3512 | Flue Cap (D80) |
| * | 823-3659 | Flue Cap (SCFD80) |
| 23 | 106-1698SP | Door Assembly |
| * | 210-1151 | Panel, Outer Door |
| * | 200-2688 | Panel, Inner Door |
| * | 810-0180 | Door Handle, Chrome |
| * | 809-0918 | Screw, 10-24 x 1/2" Slotted Head (use with 810-2105) |
| * | 809-0191 | Washer, 1/4" Spring-lock (use with 810-2105) |
| * | 200-1301 | Pin, Door, Long (D80) |
| * | 210-9889 | Pin, Door (SCFD80) |
| * | 810-0066 | Magnetic Catch, Door (D80) |
| * | 810-1105 | Magnetic Catch, Door (SCFD80) |
| 24 | 803-0304 | Fry Basket, 6 x 8 ³ / ₄ " x 16 ³ / ₄ " |
| 25 | 810-2122 | Grid Assembly (mesh-style) |
| * | 803-0300 | Grid Assembly (rack-style) |
| 26 | 200-3120 | Hanger, Basket, Single System, M/S (D80) |
| * | 210-2887 | Hanger, Basket, Single System, S/S, no splash guard (SCFD80) |
| * | 200-3119 | Hanger, Basket, Double System, M/S (D80) |
| * | 210-3117 | Hanger, Basket, Double System, S/S (SCFD80) |
| 27 | 810-0356 | Caster, Plate-mount, 5-inch without Brake |
| * | 810-2406 | Caster, Single Stud-mount, 5-inch without Brake |
| 28 | 810-0357 | Caster, Plate-mount, 5-inch with Brake |
| * | 810-2405 | Caster, Single Stud-mount, 5-inch with Brake |
| * | 826-1389 | Screw, 1/4-20 x 3/4" Hex Head (for plate-mount casters, qty: 10) |
| 29 | 812-1226SP | Drain Nipple, Extended, 1 1/4" |
| * | 812-1717SP | Drain Nipple, Extended, 1 1/2" |
| 30 | 106-0913SP | Cordset, 10' Power |
| 31 | 210-2804 | Cover, Outlet Duct |
| 32 | 200-2683 | Back, Upper Cabinet |
| * | 200-2982 | Back, Lower Cabinet |
| 33 | 810-2411 | Leg, Single Bolt Mount (black) |
| * | 806-3811 | Leg Package, 4 Bolt Mount (4 per set) |
| 34 | 823-3248 | Leg Support Assembly |
| 35 | 200-2734 | Burner Mounting Bracket |
| 36 | 823-3649 | Hanger, Basket with 6" Splash Guard |

* Not illustrated.

DECATHLON SERIES GAS FRYERS CHAPTER 2: PARTS LIST

2.2 Control Panel Options, Joiner Strips, and Accessories



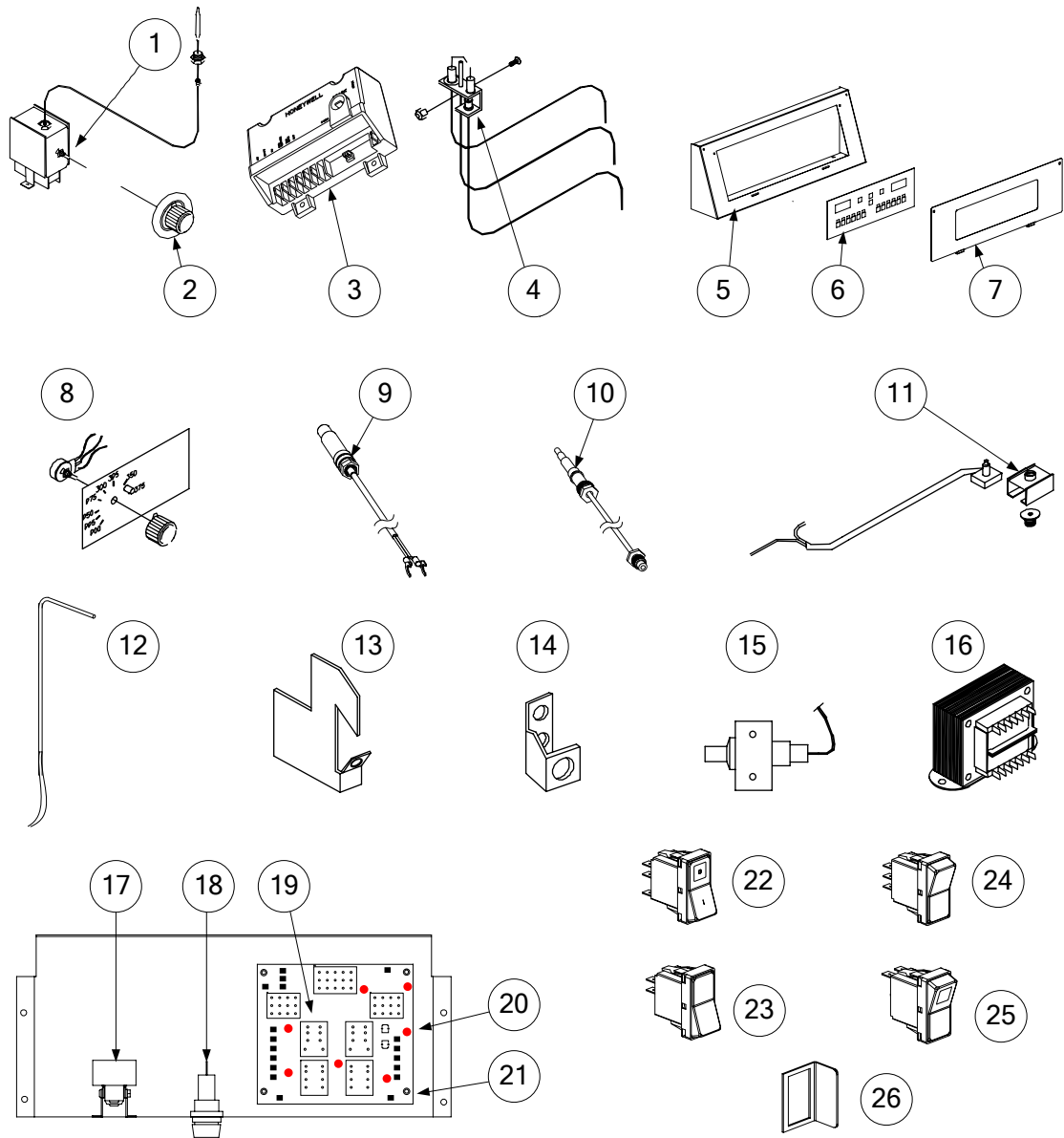
| ITEM | PART # | COMPONENT |
|-----------------------|------------|---|
| Control Panels | | |
| 1 | 210-3562 | Controller (D50) |
| 2 | 210-3021 | Solid, with Indicator Light (D60) |
| 3 | 210-6405 | Controller (D60, D65) |
| 4 | 210-2051 | McDonald's™ (D50) |
| 5 | 210-4672 | Basket Lift, with Thermatron Controller (D60) |
| 6 | 210-5061 | Solid, with Indicator Light (D80) |
| 7 | 210-5910 | Solid, for Matching Cabinet (D80) |
| 8 | 210-3910 | Controller (15MC/50/20) |
| 9 | 210-1256 | Controller (SCFD60/150) |
| Joiner Strips | | |
| | 210-4847 | D50/D50 |
| | 211-4816 | 2424/D50 |
| | 212-4816 | D50/2424 |
| | 210-3327 | D20/D50 |
| | 210-3017 | DD50/D60/D80 |
| | 210-1679 | SM/D220 |
| Accessories | | |
| * | 823-3938 | Crumb Scoop, Split Pot |
| * | 106-2631SP | Sediment Tray |
| * | 823-3947 | Chicken Crisper, D60 |

* Not illustrated.

DECATHLON SERIES GAS FRYERS

CHAPTER 2: PARTS LIST

2.3 Optional Components and Controllers



| ITEM | PART # | COMPONENT |
|------|----------|--|
| 1 | 826-2013 | Thermostat, Sunne |
| 2 | 810-2035 | Knob, Thermostat |
| 3 | 826-2117 | Spark Module, Domestic and CE (Rajah Connector, 807-3484) |
| * | 807-3484 | Rajah Connector (for Blue/Gray Honeywell module, 807-4037, no longer avail.) |
| 4 | 807-1311 | Pilot Assembly, Natural Gas with Electronic Ignition |
| * | 807-1553 | Pilot Assembly, LP Gas with Electronic Ignition |
| * | 807-1315 | Ignition Cable (for computer operated fryers) |
| * | 810-0705 | Tube, 1/4" x 20" One Piece Pilot Gas Supply |
| * | 807-1310 | Flame Sensor |

* Not illustrated.

**DECATHLON SERIES GAS FRYERS
CHAPTER 2: PARTS LIST**

2.3 Optional Components and Controllers (cont.)

| ITEM | PART # | COMPONENT |
|------|------------|---|
| * | 803-0278 | Brush, L-shaped |
| * | 803-0197 | Fryer's Friend |
| * | 803-0293 | Gloves |
| * | 106-1839SP | Pilot Assembly (w/computer and electronic ignition), Natural |
| * | 106-1128 | Pilot Assembly (w/computer and electronic ignition), LP |
| * | 106-1235 | Pilot Assembly (without computer), Natural |
| * | KIT0092 | Air Shutter Kit |
| 5 | 210-3562 | Control Panel, Computer (D50) |
| * | 210-1256 | Control Panel, Computer (D60) |
| * | 823-1800 | Control Panel, Computer (FPD65) |
| * | 210-1520 | Control Panel, Computer (D80) |
| 6 | 106-6609 | Computer, Compu-Fry III.5, Full-vat |
| * | 806-8305 | Computer, CM4-S |
| * | 806-8308 | Computer, CM4-S (FPD65) |
| * | 806-5139 | Computer, Remote |
| * | 806-4807 | Computer, Compu-Fry III.5, Dual-vat |
| * | 806-4803 | Cable Assembly, Compu-Fry to Interface Board |
| 7 | 823-3433 | Bezel Assembly, Control Panel |
| * | 910-7283 | Bezel Assembly, Control Panel (FPD65) |
| 8 | 106-0802SP | Face Plate/Potentiometer, 120 VAC Electronic Thermostat |
| * | 820-0135 | Face Plate, Electronic Thermostat |
| * | 106-0801 | Potentiometer, Electronic Thermostat (molex connector; with trim resistor) |
| * | 106-5809 | Potentiometer, Electronic Thermostat (molex connector; without trim resistor) |
| * | 816-0534 | Knob, Control, Electronic Thermostat |
| 9 | 807-3485 | Thermopile |
| * | 807-1026 | Sound Device |
| * | 806-4803 | Cable Assembly (Harness) |
| 10 | 812-1284 | Thermocouple (CE ONLY) |
| * | 807-3550 | Thermocouple |
| 11 | 106-1768SP | ECO Connector, Honeywell Valves Only (CE ONLY) |
| * | 810-2398 | ECO Connector, Robertshaw Valves Only (CE ONLY) |
| 12 | 106-5419SP | Probe Assembly, GO (D20, D50, D60, D80) |
| * | 106-1976 | Probe Assembly, Temperature, New Design, 4-pin (D60 & D80) |
| * | 106-1424 | Probe Assembly (RTD), Temperature (Dean computer) |
| * | 106-1261SP | Harness Assembly, GO Probe |
| * | 810-2164 | Spring, Space, Electronic Thermostat Probe |
| * | 210-1386 | Clamp, Electronic Thermostat Probe |
| 13 | 210-6564 | Bracket, Pilot Thermocouple |
| 14 | 810-2401 | Bracket, Thermopile |
| 15 | 810-1001 | Piezo Ignitor (trigger) |
| * | 200-1868 | Piezo Bracket |
| * | 807-3540 | Electrode, Piezo |
| 16 | 807-3551 | Transformer, Honeywell 120/24 VAC (threaded mounting/electronic ignition) |
| * | 807-0855 | Transformer, 120/12 VAC |
| * | 807-0800 | Transformer, 120/24 VAC |
| * | 807-1999 | Transformer, Dual CE (CE ONLY, 208-240/12-24V) |
| 17 | 807-3560 | High-limit Thermostat, Manual Reset 410° F (CE) |
| * | 807-3680 | High-limit Thermostat, Manual Reset 450° F (NON-CE, 1998-present) |
| * | 807-3559 | High-limit Thermostat, Manual Reset 435° F (pre-1998) |

* Not illustrated.

**DECATHLON SERIES GAS FRYERS
CHAPTER 2: PARTS LIST**

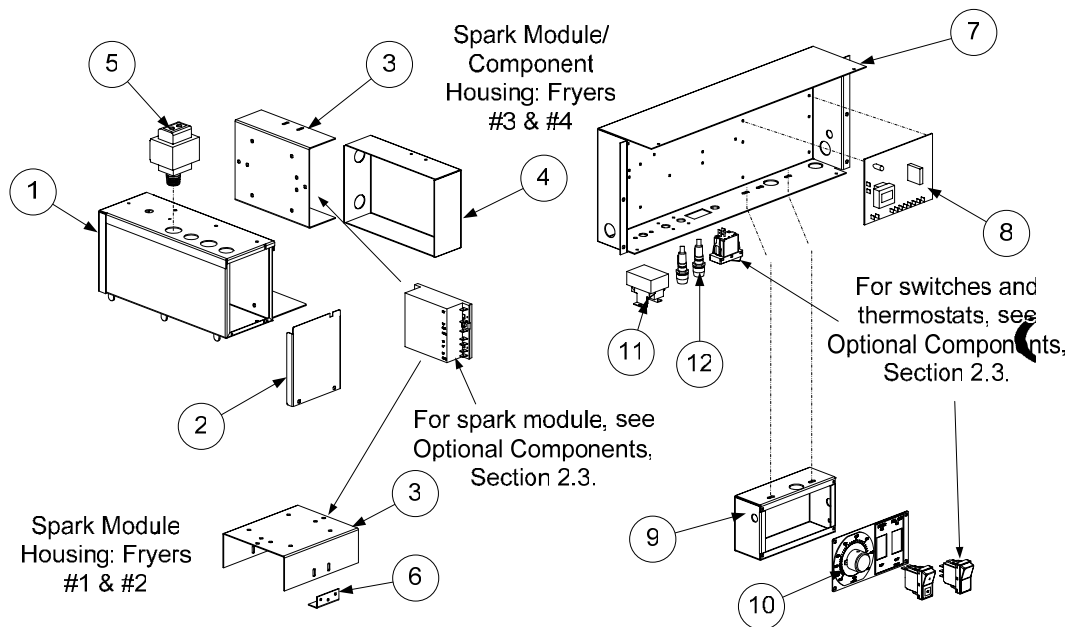
2.3 Optional Components and Controllers (cont.)

| ITEM | PART # | COMPONENT |
|------|----------|---|
| * | 810-2046 | Spring, Spacer, High-limit Capillary Bulb |
| * | 810-2047 | Spring, Spacer, Thermostat Capillary Bulb |
| * | 210-1433 | Clamp, Thermostat/High-limit Capillary Bulb |
| 18 | 807-1321 | Fuse Holder, Buss |
| * | 2747 | Fuse Holder, Slot-head, Safety (CE ONLY) |
| * | 807-3592 | Fuse 2A Slow-blow (230V systems) |
| * | 807-3750 | Fuse 5A (120V systems) |
| 19 | 106-6710 | Interface Board, Dean Computer Only |
| 20 | 807-0834 | Relay, 12VDC 15A 1PDT (basket lift) |
| 21 | 807-0833 | Relay, 12VDC 5A 1PDT (latching) |
| * | 807-4114 | Relay, 24VAC Coil, Reset |
| 22 | 807-3574 | Switch, Power (green lens) |
| 23 | 807-3580 | Switch, Rocker, Manual Filter Power |
| 24 | 807-3579 | Switch, Six-terminal Boil-out |
| 25 | 807-3576 | Switch, Fryer Reset (momentary) |
| * | 807-3578 | Switch, 3-position, ON-OFF-ON |
| * | 807-3582 | Indicator Light, Green |
| * | 807-3581 | Indicator Light, Red |
| * | 807-3611 | Pump Relay |
| * | 807-3578 | Socket, Pump Relay |
| * | 807-3575 | Switch Insert, Blank |
| 26 | 210-2786 | Switch Guard (for Items 22-25, optional) |

* Not illustrated.

DECATHLON SERIES GAS FRYERS CHAPTER 2: PARTS LIST

2.4 Transformers & Component Boxes; Multi-batteried Decathlons



| ITEM | PART | COMPONENT |
|------|------------|---|
| 1 | 823-3242 | Control Box (D50/CFD50/SCFD50) |
| * | 106-2691 | Control Box (FPD65) |
| 2 | 210-1364 | Plate, Face (for Item 1) |
| * | 210-2966 | Plate, Face (for Item 1, FPD65) |
| 3 | 200-1322 | Bracket, Spark Module |
| 4 | 200-1326 | Cover, Spark Module (Fryers 3 & 4) |
| 5 | 807-3551 | Transformer |
| 6 | 200-2307 | Bracket, Spark Module Attachment (Fryers 1 & 2) |
| 7 | 824-0961 | Wireway, Control Panel (D50) |
| * | 824-0951 | Wireway, Control Panel (D60) |
| * | 824-1195 | Wireway, Control Panel (SCFD models) |
| * | 824-1162 | Wireway, Control Panel (D80) |
| 8 | 826-2086 | Theratron Board, 115/230V |
| * | 106-3729 | Theratron Board, 24V, Melt Cycle |
| * | 826-2088 | Kit, Theratron, 24V |
| * | 826-2031 | Kit, Theratron, 115/220V |
| 9 | 200-3212 | Housing, Electronic Thermostat, Two Cut-outs |
| 10 | 210-3214 | Face Plate, Electronic Thermostat, Power/Boil-out |
| * | 807-3536 | Potentiometer, Electronic Thermostat (spade terminals; with trim resistor) |
| * | 106-0801 | Potentiometer, Electronic Thermostat (molex connector; with trim resistor) |
| * | 106-5809 | Potentiometer, Electronic Thermostat (molex connector; without trim resistor) |
| * | 816-0534 | Knob, Electronic Thermostat Potentiometer |
| 11 | 807-3680 | High-limit Thermostat, Manual Reset 450° F (non-CE only) |
| * | 807-3559 | High-limit Thermostat, Manual Reset 435° F |
| * | 807-3560 | High-limit Thermostat, Manual Reset 410° F (CE only) |
| * | 106-1131SP | Harness, Spark Module |
| * | 807-3592 | Fuse, 2A, Slow Blow |
| * | 807-3577 | Circuit Breaker, 7 amp |

* Not illustrated.

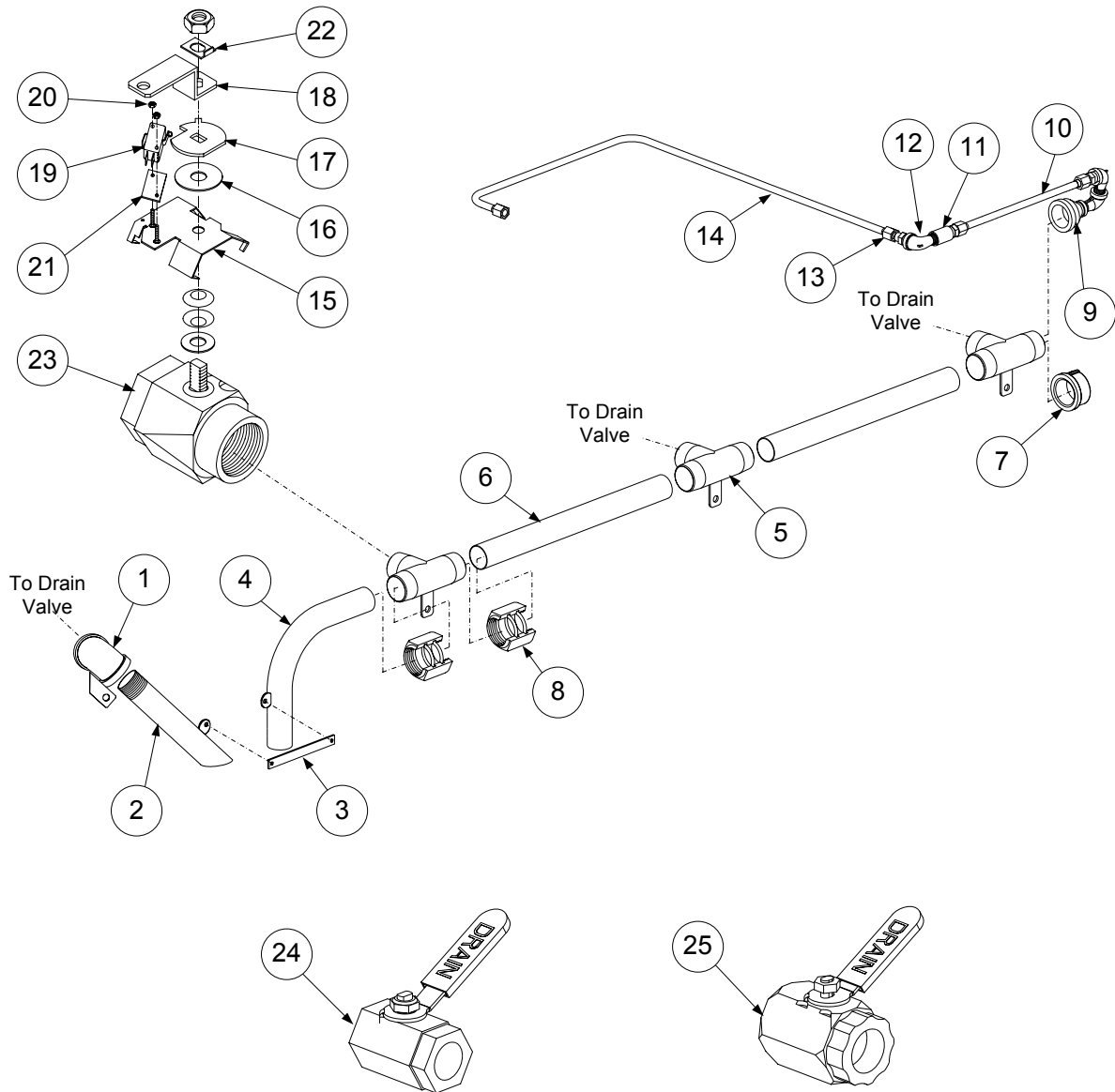
DECATHLON SERIES GAS FRYERS

CHAPTER 2: PARTS LIST

During the transition phase, some Decathlon series fryers were equipped with 3" round drain systems while others were equipped with 1.5" round drain systems. Compare the fryer in question with the illustrations on pages 2-18 to 2-29 to determine which system it uses.

2.5 Oil Drain Manifold Components

2.5.1 1.5" Oil Drain Manifold, Drain Flush, and Drain Valve Components



**DECATHLON SERIES GAS FRYERS
CHAPTER 2: PARTS LIST**

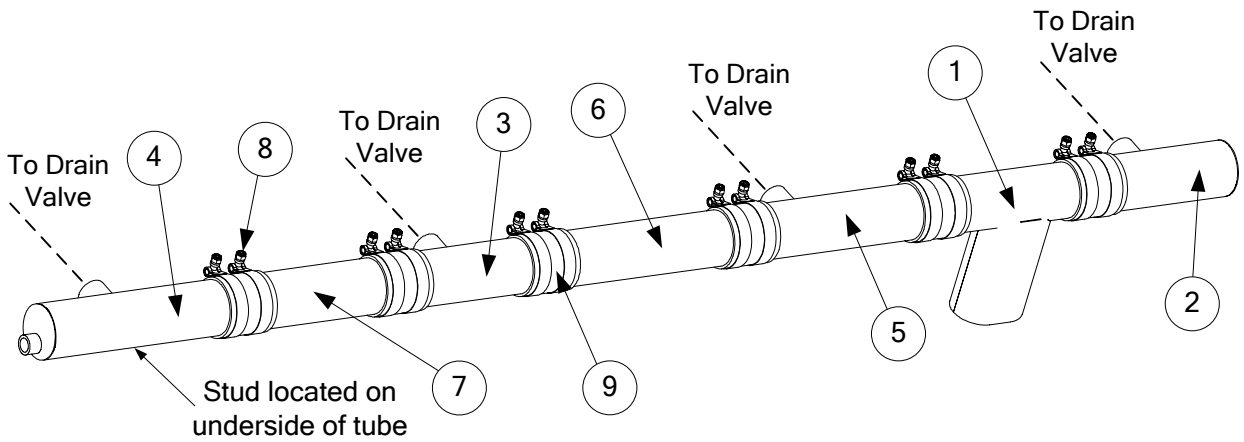
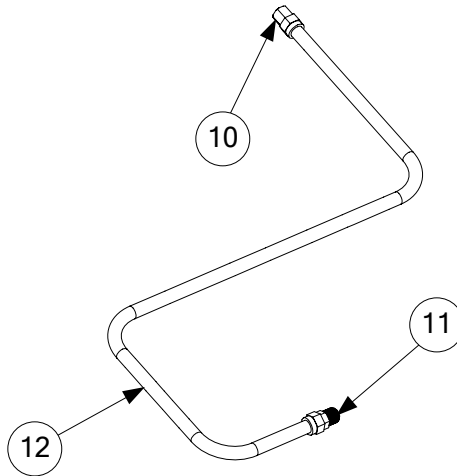
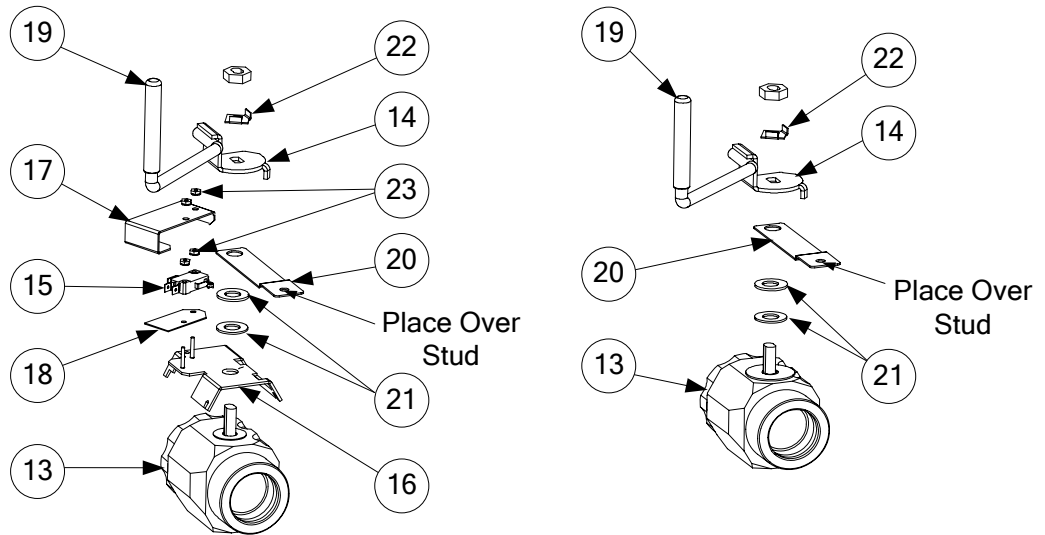
2.5.1 1.5" Oil Drain Manifold, Drain Flush, and Drain Valve Components (cont.)

| ITEM | PART # | COMPONENT |
|-------------------------------|----------|---|
| 1 | 823-3221 | Elbow with Bracket, Left |
| * | 823-3222 | Elbow with Bracket, Right |
| 2 | 823-5167 | Drain Pipe, Left Side |
| 3 | 210-2311 | Clamp, Center Drain Pipe |
| 4 | 823-4931 | Drain Pipe, Right Side |
| 5 | 813-0749 | Tee, 1½" NPT With Handle Bracket |
| 6 | 200-5621 | Drain Manifold Tube, 17" |
| * | 200-1827 | Drain Manifold Tube, 13" |
| 7 | 813-0659 | Pipe Cap, 1½" |
| * | 813-0391 | Nipple, 1 ¼" x Close |
| * | 813-0748 | Tee, 1 ½" NPT x 1 ¼" NPT (with handle bracket) |
| 8 | 809-0884 | Nut, Slip-joint 1½" |
| * | 816-0544 | O-ring, Slip-joint Nut |
| 9 | 813-0686 | Bell Reducer, 1½" x ½" NPT |
| 10 | 810-1057 | Flex Line, ⅝" x 13" |
| 11 | 813-0051 | Coupling, ½" NPT |
| 12 | 813-0165 | Elbow, Street ½" x ½" 90° |
| 13 | 810-1668 | Adapter, ⅝" O.D. x ½" Male (use with 810-1057 and 810-1069) |
| * | 810-1669 | Adapter, ⅝" O.D. x ½" Female (use with 810-1057 and 810-1069) |
| 14 | 810-1069 | Flex Line, ⅝" x 29½" |
| * | 806-6849 | Tilt Switch, Drain Valve |
| DRAIN VALVE COMPONENTS | | |
| 15 | 106-1401 | Bracket, Microswitch (optional on some units) |
| 16 | 200-1617 | Washer, Drain Valve (use without microswitch) |
| 17 | 210-2029 | Bracket, Microswitch Activator |
| 18 | 210-4727 | Handle (Actuator), Drain Valve, Round |
| * | 823-3405 | Handle (Actuator), Drain Valve, Flat |
| * | 823-3440 | Handle, Push/Pull Drain |
| * | 809-0885 | Washer, ⅜" x 1 x .083" |
| * | 809-0843 | Cotter Pin |
| * | 816-0547 | Cap, Red Vinyl for Handle |
| 19 | 807-2104 | Microswitch (optional on some units) |
| 20 | 809-0842 | Nut, Nylock #4-40 (microswitch to bracket) |
| 21 | 816-0220 | Insulation, Microswitch |
| 22 | 200-1257 | Retainer, Nut |
| 23 | 810-2127 | Drain Valve, 1½" Full Port (with washers & nut) |
| 24 | 810-2052 | Drain Valve, 1¼" (1" standard port) |
| * | 810-1338 | Drain Valve, 1" (D20 only) |
| * | 200-2371 | Handle, Valve Lever (for use with 810-1338 and 823-3440 only) |
| 25 | 810-2126 | Drain Valve, 1¼", Full Port |
| * | 810-1018 | Drain Valve, 1¼", Left |
| * | 210-2342 | Drain Extension, Left |
| * | 210-2343 | Drain Extension, Right |

* Not illustrated.

**DECATHLON SERIES GAS FRYERS
CHAPTER 2: PARTS LIST**

2.5.2 3" Oil Drain Manifold, Drain Flush, and Drain Valve Components



**DECATHLON SERIES GAS FRYERS
CHAPTER 2: PARTS LIST**

2.5.2 3" Oil Drain Manifold, Drain Flush, and Drain Valve Components (cont.)

| ITEM | PART # | COMPONENT |
|------|------------|---|
| 1 | 823-4712 | Tube, 3" Oval Dump |
| 2 | 823-4681 | Tube, 3" Right Drain (8.06" long, closed end) |
| 3 | 823-4682 | Tube, 3" Center Drain (8" long, open ends) |
| 4 | 823-4844 | Tube, 3" Left Drain (12.44" long, closed end) |
| 5 | 823-5188 | Tube, 3" Right Filter (10.38" long, open ends) |
| 6 | 200-6603 | Tube, 3" Joiner (11.5" long) |
| 7 | 200-9365 | Tube, 3" Joiner (8.63" long) |
| 8 | 809-0969 | Clamp, T-bolt |
| 9 | 816-0625 | Boot/Sleeve |
| * | 106-2568SP | Wash Down Hose Assembly |
| * | 106-1837 | Quick Disconnect, Female |
| * | 813-0699 | Quick Disconnect, Male |
| * | 810-1434 | Hose Assembly |
| * | 106-1454 | Nozzle Assembly, Hose with Handle |
| * | 106-1227 | Heater Strip 120V, 25W, 36" |
| | 106-1726 | Flush Oil Drain Line |
| 10 | 810-1669 | Adapter, Female $\frac{5}{8}$ " O.D. x $\frac{1}{2}$ " Long |
| 11 | 810-1668 | Adapter, Male $\frac{5}{8}$ " O.D. x $\frac{1}{2}$ " Long |
| 12 | 810-1056 | Flexline, $\frac{5}{8}$ " O.D. x 52.5" Long |
| | 106-3976 | Drain Valve Assembly, $1\frac{1}{2}$" without Microswitch |
| | 106-3977 | Drain Valve Assembly, $1\frac{1}{2}$" with Microswitch |
| 13 | 810-2783 | Drain Valve, $1\frac{1}{2}$ " Full Port with O-ring |
| 14 | 823-4734 | Handle, Drain Valve Rotating |
| 15 | 807-2104 | Microswitch, CE Micro-roller Lever |
| 16 | 106-1401 | Microswitch Bracket Assembly |
| 17 | 200-4402 | Guard, Drain Microswitch |
| 18 | 816-0220 | Insulation, RF Switch |
| 19 | 816-0547 | Cap, Red Vinyl for Handle |
| 20 | 200-6116 | Strap, $1\frac{1}{2}$ " (holds tube to valve via the stud) |
| 21 | 200-1617 | Washer, Drain Microswitch |
| 22 | 200-1257 | Retainer, Drain Valve |
| 23 | 826-1366 | Nut, 4-40 Keps Hex w/External Teeth (<i>pkg. of 25</i>) |
| * | 816-0630 | Cap, Vinyl (one per clamp, covers T-bolt threads) |

* Not illustrated.

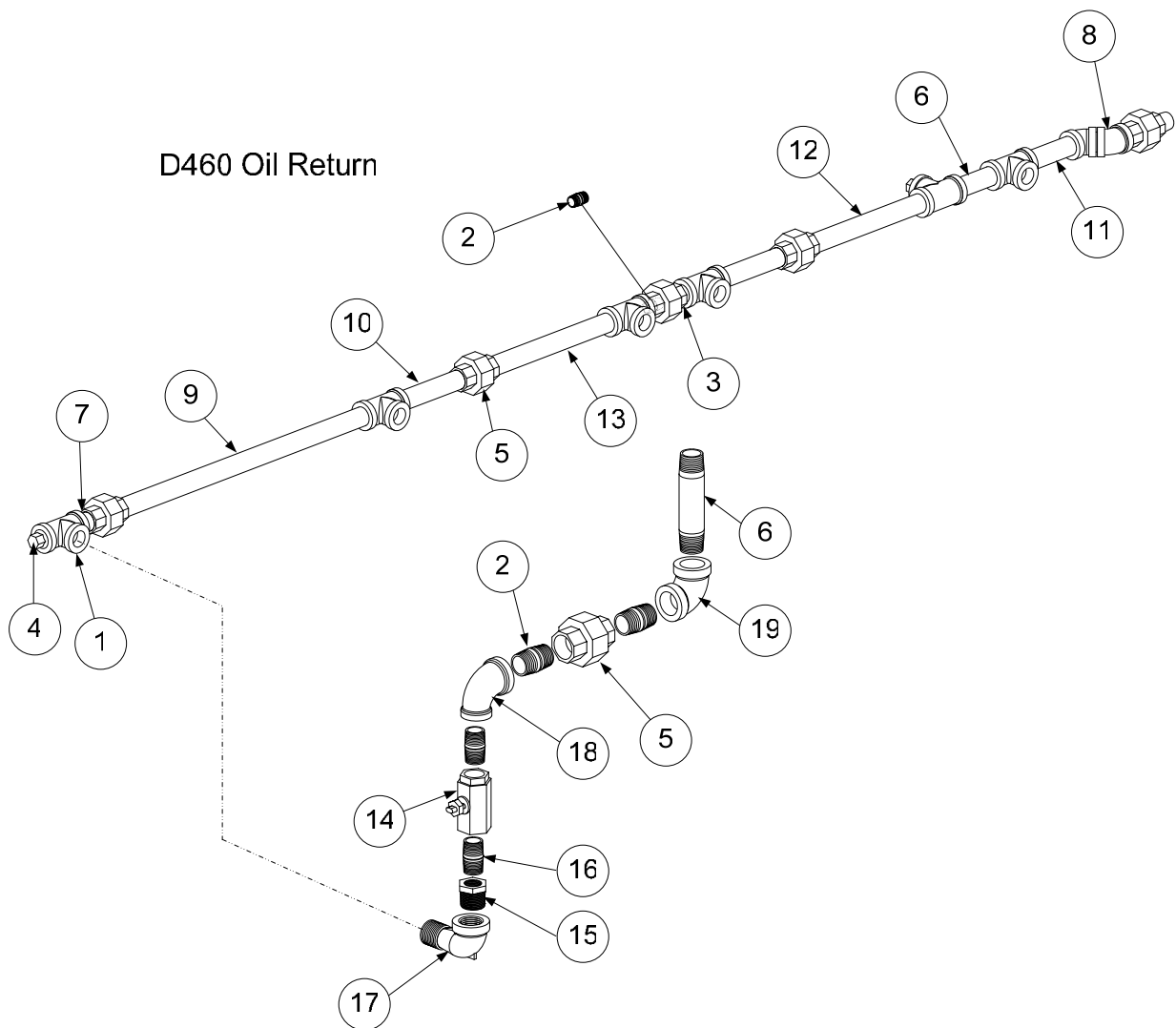
DECATHLON SERIES GAS FRYERS

CHAPTER 2: PARTS LIST

During the transition phase, some Decathlon series fryers were equipped with 3" round drain systems while others were equipped with 1.5" round drain systems. Compare the fryer in question with the illustrations on pages 2-18 to 2-29 to determine which system it uses.

2.6 Oil Return Manifold Components

2.6.1 Oil Return Manifold Components; D & FPD65 Models



**DECATHLON SERIES GAS FRYERS
CHAPTER 2: PARTS LIST**

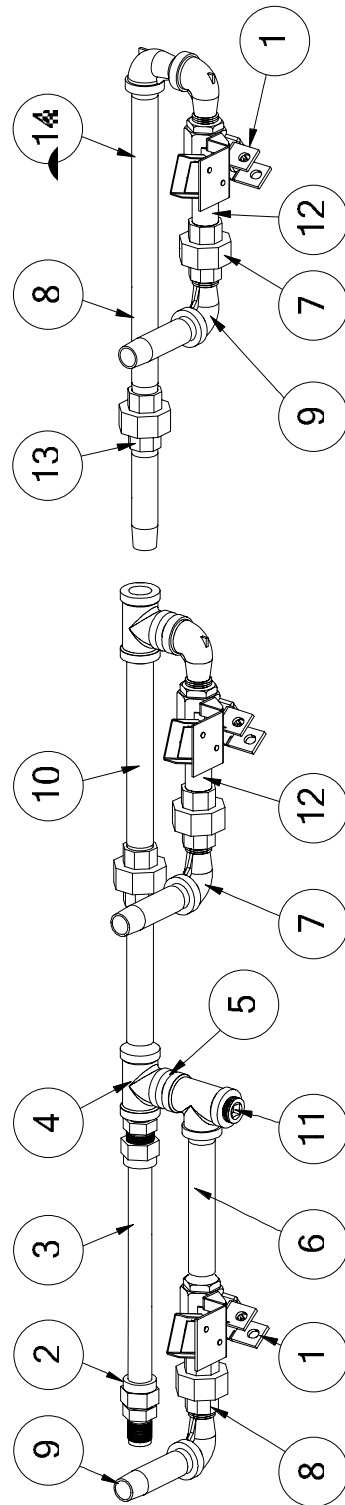
2.6.1 Oil Return Manifold Components; D & FPD65 Models (cont.)

| ITEM | PART # | COMPONENT |
|------|----------|--------------------------------------|
| 1 | 813-0003 | Tee, 1/2" x 1/2" x 1/2" NPT BM |
| 2 | 813-0022 | Nipple, 1/2" NPT x Close BM |
| 3 | 813-0087 | Nipple, 1/2" NPT x 1 1/2" BM |
| 4 | 813-0156 | Plug, 1/2" NPT Hex Head BM |
| 5 | 813-0173 | Union, 1/2" NPT BM |
| 6 | 813-0247 | Nipple, 1/2" NPT x 3 1/2" BM |
| 7 | 813-0298 | Nipple, 1/2" NPT x 2" BM |
| 8 | 813-0345 | Elbow, 1/2" NPT 45° BM |
| 9 | 813-0368 | Nipple, 1/2" NPT x 16" BM |
| 10 | 813-0646 | Nipple, 1/2" NPT x 5" BM |
| 11 | 813-0654 | Nipple, 1/2" x 4" NPT BM |
| 12 | 813-0672 | Nipple, 1/2" x 8" NPT BM |
| 13 | 813-0673 | Nipple, 1/2" x 8 1/2" NPT BM |
| 14 | 810-2125 | Oil Return Valve, 3/8" |
| * | 200-1143 | Retainer, Oil Return Valve Nut |
| * | 809-0877 | Nut, Oil Return Valve |
| 15 | 813-0006 | Bushing, Hex 1/2" x 3/8" NPT BM |
| 16 | 813-0625 | Nipple, 3/8" x Close NPT BM |
| 17 | 813-0165 | Elbow, Street 1/2" x 1/2" NPT 90° BM |
| 18 | 813-0634 | Elbow, 1/2" x 3/8" NPT 90° BM |
| 19 | 813-0062 | Elbow, 1/2" NPT 90° BM |

* Not illustrated

DECATHLON SERIES GAS FRYERS
CHAPTER 2: PARTS LIST

2.6.2 Oil Return Manifold Components; SCFD, CFD, & FPD65 Models



**DECATHLON SERIES GAS FRYERS
CHAPTER 2: PARTS LIST**

2.6.2 Oil Return Manifold Components; SCFD, CFD, & FPD65 Models (cont.)

| ITEM | PART # | COMPONENT |
|------|----------|---|
| | 106-4100 | Oil Return Assembly – Middle |
| | 106-4101 | Oil Return Assembly – End |
| 1 | 106-4006 | Valve Assembly, 1/2" Oil Return (see Page 2-21) |
| * | 106-3997 | Valve Assembly (use with wand) |
| * | 106-5516 | Valve Assembly, 3-way Oil Return |
| * | 106-5231 | Valve Assembly, FPD |
| 2 | 810-1668 | Adapter, Male 5/8" OD x 1/2" |
| 3 | 810-2320 | Flexline, 5/8" x 9.00" Long |
| 4 | 813-0003 | Tee, 1/2" x 1/2" x 1/2" BM |
| 5 | 813-0022 | Nipple, 1/2" x Close NPT BM |
| 6 | 813-0096 | Nipple, 1/2" x 6.00" NPT BM |
| 7 | 813-0165 | Elbow, Street 1/2" x 1/2" NPT 90° BM |
| 8 | 813-0173 | Union, 1/2" NPT |
| 9 | 813-0247 | Nipple, 1/2" x 3.50" NPT BM |
| 10 | 813-0362 | Nipple, 1/2" NPT x 7.50" BM |
| 11 | 813-0463 | Plug, 1/2" Counter Sink |
| 12 | 813-0661 | Nipple, 1/2" x 2.25" NPT BM |
| 13 | 813-0654 | Nipple, 1/2" x 4.00" NPT BM |
| 14 | 813-0597 | Nipple, 1/2" x 11.50" NPT BM |
| * | 810-2125 | Ball Valve, 3/8" Drain |
| * | 813-0006 | Bushing, 1/2" to 3/8" NPT BM Hex Reducing |
| * | 813-0062 | Elbow, 1/2" 90° BM |
| * | 810-1067 | Flexline, 8.5" Oil Return |
| * | 810-1055 | Flexline, 11.5" Oil Return |
| * | 810-1400 | Flexline, 21.00" Oil Return |
| * | 810-1056 | Flexline, 52.5" Oil Return |
| * | 810-2320 | Flexline, 9.00" Oil Return |
| * | 813-0087 | Nipple, 1/2" x 1.50" NPT BM |
| * | 813-0460 | Nipple, 1/2" x 3.00" NPT BM |
| * | 813-0625 | Nipple, 3/8" NPT x CL Black CLS |
| * | 813-0672 | Nipple, 1/2" x 8.00" NPT BM |
| * | 813-0607 | Nipple, 1/2" x 23.5" NPT BM |
| * | 813-0099 | Nipple, 1/2" x 7.00" NPT BM |
| * | 813-0845 | Nipple, 1/2" x 29.75" NPT BM |
| * | 813-0646 | Nipple, 1/2" x 5.00" NPT BM |
| * | 813-0373 | Nipple, 1/2" x 11.00" NPT BM |
| * | 813-0298 | Nipple, 1/2" x 2.00" NPT BM |
| * | 813-0098 | Nipple, 1/2" x 6.50" NPT BM |
| * | 813-0742 | Nipple, 1/2" x 5.50" NPT BM |
| * | 813-0515 | Nipple, 1/2" x 12.00" NPT BM |
| * | 813-0265 | Nipple, 1/2" x 2.50" NPT BM |
| * | 813-0093 | Nipple, 1/2" x 4.00" NPT BM |
| * | 813-0281 | Nipple, 1/2" x 5.00" NPT BM |
| * | 813-0368 | Nipple, 1/2" x 16.00" NPT BM |
| * | 813-0644 | Nipple, 3/8" x 1.5" NPT BM |
| * | 813-0673 | Nipple, 1/2" x 8.5" NPT BM |
| * | 813-0698 | Nipple, 1/2" x 10.5" NPT BM |

* Not illustrated.

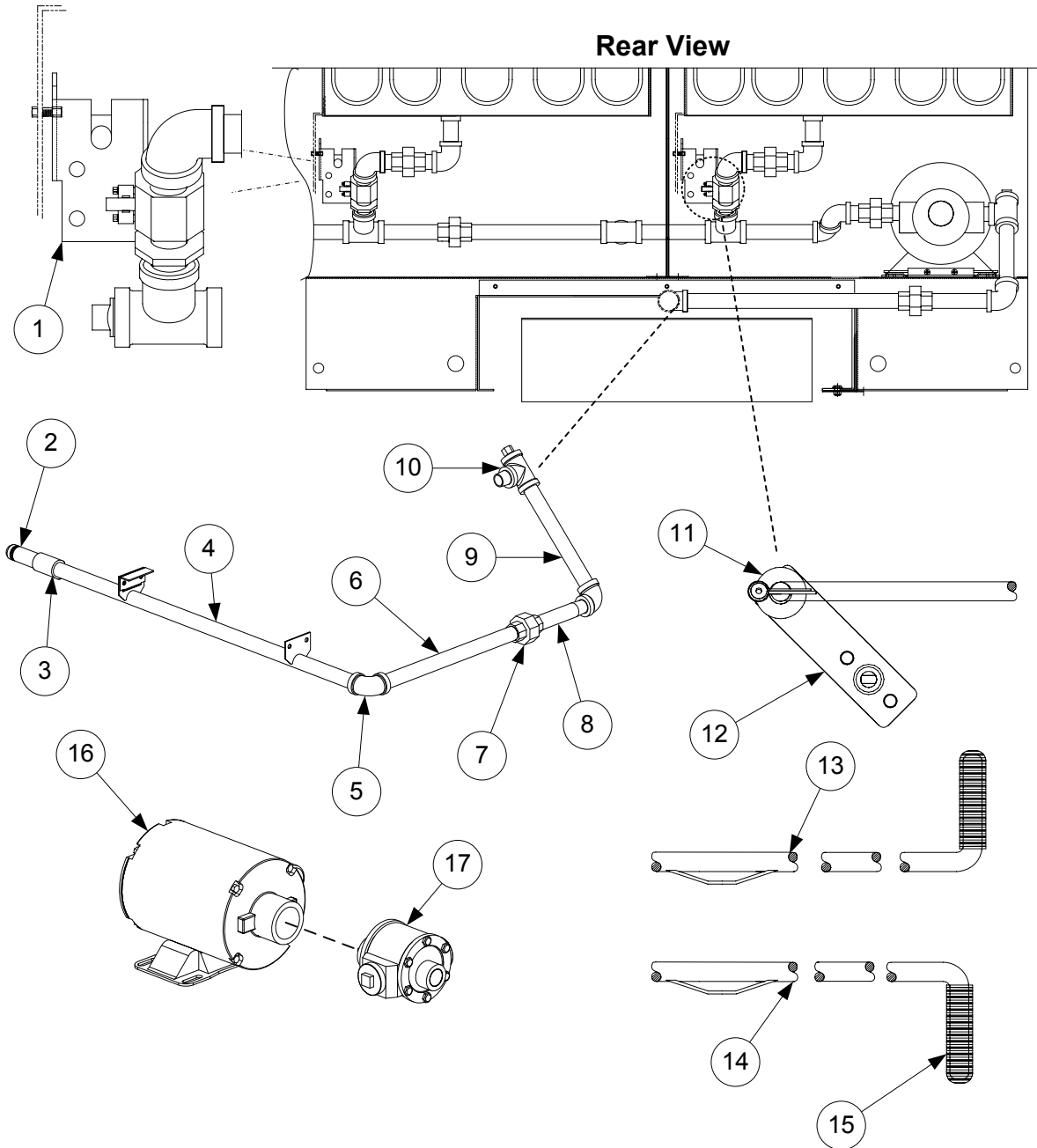
DECATHLON SERIES GAS FRYERS

CHAPTER 2: PARTS LIST

During the transition phase, some Decathlon series fryers were equipped with 3" round drain systems while others were equipped with 1.5" round drain systems. Compare the fryer in question with the illustrations on pages 2-18 to 2-29 to determine which system it uses.

2.7 Oil Return and Oil Flush Components

2.7.1 Oil Return and Oil Flush Components; D & FPD65 Models



**DECATHLON SERIES GAS FRYERS
CHAPTER 2: PARTS LIST**

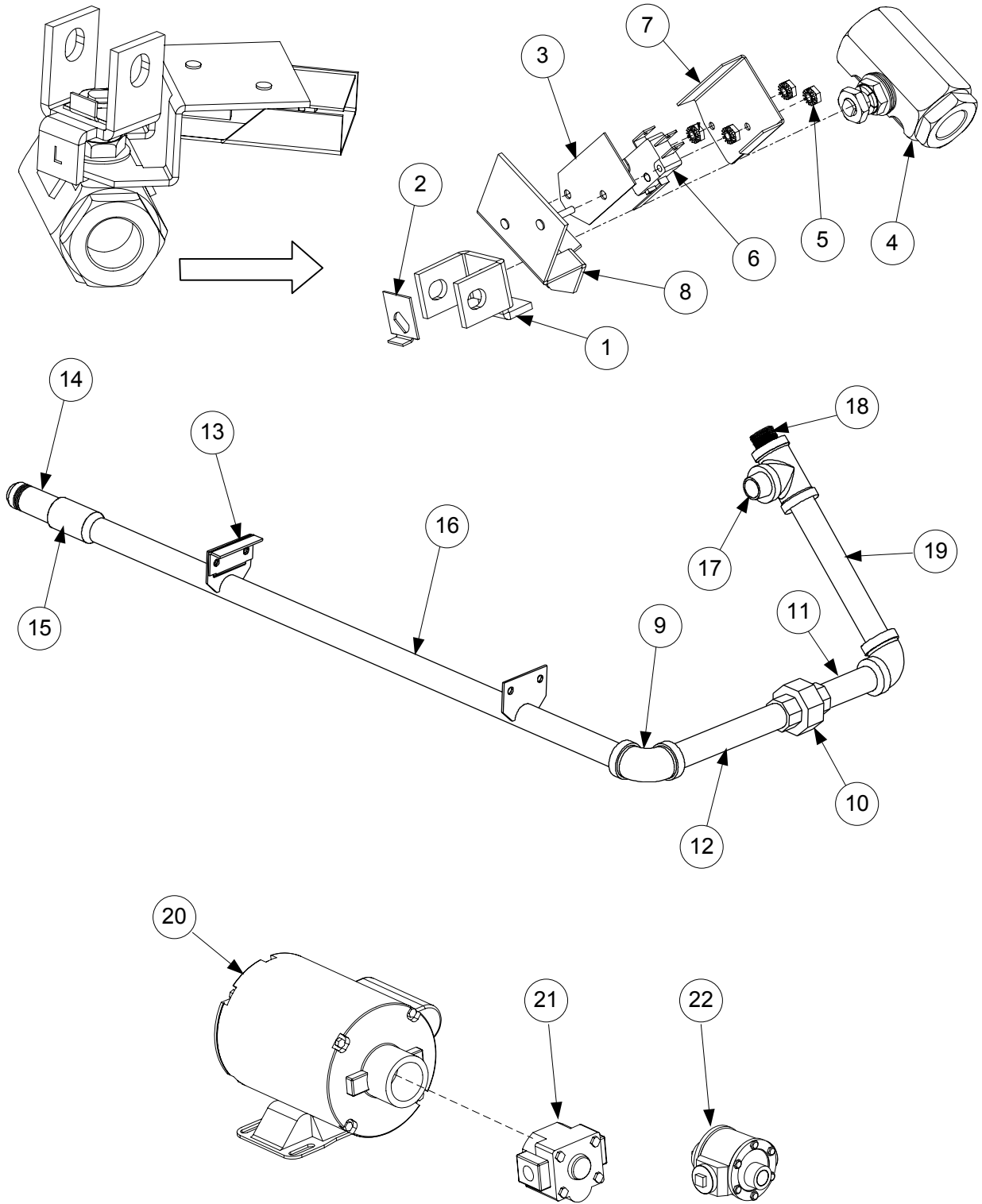
2.7.1 Oil Return and Oil Flush Components; D & FPD65 Models (cont.)

| ITEM | PART # | COMPONENT |
|------|----------|--|
| 1 | | Microswitch Bracket Assembly, Oil Return |
| | 106-1824 | Bracket, Oil Return Microswitch, Left |
| | 106-3595 | Bracket, Oil Return Microswitch, Right |
| | 201-4455 | Bracket, Oil Return Microswitch, Left (FPD) |
| | 202-4455 | Bracket, Oil Return Microswitch, Right (FPD) |
| | 810-2144 | Spacer, 4-40 $\frac{1}{4}$ " x $\frac{3}{8}$ " Aluminum |
| | 807-2104 | Microswitch, Oil Return |
| | 809-0846 | Screw, 4-40 x 1" Slotted Head |
| | 809-0842 | Nut, 4-40 Nylock |
| | 200-1341 | Bracket, Microswitch Rod |
| | 809-0360 | Screw, #8 x $\frac{3}{8}$ " Hex Washer Slotted Head |
| | 826-1389 | Screw, $\frac{1}{4}$ -20 x $\frac{3}{4}$ " Hex Head |
| | 809-0428 | Screw, $\frac{1}{4}$ -20 x $\frac{1}{2}$ " Hex Head |
| | 809-0823 | Nut, $\frac{1}{4}$ -20 Nylock |
| | 809-0070 | Nut, $\frac{1}{4}$ -20 Hex SS |
| 2 | 810-0697 | Disconnect, Male Suction Tube |
| * | 826-1392 | O-rings, for Male Disconnect (<i>pack of 5</i>) |
| 3 | 813-0608 | Coupling, Full, $\frac{1}{2}$ " NPT BM |
| 4 | 823-3188 | Suction Manifold Assembly |
| 5 | 813-0062 | Elbow, 90° BM |
| 6 | 813-0515 | Nipple, $\frac{1}{2}$ " NPT x 12" BM |
| 7 | 813-0173 | Union, $\frac{1}{2}$ " NPT BM |
| 8 | 813-0251 | Nipple, $\frac{1}{2}$ " NPT x 4 $\frac{1}{2}$ " BM |
| 9 | 813-0672 | Nipple, $\frac{1}{2}$ " NPT x 8" BM |
| 10 | | Oil Suction Start Fitting |
| * | 813-0022 | Nipple, $\frac{1}{2}$ " NPT x Close |
| * | 813-0156 | Plug, $\frac{1}{2}$ " NPT Hex Head |
| * | 813-0003 | Tee, $\frac{1}{2}$ " NPT BM |
| 11 | 809-0885 | Washer, $\frac{3}{8}$ " x 1" x .083" |
| * | 809-0843 | Cotter Pin, Plated |
| 12 | 823-3344 | Handle (Actuator), Oil Return Valve |
| 13 | 823-3187 | Handle, Oil Return Left Fryer (UFF System) |
| 14 | 823-3198 | Handle, Oil Return Right Fryer (UFF System, Fryer 3 & 4) |
| * | 823-3481 | Handle, Oil Flush Valve |
| * | 816-0547 | Cap, Drain Valve Handle, Red |
| 15 | 816-0548 | Cap, Oil Return Handle, Yellow |
| * | 816-0549 | Cap, Oil Flush Handle, Blue |
| 16 | 810-2100 | Motor, Pump 120-230V |
| 17 | 810-2098 | Pump, 8 GPM |
| * | 810-2252 | Pump, Chili's, 5 GPM |

* Not illustrated.

DECATHLON SERIES GAS FRYERS
CHAPTER 2: PARTS LIST

2.7.2 Oil Return and Oil Flush Components; SCFD, CFD, & FPD65 Models



**DECATHLON SERIES GAS FRYERS
CHAPTER 2: PARTS LIST**

2.7.2 Oil Return and Oil Flush Components; SCFD, CFD, & FPD65 Models (cont.)

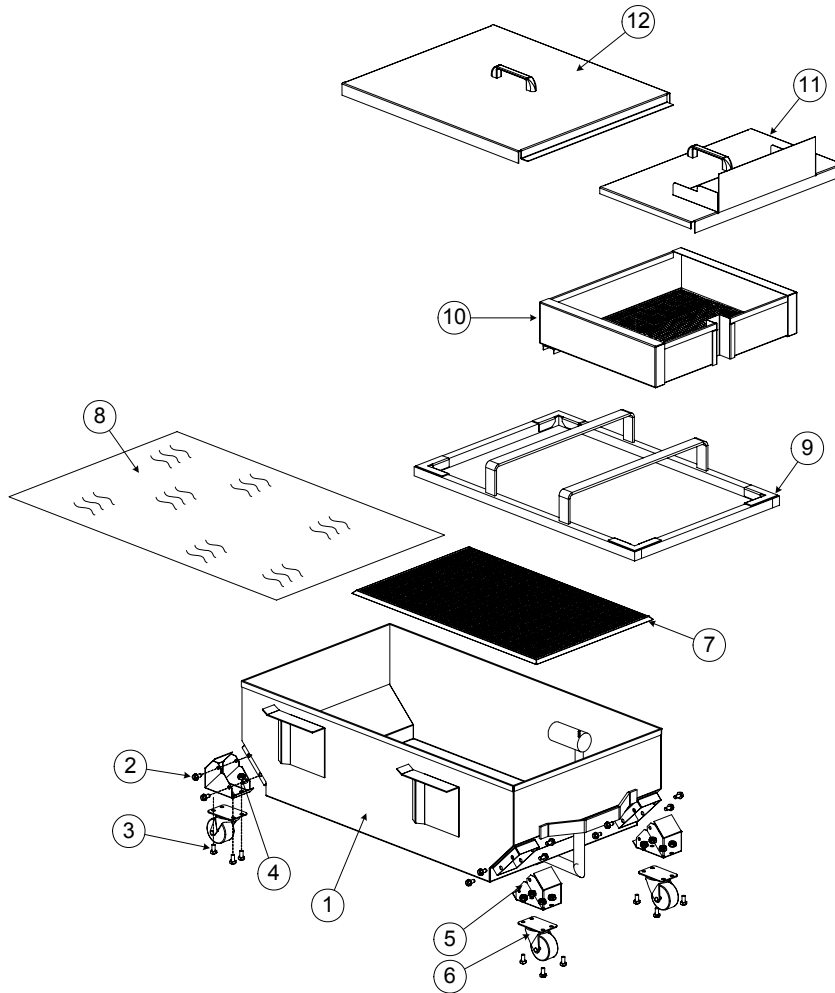
| ITEM | PART # | COMPONENT |
|------|------------|---|
| | 106-4006 | Microswitch Bracket Assembly, Oil Return |
| 1 | 901-2772 | Handle, RF Left |
| 2 | 900-2935 | Retainer, Nut |
| 3 | 816-0220 | Insulation, RF Switch |
| 4 | 810-0278 | Ball Valve, 1/2" Oil Return |
| 5 | 826-1366 | Nut, 4-40 Keps Hex w/External Teeth (pkg. of 25) |
| 6 | 807-2103 | Microswitch, Straight Lever (CE) |
| 7 | 200-6806 | Cover, Safety Switch |
| 8 | 106-3962 | Bracket Assembly, RF Switch |
| | 106-1225SP | Oil Suction Assembly |
| 9 | 813-0062 | Elbow, 90° BM |
| 10 | 813-0173 | Union, 1/2" NPT 150# BM |
| 11 | 813-0654 | Nipple, TBE 1/2" NPT x 4" Black |
| 12 | 813-0674 | Nipple, TBE 1/2" NPT x 7 1/4" Black |
| 13 | 200-1230 | Bracket, Front Male Manifold |
| | 106-0774SP | Suction Manifold Assembly |
| 14 | 810-0697 | Disconnect, Male Suction Tube |
| * | 826-1392 | O-rings, for Male Disconnect (<i>pack of 5</i>) |
| 15 | 813-0608 | Coupling, 1/2" NPT BM Full |
| 16 | 823-3188 | Suction Manifold |
| | 106-0858 | Oil Suction Start Fitting |
| 17 | 813-0022 | Nipple, 1/2" NPT x Close |
| 18 | 813-0463 | Plug, 1/2" Counter Sink |
| 19 | 813-0003 | Tee, 1/2" NPT BM |
| * | 210-8790 | Bracket, Oil Return/Flush Retainer |
| * | 200-8929 | Handle, Oil Return |
| * | 200-9850 | Handle, Oil Return (Application Series "DF" fryers) |
| * | 816-0548 | Cap, Oil Return Handle, Yellow |
| * | 816-0637 | Cap, Oil Return Handle, Blue |
| | | Pump and Motor |
| 20 | 810-2100 | Motor |
| 21 | 810-2252 | Pump, Chili's, 5GPM |
| 22 | 810-2098 | Pump, 8GPM |

* Not illustrated.

**DECATHLON SERIES GAS FRYERS
CHAPTER 2: PARTS LIST**

2.8 UFF Filtration Components

2.8.1 UFF Filtration Components; D50 Series Fryers

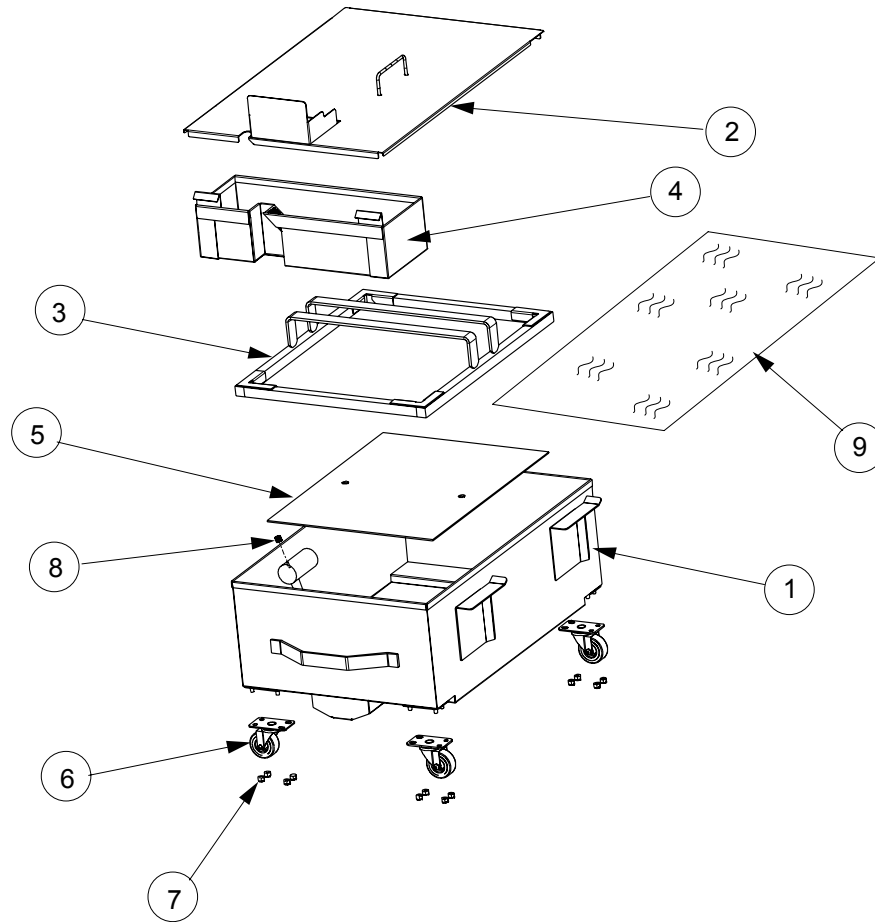


| ITEM | PART # | COMPONENT |
|------|------------|--|
| 1 | 106-2115SP | Filter Pan |
| 2 | 809-0805 | Screw, 1/4-20 x 1/2" |
| 3 | 809-0428 | Screw, 1/4-20 x 1/2" Steel |
| 4 | 809-0820 | Nut, Oval Locking, 1/4-20 |
| 5 | 823-4794 | Insert, Caster |
| 6 | 810-2805 | Caster, 2" |
| 7 | 823-3574 | Support Grid, Bottom Pan Screen |
| 8 | 803-0289 | Filter Paper, 22" x 34" (100 sheets per box) |
| 9 | 823-3573 | Hold-down Ring, Weighted |
| 10 | 823-4320 | Crumb Basket |
| 11 | 106-0752SP | Lid Assembly, Front |
| 12 | 106-1755SP | Lid Assembly, Rear |
| * | 106-3230SP | Lid Assembly, One Piece, Chili's |
| * | 106-2568SP | Wand Assembly |

* Not illustrated.

**DECATHLON SERIES GAS FRYERS
CHAPTER 2: PARTS LIST**

2.8.2 UFF Filtration Components; SCFD50 Series Fryers

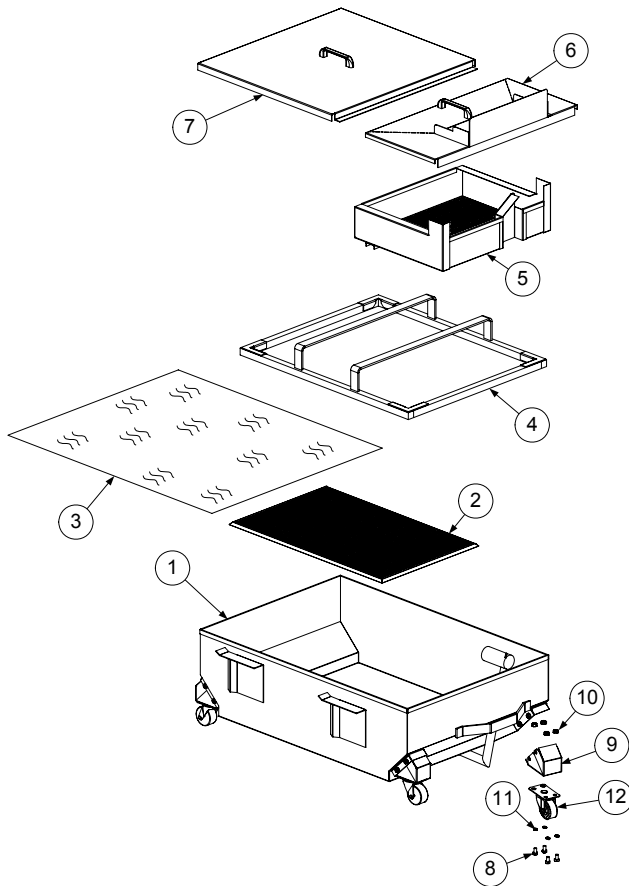


| ITEM | PART # | DESCRIPTION |
|------|------------|---|
| 1 | 106-5144SP | Filter Pan |
| 2 | 823-5639 | Lid, Filter Pan |
| 3 | 823-3573 | Ring, Hold Down |
| 4 | 823-5191 | Crumb Basket |
| 5 | 200-8003 | Screen, Sana Grid |
| 6 | 810-2805 | Caster, 2" |
| 7 | 809-0823 | Nut, Nylock, 1/4-20 |
| 8 | 813-0568 | Pipe Plug, 1/8 NPT Socket-head |
| 9 | 803-0170 | Filter Paper, 16.5" x 25.75" (100 sheets per box) |

* Not illustrated.

DECATHLON SERIES GAS FRYERS
CHAPTER 2: PARTS LIST

2.8.3 UFF Filtration Components; D60 and D80 Series Fryers

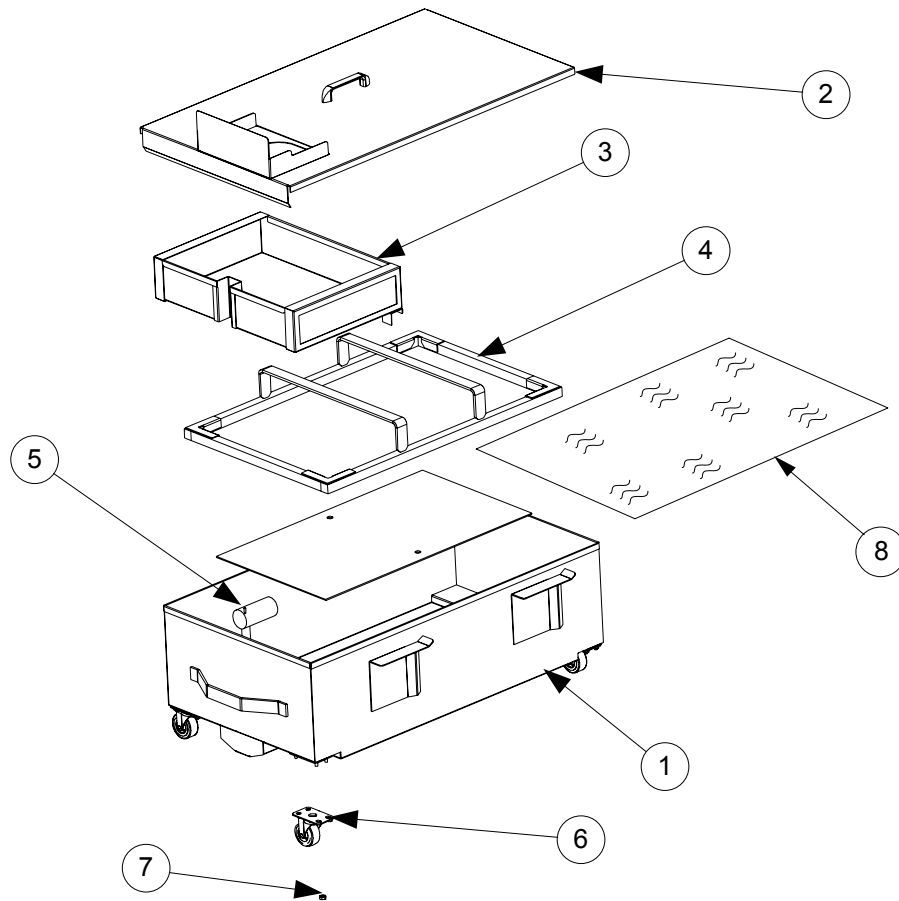


| ITEM | PART # | COMPONENT |
|------|------------|--|
| 1 | 106-0749SP | Filter Pan (UFF 60) |
| * | 106-1584SP | Filter Pan (UFF 80) |
| * | 106-4521 | Filter Pan (UFF 100) |
| 2 | 823-3365 | Support Grid, Bottom Pan Screen |
| 3 | 803-0289 | Filter Paper, 22 x 34" (100 sheets per box)(UFF 60) |
| * | 803-0303 | Filter Paper, 26 x 34" (100 sheets per box) (UFF 80) |
| 4 | 823-3361 | Hold-down Ring, Weighted (UFF 60) |
| * | 823-3439 | Hold-down Ring, Weighted (UFF 80) |
| 5 | 823-4320 | Crumb Basket (UFF 60) |
| * | 823-3443 | Crumb Basket (UFF 80) |
| 6 | 106-0752SP | Lid, Front (UFF 60) |
| * | 106-1587SP | Lid, Front (UFF 80) |
| 7 | 106-0753SP | Lid, Rear (UFF 60) |
| * | 106-1588SP | Lid, Rear (UFF 80) |
| 8 | 809-0428 | Screw, 1/4-20 x 1/2" Steel |
| 9 | 823-4794 | Insert, Caster |
| 10 | 809-0820 | Nut, Oval Locking, 1/4-20 |
| 11 | 809-0805 | Screw, 1/4-20 x 1/2" |
| 12 | 210-2805 | Caster, 2" |

* Not illustrated.

**DECATHLON SERIES GAS FRYERS
CHAPTER 2: PARTS LIST**

2.8.4 UFF Filtration Components; SCFD60 and FPD65 Series Fryers

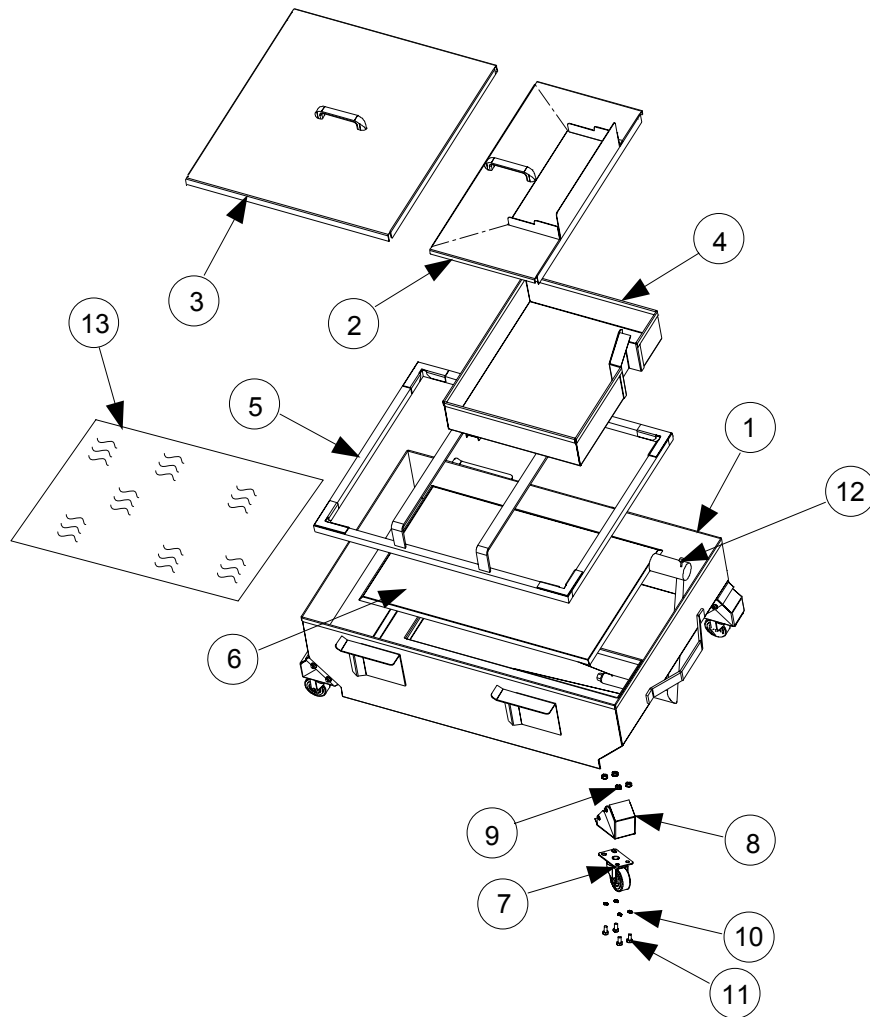


| ITEM | PART # | COMPONENT |
|------|------------|---|
| 1 | 106-1220SP | Filter Pan (SCFD) |
| * | 823-4109 | Filter Pan (FPD) |
| 2 | 106-4725SP | Lid Assembly (SCFD) |
| * | 106-6119SP | Lid Assembly (FPD) |
| 3 | 823-4320 | Crumb Basket (SCFD) |
| * | 823-3872 | Crumb Basket (FPD) |
| 4 | 823-3361 | Hold Down Ring (SCFD) |
| * | 810-2350 | Filter Leaf (FPD) |
| 5 | 200-5726 | Screen, Bottom Filter (SCFD) |
| * | 810-2582 | Fitting, Filter Leaf (FPD) |
| 6 | 810-2805 | Caster, 2" |
| 7 | 809-0070 | Nut, 1/4-20 Hex S/S |
| 8 | 803-0289 | Filter Paper, 22" x 34" (100 sheets; 803-0266, 25 sheets) |

* Not illustrated.

**DECATHLON SERIES GAS FRYERS
CHAPTER 2: PARTS LIST**

2.8.5 UFF Filtration Components; SCFD80 Series Fryers



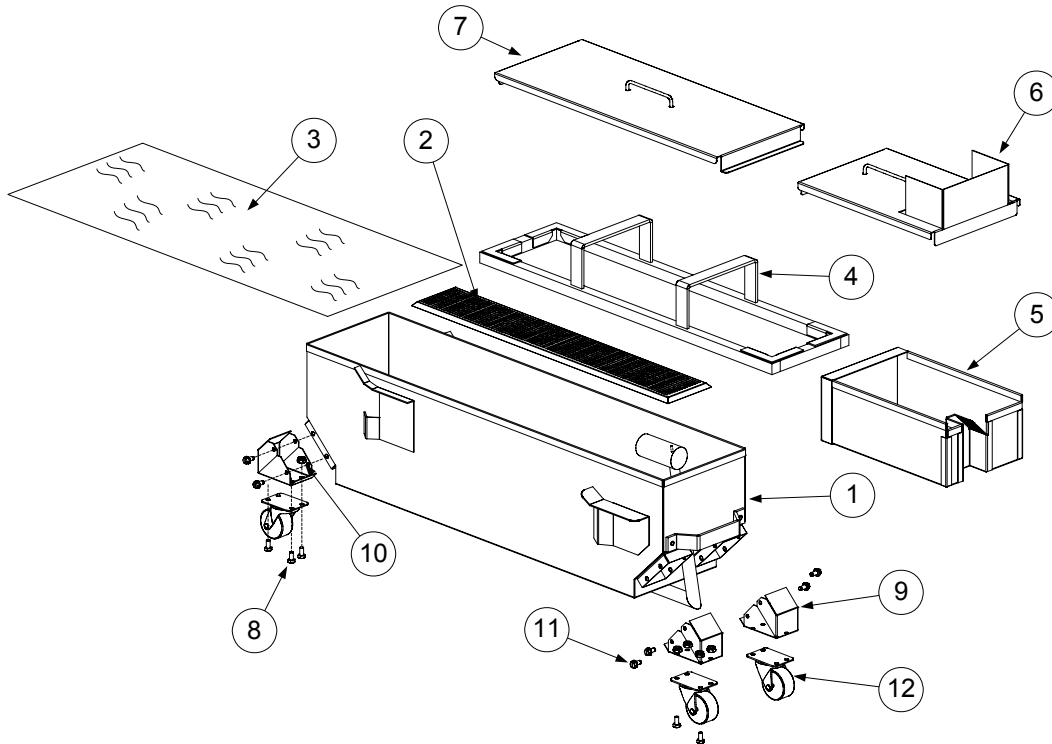
| ITEM | PART # | COMPONENT |
|------|----------|--|
| 1 | 823-5406 | Filter Pan |
| 2 | 106-5321 | Lid, Front (UFF 80) |
| 3 | 106-5317 | Lid, Rear (UFF 80) |
| 4 | 823-5412 | Crumb Basket |
| 5 | 823-5409 | Hold Down Ring |
| 6 | 823-3365 | Grid |
| 7 | 810-2805 | Caster, 2" |
| 8 | 823-5407 | Insert, Caster |
| 9 | 809-0804 | Nut, 1/4-20 Cap (with Ext. Tooth) |
| 10 | 809-0191 | Washer, 1/4" Spring Lock |
| 11 | 809-0428 | Screw, 1/4-20 x 1/2 Hex Head |
| 12 | 813-0679 | Plug, 1/8" S/S Square Head Pipe (Suction) |
| * | 813-0704 | Plug, 3/8" S/S Hex Head |
| 13 | 803-0303 | Filter Paper, 26" x 34" (100 sheets per box) |

* Not illustrated.

**DECATHLON SERIES GAS FRYERS
CHAPTER 2: PARTS LIST**

2.9 SUFF Filtration Components

2.9.1 SUFF Filtration Components; D50 Series Fryers

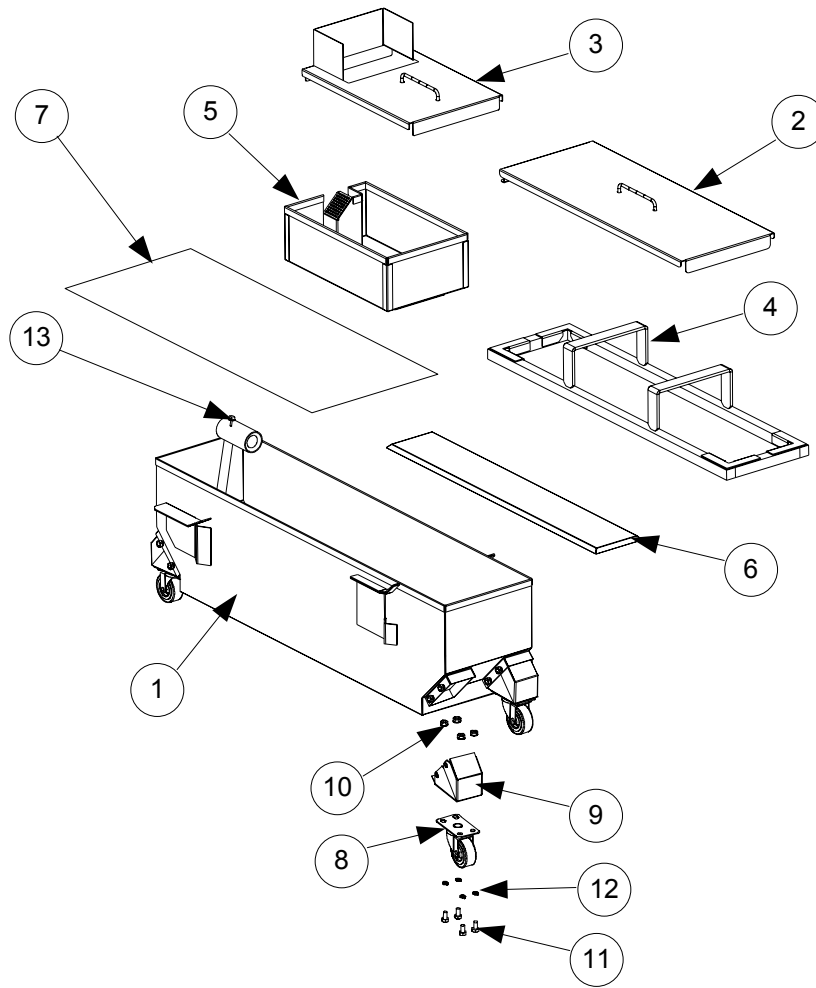


| ITEM | PART # | COMPONENT |
|------|----------|---|
| 1 | 823-3796 | Filter Pan (SUFF 50) |
| * | 813-0684 | Plug, Hex Socket, 3/8" NPT |
| * | 813-0679 | Plug, 1/8" SS Square Head (Female Disconnect) |
| 2 | 823-3790 | Support Grid, Bottom Pan Screen |
| 3 | 803-0317 | Filter Paper, 8-1/4 x 25-3/4" |
| 4 | 823-3795 | Hold-down Ring, Weighted |
| 5 | 823-3736 | Crumb Basket |
| 6 | 823-3797 | Filter Pan Cover, Front |
| 7 | 823-3798 | Filter Pan Cover, Back |
| 8 | 809-0428 | Screw, 1/4-20 x 1/2" Steel |
| 9 | 823-4794 | Insert, Castor |
| 10 | 809-0820 | Nut, Oval Locking, 1/4-20 |
| 11 | 809-0805 | Screw, 1/4-20 x 1/2" |
| 12 | 810-2805 | Castor, 2" |

* Not Illustrated.

**DECATHLON SERIES GAS FRYERS
CHAPTER 2: PARTS LIST**

2.9.2 SUFF Filtration Components; CFD50 Series Fryers

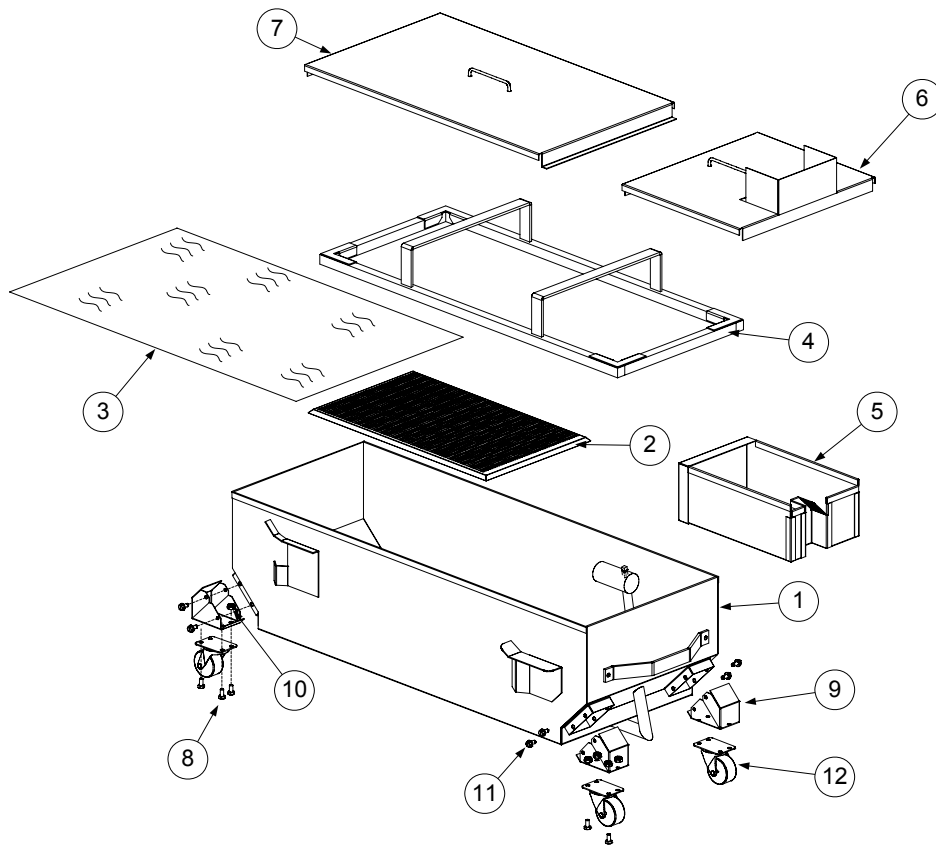


| ITEM | PART # | COMPONENT |
|------|----------|-----------------------------------|
| 1 | 823-3796 | Filter Pan |
| 2 | 823-3798 | Lid, Filter Pan, Rear |
| 3 | 823-3797 | Lid, Filter Pan, Front |
| 4 | 823-3795 | Hold-down Ring |
| 5 | 823-5423 | Crumb Basket (SUFF50/60/80) |
| 6 | 823-3790 | Grid, Bottom Filter |
| 7 | 803-0317 | Filter Paper, 8.25" x 25.75" |
| 8 | 810-2805 | Caster, 2" |
| 9 | 823-5407 | Insert, Caster |
| 10 | 809-0804 | Nut, 1/4-20 Cap (with Ext. Tooth) |
| 11 | 809-0428 | Screw, 1/4-20 x 1/2" Hex Head |
| 12 | 809-0191 | Washer, 1/4" Spring Lock |
| 13 | 813-0679 | Plug, 1/8" SS Square Head |

* Not Illustrated.

DECATHLON SERIES GAS FRYERS
CHAPTER 2: PARTS LIST

2.9.3 SUFF Filtration Components; D60 and D80 Series Fryers

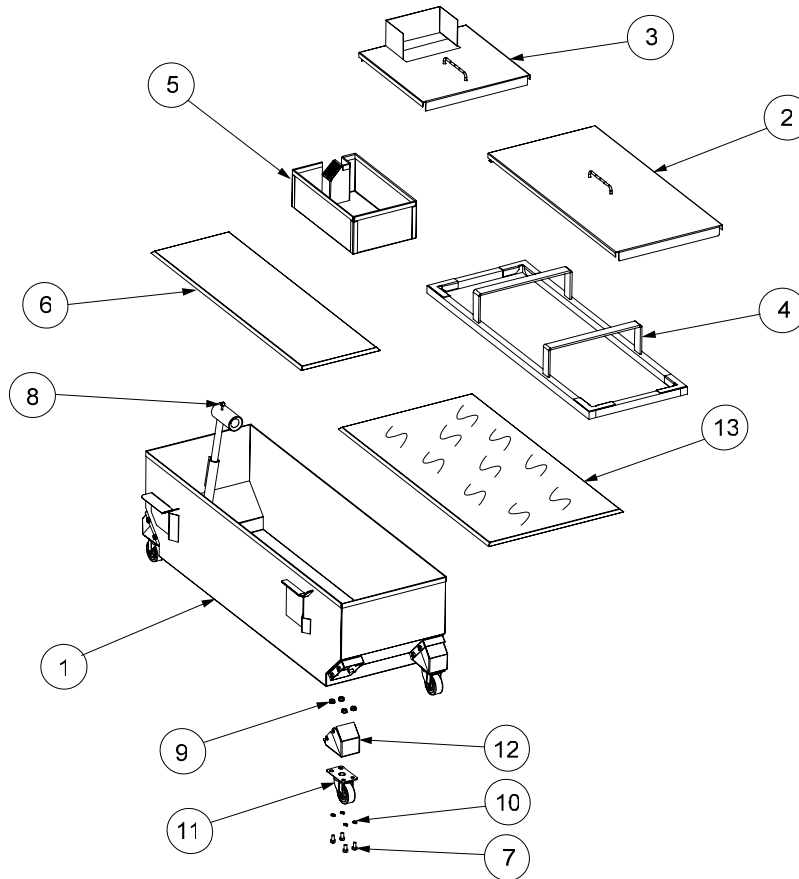


| ITEM | PART # | COMPONENT |
|------|----------|---|
| 1 | 823-3774 | Filter Pan (SUFF 60) |
| * | 823-3821 | Filter Pan, (SUFF 80) |
| * | 813-0684 | Plug, Hex Socket, 3/8" NPT |
| * | 813-0679 | Plug, 1/8" SS Square Head (Female Disconnect) |
| 2 | 823-3768 | Support Grid, Bottom Pan Screen (SUFF 60/80) |
| 3 | 803-0289 | Filter Paper, 22" x 34" (SUFF 60/80) |
| 4 | 823-3770 | Hold-down Ring, Weighted (SUFF 60) |
| * | 823-3849 | Hold-down Ring, Weighted (SUFF 80) |
| 5 | 823-3736 | Crumb Basket (SUFF 60/80) |
| 6 | 823-3766 | Filter Pan Cover, Front (SUFF 60) |
| * | 823-3739 | Filter Pan Cover, Front (SUFF 80) |
| 7 | 823-3767 | Filter Pan Cover, Back (SUFF 60) |
| * | 823-3741 | Filter Pan Cover, Back (SUFF 80) |
| 8 | 809-0428 | Screw, 1/4-20 x 1/2" Steel |
| 9 | 823-4794 | Insert, Castor |
| 10 | 809-0820 | Nut, Oval Locking, 1/4-20 |
| 11 | 809-0805 | Screw, 1/4-20 x 1/2" |
| 12 | 810-2805 | Castor, 2" |

* Not Illustrated

**DECATHLON SERIES GAS FRYERS
CHAPTER 2: PARTS LIST**

2.9.4 SUFF Filtration Components; CFD60 and CFD80 Series Fryers

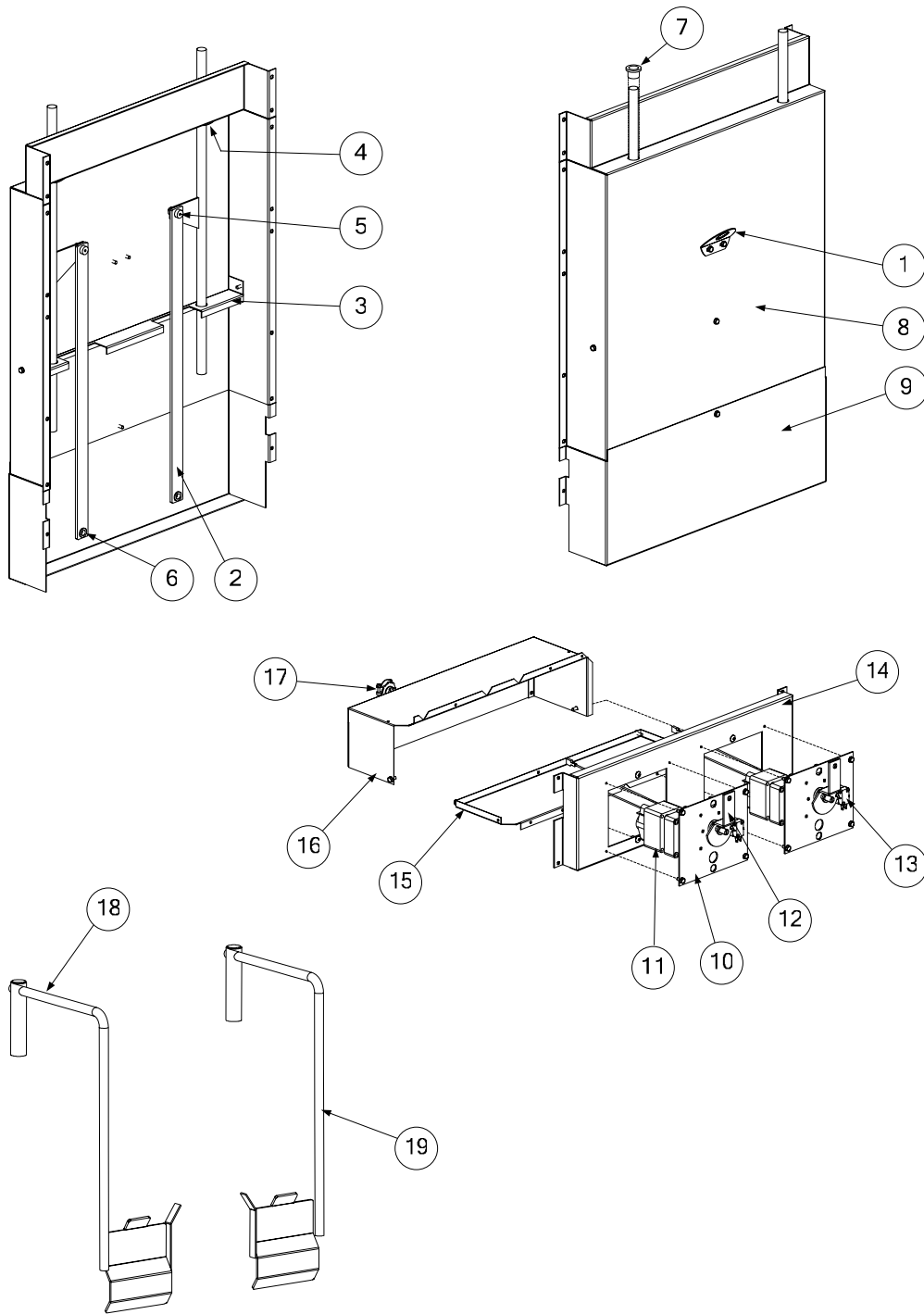


| ITEM | PART # | COMPONENT |
|------|----------|--|
| 1 | 823-5420 | Filter Pan (SUFF 60) |
| * | 823-3821 | Filter Pan (SUFF 80) |
| * | 106-1433 | Filter Pan, Early Style, External Pickup (SUFF 80) |
| 2 | 823-5424 | Filter Pan Cover, Front (SUFF 60) |
| * | 823-3739 | Filter Pan Cover, Front (SUFF 80) |
| 3 | 823-5425 | Filter Pan Cover, Back (SUFF 60) |
| * | 823-3741 | Filter Pan Cover, Back (SUFF 80) |
| 4 | 823-5422 | Hold-down Ring, Weighted (SUFF 60) |
| * | 823-3849 | Hold-down Ring, Weighted (SUFF 80) |
| 5 | 823-5423 | Crumb Basket (SUFF 60/80) |
| 6 | 823-5421 | Support Grid, Bottom Pan Screen (SUFF 60/80) |
| 7 | 809-0428 | Screw, 1/4-20 x 1/2" Steel |
| 8 | 813-0679 | Plug, 1/8" SS Square Head (Female Disconnect) |
| 9 | 809-0804 | Nut, 1/4-20 Locking (with ext. tooth) |
| 10 | 809-0191 | Washer, 1/4 Spring Lock |
| 11 | 810-2805 | Caster, 2" |
| 12 | 823-5407 | Insert, Caster |
| 13 | 803-0289 | Paper, Filter- 22 x 34" (SUFF 60/80) |
| * | 813-0684 | Plug, Hex Socket, 3/8" NPT |

* Not Illustrated.

DECATHLON SERIES GAS FRYERS
CHAPTER 2: PARTS LIST

2.10 Basket Lift Components; D50, D60, and D80 Models



**DECATHLON SERIES GAS FRYERS
CHAPTER 2: PARTS LIST**

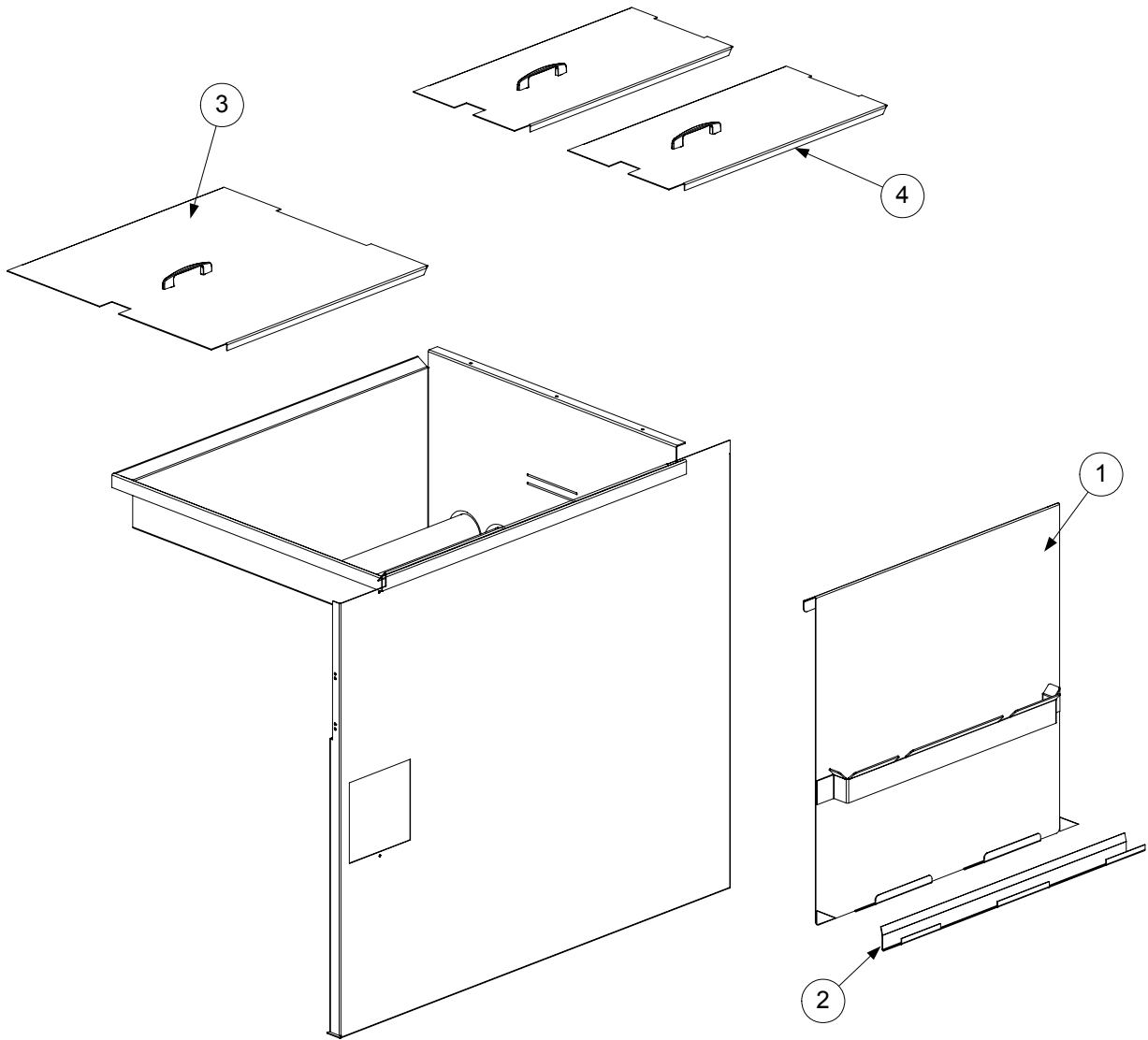
2.10 Basket Lift Components; D50, D60, and D80 Series Fryers (cont.)

| ITEM | PART # | COMPONENT |
|------|----------|---|
| | 106-1914 | Basket Lift Assembly (D50) |
| | 106-1870 | Basket Lift Assembly (D60) |
| | 106-1926 | Basket Lift Assembly (D80) |
| 1 | 200-1376 | Bracket, Restraining |
| 2 | 200-2069 | Member, Lift Control Arm |
| | | Channel, Support Autolift |
| 3 | 200-3094 | Channel (D80) |
| * | 200-2735 | Channel (D60) |
| * | 200-3072 | Channel (D50) |
| 4 | 809-0879 | Receiver, $\frac{3}{4}$ " Tinnerman Stud |
| 5 | 809-0907 | Screw, $\frac{3}{8}$ " x $\frac{1}{4}$ " Shoulder |
| * | 809-0863 | Nut, $\frac{5}{16}$ "-18 Hex |
| 6 | 810-2140 | Bushing (Bronze), Oiltite $\frac{3}{8}$ " x $\frac{1}{4}$ " |
| 7 | 813-0035 | Bushing (Bronze), Oiltite .640 I.D. |
| | | Back, Basket Lift Motor |
| 8 | 824-0996 | Back (D80) |
| * | 824-0958 | Back (D60) |
| * | 824-0990 | Back (D50) |
| | | Cover, Basket Lift Motor |
| 9 | 824-0997 | Cover (D80) |
| * | 824-0959 | Cover (D60) |
| * | 824-0991 | Cover (D50) |
| 10 | 200-1693 | Plate, Motor Mounting |
| 11 | 807-0107 | Motor, Gear |
| 12 | 823-3626 | Switch, Limit Cam |
| 13 | 807-2104 | Microswitch |
| * | 810-2144 | Spacer |
| * | 809-0846 | Screw, 4-40 x 1" |
| * | 809-0842 | Nut, 4-40 Nylock |
| | | Motor Housing |
| 14 | 200-3150 | Housing, Front (D80) |
| * | 200-2736 | Housing, Front (D60) |
| * | 200-3087 | Housing, Front (D50) |
| 15 | 200-3114 | Housing, Bottom (D80) |
| * | 200-2739 | Housing, Bottom (D60) |
| * | 200-3079 | Housing, Bottom (D50) |
| 16 | 200-3116 | Housing, Back (D80) |
| * | 200-2740 | Housing, Back (D60) |
| * | 200-3091 | Housing, Back (D50) |
| 17 | 807-0140 | Connector, $\frac{3}{8}$ " |
| * | 807-3087 | Basket Lift Timer, 120V, 60 Hz, 15 min. |
| * | 810-1822 | Timer Knob |
| * | 810-1823 | Timer Button |
| * | 826-1552 | Basket Lift Timer Kit |
| 18 | 823-3505 | Left Basket Lift Arm |
| 19 | 823-3499 | Right Basket Lift Arm |

* Not illustrated.

**DECATHLON SERIES GAS FRYERS
CHAPTER 2: PARTS LIST**

2.11 Trough, Holster, and Cover Components; D60, FPD65, & D80 Models



| ITEM | PART # | COMPONENT |
|------|------------|---------------------------------------|
| 1 | 106-2668 | Holster Assembly, Vat Cover |
| 2 | 823-3384 | Trough, Holster Assembly |
| 3 | 106-1447 | Cover, Full-vat |
| 4 | 106-2585SP | Cover, Split-vat |
| * | 106-2897SP | Cover, FPD |
| * | 810-2030 | Handle, Vat Cover (Full- and Split-) |
| * | 809-0107 | Screw, 8-32 x 3/8" Round Slotted Head |
| * | 823-4767 | Splash Guard |
| * | 803-0278 | L-shaped Brush |
| * | 803-0197 | Fryer's Friend |
| * | 823-3938 | Crumb Scoop |

* Not illustrated.