



CHAIN GRIDDLE - FRONT DRAIN

MODELS: CG-48F, CG-60F, CG-72F (SONIC DRIVE-IN)

PARTS LIST

Toll Free Phone, (US & Canada): (800) 427-6668

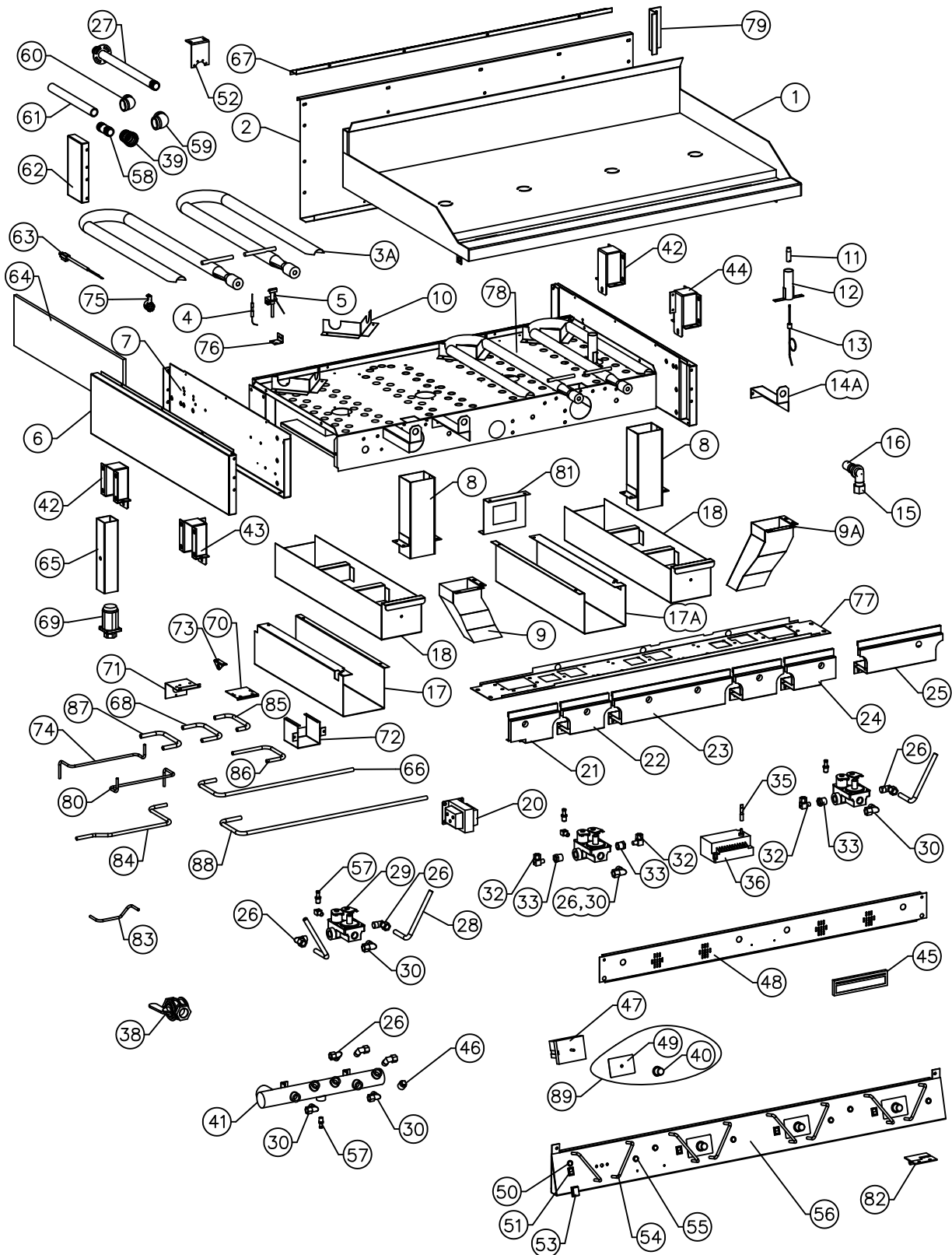
Toll Free Fax, (US & Canada): (800) 361-7745

<http://www.garland-group.com>



**CHAIN GRIDDLE - FRONT DRAIN (SONIC DRIVE-IN)
MODELS CG-48F - CG-60F - CG-72F**

DESCRIPTION	PAGE
Chain Griddle - All Models	4
Revision History	8



GARLAND PART IDENTIFICATION
CHAIN GRIDDLE - FRONT DRAIN (SONIC DRIVE IN)

ITEM	PART NUMBER	DESCRIPTION	MODELS			CRITL PARTS
			CG48F	CG60F	CG72F	
1	2648199	Griddle Assembly 48"	1			
	4520530	Griddle Assembly 60"		1		
	4520591	Griddle Assembly 72"			1	
2	2647300	Flue Panel	1			
	4520484	Flue Panel		1		
	4520595	Flue Panel			1	
3A	2405203	CG Burner Assembly - Left with Bracket	2	2	3	C
	2405202	CG Burner Assembly - Right with Bracket	2	3	3	C
3B*	4523316	Kit - CG Burner - RH				C
	4523317	Kit - CG Burner - LH				C
	Units manufactured before serial number 0707100100001 will require the following burner kits (above)					
	4	1466100	Flame Sensor	2	3	3
5	2290404	Pilot Assembly - Natural	2	3	3	C
	2290401	Pilot Assembly - Propane	2	3	3	C
6	4520489	Main Side Assembly	2	2	2	
7	4520487	Body End Assembly - Left	1	1	1	
	4520488	Body End Assembly - Right	1	1	1	
8	2648099	Grease Chute Assembly	2	2	2	
9	4520477	Grease Chute Extension - Left	1	1	1	
9a	4520478	Grease Chute Extension - Right	1	1	1	
10	2408900	Rear Burner Support	4	5	6	
11	2423600	Bayonet Adapter	4	5	6	
12	2400699	Probe Shield Assembly	4	5	6	
13	4522537	Kit "J" Thermocouple w/Thermal Compound	4	5	6	C
	Note: Kit Includes "J" Thermocouple Bayonet Mount P/N 2423501 & Thermal Compound P/N 4522185.					
13A*	4522185	Thermal Compound - 4 grams 120-SA				
14A	2443000	Single Burner Mounting Bkt	4	5	6	
15	2431900	Orifice Fitting	4	5	6	
16	M8-38	Orifice Hood - Natural	4	5	6	
	M8-52	Orifice Hood - Propane	4	5	6	
17	4520475	Grease Drawer Slide - Left	1	1	1	
17a	4520476	Grease Drawer Slide - Right	1	1	1	
18	4520461	Grease Drawer Assembly	2	2	2	
20	G03559-1	Transformer - 120V	1			C
	1636000	Transformer - 208V - 240V	1			C
	2582500	Transformer - 115V - 208V - 240V		1	1	C
21	4520470	End Radiation Shield Assembly - Left	1	1	1	
22	4520472	Double Burner Radiation Shield Assembly	2	1	3	
23	4520469	Double Radiation Shield Assembly	1	2	2	
24	4520471	End Radiation Shield Assembly - Right	1	1	1	
25	4520486	Burner Shield Assembly End		1		
26	076050-26	3/8" X 3/8" Comp. Elbow	6	8	8	
27	4520480	Nipple Assembly	1	1	1	
28	4520490	3/8" dia. tubing solenoid - orifice	4	5	6	
29	2405100	Gas Control/Regulator - Natural 60 Hz	3	4	5	C
	2405102	Gas Control/Regulator - Natural 50 Hz	3	4	5	C
	2405101	Gas Control/Regulator - Propane 60 Hz	3	4	5	C
	2405103	Gas Control/Regulator - Propane 50 Hz	3	4	5	C
30	G02352-1	7/16"cc X 3/8"N.P.T.Comp.Elbow	4	6	6	
32	076050-80	Compression Elbow 1/4T X 1/8P #69-4A	2	3	3	

* NOT ILLUSTRATED

RECOMMENDED STOCK PARTS

GARLAND PART IDENTIFICATION
CHAIN GRIDDLE - FRONT DRAIN (SONIC DRIVE IN)

ITEM	PART NUMBER	DESCRIPTION	MODELS			CRITL PARTS
			CG48F	CG60F	CG72F	
33	076029-144	3/8" x 1/8" Reducing Bushing	2	3	3	
35	2043600	Spark Plug Connector	2	3	3	
36	2152700	Ignition Control - No longer Available Equipment manufactured up to June 8, 2010 will require Ignition Module Service Kit P/N 4527306	2	3	3	C
	4527002	Ignition Module - Fenwal Required for equipment manufactured after June 9, 2010 M/D: CG-72R-0016, S/N 1006100100101	2	3	3	C
38	G01518-1	Shut-Off Valve	1	1	1	
39	2437100	1" - 3/4" Reducing Adapter	1	1	2	
40	4516733	Dial w/Pointer	4	5	6	
41	2411099	Manifold Assembly	1	1	1	
42	3063100	Leg Mount	2	2	2	
43	3063198	Leg Mount Assembly Left	1	1	1	
44	3063199	Leg Mount Assembly Right	1	1	1	
45	3077101	Nameplate - Garland	1	1	1	
46	G01747-3	3/8" Pipe Plug	2	1		
47	2432000	Electronic Thermostat	4	5	6	C
48	4520566	Upper Front Panel 48	1			
	4520482	Upper Front Panel 60		1		
	4520593	Upper Front Panel 72			1	
49	4515805	Dial Scale - Degrees Fahrenheit	4	5	6	
50	G04055-2	Green Indicator Light	3	4	4	
51	2423301	Main Power Switch	1	1	1	C
52	4520479	Manifold Support Bracket	1	1	1	
53	2423400	Protection Cap	1	1	1	
54	2432100	Handle (Knob Guard)	8	10	12	
55	G04055-1	Amber Indicator Light	4	5	6	
56	4520567	Lower Front Panel Assembly	1			
	4520483	Lower Front Panel Assembly		1		
	4520594	Lower Front Panel Assembly			1	
57	G02251-1	Test Spigot	4	5	6	
58	G01738-4	3/4" NPT x 2 1/2" Nipple	1	1	1	
59	G01474-3	3/4" NPT to 1" NPT 90° Elbow Reducer			1	
60	G01474-5	3/4" NPT Elbow			1	
61	G01738-20	3/4" NPT x 10 5/8" Nipple			1	
62	2674400	Bracket - Rear Standoff	2	2	2	
63	4523399	Power Cord 9Ft - 3/14GA 15Amps SJ00W	1	1	1	
64	078100-15	32.5" x 8" x 0.5" Insulation	2	2	2	
65	3073602	Griddle Leg	4	4	4	
66	4520492	7/16" Dia. Tubing Solenoid - Manifold Left	1	1	1	
67	4520569	Flue Filler 48	1			
	4520473	Flue Filler 60		1		
	4520592	Flue Filler 72			1	
68	4520576	7/16" Dia. Tubing Solenoid - Manifold			1	
69	G02954-1	Leg Bullet	4	4	4	
70	2437500	Transformer Support Bracket (G03559-1)	1	1	1	
70(a)	2501400	Transformer Support Bracket (2283700) Export	1			
71	2501200	Electrical Box - Top	1			
	2659300	Electrical Box - Top		1	1	

* NOT ILLUSTRATED

RECOMMENDED STOCK PARTS

GARLAND PART IDENTIFICATION
CHAIN GRIDDLE - FRONT DRAIN (SONIC DRIVE IN)

ITEM	PART NUMBER	DESCRIPTION	MODELS			CRITL PARTS
			CG48F	CG60F	CG72F	
72	2501300	Electrical Box - Bottom	1			
	2659200	Electrical Box - Bottom		1	1	
73	2452800	Restraining Bracket	2	2	2	
74	4520494	1/4" Dia. Tubing - Solenoid - Pilot Left	1	1	2	
75	G01497-1	Strain Relief	1	1	1	
76	2426700	Pilot Bracket	2	3	3	
77	4520568	Valve Panel	1			
	4520485	Valve Panel		1		
	4520596	Valve Panel			1	
78	2516702	Body Frame	1			
	2516703	Body Frame		1		
	2516704	Body Frame			1	
79	4520481	Flue Spacer	3	3	5	
80	4520495	1/4" Dia. Tubing - Solenoid - Pilot Right	1		1	
81	2432900	Grease Tray Slide Support	2	2	2	
82	2471400	Hinge set w/Holes - Lower Front Panel Assembly	2	2	2	
83	4520496	1/4" Dia. Tubing - Solenoid - Pilot Single Right		1		
84	4520497	3/8" Dia. Tubing - Solenoid - Manifold Right		1	1	
85	4520493	7/16" Dia. Tubing - Solenoid - Manifold Centre	1	1		
86	4520491	3/8" Dia. Tubing - Solenoid - Manifold Centre	1			
87	4520584	7/16" Dia. Tubing - Solenoid - Manifold Centre			1	
88	4520585	7/16" Dia. Tubing - Solenoid - Manifold Right			1	
89	4516847	Dial and Scale Kit	4	5	6	

* NOT ILLUSTRATED

RECOMMENDED STOCK PARTS

GARLAND PARTS IDENTIFICATION
Revision History

REV. #	PAGE #	ITEM #	NOTE	DATE
			New part list released	Oct 14/05
1	6	66	Quantity of 1 added to CG-60F	Dec 14/05
		68	Quantity of 1 added to CG-72F	
		74	Quantity of 1 added to CG-60F - Quantity changed to CG72F, was 1	
	7	85	Quantity of 1 added to CG-48F	
		86	Quantity of 1 added to CG-48F - Quantity deleted to CG60F, was 1	
2	6	66	Quantity of 1 added to CG-72F	Jan 10/07
		68	Quantity of 1 deleted on CG-48F	
	7	84	Quantity of 1 added to CG-72F	
3	7	82	Description changed	May 9/07
4	4	14	ballon Item 14 Removed - ballon item 3 replaced by 3A	Dec 3/07
	5		Part # 2403000 (Single Burner Mounting Bkt) removed	
		3	Part # deleted - was 2405201 (Burner Assembly - Left), use 3A	
			Part # deleted - was 2405200 (Burner Assembly - Right), use 3A	
	3A & 3B	New part number added		
5,6,7		Critical part column added		
5	6	63	New part number - was G2840-2 (SJT 3/14 15A Cord & Plug Set 120V)	July 8/08
6	6	39	Quantity changed - was (CG48F: 2), (CG60F: 2), (CG72F: 1)	Aug 22/08
7	4		Item number 89 added	Feb 2/09
	7	89	New part number added	
8	5	13	Part number changed - was 2423501(J Thermocouple)	Aug 7/09
		13A	New part number added	
9	6	36	Part added for use with equipment manufactured after June 9, 2010	Jun 17/10

 **Garland**[®]