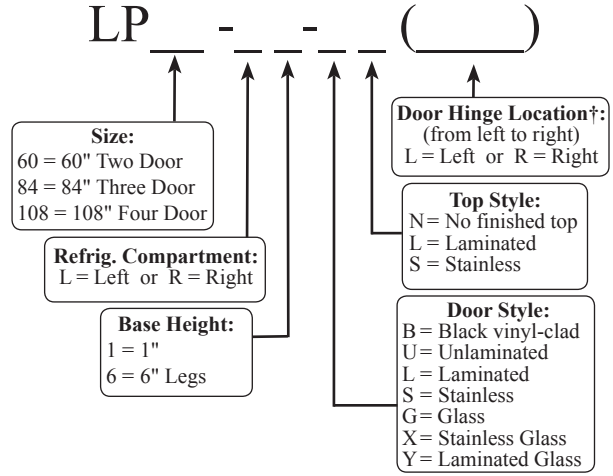




Project: _____	AIA# _____
Item #: _____ Qty: _____	SIS# _____
Model #: _____	

**Low Profile Coolers
Two, Three and Four Door
Self-Contained**



LP60 is NSF standard 7 listed for open food storage

† Specify hinge location for each door

Standard Features

- Self-contained
- All stainless steel interior construction with radius interior corners for easy cleaning
- Foamed-in-place insulation
- Galvanized steel sub-top
- Black vinyl-clad steel exterior front and sides
- Six foot grounded cord and plug (exits at rear)
- Stainless steel die cast handle
- Automatic defrost timer
- Stainless steel evaporator housing with separate removable evaporator drain pan
- Automatic condensate evaporator
- Leg sockets recessed into base
- 1/2" thick ABS plastic threshold scuff plate
- 180° swinging doors

Specifications

Electrical

- 120V, 1 phase, 60 Hz, LP60 - 8.56 full load amps, LP84 - 8.84 full load amps, LP108 - 11.1 full load amps
- Dedicated 15 amp circuit is required
- Includes a 6 foot grounded cord and plug which exits the back of refrigeration compartment

Refrigeration

- 1/3 HP, LP60 and LP84 - R134a refrigerant, LP108 - R404A refrigerant

Operating Range

- 34° F to 40° F

Plumbing

- Automatic condensate evaporator. No drain connection required

Shelving

- One adjustable coated shelf and one bottom coated rack per door included

Legs

- 1-5/8" diameter
- Stainless steel bullet feet

Materials

- 22 gauge stainless steel parts include: interior floor, walls, ceiling, front of cabinet, and evaporator housing
- 22 gauge black vinyl-clad parts include: sides, standard doors, and compressor compartment housing
- 22 gauge galvanized steel parts include: exterior sub-top and back
- 16 gauge stainless steel parts include: legs
- 16 gauge galvanized steel parts include: base and compressor compartment base plate
- 16 gauge zinc plated CR steel parts include: leg sockets
- 12 gauge stainless steel parts include: hinges, hinge brackets, and lock brackets

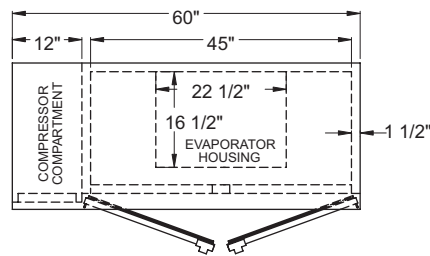
<p>Glastender, Inc. • 5400 N Michigan Rd • Saginaw, MI • 48604-9780 989.752.4275 • 800.748.0423 • Fax 989.752.4444 www.glastender.com</p>	Approval/Notes:
--	-----------------

Specifications subject to change without notice. For current specifications please visit our website.

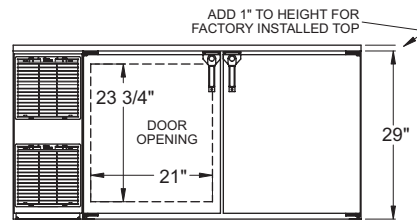
Self-Contained Low Profile Coolers

Dimensional Information

LP60

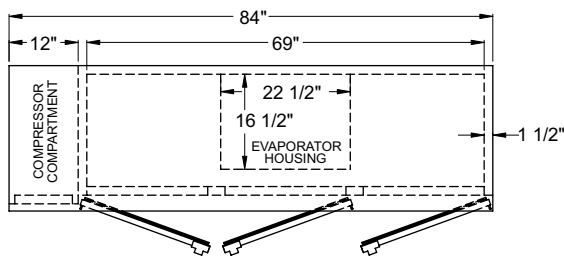


Plan View

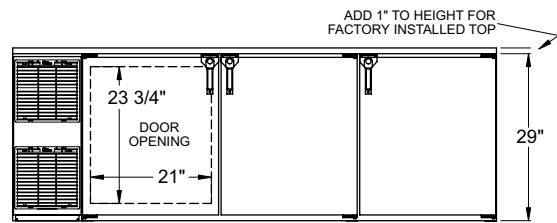


Front Elevation

LP84

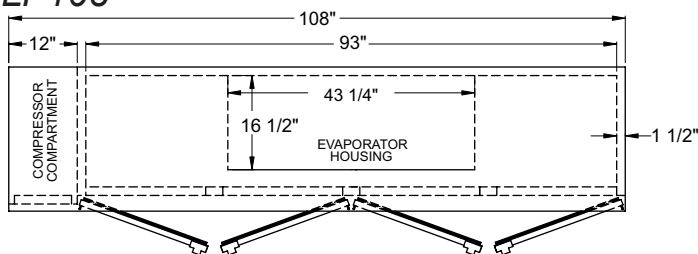


Plan View

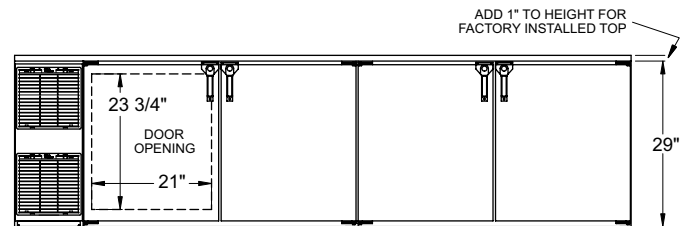


Front Elevation

LP108

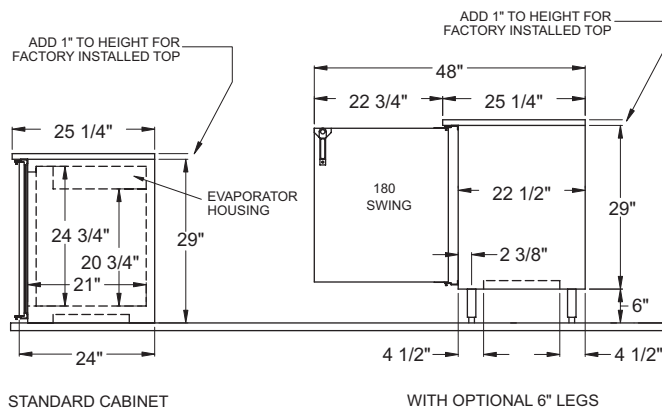


Plan View



Front Elevation

Side View All Models



STANDARD CABINET

WITH OPTIONAL 6" LEGS

Model	Capacity: 12 oz. bottle	Refrigeration	Voltage	Amps
LP60	10.5 cases	1/3 H.P. / R22	120v / 60 Hz / 1 phase	8.8 full load
LP84	16.34 cases	1/3 H.P. / R22	120v / 60 Hz / 1 phase	8.8 full load
LP108	22.16 cases	1/3 H.P. / R22	120v / 60 Hz / 1 phase	8.8 full load

Note: Available with compressor left or right. Compressor left model shown. Use Model Number Key to specify location when ordering.



5400 N Michigan Rd • Saginaw, MI • 48604-9780
989.752.4275 • 800.748.0423 • Fax 989.752.4444
www.glastender.com