



PT48-L1-SNN(LL/RR)



Project: _____	AIA# _____
Item #: _____ Qty: _____	SIS# _____
Model #: _____	

Pass-Thru Coolers Four, Six and Eight Door Remote

PT - - - N(/)

Size:
48 = 48" Four Door
72 = 72" Six Door
96 = 96" Eight Door

**Refrigeration
Hook-Up Location:**
L = Left or R = Right

Base Height:
1 = 1"
6 = 6" Legs

Door Hinge Location†:
(from left to right)
L = Left or R = Right

Top Style:
N = No finished top
L = Laminated
S = Stainless

Door Style:
B = Black vinyl-clad
U = Unlaminated
L = Laminated
S = Stainless
G = Glass
X = Stainless Glass
Y = Laminated Glass

† Specify a hinge location for each door

Standard Features

- Remote unit
- All stainless steel interior construction
- Foamed-in-place insulation
- Galvanized steel sub-top
- Black vinyl-clad steel exterior front and sides
- Stainless steel die cast handle
- Stainless steel evaporator housing with separate removable evaporator drain pan
- Leg sockets recessed into base
- 1/2" thick ABS plastic threshold scuff plate
- 180° swinging doors

Specifications

Electrical

- 120V, 1 phase, 60 Hz
- Dedicated 15 amp circuit is required
- 14 gauge wire connection is made inside the cooler next to evaporator housing - interior access is through one of the 3/4" side knock-out holes (electrician's choice)

Refrigeration

- R134a or R404a expansion valve & temperature control included. Specify type required when ordering.
- Recommended condensing unit:
PT48 - 1/4 HP which has an approximate rating of 2,200 BTU/H at 20°F evaporator temperature
PT72 and PT96 - 1/3 HP which has an approximate rating of 3,064 BTU/H at 20°F evaporator temperature
- All refrigeration hookups are made at the installation site

Plumbing

- A ten foot length of 1/2" ID by 5/8" OD plastic tubing is provided to drain condensate. The tubing should exit through one of the 3/4" side knock-out holes (installer's choice). The maximum drainage is one ounce per hour - consult local codes for compliance - a floor drain may be required

Shelving

- Two adjustable coated shelves and one bottom coated rack per door included

Legs

- 1-5/8" diameter
- Stainless steel bullet feet

Materials

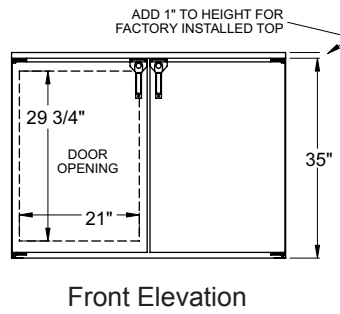
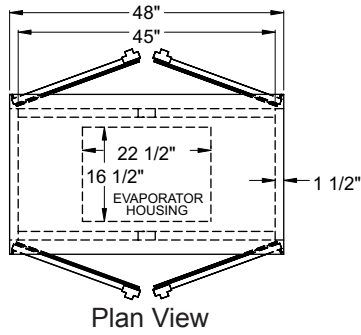
- 22 gauge stainless steel parts include: interior floor, walls, ceiling, front of cabinet, and evaporator housing
- 22 gauge black vinyl-clad parts include: sides and standard doors
- 22 gauge galvanized steel parts include: exterior sub-top
- 16 gauge stainless steel parts include: legs
- 16 gauge galvanized steel parts include: base
- 16 gauge zinc plated CR steel parts include: leg sockets
- 12 gauge stainless steel parts include: hinges, hinge brackets, and lock brackets

Glastender, Inc. • 5400 N Michigan Rd • Saginaw, MI • 48604-9780 989.752.4275 • 800.748.0423 • Fax 989.752.4444 www.glastender.com	Approval/Notes: _____
Specifications subject to change without notice. For current specifications please visit our website.	

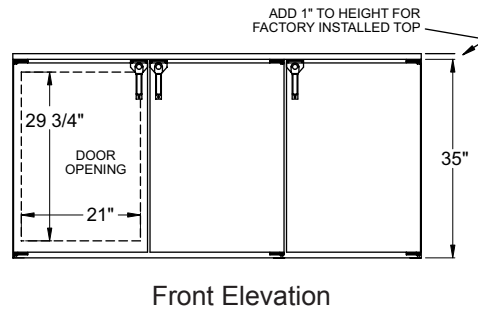
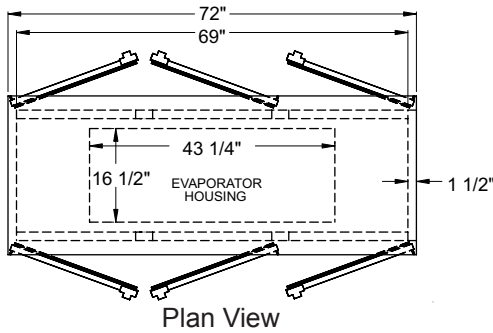
Remote Pass-Thru Coolers

Dimensional Information

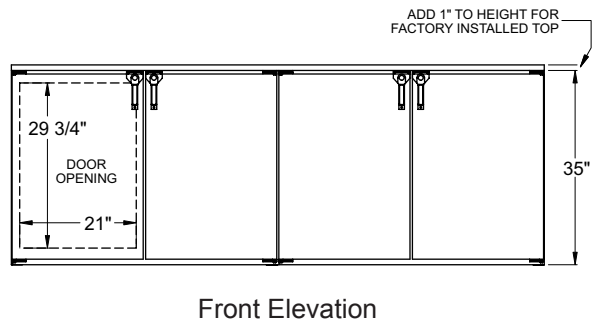
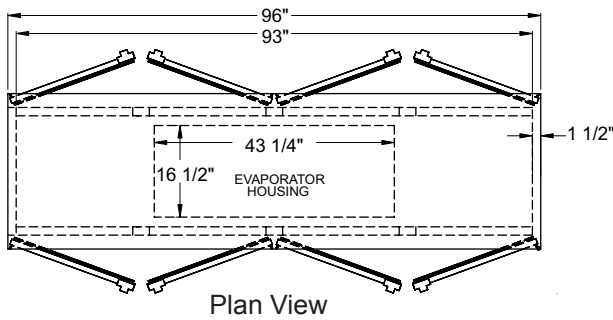
PT48



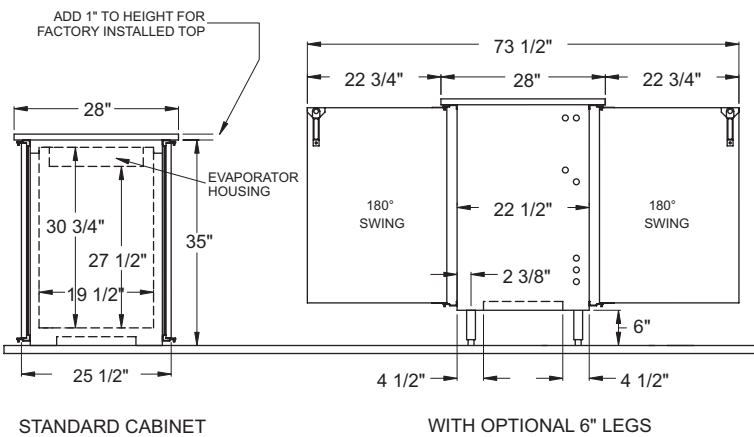
PT72



PT96



Side View All Models



Model	Capacity: 12 oz. bottle / 1/2 barrels	Refrigeration	Voltage
PT48	12.83 cases / 2 half barrels	1/4 H.P. Recommended	120v / 60 Hz / 1 phase
PT72	19.25 cases / 4 half barrels	1/2 H.P. Recommended	120v / 60 Hz / 1 phase
PT96	28.58 cases / 5 half barrels	1/2 H.P. Recommended	120v / 60 Hz / 1 phase