



Project: _____	AIA# _____
Item #: _____ Qty: _____	SIS# _____
Model #: _____	

Reach-in Mug Chiller One Door Self-contained



MFV24-SS(R)

MFV24- ()

Door Style: B = Black vinyl clad U = Unlaminated L = Laminated S = Stainless	Door Hinge Location: L = Left or R = Right
Top Style: N = No finished top L = Laminated S = Stainless	

Standard Features

- Self-contained
- All stainless steel interior construction
- CFC free foamed-in-place insulation
- Galvanized steel sub-top
- Black vinyl-clad steel exterior front and sides
- Six foot grounded cord provided (exits at rear)
- Stainless steel die cast handle
- Two Defrost Cycles: *automatic* - occurs every six hours without affecting normal operation, *manual* - user selected for complete six-hour defrost with automatic restart
- Stainless steel evaporator housing with separate removable evaporator drain pan
- Automatic condensate evaporator
- Bottom rack and two shelves
- 180° swinging door



Specifications

Electrical

- 120V, 1 phase, 60 Hz, 6.7 full load amps
- Dedicated 15 amp circuit is required
- Includes a 6 foot grounded cord and plug which exits the back of refrigeration compartment

Refrigeration

- 1/3 HP high, R404A refrigerant

Operating Range

- 0°F to 35°F

Plumbing

- Automatic condensate evaporator. No drain connection required

Shelving

- Bottom rack and two shelves included

Capacity

- 105 10-oz mugs

Legs

- 1-5/8" diameter
- Stainless steel bullet feet

Materials

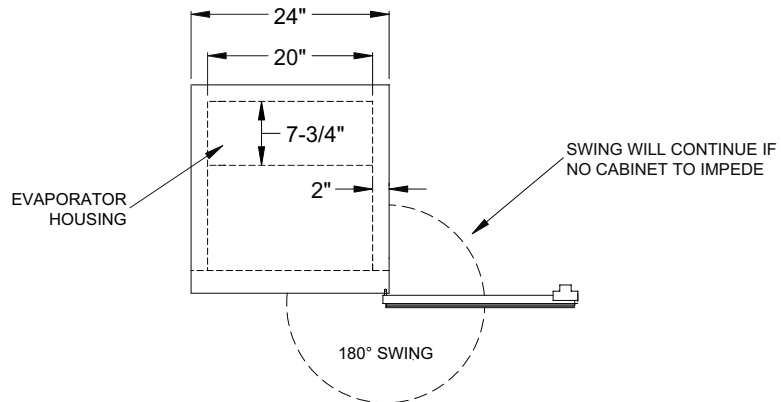
- 22 gauge stainless steel parts include: interior floor, walls, ceiling, front of cabinet, and evaporator housing
- 22 gauge black vinyl-clad parts include: sides, standard door, and compressor compartment housing
- 22 gauge galvanized steel parts include: exterior sub-top and back
- 16 gauge stainless steel parts include: legs
- 16 gauge galvanized steel parts include: base
- 12 gauge stainless steel parts include: hinges, hinge brackets, and lock brackets

Glastender, Inc. • 5400 North Michigan Road • Saginaw, MI • 48604-9780 989.752.4275 • 800.748.0423 • Fax 989.752.4444 www.glastender.com	Approval/Notes: _____
Specifications subject to change without notice. For current specifications please visit our website.	

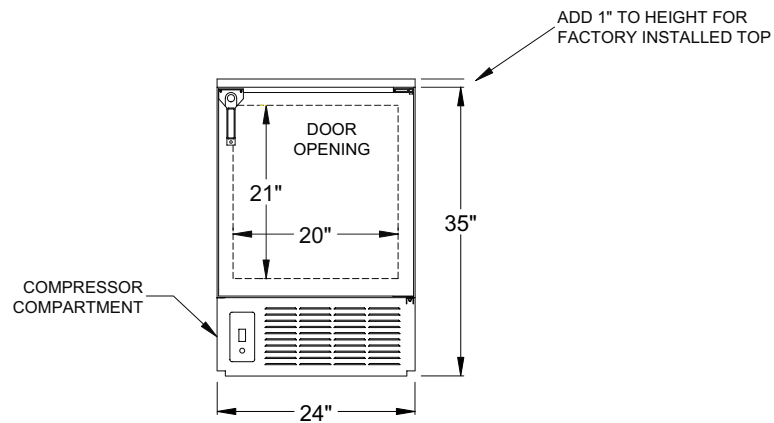
Reach-In Mug Chiller

Dimensional Information

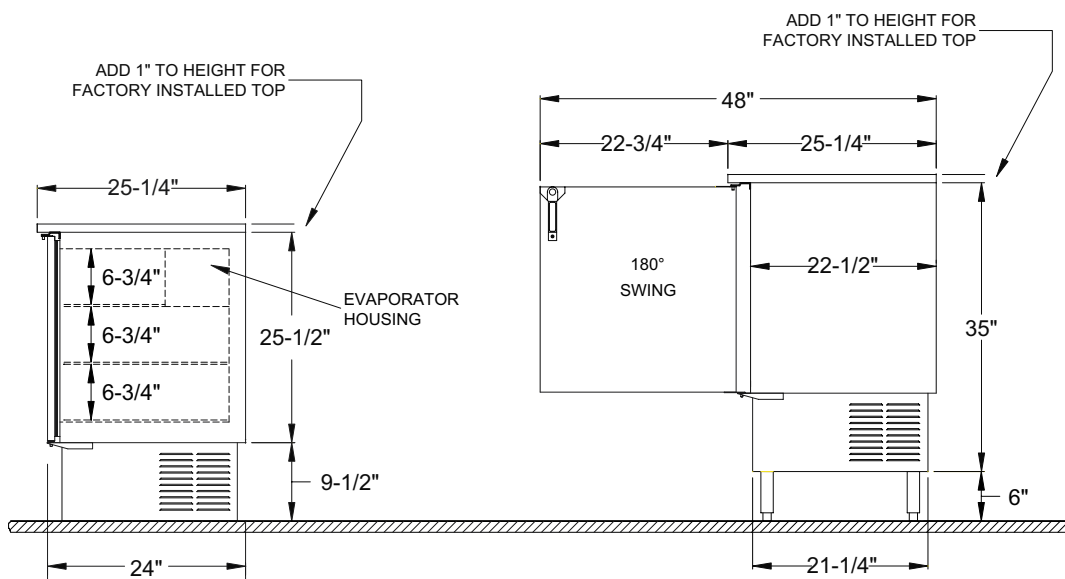
PLAN VIEW



FRONT VIEW



SIDE VIEWS



STANDARD CABINET

WITH OPTIONAL 6" LEGS