

Project \_\_\_\_\_

Item # \_\_\_\_\_

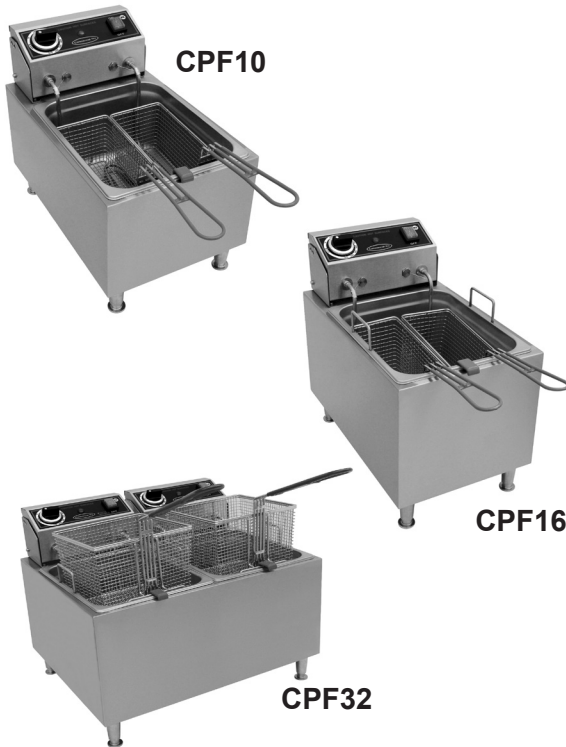
Quantity \_\_\_\_\_



GLOBE FOOD EQUIPMENT COMPANY

Electric Countertop Fryers

CPF10 / CPF16 / CPF32



## Electric Countertop Fryers

*Globe.*

*The ULTIMATE in  
Countertop Equipment*

### Model

- ☐ CPF10 Countertop Electric Fryer
- ☐ CPF16 Countertop Electric Fryer
- ☐ CPF32 Countertop Electric Fryer



### Standard Features

- Stainless steel construction
- 70°F – 375°F thermostat
- Thermal limit control with “Hi Limit” control and reset
- Removable, easy-to-clean control box and element
- 3½" stainless steel adjustable feet
- Removable, easy-to-clean oil pan
- Two chrome-plated fry baskets with insulated handles
- Built-in nesting hooks
- Swing-up element
- Easy-to-lift out fry pot
- 4-foot power cord (dual power cords on the CPF32)

### Oil Capacity

Model: CPF10 - Oil Capacity = 10 lbs.  
 Model: CPF16 - Oil Capacity = 16 lbs.  
 Model: CPF32 - Oil Capacity = 32 lbs. (dual tank)

### Food Product Capacity

Model: CPF10 - Food Product Capacity = 10 lbs.  
 Model: CPF16 - Food Product Capacity = 25 lbs.  
 Model: CPF32 - Food Product Oil Capacity = 50 lbs.  
 (dual tanks)

### Applications

- Designed for entry level and lighter duty cooking applications
- Produces 10 to 50 lbs of fries per hour – frozen to finish – depending on model
- 10 lb model can be plugged into standard 120-volt, 15-amp outlet
- Deep fries product in limited quantities such as: french fries, onion rings, chicken, donuts, fish fillets, shrimp, etc.

### Standard Warranty

- Carry-in Warranty:  
One-year parts and labor or replacement

Approved By: \_\_\_\_\_

Date: \_\_\_\_\_



**GLOBE FOOD EQUIPMENT COMPANY**

[www.globeslicers.com](http://www.globeslicers.com)

2153 Dryden Rd.  
 Dayton, OH 45439  
 Phone: 937-299-5493  
 Phone: 800-347-5423  
 Fax: 937-299-4147



# Electric Countertop Fryers CPF10 / CPF16 / CPF32

## For Indoor Use Only

### Electrical:

**CPF10** - 120V, 1700W, 14amps

**CPF16** - 208-240V,

2.9W, 13.9amps

3.8W, 15.8amps

**CPF32** - 208-240V, (dual cords and plugs)

2 X 2.9W, 13.9/13.9amps

2 X 3.8W, 15.8/15.8amps

**Cord and Plug:** 4-foot flexible, three-wire cord with ground plug

CPF10 (5-15P)

CPF16 (6-20P)

CPF32 (6-20P dual cords and plugs)

**Standard Equipment:** Standard equipment includes fryer bed, fryer baskets, easy-to-remove oil pan and built in nesting hook(s).

## Specifications

### Oil and Product Capacity

CPF10 - Oil Capacity = 10 lbs.

CPF10 - Food Product Capacity = 10 lbs.

CPF16 - Oil Capacity = 16 lbs.

CPF16 - Food Product Capacity = 25 lbs.

CPF32 - Oil Capacity = 32 lbs.

CPF32 - Food Product Capacity = 50 lbs.

Complete with dual tanks

### Thermostat:

Maintains oil/fat temperature for cooking from 70°F - 375°F.

**Thermal Limit Control HI LIMIT:** Detects high temperature limits and automatically shuts off the fryer.

### Dimensions CPF10:

Foot Print = 17.5" x 11.2"

(44.5cm x 28.4cm)

Overall Length = 17.5" (44.5cm)

Overall Width = 11.2" (28.4cm)

Overall Height = 14.9" (34.8cm)

### Shipping Information:

Net Weight: 16.8 lbs (7.6kg)

Shipping Weight: 20.3 lbs (9.2 kg)

### Shipping Dimensions:

21.5"W x 14.8"D x 16.2"H

(54.5 cm x 37.5 cm x 41 cm)

### Dimensions CPF16:

Foot Print = 17.5" x 11.2"

(44.5cm x 28.4cm)

Overall Length = 17.5" (44.5cm)

Overall Width = 11.2" (28.4cm)

Overall Height = 16.5" (41.9cm)

### Shipping Information:

Net Weight: 19.2 lbs (8.7 kg)

Shipping Weight: 22.7 lbs (10.3 kg)

### Shipping Dimensions:

21.5"W x 14.8"D x 18"H

(54.5 cm x 37.5 cm x 45.5 cm)

### Dimensions CPF32:

Foot Print = 17.5" x 21.8"

(44.5cm x 55.4cm)

Overall Length = 17.5" (44.5cm)

Overall Width = 21.8" (28.4cm)

Overall Height = 16.5" (41.9cm)

### Shipping Information:

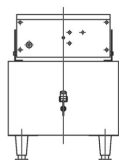
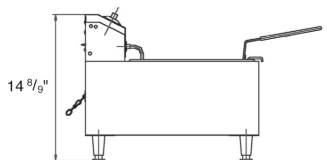
Net Weight: 29.2 lbs (13.2kg)

Shipping Weight: 33.1 lbs (15 kg)

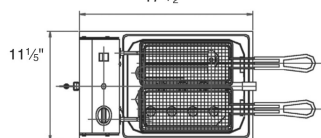
### Shipping Dimensions:

25.4"W x 21.5"D x 17.6"H

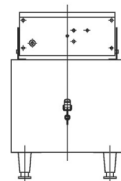
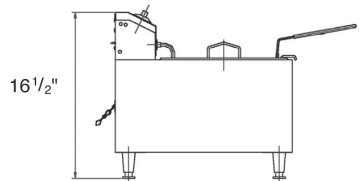
(64.5 cm x 54.5 cm x 44.5 cm)



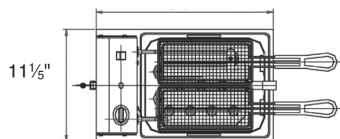
CPF10



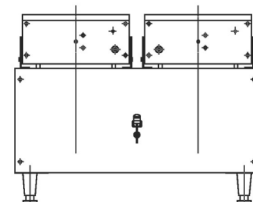
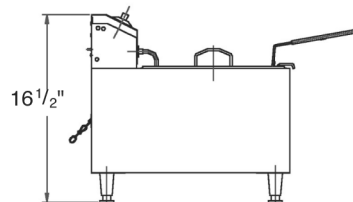
Basket size: 4 1/2"W x 9 1/2"D x 4"H



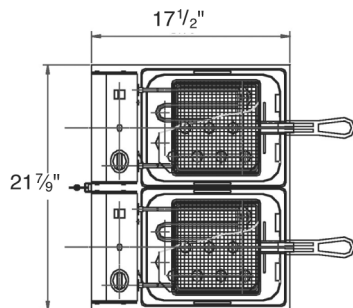
CPF16



Basket size: 4 1/2"W x 9 1/2"D x 6"H



CPF32



Basket size: 8 7/9"W x 8 7/9"D x 6 7/9"H

Cartons are reinforced for shipping. The weight and dimensions of this reinforced carton are included above and may vary from shipment to shipment.



**GLOBE FOOD EQUIPMENT COMPANY**

[www.globeslicers.com](http://www.globeslicers.com)

2153 Dryden Rd.  
Dayton, OH 45439  
Phone: 937-299-5493  
Phone: 800-347-5423  
Fax: 937-299-4147

Specifications are subject to change without notice.