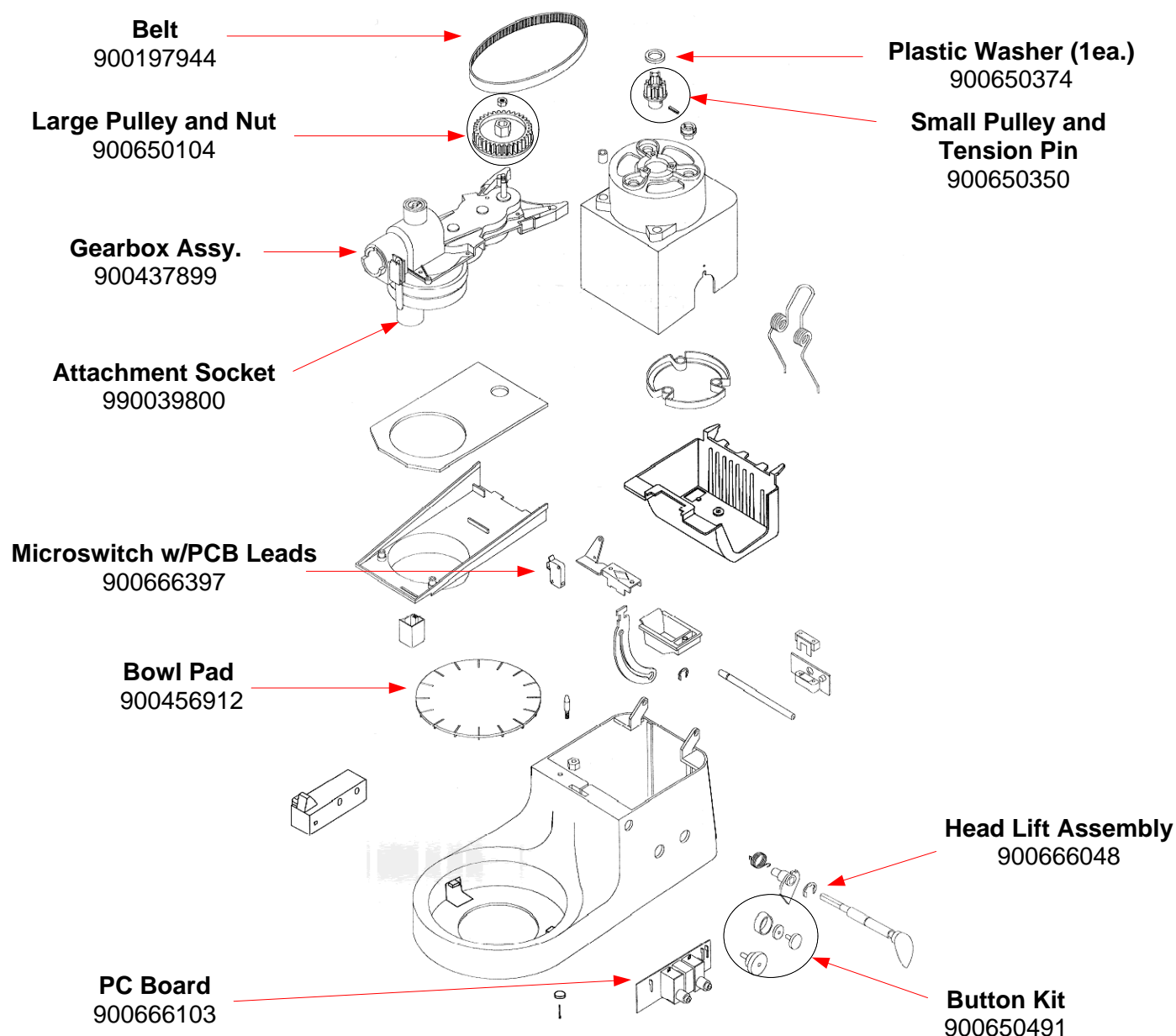


REPLACEMENT PARTS DIAGRAM

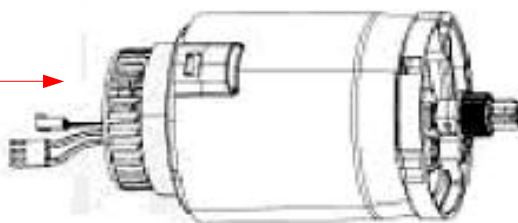
PROPRIETARY RIGHTS NOTICE This document and all information contained within it is the property of Hamilton Beach/Proctor-Silex, Inc. (HB/PS). It is confidential and proprietary and has been provided to you for a limited purpose. It must be returned upon request or destroyed as set forth in the Specification Notice. Disclosure, reproduction or use of this document and any information contained within it, in full or in part, for any purpose is forbidden without the prior written consent of HB/PS. No photographs may be taken of any article fabricated or assembled from this document without the prior written consent of HB/PS.



HAMILTON BEACH / PROCTOR-SILEX, INC. 4421 WATERFRONT DRIVE GLEN ALLEN, VA 23060		HQE-4953: Production Release.			ISSUE CODE	
DRAWN BY: SN	ENG. IN CHG. JOS	DATE: 04/17/07	APPROVED BY:		SP	CS
INITIAL USE: CPM700, CPM700SY	PICT. REF. GS01	SHEET 1 / 2	DRAWING NO. 510013500	REV. A		

REPLACEMENT PARTS DIAGRAM

Motor Complete
900665719

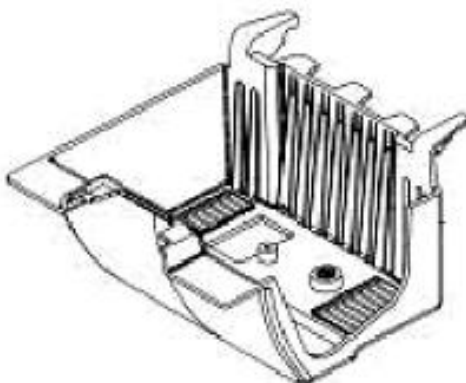


Brush and Spring Set
900660018

Speed Control Knob
900660056



Speed Control Module
900660393



HAMILTON BEACH / PROCTOR-SILEX, INC.
4421 WATERFRONT DRIVE GLEN ALLEN, VA 23060

HQE-4953: Production Release.

ISSUE CODE

DRAWN BY: SN	ENG. IN CHG. JOS	DATE: 04/17/07	APPROVED BY:		SP	CS
INITIAL USE: CPM700, CPM700SY	PICT. REF. GS01	SHEET 2 / 2	DRAWING NO. 510013500	REV. A		