



---

---

**Henny  
Penny**

**Henny Penny**  
**Automatic Breeding Machine**  
**Model BM-110**  
**Product Number 03014**



---

# **SERVICE MANUAL**

---

## OPERATING INSTRUCTIONS

---

1. Turn On/Off switch to the ON position.
2. Place breading into drum. Drum will hold up to 10 pounds of breading.
3. Feed raw moist product into hopper assembly.
4. Product will emerge from the other end of drum.
5. Place product into pan or wire grid for frying process.

### WARNING

Do not place hands or objects into drum while machine is operating.

## CLEANING (Refer to Exploded View)

---

1. Remove hopper (item 32) and hopper stand (item 33) from unit.
2. Disassemble end caps (item 36), blade assembly (item 34), and cylinder assembly (item 35) from drum (item 37). All of these items can be taken to a sink for easy cleaning.
3. Clean base of unit with a soft cloth and soapy water.

### CAUTION

Avoid getting water into motor and drive compartment.

# MAINTENANCE INSTRUCTIONS

The following information will assist you when replacing components within the unit becomes necessary.  
(Refer to exploded drawing.)

## WARNING

Place On/Off switch in the Off position and unplug the power cord from the wall receptacle before attempting any replacement of components within this unit.

### ON/OFF SWITCH

1. Remove screws holding base cover to unit and remove.
2. Remove the switch mounting nut, locknut, the On/Off plate, and remove the switch.
3. Place wires on new switch exactly as they were on the old switch.
4. Replace mounting nut, On/Off plate, and locknut, then tighten.

### LARGE SPROCKET

1. Remove screws holding base cover to unit and remove.
2. Using a 1/8" allen wrench, remove outer aluminum wheel and spacer from drive shaft.
3. Remove master link from chain and remove chain.
4. Slide drive shaft out and using a 3/32" allen wrench, loosen set screws and remove large sprocket from drive shaft.
5. Replace large sprocket and assemble by reversing the above order.

## NOTE

Install new sprocket on drive shaft at the same location as old sprocket.

### SMALL SPROCKET

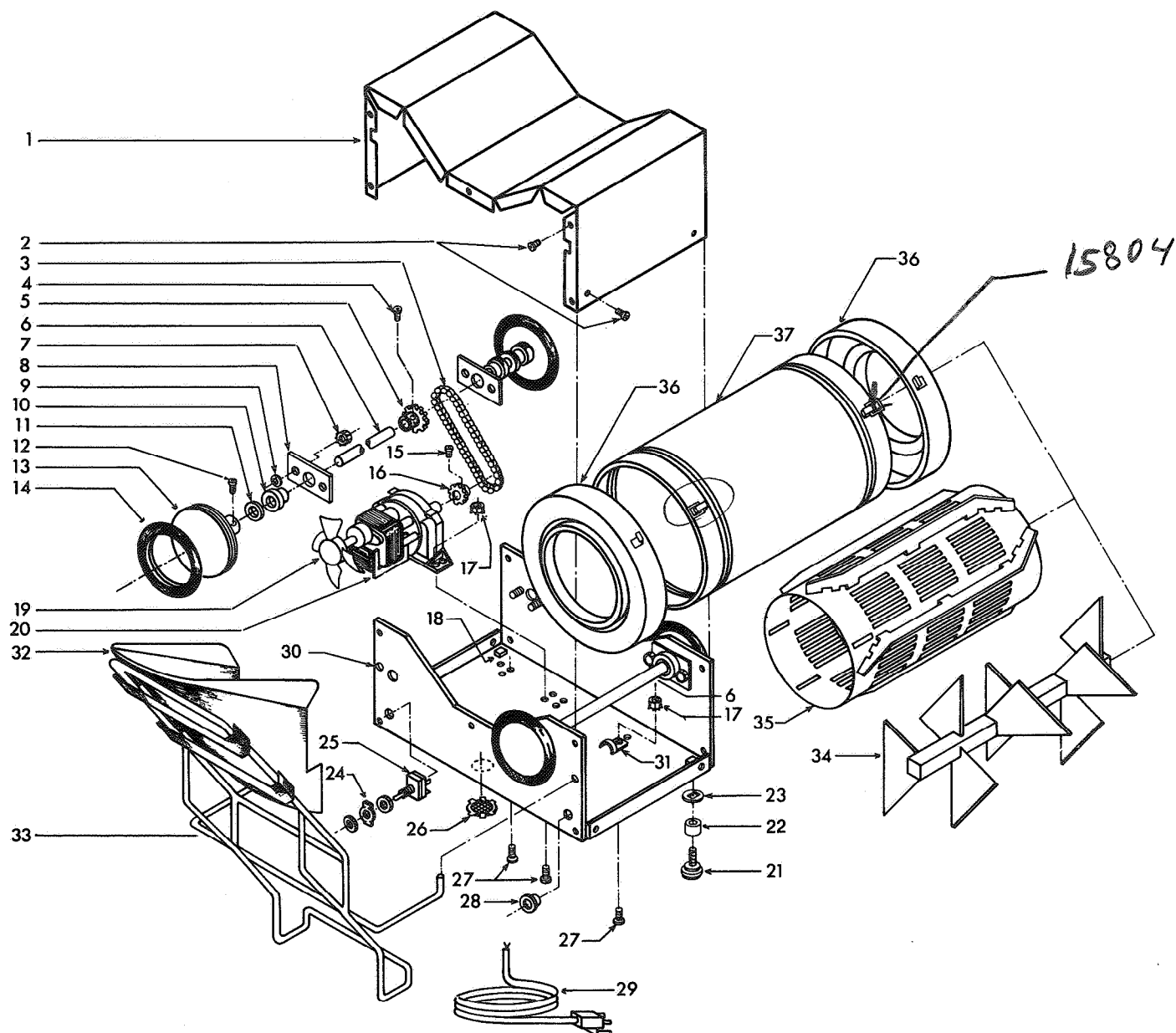
1. Remove screws holding base cover to unit and remove.
2. Remove master link from chain and remove chain.
3. Using a 3/32" allen wrench, loosen set screw and remove small sprocket from motor.
4. Install new sprocket to motor.

### MOTOR

1. Remove screws holding base cover to unit and remove.
2. Loosen wire nut from motor wires and remove motor wires.
3. Using a 3/8" wrench and a phillips head screwdriver, remove four screws and nuts holding motor to base.
4. Install new motor.
5. Place old fan blade on new motor.

## NOTE

Be sure motor wires are secure in wire nut. Use electrical tape to hold nut.



## PARTS LIST

No.	Part No.	Description	Qty.	No.	Part No.	Description	Qty.
1	15859	Base Cover	1	20	15021	Motor - 120V	1
2	SC03-005	8 x 1/2 PH	14	21	26411	Foot	4
3	15020	Chain	1	22	26386	Foot Spacer	4
4	SC05-001	1/4 -20 x 3/8	4	23	15022	Foot Leveler	4
5	15013	Large Sprocket	1	24	22197	ON/OFF Plate	1
6	15014	Drive Shaft	2	25	22195	Switch (includes lock nut and mounting nut)	1
7	NS02-002	1/4 x 20 Nut	8	26	PL01-002	Vent Plug	1
8	15011	Bearing Retainer	4	27	SC01-002	10-32 x 1/2	5
9	LW01-002	Split Ring Washer	8	28	EF02-017	Strain Relief	1
10	15019	Bearing - White Nyliner	4	29	15063	Power Cord	1
11	15018	Wheel Spacer	4	30	15862	Base (with studs)	1
12	SC05-001	1/4 -20 x 3/8	4	31	EF02-015	Clip 3/8	1
13	15016	Aluminum Wheel	4	32	15003	Hopper Ass'y	1
14	15017	Rubber Tire	4	33	15004	Hopper Stand	1
15	SC05-003	10-32 x 1/8	4	34	15036	Blade Ass'y	1
16	15012	Small Sprocket	1	35	15029	Cylinder Ass'y	1
17	NS02-001	10-32 Hex Nut	5	36	15045	End Cap	2
18	NS03-013	Cage Nut 3/8	4	37	15031	Drum	1
19	15023	Fan Blade	1				