



Henny Penny Oil Disposal Shuttle ODS-300.02 ODS-300.03

(Translated Documents Available On CD within Manual)

OPERATOR'S MANUAL

REGISTER WARRANTY ONLINE AT WWW.HENNYPENNY.COM

LIMITED WARRANTY FOR HENNY PENNY EQUIPMENT

Subject to the following conditions, Henny Penny Corporation makes the following limited warranties to the original purchaser only for Henny Penny appliances and replacement parts:

NEW EQUIPMENT: Any part of a new appliance, except baskets, lamps, and fuses, which proves to be defective in material or workmanship within two (2) years from date of original installation, will be repaired or replaced without charge F.O.B. factory, Eaton, Ohio, or F.O.B. authorized distributor. Baskets will be repaired or replaced for ninety (90) days from date of original installation. Lamps and fuses are not covered under this Limited Warranty. To validate this warranty, the registration card for the appliance must be mailed to Henny Penny within ten (10) days after installation.

FILTER SYSTEM: Failure of any parts within a fryer filter system caused by the use of the non-OEM filters or other unapproved filters is not covered under this Limited Warranty.

REPLACEMENT PARTS: Any appliance replacement part, except lamps and fuses, which proves to be defective in material or workmanship within ninety (90) days from date of original installation will be repaired or replaced without charge F.O.B. factory, Eaton, Ohio, or F.O.B. authorized distributor.

The warranty for new equipment covers the repair or replacement of the defective part and includes labor charges and maximum mileage charges of 200 miles round trip for a period of one (1) year from the date of original installation.

The warranty for replacement parts covers only the repair or replacement of the defective part and does not include any labor charges for the removal and installation of any parts, travel, or other expenses incidental to the repair or replacement of a part.

EXTENDED FRYPOT WARRANTY: Henny Penny will replace any frypot that fails due to manufacturing or workmanship issues for a period of up to seven (7) years from date of manufacture. This warranty shall not cover any frypot that fails due to any misuse or abuse, such as heating of the frypot without shortening.

0 TO 3 YEARS: During this time, any frypot that fails due to manufacturing or workmanship issues will be replaced at no charge for parts, labor, or freight. Henny Penny will either install a new frypot at no cost or provide a new or reconditioned replacement fryer at no cost.

3 TO 7 YEARS: During this time, any frypot that fails due to manufacturing or workmanship issues will be replaced at no charge for the frypot only. Any freight charges and labor costs to install the new frypot as well as the cost of any other parts replaced, such as insulation, thermal sensors, high limits, fittings, and hardware, will be the responsibility of the owner.

Any claim must be presented to either Henny Penny or the distributor from whom the appliance was purchased. No allowance will be granted for repairs made by anyone else without Henny Penny's written consent. If damage occurs during shipping, notify the sender at once so that a claim may be filed.

THE ABOVE LIMITED WARRANTY SETS FORTH THE SOLE REMEDY AGAINST HENNY PENNY FOR ANY BREACH OF WARRANTY OR OTHER TERM. BUYER AGREES THAT NO OTHER REMEDY (INCLUDING CLAIMS FOR ANY INCIDENTAL OR CONSEQUENTIAL DAMAGES) SHALL BE AVAILABLE.

The above limited warranty does not apply (a) to damage resulting from accident, alteration, misuse, or abuse; (b) if the equipment's serial number is removed or defaced; or (c) for lamps and fuses. THE ABOVE LIMITED WARRANTY IS EXPRESSLY IN LIEU OF ALL OTHER WARRANTIES, EXPRESS OR IMPLIED, INCLUDING MERCHANTABILITY AND FITNESS, AND ALL OTHER WARRANTIES ARE EXCLUDED. HENNY PENNY NEITHER ASSUMES NOR AUTHORIZES ANY PERSON TO ASSUME FOR IT ANY OTHER OBLIGATION OR LIABILITY.

Revised 01/01/07

TABLE OF CONTENTS

Section	Page
Section 1. INTRODUCTION	1-1
1-1. Introduction.....	1-1
1-2. Features	1-1
1-3. Proper Care	1-1
1-4. Assistance	1-1
1-5. Safety	1-2
 Section 2. ASSEMBLY	 2-1
 Section 3. OPERATION.....	 3-1
 Section 4. PART INFORMATION	 4-1
4-1. Introduction.....	4-1
4-2. Genuine Parts	4-1
4-3. How to Order	4-1
4-4. Prices.....	4-1
4-5. Delivery.....	4-1
4-6. Warranty	4-1
4-7. Recommended Spare Parts for Distributors.....	4-1

SECTION 1. SAFETY

Where information is of particular importance or is safety related, the words NOTICE, CAUTION, or WARNING are used. Their usage is described below:



SAFETY ALERT SYMBOL is used with DANGER, WARNING, or CAUTION which indicates a personal injury type hazard.



NOTICE is used to highlight especially important information.



CAUTION used without the safety alert symbol indicates a potentially hazardous situation which, if not avoided, may result in property damage.



CAUTION used with the safety alert symbol indicates a potentially hazardous situation which, if not avoided, may result in minor or moderate injury.



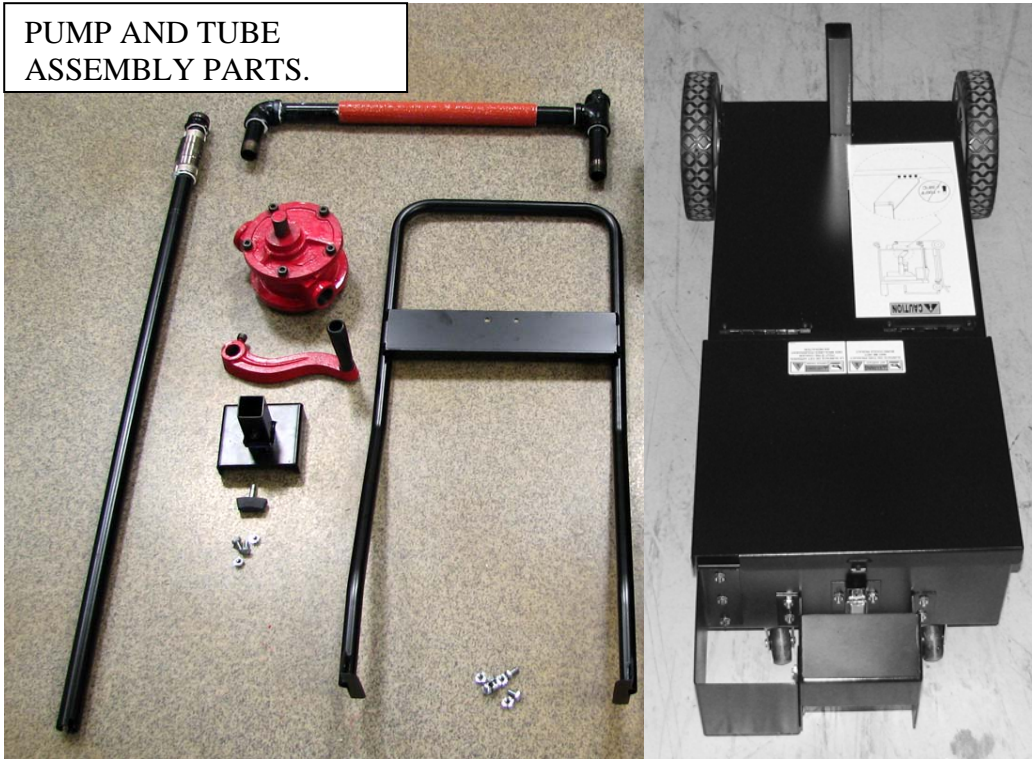
WARNING indicates a potentially hazardous situation which, if not avoided, could result in death or serious injury.



DANGER INDICATES AN IMMINENTLY HAZARDOUS SITUATION WHICH, IF NOT AVOIDED, WILL RESULT IN DEATH OR SERIOUS INJURY.

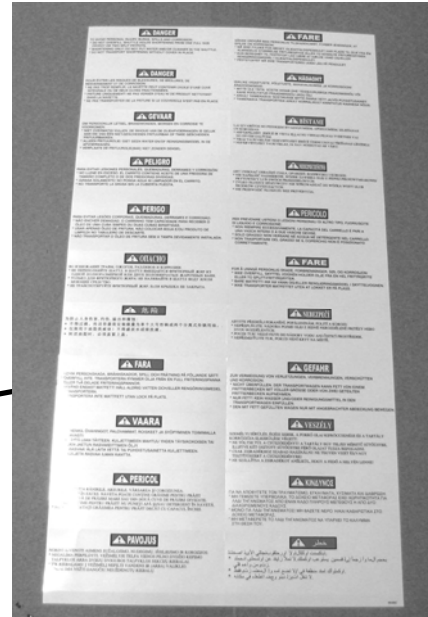
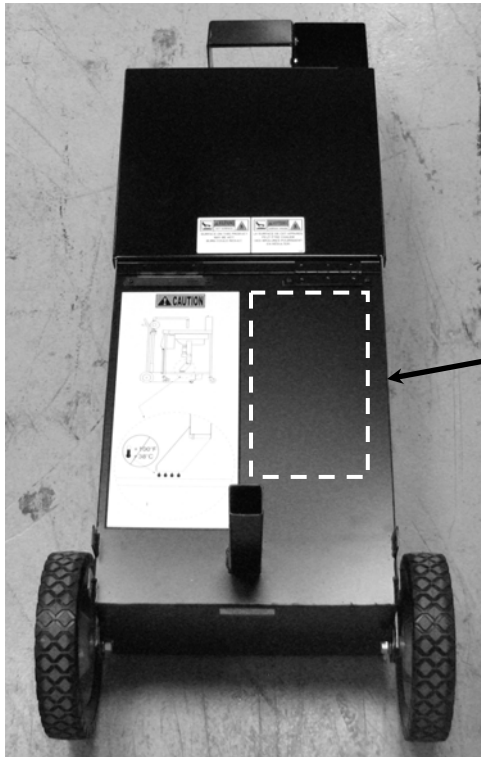
SECTION 2. ASSEMBLY

PUMP AND TUBE
ASSEMBLY PARTS.

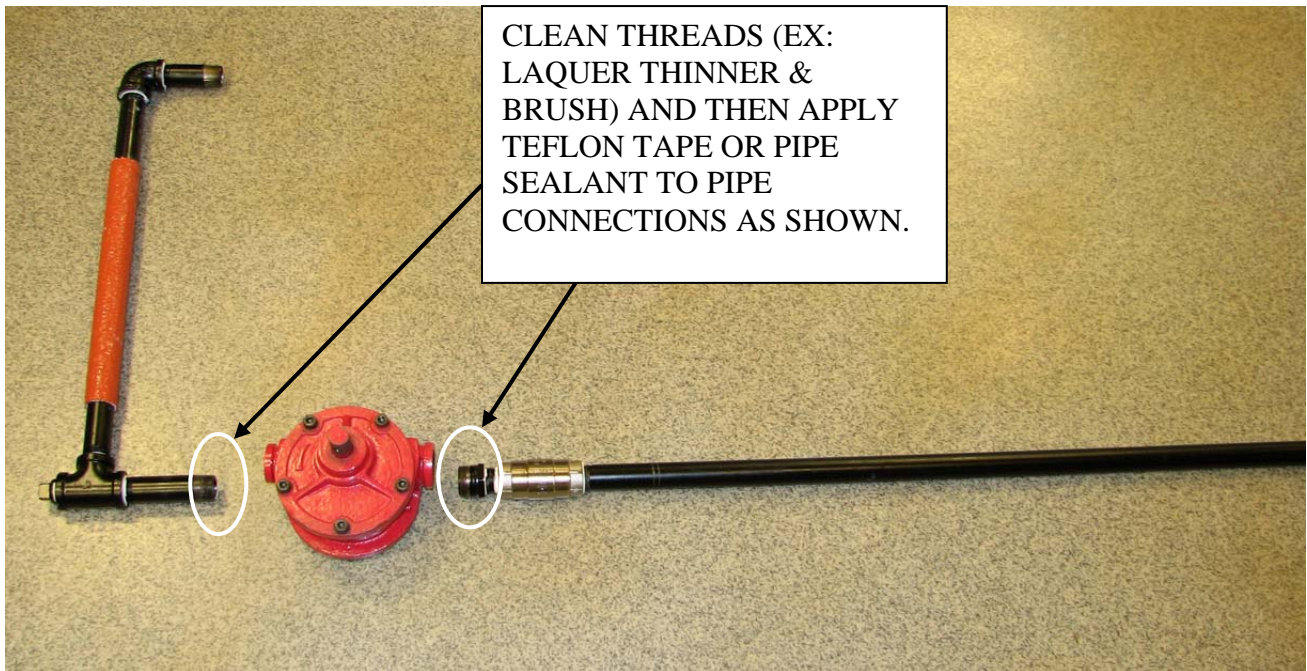


REMOVE THESE PARTS
AND DISCARD, THEY
ARE NOT USED.





LOCATE THE SHEET OF DANGER LABELS IN UNIT. LOCATE THE LANGUAGE(S) YOU DESIRE ON THE LABEL AND PLACE THAT LABEL ONTO THE AREA PROVIDED (DOTTED LINES) ON THE ODS-300 COVER.



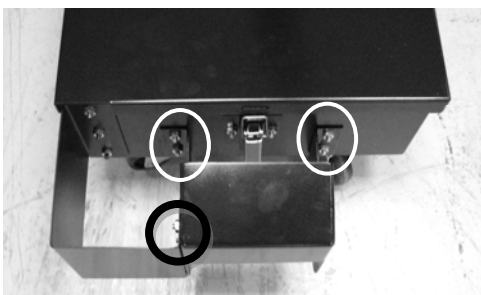
CLEAN THREADS (EX: LAQUER THINNER & BRUSH) AND THEN APPLY TEFLON TAPE OR PIPE SEALANT TO PIPE CONNECTIONS AS SHOWN.



TAKE BLACK PIPE ASSEMBLY AND ATTACH TO TOP OF PUMP AS SHOWN USING TEFLON TAPE. TURN UNTIL TIGHT AND LINED UP AS SHOWN BELOW.



SECTION 3. OPERATION



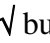
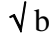


1. Release cover latch and hinge cover back on oil disposal shuttle. Make sure crumb catcher is in place.
2. Remove filter drain pan assembly from under fryer and roll oil disposal shuttle under fryer until it stops. Make sure drain aligns with opening in shuttle.



TO AVOID PERSONAL INJURY, BURNS, SPILLS, AND CORROSION:

- **DO NOT OVERFILL. SHUTTLE HOLDS OIL FROM ONE FULLSIZE FRYPOT OR TWO SPLIT FRYPOTS**
- **SHORTENING ONLY! DO NOT PUT WATER AND/OR CLEANER IN THE SHUTTLE**
- **DO NOT TRANSPORT OIL WITHOUT COVER IN PLACE**

3. Press and hold  (on either side) until display shows *FILTER MENU*, along with "1.AUTO FILTER?".
4. Press and release  twice until display shows "3.DISPOSE". Press  button and display shows "DISPOSE?" along with "YES NO".
5. With oil disposal shuttle rolled into place, press & hold  button and displays shows "DISPOSING". Oil now drains from the vat into the shuttle.



On LVE/LVG-10X fryers, if oil disposal shuttle is not properly in place, "IS DISPOSAL UNIT IN PLACE?" shows in display. Adjust center bracket on the front of shuttle as needed by loosening 6 nuts holding bracket and moving bracket up or down. Once properly adjusted, the display shows "DISPOSING".

6. Display shows VAT EMTY, along with “YES NO”. Verify that vat is empty, and press √ button.
7. Display shows “CLN VAT COMPLETE”, along with “YES NO”. Once vat is clean, press √ button.
8. Display shows “MANUAL FILL POT”, followed by “VAT FULL”, along with “YES NO”. Fill the vat to the lower indicator line on the rear of the vat and then press √ button. Controls return to normal operation.



9. Remove the oil disposal shuttle from under fryer and replace with the filter pan assembly.



10. Replace and latch the cover and roll oil disposal shuttle to disposal container.



To avoid burns and personal injury, allow oil to cool to 100°F (38 °C) or below before transporting shuttle to the disposal area.

11. Turn thumb screw on bracket to loosen pump assembly.
12. Swivel pump assembly over disposal container and tighten thumb screw on bracket.

13. Turn pump handle rapidly (fast) in order to prime the pump and to get oil to flow through pump.

CAUTION

To avoid damage to pump,

- *only pump oil at **100°F (38°C)** or below*
- *do not pump water or water-based liquids*

14. Once shuttle is empty, loosen thumb screw on bracket and swivel pump assembly back over lower unit and tighten handle.



CLEANING

15. Daily, remove the crumb catcher and take it to a sink and clean with soap and water. Clean the exterior of the shuttle with a soft cloth and soap and water. It's not necessary to clean the interior of the unit, but if desired, it can be wiped down with paper towels.

CAUTION

To avoid damage to pump, do not use water or water-based liquids to clean the interior of the shuttle.

SECTION 4. PARTS INFORMATION

4-1. INTRODUCTION

This section identifies and lists the replaceable parts of the Henny Penny ODS-300, Oil Disposal Shuttle.

4-2. GENUINE PARTS

Use only genuine Henny Penny parts in your unit. Using a part of lesser quality or substitute design may result in unit damage or personal injury.

4-3. HOW TO FIND PARTS

To find items you want to order from the Parts List, proceed as follows:

1. Refer to the exploded drawing in this section to identify the part needed.
2. Use the item number from the exploded drawing to locate the corresponding part in the parts list in this section. In this list will be the Henny Penny part number and description of the part.

4-4. HOW TO ORDER PARTS

Once the part you want to order has been found in the Part List, write down the following information:

1. From the exploded drawing and Parts List (Sample)

Item Number	7
Part Number	77237
Description	ASSY -COVER LVE DRAIN PAN DOLLY
2. From the data plate (Sample)

Serial Number	00100
---------------	-------

4-5. PRICES

Your distributor has a price parts list and will be glad to inform you of the cost of your parts order.

4-6. DELIVERY

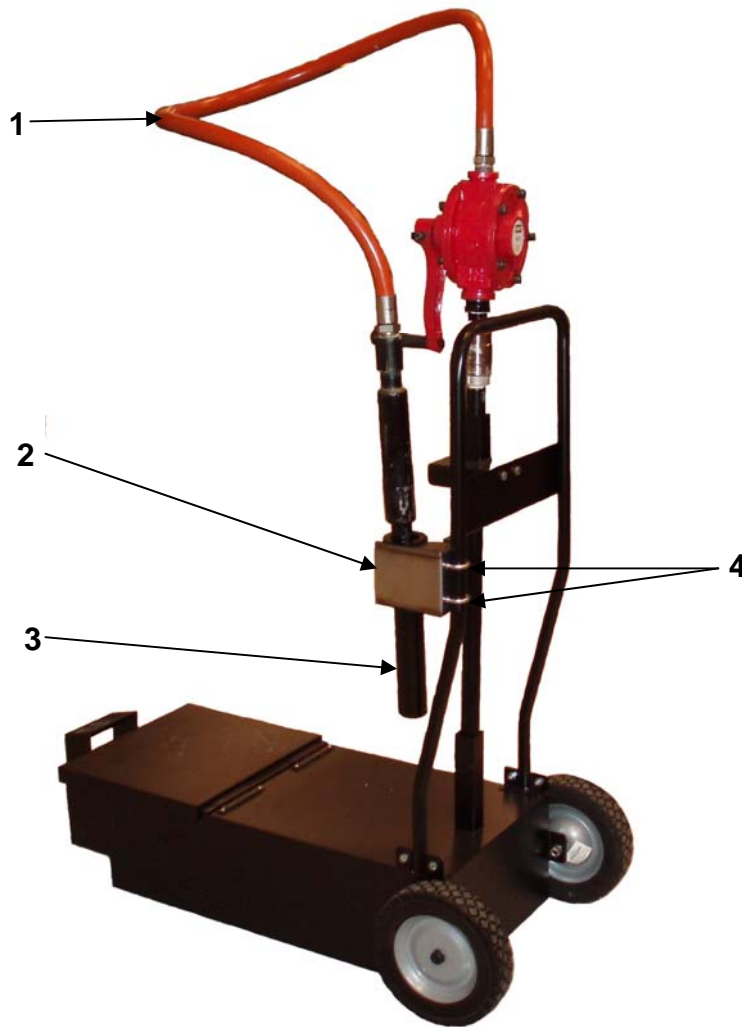
Commonly replaced items are stocked by your independent Henny Penny distributor and will be sent out when your order is received. Other parts will be ordered by the distributor from Henny Penny Corporation. Normally, these will be sent to your distributor within three working days.

4-7. WARRANTY

All replacement parts (except lamps and fuses) are covered under warranty for 90 days against manufacturing defects and workmanship. If damage occurs during shipping, notify the carrier at once so that a claim may be properly filed. Refer to the warranty in this manual for other rights and limitations.

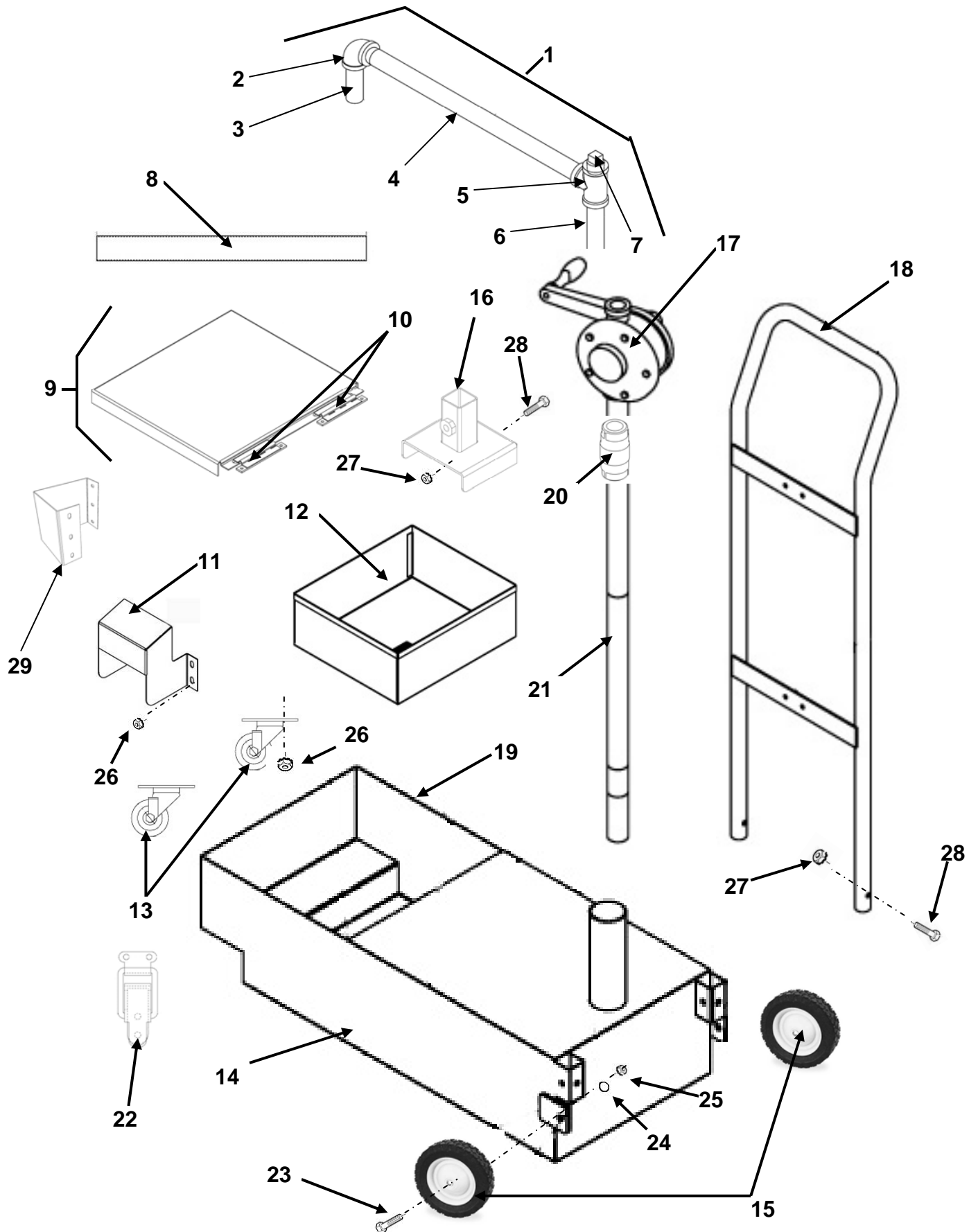
4-8. RECOMMENDED SPARE PARTS FOR DISTRIBUTORS

Recommended replacement parts, stocked by your distributor, are indicated with √ in the parts lists. Please use care when ordering recommended parts, because all voltages and variations are marked. Distributors should order parts based upon common voltages and equipment sold in their territory.

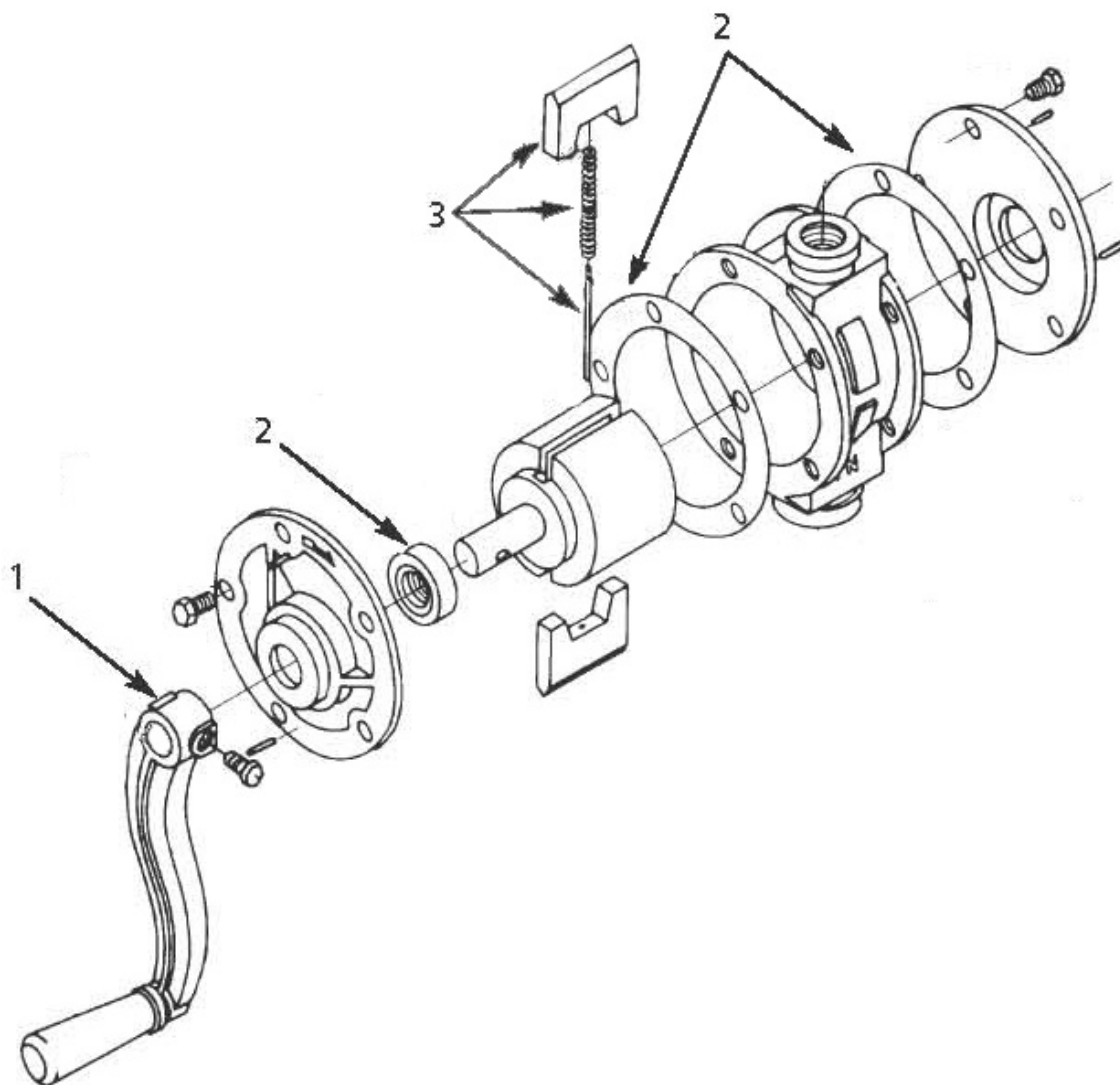


Item Number	Part Number	Description	Qty
--	03616	FILTER HOSE ACCESSORY	--
1	81066	FILTER HOSE ASSY	1
2	85135	HOLDER BRACKET	1
3	80995	FILTER HOSE HOLDER	1
4	SC06-013	U-BOLTS	2
5*	NS02-002	NUTS	4

* not shown



Item Number	Part Number	Description	Qty
1	84383	ASSY – OIL SHUTTLE DRAIN PIPE	1
2	FP01-098	ELBOW – ¾ NPT X 90 FEMALE BI	1
3	FP02-021	NIPPLE – ¾ NPT X 3 IN LG-BI	1
4	FP02-056	NIPPLE – ¾ NPT X 18.25 INCH BI	1
5	FP01-097	TEE – ¾ NPT FEMALE PIPE BI	1
6	FP02-033	NIPPLE – ¾ NPT X 4 IN LONG-BI	1
7	FP01-140	PLUG – ¾ PIPE BI	1
8	76583	SLEEVE – 12 X 1 ID SILICONE RBR	1
√ 9	84001	ASSY -- COVER ODS DRAIN PAN DOLLY	1
√ 10	83993	HINGE	2
√ 10*	SC01-113	SCREW--#6-32 X 9/16 PHILLIPS, PAN HD	4
√ 10*	NS02-005	NUT--HEX--KEPS #6-32	4
√ 11	84519	BRACKET – DRAIN SW ENGAGEMENT LV	1
√ 12	84453	BASKET – CRUMB	1
√ 13	19004	CASTER 2” SWIVEL PLATE	2
14	84003	WELD ASSY – ODS DRAIN PAN DOLLY	1
√ 15	77815	WHEEL – 8 INCH – ODS	2
16	84481	ASSY – WELD – PUMP TUBE BRACKET	1
16*	SC06-76	THUMB SCREW - M8 X 25 MM	1
√ 17	72490	PUMP – MANUAL OIL DISCARD	1
18	84368	WELD ASSY – DOLLY HANDLE	1
19	84614	SEAL – COVER	1
20	21800	CHECK VALVE – ¾ IN	1
21	84376-001	TUBE – ODS PICK-UP	1
22	MS01-532	LATCH	1
22*	SC01-049	SCREW--#6-32 X 3/8 PHILLIPS, PAN HD	2
22*	NS02-005	NUT--HEX--KEPS #6-32	2
22*	83994	BRACKET-LATCH MOUNTING	1
23	SC06-074	SCREW – ½ x 1-1/2 SHOULDER	2
24	LW01-010	LOCKWASHER – SPLIT-RING 3/8 S	2
25	NS01-001	NUT – HEX 3/8-16	2
26	NS02-006	NUT – HEX – KEPS #10-24 C	23
27	NS02-002	NUT – HEX – KEPS 1/4-20 C	4
28	SC01-057	SCREW – ¼-20 x ½ HEX HD C	4
29	88527	BRACKET-DRAIN SWITCH	1
29	SC01-038	SCREW-- 10-24 X 3/8” PHILLIPS TRUSS HD	3
30*	140121	KIT-200 SERIES ADAPTER PLATE (Converts ODS-300.02 to an ODS-300.03 for use with LVE-200) (Includes items 11, 26, 29, 31, 32, 33, & 34)	1
31*	89041	STUD ASSY-PLATE ADAPTER	1
32*	89092	BRACKET-ADAPTER	1
33*	NS02-007	NUT-#8-32 C	1
34*	SC01-034	SCREW-#8-32 X 3/8” PHILLIPS THD	1



Item Number	Part Number	Description	Qty
1	82887	ODS CRANK W/HANDLE	1
2	82885	PACK - ODS SEAL - SERVICE	1
3	82886	PACK - ODS VANES - SERVICE	1



Henny Penny Corporation
P.O.Box 60
Eaton, OH 45320

1-937-456-8400
1-937-456-8402 Fax

Toll free in USA
1-800-417-8417
1-800-417-8434 Fax

www.hennypenny.com

*** FM07 - 635 - B *** Henny Penny Corp., Eaton, Ohio 45320, Revised 10-22-10