



**Henny Penny
Automatic Breeding Machine
Model BM-110**

SERVICE MANUAL

LIMITED WARRANTY FOR HENNY PENNY EQUIPMENT

Subject to the following conditions, Henny Penny Corporation makes the following limited warranties to the original purchaser only for Henny Penny appliances and replacement parts:

NEW EQUIPMENT: Any part of a new appliance, except baskets, lamps, and fuses, which proves to be defective in material or workmanship within two (2) years from date of original installation, will be repaired or replaced without charge F.O.B. factory, Eaton, Ohio, or F.O.B. authorized distributor. Baskets will be repaired or replaced for ninety (90) days from date of original installation. Lamps and fuses are not covered under this Limited Warranty. To validate this warranty, the registration card for the appliance must be mailed to Henny Penny within ten (10) days after installation.

FILTER SYSTEM: Failure of any parts within a fryer filter system caused by the use of the non-OEM filters or other unapproved filters is not covered under this Limited Warranty.

REPLACEMENT PARTS: Any appliance replacement part, except lamps and fuses, which proves to be defective in material or workmanship within ninety (90) days from date of original installation will be repaired or replaced without charge F.O.B. factory, Eaton, Ohio, or F.O.B. authorized distributor.

The warranty for new equipment covers the repair or replacement of the defective part and includes labor charges and maximum mileage charges of 200 miles round trip for a period of one (1) year from the date of original installation.

The warranty for replacement parts covers only the repair or replacement of the defective part and does not include any labor charges for the removal and installation of any parts, travel, or other expenses incidental to the repair or replacement of a part.

EXTENDED FRYPOT WARRANTY: Henny Penny will replace any frypot that fails due to manufacturing or workmanship issues for a period of up to seven (7) years from date of manufacture. This warranty shall not cover any frypot that fails due to any misuse or abuse, such as heating of the frypot without shortening.

0 TO 3 YEARS: During this time, any frypot that fails due to manufacturing or workmanship issues will be replaced at no charge for parts, labor, or freight. Henny Penny will either install a new frypot at no cost or provide a new or reconditioned replacement fryer at no cost.

3 TO 7 YEARS: During this time, any frypot that fails due to manufacturing or workmanship issues will be replaced at no charge for the frypot only. Any freight charges and labor costs to install the new frypot as well as the cost of any other parts replaced, such as insulation, thermal sensors, high limits, fittings, and hardware, will be the responsibility of the owner.

Any claim must be presented to either Henny Penny or the distributor from whom the appliance was purchased. No allowance will be granted for repairs made by anyone else without Henny Penny's written consent. If damage occurs during shipping, notify the sender at once so that a claim may be filed.

THE ABOVE LIMITED WARRANTY SETS FORTH THE SOLE REMEDY AGAINST HENNY PENNY FOR ANY BREACH OF WARRANTY OR OTHER TERM. BUYER AGREES THAT NO OTHER REMEDY (INCLUDING CLAIMS FOR ANY INCIDENTAL OR CONSEQUENTIAL DAMAGES) SHALL BE AVAILABLE.

The above limited warranty does not apply (a) to damage resulting from accident, alteration, misuse, or abuse; (b) if the equipment's serial number is removed or defaced; or (c) for lamps and fuses. THE ABOVE LIMITED WARRANTY IS EXPRESSLY IN LIEU OF ALL OTHER WARRANTIES, EXPRESS OR IMPLIED, INCLUDING MERCHANTABILITY AND FITNESS, AND ALL OTHER WARRANTIES ARE EXCLUDED. HENNY PENNY NEITHER ASSUMES NOR AUTHORIZES ANY PERSON TO ASSUME FOR IT ANY OTHER OBLIGATION OR LIABILITY.

Revised 01/01/07

OPERATING INSTRUCTIONS

1. Turn power switch to the ON position.
2. Place breading into drum. Drum will hold up to 10 pounds of breading.
3. Feed raw moist product into hopper assembly.
4. Product will emerge from the other end of drum.
5. Place product into pan or wire grid for frying process.



Do not place hands or objects into drum while machine is operating, or personal injury or damage to unit could result.

CLEANING (Refer to Exploded View)

1. Remove hopper (32) and hopper stand (33) from unit.
2. Dissassemble end caps (36), blade assembly (34), and cylinder assembly (34), and cylinder assembly (35) from drum (37). All of these items can be taken to a sink for easy cleaning.
3. Clean base of unit with a soft cloth and soapy water.

CAUTION

Do not use steel wool, other abrasive cleaners or cleaners/sanitizers containing chlorine, bromine, iodine or ammonia chemicals, as these will deteriorate the stainless steel material and shorten the life of the unit.

Avoid getting water into motor and drive compartment, or damage to electrical components could result.

MAINTENANCE INSTRUCTIONS

The following information will assist you when replacing components within the unit becomes necessary. (Refer to exploded drawing.)



To avoid electrical shock or property damage, move the power switch to OFF and disconnect main circuit breaker, or unplug cord at wall receptacle.

POWER SWITCH

1. Remove screws holding base cover to unit and remove.
2. Remove the switch mounting nut, locknut, and the ON/OFF plate, and remove the switch.
3. Place wires on new switch exactly as they were on the old switch.
4. Replace mounting nut, ON/OFF plate, and locknut, then tighten.

LARGE SPROCKET

1. Remove screws holding base cover to unit and remove.
2. Using a 1/8" Allen wrench, remove outer aluminum wheel and spacer from drive shaft.
3. Remove master link from chain and remove chain.
4. Slide drive shaft out and using a 3/32" Allen wrench, loosen set screws and remove large sprocket from drive shaft.
5. Replace large sprocket and assemble by reversing the above order.

NOTICE

Install new sprocket on drive shaft at the same location as old sprocket.

SMALL SPROCKET

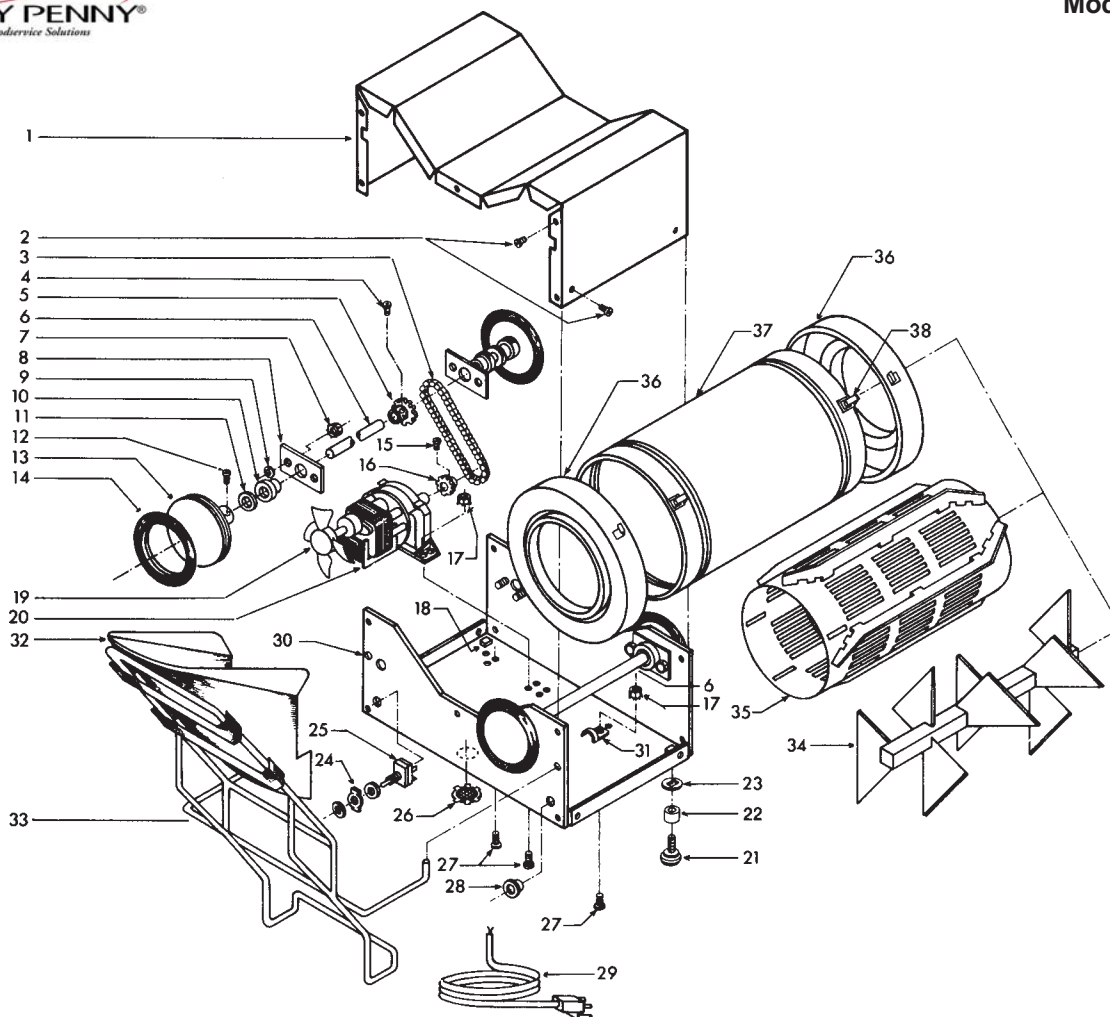
1. Remove screws holding base cover to unit and remove.
2. Remove master link from chain and remove chain.
3. Using a 3/32" Allen wrench, loosen set screw and remove small sprocket from motor.
4. Install new sprocket to motor.

MOTOR

1. Remove screws holding base cover to unit and remove.
2. Loosen wire nut from motor wires and remove motor wires.
3. Using a 3/8" wrench and a Phillips head screwdriver, remove four screws and nuts holding motor to base.
4. Install new motor.
5. Place old fan blade on new motor.

NOTICE

Be sure motor wires are secure in wire nut. Use electrical tape to hold nut.



PARTS LIST

No.	Part No.	Description	Qty.
1	15859	Base Cover	1
2	SC04-003	8 x 3/8 PH	14
✓ 3	15020	Chain	1
4	SC05-001	1/4 - 20 x 3/8	4
5	14891	Large Sprocket Kit SN: KD0705004 & above	1
5	14890	Large Sprocket Kit SN: KD0506001 - KD0705003	1
5	15006	Large Sprocket below SN: KD0506001	1
6	15014	Drive Shaft	2
7	NS02-002	1/4 x 20 Nut	8
8	15011	Bearing Retainer	4
9	LW01-002	Split Ring Washer	8
10	15019	Bearing - White Nyliner	4
11	15018	Wheel Spacer	4
12	SC05-001	1/4 - 20 x 3/8	4
✓ 13	15016	Aluminum Wheel	4
✓ 14	15017	Rubber Tire	4
15	SC05-003	10-32 x 1/8	4
16	14889	Small Sprocket Kit SN: KD0506001 & above	1
16	15024	Small Sprocket below SN: KD0506001	1
17	NS02-001	10-32 Hex Nut	5
18	NS03-013	Cage Nut 3/8	4

✓ recommended parts

No.	Part No.	Description	Qty.
19	15023	Fan Blade below SN: KD0506001	1
✓ 20	75770	Motor - 120/240V SN: KD0705004 & above	1
✓ 20	14722	Kit-Motor Replacement SN: KD0705003 & below	1
21	26411	Foot	4
22	26386	Foot Spacer	4
23	15022	Foot Leveler	4
24	22197	ON/OFF Plate	1
✓ 25	22195	Switch (w/lock & mntg. nuts)	1
26	PL01-002	Vent Plug	1
27	SC01-002	10-32 x 1/2	5
28	EF02-017	Strain Relief	1
29	15063	Power Cord	1
30	15862	Base	1
31	EF02-015	Clip 3/8	1
32	15003	Hopper Ass'y	1
33	15004	Hopper Stand	1
34	15036	Blade Ass'y	1
35	15029	Cylinder Ass'y	1
36	15045	End Cap	2
37	15031	Drum	1
✓ 38	MS01-532	Latch SN: KD0609014 & above	4
✓ 38	15804	Latch SN: KD0609013 & below	4



Henny Penny Corporation
P.O.Box 60
Eaton, OH 45320

1-937-456-8400
1-937-456-8402 Fax

Toll free in USA
1-800-417-8417
1-800-417-8434 Fax

www.hennypenny.com

FM07-018-E Henny Penny Corp., Eaton, Ohio 45320, Revised 10-18-07