

## SECTION 3. PARTS INFORMATION

### **3-1. INTRODUCTION**

This section lists the replaceable parts of the Henny Penny Island Warmer.

### **3-2. GENUINE PARTS**

Use only genuine Henny Penny parts in your warmer. Using a part of lesser quality or substitute design may result in damage to the unit or personal injury.

### **3-3. WHEN ORDERING PARTS**

Once the parts that you want to order have been found in the parts list, write down the following information:

(Sample)

Item Number 3

Part Number 39795

Description Lamp Holder

From the data plate, list the following information:

(Sample)

Product Number HMI105.0

Serial Number 0001

Voltage 120/208

### **3-4. PRICES**

Your distributor has a price parts list and will be glad to inform you of the cost of your parts order.

### **3-5. DELIVERY**

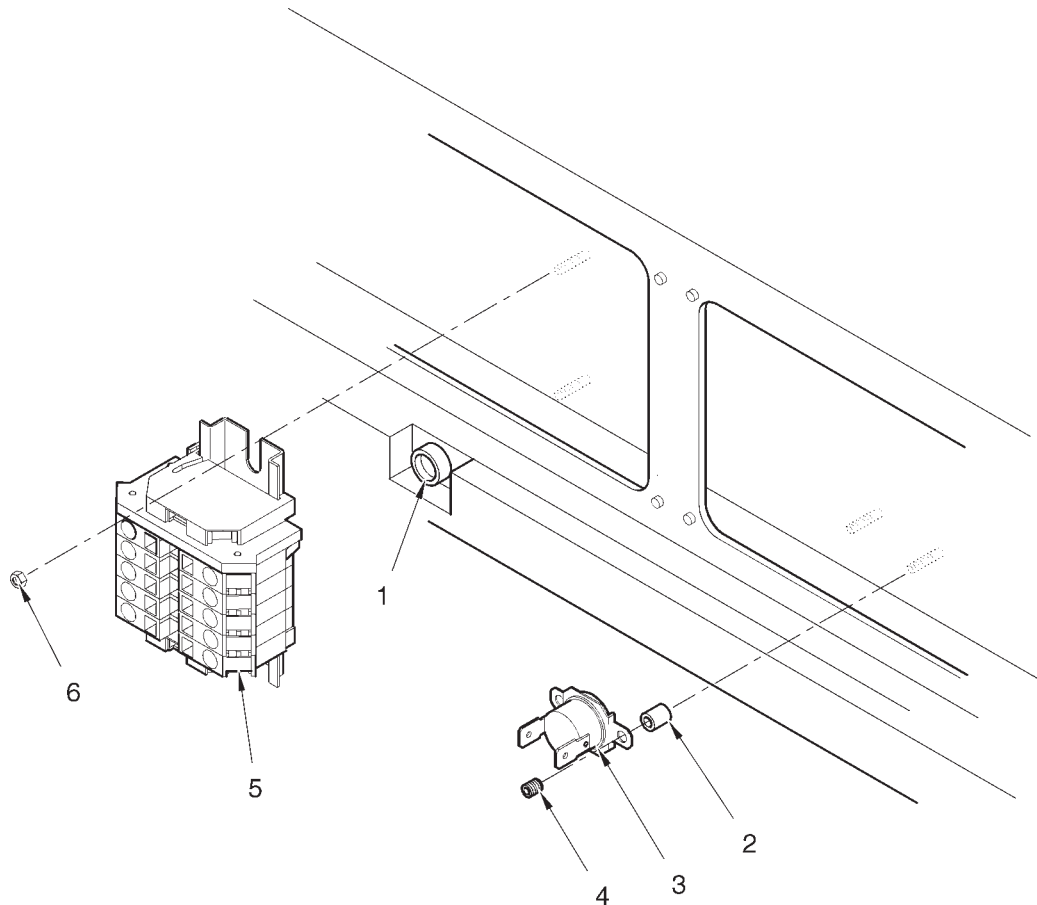
Commonly replaced items are stocked by your distributor and will be sent out when your order is received. Other parts will be ordered, by your distributor, from Henny Penny Corporation. Normally, these will be sent to your distributor within three working days.

### **3-6. WARRANTY**

All replacement parts (except lamps and fuses) are warranted for 90 days against manufacturing defects and workmanship. If damage occurs during shipping, notify the carrier at once so that a claim may be properly filed. Refer to warranty in the front of this manual for other rights and limitations.

### **3-7. RECOMMENDED SPARE PARTS FOR DISTRIBUTORS**

Recommended replacement parts, stocked by your distributor, are indicated with ✓ in the parts lists. Please use care when ordering recommended parts, because all voltages and variations are marked. Distributors should order parts based upon common voltages and equipment sold in their territory.



**Figure 3-1. Terminal Block**

<b>FIG. &amp; ITEM NO.</b>	<b>PART NO.</b>	<b>DESCRIPTION</b>	<b>HMI-103</b>	<b>HMI-105</b>
1	MS01-382	NYLON RECEPTACLE	2	2
2	ME50-013	SPACER	4	4
✓ 3	48122	HIGH LIMIT	2	2
4	ME50-023	STANDOFF	4	4
5	34924	TERMINAL BLOCK ASSY. ( 3 PHASE )	1	1
5	34925	TERMINAL BLOCK ASSY. ( 1 PHASE )	1	1
6	NS02-006	NUT	2	2

✓ recommended parts

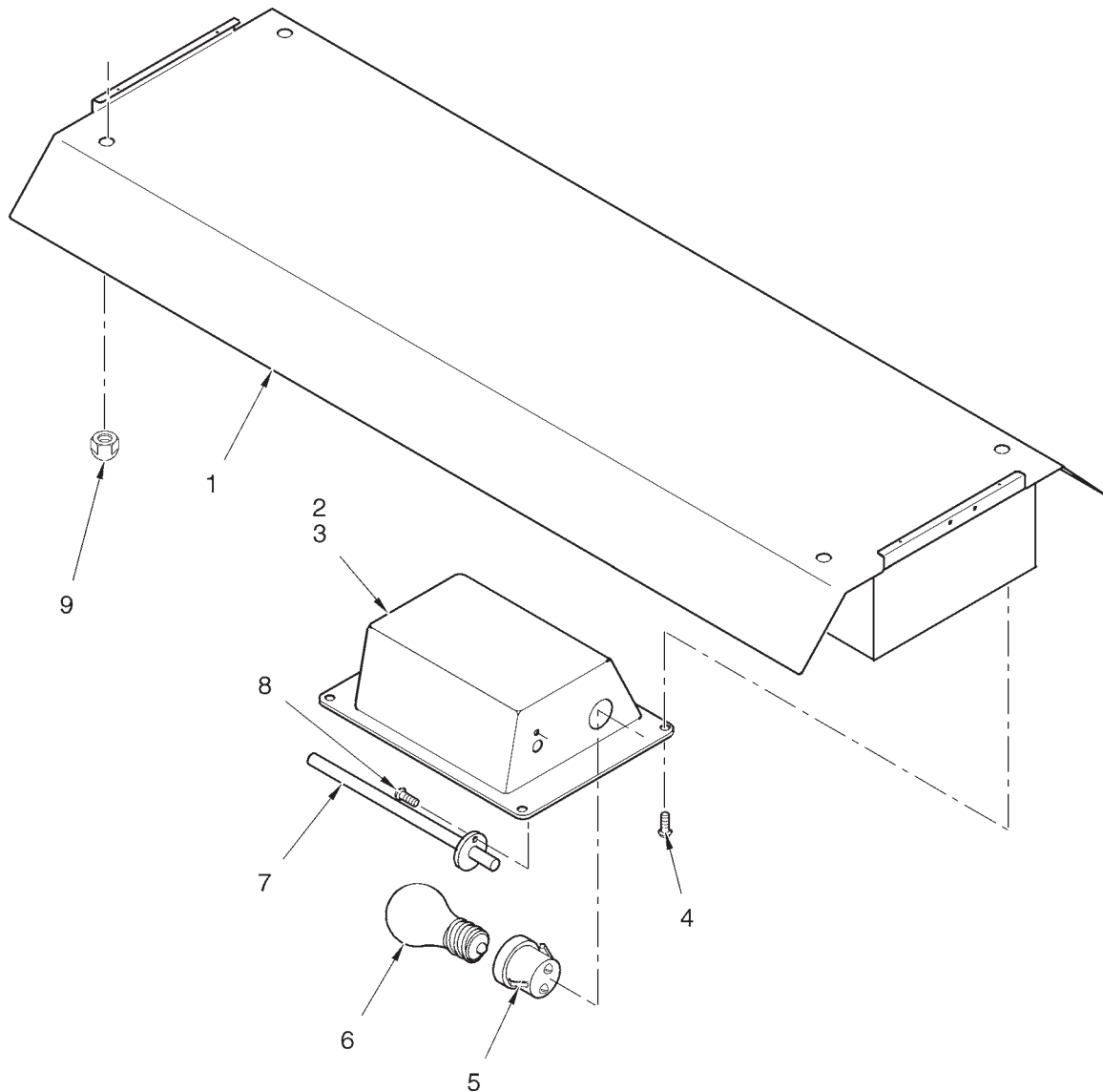
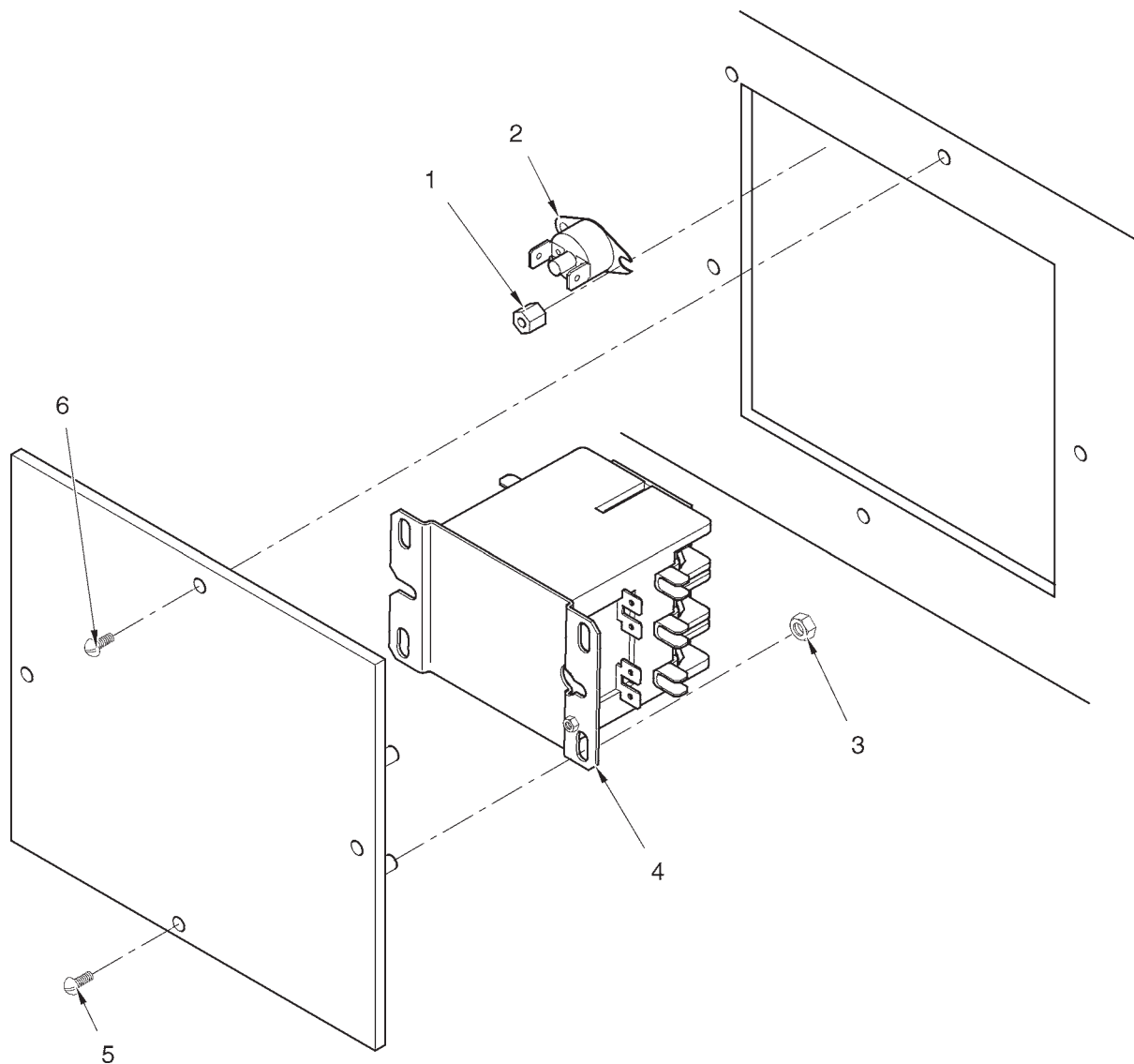


Figure 3-2. Upper Heat

FIG. & ITEM NO.	PART NO.	DESCRIPTION	HMI-103	HMI-105
1	45683	CANOPY SHIELD	-	1
1	45761	CANOPY SHIELD	1	-
2	46007	LIGHT REFLECTOR	6	10
3	46009	HEAT REFLECTOR	6	10
4	SC04-003	SCREW	4	4
✓ 5	39795	LAMP HOLDER	12	20
✓ 6	BL01-006	BULB - 67W - TEFLON COATED - 120V	12	20
✓ 6	BL01-013	BULB - 67W - TEFLON COATED - 240V	12	20
✓ 7	48650	HEATER-UPPER-RADIANT-104V-180W (208)	6	10
✓ 7	48651	HEATER-UPPER-RADIANT-115V-180W (240)	6	10
✓ 7	56618	HEATER-UPPER-RADIANT-120V-115W (120)	6	10
8	SC04-003	SCREW	6	10
9	NS03-016	ACORN NUT	4	4

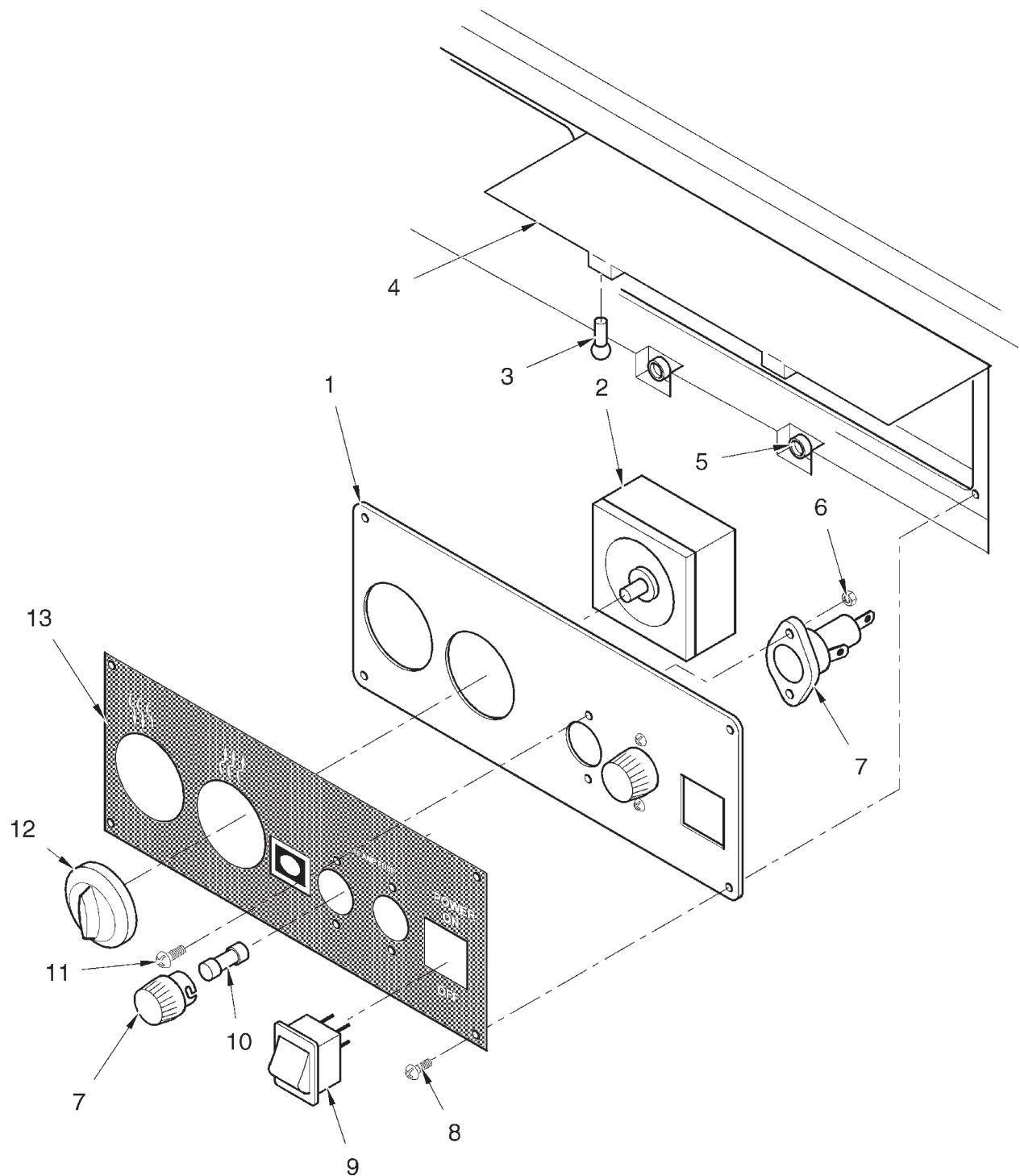
✓ recommended parts



**Figure 3-3. Contactor**

<b>FIG. &amp; ITEM NO.</b>	<b>PART NO.</b>	<b>DESCRIPTION</b>	<b>HMI-103</b>	<b>HMI-105</b>
1	ME50-023	STANDOFF	4	4
✓ 2	49547	HI LIMIT - MANUAL RESET	2	2
3	NS02-006	NUT	4	4
✓ 4	19405	CONTACTOR - 208/240 V	1	1
✓ 4	56616	CONTACTOR - 120 V	1	1
5	SC04-003	SCREW	3	3
6	SC01-205	SCREW	1	1

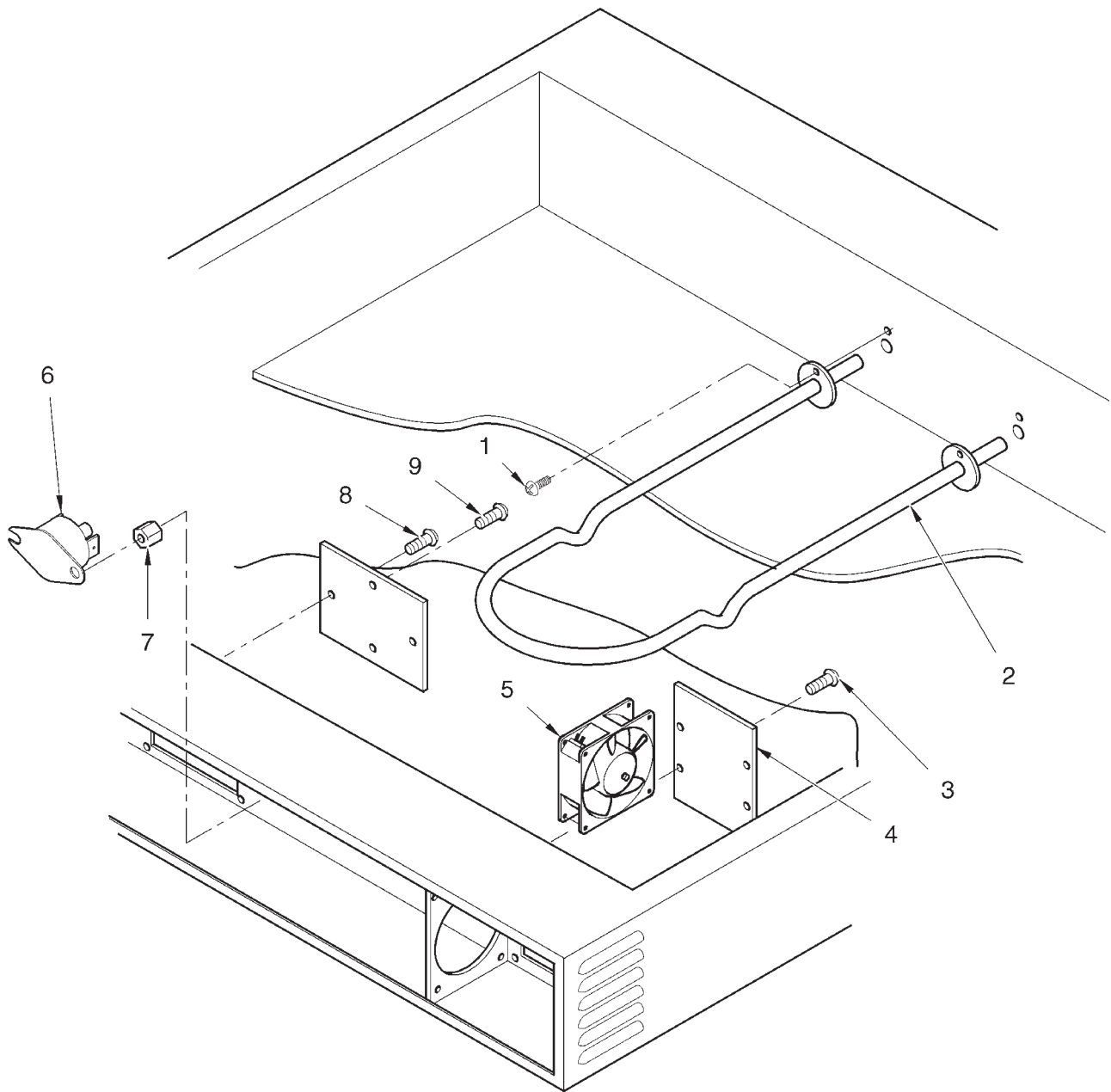
✓ recommended parts



**Figure 3-4. Control Panel Assy.**

<b>FIG. &amp; ITEM NO.</b>	<b>PART NO.</b>	<b>DESCRIPTION</b>	<b>HMI-103</b>	<b>HMI-105</b>
3-4		CONTROL PANEL ASSY.		
1	45710	CONTROL PANEL	1	1
✓ 2	22317	INFINITE REGULATOR	2	2
3	MS01-381	BLACK NYLON CLIP	2	2
4	45717	CONTROL ACCESS PANEL	1	1
5	MS01-382	BLACK NYLON RECEIVER	2	2
6	NS02-005	NUT	4	4
✓ 7	EF02-006	FUSE HOLDER	2	2
8	SC04-003	SCREW	4	4
✓ 9	43768	POWER SWITCH	1	1
✓ 10	EF02-007	FUSE	2	2
11	SC01-113	SCREW	4	4
12	22046	INFINITE SWITCH KNOB	2	2
13	45835	DECAL - HMI-103	1	-
13	45809	DECAL - HMI-105	-	1
13	48547	DECAL - HMI-103 C.E.	1	-
13	48521	DECAL - HMI-105 C.E.	-	1

✓ recommended parts

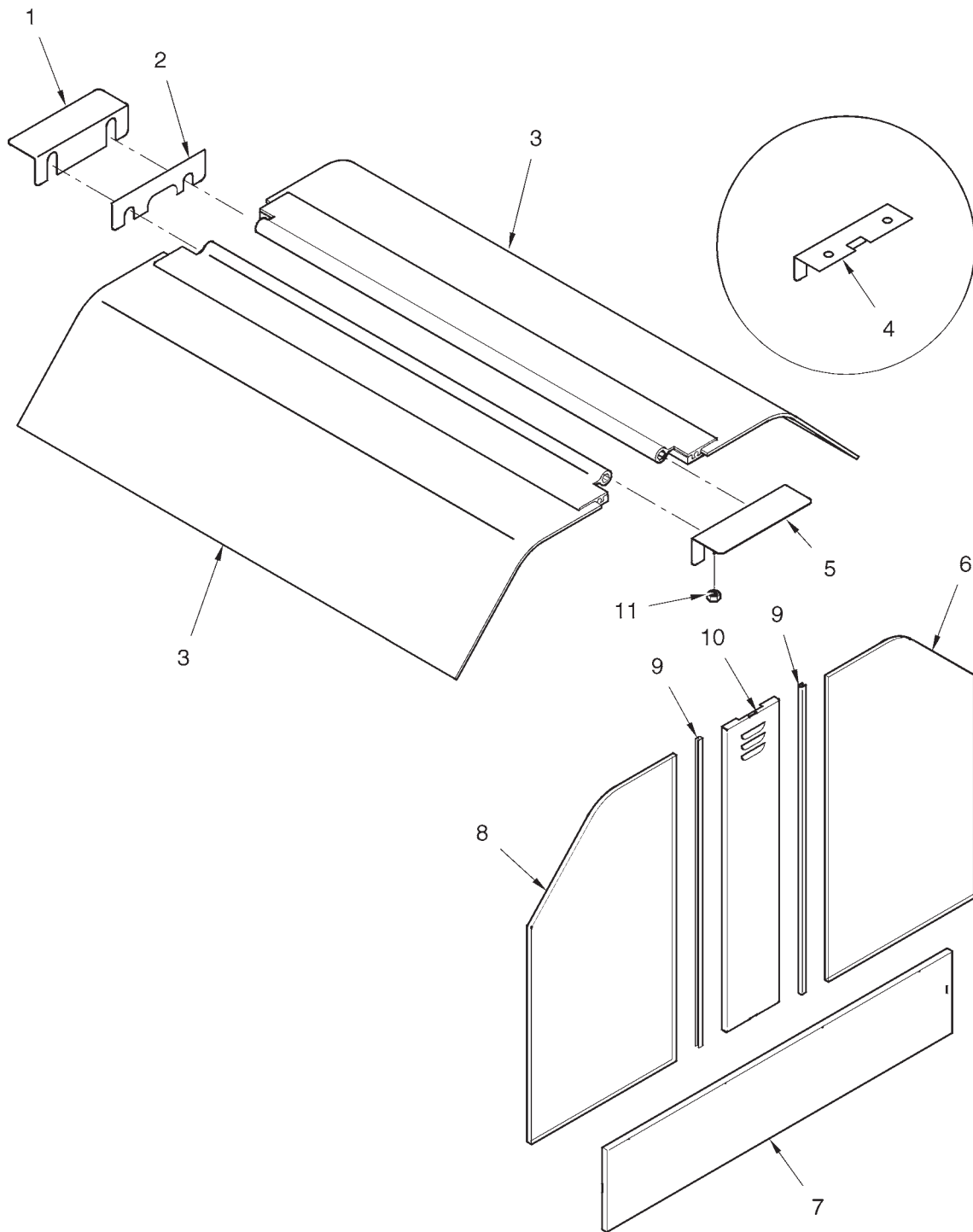


**Figure 3-5. Lower Heat**

<b>FIG. &amp; ITEM NO.</b>	<b>PART NO.</b>	<b>DESCRIPTION</b>	<b>HMI-103</b>	<b>HMI-105</b>
3-5		LOWER HEAT		
1	SC02-041	SCREW	4	6
√ 2	56617	HEATER - LOWER - 120V	2	2
√ 2	44976	HEATER - LOWER - 208V	2	3
√ 2	37059	HEATER - LOWER - 240V	2	3
√ 2	54025	HEATER - LOWER - CE	2	3
3	SC04-003	SCREW (FAN BOX COVER)	8	8
4	49537	FAN ACCESS PANEL	2	2
√ 5	37398	COOLING FAN - 220/230V	2	2
√ 5	56615	COOLING FAN - 110-120V	2	2
√ 6	49547	HIGH LIMIT - MANUAL RESET	2	2
7	ME50-023	STANDOFF	4	4
8	SC04-003	SCREW (COVER PLATE)	3	3
9	SC01-205	SCREW	1	1

√ recommended parts





**Figure 3-6. Glass Panels**

FIG. & ITEM NO.	PART NO.	DESCRIPTION	HMI-103	HMI-105
3-6		GLASS PANELS		
1	48626	HINGE BLOCK COVER STUD ASSEMBLY	1	1
2	45745	HINGE BLOCK	2	2
3	54029	CANOPY GLASS ASSY.	2	-
3	54039	CANOPY GLASS ASSY.	-	2
4	49567	UPRIGHT COVER TOP, CORD	1	1
5	48626	HINGE BLOCK COVER STUD ASSEMBLY	1	1
6	45677	END GLASS-CLEAR RT.	2	2
6	48508	END GLASS-MIRROR RT.	2	2
7	45699	BOTTOM ACCESS PANEL	2	2
8	48568	END GLASS-CLEAR LT.	2	2
8	48507	END GLASS-MIRROR LT.	2	2
9	48522	END GLASS SEAL	4	4
10	45697	UPRIGHT ACCESS PANEL	2	2
11	NS02-006	NUT	4	4
12*	49593	POWER CORD ASSY. 30A-1PH TOPEXIT	1	1
12*	37123	POWER CORD ASSY. 20A-1PH-120V	1	1
12*	49594	POWER CORD ASSY. 20A-3PH BOT. EXIT	1	1
12*	49596	POWER CORD ASSY. 20A-3PH TOPEXIT	1	1
13*	05907	PEDESTAL BASE MOUNTING KIT	-	1
13*	05906	PEDESTAL BASE MOUNTING KIT	1	-
14*	53185	BREAD SHELF ASSEMBLY - SAFEWAY	1	1
15*	48561	INSULATION, BOTTOM	1	—
15*	48523	INSULATION, BOTTOM	—	1
16*	48564	INSULATION, CUSTOMER SIDE	1	—
16*	48524	INSULATION, CUSTOMER SIDE	—	1
17*	48565	INSULATION, CONTROL SIDE	1	—
17*	48525	INSULATION, CONTROL SIDE	—	1

\*not shown