

SECTION 3. PARTS INFORMATION

3-1. INTRODUCTION

This section identifies and lists the replaceable parts of the Henny Penny SCD Rotisserie Merchandiser.

3-2. GENUINE PARTS

Use only genuine Henny Penny parts in your cabinet. Using a part of lesser quality or substitute design may result in cabinet damage or personal injury.

3-3. HOW TO ORDER

Once the part you want to order has been found in the Parts List, write down the following information:

1. From the Parts List
(Sample)
Item Number 3
Part Number 40645
Description Relay
2. From the data plate
(Sample)
Product Number SCD6.0
Serial Number AE001IH
Voltage 208V

3-4. PRICES

Your distributor has a price parts list and will be glad to inform you of the cost of your parts order.

3-5. DELIVERY

Commonly replaced items are stocked by your distributor and will be sent out when your order is received. Other parts will be ordered by your distributor from Henny Penny Corporation. Normally, these will be sent to your distributor within three working days.

3-6. WARRANTY

All replacement parts (except lamps and fuses) are covered under warranty for 90 days against manufacturing defects and workmanship. If damage occurs during shipping, notify the carrier at once so that a claim may be properly filed. Refer to warranty on the front of this section for other rights and limitations.

3-7. RECOMMENDED SPARE PARTS FOR DISTRIBUTORS

Recommended replacement parts, stocked by your distributor, are indicated with ✓ in the parts lists. Please use care when ordering recommended parts, because all voltages and variations are marked. Distributors should order parts based upon common voltages and equipment sold in their territory.

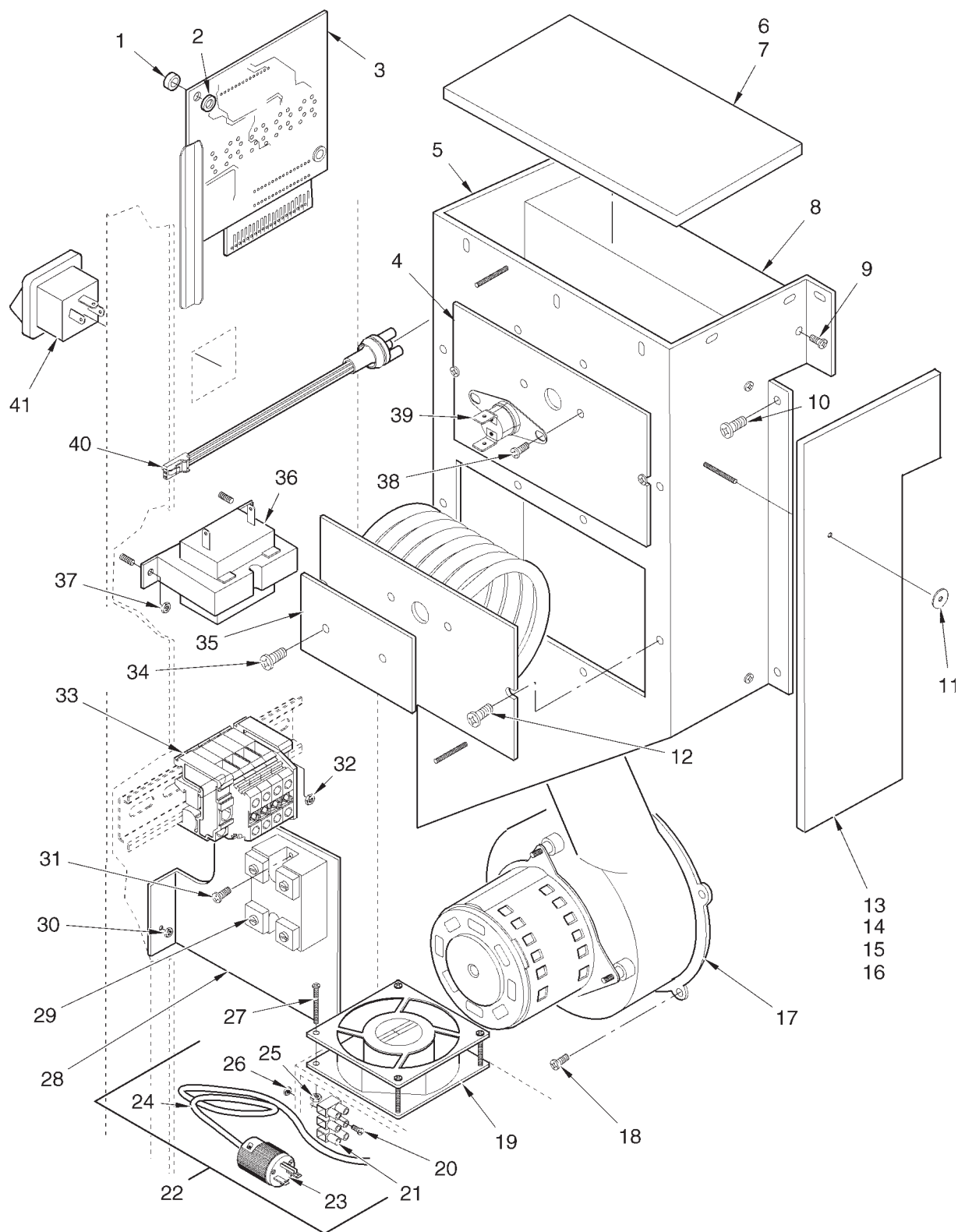


Figure 3-1. Electrical Controls

FIG. & ITEM NO.	PART NO.	DESCRIPTION	SCD-8	SCD-6
3-1		ELECTRICAL CONTROLS		
1	ME50-014	SPACER	4	4
2	NS02-005	NUT	4	4
√ 3	51101RB	CONTROL BOARD ASSEMBLY	1	1
√ 4	49214	HEATER - 208V-1000W (UNDER INSUL.)	2	2
√ 4	49215	HEATER - 240V-1000W (UNDER INSUL.)	2	2
5	50614	HEATER BOX	1	1
6	49900	INSULATION - HEATER BOX CAP	1	1
7	49899	INSULATION - HEATER BOX TOP	2	2
8	49211	BAFFLE - BLOWER	1	1
9	SC02-016	SCREW	9	9
10	SC02-016	SCREW	7	7
11	WA02-001	WASHER	7	7
12	SC02-016	SCREW	6	6
13	49903	INSULATION - HEATER BOX, RH	1	1
14	49902	INSULATION - HEATER BOX, LH	1	1
15	49901	INSULATION - HEATER BOX, BOTTOM	1	1
16	49898	INSULATION - HEATER BOX, FRONT	1	1
√ 17	39308	BLOWER - HIGH TEMP.	1	1
18	SC01-124	SCREW (#8-32 X 3/4 PH THD SS)	4	4
19	37398	COOLING FAN	1	1
20	SC01-058	SCREW	2	2
21	ME50-021	TERMINAL BLOCK	1	1
22	49957	POWER CORD ASSEMBLY	1	1
23	36810	. PLUG-15 AMP-250V	1	1
24	49956	. POWER CORD		
25	NS02-005	NUT	4	4
26	NS02-005	NUT	2	2
27	SC01-037	SCREW	4	4
28	49949	BRACKET, RELAY	1	1
√ 29	40645	RELAY	1	1
30	NS02-005	NUT	2	2
31	SC02-041	SCREW	2	2
32	NS02-005	NUT	1	1
33	52994	TERMINAL BLOCK ASSEMBLY	1	1
34	SC02-016	SCREW	2	2
35	43719	HOLE COVER	1	1
√ 36	28979	TRANSFORMER-PRI. 208/240V-SEC. 12V	1	1
37	NS02-005	NUT	2	2
38	SC02-016	SCREW	2	2
√ 39	18201	HIGH LIMIT	1	1
√ 40	52100	TEMPERATURE SENSOR ASSY (UNDER INSUL.)	1	1
√ 41	43768	POWER SWITCH - 125-250V	1	1

√ recommended parts

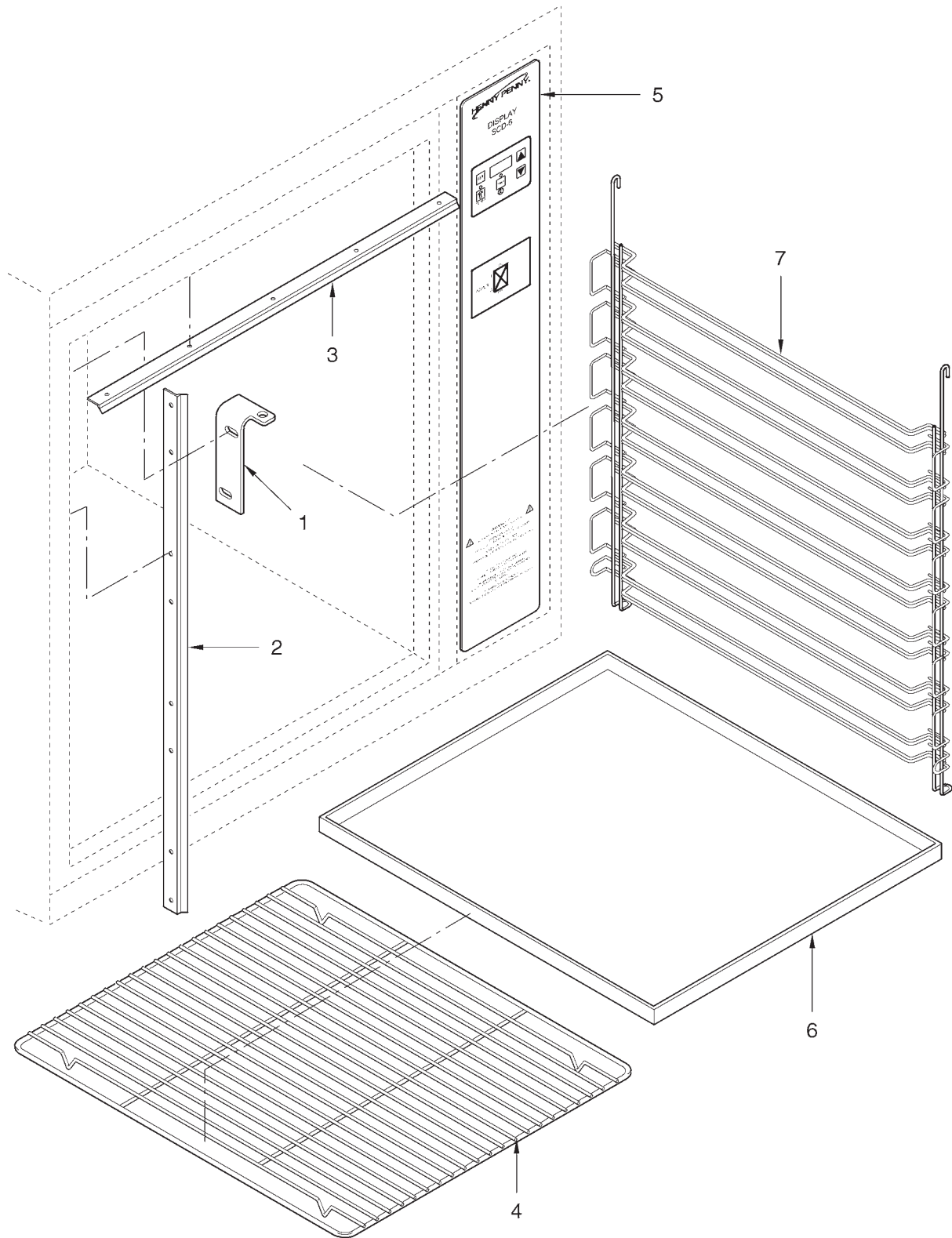


Figure 3-2. Drip Pan and Racks

FIG. & ITEM NO.	PART NO.	DESCRIPTION	SCD-8	SCD-6
3-2		DRIP PAN AND RACKS		
1	48549	HINGE - CONTROL SIDE	1	1
1	48567	HINGE - CUSTOMER SIDE	1	1
√ 2	49863	DOOR GASKET - SIDE - SCD-8	2	-
√ 2	49861	DOOR GASKET - SIDE - SCD-6	-	2
√ 3	49862	DOOR GASKET - TOP - SCD-8	2	-
√ 3	49860	DOOR GASKET - TOP - SCD-6	-	2
4	40882	SHELF - SCD-8	6	-
4	40871	SHELF - SCD-6	-	6
5	49842	DECAL - CONTROL PANEL - SCD-8	1	-
5	49841	DECAL - CONTROL PANEL - SCD-6	-	1
5	61473	DECAL - CONTROL PANEL - SCD-8 - POLLO	1	-
6	40925	DRIP PAN - SCD-8	1	-
6	40923	DRIP PAN - SCD-6	-	1
7	49175	SIDE RACK - SCD-8	2	-
7	49174	SIDE RACK - SCD-6	-	2

√ recommended parts

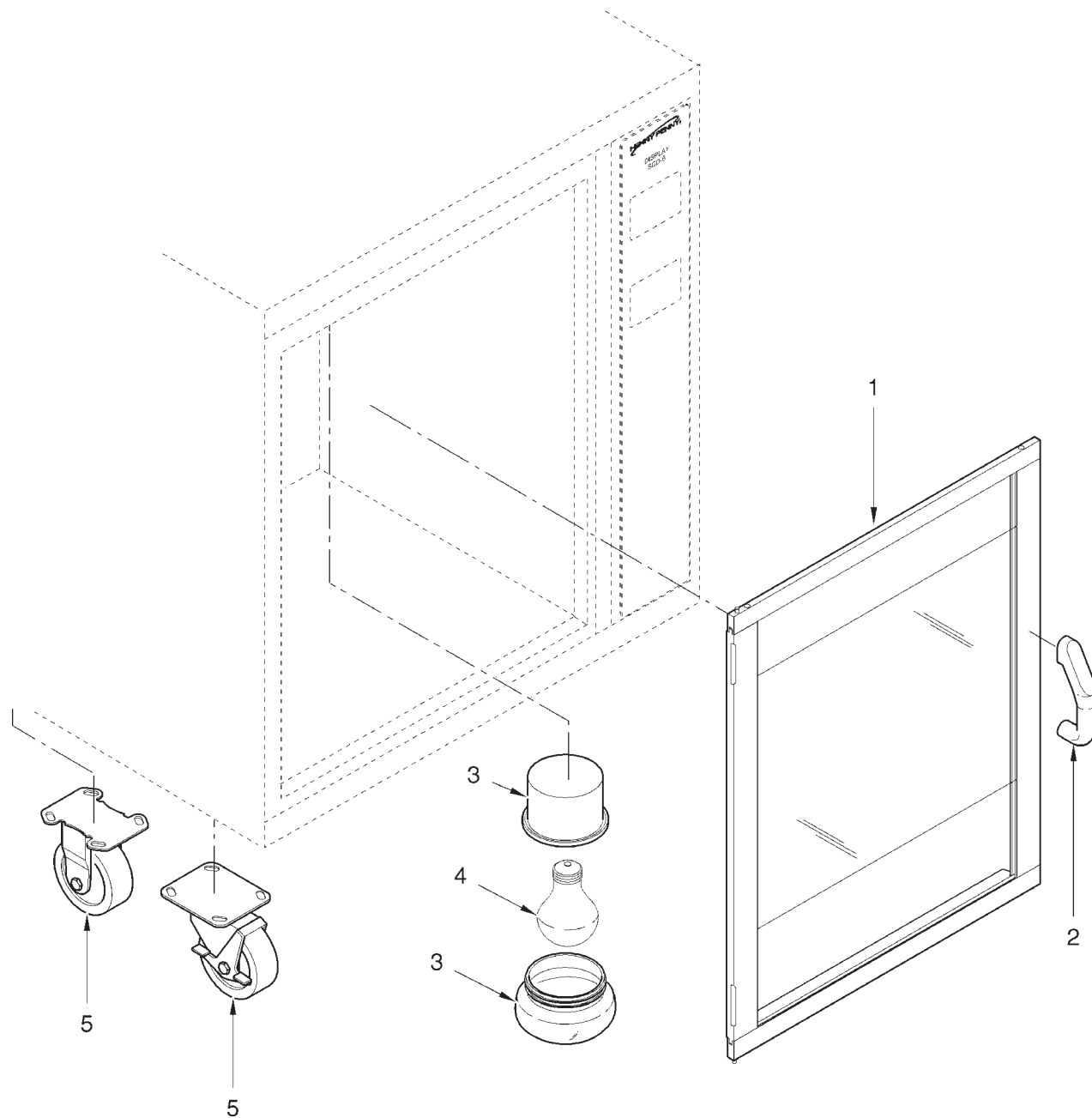


Figure 3-3. Door, Light, and Casters

FIG. & ITEM NO.	PART NO.	DESCRIPTION	SCD-8	SCD-6
3-3		DOOR, LIGHT, AND CASTERS		
1	49751	DOOR ASSY. - CONTROL - W/HANDLE	1	-
1	49752	DOOR ASSY. - CONTROL - MIR. - W/HANDLE	1	-
1	49753	DOOR ASSY. - CUST. - W/O HANDLE	1	-
1	49754	DOOR ASSY. - CUST. - W/HANDLE	1	-
1	49755	DOOR ASSY. - CUST. - MIR. - W/O HANDLE	1	-
1	49756	DOOR ASSY. - CUST. - MIR. - W/HANDLE	1	-
1	49261	DOOR ASSY. - CONTROL - W/HANDLE	-	1
1	49262	DOOR ASSY. - CONTROL - MIR. - W/HANDLE	-	1
1	49263	DOOR ASSY. - CUST. - W/O HANDLE	-	1
1	49264	DOOR ASSY. - CUST. - W/HANDLE	-	1
1	49265	DOOR ASSY. - CUST. - MIR. - W/O HANDLE	-	1
1	49266	DOOR ASSY. - CUST. - MIR. - W/HANDLE	-	1
2	44757	DOOR HANDLE	1 OR 2	1 OR 2
3	51854	LIGHT FIXTURE	4	4
✓ 4	BL01-014	LIGHT BULB - 40 WATT	4	4
5	40948	CASTER 4 IN. - RIGID (REAR)	2	2
5	40947	CASTER 4 IN. - SWIVEL (FRONT)	2	2
6	41356*	LEG ASSEMBLY (OPTIONAL)	4	4

✓ recommended parts

* not shown