

SECTION 6. PARTS INFORMATION

6-1. INTRODUCTION

This section identifies and lists the replaceable parts of the Henny Penny Model HC-900 Heated Holding Cabinet.

6-2. GENUINE PARTS

Use only genuine Henny Penny parts in your cabinet. Using a part of lesser quality or substitute design may result in cabinet damage or personal injury.

6-3. HOW TO FIND PARTS

To find items you want to order from the Parts List, proceed as follows:

1. Refer to the photographs in the front of the Operation Section and the exploded drawings in this section to identify the part needed.
2. Use the item number from the exploded drawing to locate the corresponding part in the Parts List in this section. In this list will be the Henny Penny part number and a description of the part.

6-4. HOW TO ORDER

Once the parts you want to order have been found in the Parts List, write down the following information:

1. From the photograph and Parts List (SAMPLE)

Item Number 44
Part Number 22198
Description Power Switch

2. From the data plate (SAMPLE)

Product Number 05148
Serial Number 00179
Voltage 120

Henny Penny CORPORATION LAYTON, OHIO 45320		Heated Holding Cabinet HC-900	
LISTED	UL	NSF	381
Model	HC-900	Serial No.	00179
Product No.	05148		
120	Volts	60	Hz.
		1	Phase
	Amps.		Watts
			Wire
Warranty Expires Last Day of			

3. The following table has been provided as a sample format for you to use in preparing your spare parts orders. By providing all the entries, your distributor will be able to insure the correct parts will be sent to you. Also, by prepayment your order will be expedited.

6-4. HOW TO ORDER

FROM PARTS LIST			YOUR ORDER		
Item Number	Part Number	Description	Quantity Ordered	Price Each	Total
46	25183	Thermometer			

Product No. 05148 Serial No. 00179 Voltage 120

6-5. PRICES

Your distributor has a priced parts list and will be glad to inform you of the cost of your parts order.

6-6. DELIVERY

Commonly replaced items are stocked by your distributor and will be sent out when your order is received. Other parts will be ordered by your distributor from Henny Penny Corporation. Normally, these will be sent to your distributor within three working days.

6-7. WARRANTY

All replacement parts (except lamps and fuses) are warranted for 90 days against manufacturing defects and workmanship. If damage occurs during shipping, notify the sender and the carrier at once so that a claim may be properly filed. Refer to warranty in the front of this section for other rights and limitations.

6-8. RECOMMENDED SPARE PARTS FOR DISTRIBUTORS

Recommended replacement parts, stocked by your distributor, are indicated with ✓ in the parts lists. Please use care when ordering recommended parts, because all voltages and variations are marked. Distributors should order parts based upon common voltages and equipment sold in their territory.

HC-900 CONTROL MODULE (with Adjustable Humidity)

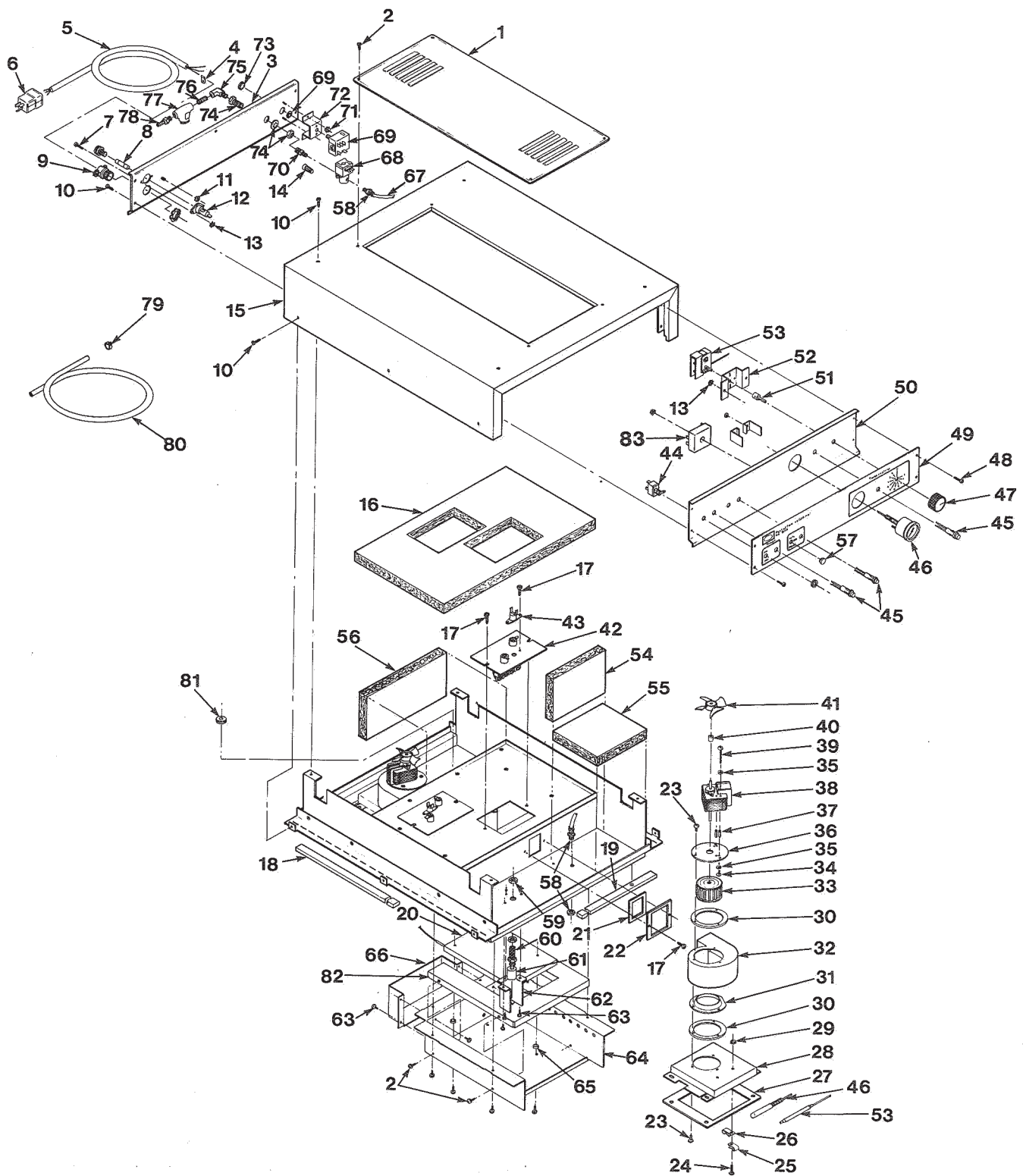
No.	Part No.	Description	Qty.
1	25704	Panel - Access	1
2	SC01-053	Screw #8-32 x 1/2 PH RHD	4
3	28719	Panel - Rear S/A	1
4	EC04-002	Terminal Flag #10-10-12 Ga.	1
5	MS01-212	Cable - 12/3 90C 600Y	8 ft.
6	25765	Plug 125V 20 Amp	1
7	SC01-010	Screw #6-32 x 1/2 PH PHP	2
√ 8	EF02-007	Fuse - 15 Amp	1
9	EF02-042	Connector - Cable 3/4	1
10	SC02-023	Screw 8#-B x 3/8 PH THP	15
11	NS02-001	Nut #10-32 Hex Keps	1
√ 12	EF02-006	Fuse Holder	1
13	NS02-005	Nut #6-32 Hex Keps	2
14	EC01-010	Wire Nut 12-18 Ga.	2
15	25602	Top	1
16	25628	Insulation - Cover	1
17	SC02-016	Screw #8 A B x 1/2 PH PHD	18
18	25620	Seal	2
19	25624	Seal	2
√ 20	28723	Heater 240V, 1750W (120V, 440W)	1
21	25619	Gasket - Blower Outlet	2
22	25618	Gasket Retainer	2
23	SC02-012	Screw #10 - ABX 3/8 PH PHD	12
24	SC01-055	Screw #10-32 x 3/4 Hex HD	2
25	EF02-031	Clamp 1/4 ID x 3/8 W	2
26	EF02-033	Clamp 7/16 x 3/8 W	2
27	25627	Gasket	2
28	28707	Box - Blower	2
28	25616	Rear Box - Blower	2
29	NS02-001	Nut #10 x 32 Hex Keps	2
30	25698	Gasket - Blower Plate	4
31	25622	Inlet - Flange	2
32	25623	Housing - Blower	2
33	25621	Wheel - Blower	2
34	SC01-090	Screw #6-32 x 5/16 SL RH	8
35	LW02-010	Lockwasher - Internal #65	8
36	25632	Plate - Blower	2
37	25767	Spacer - Motor	8
√ 38	25751	Motor - Blower 120V	1
39	SC01-091	Screw #6-32 x 1 3/4 SL	8
40	25768	Spacer - Cooling Fan	2
√ 41	25706	Fan - Cooling 3 1/2"	2
√ 42	25738	Heater 120V/750W	2
√ 43	18201	Hi Limit Thermostat	2
√ 44	22198	Power Switch	1

√ recommended parts

HC-900 CONTROL MODULE (with Adjustable Humidity)

No.	Part No.	Description	Qty.
✓ 45	16624	Indicator Light	2
✓ 46	25183	Thermometer	1
47	25863	Knob - Thermostat-Optional	1
48	SC02-030	Screw #8- B x 3/8 PH	4
49	25986	Label - Control Panel with Power + Warm	1
49	61469	Label - Control Panel - Wendy's	1
50	27006	Panel - Control S/A	1
51	25263	Extension - Thermostat Shaft - Optional	1
52	25241	Bracket - Thermostat Mount	1
✓ 53	14209	Thermostat	1
54	25734	Insulation 5 x 7 x 1	2
55	25733	Insulation 6 x 6 _ x 1	4
56	25735	Insulation 5 x 10 _ x 1	2
57	PL01-001	Plug Button _	1
58	FP05-002	Union Bulkhead	1
59	NS01-017	Nut	1
60	28722	Fitting - Bulkhead	1
✓ 61	28856	Float Switch	1
62	28687	Guard - Float	1
63	SC02-014	Screw #8-AB x 3/8 PH THD S.	*
64	28703	Cradle	1
65	25644	Spacer	4
66	28689	Cover - Heater	1
67	MS01-129	Tubing 1/4 OD .030 WALL	2 ft.
✓ 68	25147	Valve Solenoid	1
✓ 69	22045	Infinite Switch	1
70	FP01-012	Nipple - Reducing	1
71	NS02-005	Nut Hex Keps #6-32	2
72	28697	Bracket - Infinite Switch	1
73	PL01-015	Plug Button - 13/16	1
74	FP01-013	Bulkhead Adapter	1
75	FP05-007	Elbow (1/4 pipe to 1-4 pipe)	1
76	FP02-009	Nipple - Close (1/4)	1
✓ 77	25208	Water Strainer	1
78	FP01-053	Fitting 3/8 ID Tubing 1/4 NPT	1
79	MS01-263	Clamp	1
80	28731	Hose	8 ft.
81	EF02-043	Grommet	1
82	28699	Bottom - False	1
✓ 83	25994	Timer - Delay	1

✓ recommended parts



HC-900 CABINET ASSEMBLY (with Adjustable Humidity)

No.	Part No.	Description	Qty.
1	28726	Control Module - 120 V - 1940 W	1
2	SC01-092	Screw #10-32 x 3 SL RHD	4
3	27049	Door Assembly (Optional 4 Door)	2
4	25702	Hinge Assembly	4
5	LW02-013	Lockwasher External #10	16
6	SC01-086	Screw #12-32 x 3/4 PH TH	8
7	SC01-074	Screw #10-32 x 1/2 PH TH	8
8	LW 01-002	Lockwasher Split 1/4"	8
9	SC01-039	Screw #1/4-20 x 1 Hex Head	8
10	27155	Caster 5"	4
11	27154	Caster 5" W/Brake	4
12	25715	Decorator Cover	2
13	SC01-075	Screw #10-32 x 3/4 PHT TH	12
14	25695	Washer	12
15	25644	Spacer	12
16	25687	Retainer	4
17	SC02-016	Screw #8-AB x 1/2 PH PHD	12
18	25689	Retainer	4
19	28710	Cabinet Assembly - Less Module	1
20	NS01-008	Nut #8-32 Hex S	5
21	LW02-006	Lockwasher - Internal #8 S	5
22	SC01-053	Screw #8-32 x 1/2 PH RHD	5
√ 23	25643	Door Gasket	2
24	28714	Water Box Weld Assembly	1
25	SC01-038	Screw #10-24 x 3/8 PH THD S	2
26	LW02-005	Lockwasher #10 Internal	2
27	25712	Cock Drain	1
28	28711	Handle Protector	1
29	28712	Handle - Plastic	1
30	28729	Air Duct Assembly - Upper	2
31	28728	Air Duct Assembly - Lower	2
32	NS03-024	Nut #8-32 B PL Acorn	*
33	LW02-006	Lockwasher Internal #8 S	*
34	25696	Hanger	8
35	SC01-076	Screw #8-32 x 1/4 PH THD S	*
36	25937	Latch Assembly	
37	SC01-099	Screw	
38	28691	Slide - Tray	8
39	25984	Leg Assembly - Optional (not shown)	4

√ recommended parts

