

SECTION 2. INSTALLATION

2-1. INTRODUCTION

This section provides the installation instructions for the Henny Penny heated express cabinet.

NOTICE

Installation of this unit should be performed only by a qualified service technician.



Do not puncture the skin of the unit with drills or screws as component damage or electrical shock could result.

2-2. UNPACKING

The Henny Penny heated express cabinet has been tested, inspected, and expertly packed to insure arrival at its destination in the best possible condition. The unit has been bolted to wooden skid. All items have been packed and taped inside of the unit. The unit is then packed inside a triple wall corrugated carton with sufficient padding to withstand normal shipping treatment.

NOTICE

Any shipping damages should be noted in the presence of the delivery agent and signed prior to his or her departure.

To remove the Henny Penny cabinet from the carton, you should:

1. Carefully cut banding straps.
2. Open flaps of carton and remove packing.
3. Lift carton from unit.
4. Remove four bolts mounting the merchandiser to the skid.
5. Install optional legs on units if available.

CAUTION

To avoid breaking side glass or damaging unit, lay unit on its back, not on its side, when installing legs. Install legs before installing the shelves.

2-2. UNPACKING (Continued)

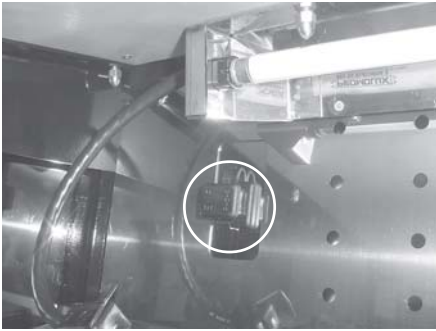


Figure 2-1

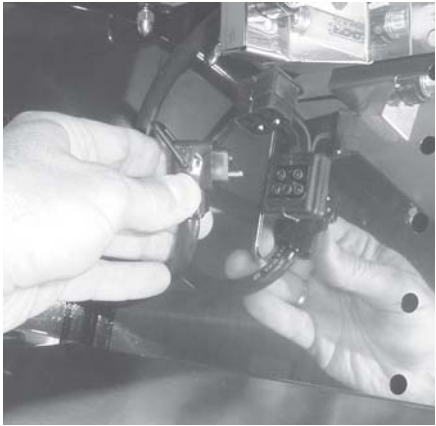


Figure 2-2

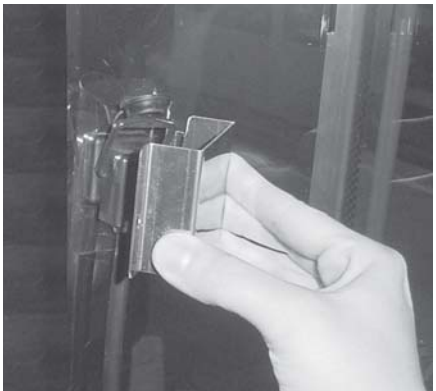


Figure 2-3

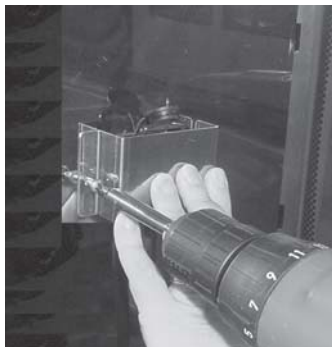


Figure 2-4

- 6A. Unpack and install shelves.
 - a. Hook the shelf brackets in the slots in the back, interior of unit. See next pages (Figure 2-5 & 2-6) for proper slot arrangement for either 2, 3 or 4 shelf units.
 - b. Pull the cover off the receptacles on each side of the shelves. Figure 2-1.
 - c. Line up the prongs on the plug with the holes in the receptacle, and firmly push the plugs into the receptacles. Figure 2-2.

NOTICE

The plugs must fit firmly into the receptacles for the lights and shelf heaters to operate.

- 6B. **CE UNITS**-Unpack and install shelves.
 - a. Hook the shelf brackets in the slots in the back, interior of unit. See next pages (Figure 2-5 & 2-6) for proper slot arrangement for either 2, 3 or 4 shelf units.
 - b. Using a Phillip's head screwdriver, remove the screw securing the shelf plug cover and remove the cover. Figure 2-3.
 - c. Pull the cover off the receptacles on each side of the shelves. Figure 2-1.
 - d. Line up the prongs on the plug with the holes in the receptacle, and firmly push the plugs into the receptacles. Figure 2-2.
 - e. Insert the tab on the shelf plug cover into the slot on the back panel and secure the cover in place using the screw previously removed. Figure 2-4.

7. Install fluorescent lamps. See Installing or Replacing Fluorescent Lamps Section.
8. Remove the bottom inserts and pull cardboard packing from around elements in bottom of unit.



To avoid fire, remove the 3 corrugated shipping supports located beneath these inserts, all visible packing material, tape, and the unpacking instructions, prior to operation.

9. Peel off any protective covering from the exterior of the cabinet.



Take care when moving the cabinet to prevent personal injury.

10. Once the shelves and shelf lamps are installed, and the packing material removed, the unit is ready for operation.

2-3. HEC 3 & 4 SHELF INSTALLATION INSTRUCTIONS

The drawing below is the slot arrangement (right and left) for the brackets of the shelves of the HEC. The lines point to the slot that the top prong of the bracket fits into.

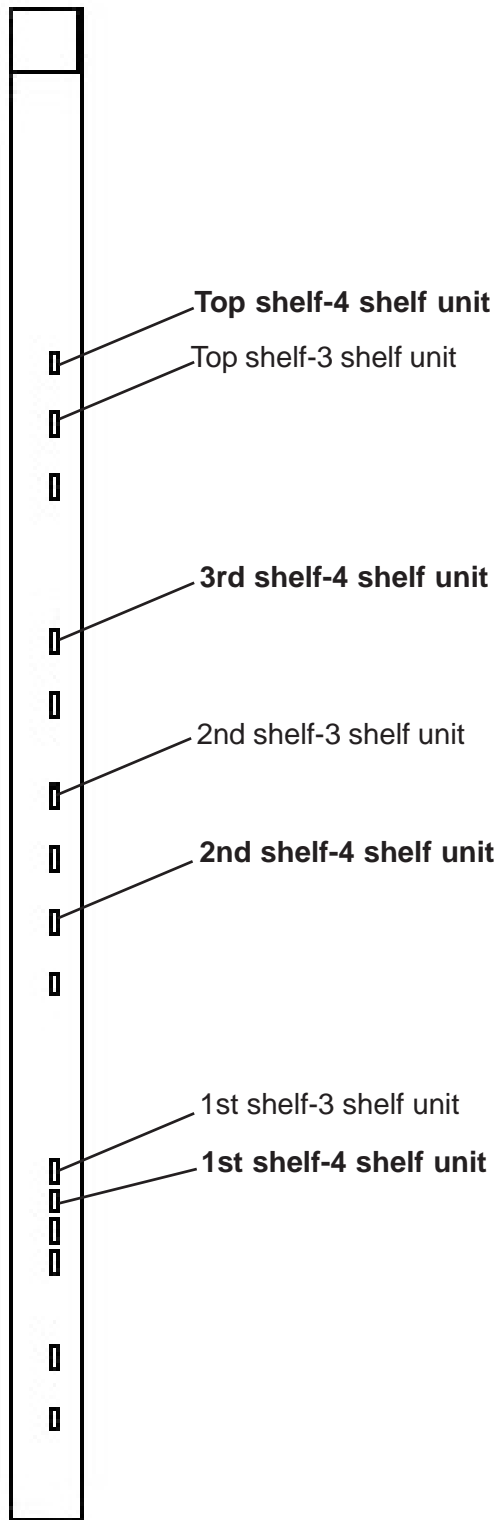


Figure 2-5

2-4. HEC 2 SHELF
INSTALLATION
INSTRUCTIONS

The drawing below is the slot arrangement (right and left) for the brackets of the shelves of the HEC. The lines point to the slot that the top prong of the bracket fits into.

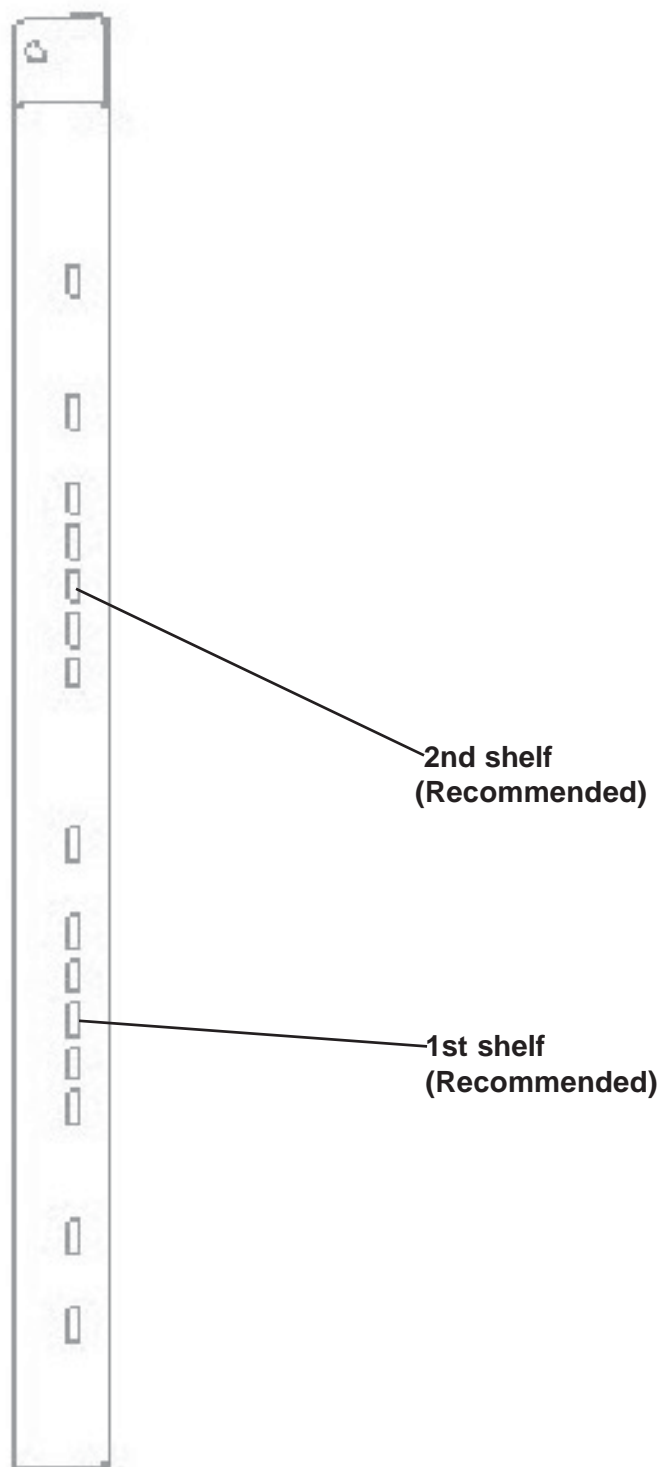


Figure 2-6

2-5. INSTALLING OR REPLACING FLUORESCENT LAMPS

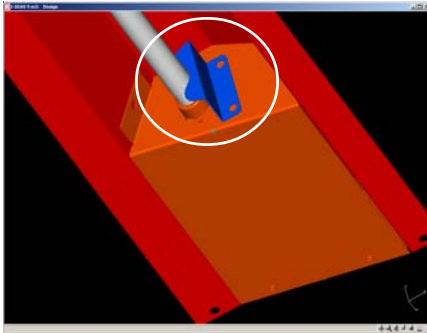


Figure 2-7

CAUTION

This lamp has been designed to resist breakage and must be replaced with Promolux part #12521C (Henny Penny part #BL01-019) in order to maintain compliance with NSF standards. Use max. 21 watt, T5 Fluorescent lamp.

1. Make sure electrical power is off to unit and allow unit to cool.



To avoid electrical shock and burns, disconnect power and allow unit to cool before changing lamp.

2. Using a Phillip's head screwdriver, remove the screws securing the lamp retainers and remove retainers. Figure 2-7.
3. If replacing a faulty lamp, carefully rotate lamp out of sockets.
4. Install new lamp by carefully rotating the lamp into the socket and snapping them into place. Repeat for each shelf.
5. Reinstall lamp retainers, restore power and unit is ready for operation.

2-6. LOCATION

The unit should be placed in an area where the unit can be loaded and unloaded easily. For proper operation, the cabinet must be level.

If the Henny Penny heated express cabinet does not have legs, level the unit and run a bead of silicone rubber (silicone or equivalent sealant must be a NSF listed material) around the perimeter of the unit, sealing it to the floor.

2-7. CABINET DIMENSIONS

	Width	Height	Depth
HEC-103	37 in. (940 mm)	71 in. (1803 mm)	31 in. (787 mm)
HEC-104	49 in. (1245 mm)	71 in. (1803 mm)	31 in. (787 mm)
		(77 in (1956 mm) w/legs)	
HEC-123	37 in. (940 mm)	56 in. (1422 mm)	31 in. (787 mm)
HEC-124	49 in. (1245 mm)	56 in. (1422 mm)	31 in. (787 mm)
		(62 in (1574 mm) w/legs)	

2-8. ELECTRICAL CONNECTION

The heated holding cabinet is available from the factory as a 208, 240, 220-240, or 380-415 VAC unit. The data plate, located on the control panel of the unit, specifies the correct electrical supply. The unit requires a grounded receptacle with a separate electrical line protected by a fuse or circuit breaker of the proper rating.



To avoid electrical shock, the cabinet must be adequately and safely grounded (earthed) according to local electrical codes, and this appliance must be equipped with an external circuit breaker which will disconnect all ungrounded (unearthed) conductors. The main power switch on this appliance does not disconnect all line conductors.

(FOR EQUIPMENT WITH CE MARK ONLY!)

To prevent electric shock hazard this appliance must be bonded to other appliances or touchable metal surfaces in close proximity to this appliance with an equipotential bonding conductor. This appliance is equipped with an equipotential lug for this purpose. The equipotential lug is marked with the following symbol



2-8. ELECTRICAL CONNECTION (Continued)

The tables below shows electrical ratings for the HEC-103,104, 123 & 124.

Model Number	Ph	Volts	Watts	Amps	Model Number	Ph	Volts	Watts	Amps
HEC-104 (3 shelf)	1	208	3366	16.2	HEC-103 (3 shelf)	1	208	2380	11.4
HEC-104 (3 shelf)	3	208	3366	11.8	HEC-103 (3 shelf)	3	208	2380	8.0
HEC-104 (3 shelf)	1	240	3366	14.0	HEC-103 (3 shelf)	1	240	2380	9.9
HEC-104 (3 shelf)	3	240	3366	10.2	HEC-103 (3 shelf)	3	240	2380	6.9
HEC-104 (3 shelf)	1	220-240	3092	13.4	HEC-103 (3 shelf)	1	220-240	2186	9.5
HEC-104 (3 shelf)	3	220-240	3092	9.8	HEC-103 (3 shelf)	3	220-240	2186	6.4
HEC-104 (3 shelf)	3	380-415	3092	6.6	HEC-103 (3 shelf)	3	380-415	2186	4.4
HEC-104 (4 shelf)	1	208	3931	18.9	HEC-103 (4 shelf)	1	208	2802	13.5
HEC-104 (4 shelf)	3	208	3931	11.9	HEC-103 (4 shelf)	3	208	2802	8.3
HEC-104 (4 shelf)	1	240	3931	16.4	HEC-103 (4 shelf)	1	240	2802	11.7
HEC-104 (4 shelf)	3	240	3931	10.3	HEC-103 (4 shelf)	3	240	2802	7.2
HEC-104 (4 shelf)	1	220-240	3612	15.7	HEC-103 (4 shelf)	1	220-240	2574	11.2
HEC-104 (4 shelf)	3	220-240	3612	9.9	HEC-103 (4 shelf)	3	220-240	2574	6.6
HEC-104 (4 shelf)	3	380-415	3612	6.6	HEC-103 (4 shelf)	3	380-415	2574	4.4
HEC-123 (2 shelf)	1	208	1958	9.5	HEC-124 (2 shelf)	1	208	2801	13.5
HEC-123 (2 shelf)	1	220-240	1958	8.2	HEC-124 (2 shelf)	1	220-240	2801	11.7
HEC-123 (2 shelf)	1	230	1802	7.8	HEC-124 (2 shelf)	1	230	2579	11.2
HEC-123 (2 shelf)	1	240	1958	8.2	HEC-124 (2 shelf)	1	240	2801	11.7