

## SECTION 2. PARTS INFORMATION

### **2-1. INTRODUCTION**

This section identifies and lists the replaceable parts of the Henny Penny HB-121 Hand Breader/Sifter.

### **2-2. GENUINE PARTS**

Use only genuine Henny Penny parts in your unit. Using a part of lesser quality or substitute design may result in unit damage or personal injury.

### **2-3. HOW TO FIND PARTS**

To find items you want to order from the Parts List, proceed as follows:

1. Refer to the exploded drawing in this section to identify the part needed.
2. Use the item number from the exploded drawing to locate the corresponding part in the parts list in this section. In this list will be the Henny Penny part number and description of the part.

### **2-4. HOW TO ORDER PARTS**

Once the part you want to order has been found in the Part List, write down the following information:

1. From the exploded drawing and Parts List (Sample)
 

Item Number	37
Part Number	15232
Description	Sifter Bearing
2. From the data plate (Sample)
 

Product Number	HB121.0
Serial Number	00100
Voltage	120 V

### **2-5. PRICES**

Your distributor has a price parts list and will be glad to inform you of the cost of your parts order.

### **2-6. DELIVERY**

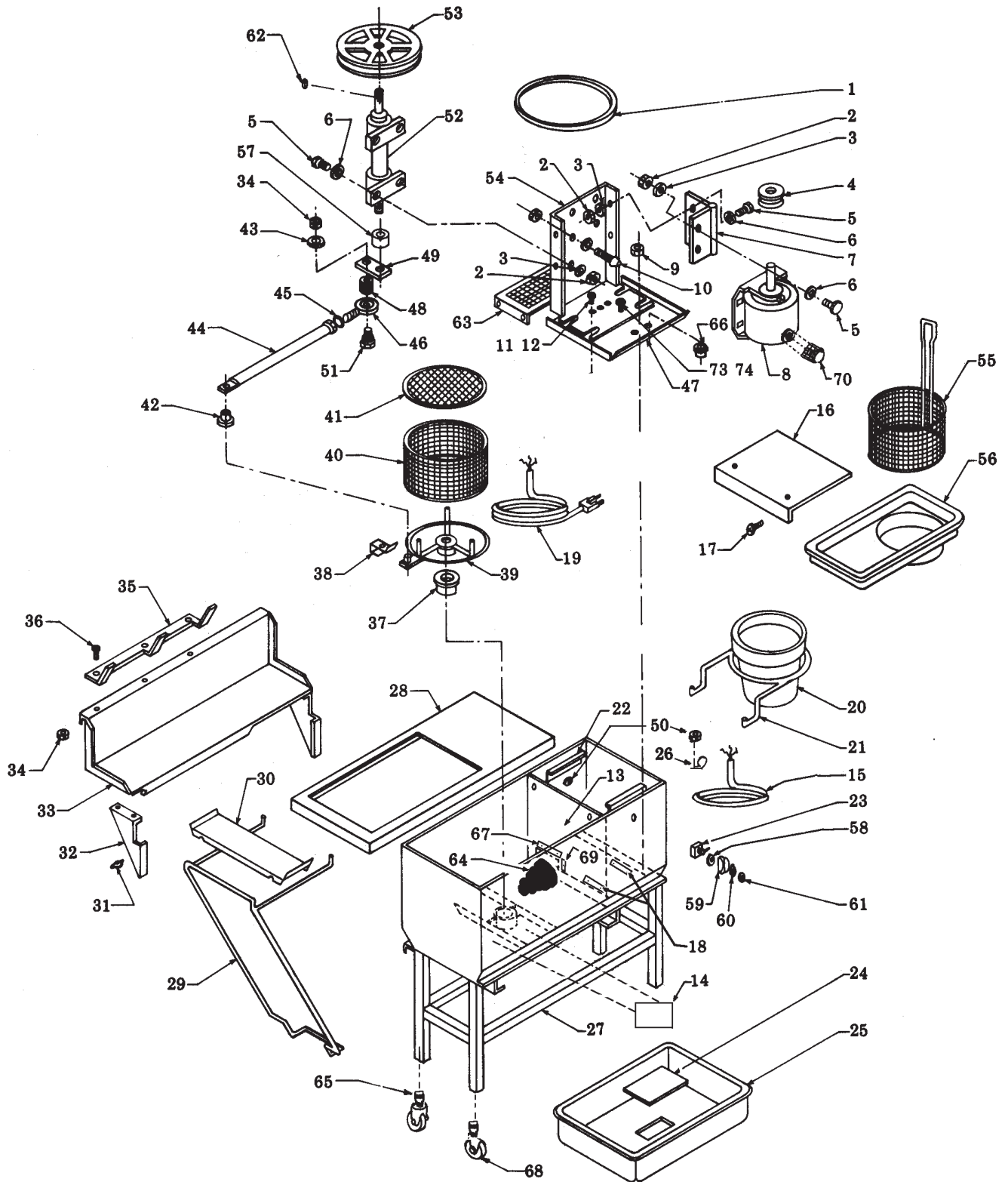
Commonly replaced items are stocked by your independent Henny Penny distributor and will be sent out when your order is received. Other parts will be ordered by the distributor from Henny Penny Corporation. Normally, these will be sent to your distributor within three working days.

### **2-7. WARRANTY**

All replacement parts (except lamps and fuses) are covered under warranty for 90 days against manufacturing defects and workmanship. If damage occurs during shipping, notify the carrier at once so that a claim may be properly filed. Refer to the warranty in this manual for other rights and limitations.

### **3-7. RECOMMENDED SPARE PARTS FOR DISTRIBUTORS**

Recommended replacement parts, stocked by your distributor, are indicated with ✓ in the parts lists. Please use care when ordering recommended parts, because all voltages and variations are marked. Distributors should order parts based upon common voltages and equipment sold in their territory.



**EXPLODED VIEW OF  
HB-121 HAND BREADER/SIFTER**

**HAND BREADER/SIFTER HB-121**

No.	Part No.	Description	Qty.
✓ 1	15254	Belt	1
2	NS01-003	Nut (5/16-18)	8
3	LW01-004	Lockwasher (5/16)	8
4	15261	Sheave Driver Pulley (1.75 OD-1/2" Bore) - 120 V units	1
4	63108	Sheave Driver Pulley (2.00 OD-1/2" Bore) - 240 V units	1
5	SC01-026	Screw (5/16-18 x 3/4)	8
6	WA01-001	Washer (5/16 Flat)	8
7	15269	Hinge	1
✓ 8	63106	Motor - 120 V-60 Hz (1/4 hp - CW rotation)	1
✓ 8	63107	Motor - 240 V-50 Hz (1/4 hp - CW rotation)	1
✓ 8	14300	Motor And Hinge Kit (240 volt units built before 10-13-00)	1
	63105	Motor - 120/240 V-50/60 Hz	1
	63108	Sheave, Driver	1
	15269	Hinge	1
9	NS02-002	Nut (1/4-20 Hex Keps)	10
10	15256	Adjustment Foot Assembly	1
11	SC01-002	Screw (#10-32 x 1/2" Truss Head)	2
12	NS02-001	Nut (#10-32 Hex Keps)	2
13	15884	Partition	1
14	15230	Instructions Decal	1
15	15700	Switch Cord Assembly	1
15	74519	Cord - AUS Power	1
16	15889	Cover Plate Assembly	1
	15597	Wiring Diagram Decal	1
17	SC04-003	Screw (#8-32 x 3/8 PH Pan Head)	2
18	15349	Motor Spacers	2
19	15701	Cord w/Plug (7'long, Type 16/3 SJ)	1
19	74415	Cord - Sub Assy AUS	1
20	15300	Dip Pot	1
21	15252	Dip Pot Holder	1
22	15560	Slide - Cover	2
✓ 23	22195	Switch	1
24	15115	Lug Plug	2
25	15716	Breeding Lug	2
26	EF02-032	Clamp - Cord	1
27	15880	Bin and Frame - Right Hand	1
27	15881	Bin and Frame - Left Hand	1
27	15944	Bin and Frame-K-Mart - Left Hand	1
28	15900	Top	1
29	15253	Tray Rack	1
30	15241	Pan Support	1
31	NS03-003	Nut, Wing (#10-24)	4
32	15227	Gusset - Left	1
32	15352	Gusset - Right	1
33	15875	Back Splash - Left	1
33	15876	Back Splash - Right	1
34	NS02-006	Nut (# 10-24 Hex Keps)	3
35	15228	Basket Hanger	1
36	SC01-015	Carriage Bolt (#10-24 x 1/2)	3
37	15232	Sifter Bearing	1
38	15233	Spring - Retainer	1
39	15284	Basket Holder	1

✓ recommended parts

# HAND BREADER/SIFTER HB-121

No.	Part No.	Description	Qty.
40	15247	Basket Wall	1
41	15281	Basket Bottom	1
42	15231	Bearing Push Rod	1
43	LW01-001	Lockwasher - 3/8"	1
44	15260	Push Rod	1
45	NS01-020	Nut (3/8-24)	1
√ 46	15346	Rod End - Bearing	1
47	15702	Guard - Drive	1
48	14083	Kit - HB-120/HB-121 - Mandrel 5/8 (SN: KC0404001 & below)	1
48	26386	Spacer Foot (SN: KC0404002 & above)	1
√ 49	14083	Kit - HB-120/HB-121 - Mandrel 5/8 (SN: KC0404001 & below)	1
√ 49	66162	Eccentric (SN: KC0404002 & above)	1
50	NS02-006	Nut - Clamp/Ground	6
51	SC01-069	Bolt - Hex (3/8-16 x 1-1/2")	1
√ 52	14083	Kit - HB-120/HB-121 - Mandrel 5/8 (SN: KC0404001 & below)	1
√ 52	67190	Assy - Shaft and Bearings (SN: KC0404002 & above)	1
	66161	Shaft(SN: KC0404002 & above) (SN: KC0404001 & below use 14083)	1
	21180	Pillow Block Assembly	2
53	15170	Sheave - Driven (Pulley, 8.00 O.D. x 1/2' Bore)	1
54	15246	Drive Mounting Bracket	1
55	12140	Dip Basket	1
56	12176	Plastic Drip Tray	1
57	14083	Kit - HB-120/HB-121 - Mandrel 5/8 (SN: KC0404001 & below)	1
57	(use 14083)	Eccentric - Spacer	1
58	EF02-009	Nut - Hex Switch	1
59	15302	Guard - Switch	1
60	22197	Plate On/Off Switch	1
61	EF02-010	Nut - Switch	1
62	15163	Key - 3/16" x 1"	1
63	15439	Panel - Access - Bottom	1
64	15888	Boot	1
65	26534	Caster Unit (without brake)	2
66	EF02-047	Bushing - Strain Relief	1
67	15891	Boot Clamp - 2 Hole	2
68	26533	Caster Unit (Brake)	2
69	15887	Boot Clamp - 1 Hole	2
70	EF02-016	Strain Relief	1
√ 71	15624	Microswitch (Canada Only) (Not Shown)	2
72	05019	Bun Pan (Not Shown)	1
73	15895	Bin Corners (Not Shown)	4

√ recommended parts

