

GRILL-MAX EXPRESS

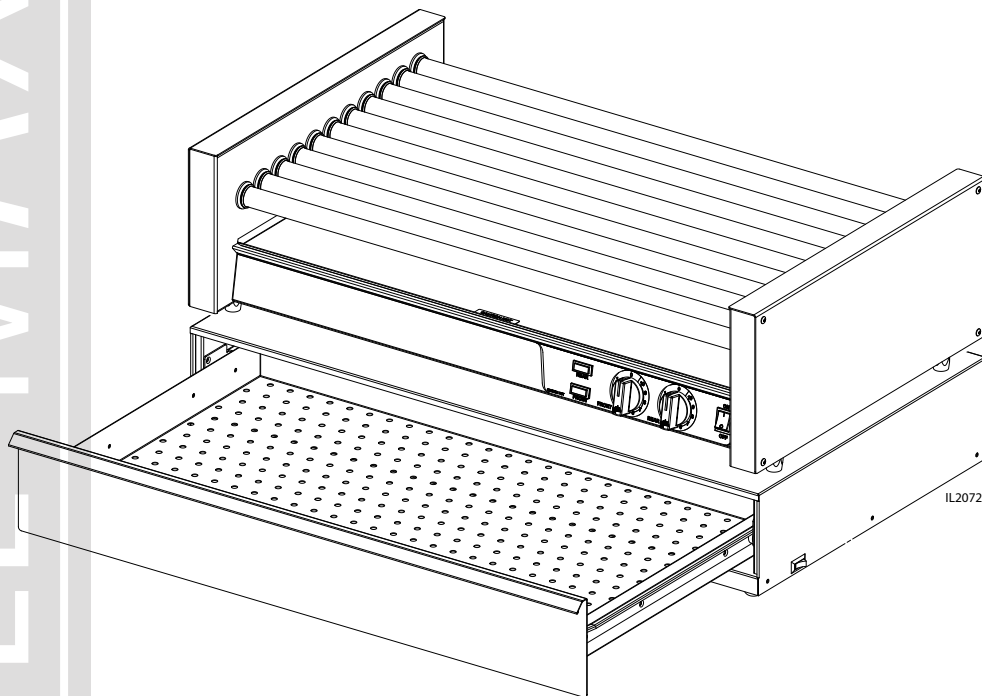
GRILL-MAX EXPRESS

ROLLER GRILLS
X30, X45, X50, X75
Infinite Controls

BUN WARMERS
XBW-30, XBW-50

Installation and Operation Instructions

2M-Z13702 Rev.B 11/11/2011



SAFETY SYMBOL



These symbols are intended to alert the user to the presence of important operating and maintenance instructions in the manual accompanying the appliance.

RETAIN THIS MANUAL FOR FUTURE REFERENCE NOTICE

Using any part other than genuine Star factory supplied parts relieves the manufacturer of all liability.

Star reserves the right to change specifications and product design without notice. Such revisions do not entitle the buyer to corresponding changes, improvements, additions or replacements for previously purchased equipment.

Due to periodic changes in designs, methods, procedures, policies and regulations, the specifications contained in this sheet are subject to change without notice. While Star International Holdings Inc., Company exercises good faith efforts to provide information that is accurate, we are not responsible for errors or omissions in information provided or conclusions reached as a result of using the specifications. By using the information provided, the user assumes all risks in connection with such use.

MAINTENANCE AND REPAIRS

Contact your local authorized service agent for service or required maintenance.

Please record the model number, serial number, voltage and purchase date in the area below and have it ready when you call to ensure a faster service.

Model No. _____

Serial No. _____

Voltage _____

Purchase Date _____

Authorized Service Agent Listing

Reference the listing provided with the unit

or

for an updated listing go to:

Website: www.star-mfg.com
E-mail Service@star-mfg.com

Service Help Desk

Business Hours: 8:00 am to 4:30 p.m. Central Standard Time

Telephone: (314) 678-6303

Fax: (314) 781-2714

E-mail Parts@star-mfg.com
Service@star-mfg.com
Warranty@star-mfg.com

Website: www.star-mfg.com

Mailing Address: Star International Holdings Inc., Company
10 Sunnen Drive
St. Louis, MO 63143
U.S.A

TABLE OF CONTENTS

	PAGE NUMBER
GENERAL SAFETY INFORMATION	3
GENERAL INSTALLATION INFORMATION	4
Connection Load & Specifications	4
GENERAL OPERATING INSTRUCTIONS	5
Cleaning	5
ROLLERGRILL EXPLODED VIEW	6
PARTS LIST	
30 MODEL SERIES	7
45 MODEL SERIES	8
50 MODEL SERIES	9
75 MODEL SERIES	10
WIRING DIAGRAM	11
BUN WARMER EXPLODED VIEW	12
PARTS LIST	
XBW-30 & XBW-50 MODEL	13
WARRANTY	14



CAUTION

GENERAL SAFETY INFORMATION

This equipment is designed and sold for commercial use only by personnel trained and experienced in its operation and is not sold for consumer use in and around the home nor for use directly by the general public in food service locations.

Before using your new equipment, read and understand all the instructions & labels associated with the unit prior to putting it into operation. Make sure all people associated with its use understand the units operation & safety before they use the unit.

All shipping containers should be checked for freight damage both visible and concealed. This unit has been tested and carefully packaged to insure delivery of your unit in perfect condition. If equipment is received in damaged condition, either apparent or concealed, a claim must be made with the delivering carrier.

Concealed damage or loss - if damage or loss is not apparent until after equipment is unpacked, a request for inspection of concealed damage must be made with carrier within 15 days. Be certain to retain all contents plus external and internal packaging materials for inspection. The carrier will make an inspection and will supply necessary claim forms.

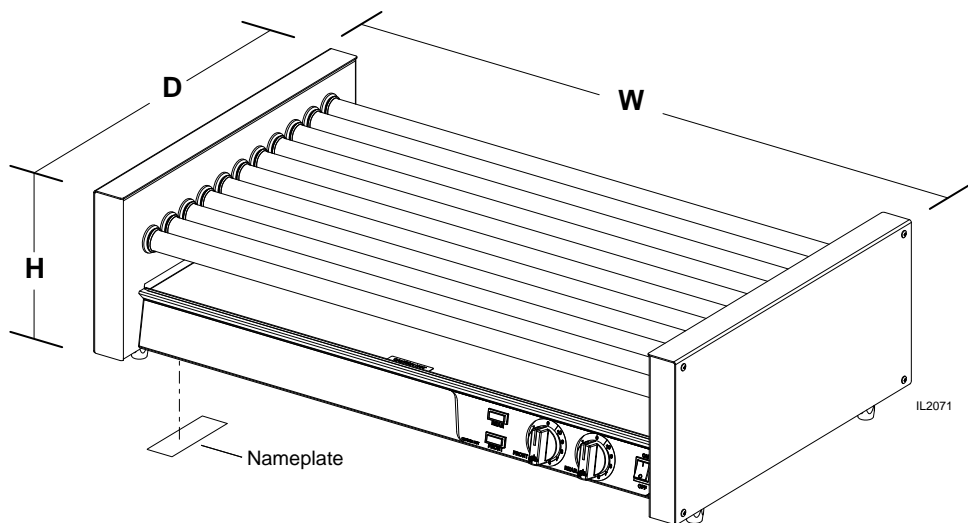
GENERAL INSTALLATION INFORMATION

The grill should be connected to a wall type receptacle, a direct line or individual branch circuit. An individual branch circuit is preferred. If connected to an overloaded circuit the grill will not operate properly. The unit should be level when installed. Adjustable 1-inch legs are standard on all models.

Bun Warmers must be level for self closing feature.

This grill is equipped for the voltage shown on the nameplate.

It will operate on alternating current only, however, the specified voltage must be applied.



CONNECTION LOAD:

Value Roller Grill							
Model No	(W) Width	(D) Depth	(H) Height	Voltage	Wattage	Amps	Plug
X30	23-3/4"	20-5/8"	10"	120	1150	9.6	5-15P
X45		28-1/2"			1650	13.8	
X50	20-5/8"	1535			12.8		
X75	35-3/4"	28-1/2"		120	1730	14.4	5-20P
				240	2400	10	6-15P
Value Bun Box							
XBW30	23-3/4"	20-5/8"	6-1/4"	120	35	0.3	5-15P
XBW50	35-3/4"				50	0.4	

DO NOT CONNECT TO DIRECT CURRENT (DC).



WARNING

IMPORTANT


UNLEVEL UNITS COULD RESULT IN HAVING PRODUCT TRAVEL FROM ONE SIDE TO THE NEXT, OVER A PERIOD OF TIME.


GENERAL OPERATING PROCEDURES

The main switch located on the control panel controls all the power to the unit. With the main switch on, the rollers will turn, but no heat will be supplied unless the heat controls are turned on. For flexibility the heating section of the grill is divided into two individually controlled heat sections. The right control regulates the heat to the rear section (grey roller seals) and the left control regulates the heat to the front section (black roller seals). The switch is lighted to indicate when the unit is turned on. A signal light is provided for each heat control and indicates when the heated section is on.

COOKING

The heat controls provide an infinite range of settings for a wide variety of food products and installation conditions. The size, content and shape of the product and the installation of any sanitary food shields or sneeze guards will determine the proper heat setting. The National Sanitation Foundation requires that perishable foods be kept at 140°F or above during serving periods. Do not keep the food product on a low setting for more than two hours. The product should be kept refrigerated until ready for use. Cooking time will vary depending on the starting temperature and the qualities of the product. For best results when cooking hot dogs use a hot dog made for grilling.


CAUTION **USE ONLY PLASTIC OR COATED UTENSILS FOR HANDLING THE FOOD PRODUCT. METAL COULD SCRATCH THE ROLLER COATING AND AFFECT THE CLEAN ABILITY OF THE ROLLERS.**

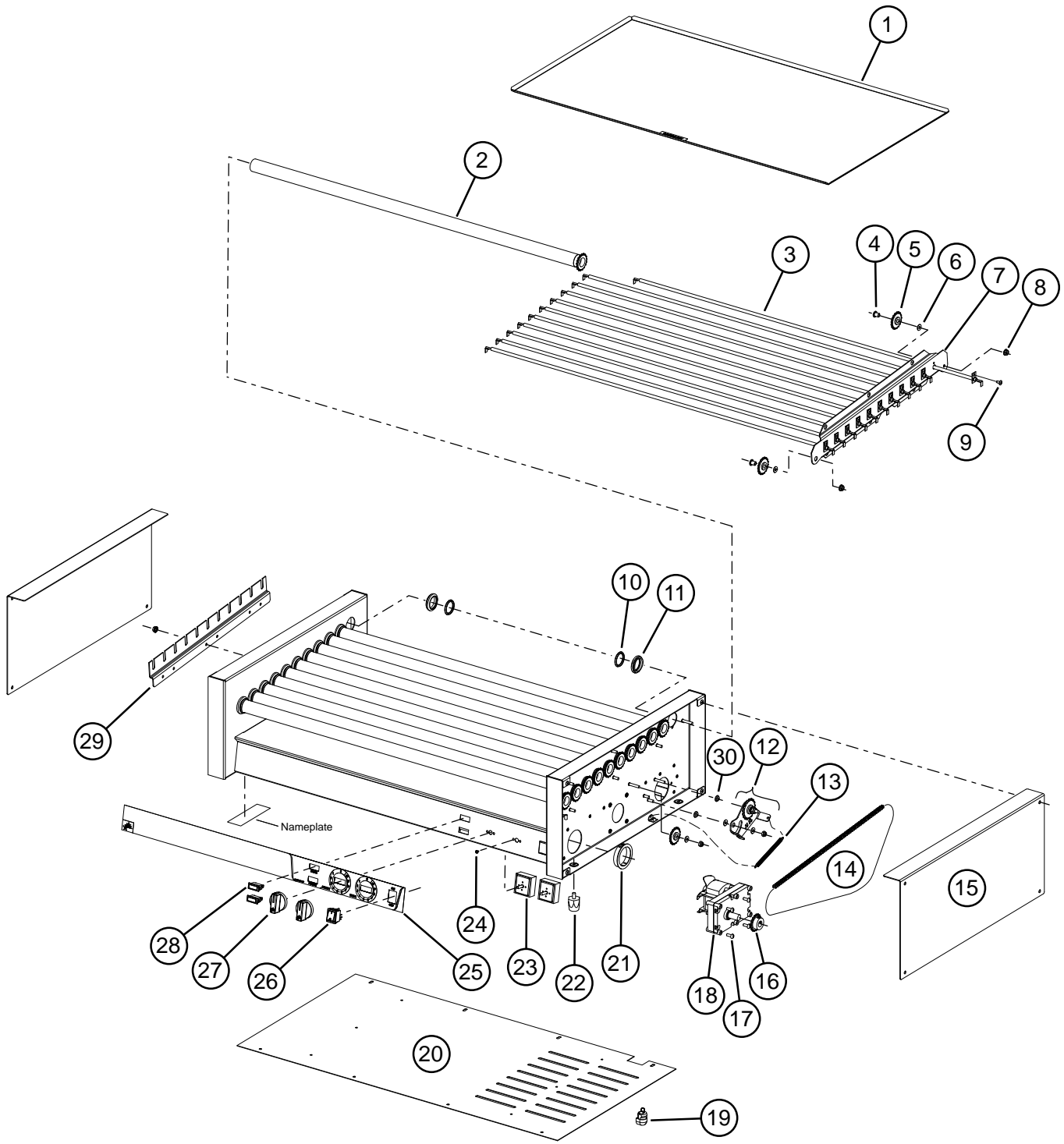

CAUTION **DO NOT USE STEEL WOOL OR ABRASIVE CLEANERS ON THE ROLLERS. SCRAPES WILL VOID THE WARRANTY. USE CAUTION WHEN CLEANING A HOT GRILL TO PREVENT BURNS OR BODILY INJURY.**

CLEANING

Before cooking for the first time, wash the rollers with mild soap and water using a soft cloth. Do not use metal utensils when cooking. Scratches and scrapes will hamper the ability to easily clean the rollers. Never use steel wool or abrasive cleaners on the rollers. This will damage the finish and the roller bearings. The rollers clean most easily when hot. Use caution when cleaning to prevent burns and bodily injury. Clean the rollers with a clean wet cloth. Wipe from the ends to the center to prevent forcing debris into the roller seals. Do not allow the food product to build up and bake onto the roller surface. The exterior of the unit should be cleaned using a mild detergent or non-abrasive cleaner. Clean the entire unit daily to insure long life and satisfactory performance as well as to maintain an attractive appearance. Do not clean with water jet equipment.

MAINTENANCE AND REPAIRS

Contact the factory, a service representative or a local service company for service or required maintenance. Replacement cord sets must be purchased from Star International Holdings Inc., Company.



VALUE ROLLER GRILL: MODEL X30, X45, X50, X75

GRILL-MAX EXPRESS

SK2473

REV. B

7/20/2011

PARTS LIST

July 18, 2011, Rev. B

VALUE ROLLER GRILL MODEL X30, X30S, X30SG, X30F, X30SF, X30SGF				
Fig No.	Part Number	Description	Quantity	Applications
1	A5-Z2185	DRIP TRAY 30	1	
2	A5-RG3001	ROLLER ASSY CHROME	11	X30, X30F
	PS-RG3078	ROLLER ASSY POLY WELDED		X30S, X30SF
	A5-RG4565	ROLLER ASY HIGRIP 30S/45S		X30SG, X30SGF
3	2N-Z2178	ELEMENT 120V 30/45	11	
4	2A-Z8017	BUSHING IDLER	4	
5	2P-Z8392	IDLER SPROCKET ASSEMBLY	4	
6	2C-1810	WASHER 3/16 BURR STL NP	10	
7	A5-Z13684	CHAIN GUIDE-11 COUNT	1	
8	2C-Z0498	NUT 10-24 NYLK HEX STL ZP	4	
9	2C-6349	SCREW #8X3/8 B THP STL NP	27	
10	2I-Z13659	INNER SEAL-BLACK	12	FRONT ROLLERS
	2I-Z13660	INNER SEAL-LIGHT GRAY	10	BACK ROLLERS
11	2P-Z13661	TUBE GUIDE, 16 GA, BLACK	22	
12	A5-RG30153	ASY,CHN TENSIONER W/SPKT	1	
13	2P-Z8074	EXTENSION SPRING	1	
14	2P-Z13743	#25 ROLLER CHAIN,188TEETH	1	X30, X30S, X30SG
	2P-Z13744	#25 ROLLER CHAIN,184TEETH		X30F, X30SF, X30SFG
15	A5-Z13666	COVER,END PANEL,SLT,11CT	2	X30, X30S, X30SG
	A5-Z13669	COVER-END PANEL-FLAT-11CT		X30F, X30SF, X30SFG
16	2P-Z11853	MOTOR SPROCKET	1	
17	2C-1506	SCREW 10-32X1/2 RHP STL	4	
	2C-200121	WASHER #10 SPLIT SS	4	
18	2U-Z11854	MOTOR GEAR, 120V	1	
19	2K-Y3240	BUSHING HEYCO SR 17-2	1	
20	A5-Z13677	COVER,BODY PANEL, X30	1	
21	2K-Y8571	BUSHING SNAP 2 1/8	2	
22	2A-Z11501	FOOT 1" SOLID RUBBER	4	
23	2J-Z14323	INFINITE CTL, 120V	2	
25	2M-Z13657	OVERLAY, MODEL X30, X45	1	
26	2E-Z1858	SWITCH-LIGHTED	1	
27	2R-Z1854	KNOB-CONTROL	2	
28	2J-Z13654	PILOT LIGHT RECT-RED-120V	2	
29	A5-Z13685	ELEMENT RETAINER,LWR-11CT	1	
30	2C-Z14533	WASHER, SHOULDER IDLER ARM	2	
NI	2P-Z0584	TONGS-PLASTIC 9"	1	
NI	C3-G8021	CORD ASSEMBLY 14-3 120V	1	
NI	A5-RG2006	WIRE ASSEMBLY #5	1	

PARTS LIST

July 18, 2011, Rev. B

VALUE ROLLER GRILL MODEL X45, X45S, X45SG, X45F, X45SF, X45SGF				
Fig No.	Part Number	Description	Quantity	Applications
1	A5-Z2186	DRIP TRAY 45	1	X45
2	A5-RG3001	ROLLER ASSY CHROME	16	X45
	PS-RG3078	ROLLER ASSY POLY WELDED		X45S
	A5-RG4565	ROLLER ASY HIGRIP 30S/45S		X45SG
3	2N-Z2178	ELEMENT 120V 30/45	16	
4	2A-Z8017	BUSHING IDLER	4	
5	2P-Z8392	IDLER SPROCKET ASSEMBLY	4	
6	2C-1810	WASHER 3/16 BURR STL NP	10	
7	A5-Z13686	CHAIN GUIDE-16 COUNT	1	X45
8	2C-Z0498	NUT 10-24 NYLK HEX STL ZP	4	
9	2C-6349	SCREW #8X3/8 B THP STL NP	36	
10	2I-Z13659	INNER SEAL-BLACK	16	FRONT ROLLERS
	2I-Z13660	INNER SEAL-LIGHT GRAY		BACK ROLLERS
11	2P-Z13661	TUBE GUIDE, 16 GA, BLACK	32	
12	A5-RG4594	ASY,CHN TENSIONER W/SPKT	1	X45, X45S, X45SG
	A5-RG4596	ASY,CHN TNSR -X45F, X75F		X45F, X45SF, X45SGF
13	2P-Z8074	EXTENSION SPRING	1	
14	2P-Z13745	#25 ROLLER CHAIN,246TEETH	1	X45, X45S, X45SG
	2P-Z13746	#25 ROLLER CHAIN, 242TEETH		X45F, X45SF, X45SGF
15	A5-Z13672	COVER,END PANEL,SLT,16CT	2	X45, X45S, X45SG
	A5-Z13675	COVER,END PANEL,FLAT, 16CT		X45F, X45SF, X45SGF
16	2P-Z11853	MOTOR SPROCKET	1	
17	2C-1506	SCREW 10-32X1/2 RHP STL	4	
	2C-200121	WASHER #10 SPLIT SS		
18	2U-Z11854	MOTOR GEAR, 120V	1	
19	2K-Y3240	BUSHING HEYCO SR 17-2	1	
20	A5-Z13679	COVER,BODY PANEL, X45	1	X45
21	2K-Y8571	BUSHING SNAP 2 1/8	2	
22	2A-Z11501	FOOT 1" SOLID RUBBER	4	
23	2J-Z14323	INFINITE CTL, 120V	2	
25	2M-Z13657	OVERLAY, MODEL X30, X45	1	
26	2E-Z1858	SWITCH-LIGHTED	1	
27	2R-Z1854	KNOB-CONTROL	2	
28	2J-Z13654	PILOT LIGHT RECT-RED-120V	2	
29	A5-Z13687	ELEMENT RETAINER,LWR-16CT	1	X45
30	2C-Z14533	WASHER, SHOULDER IDLER ARM	2	
NI	2P-Z0584	TONGS-PLASTIC 9"	1	
NI	C3-G8021	CORD ASSEMBLY 14-3 120V	1	
NI	A5-RG4512	WIRE ASSY LONG	2	

PARTS LIST

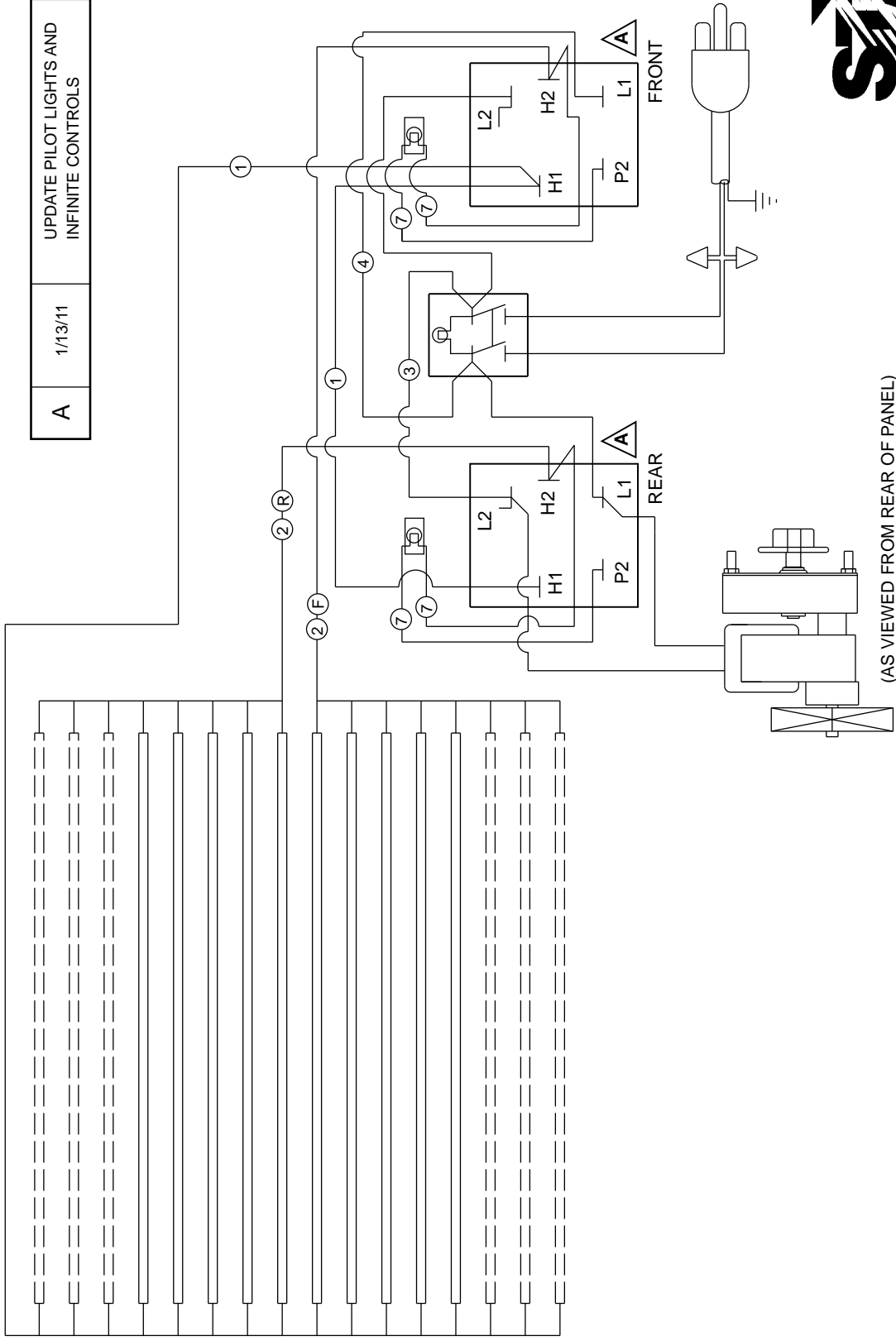
November 11, 2011, Rev. B

VALUE ROLLER GRILL MODEL X50, X50S, X50SG, X50F, X50SF, X50SGF				
Fig No.	Part Number	Description	Quantity	Applications
1	A5-Z2305	DRIP TRAY 50	1	
2	A5-RG7501	ROLLER ASSY CHROME	11	X50, X50F
	A5-RG5044	ROLLER ASSY 07B 50S/75S		X50S, X50SF
	A5-RG5057	ROLLER ASY HIGRIP 50SG/75SG		X50SG, X50SGF
3	2N-Z2179	ELEMENT 120V 50/75	11	
4	2A-Z8017	BUSHING IDLER	4	
5	2P-Z8392	IDLER SPROCKET ASSEMBLY	4	
6	2C-1810	WASHER 3/16 BURR STL NP	10	
7	A5-Z13684	CHAIN GUIDE-11 COUNT	1	
8	2C-Z0498	NUT 10-24 NYLK HEX STL ZP	4	
9	2C-6349	SCREW #8X3/8 B THP STL NP	27	
10	2I-Z13659	INNER SEAL-BLACK	12	FRONT ROLLERS
	2I-Z13660	INNER SEAL-LIGHT GRAY	10	BACK ROLLERS
11	2P-Z13661	TUBE GUIDE, 16 GA, BLACK	22	
12	A5-RG30153	ASY,CHN TENSIONER W/SPKT	1	
13	2P-Z8074	EXTENSION SPRING	1	
14	2P-Z13743	#25 ROLLER CHAIN,188TEETH	1	X50, X50S, X50SG
	2P-Z13744	#25 ROLLER CHAIN,184TEETH		X50F, X50SF, X50SGF
15	A5-Z13666	COVER,END PANEL,SLT,11CT	2	X50, X50S, X50SG
	A5-Z13669	COVER-END PANEL-FLAT-11CT		X50F, X50SF, X50SGF
16	2P-Z11853	MOTOR SPROCKET	1	
17	2C-1506	SCREW 10-32X1/2 RHP STL	4	
	2C-200121	WASHER #10 SPLIT SS		
18	2U-Z11854	MOTOR GEAR, 120V	1	
19	2K-Y3240	BUSHING HEYCO SR 17-2	1	
20	A5-Z13679	COVER,BODY PANEL, X50	1	
21	2K-Y8571	BUSHING SNAP 2 1/8	2	
22	2A-Z11501	FOOT 1" SOLID RUBBER	4	
23	2J-Z14323	INFINITE CTL, 120V	2	
25	2M-Z13658	OVERLAY, MODEL X50, X75	1	
26	2E-Z1858	SWITCH-LIGHTED	1	
27	2R-Z1854	KNOB-CONTROL	2	
28	2J-Z13654	PILOT LIGHT RECT-RED-120V	2	
29	A5-Z13684	ELEMENT RETAINER,LWR-11CT	1	
30	2C-Z14533	WASHER, SHOULDER IDLER ARM	2	
NI	2P-Z0584	TONGS-PLASTIC 9"	1	
NI	C3-G8021	CORD ASSEMBLY 14-3 120V	1	
NI	A5-RG2006	WIRE ASSEMBLY #5	2	

PARTS LIST

July 18, 2011, Rev. B

VALUE ROLLER GRILL MODEL X75, X75S, X75SG, X75F, X75SF, X75SGF				
Fig No.	Part Number	Description	Quantity	Applications
1	A5-Z2306	DRIP TRAY 75	1	
2	A5-RG7501	ROLLER ASSY CHROME	16	X75, X75F
	A5-RG5044	ROLLER ASSY 07B 50S/75S		X75S, X75SF
	A5-RG5057	ROLLER ASY HIGRIP 50SG/75SG		X75SG, X75SGF
3	2N-Z2982	ELEMENT 120V, 105W	16	120V
	2N-Z2193	ELEMENT 230V 50/75		240V
4	2A-Z8017	BUSHING IDLER	4	
5	2P-Z8392	IDLER SPROCKET ASSEMBLY	4	
6	2C-1810	WASHER 3/16 BURR STL NP	10	
7	A5-Z13686	CHAIN GUIDE-16 COUNT	1	
8	2C-Z0498	NUT 10-24 NYLK HEX STL ZP	4	
9	2C-6349	SCREW #8X3/8 B THP STL NP	36	
10	2I-Z13659	INNER SEAL-BLACK	16	FRONT ROLLERS
	2I-Z13660	INNER SEAL-LIGHT GRAY	16	BACK ROLLERS
11	2P-Z13661	TUBE GUIDE, 16 GA, BLACK	32	
12	A5-RG4594	ASY,CHN TENSIONER W/SPKT	1	X75, X75S, X75SG
	A5-RG4595	ASY,CHN TNSR -X45F, X75F		X75F, X75SF, X75SGF
13	2P-Z8074	EXTENSION SPRING	1	
14	2P-Z13745	#25 ROLLER CHAIN,246TEETH	1	X75, X75S, X75SG
	2P-Z13746	#25 ROLLER CHAIN,242TEETH		X75F, X75SF, X75SGF
15	A5-Z13672	COVER,END PANEL,SLT,16CT	2	X75, X75S, X75SG
	A5-Z13675	COVER,END PANEL-FLAT-16CT		X75F, X75SF, X75SGF
16	2P-Z11853	MOTOR SPROCKET	1	
17	2C-1506	SCREW 10-32X1/2 RHP STL	4	
	2C-200121	WASHER #10 SPLIT SS		
18	2U-Z11854	MOTOR GEAR-120V/60HZ	1	120V
	2U-Z11855	MOTOR GEAR, 240V		240V
19	2K-Y2968	BUSHING STRAIN RELIEF	1	120V
	2K-Y3240	BUSHING HEYCO SR 17-2		240V
20	A5-Z13683	COVER,BODY PANEL, X75	1	
21	2K-Y8571	BUSHING SNAP 2 1/8	2	
22	2A-Z11501	FOOT 1" SOLID RUBBER	4	
23	2J-Z14323	INFINITE CTL, 120V	2	120V
	2J-Z14324	INFINITE CTL, 240V		240V
25	2M-Z13658	OVERLAY, MODEL X50, X75	1	
26	2E-Z1858	SWITCH-LIGHTED	1	
27	2R-Z1854	KNOB-CONTROL	2	
28	2J-Z13654	PILOT LIGHT-RECT, RED 120V	2	120V
	2J-Z13655	PILOT LIGHT-RECT-RED-230V		240V
29	A5-Z13687	ELEMENT RETAINER,LWR-16CT	1	
30	2C-Z14533	WASHER, SHOULDER IDLER ARM	2	
NI	2P-Z0584	TONGS-PLASTIC 9"	1	
NI	A5-RG2034	CORD SET 240V W/TERMINALS	1	
NI	A1-175122	LEAD IN CORD ASSEM	1	
NI	A5-RG4512	WIRE ASSY LONG	2	



A	1/13/11	UPDATE PILOT LIGHTS AND INFINITE CONTROLS
---	---------	---



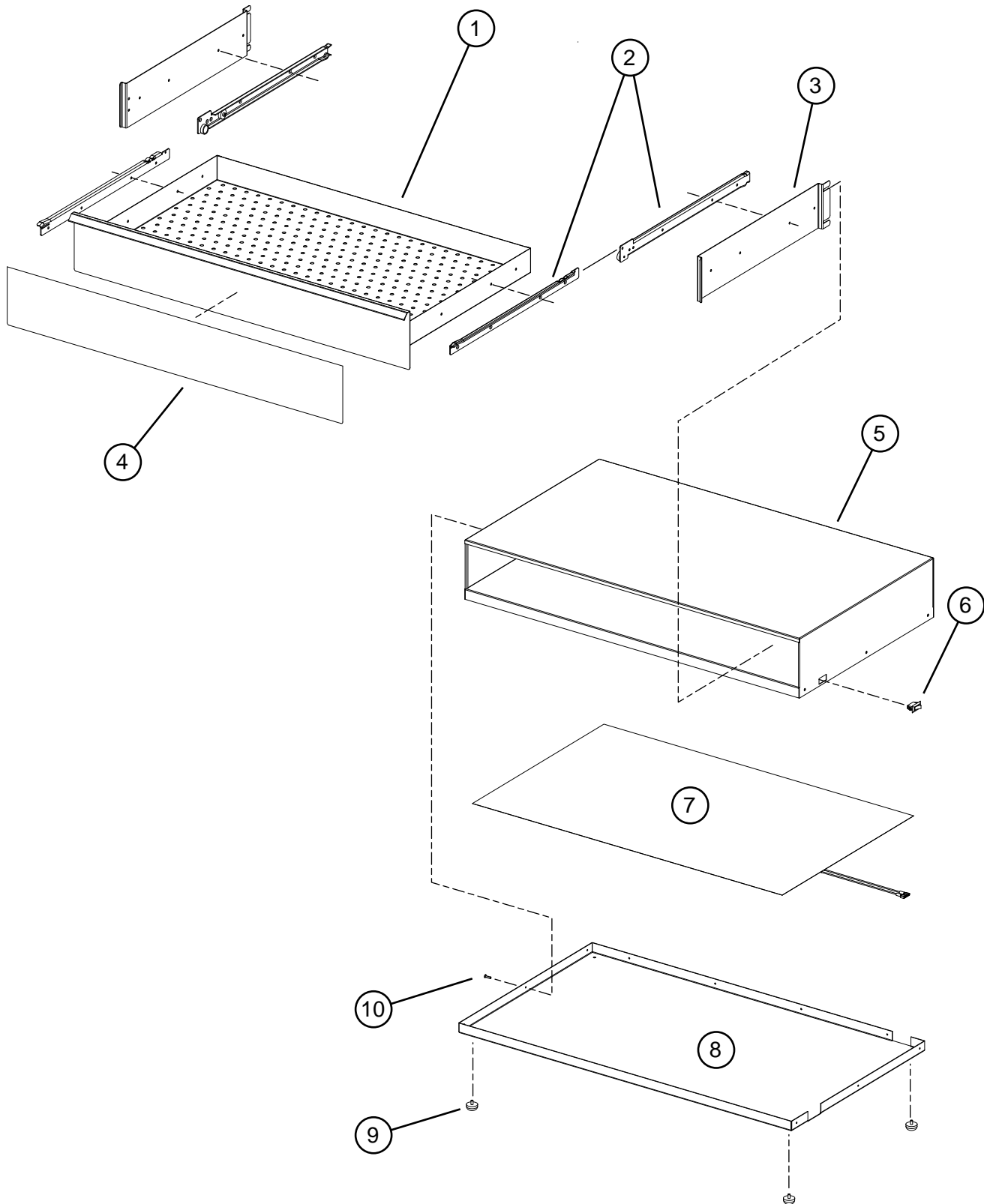
All Grill-Max Express 120V & 240V, 60Hz, WIRE DIAGRAM

THIS DRAWING CONTAINS INFORMATION CONFIDENTIAL TO STAR MFG. INT'L. INC.
 NO REPRODUCTION OR DISCLOSURE OF ITS CONTENTS IS PERMITTED.

STAR MANUFACTURING INTERNATIONAL INC.

SK2469 Rev A

1/13/2011



VALUE BUN WARMER: MODEL XBW30, XBW50

GRILL-MAX EXPRESS

SK2474,

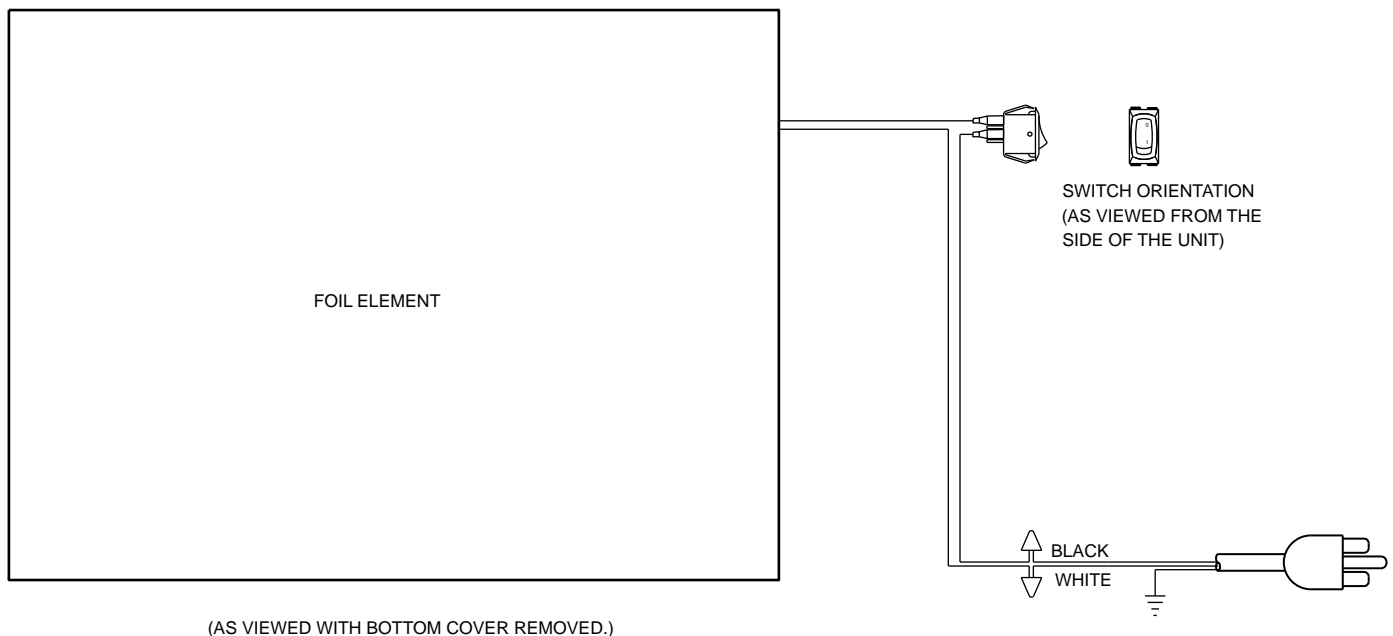
REV -,

8/19/2010

PARTS LIST

August 12, 2011, Rev. B

VALUE LINE BUN WARMER: MODELS XBW-30 & XBW-50				
Fig No	Part No	Description	Qty	Applications
1	A4-BW3023	ASM-DRAWER, XBW-30	1	XBW-30
	A4-BW5035	ASM-DRAWER, XBW-50		XBW-50
2	2R-Z13650	SLIDES-DRAWER,500MM,SS	1	ALL
3	A4-Z13699	BRACKET, DRAWER ROLLERS	2	ALL
4	2M-Z13720	LABEL-DRAWER FRONT,XBW-30	1	XBW-30
	2M-Z13721	LABEL-DRAWER FRONT,XBW-50		XBW-50
5	A4-BW3022	ASM-BODY, XBW-30	1	XBW-30
	A4-BW5034	ASM-BODY, XBW-50		XBW-50
6	2E-Z0091	SWITCH	1	ALL
7	2N-Z13651	ELEMENT,FOIL-20X21-50W120	1	XBW-30
	2N-Z13652	ELEMENT,FOIL-20X33-70W120		XBW-50
	2N-Z15047	ELEMENT,FOIL-50W-230V		XBW-30-230V
	2N-Z15048	ELEMENT,FOIL-70W-230V		XBW-50-230V
8	A4-Z13695	COVER-LOWER BASE, XBW-30	1	XBW-30
	A4-Z13698	COVER-LOWER BASE, XBW-50	1	XBW-50
9	2I-Z13653	FOOT,RUBBER,1 DIA X .5	4	ALL
10	2C-Z6743	SCREW 8-32 X 3/8 FHP SS	10	ALL
NI	E2-215085	LEAD CORD ASSEM	1	120V
	2E-Z0512	CORD SET, CONT EURO 10A		230V
NI	2K-70215	STRAIN RELIEF STR HEYCO	1	ALL
NI	2C-Z12945	WIRE HARNESS	1	ALL



(AS VIEWED WITH BOTTOM COVER REMOVED.)

ALL XBW MODELS 120V & 230V UNITS

WIRE DIAGRAM

GRILL-MAX EXPRESS

SK2475

THOROUGHLY INSPECT YOUR UNIT ON ARRIVAL

This unit has been tested for proper operation before leaving our plant to insure delivery of your unit in perfect condition. However, there are instances in which the unit may be damaged in transit. In the event you discover any type of damage to your product upon receipt, you must immediately contact the transportation company who delivered the item to you and initiate your claim with same. If this procedure is not followed, it may affect the warranty status of the unit.

LIMITED EQUIPMENT WARRANTY

All workmanship and material in Star products have a one (1) year limited warranty on parts & labor in the United States and Canada. Such warranty is limited to the original purchaser only and shall be effective from the date the equipment is placed in service. Star's obligation under this warranty is limited to the repair of defects without charge, by the factory authorized service agency or one of its sub-agencies. Models that are considered portable (*see below*) should be taken to the closest Star service agency, transportation prepaid.

- > Star will not assume any responsibility for loss of revenue.
- > On all shipments outside the United States and Canada, see International Warranty.
- * The warranty period for the JetStar six (6) ounce & Super JetStar eight (8) ounce series popcorn machines is two (2) years.
- * The warranty period for the Chrome-Max Griddles is five (5) years on the griddle surface. See detailed warranty provided with unit.
- * The warranty period for Teflon/Dura-Tec coatings is one year under normal use and reasonable care. This warranty does not apply if damage occurs to Teflon/Dura-Tec coatings from improper cleaning, maintenance, use of metallic utensils, or abrasive cleaners, abrasive pads, product identifiers and point-of-sale attachments, or any other non-food object that comes in continuous contact with the roller coating. This warranty does not apply to the "non-stick" properties of such materials.
- > This warranty does not apply to "Special Products" but to regular catalog items only. Star's warranty on "Special Products" is six (6) months on parts and ninety (90) days on labor.
- > This warranty does not apply to any item that is disassembled or tampered with for any purpose other than repair by a Star Authorized Service Center or the Service Center's sub-agency.
- > This warranty does not apply if damage occurs from improper installation, misuse, wrong voltage, wrong gas or operated contrary to the Installation and Operating instructions.
- > This warranty is not valid on Conveyor Ovens *unless* a "start-up/check-out" has been performed by a Factory Authorized Technician.

PARTS WARRANTY

Parts that are sold to repair out of warranty equipment are warranted for ninety (90) days. The part only is warranted. Labor to replace the part is chargeable to the customer.

SERVICES NOT COVERED BY WARRANTY

1. Travel time and mileage rendered beyond the 50 mile radius limit
2. Mileage and travel time on portable equipment (*see below*)
3. Labor to replace such items that can be replaced easily during a daily cleaning routine, ie; removable kettles on fryers, knobs, grease drawers on griddles, etc.
4. Installation of equipment
5. Damages due to improper installation
6. Damages from abuse or misuse
7. Operated contrary to the Operating and Installation Instructions
8. Cleaning of equipment
9. Seasoning of griddle plates
10. Voltage conversions
11. Gas conversions
12. Pilot light adjustment
13. Miscellaneous adjustments
14. Thermostat calibration and by-pass adjustment
15. Resetting of circuit breakers or safety controls or reset buttons
16. Replacement of bulbs
17. Replacement of fuses
18. Repair of damage created during transit, delivery, & installation OR created by acts of God

PORTABLE EQUIPMENT

Star will not honor service bills that include travel time and mileage charges for servicing any products considered "Portable" including items listed below. These products should be taken to the Service Agency for repair:

- * The Model 510FD Fryer.
- * The Model 526TOA Toaster Oven.
- * The Model J4R, 4 oz. Popcorn Machine.
- * The Model 518CMA & 526CMA Cheese Melter.
- * The Model 12MC & 15MC & 18MCP Hot Food Merchandisers.
- * The Model 12NCPW & 15NCPW Nacho Chip/Popcorn Warmer.
- * All Hot Dog Equipment **except Roller Grills & Drawer Bun Warmers.**
- * All Nacho Cheese Warmers **except Model 11WLA Series Nacho Cheese Warmer.**
- * All Condiment Dispensers **except the Model HPD & SPD Series Dispenser.**
- * All Specialty Food Warmers **except Model 130R, 11RW Series, and 11WSA Series.**
- * All QCS/RCS Series Toasters **except Model QCS3 & RCS3 Series.**
- * All Fast Steamer Models **except Direct Connect Series.**

ALL:

- * Pop-Up Toasters
- * Butter Dispensers
- * Pretzel Merchandisers
(Model 16PD-A Only)
- * Pastry Display Cabinets
- * Nacho Chip Merchandisers
- * Accessories of any kind
- * Sneeze Guards
- * Pizza Ovens
(Model PO12 Only)
- * Heat Lamps
- * Pumps-Manual

The foregoing warranty is in lieu of any and all other warranties expressed or implied and constitutes the entire warranty.

FOR ASSISTANCE

Should you need any assistance regarding the Operation or Maintenance of any Star equipment; write, phone, fax or email our Service Department. In all correspondence mention the Model number and the Serial number of your unit, and the voltage or type of gas you are using.

STAR INTERNATIONAL HOLDINGS INC. COMPANY
Star - Holman - Lang - Wells - Bloomfield - Toastmaster
10 Sunnen Drive, St. Louis, MO 63143 U.S.A.
(314) 678-6303
www.star-mfg.com