

Hoshizaki America, Inc.

Cubelet Ice Dispenser

Model
DCM-270BAH



"A Superior Degree
of Reliability"

www.hoshizaki.com

PARTS LIST



Number: 71195
Issued: 11-2-2001
Revised: 12-8-2008

CONTENTS

Auxiliary Codes.....	3
Note About Ordering Parts	3
Material Abbreviations	4
A. Ice Dispenser Assembly.....	5
B. Frame Assembly	9
C. Icemaking Unit	11
D. Refrigeration Circuit	13
E. Water Circuit	17
F. Control Box (A) Assembly	21
G. Control Box (B) Assembly.....	23
H. Front Panel Assembly.....	24
J. Middle Front Panel/Frame Assembly.....	25
K. Label Location.....	27
L. Shutter Assembly	30
M. Cover Assembly - Bin Top.....	33
N. Accessories & Packaging	35

Auxiliary Codes

DCM-270BAH	L-0	February 2001
	L-1	November 2001
	M-0	December 2001
	M-1	September 2002
	N-0	December 2002
	N-1	November 2003
	P-1	December 2003
	P-2	February 2004
	Q-0	December 2004
	R-0	December 2005
	S-0	January 2007
	T-1	January 2008
	T-2	May 2008
	T-3	December 2008

Auxiliary Code Breakdown

K-0 (A)

-
- Designates the year. "K" indicates the year 2000. Years progress or regress in alphabetical order. "J" is 1999, "L" is 2001, "M" is 2002, and so on. The letters "I" and "O" were skipped.
 - Designates significant part changes within the same year for this model. Base is 0 and this number advances for each change.
 - Designates the month. (A) indicates January, (B) February, and so on. The letter I is skipped. This designation is only included when identifying a parts change within an auxiliary code.

Example: T-1 (A)

-
- "T" indicates 2008.
 - "1" indicates the first significant part change for 2008.
 - (A) indicates January.

Note About Ordering Parts

Most assemblies cannot be ordered as complete units; parts in the assemblies generally must be ordered separately.

Material Abbreviations

ALUMINUM

AL = Aluminum

COPPER

CU = Copper

PLASTIC

ABS = Acrylonitrile -butadiene-styrene
AC = Polyacetal
EVA = Ethylene vinyl acetate
PA = Polyamide = Nylon
PC = Polycarbonate
PE = Polyethylene
PES = Polyester
PETP = Polyethylene terephthalate = Tetlon
PP = Polypropylene
PS = Polystyrene
PTFE = Polytetrafluoroethylene = Teflon
PUR = Polyurethane
PVC = Polyvinyl chloride

RUBBER

VN = Vinyl Nitrile
EPDM = EP rubber
NBR = Nitrile butadiene rubber
NR = Natural rubber
NP = Neoprene
SI.R = Silicone rubber
SY.R = Synthetic rubber
EPH = Epichlorohydrin

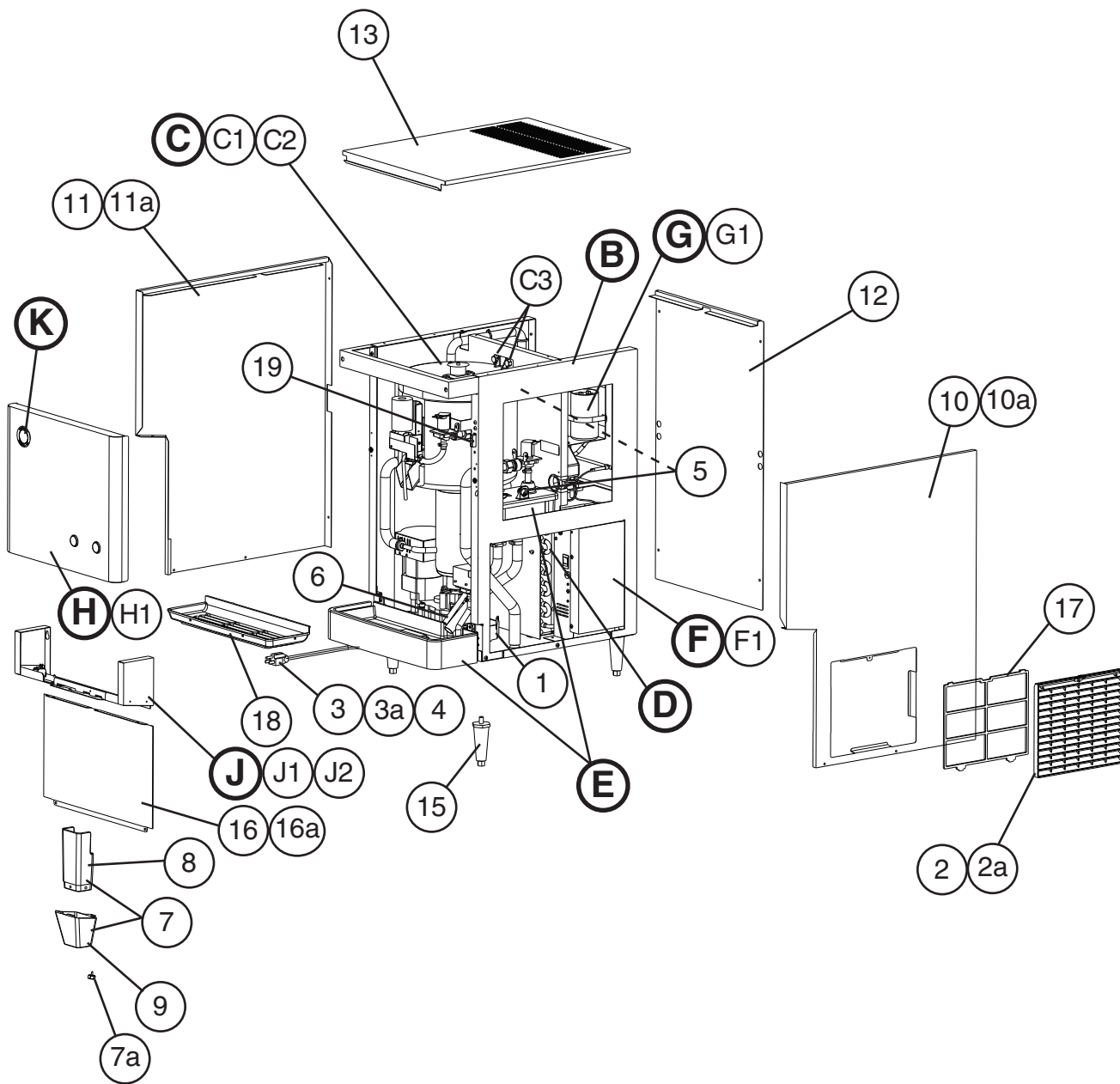
STEEL

GS = Galvanized steel
SS = Stainless steel
PS = Plated steel
PAS = Primed steel

A. Ice Dispenser Assembly

DCM-270BAH

T-2, T-3



Title: **A. Ice Dispenser Assembly** Model: **DCM-270BAH**

Index No.	Description	Material or Model Number	Part Number	Required Number									
				L-0 to M-0	M-1 N-0	N-1 to P-2	Q-0 to S-0 (A-H)	S-0 (J & later)	T-1	T-2	T-3		
B	Frame Assembly	-	1A0537A01	1	-								
			1A0537A02		1	1	1	-					
			1A0786A02					1	1	-			
			1A0786A03								1	1	
C	Icemaking Unit	S-9133	229689A04	1	-								
			229689A06		1	-							
			229689A08			1	1	1	1	1	1	1	
C1	Socket Head Hex Bolt	8x95, SS	7S12-0895	3	3	3	3	3	-				
		8x90, SS	7S12-0890							3	3	3	
C2	Split Lock Washer	8, SS	7L22-0800	3	3	3	3	3	3	3	3		
C3	Thumbscrew	-	415949G04	2	2	2	-						
			415949G08				2	2	2	2	2		
D	Refrigeration Circuit	-	1A0569A01	1	1	1	1	1	1	1	1	-	
			1A1637A01									1	
E	Water Circuit	-	2A1932A01	1	1	1	-						
			2A1932A02				1	-					
			2A4198A01					1	1	1	1		
F	Control Box (A) Assembly	-	2A1993A01	1	1	1	1	-					
			2A4104A01					1	1	1	1		
F1	Truss Head Screw	4x8	7C31-0408	4	4	4	4	4	4	4	4		
G	Control Box (B) Assembly	-	2A1995A01	1	1	1	1	1	1	1	1		
G1	Truss Head Screw	4x8	7C31-0408	2	2	2	2	-					
	T2 Screw		7P31-0408					2	2	2	2		
H	Front Panel	See assembly page for T-2 and later only	2A1955G01	1	1	1	1	1	1	1	-		
	Front Panel Assembly		3A5000A01								1	1	
H1	Flat Head Screw	4x12, SS	7C22-0412	4	4	4	4	-					
	Pop Rivet	-	7172-4200					4	-				
	Flat Head T2 Screw	4x12, SS	7P22-0412						4	-			
	Truss Head Screw	4x8, SS	7C32-0408							1	1		
H2	Taper Collar	-	4H0171-01	4	4	4	4	4	4	-			
H3	Flat Washer	4, SS	7W22-0400	4	4	4	4	4	-				
J	Middle Front Panel Assembly	-	3A1718A01	1	1	1	1	1	1	-			
	Middle Front Frame Assembly		2A4262A02								1	1	
J1	Flat Head Screw	4x12, SS	7C22-0412	2	2	2	2	-					
	Pop Rivet	-	7172-4200					2	-				
	Flat Head T2 Screw	4x12, SS	7P22-0412						2	2	2		
J2	Taper Collar	-	4H0171-01	2	2	2	2	2	2	2	2		
J3	Flat Washer	4, SS	7W22-0400	2	2	2	2	2	-				
K	Label Location	-	3A1796A01	1	-								
			3A1796A02		1	1	1	1	1	-			
			3A4642A01								1	1	
1	Drain Pan-Gear Motor	-	3A0766G01	1	1	1	1	1	1	1	1		
2	Louver (A)	-	103344-07	1	1	1	1	1	1	1	1		
2a	Tapping Screw-Black	STEEL	433954-01	1	1	1	1	1	1	1	1		

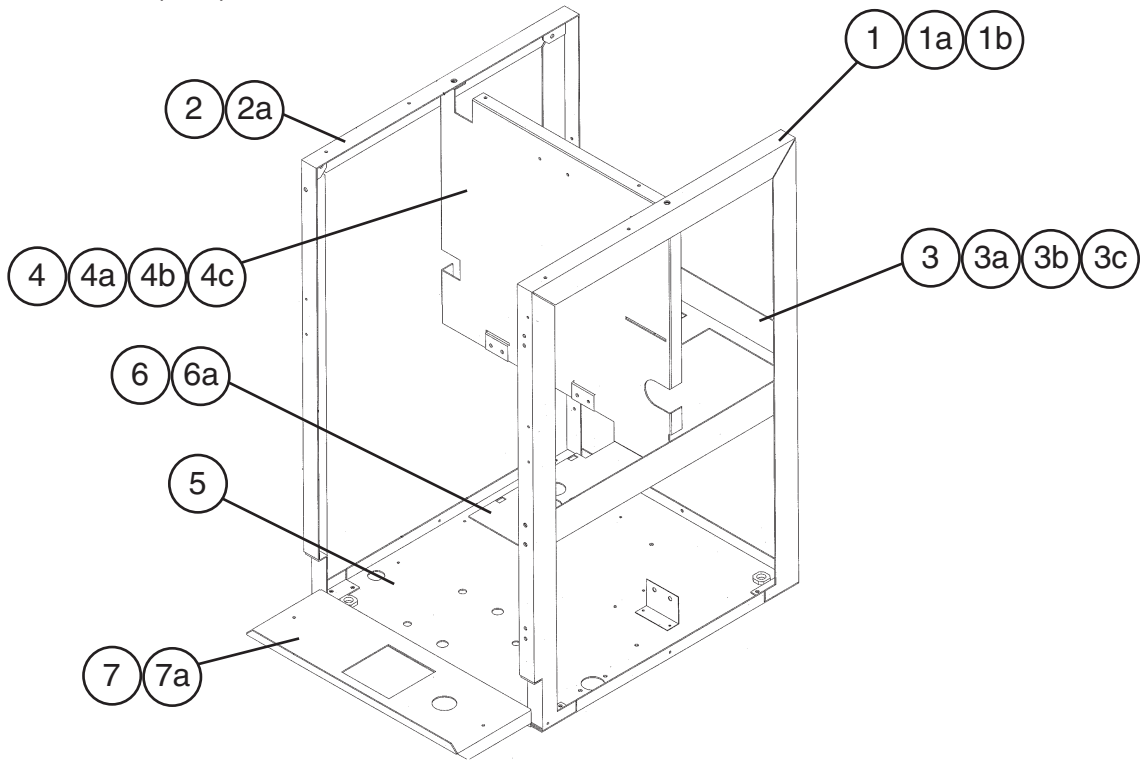
Title: **A. Ice Dispenser Assembly** Model: **DCM-270BAH**

Index No.	Description	Material or Model Number	Part Number	Required Number									
				L-0 to M-0	M-1 N-0	N-1 to P-2	Q-0 to S-0 (A-H)	S-0 (J & later)	T-1	T-2	T-3		
3	Power Supply Cord	-	4A1773-01	1	1	1	1	1	1	1	1	1	
3a	Truss Head Screw (GND)	4x8	7C31-0408	1	1	1	1	-					
	T2 Screw (GND)		7P31-0408					1	1	1	1		
4	Bushing	-	420472-02	1	1	1	1	1	1	1	1	1	
5	Bushing	-	420472-03	2	2	2	2	2	2	2	2	2	
6	Silicone Hose	L=350	7730-0912	1	1	1	1	1	1	1	1	1	
7	Spout Assembly (includes items 8 & 9)	-	105408A01	1	1	1	1	1	1	1	1	1	
7a	Thumbscrew	-	415949G08	1	1	1	1	1	1	1	1	1	
8	Spout (A)	-	105409-01	1	1	1	1	1	1	1	1	1	
9	Spout (B)	-	105410-01	1	1	1	1	1	1	1	1	1	
10	Right Panel	-	2A2017G01	1	1	1	1	-					
			2A4230-01					1	1	-			
			2A2918-01								1	1	
10a	Truss Head Screw	4x8, SS	7C32-0408	1	1	1	1	2	2	5	5		
10b	T2 Screw	4x8, SS	7P32-0408	2	2	2	2	-					
11	Left Panel	-	2A2020G01	1	1	1	1	-					
			2A4231-01					1	1	-			
			2A2919-01								1	1	
11a	Truss Head Screw	4x8, SS	7C32-0408	1	1	1	1	2	2	5	5		
11b	T2 Screw	4x8, SS	7P32-0408	2	2	2	2	-					
12	Top Support	-	2A2014-01	1	1	1	1	-					
			2A4232-01					1	1	-			
	Rear Panel		2A4716-01								1	1	
12a	Truss Head Screw	4x8	7C31-0408	6	6	6	6	-					
		4x8, SS	7C32-0408					4	4	-			
13	Top Panel	-	1A0176-01	1	1	1	1	1	1	-			
			2A2916-01								1	1	
13a	Truss Head Screw	4x8, SS	7C32-0408	2	2	2	2	2	2	-			
13b	Flat Plastic Washer	4	7W27-0400					2	2	-			
14	Front Barrier (L)	-	4A2376-01	1	1	1	1	1	1	-			
14a	Truss Head Screw	4x6, SS	7C32-0406	2	2	2	2	2	2	-			
15	Adjustable Leg	222-P-16B	4A2145-01	4	4	4	4	4	4	4	4	4	
16	Apron Panel	-	3A1813-01	1	1	1	1	-					
			3A4313-01					1	1	1	1		
16a	Truss Head Screw	4x6, SS	7C32-0406	4	4	4	4	4	4	4	4		
17	Air Filter (A)	-	208840G03	1	1	1	1	1	1	1	1	1	
18	Grille	-	102936-02	1	1	1	1	-					
			102936-04					1	1	1	1		
19	Plug Housing	3191-4P-201	412832-05								1	1	

B. Frame Assembly

DCM-270BAH

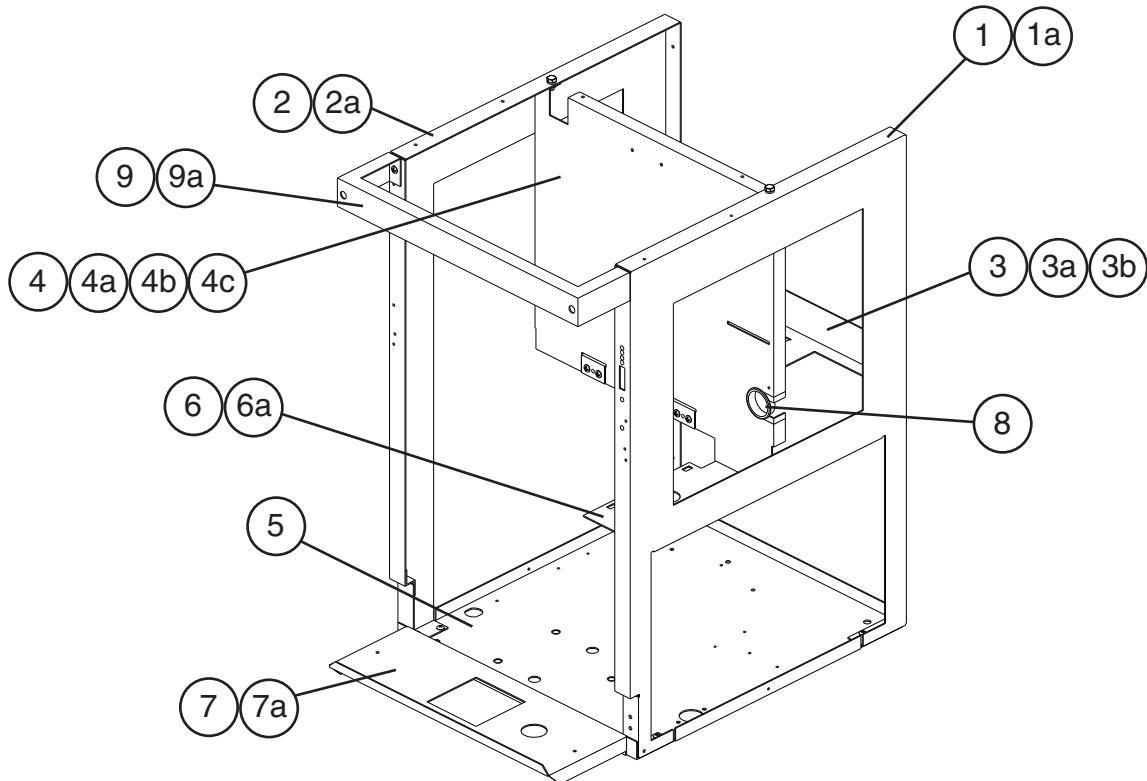
L-0 to S-0 (A-H)



B. Frame Assembly

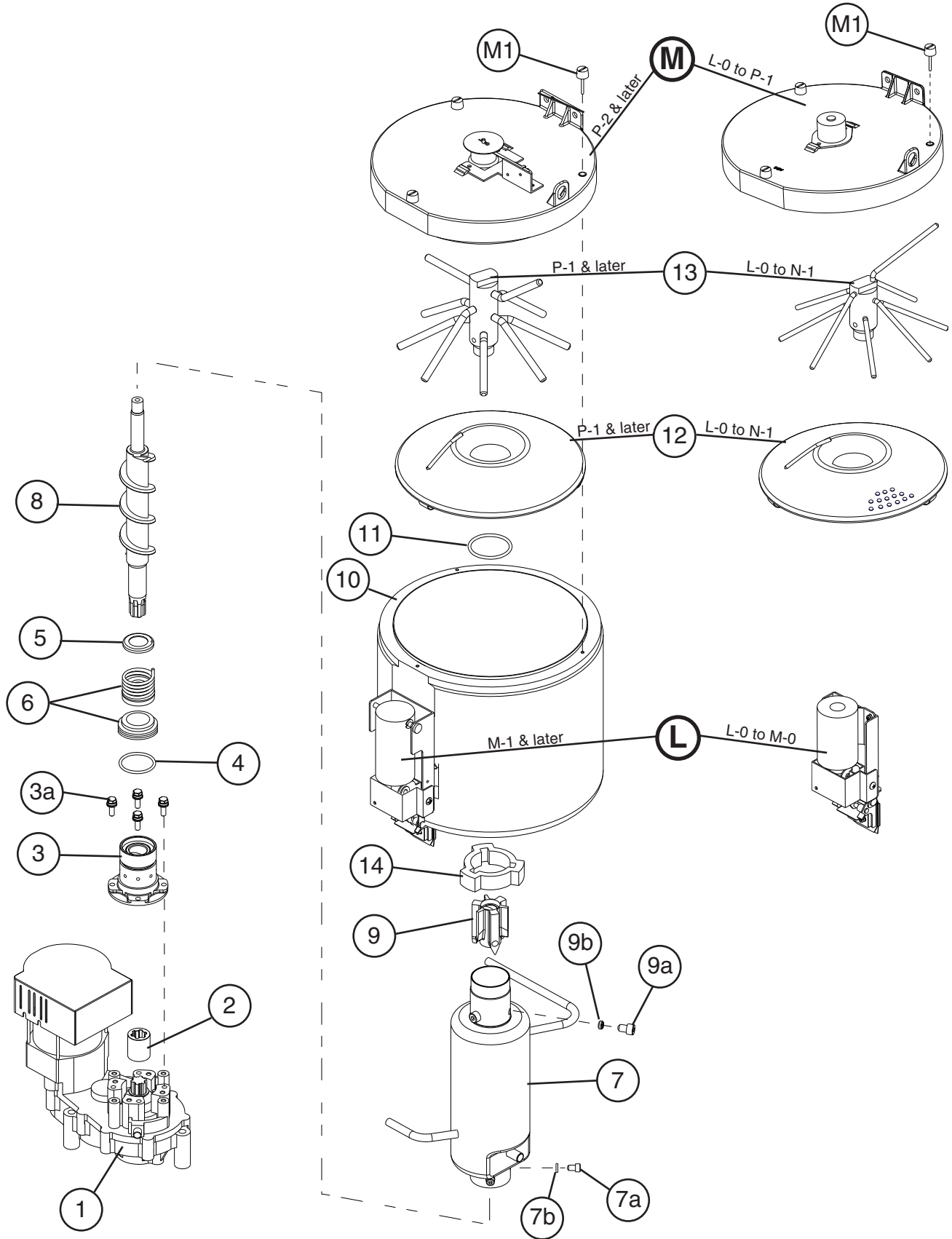
DCM-270BAH

S-0 (J & later) to T-3



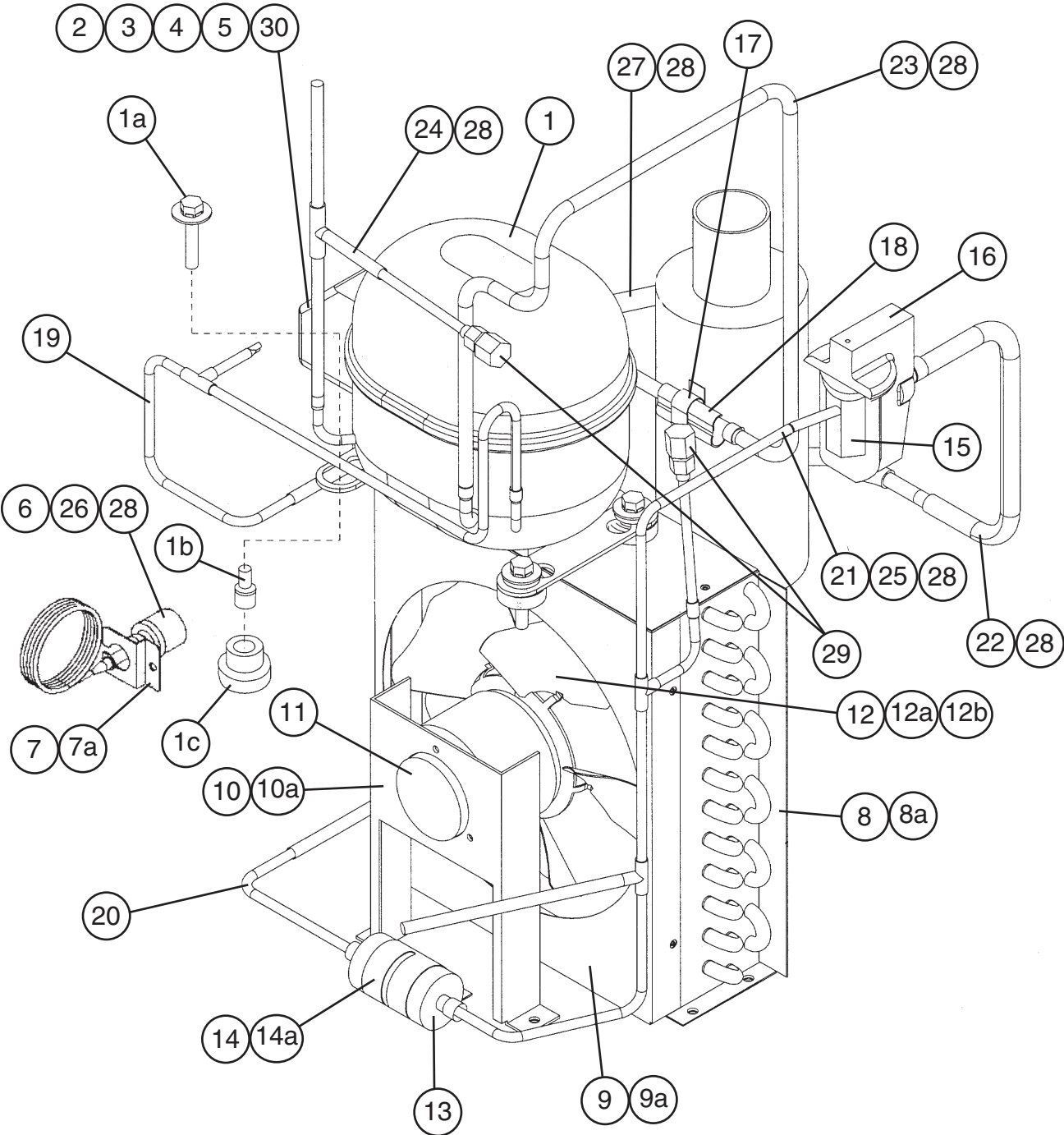
Title: B. Frame Assembly Model: DCM-270BAH												
Index No.	Description	Material or Model Number	Part Number	Required Number								
				L-0 L-1	M-0	M-1 to S-0 (A-H)	S-0 (J & later) T-1	T-2 T-3				
1	Right Support Assembly	-	2A2015G01	1	1	-						
			2A2566G01			1	-					
			2A4279G01				1	1				
1a	FT Screw	4x8, SS	7F32-0408	4	4	4	4	4				
1b	Truss Head Screw	4x8	7C31-0408			2	-					
2	Left Support Assembly	-	2A2018G01	1	1	1	-					
			2A4280G01				1	1				
2a	FT Screw	4x8, SS	7F32-0408	4	4	4	4	4				
3	Compressor Support	-	4A2339G01	1	1	1	-					
			4A4429G01				1	1				
3a	Truss Head Screw	4x8	7C31-0408	4	4	4	4	4				
3b	Lock Washer	5, SS	7L22-0500	4	4	4	-					
	Truss Head Screw	5x8, SS	7C32-0508				4	4				
3c	Nut	5, SS	7N12-0500	4	4	4	-					
4	Panel	-	2A2013G01	1	1	1	-					
	Panel (includes item 8)		2A4478G01				1	1				
4a	Truss Head Screw	4x8	7C31-0408	2	2	2	2	2				
4b	Hex Head Bolt	6x10, SS	7B02-0610	2	-							
		6x12, SS	7B02-0612		2	2	2	2				
4c	Lock Washer	6, SS	7L22-0600	2	2	2	2	2				
5	Base Assembly	-	3A1811G01	1	1	1	-					
			2A2923G01				1	1				
6	Reservoir Bracket	-	3A1812-01	1	1	-						
6a	Truss Head Screw	4x8	7C31-0408	4	4	-						
7	Drain Support	-	3A0710-01	1	1	1	1	1				
7a	FT Screw	4x8, SS	7F32-0408	3	3	3	3	3				
8	Bushing	SB-1500-21	420470-06				1	1				
9	Top Support	-	3A2903-01					1				
9a	Truss Head Screw	4x8	7C31-0408					2				

C. Icemaking Unit
DCM-270BAH
 L-0 to T-3

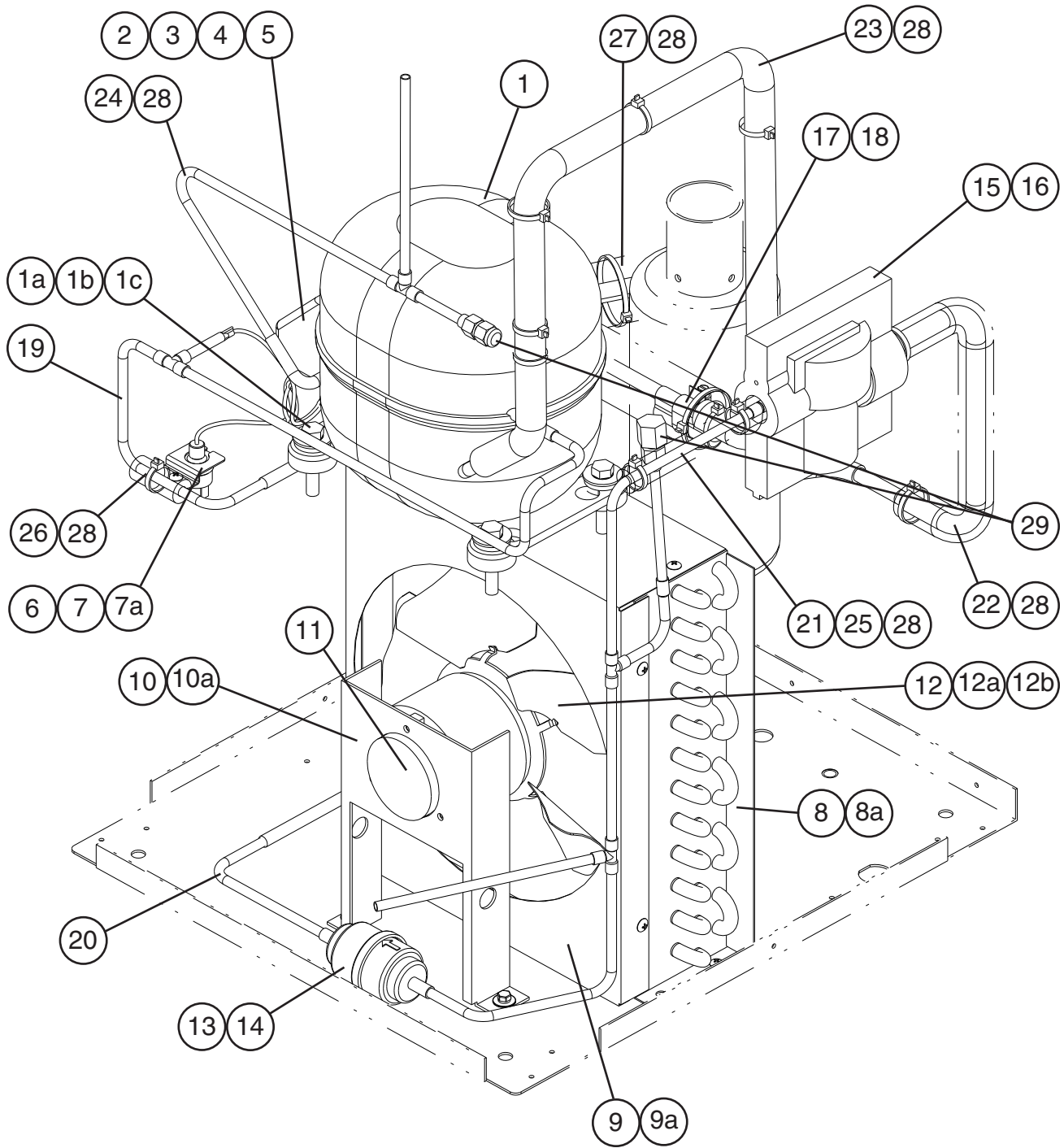


Title: C. Icemaking Unit Model: DCM-270BAH												
Index No.	Description	Material or Model Number	Part Number	Required Number								
				L-0 to M-0	M-1 N-0	N-1	P-1	P-2	Q-0 to T-3			
L	Shutter Assembly (for mounting hardware, see section "L", item 1a)	-	231620A02	1	-							
			237274A02		1	1	1	1	1			
M	Cover Assembly-Bin Top	-	228513A02	1	1	1	1	-				
			240921A01					1	1			
M1	Thumbscrew	-	430825G01	3	3	3	3	3	3			
1	Gear Motor	TC1185 1 Ø 120V 80W	2U0147-01	1	1	1	1	1	1			
2	Spline Coupling	-	418316-01	1	1	1	1	1	1			
3	Housing	-	206013G03	1	1	1	1	1	1			
3a	Bolt	6x20	458660-01	4	4	4	4	4	4			
4	"O" Ring	G40	7616-G040	1	1	1	1	1	1			
5	Ring (B)	-	432494-01	1	1	1	1	1	1			
6	Mechanical Seal	HK9A-MS Ø 22	432491-01	1	1	1	1	1	1			
7	Evaporator	-	332576G01	1	1	1	1	1	1			
7a	Socket Head Cap Screw	6x10, SS	7S12-0610	4	4	4	4	4	4			
7b	Split Lock Washer	6, SS	7L22-0600	4	4	4	4	4	4			
8	Auger	-	341449G01	1	1	1	1	-				
			361014G01					1	1			
9	Extruding Head-45C	-	327236G02	1	1	1	1	1	1			
9a	Socket Head Cap Screw	8x14, SS	429121-01	3	3	3	3	3	-			
			7S12-0814						3			
9b	Seal	M8	467858-01						3			
10	Storage Bin	-	228516G01	1	1	-						
			228516G07			1	1	1	1			
11	"O" Ring	P48	7616-P048	1	1	1	1	1	1			
12	Drip Ring (B)	-	207754-01	1	1	1	-					
			207754-03				1	1	1			
13	Agitator	-	348969G01	1	1	1	-					
			354209G02				1	1	1			
14	Cover-Upper Evaporator	-	413446-01	1	1	1	1	1	1			

D. Refrigeration Circuit
DCM-270BAH
 L-0 to T-2



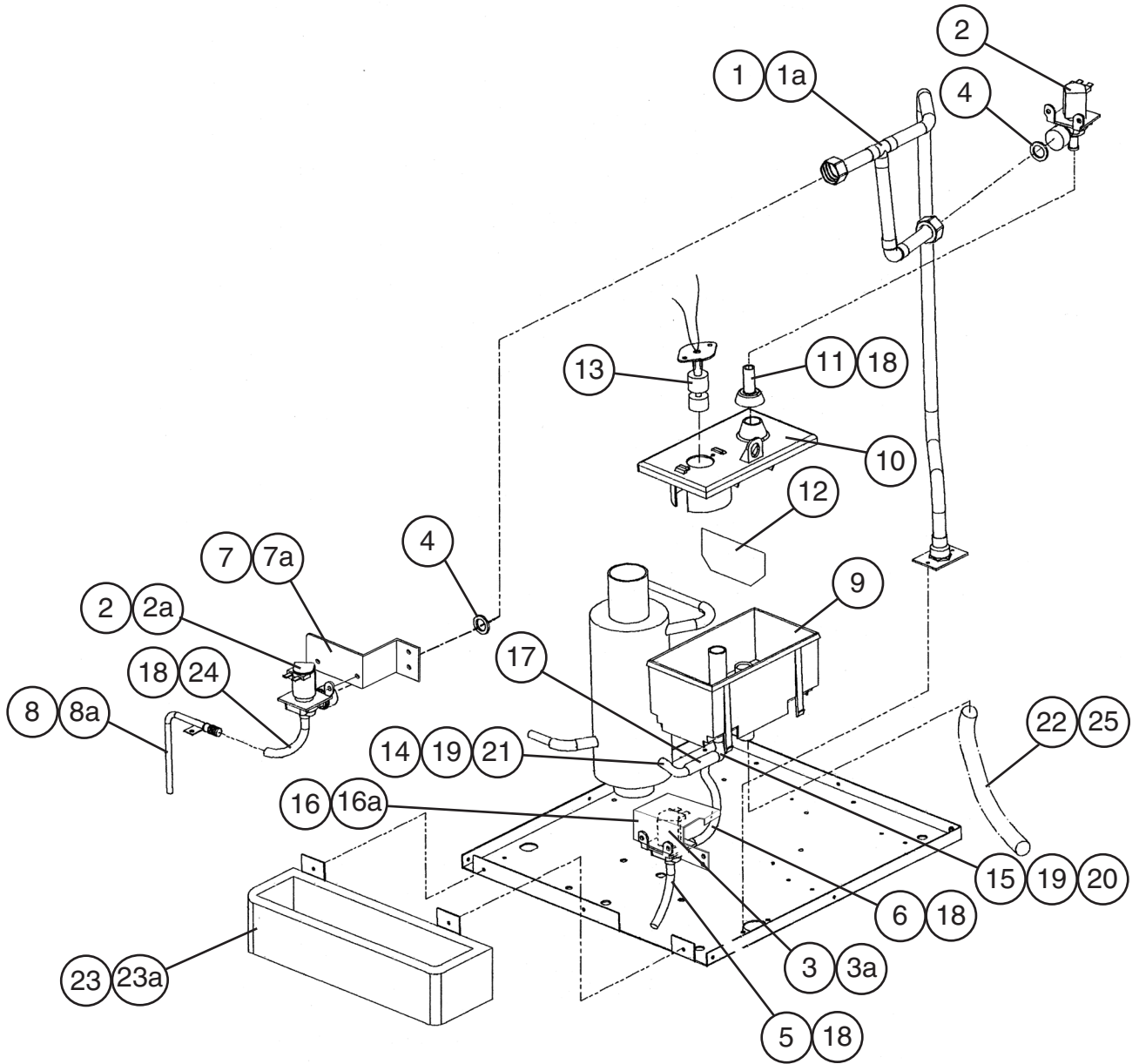
D. Refrigeration Circuit
DCM-270BAH
T-3



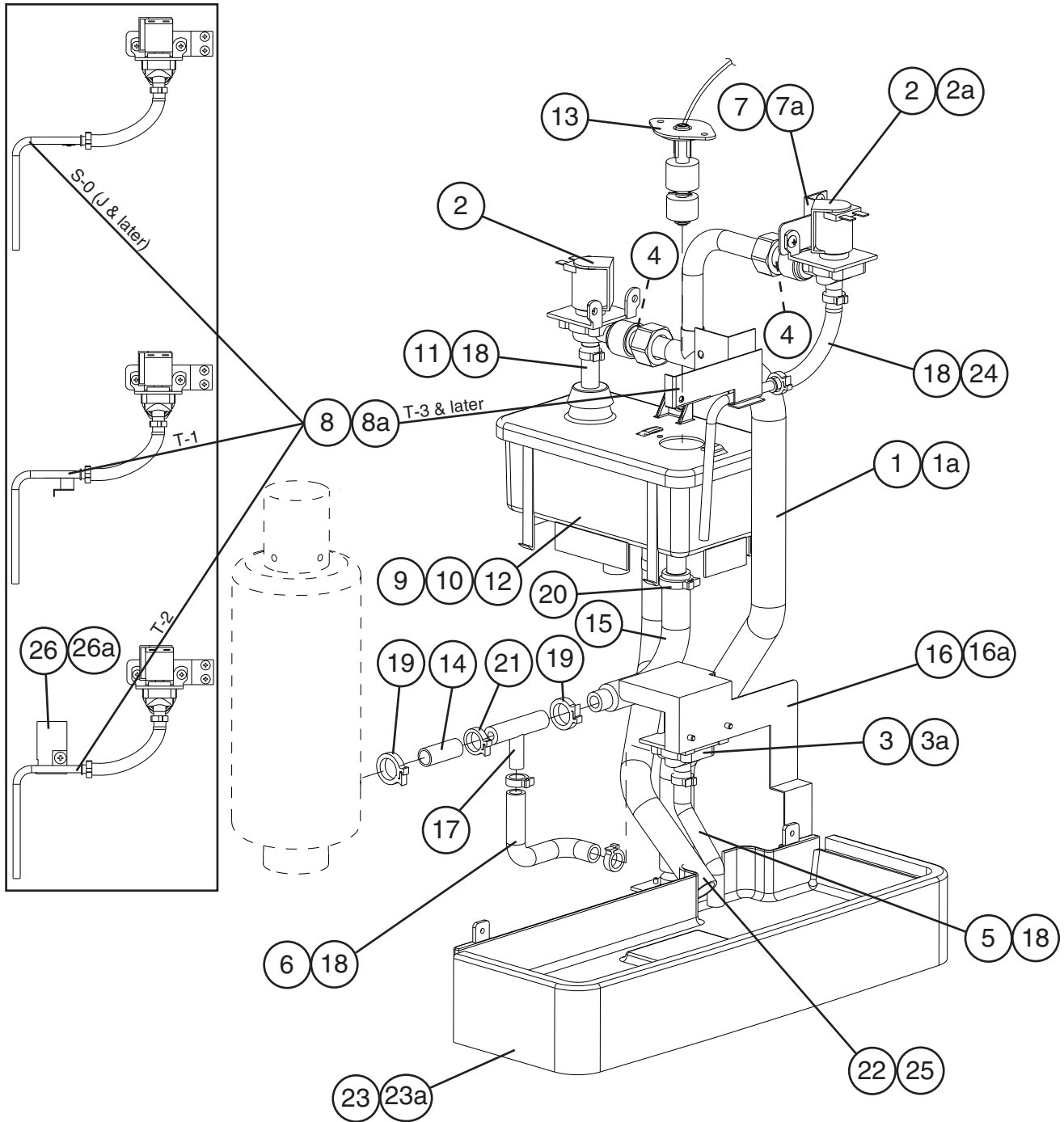
Title: D. Refrigeration Circuit Model: DCM-270BAH													
Index No.	Description	Material or Model Number	Part Number	Required Number									
				L-0 to T-2	T-3								
1	Compressor	-	4A2272-01	1	-								
			4A4614-01		1								
1a	Bolt	-	437889-01	4	4								
1b	Spacer	-	4A2282-01	4	4								
1c	Grommet	-	4A2281-01	4	4								
2	Terminal Cover	-	4A2272F01	1	-								
	Terminal Box		4A4614F01		1								
3	Protector Retainer	-	4A2272F02	1	-								
			4A4614F02		1								
4	Protector	-	4A2272F03	1	-								
			4A4614F03		1								
5	Starter	-	4A2294-01	1	-								
			4A4614F04		1								
6	Pressure Switch	400K270K	433441-05	1	1								
7	Pressure Switch Bracket	-	434938-01	1	1								
7a	T2 Screw	4x8	7P31-0408	1	1								
8	Condenser	-	2A0780-01	1	1								
8a	FT Screw	4x8, SS	7F32-0408	2	2								
9	Fan Shroud	-	3A0715-01	1	1								
9a	T2 Screw	4x8	7P31-0408	6	6								
10	Fan Motor Bracket	-	3A0716-01	1	1								
10a	Hex Head Bolt w/Washer	5x10, SS	7B0230510	2	2								
11	Fan Motor (mounting screws supplied with motor)	SP-B16EM1	4A0815-01	1	1								
12	Fan Blade	AD9CW38UBA	3A0608-01	1	1								
12a	Washer	-	435983-01	1	1								
12b	Hex Nut	-	4A1345-01	1	1								
13	Drier	THC-035	4A1113-01	1	1								
14	Drier Bracket	-	445847-01	1	-								
	Nylon Tie		8911-0301		1								
14a	T2 Screw	4x8, SS	7P32-0408	1	-								
15	Expansion Valve	AN-ISC	4A1117-01	1	1								
16	Expansion Valve Cover	-	4A1168-01	1	1								
17	Clamp	-	443461-02	1	1								
18	Holder Expansion Valve-3/8	-	3A0107-01	1	1								
19	Copper Tube (A)-High Side	-	3A1785G01	1	-								
			3A5044G01		1								
20	Copper Tube (B)-High Side	-	4A2323-01	1	1								
21	Copper Tube (C)-High Side (includes 1 of item 29)	-	3A1786G01	1	1								
22	Copper Tube (A)-Low Side	-	3A1787A01	1	1								
23	Copper Tube (B)-Low Side	-	3A1968A01	1	-								
			3A5043A01		1								
24	Process Tube Assembly (includes 1 of item 29)	-	3A1789G01	1	-								
			3A5045G01		1								
25	Insulation Tube	L=140	7762-0717	1	1								
26	Insulation Tube	L=40	7762-0717	1	1								
27	Insulation Tube	L=380	7762-2943	1	1								

Title: D. Refrigeration Circuit Model: DCM-270BAH												
Index No.	Description	Material or Model Number	Part Number	Required Number								
				L-0 to T-2	T-3							
28	Tie	-	7920-0003	13	-							
			8911-0150		13							
29	Access Valve	-	457729-01	2	2							
30	Screw (terminal)	-	4A0898-03	3	-							

E. Water Circuit
DCM-270BAH
L-0 to S-0 (A-H)



E. Water Circuit
DCM-270BAH
 S-0 (J & later) to T-3

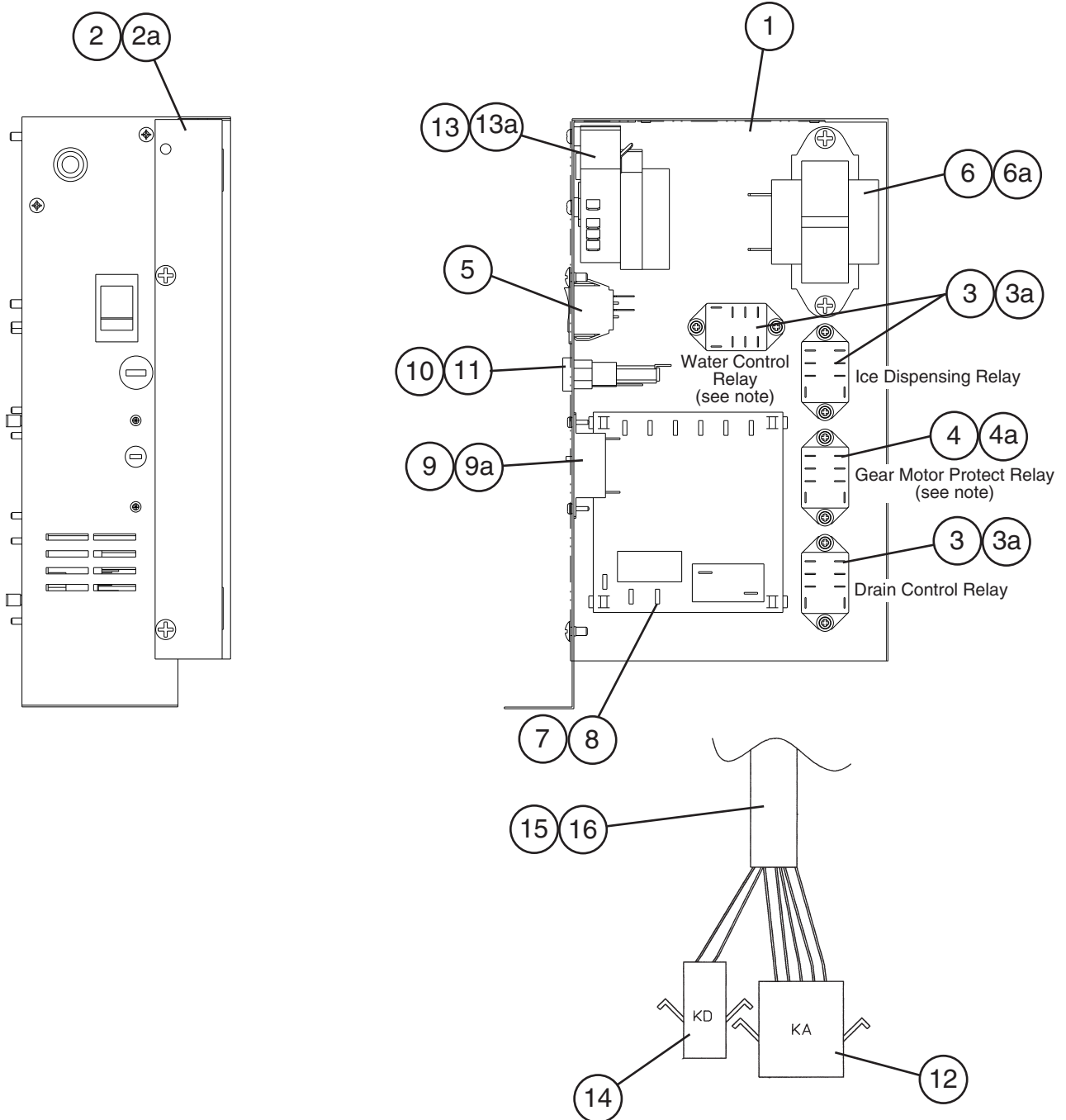


Title: **E. Water Circuit** Model: **DCM-270BAH**

Index No.	Description	Material or Model Number	Part Number	Required Number								
				L-0 L-1	M-0	M-1 to P-2	Q-0 to S-0 (A-H)	S-0 (J & later)	T-1	T-2	T-3	
1	Water Pipe	-	2A0787G01	1	1	1	1	-				
			2A4181G01					1	1	1	1	
1a	T2 Screw	4x8, SS	7P32-0408	2	2	2	2	2	2	2	2	
2	Water Valve (inlet & dispense)	S-30	4A0865-01	2	2	2	2	2	2	2	2	
2a	Truss Head Screw	4x8	7C31-0408	2	2	2	2	-				
	T2 Screw		7P31-0408					2	2	2	2	
3	Water Valve (drain)	-	4A2077-01	1	1	-						
			4A2772-01			1	1	1	1	1	1	
3a	Truss Head Screw	4x8	7C31-0408	2	2	2	2	2	2	2	2	
4	Washer	K-59963	4A0867-01	2	2	2	2	2	2	2	2	
5	Vinyl Hose	L=65	7716-0913	1	1	1	1	-				
		L=75						1	1	1	1	
6	Vinyl Hose	L=300	773013896	1	1	1	1	-				
		L=85						1	1	1	1	
7	Side Support Bracket	-	4A2315-01	1	1	1	-					
	Water Valve Bracket		4A4310-01					1	1	1	1	
7a	T2 Screw	4x8	7P31-0408	2	2	2	-	2	2	2	2	
8	Water Tube Assembly	-	4A1359G01	1	1	1	1	1	-			
			4A4424G01						1	-		
			3A4669G01							1	-	
			4A4618G01								1	
8a	T2 Screw	4x8, SS	7P32-0408	1	1	1	1	1	1	1	1	
9	Reservoir	-	2A0753-01	1	1	1	1	1	1	1	1	
10	Reservoir Cover	-	214810-01	1	1	1	1	1	1	1	1	
11	Reservoir Inlet	-	4A0869-01	1	1	1	1	1	1	1	1	
12	Separator-Reservoir	-	4A1255-01	1	1	1	1	1	1	1	1	
13	Float Switch	TW-1221-101	435490-01	1	1	1	1	1	1	1	1	
14	Silicone Hose	L=35	7730-1114	1	1	1	1	1	1	1	1	
15	Reservoir Hose	-	4A1165-03	1	1	1	1	1	1	1	1	
16	Drain (flush) Valve Holder	-	3A1861-01	1	1	1	1	-				
			3A2904-01					1	1	1	1	
16a	T2 Screw	4x8	7P31-0408	1	1	1	1	-				
								2	2	2	2	
17	Tee	N8TUB6	4A1140-01	1	1	1	1	1	1	1	1	
18	Hose Clamp	2314 HC 468	4A2017-04	6	6	6	6	6	6	6	6	
19	Hose Clamp	2326 HC 672	4A2017-05	2	2	2	2	2	2	2	2	
20	Hose Clamp	2330 HC 750	4A2017-06	1	1	1	1	1	1	1	1	
21	Hose Clamp	2322 HC 593	4A2017-07	1	1	1	1	1	1	1	1	
22	Vinyl Hose	L=280	7725-1923	1	1	1	1	1	1	1	1	
23	Drain Pan	-	318857G02	1	-							
			318857G04		1	1	1	1	1	1	1	1
23a	Truss Head Screw	4x16, SS	7C32-0416	2	2	2	2	2	2	2	2	
24	Vinyl Hose	L=170	7725-0912	1	1	1	1	-				
		L=135						1	-			
		L=117							1	1	1	
25	Cable Tie	-	7920-0003	1	1	1	1	-				
			8911-0150					1	1	1	1	

Title: E. Water Circuit Model: DCM-270BAH												
Index No.	Description	Material or Model Number	Part Number	Required Number								
				L-0 L-1	M-0	M-1 to P-2	Q-0 to S-0 (A-H)	S-0 (J & later)	T-1	T-2	T-3	
26	Water Tube Bracket	-	4A4416-01								1	-
26a	Truss Head Screw	4x8, SS	7C32-0408								1	-

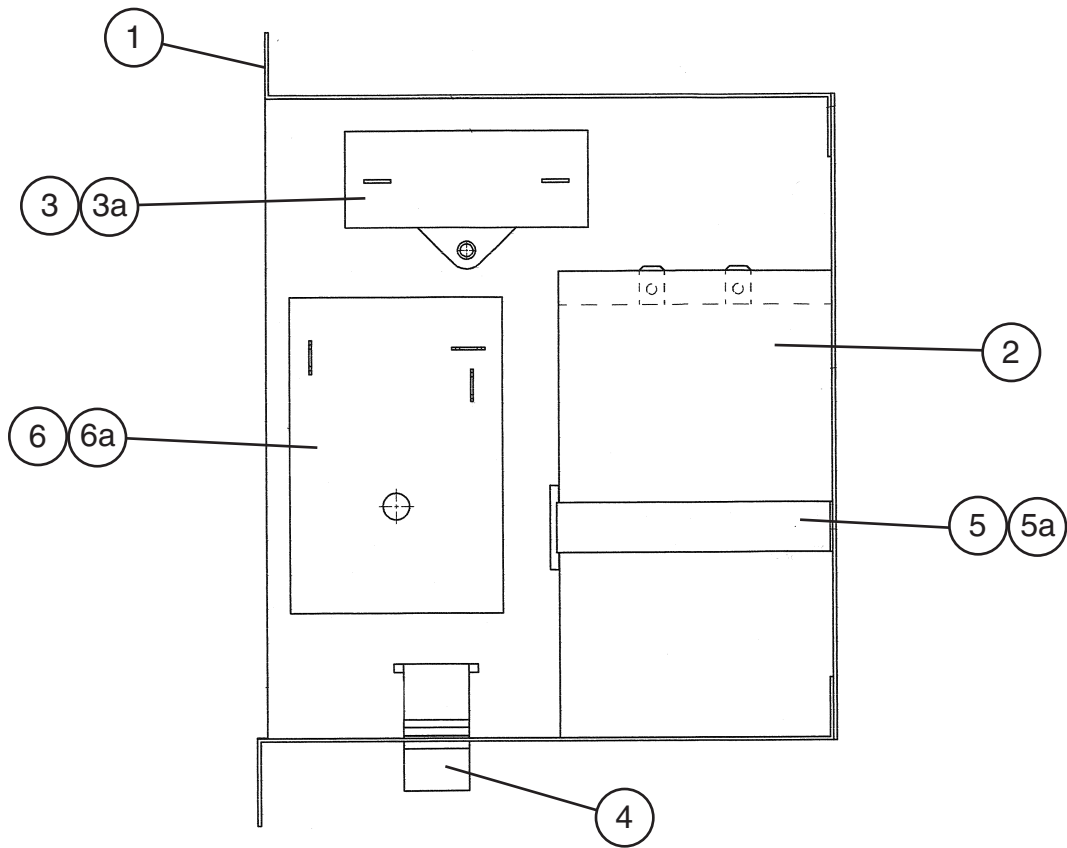
F. Control Box (A) Assembly
DCM-270BAH
 L-0 to T-3



Note: The water control relay and gear motor protect relay are shown in their current positions. The positions were initially reversed and moved to the current positions in 2001. If necessary, confirm your icemaker's layout using the wiring diagram on your unit.

Title: F. Control Box (A) Assembly Model: DCM-270BAH											
index no.	Description	Material or Model Number	Part Number	Required Number							
				L-0 to S-0 (A-H)	S-0 to T-3 (J & later)						
1	Control Box (A)	-	2A1994-01	1	-						
			2A4090-01		1						
2	Control Box Cover	-	3A0714-01	1	1						
2a	Truss Head Screw	4x8	7C31-0408	2	2						
3	Relay	LY2F 24V	406132-03	3	3						
3a	Tapping Screw	3x8	431415-01	6	6						
4	Relay-Gear Motor Protect	LY1F 120V	418271-03	1	1						
4a	Tapping Screw	3x8	431415-01	2	2						
5	Rocker Switch	-	421491-08	1	1						
6	Transformer	BE141625GEK	4A0557-01	1	1						
6a	Truss Head Screw	4x8	7C31-0408	2	2						
7	Control Board	H2AA144C02	437305-02	1	1						
8	Board Support	-	4A0336-03	4	4						
9	Protector	NW-3P-2 1.6A	427253-01	1	1						
9a	Pan Head Screw	3x8, SS	7C12-0308	2	2						
10	Fuse Holder	HTB921 250V 15A	4A0892-01	1	1						
11	Fuse	AGC-1 250V 1A	4A0893-01	1	1						
12	Plug Housing	3191-15P	412832-01	1	1						
13	Timer (drain)	366-428 24V	4A2157-01	1	1						
13a	Screw	#6-32x3/8	4A0898-01	2	2						
14	Plug Housing	3191-04P	412832-07	1	1						
15	PVC Tubing	L=150	8104-0006	1	1						
16	Tie	-	7920-0002	1	1						

G. Control Box (B) Assembly
DCM-270BAH
 L-0 to T-3

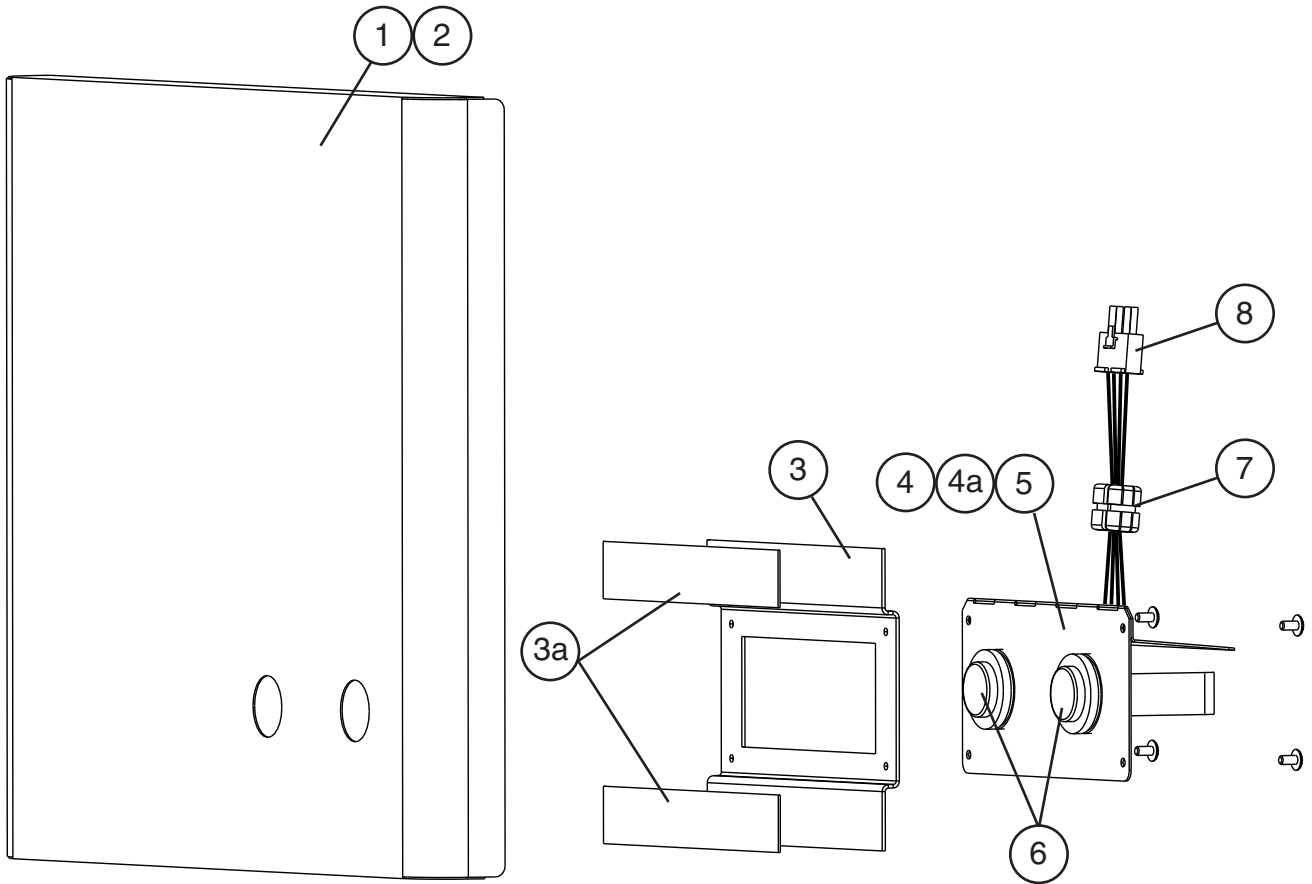


Title: G. Control Box (B) Assembly Model: DCM-270BAH				Required Number								
Index No.	Description	Material or Model Number	Part Number	L-0 to N-0	N-1 to R-0	S-0 to T-3						
				1	Control Box (B)	-	2A2033-01	1	1	1		
2	Start Capacitor	145-174MFD, 250VAC	3A0076-11	1	1	1						
3	Capacitor	10MFD, 280VAC	416921-05	1	1	1						
3a	T2 Screw	4x8	7P31-0408	1	1	1						
4	Plug Housing	3191-06P	412832-03	1	1	1						
5	Strap	-	434580-01	1	-							
			4A2262-01			1	1					
5a	T2 Screw	4x8	7P31-0408	1	1	1						
6	Agitation Timer	-	4A1137-01	1	1	-						
			4A4097-01				1					
6a	Truss Head Screw	4x20, SS	7C32-0420	1	1	-						
		4x25, SS	7C32-0425			1						

H. Front Panel Assembly

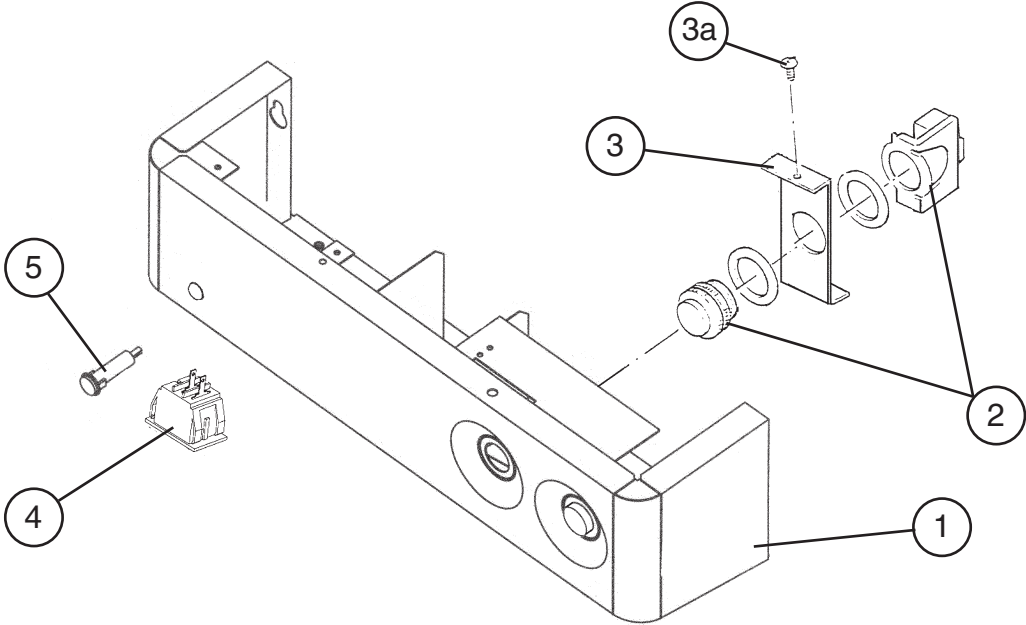
DCM-270BAH

T-2, T-3

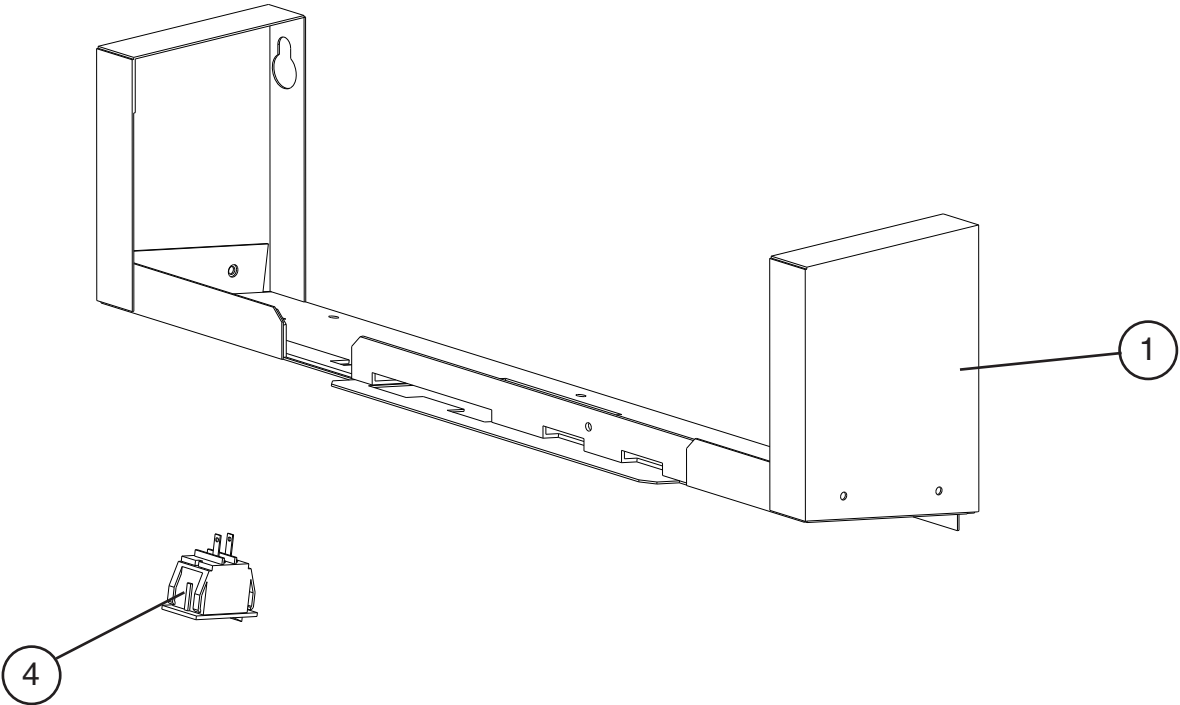


Title: H. Front Panel Assembly Model: DCM-270BAH													
Index No.	Description	Material or Model Number	Part Number	Required Number									
				T-2	T-3								
1	Front Panel Assembly (B) (includes items 2, 3, and 3a)	-	3A5001G01	1									
2	Front Panel (A)	-	2A4714-01	1									
3	Switch Bracket (A)	-	3A4548-01	1									
3a	Foam Tape	L=170	4A2460L01	2									
4	Push Switch Assembly (includes items 5 through 7)	-	3A5003A01	1									
4a	Truss Head Screw	4x8, SS	7C32-0408	4									
5	Switch Bracket (B)	-	4A4585-01	1									
6	Push Switch	-	435745-02	2									
7	Bushing	-	420472-05	1									
8	Receptacle Housing	-	412831-05	1									

J. Middle Front Panel/Frame Assembly
DCM-270BAH
L-0 to T-1

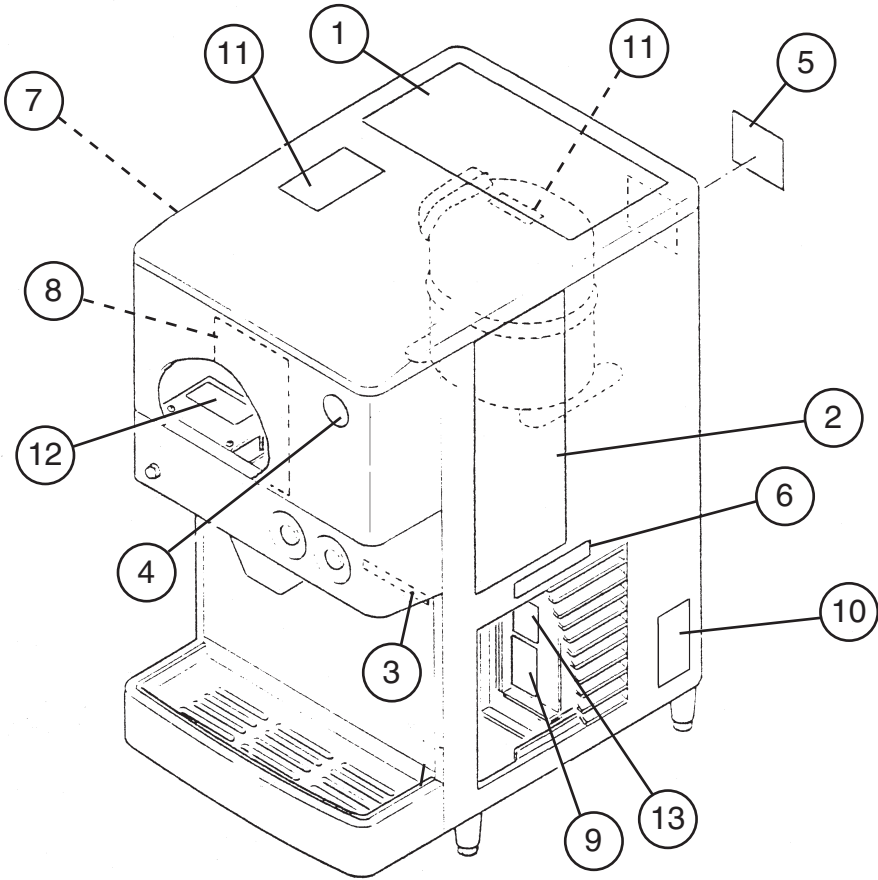


J. Middle Front Panel/Frame Assembly
DCM-270BAH
T-2, T-3

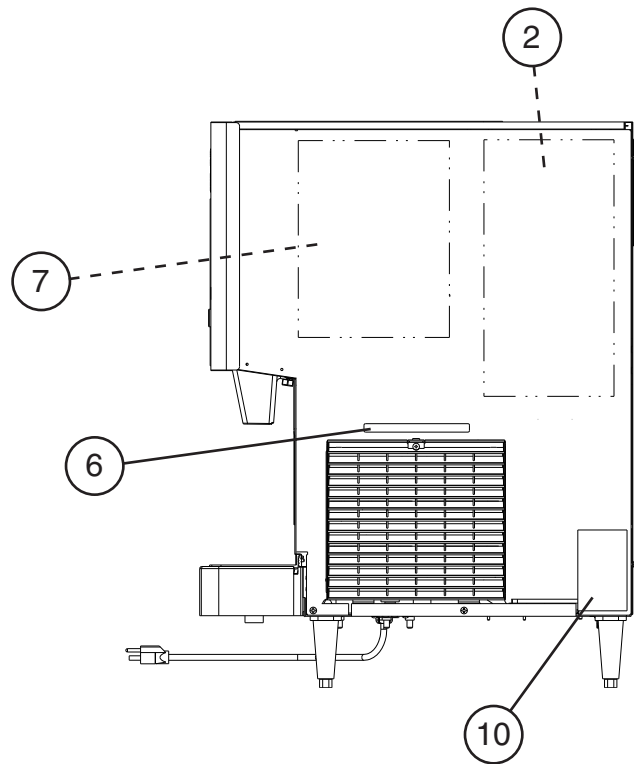
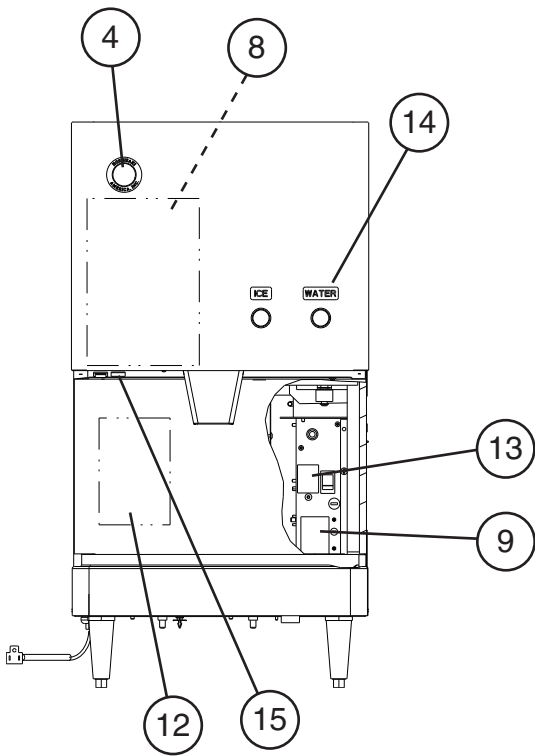
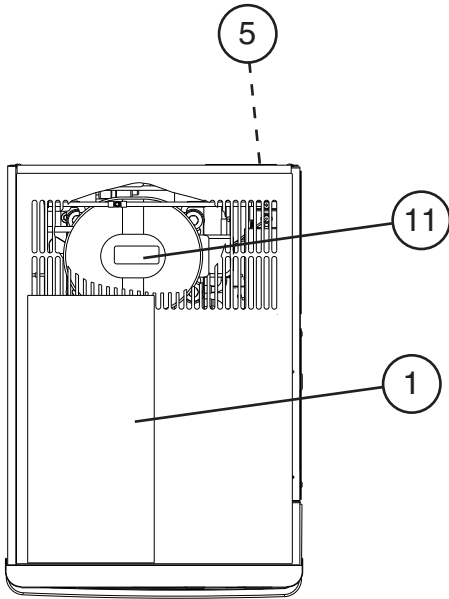


Title: J. Middle Front Panel/Frame Assembly Model: DCM-270BAH											
Index No.	Description	Material or Model Number	Part Number	Required Number							
				L-0 L-1	M-0 to T-1	T-2 T-3					
1	Middle Front Panel-Painted	-	3A1719G01	1	1	-					
	Middle Front Frame	-	2A4263G02			1					
2	Push Switch	2AP-1B	435745-02	2	2	-					
3	Switch Bracket	-	4A1207-01	2	2	-					
3a	Truss Head Screw	4x8, SS	7C32-0408	6	6	-					
4	Rocker Switch	HLS112A	421490-01	1	1	1					
5	Lamp	Blue Lens	4A2346-01	1	-						
		Red Lens	4A2672-01		1	-					

K. Label Location
DCM-270BAH
L-0 to T-1



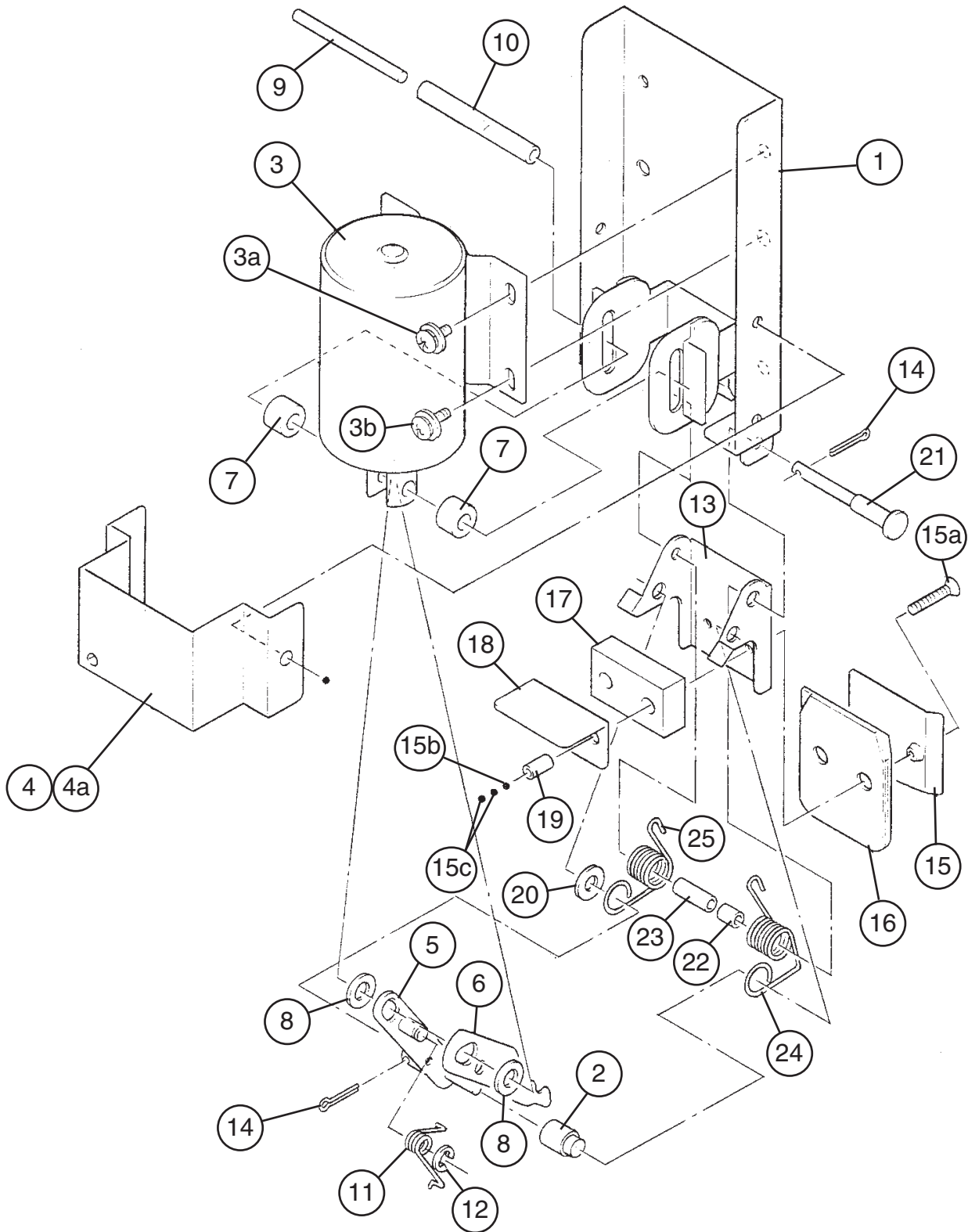
K. Label Location
DCM-270BAH
T-2, T-3



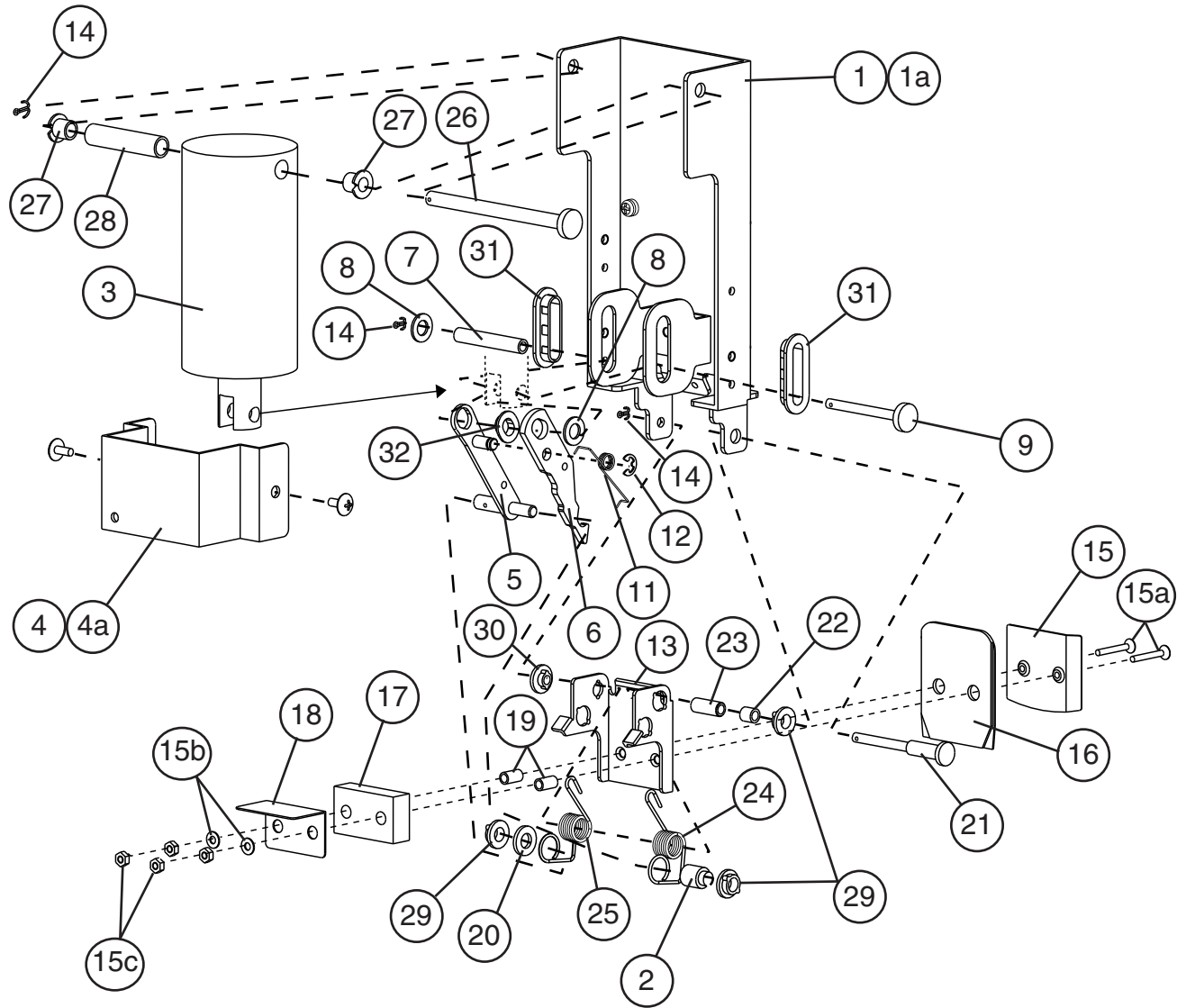
Title: **K. Label Location** Model: **DCM-270BAH**

Index No.	Description	Material or Model Number	Part Number	Required Number									
				L-0 to M-0	M-1 to T-1	T-2 T-3							
1	Instruction Sheet	-	2A1999-01	1	1	-							
			2A2952-01			1							
2	Instruction Label	-	2A2000-01	1	1	1							
3	Model Number Label	-	4A1321-30	1	-								
4	Label-Penguin	-	456246-02	1	1	-							
			456246-01			1							
5	Nameplate	-	4A2318-01	1	-								
			4A2913-01		1	1							
6	Label-Air Filter	-	426177-01	1	1	1							
7	Label-Cleaning	-	2A2001-01	1	1	1							
8	Wiring Label	-	3A1797-01	1	1	-							
			3A4818-01			1							
9	Label/Reset	-	4A1319-01	1	1	1							
10	Caution Label (L)	-	441560-01	1	1	1							
11	Label-R404A	-	4A0960-01	1	1	1							
12	Rating Label	-	4A2319-01	1	-								
			4A2914-01		1	1							
13	Label / Flush	-	4A2317-01	1	1	1							
14	Ice-Water Label	-	4A2954-01			1							
15	Label-Power	-	4A3234-01			1							

L. Shutter Assembly
DCM-270BAH
L-0 to M-0



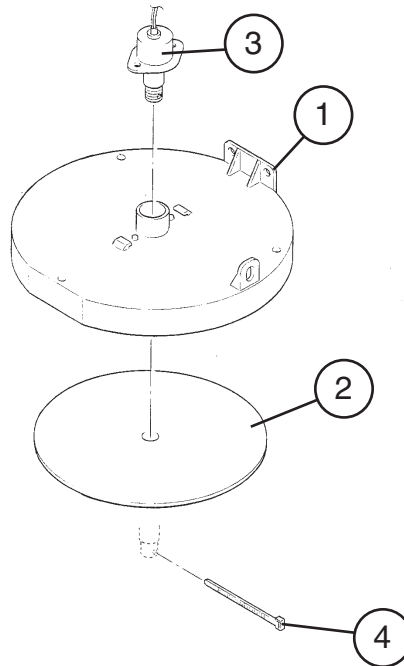
L. Shutter Assembly
DCM-270BAH
M-1 to T-3



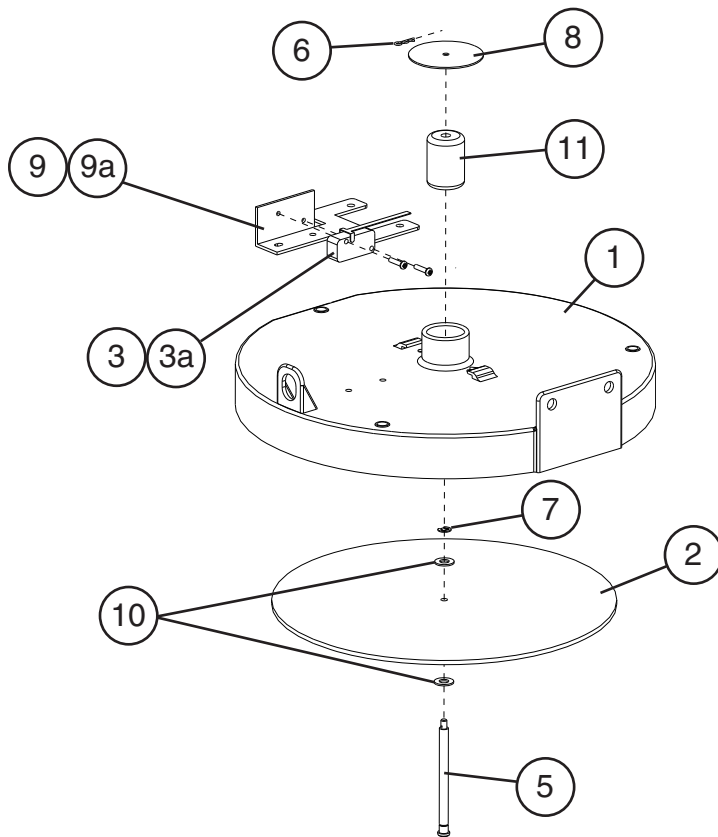
Title: **L. Shutter Assembly** Model: **DCM-270BAH**

Index No.	Description	Material or Model Number	Part Number	Required Number											
				L-0 to M-0	M-1 to R-0	S-0 to T-3									
1	Bracket-Solenoid	-	341414G02	1	-										
			351479G01		1	1									
1a	Screw	4x12, SS	434838-02		4	4									
2	Shaft (B2)	-	432520-02	1	1	1									
3	Solenoid	-	459672-01	1	-										
			462560-01		1	1									
3a	Screw	4x8, SS	434838-01	2	-										
3b	Screw	4x12, SS	434838-02	4	-										
4	Cover	-	457272-01	1	1	1									
4a	Truss Head Screw	4x8, SS	7C32-0408	2	2	2									
5	Shaft	-	441645G01	1	-										
			462262G01		1	1									
6	Hook-Shutter	-	438406-02	1	1	1									
7	Collar (B)	ABS (GRAY)	432524-02	2	-										
	Tube	-	451284-06		1	1									
8	Spacer	-	454943-01	2	2	2									
9	Shaft (D)	-	452491-02	1	-										
	Shaft-Plunger	-	462258-01		1	1									
10	Tube	-	451284-04	1	-										
11	Spring	-	411532-01	1	1	1									
12	"E" Ring	4, SS	721S-0004	1	1	1									
13	Stopper	-	451280-01	1	-										
			351480-01		1	1									
14	Split Pin	1.6x12, SS	711SP1612	2	3	3									
15	Plate (A1)-Shutter	-	414756-01	1	1	1									
15a	Flat Head Screw	3x20, SS	441581-01	2	2	2									
15b	Plain Washer	3, SS	7W22-0300	2	2	2									
15c	Nut	3, SS	7N12-0300	4	4	4									
16	Plate (B)-Shutter	-	423948-01	1	1	1									
17	Plate (C)-Shutter	-	419150-01	1	1	1									
18	Plate (D)-Shutter	-	419151-01	1	1	1									
19	Collar (C)-Shutter	-	411539-03	2	2	2									
20	Plain Washer	6, SS	7W22-0600	1	1	1									
21	Shaft (B)	-	454941-01	1	-										
			462561-01		1	1									
22	Tube	-	451284-05	1	1	1									
23	Collar	-	454942-01	1	1	1									
24	Spring (R)	-	452502-01	1	1	1									
25	Spring (L)	-	452503-01	1	1	1									
26	Shaft-Solenoid	-	462257-01		1	1									
27	Bush	-	462558-01		2	-									
			462558-02			2									
28	Collar-Solenoid	-	462559-01		1	1									
29	Spacer (A)	-	461230-01		3	3									
30	Spacer (B)	-	461231-01		1	1									
31	Spacer (C)	-	461232-01		2	2									
32	Spacer (D)	-	461233-01		1	1									

M. Cover Assembly - Bin Top
DCM-270BAH
L-0 to P-1



M. Cover Assembly - Bin Top
DCM-270BAH
P-2 to T-3



Title: M. Cover Assembly - Bin Top Model: DCM-270BAH											
Index No.	Description	Material or Model Number	Part Number	Required Number							
				L-0 to P-1	P-2 to T-3						
1	Cover-Bin Top	-	341039G01	1	-						
			341039G02		1						
2	Balance Plate	-	454488-01	1	-						
			417473-02		1						
3	Bin Control Switch	-	459673-01	1	-						
	Microswitch		461294-01		1						
3a	Pan Head Screw	3x16, SS	7C12-0316		2						
4	Cable Tie	-	7920-0002	1	-						
5	Shaft	-	465781-01		1						
6	Snap Pin	SS	715S-0004		1						
7	E-Ring	5, SS	721S-0005		1						
8	Balance Plate	-	465782-01		1						
9	Bracket-Switch	-	465783-01		1						
9a	Push Rivet	-	411399-08		2						
10	Plain Washer	13x6.5x1, SS	7W22-0613		2						
11	Sleeve	-	465784-01		1						

N. Accessories & Packaging
DCM-270BAH
 L-0 to T-3

Title: N. Accessories & Packaging Model: DCM-270BAH											
Index No.	Description	Material or Model Number	Part Number	L-0 to T-3	Required Number						
1	Instruction Manual	PAPER	91A23B10A	1							
2	Fuse	-	4A0893-01	1							
	Packaging	-	1A0576A01	1							